



NETWORK
INTERNATIONAL SCHOOL
Kindle the fire, brighten your future

WHOLE SCHOOL SENCO

CANDIDATE INFORMATION PACK



CAMBRIDGE
International Examinations

Cambridge International School

Contents

Letter from the Principal & School Director	3
Information about Network International School	5
Vacancy Advert	6
Job Description	8
Person Specification	9
Application Process	11
School Facts and Statistics	12
Vision Statement	13
Teachers Staffing Structure 2017 & 2022	14 &15
Support Staffing Structure 2017	16
Helpful Information about Myanmar	17



Letter from the Principal & School Director

Dear Candidate

Welcome to Network International School, which caters for over 700 students between the ages of 2 and 16 years and will expand to over 900 students by 2022, and will include the opening of a new Sixth Form in 2018. In August 2016 our first Year 11 cohort achieved 90% 5+ A*-C and 56% A*/A grades in their Cambridge IGCSE's. Where prior data was available our Year 11 & Year 6 students' progress was equivalent to Outstanding Schools progress in the UK.

Thank you for your interest in the post of Primary Class Teacher at Network International School. I am delighted to have this opportunity to give you some details about Network and to describe the kind of candidate I hope to appoint.

Network is one of the leading British International Schools in Yangon, Myanmar. We were the first British International School established in Yangon, providing a high quality education since 1996 based on the UK National Curriculum & Cambridge IGCSE's.

Network comprises a dedicated team of highly qualified international teachers from Britain and other English speaking countries and skilled Myanmar teachers. Every class has an externally trained international teacher, an experienced Myanmar Associate Teacher and in the Primary School at Network one Teaching Assistant. This allows for a high ratio of teachers to students, ensuring each student receives the support they need.

The vision for this school is to provide an outstanding education for students from across the globe. Our International community is represented by students from over fifty different countries and our aim is that every student leaves the school as a highly qualified young adult, well prepared for the next stage of their education and with a wealth of experience in the wider world. We aim to achieve this by ensuring everyone associated with the school commits to achieving outstanding progress, enjoys and engages in their learning whilst being prepared to take on challenge without the fear of failure. An extensive range of extra-curricular activities such as trips, clubs and a range of sporting opportunities support our academic curriculum.

Outstanding academic achievement is very important for future success, as is the need to develop an affinity with lifelong learning. Students at Network International School make outstanding progress delivered through our student centred education and a positive climate for learning that permeates every phase of Network International School. The curriculum provides high-quality inspirational learning, which enables students to become independent learners; develops their unique personal talents, ensures that they are self-confident and inquisitive and prepares them to be active and responsible global citizens.

The school sets the highest expectations for all students and by working together in a triangular partnership of teachers, students and parents we enable our students to lead enriched, happy and fulfilled lives, making a contribution to Network International School, Myanmar and the global community.

We opened our new Primary school building in August 2016 and includes up-to-date teaching and learning facilities including projectors and screens in each of the 20 classrooms; a swimming pool; changing rooms; sports courts; new toilet facilities; landscaping and a larger hall for Physical Education, performances, concerts and assemblies. There will also be a new one-way traffic system to improve the student drop off and pick up routines.

The post will suit an outstanding teacher who is interested in developing their career in an international setting. The candidate needs to be passionate about primary teaching and have a desire to make a difference to international children's lives. The successful candidate will be an inspirational role model and share in our commitment to the education of the whole child.

We are looking for someone who is starting out in his or her career or who already has an outstanding record in the classroom to join us. We can offer the right candidate a hugely exciting and unique opportunity to be involved in an international school.

Please visit our website at www.networkinternationalschool.com for further information about Network International School.

I look forward to hearing from you.

Yours sincerely

A handwritten signature in black ink, appearing to read 'Carl Dent', enclosed within a simple, hand-drawn oval border.

Carl Dent

Principal - Network International School

Information about Network International School

Early Years Foundation Stage

The Early Years Foundation Stage (EYFS) has its own curriculum which emphasizes learning based on play and experiences. It is a broad, balanced and purposeful curriculum delivered through planned and child initiated play activities to help ensure all children have the opportunity to reach their full potential and experience the best possible start to their education within an enabling environment and to encourage every child to be healthy, stay safe, enjoy and achieve and make a positive contribution.

Network Primary School

The Primary curriculum follows on from the Foundation and Nursery learning, building on previous knowledge in preparation for the next year and for the higher Key Stages. A range of teaching styles are used, with the students working in small groups, in pairs, as a whole class or as mixed classes. In the early years (Key Stage 1) there is more emphasis on songs, games and first-hand experience, with an aim throughout to develop independent thinkers who can predict outcomes, explore new ideas and use existing knowledge to learn from new experiences.

Network Secondary School

Network Secondary School was launched in 2011 and has expanded year by year and now comprises years 7 to 11. Students in Years 7-9 follow the revised UK National Curriculum (2014) and we are a Cambridge accredited school for iGCSE in Key Stage 4.

Sixth Form

Our Sixth Form offering Cambridge Advanced Level Qualifications will open in August 2018.



Job Title: **Whole School SENCO**
Salary: Competitive Salary offered based on skills and experience
Contracts: Permanent and renewed annually
Hours: Full Time
Start Date: September 2017

We are seeking to appoint a creative and inspirational SENCO.

The successful candidate will:

- A qualified SEND teacher
- Passionate about developing the whole child
- Unrelenting in their belief of the potential of children
- Up to date with curriculum developments
- A native English speaker

About the school:

- All through 2-16 international school in Yangon, Myanmar
- Network is one of the leading British International Schools in Yangon
- Network comprises a dedicated team of highly qualified International teachers
- Network is a small school setting with three classes in each year group
- The vision of Network School is to provide an excellent education for young people so they may become independent, active and responsible members of society

We offer:

- Competitive salaries based on experience and skills
- One return air fare per year
- Monthly Rental Allowance
- Health Insurance
- An international community
- A Continuing Professional Development Programme
- 100% school fees remission for dependent children
- Visa run allowance in terms 1, 2 & 3

The post will suit an outstanding teacher who is interested in developing their career in an international setting. The candidate needs to be passionate about their subject and have a desire to make a difference to international children's lives. The successful candidate will be an inspirational role model and share in our commitment to the education of the whole child.

For an application pack please email Tracey Westwood at careers@networkintlschool.com or visit the school website. To discuss this post please contact the Principal, Mr Carl Dent at Principal@networkintlschool.com

Please send your CV with a supporting statement, addressing the Person Specification to

careers@networkintlschool.com.

Successful candidates at the application stage will be contacted for a Skype Interview at a mutually convenient time.

Network International School is committed to safeguarding and promoting the welfare of children and young people and expects all staff to share this commitment.



Job Description – Whole School SENCO

About the Role

Job Title	Whole School SENCO
Salary	Competitive salary offered based on skills and experience
Hours of Work	Permanent, Full Time
Accountable to	Principal

Job Purpose

- To support the Principal in all aspects of the leadership and management of the school.
- To ensure high quality SEND provision to effectively support teaching and learning and student progress.
- Securing student achievement through the effective delivery of SEND Continuing Professional Development for all teachers.
- To fulfil the Network School teacher job description by providing PPA in the Primary School where appropriate..

Areas of Accountability

- Responsibility for providing SEND leadership which brings about high standards of teaching and learning
- Devise strategies to raise achievement for all SEND students.
- Responsibility for leading and managing staff in all aspects of SEND and effective and safe deployment of staff and resources

Specific Duties and Responsibilities

Leadership

- Support the vision, ethos and policies of the school and promote high levels of achievement through Inclusion.
- Ensure that parents of SEN students are well informed about the school curriculum, its targets, students attainment and their part in the process of improvement.
- Oversee Careers Guidance for SEN students and ensure that they access an appropriate pathway into higher education or employment
- Co-ordinating the development and implementation of the SEND policy
- Monitoring the impact of teaching and learning activities on the progress made by pupils with SEN
- Providing strategies to support pupils with SEN to meet the school's expectations of behaviour for learning
- Supporting the development of classrooms which support and foster achievement for all pupils
- Overseeing transition for all pupils joining the school, both at the start of the year and during the year
- Providing strategic direction for SEND provision throughout the school
- Supporting the identification and dissemination of the most effective teaching approaches for pupils with SEN
- Monitoring the quality of SEN support and guiding future improvements
- Working in close partnership with families, including liaising with parents and carers about, for example, student progress and concerns
- To effectively use regular analysis of data to track and monitor SEND student progress and to evaluate this through the use of appropriate assessments
- To ensure SEND has relevant reporting procedures in place
- To effectively manage and deploy relevant resources
- To support the vision, ethos and values of Network International School

Teaching and Learning

- To utilise the school's monitoring and review procedures to ensure individuals perform in line with our commitment to securing at least 'Good' standards of teaching and learning and seeking 'Outstanding'
- To monitor the quality of SEND teaching and students' learning through observation of teaching and work scrutiny according to the quality assurance framework.
- Delivery of the UK National Curriculum.

Students

- To contribute to the implementation of student tracking procedures
- To act as a Learning Guide for SEN students and parents
- To manage behaviour within SEND in accordance with the school's Behaviour Policy, ensuring that rewards and sanctions are used consistently as described within the policy
- To promote and safeguard the welfare of students

Professional Standards

- To participate in the school's CPD programme and Performance Management process

- To take responsibility for keeping up to date with SEND knowledge and to maintain personal professional development
- To ensure that all deadlines are met as published

Job Description – Key Stage 1 & 2 Teacher at Network International School

About the Role	
Job Title	Key Stage 1 or 2 Teacher
Salary	Competitive salary offered based on skills and experience
Hours of Work	Permanent, Full Time
Accountable to	Principal of Network School
Job Purpose	
Key Stage 1 or 2 Classroom teachers at Network School are responsible for fostering an enjoyment of learning and creating a teaching environment that stimulates students to grow and develop skills appropriate to each year group. Teachers are required to develop schemes of work and lesson plans in line with the English National Curriculum objectives but modified to cater for an International Setting.	
Areas of Accountability	
<ol style="list-style-type: none"> 1. To support the Principal and play an integral role in promoting all aspects of the school ethos, inspiring and motivating students and being an active member of the school community. 2. To act as a champion for all aspects of learning and a positive role model for all students. 3. To provide support for the vision for the school in order to maintain its success and ensure the highest quality of education for all its students. 4. To be responsible for realising high quality learning for their class and all other interactions with students. 	
Specific Duties and Responsibilities	
Teaching & Learning <ul style="list-style-type: none"> • Delivery of the UK national curriculum. • To set high expectations for achievement and to ensure all students attain the highest possible standards. • Planning, preparing and delivery of lessons that cater for the needs of the different ability ranges within a class. • Maintain up to date subject knowledge on curriculum developments. • Recording baseline data and the progression of the students throughout the school year. • Marking work and giving constructive and guided feedback to students both written and verbally. • Effectively use a range of different learning resources and equipment. • Use online tools to support the delivery of teaching to students. • Undertaking pastoral duties, such as taking on the role of form tutor, and supporting pupils on an individual basis through academic or personal difficulties. • Communicating effectively with parents throughout the year – parents’ conferences, report writing etc. • To construct, revise and develop schemes of work and to include a variety of resources and teaching and learning methods to allow all students to achieve success. • To set high expectations for pupil behaviour and take responsibility for managing it in the classroom and on school premises. 	
Additional Duties <ul style="list-style-type: none"> • All Network teachers must organise and participate in extra-curricular activities such as after school clubs, class trips and sporting or social events. • To be responsible for promoting and safeguarding the welfare of children and young people. All employees will have a responsibility for the children and young people that they will come into contact with. • You may be required to carry out additional duties, as the Principal or School Director may reasonably request from time to time. • To participate in the school’s CPD programme and Performance Management process. 	

Person Specification – Primary Teacher at Network International School

Area	Essential	Desirable	Method of Assessment
Qualifications	<ul style="list-style-type: none"> • Relevant Degree • PGCE, QTS 	<ul style="list-style-type: none"> • Evidence of further study / research 	Application Certificates
Professional Development	<ul style="list-style-type: none"> • Evidence of relevant continuing professional development 	<ul style="list-style-type: none"> • Ability to identify own professional development needs 	Application
Experience	<ul style="list-style-type: none"> • An outstanding classroom practitioner who is able to inspire students with an enthusiasm for learning. • Supporting students of all abilities to excellent progress. • Ability to establish and maintain high standards with a track record of achievement. • Planning of lessons/schemes of work. • Involvement in enrichment activities. • Evidence of effective positive behaviour management. 		Application Interview References
Knowledge and Skills	<ul style="list-style-type: none"> • Be a native English Speaker • Excellent subject knowledge • Ability to use AFL strategies to raise attainment • Ability to reflect constructively on the effectiveness of a lesson • Strong interpersonal, communication and ICT skills • In depth knowledge of English National Curriculum • Knowledge of best pedagogic practice and strategies to improve teaching and learning • Effective time management and organisational skills • Encourage and foster a teaching environment, which is built on mutual respect, inspiration and motivation • Work collaboratively and creatively with colleagues and have a good sense of humor. 	<ul style="list-style-type: none"> • Leadership and supervisory skills 	Application Interview Reference
Personal	<ul style="list-style-type: none"> • Emotional intelligence 	<ul style="list-style-type: none"> • Ambition to develop as a 	Application Interview

Qualities	<ul style="list-style-type: none"> • High standards and expectations of self and others • Capability to understand, empathise and engage well with young people • Commitment to equal opportunity and the wellbeing and success of every individual • Positive and flexible approach to opportunities and challenges • Ability to work on own initiative and be pro-active • Ability to self-evaluate and respond positively to constructive criticism • Passion, integrity and resilience • Contribute to the wider life of the school through taking part in and developing the enrichment programme • Strong intellect, energy and an innovative and positive approach to opportunities and challenges • The capacity to inspire confidence in parents and students and to work collaboratively with colleagues • A sense of humour 	teacher and in career	Reference
------------------	---	-----------------------	-----------

Application Process

Network School is committed to the protection and safety of its students and to promoting their welfare. To that end identity, security and medical checks will be required from the successful applicant. The school is also an employer committed to equal opportunities and welcomes applications regardless of age, gender or ethnicity.

Your written application

We hope that after reading the information pack you will want to apply for the post advertised.

If you wish to proceed, please provide your CV together with a supporting statement, addressing the Person Specification.

Applications should be emailed to careers@networkintlschool.com.

If you would like to visit the school please contact Tracey Westwood at tracey.westwood@networkintlschool.com



School Facts & Figures

Type of School	International School
Owned by	Network International
Age Range	2-16
Location	Yangon, Myanmar
Denomination	Secular
Co-Educational or Single Sex	Co-educational
Number on Roll	700
Class Size	Maximum 22



Vision Statement



NETWORK INTERNATIONAL SCHOOL

Kindle the fire, brighten your future

Vision Statement

The vision of Network International School is to provide an excellent education for young people so they may become independent, active and responsible members of society.

Our Mission is to;

- Provide a nurturing, stimulating child-centred learning environment that supports students to acquire not only key learning skills, but also life skills involving healthy relationships, caring about others and a sense of responsibility for the world we live in.
- Encourage students to become enthusiastic, independent, confident and inquisitive learners in a caring and nurturing environment.
- Encourage critical and creative thinking giving students the ability to develop lifelong learning skills.
- Develop each child's special gifts, which should be nurtured, valued and incorporated into lessons to benefit others, leading to a community of learners.
- Encourage students to explore and discover for themselves through an extensive range of learning opportunities.

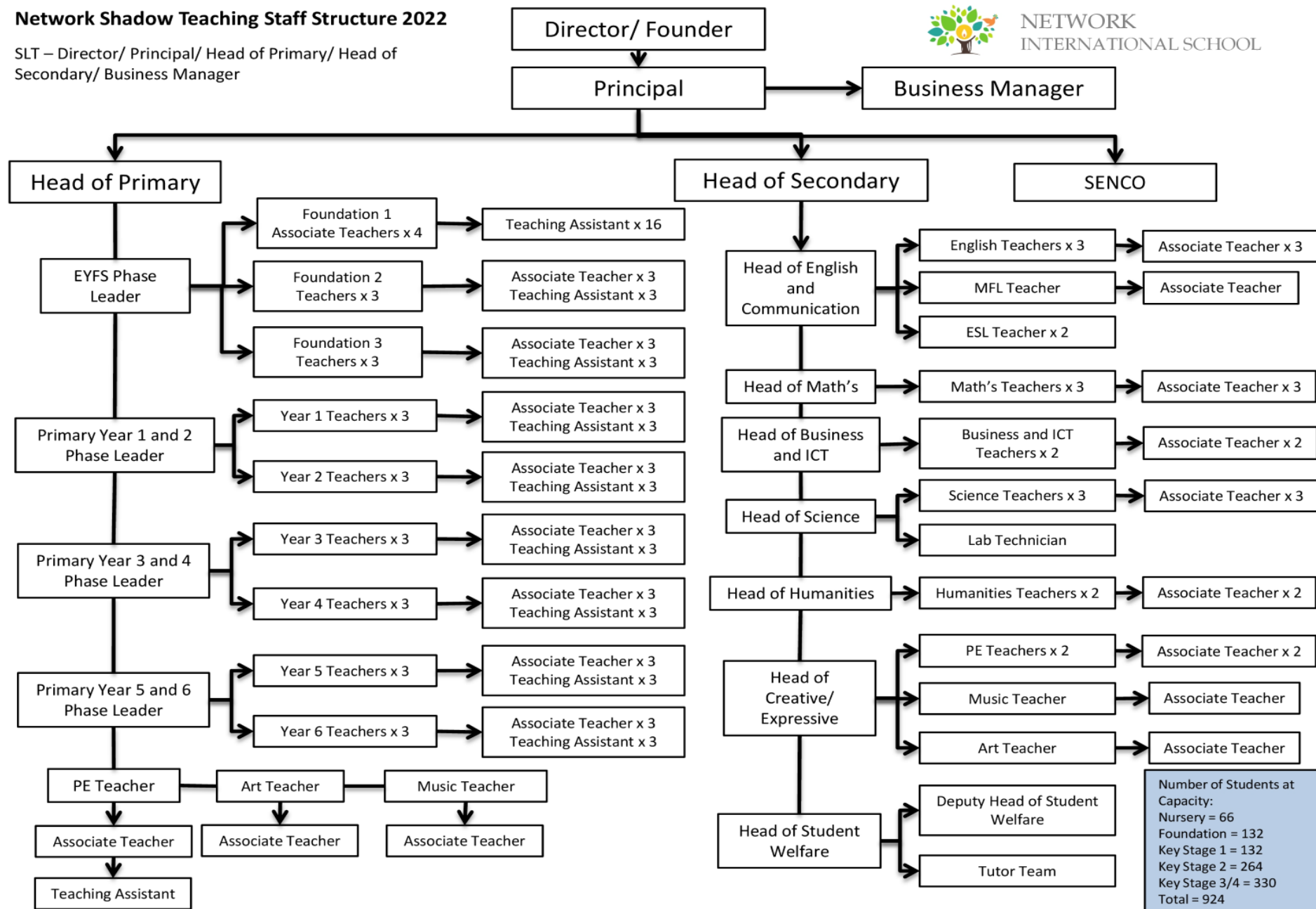
Teachers Staffing Structure 2022

Network Shadow Teaching Staff Structure 2022

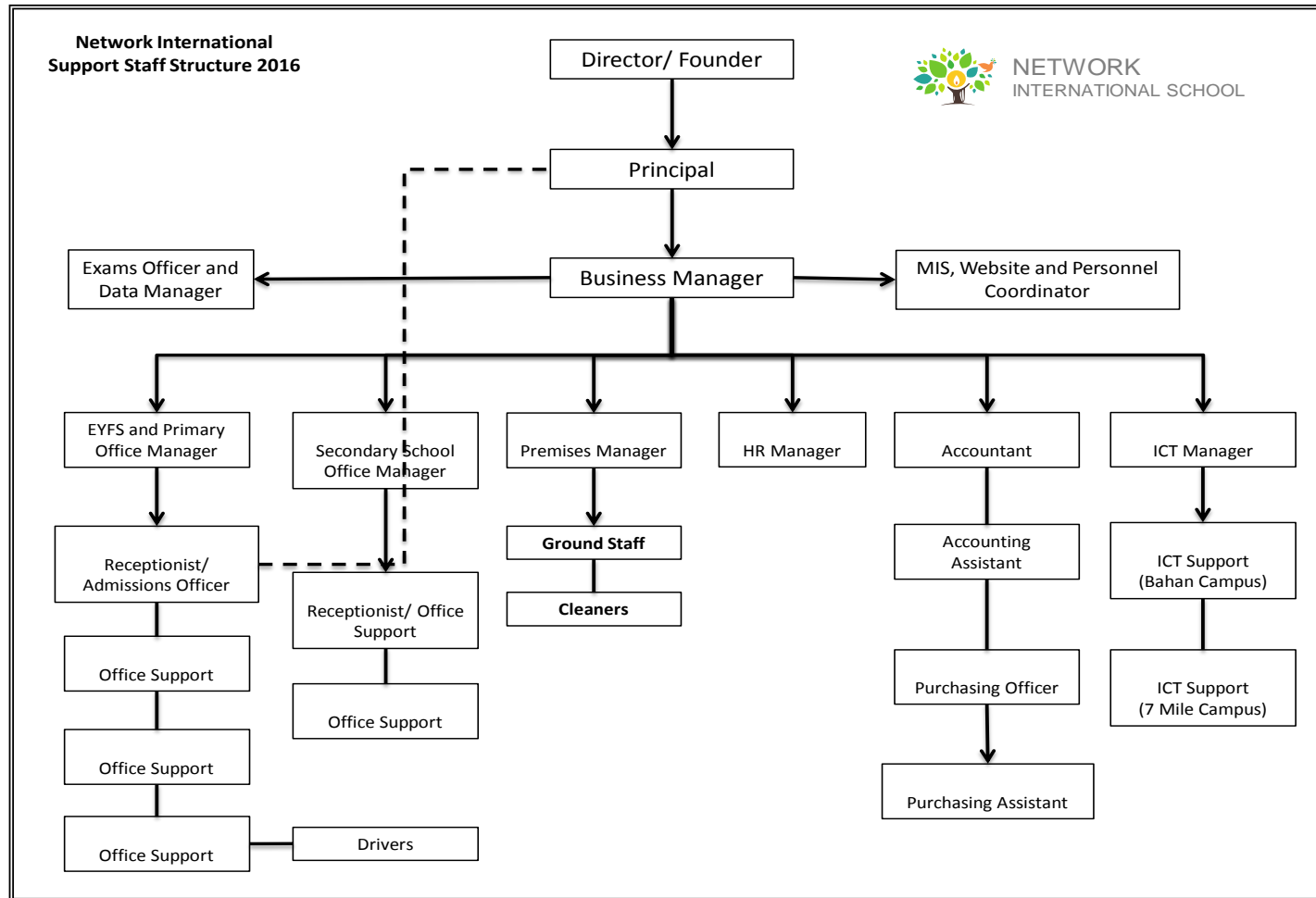
SLT – Director/ Principal/ Head of Primary/ Head of Secondary/ Business Manager



NETWORK
INTERNATIONAL SCHOOL



Staff Structure 2017



Helpful Information about Myanmar

Potential candidates are encouraged to research Myanmar in addition to the information given below:

General Information on Yangon

Information on Yangon can be found on many Google search engines to get details about the country, climate, vaccinations, weather, clothing, shopping, getting around, living and accommodation costs.

Visa

You require a Business Visa when you arrive in Myanmar. The School will be able to give you information and obtain Visa documentation should you be offered a position at Network International School.

The Myanmar government have recently updated the types of visas you can get and more information on this can be found on the link below:

<http://www.mip.gov.mm/portfolio/types-of-visa-fees-and-duration/>

Currency

Cash is the main form of money you will use in Myanmar unless you are paying online. You can now withdraw money from an ATM using MasterCard and Visa and you can receive money with Western Union Bank. The currency is Myanmar Kyat (MMK) and as the exchange rate with US \$ is fluctuating, at the present time it is advisable for applicants to check on XE Exchange website or similar exchange sites. You can exchange money in most places you go in Yangon and the rates vary. They are **very** fussy about the condition of the US notes and you get a better rate for \$100 bills; they must be clean and crease free.

Remember to let your banks/credit or debit card providers know that you will be here if you want to still use your card here (e.g. flights, hotel bookings etc), otherwise they may see the transactions as fraudulent. International teachers are paid by cash in US dollars.

Accommodation

Teachers will need to make and pay for their own hotel arrangements when they initially arrive. We recommend they use www.agoda.com or airbnb but if they require any assistance then the school is happy to help. The school will help you find an alternative that suits you once you are here. Rent is requested from the majority of landlords for twelve months with payment upfront. The school is happy to cover the initial cost with monthly payments being taken from an employee's salary.

Some apartments for foreigners are fully furnished or partly furnished, but many also require you to purchase at least some furniture.

On Arrival

On arrival new teachers will receive the following:

- Telephone SIM Card + 3,000 Kyats on the telephone card
- Golden Guide to Yangon Book
- 50,000 Kyats Cash

- A set of bed linen

Transport

The best possible method of transport is probably a taxi. They are everywhere you go and the prices are extremely reasonable with most journeys in town around 1500- 3000 MMK. The majority of the drivers speak very basic English so you should easily be able to get from A to B and you can negotiate your fare.

Weather

There are three seasons – wet season, cold season and hot season, each lasting approximately 4 months. At no point does it ever really get cold here unless you are travelling up north.

Internet Access

Wi-Fi is available at most places in Yangon. The majority of restaurants, cafes, bars and shopping malls have free access – you just need to ask the staff for the password. If you're staying at a hotel then they usually supply you with free Wi-Fi. The internet is not as fast here unfortunately but it is getting better and it's good enough to Facetime or Skype family and friends. The schools are all equipped with Wi-Fi if you need to access the internet for teaching resources. If you are renting, it is possible to have Wi-Fi installed if you wish. It is relatively expensive for the installation but then the monthly costs aren't too bad. Alternatively, use a SIM card to use the internet. Further information can be obtained once new recruits join the school.



EYFS & Primary: 23 Inya Myaing Road, Bahan Township, Yangon | Phone: 519306/534212/513057 | admin@networkintlschool.com

Secondary: 29 Highland Avenue, Pyay Road, Mayangone Township, Yangon | Phone: 660565 | secondary@networkintlschool.com