



INFORMATION PACK



Rugby  
School  
THAILAND



# CONTENTS

- 1 HEAD OF PREP AND FOUNDING HEAD MASTER
- 3 HEAD OF SENIOR SCHOOL
- 4 RUGBY SCHOOL THAILAND
- 6 THE SCHOOL SITE
- 7 LIVING IN THAILAND
- 9 THE TEEPSUWAN FAMILY
- 10 RUGBY SCHOOL UK
- 11 "THE WHOLE PERSON IS THE WHOLE POINT"
- 12 REMUNERATION PACKAGE AND HOW TO APPLY



# HEAD OF PREP AND FOUNDING HEAD MASTER

NIGEL WESTLAKE



Nigel Westlake has had 30 years experience in the UK independent education sector, 15 years as a Head. He qualified initially as a solicitor, before switching careers to become a schoolmaster at Sunningdale, The Old Malthouse and Aldro prep schools. His roles included Head of English and Drama, Director of Sport, Boarding Housemaster and Deputy Head. Whilst Head Master at Packwood Haugh and Brambletye Prep Schools, he oversaw significant increases in pupil intake and record scholarships.

Nigel's wife, Jo, is a trained concert pianist and was a highly-successful Director of Music at Packwood Haugh. She began her class music teaching career at Bangkok Patana – a highly-regarded international school in Thailand.

As Founding Head, Nigel has been involved in the development of Rugby School Thailand for two years prior to its opening in September 2017. He says: "I believe Rugby School Thailand offers a unique opportunity to bring the very best of the UK independent sector to Thailand. The quality of the site, the commitment of the owners and the support of Rugby School UK combine to offer something very distinct and very special.

"Of course, a further key ingredient is an outstanding school staff. We are seeking to appoint teachers with character, teachers who can inspire, teachers who are prepared to go the extra mile to help the children flourish. Teachers who, together, will help create one of the finest schools in Asia."

# HEAD OF SENIOR SCHOOL

ALAN BALL



Alan has had 32 years experience teaching in a variety of educational settings. He has a degree in English and History and a Diploma in Education from the University of New England. He has a Master's degree in Educational Leadership from the University of Queensland.

He has taught in boys' schools and co-educational schools in Australia, Japan and the UK. He started his career at St Joseph's College in Brisbane, before moving to Japan with his wife, Louise, where they both taught English in Japanese high schools. From Japan, Alan and Louise moved to Strathallan School in Scotland, where they taught English, and Alan was a Housemaster.

They returned to Australia when Alan was appointed Director of Boarding at Brisbane Boys' College. Alan went on to be Deputy Headmaster at Canberra Grammar School, before moving to his most recent role as Principal of Bishop Druitt College in Coffs Harbour. Alan and Louise have two adult children.

Alan believes that 'Rugby School Thailand will be an outstanding international boarding school in Asia. Its close links with the ethos of Rugby School UK, its extraordinary location and facilities, and the passion of its Thai owners, the Teepsuwan family, will ensure its success.'



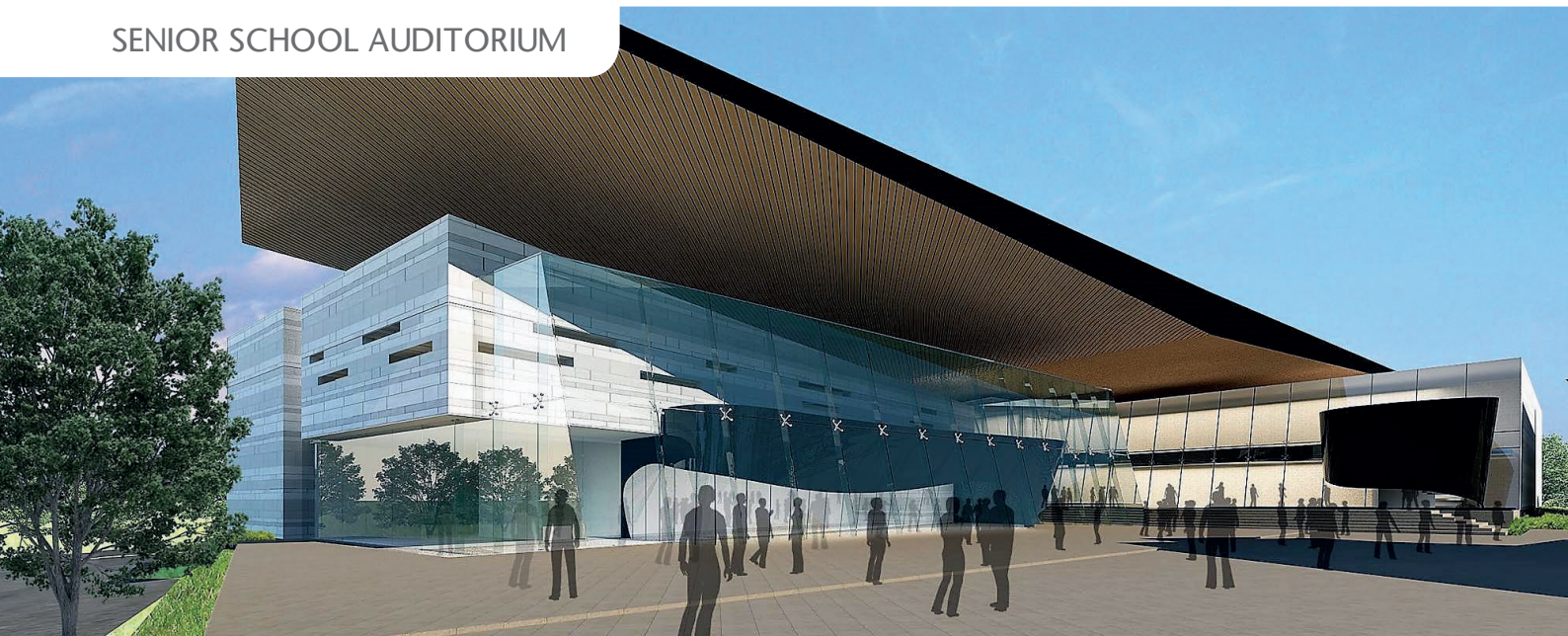
## PRE-PREP OVAL



## PREP SPORTS HALL



## SENIOR SCHOOL AUDITORIUM





# RUGBY SCHOOL THAILAND

Rugby School Thailand, a co-educational day and boarding international school set in 74 acres of glorious Thai countryside south of Bangkok, opened its doors in September 2017 for pupils aged 2 – 10 years, and in September 2018 will open for pupils aged 11-18. Boarding will be offered from September 2018.

Rugby School Thailand is selective with approximately 50% ex-pat and 50% Thai pupils. It is situated in stunning countryside in the district of Chonburi, approximately 12 miles from Pattaya's coastline and just 90 minutes by car from the centre of Bangkok.

Rugby School Thailand is the first and only sister school of Rugby School UK. The Governors, Head and senior staff at Rugby UK play a significant role in developing a school that truly reflects the values, standards and structures of Rugby UK and which bears comparison with the very best of the UK independent school sector.





# THE SCHOOL SITE

Location, Location, Location. Not only is Rugby School Thailand blessed with an extensive 80 acre / 187 rai site, it can also boast stunning views across the Chonburi countryside.

The space available has enabled the architects to create three separate areas for the Pre-Prep, Prep and Prep, each with facilities that are second to none.



- |                                    |                                |                           |
|------------------------------------|--------------------------------|---------------------------|
| 1. Parking                         | 14. Senior Classrooms          | 27. 400m Athletics Track  |
| 2. Admin                           | 15. Music + Drama Auditoriums  | 28. Training Golf Holes   |
| 3. Pre-Prep                        | 16. Senior Art Studios         | 29. Basketball            |
| 4. Pre-Prep Swimming Pool          | 17. Senior Science Centre      | 30. Tennis                |
| 5. Pre-Prep Activity Area          | 18. Sixth Form Centre          | 31. Futsal                |
| 6. Junior Dining Room              | 19. Learning Centre / Library  | 32. Running Circuit       |
| 7. Prep Swimming Pool (25m)        | 20. Senior Dining Room         | 33. Viewing Platform      |
| 8. Covered Sports Hall             | 21. Senior Day House           | 34. Boathouse             |
| 9. Prep Classrooms                 | 22. Senior Boarding Houses     | 35. Driver Area           |
| 10. Playing Fields                 | 23. Laundry                    | 36. Maintenance / Grounds |
| 11. Playing Fields                 | 24. Main Sports Hall           | 37. Walkway               |
| 12. Lake (Sailing/Kayaking/Rowing) | 25. Swimming Pools (50m + 25m) | 38. Villas                |
| 13. Prep Boarding Houses           | 26. Shaded Viewing Platform    | 39. Staff Accommodation   |



PREP HALL



PREP 25M SWIMMING POOL



MUSIC AND DANCE STUDIO





# LIVING IN THAILAND

As we have stated on our website: “It is our intention that all our staff see a post to Rugby School Thailand as a significant career step, and not simply a staging post on an international tour.”

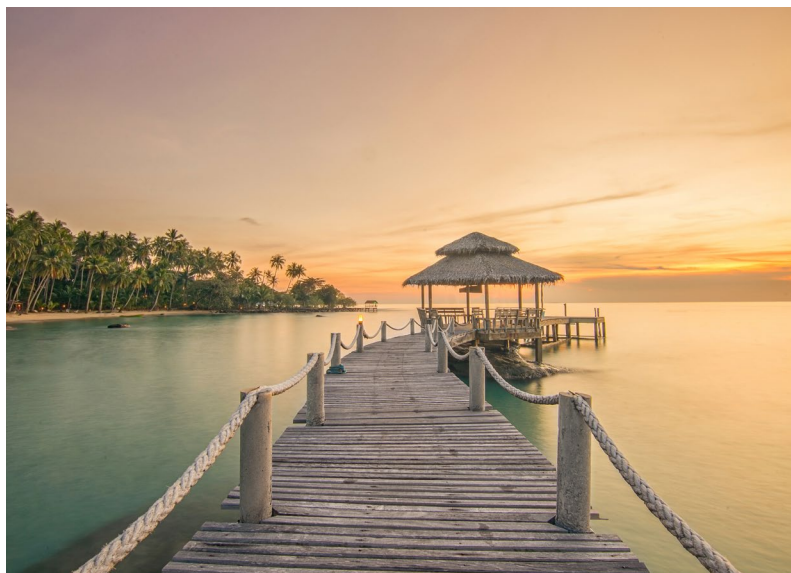
Nevertheless, Rugby School Thailand’s location provides a fantastic base for making the very most of all that South-East Asia has to offer.

More or less on our doorstep are some outstanding golf courses, an international motor racing track, a polo park, and the beach holiday resort of Pattaya. Only a little further afield is the resort of Rayong, and the beautiful islands of Koh Samet, Koh Kood and Koh Chang.

Rugby School Thailand is also within easy reach of Bangkok – a lively, vibrant city renowned for its restaurants, its markets, its hotels, its temples, its shopping malls...and its traffic! Happily the traffic is easily avoided by using the cheap and efficient ‘Sky Train’ or BTS.

U-Tapao International Airport is 35 minutes away from Rugby School Thailand by car, and Bangkok International Airport just over an hour away, so trips further afield both within Thailand (e.g. Phuket, Chang Mai) and to neighbouring countries are easily accessed. Weekend escapes to Singapore, Hong Kong or Kuala Lumpur, for example, are straightforward thanks to Thailand’s positioning as the hub of South East Asia.

The cost of living in Thailand is, overall, lower than in the West, though western goods will be similarly priced. If you shop prudently, then you can comfortably maintain a quality, high standard lifestyle. On arrival, we will help you set up a bank account for payroll purposes and to enable you to obtain an ATM card.



Thailand has a tropical monsoon climate and so the temperature is warm throughout the year, with March and April the hottest months. The rainy season peaks around August / September and temperatures are mildest (late 20's) from October through to February.

The sunshine and high temperatures mean that air-conditioning is everywhere. In fact, UK teachers will probably rejoice in the fact they will no longer have to teach in the occasional soporific summer heat of UK classrooms.

Private health care in Thailand is of a very high standard. Indeed, medical tourism to Thailand is commonplace. There are several international standard hospitals near to Rugby School Thailand, one of the closest (15 minutes away) being Bangkok Hospital Pattaya ([www.bangkokhospitalpattaya.com](http://www.bangkokhospitalpattaya.com)).

As part of the induction process, Rugby School Thailand will provide its teachers with a course on Thai Culture and customs. It is, for example, customary to stand to attention when the Thai national/royal anthem is played. Of course, the Thai people are known for being welcoming and friendly ('the land of smiles') and so the initial adjustment is quite easy.

We will also provide new teachers from overseas with a basic introduction to the Thai language. Nothing too complicated, but enough to respond appropriately to a Thai greeting, count to 20, go shopping and negotiate a taxi journey. Having said that, many Thais speak and understand a little English, so it is generally possible to make oneself understood in English when out and about.

On the subject of transport for teachers, the school will provide a daily shuttle service to and from local landmarks/shopping areas. Some staff may choose to purchase their own cars or, more cost-effectively, to rent for short periods. To drive you will need an international or local driving licence.

Please feel free to contact us if you have any specific questions about living in Thailand. We are always happy to help.





# THE TEEPSUWAN FAMILY

Rugby School UK, as one of the foremost independent schools in the UK, has been approached by many investors over the years with a view to developing a Rugby School overseas. It was not averse to overseas development, but was determined that any Rugby School overseas must be able to replicate, as far as is reasonably possible, the ethos and standards of Rugby UK. It was not interested in a mere name-lending franchise, nor a school without boarders, nor a school on a small site, nor a school that was to be developed for profit alone. It was, in other words, patiently and prudently waiting for the right opportunity to come along...

Wisdom Enterprise, a company wholly owned by the highly-respected Teepsuwan family from Bangkok, owns 1,260 rai (500 acres) of land in the Chonburi countryside.

Two members of the Teepsuwan family, Nataphol and Taya, sent their children as boarders to top independent schools in the UK (Brambletye Prep, Harrow, St Edward's Oxford). They saw great value in the approach taken by these schools, not only in respect of academic standards, but also with regard to breadth of experience and the building of character. The Teepsuwans accordingly determined to develop a school on their Chonburi site that would reproduce the very best of the world-renowned British independent sector, striving for excellence in every aspect of school life.

After a lengthy and rigorous search by the Teepsuwans for a suitable UK partner school, during which many of the top UK independent schools expressed an interest, an agreement was reached with Rugby School and plans for Rugby School Thailand began...



# RUGBY SCHOOL UK

Rugby School, one of the UK's leading and most prestigious private schools, is a co-educational boarding and day school situated in the English county of Warwickshire. The School has 800 pupils aged 13 to 18 housed in 16 houses, 13 of which are for boarders.

Rugby School was founded in 1567. By 1667 Rugby was acquiring a name for scholarship and it is one of the original ten English public schools defined by the Public Schools Act 1868.

In 1823 it is said that, during a game of football at the school, Rugby pupil William Webb Ellis caught the ball and, 'with a fine disregard for the rules... took the ball in his arms and ran with it thus originating the distinctive feature of the rugby game'.





## “THE WHOLE PERSON IS THE WHOLE POINT”

Rugby’s greatest Head Master Dr Arnold (1828–42) transformed British education and formed the model that many other schools have since adopted. He recognised a modern concern - that education should address the formation of character, going beyond an understanding of learning as simply the acquisition of knowledge.

Fundamentally, the School believes in a holistic, all-round education. In the words of the Head Master, Peter Green: “Our goals are to foster academic excellence, to nurture individual talents, and to equip our boys and girls with the tools to maximise their individual learning. Critical thinking, memory skills, goal setting and the use of new technology are blended with reflection, self-awareness and stillness. And through service we aim to form young people who can contribute intelligently and effectively to the welfare of society. In other words, ‘the whole person is the whole point’.

The Rugby ethos, which we shall continue to uphold, provides the reassurance of a complete education: mind, body and spirit.”



# REMUNERATION PACKAGE

Rugby School Thailand recognises that its most important investment is in the quality of its teachers. As such, staff will receive an excellent salary and package commensurate with the responsibilities of their position and the size of the school.

## HOW TO APPLY

### PREP AND PRE-PREP APPLICANTS...

...should send a covering letter (no more than 1 side of A4), a recent photograph and a completed application form to the Founding Head Master and Prep Head, Nigel Westlake, at [prepcareers@rugbyschool.ac.th](mailto:prepcareers@rugbyschool.ac.th) by the relevant closing date (see job description). If you have further questions, please email Nigel Westlake at [prepcareers@rugbyschool.ac.th](mailto:prepcareers@rugbyschool.ac.th).

### SENIOR SCHOOL APPLICANTS...

...should send a covering letter (no more than 1 side of A4), a recent photograph and a completed application form to the Head of Senior School, Alan Ball, at [seniorcareers@rugbyschool.ac.th](mailto:seniorcareers@rugbyschool.ac.th) by the closing date (see job description). Should you wish to have an informal conversation or if you have further questions please email the Head of Senior School, Alan Ball at [aball@rugbyschool.ac.th](mailto:aball@rugbyschool.ac.th)

An application form can be found on our TES job website or on the Rugby School Thailand website: <https://www.rugbyschool.ac.th/careers/>

### SAFEGUARDING

Rugby School Thailand is committed to safeguarding and promoting the welfare of children and expects all staff to respect this commitment. The post is subject to an enhanced DBS check (or equivalent for teachers currently working overseas) and satisfactory references.