

About Fynamore

Opened in September 2001, Fynamore is a popular two form entry school with modern facilities which caters for the education and needs of a diverse range of children and families from the surrounding area. We have our own school kitchen, technology in classrooms to support learning and other extensive learning spaces, including a dedicated library space, reflection garden, forest school facilities, playing fields and playgrounds.

Our children are proud of the school and are encouraged to contribute to the life of the school by taking on additional responsibilities. The School Council contributes to school development and is central to gathering views and ideas from children across the whole school. We are proud of our involvement in and contribution to the local community and area. Our children are regularly involved in community activities and events, including sports programmes, the town school Remembrance Service, Calne in Bloom, the annual community music and arts festival and the town summer and winter festivals.

Improving standards across all year groups has been and remains a key focus for our school. We have a highly skilled and well-established workforce that includes specialist practitioners and mentors. All staff members work tirelessly to teach and support our children. They are committed to the inclusive ethos in our school and seek out opportunities to develop their own practice and share learning with others. We have worked with local schools to develop maths mastery, assessment and moderation and work with Secondary schools to offer additional enrichment opportunities and prepare our children for their onward education.

Our support staff help our children to improve their wellbeing as well as their learning. We have a

dedicated pastoral team who manage the SEND provision as well as both accelerated learning and able, gifted and talented interventions. We also have two pupil premium mentors, our own ELSA provision and are supported by a Parent Support Adviser.

We encourage parents to be involved in the life of the school and work hard with them to support their children and the school values. Children have regular opportunities to share their learning with parents through assemblies and homework. Our Friends of Fynamore Association run many events throughout the year to raise funds for school equipment.



"I enjoy all our lessons because no matter how boring or hard it is, they make it fun!"

Key School Information

Age Range	4 – 11 years
School Group Size	3
Other	Co-educational
Location	Calne, Wiltshire
Type of School	Community School
Organisation	Headteacher
	14 classes
Current teaching Staff	Deputy Headteacher
	4 Team Leaders
	(2 UPS & 2 MPS)
	10 Teachers
	(2 UPS) (7 FTE) (1 NQT)
	3 Teachers (PPA Cover)
	1 SENCO (UPS) (0.4)
	1 TLR for Child Protection/ Safeguarding
Non-Teaching Staff	2 x Pupil Premium
	Learning Mentors
	Play Therapist (0.19)
	25 x TAs
	Office Manager/SBM
	Clerical Staff (1.5 FTE)
	2 x Caretakers (Job Share)
	4 x Cleaners
Children On Roll	417
Average Class Size	30
Attendance 2016/17	96.7%
Date Established	September 2001
% of children on FSM	7.58 %
% of children with SEN	28.61 %
% of children with EAL	4.89 %

Phonics Screening Test

% of children who met pass mark
 2015 – 55%
 2016 – 77%
 2017 – 87%

SATS Results - 2017

Key Stage 1 Results

Reading

25% - working below age related expectations
 75% - working at + age related expectations
 27 % - who achieved high level of attainment

Writing

32% - working below age related expectations
 68.3% - working at + age related expectations
 2% - who achieved high level of attainment

Mathematics

22% - working below age related expectations
 78.3% - working at + age related expectations
 7% - who achieved high level of attainment

Key Stage 2 Results

Reading

33% - working below age related expectations
 67% - working at + age related expectations
 19% - who achieved high level of attainment

Writing

26% - working below age related expectations
 74% - working at + age related expectations
 20% - who achieved high level of attainment

Mathematics

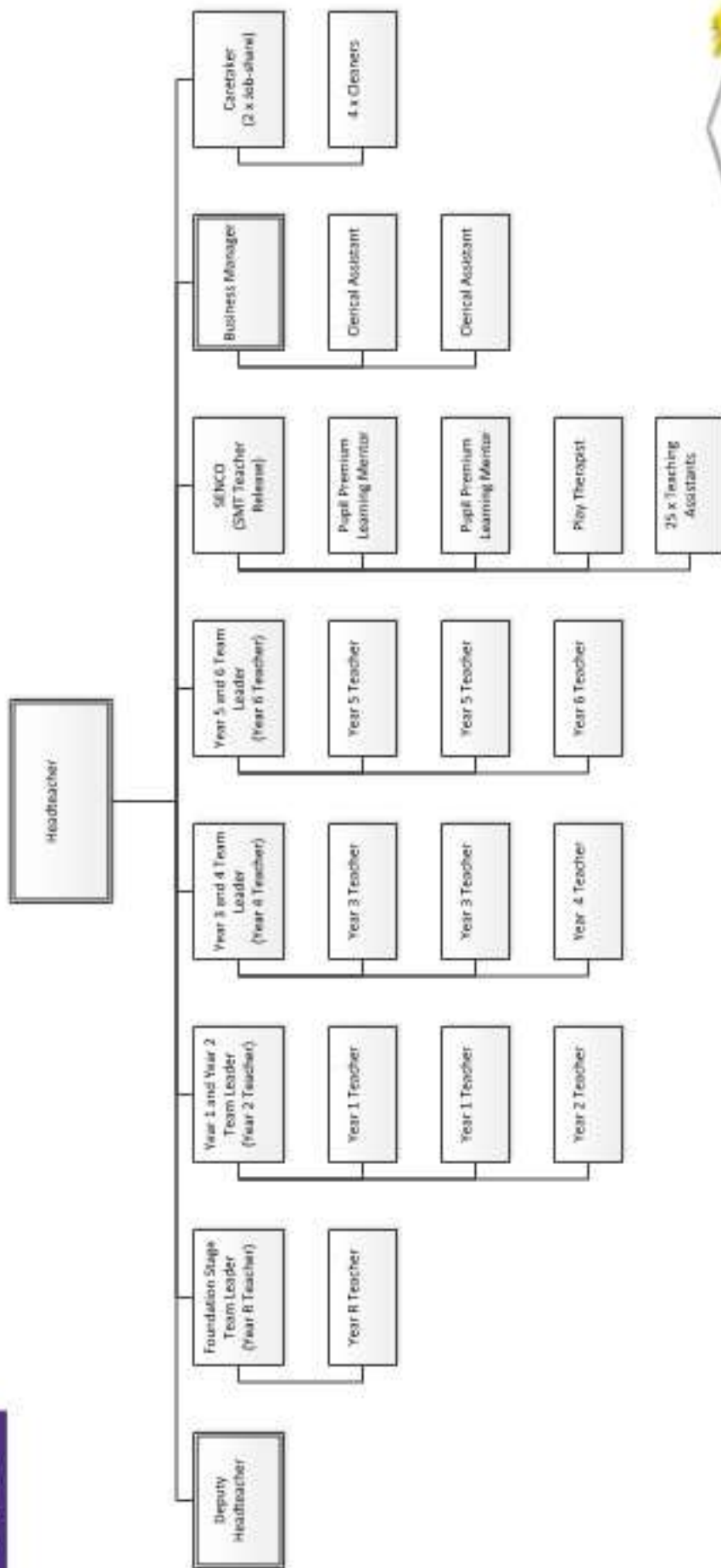
35% - working below age related expectations
 65% - working at + age related expectations
 11% - who achieved high level of attainment



Fynamore Primary School

Structure Chart

Date – February 2018



Our School Values

Here, at Fynamore Primary School, we strive to provide a secure, stimulating environment which develops unique talents for every individual, leading to an absolute passion for limitless life-long learning!

At Fynamore, we prepare children for their future, they will become independent, self-confident and exceed all expectations.

We are.....

The School Where Children Shine

At Fynamore Primary School we will:

Listen to our children: we pride ourselves on our open and honest communication lines. Pupil to teacher communication is conducted with integrity to ensure our children feel valued and heard.

Protect our children: we have worked hard to develop and implement rigorous and un-compromising safeguarding processes and procedures. Our catchment area generates significant safeguarding issues which we address with professionalism, empathy and honesty. Our team are trusted by our children and they feel comfortable in talking to them with any concerns that they may have.

Understand our children: We understand the differing needs of our children. Whilst working hard to support children with individual challenges we also strive to provide those willing, gifted and talented children with new and interesting opportunities. We use proven teaching practice to unlock the potential of each child and explore his or her particular talents.

Have fun: Fun is part of our school ethos. We recognise that for education to be effective we must ensure that learning is balanced with enjoyment, safety, security and stability whilst keeping honest

to our values. Our school is home to a stimulated and vibrant community of children.

Value our teachers: We have a team of motivated and happy staff. Our team are able to stretch and challenge themselves, as well as express professional opinions through their teaching and pupil engagement. We listen to concerns and views whilst working with them to provide a happy and stimulating workplace.

Recognise our teaching strengths: Our reception teaching staff are Outstanding and are sector leading in their practices and approaches. Teachers are allowed to demonstrate their capabilities with empowerment and autonomy.

Recognise our challenges: Whilst many areas of our school are to be admired, we must not be complacent. How we deal with difficult children is something we are keen to explore further and we are open to looking at different options and approaches.

Value parent contribution and engagement: Parents are valued and encouraged to play an active part in our school. Through open and honest dialogue with our SMT, we take and act on feedback provided by parents.

Be inclusive: Everyone (children, staff or parent) will always feel part of our team. We operate with complete inclusivity. Our culture and approach to diversity is something to be admired.

Value external contribution: We recognise the contribution that others can make to our children's learning. We welcome visitors into the school and participate in local and national events. We encourage and stimulate interest in the world around us.

"There are many jobs available for people to make themselves feel proud."