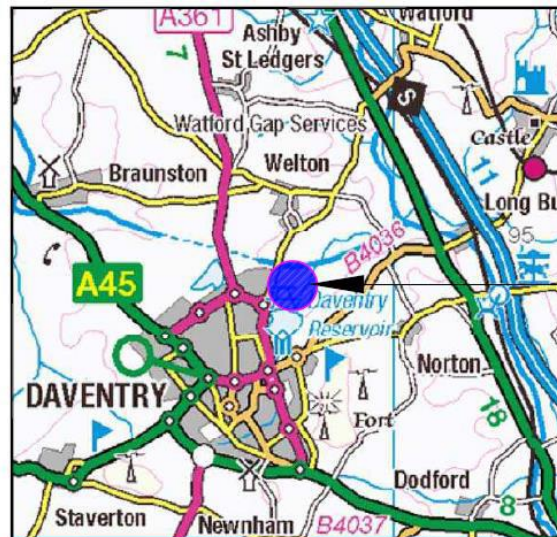


## Monksmoor Park Church of England Primary School



THE SITE

**Monksmoor Park** is an outstanding example of Britain's natural beauty set to the north east of Daventry, nestled alongside the Grand Union Canal with many acres of farmland stretched out to the north and east and Daventry Reservoir and Country Park to the south. The developer, Crest Nicholson, has been inspired by the Garden City concept, the brainchild of Ebenezer Howard, which aims to combine the best of town and country living to create beautiful, well planned, healthy and vibrant communities. It is easy to forget that Daventry town centre is just minutes away by car. In addition, this development has excellent transport links with close proximity to the M1 or trains into London from Long Buckby.



**Monksmoor Park** is made up of approximately 1000 homes. The impact of this on the local infrastructure has resulted in the need to build a new school which is due to open in September 2018. In December 2017 the local authority confirmed that the school would be operated by Peterborough Diocese as a voluntary aided Church of England Primary School.

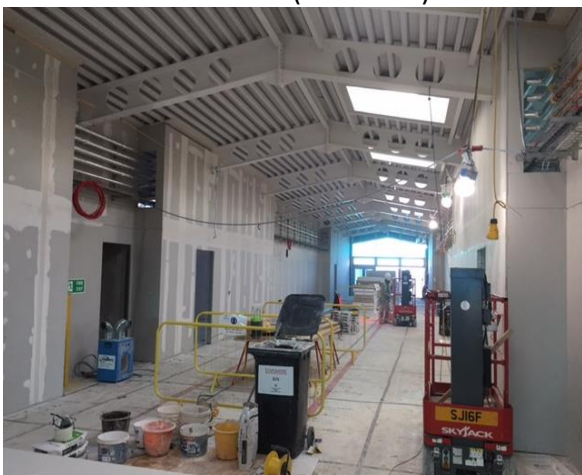
**Monksmoor Park Primary School** is a £4.2m purpose built primary school and nursery due for completion in May 2018. It is single-storey Sunesis building consisting of open plan corridors, a multi-use sports hall and teaching spaces.



Main school entrance (Feb 2018)



Nursery entrance (Feb 2018)



Internal works (Main entrance and street)



Classrooms in progress (Feb 18)