



Candidate Pack

Teacher of PE

(female)

MPS





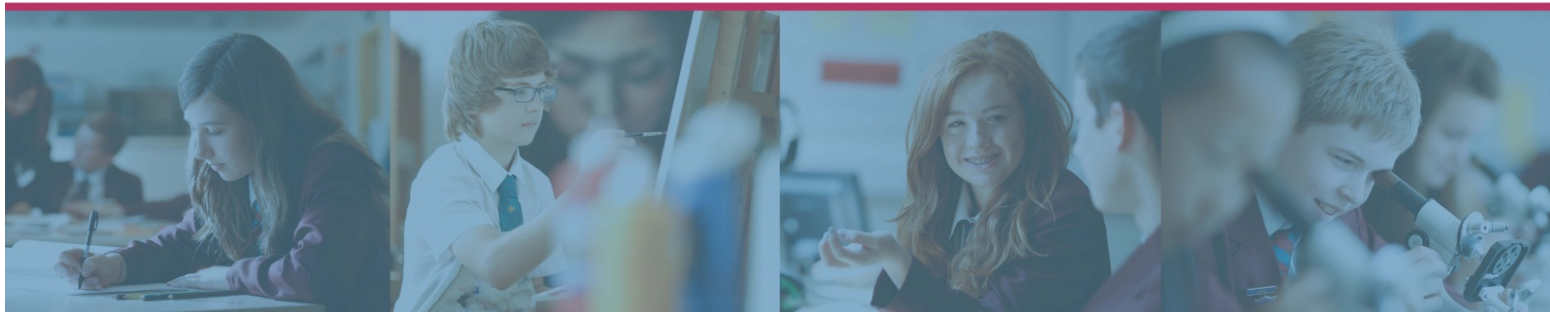
Dear Candidate

Thank you for your interest in the advertised post. The brochure has been designed to give you, a potential applicant, the essential information about Jubilee High (plus details on the vacancy) so you can decide if this will be the next step in your career.

"Committed to excellence in learning and teaching" is our mantra which underpins our school's philosophy. We are a school community which does not stand still. At Jubilee High, we are committed to providing staff with first-class opportunities for training and development. Our aim is to be a centre of excellence where staff aspire to be at the cutting edge of the profession. We want everyone in our school community to feel challenged to succeed but confident of steadfast support.

If this ethos appeals to you, then we hope you will apply to join our team and support our drive to become outstanding and we look forward to receiving your application. For more information, and to see our school video, please visit www.jubileehigh.surrey.sch.uk.

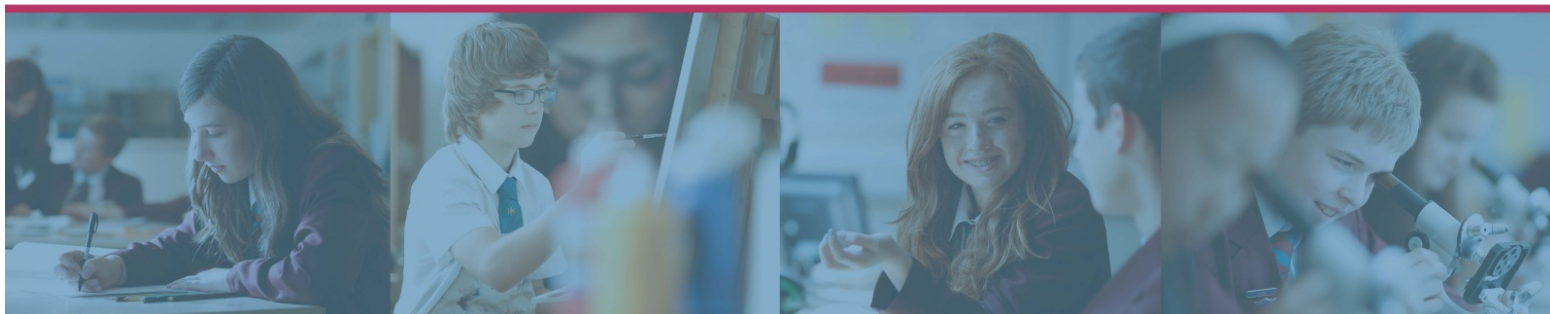
Simon Baker
Head of School





Index

Welcome	2
(An introduction to our school)	
Index	3
Section 1 – Vacancy Information	
Profile of Vacancy	4
Person Specification	6
How to apply	7
Section 2 – General Information	
Our School	8
Facts and Figures	8

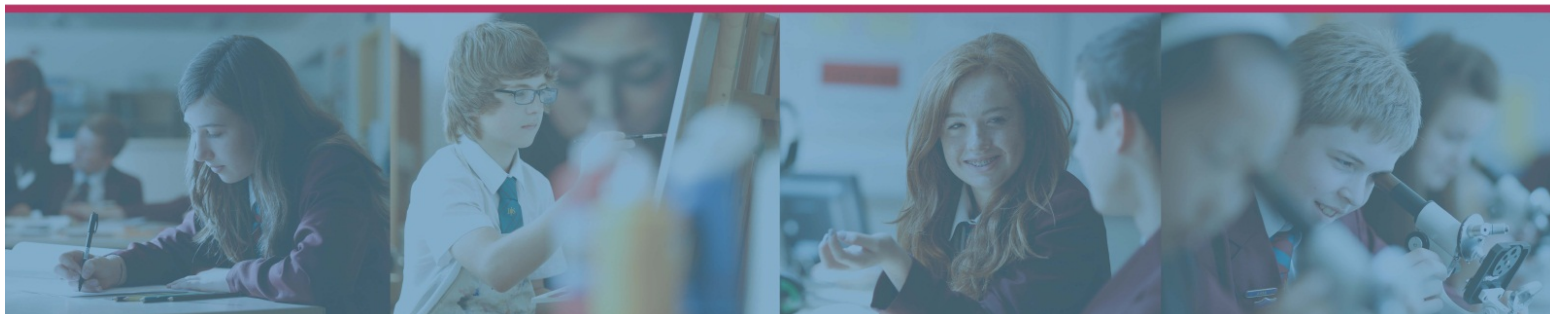




The PE department is made up of five full-time members of staff. The department runs examination courses in GCSE PE and VCert Sport. The school also offers GCSE Dance.

The school provides all students with excellent facilities including a sports hall, gym, squash courts, PE teaching classroom, MUGA, extensive playing fields and access to a fitness suite and dance studio. The department also offers rowing to its students and has its own rowing suite.

The contribution to extra-curricular sporting activities is essential to the post. The ability to offer a second subject is a pre requisite of the post, preferred second subject would include Mathematics, Science, English, MFL or Geography.

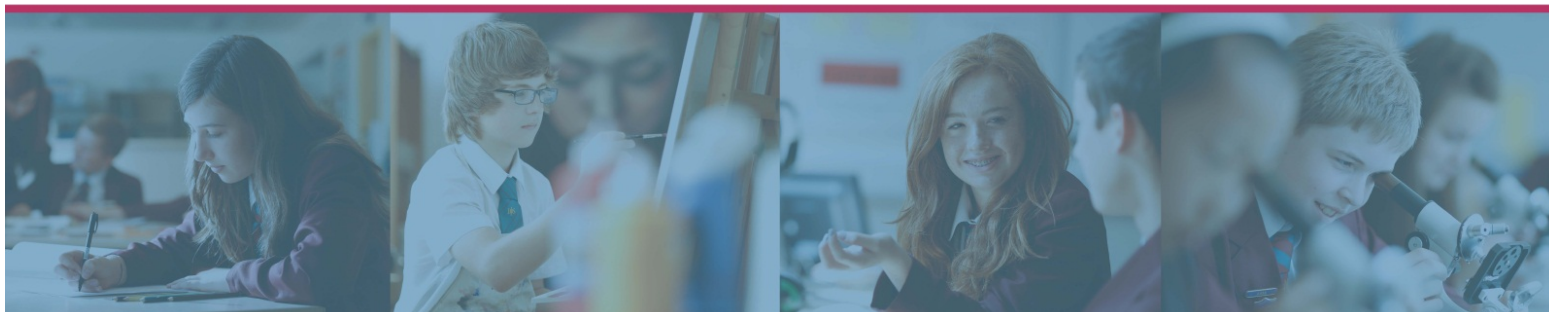




JUBILEE HIGH SCHOOL – JOB PROFILE

JOB TITLE : Teacher of PE(Main Scale, Classroom Teacher)

Teaching, learning and progress	<ul style="list-style-type: none"> To ensure a high quality learning experience for students according to their educational needs, meeting internal and external quality standards. Lessons to be planned using a variety of delivery methods which will stimulate learning and ensure progress appropriate to student needs and demands of the syllabus. To set and mark work carried out by the student in school and elsewhere, supporting the school's expectations. To use data and assessment to inform planning and intervention. To assess, record and report on the attendance, progress, development and attainment of students and to keep such records as are required adhering to reporting deadlines. To be responsible for the care of the teaching rooms and equipment during lesson or tutor group time. To maintain discipline in accordance with the school's procedures and to encourage good practice with regard to punctuality, behaviour, standards of work and homework. To contribute to the preparation and resourcing of Department Schemes of Work and policy development, working with other colleagues to develop and teach these. To attend Parents' Evenings, meetings and events as specified in the school's annual calendar. To contribute to Department enrichment activities.
Form Tutor	<ul style="list-style-type: none"> To be a Form Tutor to an assigned group of students. To register students, accompany them to assemblies, encourage their full attendance at all lessons and their participation in other aspects of school life. To provide 'first line' support and guidance to students to meet their personal development and achievement needs to promote the general progress and wellbeing of individual students and of the Form Tutor Group as a whole. To liaise with a Head of Year to ensure the implementation of the school's Year System and to promote involvement in House/Year activities. Evaluate, monitor and report on the progress and achievement of each student in terms of his or her curricular achievements and extra-curricular activities. To monitor behaviour, promote school rules and encourage improvement. To alert the appropriate staff to problems experienced by students and to take suitable actions to help resolve them. To communicate, where necessary and after consultation with the appropriate staff, with the parents and with persons or bodies outside the school concerned with the welfare of individual students. To contribute to the House/Year Tutor Programme according to school policy.
Professional Development	<ul style="list-style-type: none"> To take principal responsibility for one's own Professional Development. To participate in arrangements for performance management. To support colleagues in their Professional Development.
School Community	<ul style="list-style-type: none"> To actively promote the school's ethos in spiritual, moral and social responsibility. To act as a positive role model. To comply with the school's Health & Safety and safeguarding policies and undertake risk assessments as appropriate and designated supervisory duties. To attend meetings as per calendar. To play an active role in the realisation of the school's Development Plan and contribute to whole school initiatives.





TEACHER OF PE – PERSON SPECIFICATION

<u>Essential</u>	<u>Desirable</u>
<p><u>Qualifications</u></p> <ul style="list-style-type: none"> • Qualified teacher status with degree • Sound academic background <p><u>Experience</u></p> <ul style="list-style-type: none"> • Secondary trained <p>[This post is suitable for an enthusiastic person for her/his first teaching post or for an established teacher]</p>	<ul style="list-style-type: none"> • Evidence of commitment to further professional development • Ability to offer additional subjects to teach
<p><u>Knowledge</u></p> <ul style="list-style-type: none"> • An awareness of current developments in PE teaching, particularly the National Curriculum at KS3, GCSE at KS4. • Ability to offer a second subject, including either English, Mathematics, Science, MFL or Geography 	<ul style="list-style-type: none"> • An appreciation of current developments post 16
<p><u>Philosophy</u></p> <p>Commitment to:</p> <ul style="list-style-type: none"> • The principle of comprehensive education • Staff participation in decision making and consultation • The pursuit of high standards, both academic and behavioural • Quality provision for all pupils including SEN/G&T • Equality of opportunity • Maximising contributions from parents, governors and the community 	
<p><u>Skills</u></p> <ul style="list-style-type: none"> • Excellent communicator • Efficient organiser • The ability to initiate change • A high degree of creativity • Effective teaching and leadership skills • The capacity to function creatively and generously in a mutually supportive team • Ability to carry out administrative tasks effectively 	<ul style="list-style-type: none"> • Confident user of ICT
<p><u>Personal Qualities</u></p> <ul style="list-style-type: none"> • Skill in communicating with and motivating pupils of all abilities. • Ability to contribute with flair and commitment to the effective performance of the department. • Capacity to implement curriculum change. • Evidence of working in a team • Vision, warmth, energy, enthusiasm, caring, resilience • Good sense of humour 	





Contact details and how to apply

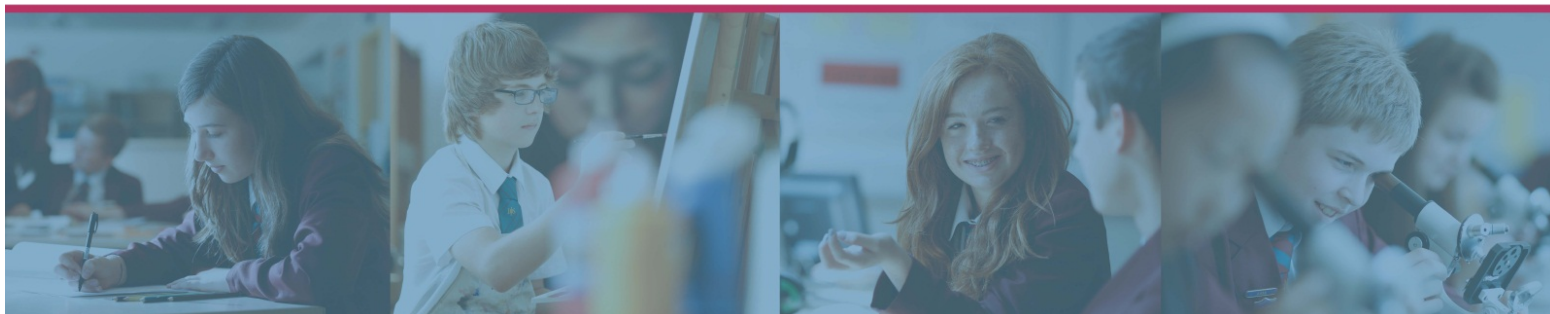
Designated contact for this vacancy:

- Name Mr Simon Baker (Head of School)
- Number 01932 884800
- Email address s.baker@jubileehigh.surrey.sch.uk

Please complete the school's application form and return this electronically, to j.roberts@jubileehigh.surrey.sch.uk. Alternatively, please submit the TES application form.

Closing date: processed on receipt of application

The school is committed to safeguarding and promoting the welfare of children and young people, and expects all staff and volunteers to demonstrably share this commitment. Any successful candidate will be required to undertake an enhanced disclosure check.





General Information

Jubilee High School is a thriving 11 – 16, mixed, comprehensive school in Surrey. It is adjacent to the M25 and boasts good rail and road connections to London and the rest of the South East. We converted to academy status in September 2013 as part of the Bourne Education Trust and Jubilee is an active partner within the trust's 12 schools.

The school occupies a large, attractive site on a campus which includes St Paul's Primary School, St Paul's Church, and Addlestone Leisure Centre. The school boasts good facilities which include suited departments, IT suites and a purpose built theatre. Jubilee High serves the local community which has a broad social and economic mix of people.

At Jubilee a great deal of emphasis is also placed on extra-curricular life at the school and outside the formal curriculum there are numerous opportunities for students to take part in a wide range of activities such as drama, sport, music, international exchanges, Duke of Edinburgh and all of our staff support this enrichment drive.

Jubilee High is a good school (Ofsted 2015) and the drive in the next phase of our development is to achieve 'Excellence' with regard to Respect, Resilience and Responsibility. The school belongs to the Bourne Education Trust and as a primary/secondary Surrey based multi-academy trust, we ensure staff are afforded opportunities to further develop their careers in our schools.

We take recruitment very seriously and want to do all we can to find the right people for our Staff say that working collaboratively with other members of staff is a strong and positive feature of the school. Candidates are welcome to contact the school for more information about specific departments or even pay us a visit. Please visit our website, www.jubileehigh.surrey.sch.uk where you can find the latest news about the school.

Facts and Figures

The School Day	
8.40	Assembly/Registration
9.00	Lesson 1
10.00	Lesson 2
11.00	Break
11.20	Lesson 3
12.20	Lesson 4
13.20	Lunch
14.00	Lesson 5
15.00	End of school
15.15	Extra-curricular activities

School Statistics	
Type of School - Mixed Comprehensive, Academy	
Location	Surrey
Age Range	11 – 16
Total Number of Students	670
Number of Teaching Staff	44
Total Number of Staff	86
Progress 8 Score	+ 0.2
OFSTED	GOOD grading

