



# Garden International School

Bringing Out The Best In You Since 1951

## INFORMATION FOR OVERSEAS APPLICANTS FOR TEACHING POSITIONS

### 2019 - 20

# Table of Contents

<b>1. INTRODUCTION</b>	<b>5</b>
1.1 What you will experience whilst working at GIS	
1.2 The school and the school community	
1.3 Governance	
1.4 Child Protection	
1.5 Professional learning	
1.6 Our student and their families	
1.7 The Curriculum	
1.8 Learning at GIS	
1.9 GIS Learner Skills	
1.10 Project Athena	
1.11 Academic results	
1.12 English as an additional language	
1.13 Learning support	
1.14 Co-curricular activities	
1.15 What happens once you are appointed	
<b>2. LIVING IN MALAYSIA</b>	<b>15</b>
2.1 Malaysia Truly Asia	
2.2 Living in Malaysia	
2.3 Geography and climate	
2.4 Cost of living	
2.5 Setting up costs	
2.6 Interest free setting up loan	
2.7 Accommodation	
2.8 Prices	
2.9 Shopping guide	
2.10 Banking	
2.11 Transport	
<b>3. CONTRACTS AND BENEFITS</b>	<b>21</b>
3.1 Salary and Contracts	
3.2 Superannuation	
3.3 UK National Insurance	
3.4 Health care	
3.5 Baggage allowance	
3.6 Marital status	

4. **OTHER ITEMS OF INTEREST**
- 4.1 Immigration
  - 4.2 Documents to bring/send
  - 4.3 Criminal Record Check
  - 4.4 Dress code
  - 4.5 Safety and security
  - 4.6 Electricity & Television
  - 4.7 Internet access & computer
  - 4.8 Income Tax

23

## YOU WANT TO LIVE ABROAD?

### Advice on Making the Adjustment

*“Patience, an open mind and a ready sense of humour will get you through the rough times.”*

### TEN COMMANDMENTS OF RELOCATING OVERSEAS

1. Learn as much as possible about the host country in order to have realistic expectations.
2. Anticipate a challenging adjustment period of at least SIX months. Do not decide if you like it until these six months have passed.
3. Do not expect to replicate your current lifestyle. Look for what is there, not for what isn't.
4. Develop tolerance for ambiguity and frustration by being flexible and open towards the new culture.
5. Look for ways to strengthen and maintain your enthusiasm.
6. Do not expect of the new culture the same sense of urgency or availability of conveniences.
7. Try to understand the host country perspective.
8. In all things be flexible.
9. Maintain a sense of humour, but most importantly be ready to laugh at yourself.
10. Surround yourself with positive people. Do not allow negative comments and attitudes to darken your outlook.

We hope that this guide is useful. The School, as a caring employer, takes great pains to ensure that newly appointed teachers are helped to settle into their new environment as quickly as possible. The majority of us have been in the same situation of moving to a new school in a new country. We therefore understand the anxieties and uncertainties that newly appointed teachers face. By working together as a team we are able to remove many of those uncertainties and allow new teachers to quickly settle into their new home.

**NOTE:** *GIS wishes to emphasise that all information contained in this guide is correct at the time of printing and is subject to change. Any changes will be incorporated in subsequent editions.*

## INTRODUCTION

Thank you for taking the time and interest to apply for a teaching position at Garden International School, Malaysia. We trust the following information will act as a useful guide in helping you understand more about the school and about setting up and living in Malaysia. The accompanying links should also provide you with a glimpse into the GIS community.

Garden International School (GIS) is one of the world's leading international schools with a strong academic track record. Our high quality, holistic education ensures that our students leave us well equipped for life; it is not surprising that GIS students are in demand across the world and are sought after by the world's best universities. GIS students benefit from our unique, innovative teaching and learning philosophy, integrating knowledge and skill development, supported by 65 years of heritage and a thriving alumni network.

Accredited by the Council of International Schools, GIS is one of the oldest and most distinguished schools in Malaysia with a main campus in Bukit Kiara, Kuala Lumpur and an Early Years Centre in Desa Sri Hartamas, a 10 mins walk from the main campus.

If you have applied for a position at the school or are thinking of applying, we hope that the following information will be useful to you.



*GIS: Bringing out the best in you*

## WHAT YOU WILL EXPERIENCE WHILST WORKING AT GIS

- *A truly international environment that provides students with the opportunities to develop international understanding.*
- *High achieving students who are tremendously motivated and enjoy coming to school.*
- *A forward looking school that believes in continuous improvement.*
- *An atmosphere that allows you to do what you are trained to do, teach rather than control.*
- *Working with a highly qualified professional team.*
- *Access to 2 hours of dedicated Professional Learning Time every Friday*
- *Working with supportive parents who value education.*
- *A structured British style curriculum with an international flavour that values active participation from students.*
- *Working in a well resourced and conducive learning environment.*
- *Working in a school with excellent facilities and what is probably one of the best ICT resourced schools in the region.*
- *An extensive range of co-curricular activities that develop and extend student learning.*
- *An extensive programme of local and international field trips.*
- *A truly enjoyable lifestyle in a city that has excellent infrastructure.*
- *The opportunity to travel extensively and experience the beauty of Malaysia and S.E.Asia.*

GIS prides itself on providing a safe, engaging and exciting working environment. GIS teacher insights, below, provides a glimpse into working at GIS.



*GIS Teacher Insights*

‘GIS Spotlight’ also features individual and group personalities within the GIS community allowing you to gain further insight into school life, e.g. students, teachers, parents and alumni. Check out what they have to say via this [LINK](#).

## THE SCHOOL AND THE SCHOOL COMMUNITY

Garden International School was founded in 1951 and is the largest international school in Malaysia with an enrolment of approximately **2,000** students, aged 4-18 years. The main campus is situated in a pleasant residential suburb of Kuala Lumpur, which has become the main centre for expatriate life in the city. A purpose designed Early Years Centre, opened in September 2008, and is located approximately 1km from the main Kuala Lumpur Campus (please note if you have nursery or reception age children they will attend the EYC).

Garden International School is a member of Taylor's Education Group, Taylor's Schools, which comprises, Garden International School, The Australian International School of Malaysia, Nexus International School (Putrajaya), Nexus International School (Singapore) and Taylor's International School (Kuala Lumpur and Puchong). Taylor's Education Group also operates Taylor's University and Taylor's College in Subang Jaya, all of which are renowned institutions of further and higher education situated within Kuala Lumpur.

Garden International School benchmarks its services and quality of education against the highest standards. GIS is accredited by The Council of International Schools (CIS) and Western Association of Schools and Colleges (WASC).

The School is a very active member of the Federation of British International Schools of South and East Asia (FOBISIA), and is one of the founding members of the Association of Malaysian International Schools (AIMS). International sporting and cultural opportunities are provided to students through these organisations and GIS staff have the opportunity to participate in the extensive Professional Development and teacher networking opportunities provided by these organisations.

The School is accredited by The University of Cambridge International Examinations Board for IGCSE and A level exams. GIS is also a centre for EDEXCEL exams.

The school has a smoke free environment policy. A discrete area has been set aside for those who do smoke.



## GOVERNANCE

The Governance of the school is the responsibility of the Board of Governors. The overall management of the of Taylor's Education Group is overseen by the President, Taylor's Schools. The day to day Management and operations of GIS are the responsibility of the Principal.

## OUR STAFF

Senior positions within the School are:

### Principal:

Mark Ford, BSc Mathematics, PGCE

### Head of Secondary:

Deputy Head, Admin

Matthew Corbett, BPhEd, BTeach (NZ), MA. Ed (HK)

Deputy Head

Lim Lee Ping, BSc (Hons), Dip Ed

Deputy Head

Emily Hopkinson, BSc (Hons), PGCE, MA

Assistant Head (KS5)

Amy Ward, BSc (Hons), PGCE, MA

Assistant Head (KS4)

Lindsay Round, BSc (Hons), PGCE

Assistant Head (KS3)

Laura McGregor, BSc (Hons), PGCE

Daniel Norbury, BSc (Hons), PGCE

### Head of Primary:

Deputy Head

Colter Watt, BSc (Hons), MA in Ed L'ship & Mgmt

Deputy Head/ Head of Early Years

Ashley Cornfoot, BA (Hons), PG Dip Ed Mgmt

Jo Rice, BA (Hons)

Asst Head: Head of Upper School

Steven King, BA (Hons), PGCE

Asst Head: School Culture and Partnerships

Matt Sheldon, BA (Hons), MA

Asst Head: Head of Lower School

Katy Bannister, BA (Hons)

Asst Head: Operations & Development

Etienne Visser, BEd (Hons)

### Whole School Directors/ Deputy Heads:

Director of Innovative Learning

Damian Graizevsky, BA (Hons), PGCE, NPQH

Director of Inclusion

Moira Hall, BEd (Hons)

Director of Professional Learning

David James, BA (Hons), PGCE, MA in Ed L'ship & Mgmt

Our staff are made up of teachers from a number of different countries who are mainly recruited in the UK, Australia and Malaysia.

## CHILD PROTECTION

At GIS we are committed to safeguarding and promoting the welfare of young people and expect all staff to share this commitment. Everyone who comes into contact with children and their families and carers has a role to play in safeguarding children. We expect all staff to share this commitment. All posts are subject to an enhanced DBS disclosure/police check and full reference checks. Child Protection training forms an integral part of induction and staff receive regular Child Protection training throughout their time at GIS.



## PROFESSIONAL LEARNING AT GIS

At GIS, we aim constantly to develop each child's potential. To achieve this, we invest heavily in all our staff so they feel valued and are provided with professional learning opportunities that will enable them to grow and develop professionally. We believe that ongoing professional learning is the basis for continued improvement in the quality of learning at GIS and is a central feature of our learning culture.



Teaching staff are provided with opportunities to further their professional careers through a wide range of professional learning opportunities both within the school and across the region through links with a variety of leading organisations, such as FOBISIA (Federation of British International Schools in Asia) and EARCOS (East Asia Regional Conference of Schools). Postgraduate study is encouraged and opportunities for leadership development are strongly supported.

In 2015 we increased the internal professional learning opportunities with the introduction of the Professional Learning Time programme. This initiative provides 2 hours per week of dedicated professional learning time to all academic staff. With 75 hours of internally dedicated professional learning time, GIS is now providing similar professional learning opportunities to the highest performing schools in the world.

## OUR STUDENTS AND THEIR FAMILIES

Our students are mainly from the expatriate community of Kuala Lumpur and come from over 60 different countries. The GIS roll currently comprises approximately 35% Malaysian students, the second largest nationality group is British. Parents are very supportive of their children's education and there is a thriving Parent Teacher Friends Association (PTF).

## LEARNING AT GIS

At GIS, we believe that effective learning is where the learner is engaged and motivated to explore and investigate, develop skills, knowledge and understanding and can apply these with a sense of purpose, progress and achievement in different contexts.

We are guided by our GIS Learning Statements:

### Effective learning will take place when:

- Learners understand what they are learning and why
- Knowledge, skills and understanding are being developed
- Learning is engaging, challenging and motivating
- Learners feel safe, supported and valued as part of a learning-centred environment
- Learners are engaged both independently and collaboratively
- Learners know how well they are doing and how to improve

## GIS LEARNER SKILLS

The GIS Learner Skills are a set of skills, qualities and competencies that we want to see in all of our students.

GIS students consistently achieve some of the best examination results in the world. While we take great pride in this, we believe that a complete education extends beyond numbers. We strive to nurture well-rounded

individuals who leave our school with skills, competencies and qualities that will allow them to succeed in the world as young adults and beyond. We call these our Learner Skills.



GIS students learn to think creatively and solve problems. They are encouraged to use their imaginations, and to analyse and take risks in the name of learning.



GIS students learn to work as a team, as well as effective and persuasive communication. They are developed as leaders, who are able to positively influence the people around them.



Mastery of body, mind and soul is essential in the development of a well-rounded learner. As well as leading active, healthy lifestyles, GIS students learn determination and control over their emotions.



GIS students are not mere absorbers. They question what they are taught and conduct their own research, analysing varying sources to come up with their own conclusions. They learn to evaluate themselves and find ways to improve, as well as organisational skills crucial for a balanced lifestyle.



GIS students care about learning, but they also care for the people around them. They learn respect and adhere to personal values, with a desire to make constructive changes. They are committed to their community and the world, gradually working towards acquiring the capabilities to make a positive impact.

## PROJECT ATHENA



Athena is a bespoke application that has been designed by staff and students of Garden International School. Currently in its trial phase, the programme allows students to upload and peer review evidence against the skills ladders. They build a professional portfolio that demonstrates the skills that they have developed but also a great deal of reflection and thought on the processes of the learning that has taken place. Not only is this a valuable and worthwhile life skill but it is also something we know that further education institutions and industry greatly value.

## THE CURRICULUM

The Primary School bases its standards on the English National Curriculum and through themes uses a skills based, enquiry approach that reflect and engage our international school culture. The Secondary School curriculum follows the English National Curriculum (including IGCSEs and A-Levels), modified to include a strong international flavour. In addition, Bahasa Malaysia (The National Language) and Islamic studies are provided for Malaysian and Muslim children respectively. Please also see our website for further details of the curriculum.

There is an emphasis on individual teaching throughout the school. The Student Vision drives much of the learning at GIS, this is underpinned by the more recently developed GIS Learner skills. Please do see our website and teacher portal (accessible from the website) for more information.

GIS places a high value in the effective use of technology to enhance learning both within and beyond the classroom. We have a well embedded 1:1 Apple hardware program from Years 3 - 11 and the school is equipped with a world class ICT infrastructure. Our software use revolves around the excellent Google Apps for Education suite along with a wide variety of third party apps and add ons. All classrooms are equipped with a Smart Projector or a Smart Board, along with an AppleTV. In 2016 we were recognised by Apple for excellence in innovation leadership and learning and received **Apple Distinguished School Status**, one of the few schools in the region to receive this award.

Continual professional development is in place to support teachers to transform the learning experiences for students

School's Wider Curriculum	
<ul style="list-style-type: none"> <li>• CCA Programmes</li> <li>• Jungle School Programme</li> <li>• Day Trips</li> <li>• Outdoor Education Camps</li> <li>• Free Flow</li> <li>• Apple Distinguished Programme - GIS Large Scale Enquiry</li> <li>• Singing Playground</li> <li>• Year Group Shows</li> <li>• Upper Primary School Production</li> <li>• Key Stage 3 Production</li> <li>• Secondary School Production</li> </ul>	<ul style="list-style-type: none"> <li>• Dragons Sport Programmes</li> <li>• Positive Education</li> <li>• Common Sense Media Digital Citizenship Curriculum</li> <li>• Student Leadership Programmes</li> <li>• Community Sports Leaders Award</li> <li>• The Duke of Edinburgh's International Award</li> <li>• Expedition Leader Award</li> <li>• Instrumental Music Programme (IMP)</li> </ul>



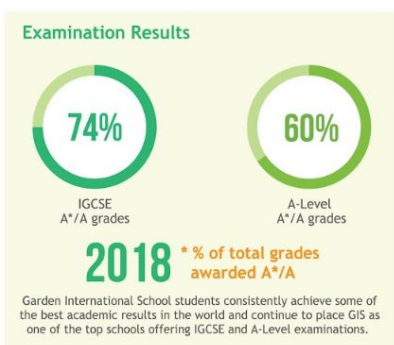
**Distinguished School**

using the technology available. Digital Learning Coaches are also employed across the school to support staff in implementing effective technology for learning.

## ACADEMIC RESULTS

Academic results throughout the school have been excellent for many years as illustrated in the table below. Further details can be gained via this [LINK](#) to the school website.

### BRINGING OUT THE BEST IN YOU



At Garden International, we use Standardised, Summative and Formative Assessment approaches to build part of the picture of learning and is a process by which **assessment** information is used by teachers to understand and personalise the support for every child in their care. We triangulate Aptitude, Attitude and Attainment data to help reduce the risk of the individual child falling through the nets of anonymity and becoming the very 'disappointed, disaffected and disappeared'. The data triangle enables Garden to personalise our support and intervention to ensure that we help students to not only reach but go beyond what they perceive their potential to be.

IGCSE results for the past 7 years are shown below.

	2011	2012	2013	2014	2015	2016	2017	2018
% A*-C Grades	97%	96%	96%	97%	97%	97%	96%	98.1%
% A* and A Grades	70%	69%	69%	76%	73%	73%	69%	73.6%

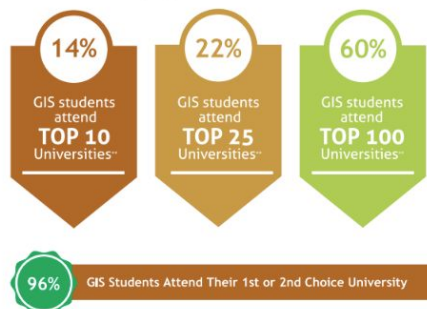
The Sixth Form at GIS has been in operation since 2001 and A-Level results are equally impressive.

	2011	2012	2013	2014	2015	2016	2017	2018
Overall Pass Rate	100%	100%	100%	100%	99.75%	98%	96%	100%
% A* to B Grades	82%	84%	82%	78%	81%	81%	85%	82.6%

GIS Sixth Form students have gone on to study at prestigious Universities including Harvard, Oxford, Cambridge, London, Durham, Nottingham, Warwick, Melbourne, and South Australia. We are very proud of our students and their achievements. All students are valued for the fine efforts they put into their work and their contributions to the GIS community.

### Universities Attended Worldwide

Our students gain admission to the best universities in the world. They make a difference to those around them, and are prepared to take on the challenges of life beyond formal education programmes.



## ENGLISH AS AN ADDITIONAL LANGUAGE

The school provides extensive support for students whose first language is not English. The school believes in providing for students with EAL needs within the mainstream classroom and a full team of EAL specialists teachers and Teaching Assistants work alongside classroom teachers to provide quality learning experiences for these students and enable them to access the curriculum.

## LEARNING SUPPORT

GIS has a Learning Support Department providing specific 'in-class' and withdrawn support for students who have special learning requirements. The school caters for students with a range of learning needs.

## CO-CURRICULAR ACTIVITIES

All staff are required to offer a minimum of one co-curricular activity (CCA) per week. This could be a vocational, academic or sporting programme. The school has an extensive range of CCAs, a list of which can be found on the website. The school also encourages Secondary students to participate in the Reach Out community engagement programme, Model United Nations and The International Award (formerly known as the Duke of Edinburgh Award).

The Primary School organises residential camps for students in Years 3, 4, 5 and 6 and the Secondary School organises Year camps for Years 7, 8, 9 and 10 and Student Leadership Camps. There is also a yearly 'Discovery Week' in which a whole range of international and national community service-based trips are organised for the whole secondary school. Community Service is a very large part of what we do at GIS, from teaching students from refugee centres to a weekly street feeding programme.



## WHAT HAPPENS ONCE YOU ARE APPOINTED

We are aware that transition from one job to another and one country to another can be a very stressful event. At GIS we try very hard to keep you fully informed and to support you through the transition period and beyond. Our extensive Induction Programme begins before your arrival in Malaysia and continues throughout your first year at GIS.

Upon appointment you will be contacted by the Director of Professional Learning and provided with an email buddy. A GIS Induction site provides you with a range of information about the school and moving to Malaysia. We also utilise other online platforms to provide you with opportunities to connect with other newly appointed teachers before you arrive if you choose.

The Heads of School, Deputy Heads of School, Director of Professional Learning, People & Culture Department (Human Resources), Assistant Heads and Heads of Faculty are all involved in the Induction Programme.

The Induction Programme has been highly praised by new staff and has been improved each year following feedback from participants.

Soon after a new teacher is appointed a People & Culture Department personnel will contact him or her for all the details required to process their Employment Pass. It is crucial that you provide all required documents in a timely manner to ensure employment pass is approved before you enter Malaysia. Various members of the academic staff will make contact, giving their e-mail addresses and will be able to answer any specific questions. We recommend that during the period before a new teacher leaves for Kuala Lumpur they read our [regular weekly newsletter](#) on the website. You can also follow us on #GISLearning.

A flight will be booked from the nearest home airport to Kuala Lumpur. The departure dates will be given as soon as possible (teachers are given options of dates for arrival). Teachers' contracts commence in early-mid August (exact date to be advised) and new staff will be required to travel to Malaysia in early August for Induction and to allow enough time for the processing of Employment Passes. Air tickets will be sent via e-mail approximately two or three weeks before departure. There will probably be several teachers on the same flight and this provides an opportunity to get to know others before arrival in KL.

Newly arrived teachers will be met at the airport and taken to hotel accommodation, which the school provides for the first two weeks in Malaysia. A school email address will be provided for you prior to your arrival. The two-week induction period (exact dates to be advised) includes an introduction to the school, an introduction to Malaysia, introduction to housing agents, advice on finding accommodation and the opening of bank accounts. A crèche is provided for accompanying children during the induction period.



## LIVING IN MALAYSIA

### MALAYSIA, TRULY ASIA

You have probably seen or heard this slogan and to be honest even though being in the school is a little like being on an island, once you go out of the school gates those words really do have meaning.

For those who like travel, Kuala Lumpur acts as a gateway to destinations all over South East Asia and beyond. Being a base for Air Asia (modelled on Europe's Ryanair) fares to many cities in the region are relatively inexpensive. Good deals can also be obtained for those interested in travelling with full service airlines within Malaysia and further field. And for travel within Malaysia there are excellent bus services to Singapore (luxury coach from RM70) to complement the train links north and south from KL.

For those who like watersports Malaysia is an excellent location. Many staff first learn to dive whilst working at GIS and some come to Malaysia because they wish to take advantage of the opportunities of the crystal clear water off Malaysia's coast allowing for some spectacular diving opportunities. Some of the islands around Malaysia provide excellent diving locations, but there are also attractions for those who require more sedentary activities: Langkawi is known for its duty free status and Penang for its funicular railway amongst other attractions but they both have extensive beaches. Just three hours away from Kuala Lumpur on the East Coast is the small town of Kuantan. Swimming in the South China Sea can feel as though you are in a warm bath. You can even climb a mountain or view orang-utans in Borneo. It is no exaggeration to say that whatever your interests you can indulge them in Malaysia.

But Malaysia is not just beaches and holidays. In between other activities there is also eating. Malaysians love their food. It is in the food and restaurants that 'truly Asia' comes through. There is an amazing variety of food available, which reflects on the different backgrounds and ethnic groups of the population. These range from the local stalls where a meal can be had for just a few Ringgit to restaurants catering for Western and Asian food. Whatever you want to eat it is usually possible to find in KL - and for those coming from the UK the price of meals out is considerably less than you will be used to paying back home. A word of caution, however, the cost of wine can be relatively expensive if you want good quality.

Living in KL is a very pleasant experience. New staff are often amazed at how inexpensive supplies and services are especially when compared to Europe - though there are times when it is necessary to remember that Malaysia is a developing country. Despite this it is still no more difficult to get broadband internet connections installed than in the UK. Astro Satellite Television provides a range of channels from CNN and BBC World to the latest sports and movies.

KL has a large number of cinemas showing the latest releases (though one has to be aware that the censor's cuts are rather more radical than in the West) along with clubs and pubs in most suburbs.

Malaysia is truly a shopper's paradise with prices for electrical and photographic items being very good. There are shops everywhere and opening hours tend to be 10 to 10 for seven days a week in the main shopping centres which contain a good mix of local and international (such as IKEA, Tesco, Marks and Spencer, Harvey Norman) shops.

Supermarkets have an abundant range of goods ranging from fine Australian Cheeses to local fruits and vegetables. Even Marmite for the British and Vegemite for the Australians is easy to find. The more adventurous might look in the local markets where even more exotic fruits and vegetables can be found at very reasonable prices.

Like any big city with a significant expatriate population there are many clubs and organisations, which bring locals and expats together. For those who like sport there are opportunities to indulge in almost any activity from golf to soccer to cricket and rugby.

So whereas teaching at GIS brings you the World, living in KL brings you Asia.

*Malaysia, truly Asia.*

## **GEOGRAPHY & CLIMATE**

Malaysia consists of two regions, which are separated by the South China Sea: Peninsular Malaysia and East Malaysia (Sabah and Sarawak on the island of Borneo). The former is divided into 11 states and 2 federal territories.

The climate in Malaysia is pleasant all year round (29°C - 34°C) although there is a relatively high level of humidity. There is little difference in temperature throughout the year and there are no distinct seasons except for the wet season, which runs from October to January. Lightweight clothing is adequate throughout day and night unless you visit the surrounding hill resorts where it is cooler. A four-hour drive south will take you to Singapore and a four-hour drive north will take you to Penang. Most buildings, including all rooms in the school, are air-conditioned.

## **COST OF LIVING**

According to the latest Cost of Living Survey from Mercer, Kuala Lumpur is in **165th** position in the list of the most expensive cities in the world.

The survey covers 209 cities across six continents and measures the comparative cost of over 200 items in each location, including housing, transport, food, clothing, household goods and entertainment.

## **SETTING UP COSTS**

Every person who moves from one city to another finds that they part with a lot of money during their first few months. Moving to Kuala Lumpur is no exception. It is strongly advised to bring some private funds to help you through this period. Teachers coming from the UK recommend that single applicants bring with them about £3,000 and married couples about £4,000.

Traveller's cheques are convertible in some banks, whereas a bank draft can only be accessed once you have opened a bank account (this can take a few days). The setting up allowance paid by the school is normally used up in paying the respective refundable housing and utility deposits. The bulk of costs incurred during the first few months are in the form of these deposits - the deposit for most types of accommodation is two months rental and an additional one month rent paid in advance i.e. the cost of moving in, is equivalent to three months rent! It is best if the landlord can have a fixed line telephone connected - however, most expatriates end up having to apply for their own phone and this can incur another refundable deposit to Telekom of approximately RM1000 if you want IDD



(International Direct Dialling). An alternative used by many teachers is to use a pre-paid mobile phone card - purchase price approximately RM60, which can be topped up when necessary. (Phone calls from Malaysia are much cheaper than from UK or Australia and often mobile overseas calls are cheaper than using a fixed line). The last deposit is a utilities deposit (covering electricity water and gas) which is paid to your landlord. This varies according to your landlord but can be as high as RM1000. Other start up costs will include purchase of household items and this amount will depend upon the type of accommodation you seek i.e. furnished / unfurnished.

### INTEREST FREE SETTING UP LOAN

The school offers new staff an interest free loan of 10 - 12,000RM. This is primarily used by staff to cover deposits on accommodation and the first month in advance. This should be applied before arrival in KL and it will be transferred to your newly opened local bank account during induction (normally the second week of induction). The loan of Ringgit Malaysia ten thousand or twelve thousand is repaid at a monthly rate commencing from the first pay date.

### ACCOMMODATION

The school will provide hotel accommodation up to 14 nights for newly arrived teachers. The school should be informed at least two weeks before arrival if a teacher does not wish to utilise the hotel accommodation.

The School provides an accommodation allowance of RM3,000 per month for single teachers, RM3,200 per month for married teacher with no children whose spouse is not working, RM2,750 per month each for married teachers, both of whom are employed by the School and RM4,000 per month for married teachers with children whose spouse is not working in the School. This allowance is paid as part of the salary and is taxable. The allowances are sufficient for renting good quality accommodation but may need supplementing according to the location you elect to live in.

The four types of accommodation available in KL are: Condominiums (most preferred by expatriates because they are modern and usually have swimming pool and gym and tennis facilities), link houses (modern terrace), bungalows (usually the most expensive) and semi-detached bungalows. Condominiums are plentiful around the area of the school and most teachers tend to stay in condominiums that are within a ten-minute taxi ride from school. Many teachers choose to live alone, but for those who choose to share, the overall cost becomes considerably cheaper and allows them to spend the extra money on additional entertainment and travel. Condominiums start at around RM3,000 per month for furnished accommodation. The definition of 'furnished' varies. An average furnished Condominium (3 bedroom, 2 bathroom) consists of beds, no linen, wardrobes, table and chairs, living and dining room furniture, TV/Stereo (if lucky), refrigerator, gas oven and microwave, washing machine, curtains, fans, air-conditioners and a few other items. Sometimes cookware, cutlery, crockery, kettle, toaster etc are provided, but this is the exception rather than the rule. Link homes can be found in a similar price range, but living tends not to be so private and for some reason neighbours often have dogs that want to bark all night! The school assists newly arrived teachers to locate suitable housing areas and find accommodation by introducing them to housing agents and Condominium management companies. Agents take a fee from the landlord and there is no charge to the tenant.

## PRICES

Living in KL is as expensive or as cheap as you want to make it. The selection of Western and Asian foodstuffs and other household items is plentiful. You can buy almost everything here that you can back home. There are lots of supermarkets and outdoor markets from which to buy fresh produce. Fruit is abundant all year round and is relatively cheap. Local food is very reasonably priced and one of the pleasures of being in Malaysia is to frequent the enormous number of restaurants and food stalls. Alcohol is relatively expensive, i.e. beer RM7.00 per can, wine RM55.00+ per bottle. Please refer to the shopping guide below. The cost of petrol is subsidised by the government and is therefore cheap (RM1.95 per litre). Cars are relatively expensive, but their resale value is generally good, even after 2 years you may get back almost what you paid. Cheap second hand cars can be found for RM10,000 to RM15,000. New cars start from RM35,000. The very popular Perodua Myvi will cost approximately RM44,000 and have excellent resale value. \*The deposit on a new mid-range family Proton car is approximately RM7,500.

Labour is cheap for car servicing, as are parts for Malaysian made cars, foreign car parts can be expensive. A number of newly arrived teachers arrange to buy cars from departing teachers, others do opt for new cars. Driving in KL is not difficult. It is recommended that an international driving licence is obtained before driving in Malaysia.

## SHOPPING GUIDE

The following data is based on 3959 entries from 446 different contributors and provides a snapshot of costs. \*obtained from <https://www.numbeo.com/cost-of-living/in/Kuala-Lumpur>

### Transportation

[ Edit ]

One-way Ticket (Local Transport)	3.00 RM	2.30	3.50
Monthly Pass (Regular Price)	125.00 RM	100.00	150.00
Taxi Start (Normal Tariff)	3.00 RM	3.00	4.00
Taxi 1km (Normal Tariff)	1.55 RM	1.00	3.00
Taxi 1hour Waiting (Normal Tariff)	25.00 RM	15.00	30.00
Gasoline (1 liter)	2.19 RM	1.95	2.36
Volkswagen Golf 1.4 90 KW Trendline (Or Equivalent New Car)	149,000.00 RM	95,000.00	160,000.00
Toyota Corolla 1.6l 97kW Comfort (Or Equivalent New Car)	120,472.38 RM	95,000.00	145,000.00

### Utilities (Monthly)

[ Edit ]

Basic (Electricity, Heating, Cooling, Water, Garbage) for 85m2 Apartment	209.77 RM	100.00	300.00
1 min. of Prepaid Mobile Tariff Local (No Discounts or Plans)	0.25 RM	0.12	0.45
Internet (60 Mbps or More, Unlimited Data, Cable/ADSL)	169.27 RM	140.00	210.00

<b>Restaurants</b>		[ Edit ]	Range
Meal, Inexpensive Restaurant	15.00 RM	10.00	19.00
Meal for 2 People, Mid-range Restaurant, Three-course	70.00 RM	50.00	100.00
McMeal at McDonalds (or Equivalent Combo Meal)	13.00 RM	10.70	15.95
Domestic Beer (0.5 liter draught)	15.00 RM	10.00	20.00
Imported Beer (0.33 liter bottle)	18.00 RM	12.00	25.00
Cappuccino (regular)	10.69 RM	8.00	13.00
Coke/Pepsi (0.33 liter bottle)	2.47 RM	1.87	3.00
Water (0.33 liter bottle)	1.40 RM	1.00	2.00
<b>Markets</b>		[ Edit ]	
Milk (regular), (1 liter)	7.19 RM	6.00	8.50
Loaf of Fresh White Bread (500g)	3.30 RM	2.50	4.00
Rice (white), (1kg)	5.24 RM	3.00	8.00
Eggs (regular) (12)	5.55 RM	4.20	7.00
Local Cheese (1kg)	66.10 RM	35.00	100.00
Chicken Breasts (Boneless, Skinless), (1kg)	12.48 RM	10.00	17.60
Beef Round (1kg) (or Equivalent Back Leg Red Meat)	29.31 RM	21.60	40.00
Apples (1kg)	9.29 RM	7.50	12.00
Banana (1kg)	6.06 RM	4.00	9.00
Oranges (1kg)	8.49 RM	5.00	12.00
Tomato (1kg)	4.31 RM	3.00	7.00
Potato (1kg)	3.99 RM	2.00	8.82
Onion (1kg)	3.58 RM	2.00	7.00
Lettuce (1 head)	4.17 RM	3.00	5.00
Water (1.5 liter bottle)	2.45 RM	2.00	3.50
Bottle of Wine (Mid-Range)	60.00 RM	45.00	80.00
Domestic Beer (0.5 liter bottle)	12.39 RM	8.00	19.00
Imported Beer (0.33 liter bottle)	12.38 RM	8.00	18.00
Pack of Cigarettes (Marlboro)	17.00 RM	17.00	18.00
<b>Sports And Leisure</b>		[ Edit ]	
Fitness Club, Monthly Fee for 1 Adult	169.87 RM	120.00	230.00
Tennis Court Rent (1 Hour on Weekend)	24.44 RM	15.00	40.00
Cinema, International Release, 1 Seat	15.00 RM	15.00	18.00
<b>Childcare</b>		[ Edit ]	
Preschool (or Kindergarten), Private, Monthly for 1 Child	810.71 RM	380.00	1,200.00
International Primary School, Yearly for 1 Child	25,706.67 RM	15,600.00	50,000.00
<b>Clothing And Shoes</b>		[ Edit ]	
1 Pair of Jeans (Levis 501 Or Similar)	249.42 RM	150.00	350.00
1 Summer Dress in a Chain Store (Zara, H&M, ...)	141.72 RM	80.00	200.00
1 Pair of Nike Running Shoes (Mid-Range)	288.82 RM	200.00	350.00
1 Pair of Men Leather Business Shoes	294.62 RM	200.00	400.00
<b>Rent Per Month</b>		[ Edit ]	
Apartment (1 bedroom) in City Centre	2,329.94 RM	1,500.00	3,000.00
Apartment (1 bedroom) Outside of Centre	1,370.21 RM	800.00	2,000.00
Apartment (3 bedrooms) in City Centre	4,338.97 RM	2,600.00	6,500.00
Apartment (3 bedrooms) Outside of Centre	2,161.45 RM	1,500.00	3,000.00
<b>Buy Apartment Price</b>		[ Edit ]	
Price per Square Meter to Buy Apartment in City Centre	10,967.94 RM	5,381.96	15,000.00
Price per Square Meter to Buy Apartment Outside of Centre	6,131.08 RM	3,767.37	8,000.00
<b>Salaries And Financing</b>		[ Edit ]	
Average Monthly Net Salary (After Tax)	4,314.85 RM		
Mortgage Interest Rate in Percentages (%), Yearly	4.51	4.00	5.00

*Disclaimer Note: The prices may vary from places and from the date given.*

Chicken, pork, fish, fresh fruit and vegetables are readily available and relatively inexpensive at the wet markets and other local stores. Supermarkets, such as Tesco, are also available - see <http://www.tesco.com.my/> for further price comparisons. Imported goods are available at the supermarkets but are more expensive. Local food is plentiful and much cheaper than Western food as the latter incurs import tax. The above prices would vary depending on the brand of product and can be found very cheaply in 'local' areas. Malaysians eat out much more than in the United

Kingdom, and there is a huge variety of restaurants and the cost of eating out is very cheap compared to the United Kingdom.

### **BANKING**

Salaries are automatically paid into each teacher's bank account at the end of every month, (usually on the 28<sup>th</sup> day of the month). During induction, the School will assist newly appointed teachers to open an account with a local branch of HSBC. Other options are available should staff prefer.

### **TRANSPORT**

Many GIS teachers do not own cars and rely on public transport and taxis to move around the city. Taxis are very cheap in comparison to the UK and Australia. A 10 km taxi ride costs approximately RM13.00. Many teachers living in the same condominium or near to each other share a regular taxi to school each day. There is a good interconnecting system of rail, light rail and monorail services around the city and a newly constructed express train runs from Central Station to KL International Airport. Main trains travel South to Singapore and North to Ipoh, Penang and Thailand. Bus travel within the city is a little erratic, but long distance bus services provide good and incredibly cheap connections to other parts of Malaysia and Singapore.

## CONTRACTS AND BENEFITS

### SALARY AND CONTRACTS

Teachers are offered two-year contracts and paid monthly (end of the month) in Malaysian Ringgit. New members of staff are placed on a salary scale according to their qualifications and experience. All teachers (local and overseas recruited) are paid a basic salary (in Ringgit) according to qualifications and years of post PGCE/B Ed experience. Income tax is deducted at source. Funds are easily transferable in and out of Malaysia.

In real terms, our UK teachers, as long as they do not have to remit significant sums of money back to the UK on a regular basis, are better off here in many ways. If you spend locally and travel within Asia, you will do very well on the salary and benefit package we are offering.

- Garden International School recognises a maximum of 6 years teaching experience on joining the school. An annual increment is paid at the beginning of the new academic year with the School for staff joining below Point 6. A system of threshold payments will be introduced for staff joining at Point 6.
- Responsibility Allowance ranges from RM870 to RM10,000 per month depending on the level of responsibility.

### SUPERANNUATION

Teachers are entitled to contribute to the Malaysian Government's Employees Provident Fund (EPF). If a teacher opts to do this (currently 100% of teaching staff take this option) the teacher contributes a minimum of 11% of gross salary to the fund which is matched by an additional 12% contribution from the School. At the end of employment in Malaysia this money is refunded to the teacher as a lump sum. Each year a very good rate of interest is added to the sum invested in the scheme. It is a very effective way of saving.

Teachers from the UK can find information regarding the Teacher Pension Scheme by following the link - <https://www.teacherspensions.co.uk/members/your-scheme/starting-out.aspx>. Similarly teachers coming from Australia should contact their State Pensions Department to gain further information regarding pension contributions.

### UK NATIONAL INSURANCE

Contributions may be continued in Malaysia. Leaflet NI 38 "National Insurance Contributions for People Living Abroad", or its current equivalent is a useful document to consult <https://www.gov.uk/government/publications/social-security-abroad-ni38>. Some expatriates pay Class Three Contributions to maintain full entitlement to the UK State Pension and certain other rights.

### HEALTH CARE

Health care in Malaysia is as good as, if not better than, that found in the UK or Australia. Malaysia has become a centre for Health and Medical Tourism. There are excellent specialist clinics and hospitals in KL. Global Doctors Medical Centre recently opened and is located directly adjacent to the School <http://globaldoctorshospital.com>. Health care is also much cheaper than in the UK or



Australia. A trip to a general practitioner for a common cold costs about RM60 to RM80 (including medicine) or a little more expensive if antibiotic drugs are prescribed.

Teachers are covered under the Group International Medical Insurance Scheme (AXA), and will be covered to an annual maximum of MYR1,000,000 within Asia. The Hospitalisation insurance also covers the dependants of teacher. Teachers have the option to upgrade their medical coverage to International Exclusive Plus, the difference in premium costs to be borne by the teacher.

**All staff are strongly advised to have Hepatitis A & B injections before coming to Malaysia.** Precautions against Malaria are not necessary unless a lot of jungle trekking is on the agenda. Most pharmaceutical items are available and optical supplies are plentiful. The Malaysian Ministry of Education require all applicants to obtain a letter from their GP to say that he or she is fit for teaching. The cost of this is borne by the school up to a maximum of £50 if the candidate is offered a position. A full medical examination is not necessary.

### **BAGGAGE ALLOWANCE**

The baggage allowance is designed to cover both personal items and any personal teaching resources. If a newly appointed teacher is specifically asked to bring teaching resources with the intention of them being the property of the School, he /she may do so (within reason) but **a letter of request from the respective Head of School must first be obtained.** A separate receipt for this additional freight charge must be provided. It is strongly advised that the services of a reputable door-to-door international freight company are used to avoid numerous hassles and agent costs when unaccompanied baggage arrives in Malaysia. If a door-to-door service is not used a payment in excess of RM400 may be demanded to clear the goods through Malaysian Customs. Be forewarned that pre-recorded video tapes and DVDs are subject to customs clearance. Electrical goods are also meant to be declared and are subject to a special duty - but again a good freight agent will get personal goods into Malaysia without difficulty.

When entering the country it is not advisable to bring plant matter. Drugs are absolutely out of the question - the offence carries a mandatory death penalty. It is always advisable to smile politely as you pass through the 'Nothing to Declare' Green Channel at the airport.

### **MARITAL STATUS**

Marital status must be declared at interview. It is relatively easy for the non-working spouse to obtain a dependant's pass.

## OTHER ITEMS OF INTEREST

### IMMIGRATION

Malaysia is one of the few countries where work permits are stamped in passports after a teacher has arrived in the country. There is no standard fast track system to have a passport endorsed before arrival in Malaysia. When teachers arrive at Kuala Lumpur International Airport (KLIA) their Malaysian Customs and Immigration declaration card must show that the purpose of the visit to Malaysia is marked as “**Holiday**”, which entitles the holder to a two or three month pass. Once newly appointed teachers are in the country the School will take their passports to The Immigration Department and have an Employment Pass issued. While this sounds like a crude and somewhat ‘dishonest’ method, every expatriate worker in Malaysia has to go through the procedure. The People & Culture Department will keep you updated with the Immigration requirement before your arrival to Malaysia.

Passports must be valid for at least **two** years before arriving in Malaysia and has **six consecutive** blank pages for endorsement of employment pass. Children must be travelling on their own passport.

### DOCUMENTS TO BRING/SEND

Make sure any outstanding documents asked for by the school are sent as soon as possible. Certified photocopies may be sent in advance but the original documents must be brought to Malaysia to be verified by the School. In order to process employment passes, it is absolutely necessary that all newly appointed teachers provide written proof that they have a minimum of two years teaching experience, that they have approved teaching qualifications and evidence of university qualifications. The cost of sending these documents by registered courier is borne by the teacher.

### CRIMINAL RECORD CHECK/ENHANCED DBS CHECK

Garden International School is committed to safeguarding and promoting the welfare of children and young people and expects all staff and volunteers to share this commitment. As such, all offers of employment are subject to a criminal record check (DBS or equivalent).

### DRESS CODE

It is always summer in Malaysia! It can however, be chilly in the School’s air-conditioning. Malaysia being a predominantly Islamic community, a sensible degree of modesty in dress is expected (example: shoulders should be covered). Most female teachers wear lighter versions of the smart business wear that you would wear in a temperate climate. Male teachers are expected to wear long trousers, a business shirt and tie. Around town just about anything goes but one should always be aware of cultural sensitivity.

### SAFETY AND SECURITY

Malaysia is one of the safest and most secure countries within S.E.Asia. However, the School has a very well developed security plan and crisis management plan. Close liaison with Malaysian, British, Australian and United States security advisors is maintained at all times. The School also employs an independent security company to carry out regular security audits. A team of full time security guards is employed by the school and a range of security precautions, including an extensive CCTV

system, are in place. It is compulsory for staff to wear identity badges whilst on the School campus. These are supplied on arrival.

Malaysia is relatively crime free, but as in all major cities one has to be aware of petty street crime in particular female staff are encouraged not to carry handbags in public places.

### **ELECTRICITY & TELEVISION**

The power supply in Malaysia is 230V and the plug sockets are standard British 3 pin type. Astro Satellite TV is readily available throughout Malaysia and in comparison to most countries is relatively cheap to subscribe to. A wide range of packages are available some specifically designed for expatriates, BBC World, CNN, CBS, Star, National Geographic, Discovery, Discovery Travel, cartoon and children's channels, movie channels as well as a wide range of sporting channels showing live coverage of all Premiership football matches, Grand Slam Tennis and golf.

### **INTERNET ACCESS & COMPUTERS**

All staff have a school email account. Most teachers have dial up or broadband connections in their homes. Malaysia is technically advanced in the field of IT and computers, laptops and peripherals are readily available at excellent prices. All staff are provided with a macbook for loan whilst employed at the school. Secondary school teachers and Primary teachers of Years 3-6 are provided with an iPad for school use.

### **INCOME TAX**

Teacher's salaries are taxed at source in Malaysia. The tax rate is on a graduated scale and is generally lower than in the UK and Australia, with a maximum rate of about 28%. The School's People & Culture Department will organise all tax payments and will provide more detailed advice on tax issues as part of the induction programme.

Teachers leaving employment in the UK in August and joining GIS in September are eligible for a tax rebate from the UK Inland Revenue. The following is our understanding of the tax situation with regard to British expatriates living in Malaysia. Please note however, that we cannot be held liable if the following interpretation is proven to be inaccurate.

Before coming to Malaysia the teacher should obtain the status of being non-resident for taxation purposes. Local UK tax offices will be able to provide assistance with this. With this established there will be no tax liability on earnings derived outside of the UK provided the teacher remains resident outside of the UK for at least one complete tax year, There are certain limits on the number of days that can be spent in the UK each year in order to retain the non-resident status. Many high street banks can give you advice on this issue. A similar situation exists for Australian teachers.

Housing allowances are taxed. Flights are also taxed as a benefit in kind, however tax relief is offered up to RM 3,000 for each member of staff on flights per annum.



## MALAYSIAN INCOME TAX

For income tax purposes, there are only 2 types of residence status, namely 'resident' or 'non-resident'. The distinction between these 2 types of residence status is imperative because if a person is a resident, any income received in or remitted to Malaysia is taxable at scale rates (which is dependant on your income), whereas a non-resident is liable to Malaysian income tax only on income received from a Malaysia source at a flat rate of 28% (effective year of assessment 2016).

An individual is considered as a resident in Malaysia for the basis year for a particular year of assessment if he is in Malaysia in that basis year for a period or periods amounting in all to 182 days or more.

To qualify as tax resident for income earned in 2019, teachers who join GIS in August 2019:

- 1 MUST BE in Malaysia on 31 December 2019 and 1 January 2020 (2 days);
- 2 DO NOT TRAVEL out of Malaysia for more than 14 days for social visits between 1 January 2020 to 30 June 2020. If you need to travel, you need to make up for these days to meet the 182 days rule.

Teachers are therefore advised to travel domestically from 1 January 2020 until the People & Culture department submits your tax refund application, which will be in early July 2020.

As required by Inland Revenue Board of Malaysia, the monthly deduction applicable to an employee who is not resident or not known to be resident in Malaysia shall be at a rate of 28% of his remuneration. Therefore for the months of August 2019 to December 2019, you will be taxed at 28%. However, once you qualify as a tax resident for year 2019 in July 2020, the School will assist you in applying for your tax refund. This will be explained in further detail during induction.

By January 2020, monthly tax deduction will follow the Schedule Monthly Deduction from the Inland Revenue Board, Malaysia. This deduction is an estimate and teachers are advised to set aside some money to pay the difference in the actual tax payable.

Please note:

- 1 The School does not pay interview expenses for teaching posts.
- 2 All other expenses incurred in applying for this position will be met by applicant unless stipulated by the School.
- 3 The School will reimburse successful applicants up to £50 for costs towards obtaining a letter from their doctor certifying that they are fit to work. It does not need to be a full medical. The original receipt must be furnished.