



**TEWKESBURY SCHOOL**  
EXPECTING AND ACHIEVING SUCCESS

# Tewkesbury School

## Information Pack



# Teacher of Design & Technology

Specialising in Engineering and Resistant Materials

# Welcome Letter

Dear Applicant

Thank you for expressing an interest in our Teacher of Design & Technology position. The successful candidate will be joining the Technology Department at a critical and exciting time. Design & Technology is undergoing a £1.3m refurbishment to develop a state of the art teaching environment with a wide range of equipment including new engineering equipment, CAD, 3D printing and programming facilities. Students will begin working in the new space in May 2018. The successful candidate, as part of the current dedicated and established team, will help develop the faculty to embrace new technologies and improve outcomes for students. We will be introducing new schemes of work and investigating some of the latest innovation in Design Technology Education.

Engineering is a strength of Tewkesbury School and has seen much success in the past, with high quality teaching leading to excellent examination results. We pride ourselves on our wide range of links with many local engineering companies actively supporting us, which have helped Tewkesbury School become a leading centre for Engineering across Gloucestershire. Many of our students go on to further education, apprenticeships and successful careers in the sector.

You will be joining a team of experienced teaching staff and two technicians. The Department currently offers a range of disciplines at KS3 (including engineering from Y7) and offers Engineering, Food, Textiles and Smart Materials at KS4. We currently offer Textiles and have a large Engineering cohort at KS5. The successful candidate would be expected to take an active role across the whole department and will work as part of team. With the support of the Head of Faculty, you will play a pivotal role in the planning and delivery of Engineering.

Tewkesbury School is a popular and rapidly improving 11-18 comprehensive academy in Gloucestershire with around 1,400 pupils including 250 in the Sixth Form. The school is well placed at Junction 9 of the M5 and close to the Cotswolds, the Malvern Hills and the historic towns of Gloucester, Worcester and Cheltenham. Interested parties are invited to refer to our February 2016 Ofsted Report for further details and to the school's [website](#) which provides a clear flavour of our vision, educational philosophy and enrichment opportunities.

If you would like to play a key role in the next stage of our school improvement journey, whilst benefiting from an outstanding personal professional development opportunity, then your application would be warmly received.

Gary Watson  
Headteacher

## The timetable for this process is:

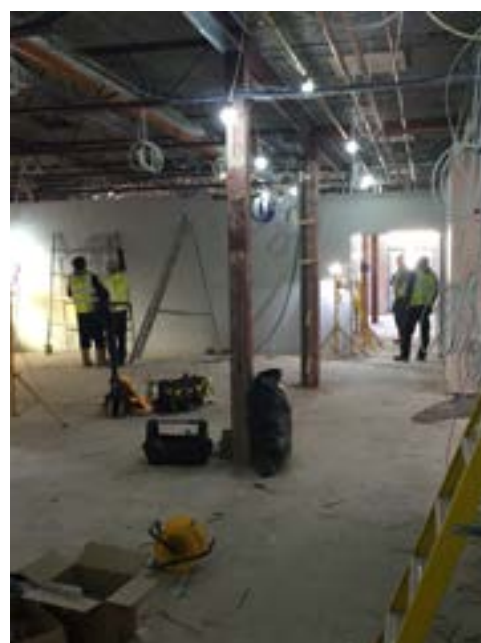
Tuesday, 13 March 2018  
Thursday, 22 March 2018  
Monday 26 March 2018

Advertisement posted in TES and Tewkesbury School [website](#)  
Closing date for applications (12 noon). Shortlisting begins  
Interview process

Applications should be completed online.

We welcome visits from potential applicants and this can be organised via Julie Bridge, HR Manager, Tewkesbury School, Ashchurch Road, Tewkesbury, Gloucestershire, GL20 8DF, (Email) [julie.bridge@tewkesburyschool.org](mailto:julie.bridge@tewkesburyschool.org) (Telephone) 01684 851814





# Job Description

## Teacher of Design & Technology

<b>Grade:</b>	Teacher Main Scale
<b>Responsible to:</b>	Headteacher in all matters. Head of Technology with respect to teaching, timetabled activities and curriculum development. Head of House with respect to pastoral matters and the work of the form tutor.
<b>Purpose of Job:</b>	To teach students within the school and to carry out such duties as are reasonably assigned by the Headteacher, including that of being a form tutor.

### Employment Duties

- To inspire children with an enthusiasm for the subject and a love of learning.
- To actively promote an ethos of care and guidance and show commitment to safeguarding and promoting the welfare of children and young people.
- To plan, teach, mark, assess work in accordance with school and departmental policy, following the National Curriculum/examination syllabi/ and Departmental schemes of work as appropriate.
- To contribute to the production of schemes of work, the development of teaching materials and resources and to the development of faculty policy, as a member of the faculty team.
- To ensure all pupils work is assessed on a regular basis and to keep accurate records of individual progress.
- To ensure that all reports, profiles and reference on pupils are produced when required.
- To set and mark homework regularly according to school policy.
- To attend departmental meetings as requested by the Head of Technology
- To control and oversee the use and storage of books, stationery and other teaching materials related to their teaching, and observing any Health and Safety Regulations.
- To liaise with support teachers, classroom assistants and other staff where appropriate.
- To be responsible for high standards of work and behaviour and initial disciplinary sanctions.
- To keep up to date with current developments in the subject area and to attend relevant in-service training both within and without the school.
- To adhere to all the school's policies including equal opportunities and health and safety.
- To undertake responsibility for specific areas within the department as agreed with the Head of Technology.

### Additional Duties

- To be a Form Tutor and to carry out the duties as specified in the Job Description of a Form Tutor.
- To carry out agreed and reasonable supervisory duties as detailed by the Senior Management.
- To participate in meetings with colleagues and parents' relative to the post.

## Our Vision

Young people will leave Tewkesbury School as confident individuals, successful learners and responsible citizens having experienced academic success in a happy, caring and stimulating environment.

Through our core values, all students will be empowered to meet the challenges of work and life in a rapidly changing global environment.

## Our Core Values

### Aspiration

**Aim high and believe in yourself**

### Challenge

**Strive to be the best you can be**

### Excellence

**Celebrate your achievements and be proud of your efforts**

### Values

**Conduct yourself appropriately and show respect at all times**

### Community

**Care for your community, your environment and the people around you**



Ashchurch Road, Tewkesbury  
Gloucestershire, GL20 8DF

Reception: 01684 292152

Email: [Julie.bridge@tewkesburyschool.org](mailto:Julie.bridge@tewkesburyschool.org)

Website: [www.tewkesburyschool.org](http://www.tewkesburyschool.org)

Headteacher: Mr G M Watson BSc PGDip NPQH



[follow@tewkschool](https://twitter.com/follow@tewkschool)

Tewkesbury School is a company limited by guarantee  
Registered in England and Wales under company number: 7840060