



Tudor Grange Academy
Solihull

Teacher of Mathematics

Applicant Information Pack



Dear Applicant

Thank you for the interest you have shown in Tudor Grange Academy, Solihull. We are very proud of our Academy and I personally regard it as a privilege to serve our community as its Principal.

Tudor Grange Academy Solihull has once again achieved great success with another set of hugely impressive exam results. We are delighted that the efforts of students and staff have been rewarded with such high grades across the range of subjects. Schools are now judged on a wider range of GCSE outcomes and Tudor Grange continues to achieve excellence across the board.

The students have worked tirelessly, supported by their families and a dedicated and highly skilled team of staff. We have seen outstanding grades, especially in English and Maths, EBacc and the new measures of Progress 8 and Attainment 8. The government have redefined success for schools and our students have really delivered.

As an Academy we have a strong commitment to traditional values and a focus on continuous improvement and development. Our ambition is to deliver a world class education and allow our students to become highly successful and qualified people, with a strong sense of moral purpose. We make no apology for placing a high priority on excellent behaviour, attendance, uniform and the highest possible standards as an expected norm. In addition to our students' successes, we were selected as one of the first hundred teaching schools which goes from strength to strength and enables us to be on the cutting edge of developments in teaching and learning. Our status as a National Support School further allows us to develop education nationally.

We really do believe that we offer a high quality education experience to every child who chooses to attend the Academy. We care about our students' development and achievements and we endeavour to provide first class support and every opportunity for our students to thrive. We have a plethora of enrichment and extra-curricular activities which grow every year in popularity thanks to the level of dedication from staff and the sheer enthusiasm of our young people. Tudor Grange Academy, Solihull is definitely an Academy where students enjoy themselves, work hard and receive great encouragement and success.



It is a fantastic time to join the staff at Tudor Grange for we are at the forefront of educational reform and pro-actively play a huge role in an improving school-led educational system. I wish you every success in your application and my colleagues and I look forward to meeting the successful shortlisted candidates

Yours sincerely

A handwritten signature in black ink, consisting of several loops and a long horizontal stroke at the bottom.

Mr D Turner MA Ed
Principal

ADVERTISEMENT

Teacher of Mathematics

Closing Date: 7th February 2018

Start date: 01/09/2018

Salary: MPS/ UPS

Suitable for NQTs: Yes

Contract type: Full Time

Contract term: Permanent

Our staff are our most valued asset. As a National Teaching School ALL our staff have access to a wealth of support provided by outstanding practitioners.

The Role

For September 2018 we require a talented, enthusiastic and outstanding teacher of mathematics. The mathematics department is dynamic, forward looking and ambitious; setting themselves high targets for development and achievement for the forthcoming years, within a very supportive and reflective atmosphere. Our GCSE results have been consistently outstanding for many years and we have continued this success with the A-Level results of our sixth form.

Additionally, you will benefit from:

- Developing your skills in one of the best schools in the country
- Working in a subject area where 92.6% of students achieved a 4+, 78.1% achieved a 5+ and 37.6% achieved a 7+ at GCSE in 2017
- In Mathematics 42% of our A level students achieved A*-A and 52% achieved A*-B in 2017
- In Further Mathematics 69% of our A level students achieved A*-A and 85% achieved A*-B in 2017
- Working in a forward-looking subject area with excellent resources.

The Academy

Tudor Grange Academy is a designated National Teaching School which means all our staff have access to excellent opportunities to flourish, develop and facilitate courses for other professionals. Tudor Grange Academy is an outstanding 11-18 comprehensive school situated in South Solihull in the West Midlands. Our results place the Academy in the top 5 of non-selective schools in the country and reinforces our reason for expanding and therefore offering some fantastic opportunities. In 2017 our Progress 8 score was +0.5 and our Attainment 8 was 58.9.

If you join us, you will benefit from:

- Teaching pupils who are well motivated, the school enjoys strong parental support
- An excellent induction programme
- Working in a Trust with structured professional development opportunities
- A real chance to develop in a forward thinking, highly successful academy
- Developing yourself in our 'can do' culture and positive 'want to' climate

Informal visits and conversations about the post are most welcome.

The recruitment process is robust in seeking to establish the commitment of candidates to support the school's measures to safeguard children and to identify, deter or reject people who might pose a risk of harm to children or are otherwise unsuited to work with them. The successful applicant will be required to undertake an Enhanced DBS check. All applications will be considered on their merit and the post will be offered subject to the usual health and criminal record clearance. We are committed to safeguarding and promoting.

MATHEMATICS AT TUDOR GRANGE ACADEMY SOLIHULL

The mathematics department is dynamic, forward looking and ambitious; setting themselves high targets for development and achievement for the forthcoming years, within a very supportive and reflective atmosphere. Our GCSE results have been consistently outstanding for many years and we have continued this success with the A-Level results of our new sixth form.

Students in the academy are motivated, recognise the value of mathematics and have aspirations to achieve highly. Our A-level course is the most popular in the sixth form and we offer Core Maths as part of our Post-16 provision. In KS3 and KS4 large numbers of students attend sessions outside of normal class hours to further improve their maths and join in with extra-curricular clubs.

As a department, we are further evolving our approaches towards teaching mathematics in line with the curriculum changes, and are particularly keen to expand the problem solving abilities of our students by working on activities from websites such as 'nrich' and resources such as the standards unit. We are striving to involve students more in understanding the processes of their mathematics learning, and build on the success we have had with our rigorous assessment, feedback and student action procedures. The department is regularly cited as an example of excellent practice and receives many visitors from schools across the country.

We are looking for an inspirational teacher of mathematics to be part of an already successful department. We are very much looking towards the future and need someone who will want to take advantage of the opportunities that moving towards the new curriculum provides. We are redeveloping our schemes of work so that our students are thinking and investigating for themselves in a wide range of contexts. Successful candidates will be interested in mathematics teaching, be very organised, a great communicator and willing to contribute to ongoing professional development.

The department consists of a Curriculum Leader, Lead Teachers for each of the three Key Stages and 9 other well qualified teachers who all contribute with responsibilities. There are ample resources in the department, all in digital form. All mathematics classrooms are equipped with an i-desk (containing a visualizer), speakers and interactive whiteboard.

The department sets high expectations and its performance is a key element within the academy's development plan.

Students are taught in mixed-ability groups for year 7, streamed in year 8 and students in years 9-11 are set by ability. All students sit their GCSE at the end of year 11, with our most able mathematicians studying Additional Mathematics alongside GCSE mathematics.

General Information

The successful candidate will be expected to play a full and active part in developments in the mathematics subject area and a readiness to become involved in the extra-curricular life of the school would also be greatly valued.

HOW TO APPLY

If you would like to join our outstanding team and apply for this post, please **complete the application form in full**. Please note that incomplete applications may result in possible rejection from the shortlisting process.

Section 1: Letter of Application

Please attach a letter of application and use this opportunity to show your suitability for this post as outlined in the job description and person specification and tell us why you want to join us at Tudor Grange

Sections 2, 3 and 4: Current/Most Recent Employment and Full Chronological History

Please ensure that this section is completed fully. If you have gaps in your employment please indicate the reasons for this. This may be explored further in an interview.

Section 5, 6 and 7: Education, Training and Qualifications

Please complete this fully and ensure that you have proof available of your qualifications. If you are not in possession of this proof, please be aware that we will require your permission to contact the relevant awarding bodies prior to a firm offer of appointment, should you be successful.

Section 8: Other Relevant Experience, Interests and Skills

Please add anything that is not already covered in your letter of application.

Section 9: References

Please provide two referees and their details. A telephone number or e mail address often makes this process easier and would be much appreciated. The references **MUST** include your current or most recent employer and will ask about your suitability to work with children. Open references or testimonials will not be considered. Please be aware that we may approach previous employers to verify particular experience or qualifications.

Section 10: Personal Information

Please ensure that all details are completed including your date of birth. This is to ensure that appropriate identity checks can be made. Ensure your NI number, email address and contact numbers are also included. For Teaching staff please make sure you include your Teacher Reference Number (TRN) number.

Section 15: Declaration

Please be aware that by signing the declaration you are declaring that you are not on List 99, disqualified from work with children or subject to sanctions imposed by a regulatory body e.g. the General Teaching Council (GTC) and that you either have no convictions, cautions or bind-overs, or that you have attached details of these in a sealed envelope. You are also aware that you will be subject to a DBS Disclosure appropriate to the level of the post should you be successful.

Please be aware that providing false information is an offence and could result in the application being rejected, or summary dismissal if you are appointed on the strength of this, with possible referral to the police.

ABOUT TUDOR GRANGE ACADEMY

Tudor Grange Academy is an outstanding 11 – 18 comprehensive school situated in South Solihull with a roll of 1541. The school was inspected by Ofsted in June 2014 who judged it to be outstanding overall and for each of the four main areas the school was categorised as outstanding. Tudor Grange is committed to delivering a high quality educational experience for all its students; it is also committed to sharing its experience and expertise with other educational institutions to raise attainment for all students. To this end we are a National Support School. We have also been awarded World Class School status.



From September 2011 Tudor Grange has been designated as a National Teaching School. This is a tremendously exciting development and has placed the academy at the heart of the school improvement agenda and we are a key player in the educational change agenda that Teaching School presents. This offers our staff the chance to flourish, develop and facilitate over courses for other professionals.

Tudor Grange Academy in Solihull has always been a beacon of excellence. Its focus on continuous improvement and belief that high quality teaching and learning is at the core of great schools has ensured that it has maintained its outstanding provision year on year.

Having secured outstanding provision for the students in their care, the Governors of Tudor Grange School, as it was, developed an ambition: every child deserves an outstanding education, not just the children within their school. They supported staff within Tudor Grange to engage fully in a wide range of national and international partnerships focussed on improving provision in schools. The Academies programme then provided an opportunity for them to sponsor a school in challenging circumstances, taking full responsibility for the quality of this provision and therefore potentially enabling them to realise their ambition.

In September 2009 Tudor Grange School, Solihull sponsored Tudor Grange Academy Worcester. The school is now oversubscribed and the school of choice within its local community. The success of the sponsorship of the Tudor Grange Academy, Worcester and the recognition of what school to school collaboration in a long lasting and hard relationship could achieve, gave rise to the vision for Tudor Grange Academies Trust: a group working together in a model of meaningful, focused collaboration to achieve excellence in their schools.

Tudor Grange is a school where staff are professional and hardworking, setting themselves high standards which in turn rub off on our students

Ed, Teacher of Mathematics

The Trust, as at September 2017, is a Trust of seven schools: four secondary, one all through academy and two primary academies. Restlessness characterises all our academies: we are not afraid to challenge complacency and weaknesses identified are seen as opportunities to improve, the energy and drive for the ceaseless journey comes from our key ambition: 'Every child deserves an outstanding education.'

This movement as a Trust offers a huge opportunity for up to date training, cross curricular working, bespoke professional development pathways and allows all staff to be at the cutting edge of national and international educational movement. All staff are encouraged to better themselves and we collectively celebrate success in a vibrant and healthy working community.

2017 EXAM RESULTS

A Level Results 2017

% A*-B = 58.8%

A* – E = 98.8%

% 3 or more A* – E = 94.1%

GCSE Results 2017

Progress 8 = +0.5

Attainment 8 = 58.9

English and Maths Grade 4 or above = 90%

English and Maths Grade 5 or above = 76%

EBacc (grade 4+ EngMa) = 58%

EBacc (grade 5+ EngMa) = 55%



LEADERSHIP TEAM AND GOVERNORS

Principal

Mr D Turner

Associate Principals

Mr D Butler

Mrs C Smith

Senior Leadership Team

Mrs M Bradshaw

Mr C Lee

Mr T Pole

Mr C Walker

Mr A Wright

Chair of Governors

Mr R Edwards

Tudor Grange is a progressive, dynamic and exciting place to work. The leadership team, staff and the students are always seeking excellence and consistently striving to improve approaches in teaching and learning. There are always opportunities to develop, learn and grow as a practitioner.

Emily, Teacher of English

MISSION STATEMENT

The mission of Tudor Grange Academy is to prepare young people to play an active part in a technologically mature society by providing them with exceptionally high level skills, qualifications and attitudes that will benefit themselves and the wider community in an internationally competitive world.

OUR FACILITIES

Tudor Grange Academy Solihull was opened in 1956 as a grammar school for boys. It occupies a site on the west side of Solihull in an extensive area of parkland. Over the years our facilities have been extended and improved to offer our students the very best environment in which to grow and thrive.

The Academy is made up of 2 main buildings with additional specialist buildings for Sport, Music, Geography, Teacher Training and Technology.

- Ten Science Laboratories
- Specialist building for Design & Technology, Art and Business
- Specialist building for Music with rehearsal rooms
- Six ICT suites with state-of-the-art multimedia PCs on a Windows platform
- Whole school network of over 300 PCs
- Media Studies suite with Mac PCs
- Student Services block with first aid and meeting rooms
- Large Sports Centre with Sports Hall and Changing Rooms
- Extensive sports fields surrounding the site
- Two cafeteria style dining areas with additional Food Bar in playground
- Two large playgrounds with table tennis tables
- 6th Form Centre with 4 classrooms, study areas and lecture style seating for 50
- 6th Form only Café with study area
- 6th Form Quiet Study Area



ACADEMIC ORGANISATION

At Tudor Grange we operate a two week timetable with 25 one hour lessons in each week.

The philosophy of Tudor Grange is that each student is entitled to a curriculum that prepares him or her for life's opportunities, responsibilities and experiences. Statutory requirements of the national curriculum are supplemented by the Academy's broader curricular provision.

At key stage three, students follow a common curriculum. In years 9, 10 and 11 students are offered greater choice, enabling a more personalised curriculum that meets the needs of each individual learner.

Key Stage Three

All students in their first two years at the Academy study the core curriculum which includes English, mathematics, science, physical education, ICT, PSD and religious studies. Their curriculum is enriched by studies in humanities, visual arts, music, design and technology, modern foreign languages and food. All students participate in an enrichment programme.

During year 8, full consultation takes place between staff, students and parents to support curriculum choices at key stage four.

Key Stage Four

The key stage four curriculum is designed to give students every opportunity to achieve their full potential and to maximise the choices available at post-16.

All students in years 9, 10 and 11 study English language, English literature, mathematics, science, religious studies and physical education. PSD is taught across the curriculum.

There is a considerable amount of curriculum choice available and students can choose to study from a range of GCSEs.

Key Stage Five

The curriculum at 6th Form is designed to prepare students for both university and the world of work. Each 6th Form student has their own specific goal and ambition and we ensure that each student has a personalised curriculum that meets their individual requirements. Students choose from a diverse range of qualifications so that they are able to participate in challenging and enjoyable courses.

We provide a variety of opportunities within the Academy, and are proud that our students have been able to succeed as peer mentors, sports coaches, volunteer care workers and much, much more.

I like the 'yes culture' that exists within the school, which means that those with the passion and drive to introduce new ideas, from departmental level to whole school, are given the confidence to move forward.

Tom, Teacher of History

PASTORAL ORGANISATION

Students are looked after in one of six Colleges; Brunel, Darwin, Edison, Morse, Newton and da Vinci. Each college has a College Leader, a Student Achievement Support Manager (SASM) and a College Administrator.



Da Vinci



Brunel



Darwin



Edison



Morse



Newton

In addition, we have a staff Year Champion for each year group.

When a student starts at Tudor Grange they are placed in one of 66 'vertical' tutor groups. Each tutor group has students from years 7 – 11 and is looked after by a tutor. Their tutor will monitor all aspects of the student's school life and is the first port of call for parents contacting the Academy.

Our newly refurbished Student Services offers a range of facilities for our young people including a first aid room with a dedicated first aider available all day every day.

EXTRA CURRICULAR ACTIVITIES

As an Academy we feel strongly that the development of motor and interpersonal skills is enhanced by the opportunities and experiences students have outside of the classroom. Hence, we provide a diverse breadth of activities that are part of a weekly timetable for students to opt into. These activities run before, during or after school and are delivered by willing and specialist staff who want to relay their knowledge and passion.

The list below shows just a small selection of the programme on offer:

- Sports Teams including Football, Rugby, Netball, Hockey, Cricket, Basketball, Handball and Trampolining for both boys and girls
- Various Choirs
- Various Orchestras
- Cheerleading
- Art and Photography
- Drama
- Dance
- STEM Club
- Combined Cadet Force (CCF)
- Chess Club
- Cooking Club



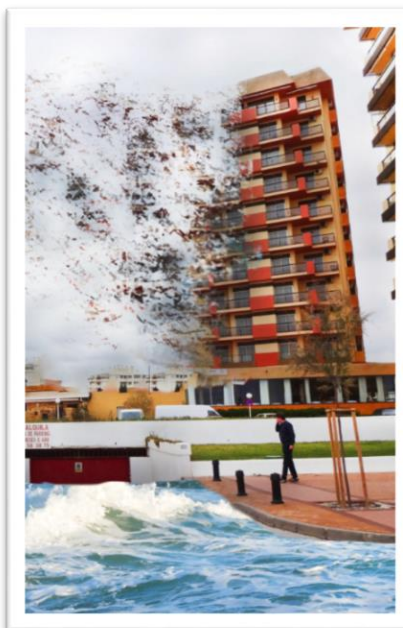
CREATIVE ARTS

All students study music, drama and art at KS3. At KS4 students can choose from a wide range of options including Art, Photography, Technology, Drama and Music.

There are also opportunities to attend drama, dance, art and music clubs outside of the classroom.

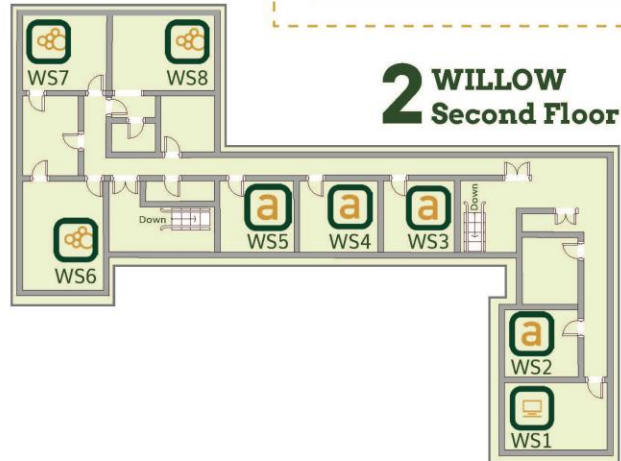
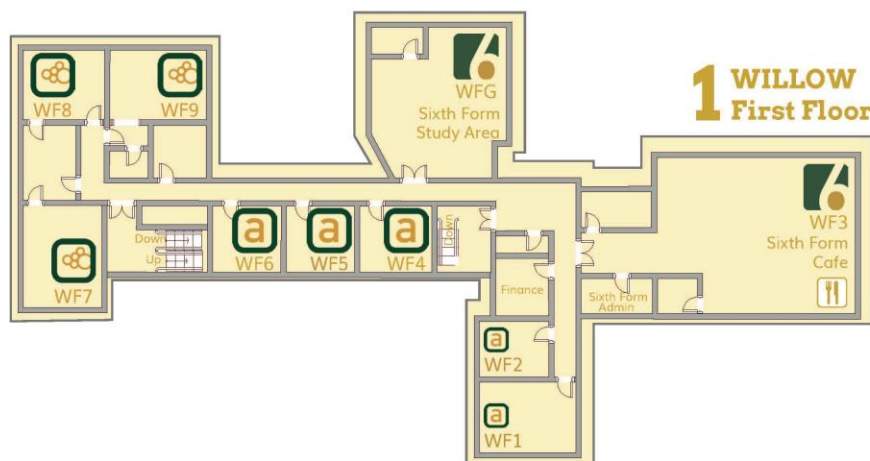
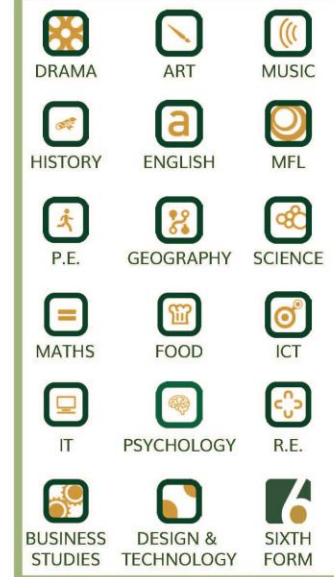
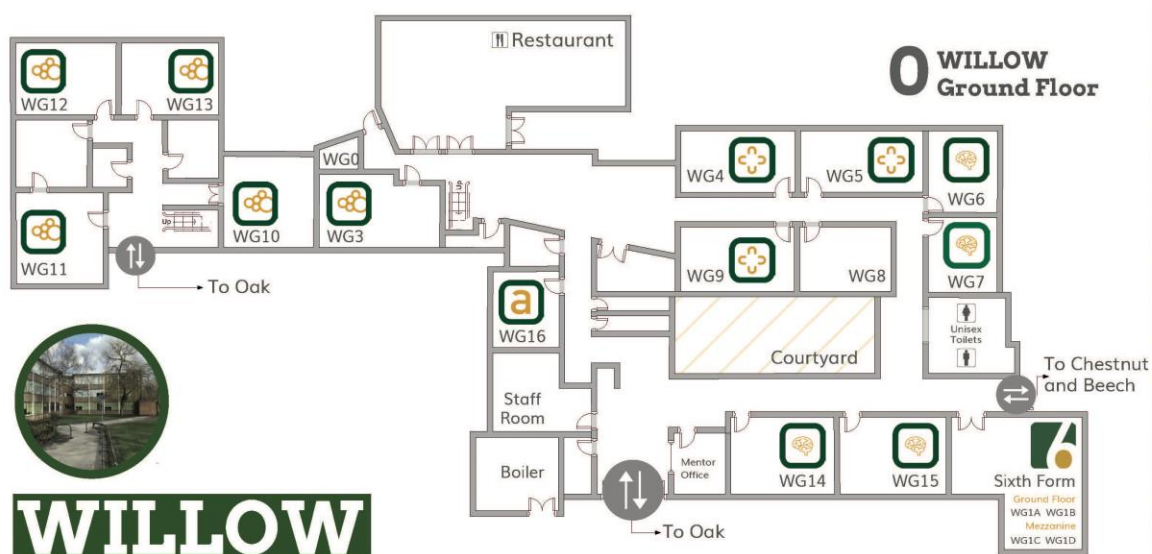
We organise several musical concerts and art exhibitions throughout the year. At Christmas 2016 our drama teacher wrote and directed our first ever pantomime pulling together all the creative arts departments and providing many opportunities for our students to take part. This was successfully repeated in December 2017.

Previous productions have included Annie, Grease and Oliver.



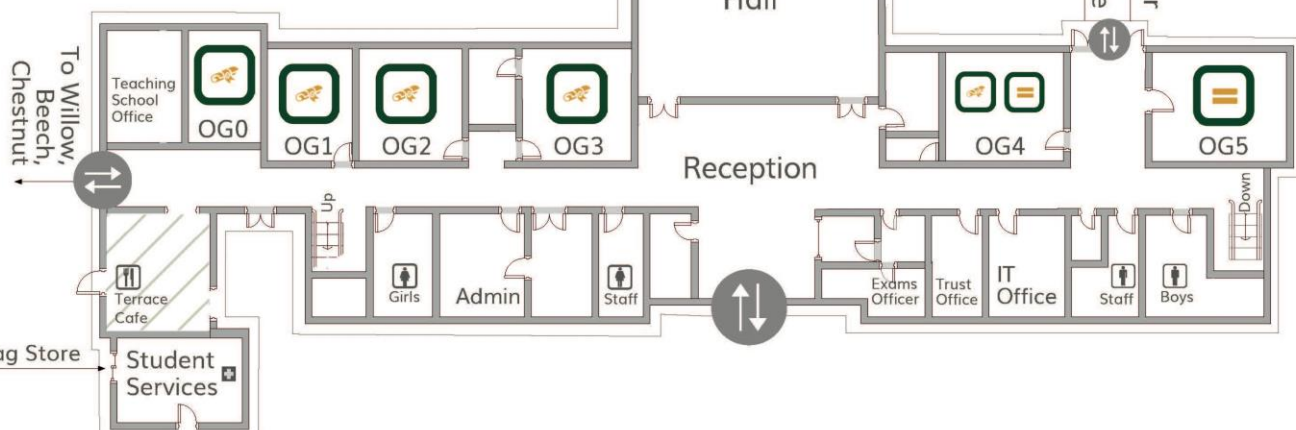


OAK: Admin, Maths, MFL, IT, History, Food
CHESTNUT: Music, LRC
BEECH: Geography
THE LODGE: Teaching School
POPLAR: Business, Drama, Art, Design & Technology, ICT
WILLOW: Sixth Form, English, Science, RE, Psychology, Sociology, Media
SYCAMORE: Sports Hall

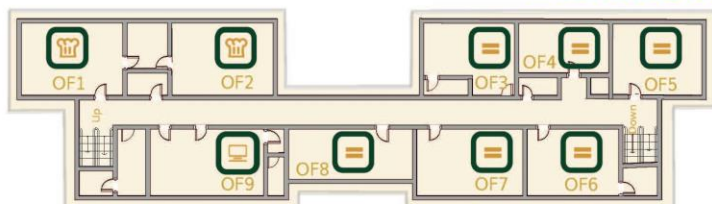


DRAMA	ART	MUSIC	MATHS	R.E.	BUSINESS STUDIES
HISTORY	ENGLISH	MFL	PSYCHOLOGY	ICT	DESIGN & TECHNOLOGY
P.E.	GEOGRAPHY	SCIENCE	FOOD	IT	TEACHING SCHOOL

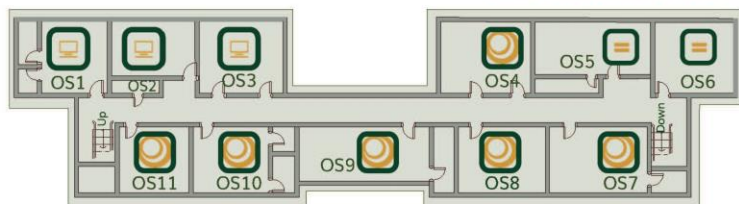
0 OAK Ground Floor



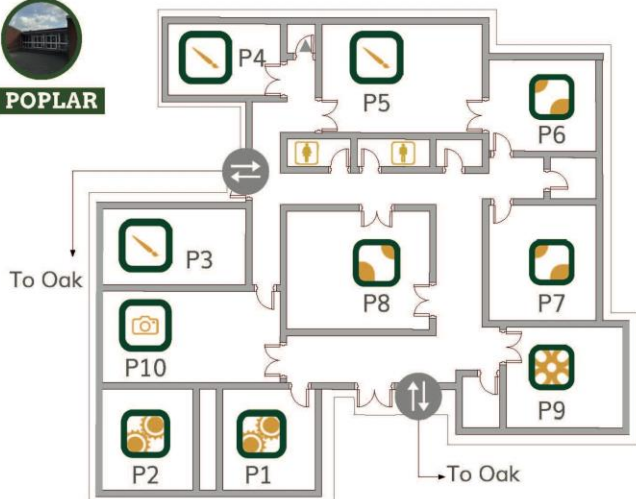
1 OAK First Floor



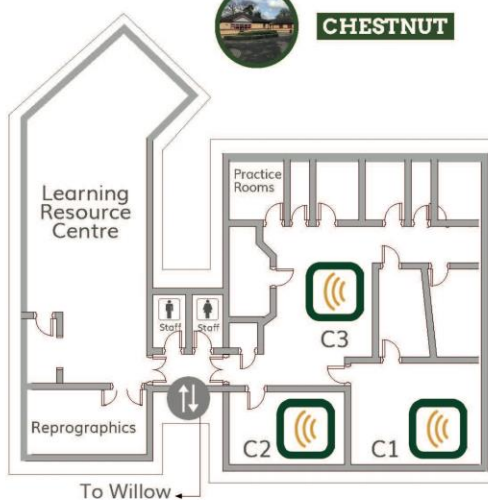
2 OAK Second Floor



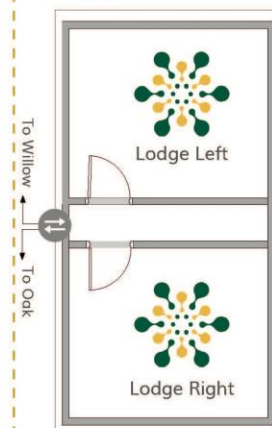
POPLAR



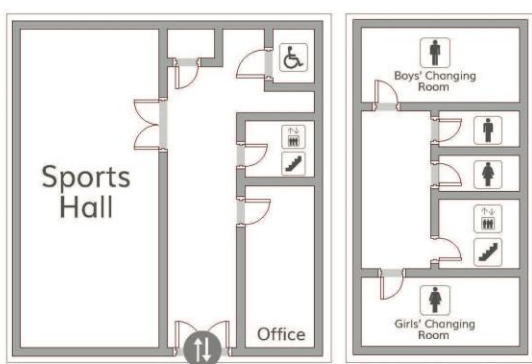
CHESTNUT



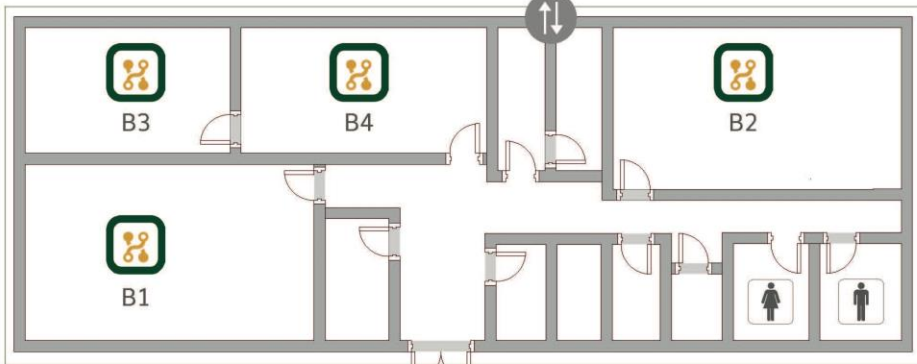
THE LODGE



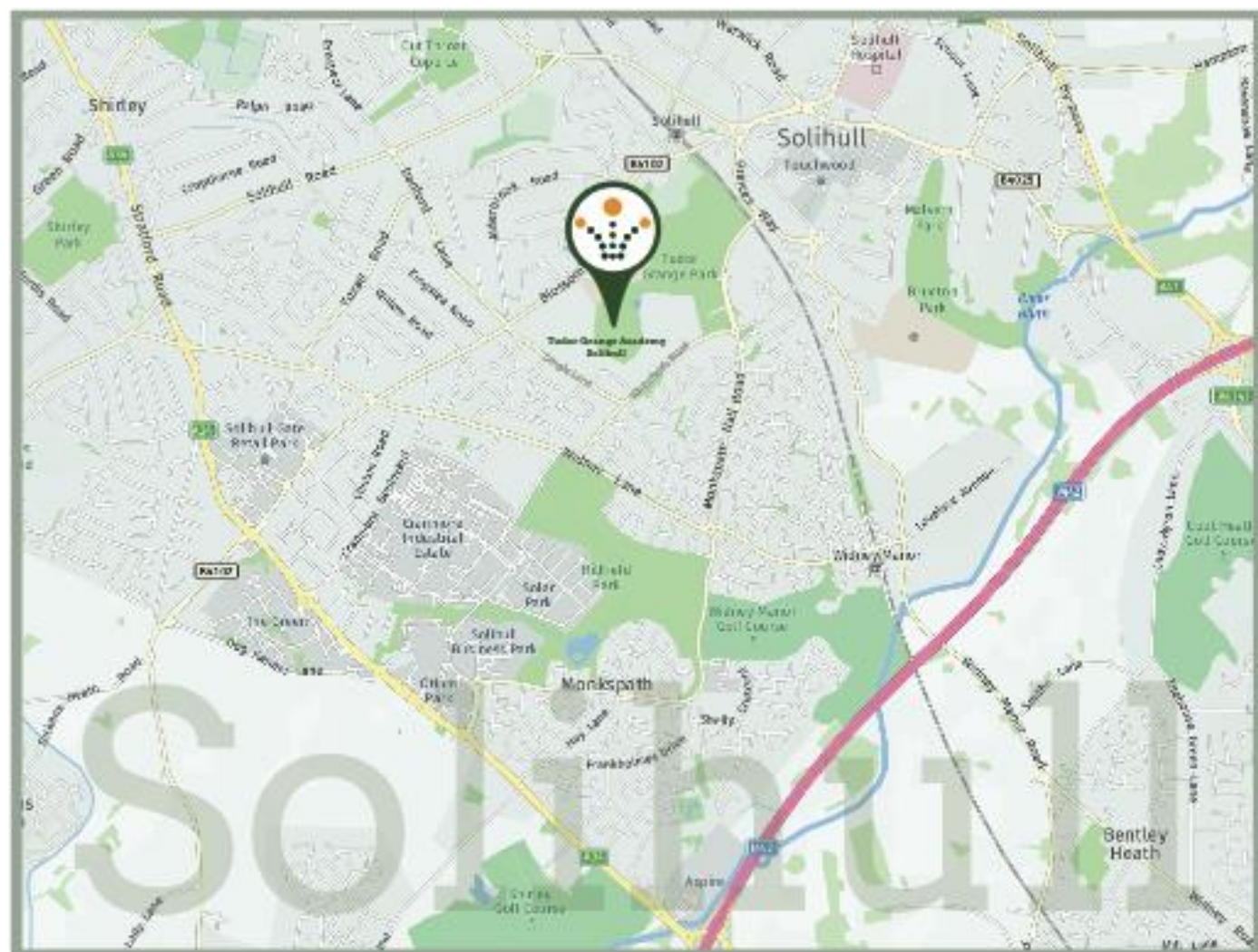
SYCAMORE



BEECH



We Are Here...



Directions from M42 Junction 4

1. Leave motorway at Junction 4 and follow exit for A34 (Stratford Road) Shirley
2. Stay on A34 until the fourth roundabout (Porcelanosa on your left as you come to island) and turn right onto B4102 (Marshall Lake Road)
3. Stay on B4102 past retail parks up to traffic lights
4. Continue at traffic lights (Marshall Lake Road changes to Blossomfield Road)
5. At the next island turn right into Dingle Lane
6. Tudor Grange Academy is along Dingle Lane, second drive to your left
7. Please press the intercom at the barrier to speak to Reception to gain entry to park onsite
8. Reception is located at the bottom of the drive, on the right through the large oak doors



Tudor Grange Academy Solihull

Dingle Lane, Solihull, B91 3PD

T.: 0121 705 5100 F.: 0121 703 8226

office@solihull.tgacademy.org.uk

www.solihull.tgacademy.org.uk