

Blenheim High School

Child Protection and Safeguarding Policy



At Blenheim High School, the staff and Governors adhere to the principles outlined in the Children Act 1989 believing that all children have a right to be protected from abuse. It is the intention of the procedures within this Policy to ensure that the appropriate action is taken immediately where it is alleged that a student is suspected of being abused. Our prime concern at all times must be the interests and safety of the student(s) and on every occasion that any member of staff has reason to suspect a student has suffered abuse, or is at risk of suffering abuse, one of the school's Designated Safeguarding Lead (DSL) is informed. This should be read in conjunction with the Online Safety Policy.

Key Personnel

The Designated Safeguarding Lead (DSL) is: Mrs. D. Mills,

Contact details: email: mills@blenheim.surrey.sch.uk Telephone: 01372 745333

The deputy DSL(s) are: Mr. C. Mundy and Ms. J. Jordan-Spiteri

Contact details: email: mundy@blenheim.surrey.sch.uk Telephone: 01372 745333

Contact details: email: jordanspiteri@blenheim.surrey.sch.uk Telephone: 01372 745333

The nominated child protection governor is: Mrs. C.Varga

Contact details: email: varga@blenheim.surrey.sch.uk Telephone: 01372 745333

The Co-Principals are: Mr. S. Hillier and Mr. R. Isaac

Contact details: email: coprincipals@blenheim.surrey.sch.uk Telephone: 01372 745333

The Chair of Governors is: Mr. R. Kitley

Contact details: email: kitley@blenheim.surrey.sch.uk Telephone: 01372 745333

Terminology

Safeguarding and promoting the welfare of children is defined as:

- protecting children from maltreatment;
- preventing impairment of children's health or development;
- ensuring that children grow up in circumstances consistent with the provision of safe and effective care; and
- taking action to enable all children to have the best outcomes.

Child Protection is a part of safeguarding and promoting welfare. It refers to the activity that is undertaken to protect specific children who are suffering, or are likely to suffer, significant harm.

Staff refers to all those working for or on behalf of the school, full or part time, temporary or permanent, in either a paid or voluntary capacity. This includes ancillary supply and self-employed staff, contractors, volunteers working with children etc and Governors.

Child includes everyone under the age of 18.

Parents refers to birth parents and other adults who are in a parenting role, for example step-parents, foster carers and adoptive parents.

SSCB – Surrey Safeguarding Children Board

AEO – Area Education Officer

Supporting Notes:

1.0 Introduction

This policy has been developed in accordance with the principles established by the Children Acts 1989 and 2004; the Education Act 2002, and in line with government publications:

- Working together to Safeguard Children (HM Government, March 2015)
- Keeping Children Safe in Education (DfE, September 2016)
- What to do if you're worried a child is being abused (HM Government, March 2015)

The guidance reflects "Safeguarding Children and Safer Recruitment in Education" DfES September 2016, Keeping Children Safe in Education and Surrey Safeguarding Children Board SSCB Child Protection Procedures.

1.2 The Governing body takes seriously its responsibility under section 1752 of the Education Act 2002 to safeguard and promote the welfare of children; and to work together with other agencies to ensure adequate arrangements within our school to identify, assess, and support those children who are suffering harm. There is a designated Governor responsible for the strategic oversight of Child Protection and Safeguarding.

1.3 We recognise that all adults, including temporary staff, volunteers and governors, have a full and active part to play in protecting our students from harm, and that the child's welfare is our paramount concern. This policy applies to all members of staff and Governors in the school.

1.4 All staff believe that our school should provide a caring, positive safe and stimulating environment that promotes the social, physical and moral development of the individual child.

1.5 Pupils and Staff involved in Child Protection issues will receive appropriate support.

1.6 The aims of this policy are:

- 1.6.1 To support the child's development in ways that will foster security, confidence and independence.
- 1.6.2 To provide an environment in which children and young people feel safe, secure, valued and respected, and feel confident, and know how to, approach adults if they are in difficulties, believing they will be effectively listened to.
- 1.6.3 To raise the awareness of all teaching and non-teaching staff of the need to safeguard children and of their responsibilities in identifying and reporting possible cases of abuse. (Ref Appendices 1 & 2)

- 1.6.4 To provide a systematic means of monitoring children known or thought to be at risk of harm, and ensure we, the school, contribute to assessments of need and support packages for those children.
- 1.6.5 To emphasise the need for good levels of communication between all members of staff.
- 1.6.6 To develop a structured procedure within the school which will be followed by all members of the school community in cases of suspected abuse.
- 1.6.7 To develop and promote effective working relationships with other agencies, especially the Police and Social Care.
- 1.6.8 To ensure that all staff working within our school who have access to children have been checked as to their suitability, including verification of their identity, qualifications, and a satisfactory List 99 or Enhanced DBS (Disclosure and Barring Service) check (according to guidance), and a single central record is kept for audit.

2.0 Safe School, Safe Staff

2.1 We will ensure that;

- 2.1.2. all staff receive information about the school's safeguarding arrangements, the school's safeguarding statement, staff behaviour policy (code of conduct), Child Protection and Safeguarding Policy, the role and names of the Designated Safeguarding Lead and their deputy(ies), and Keeping Children Safe in Education part 1 and annex A on induction;
- 2.1.3. all staff receive safeguarding and child protection training at induction in line with advice from Surrey Safeguarding Children's Board which is regularly updated and receive safeguarding and child protection updates (for example, via email, e-bulletins and staff meetings), as required, but at least annually;
- 2.1.4. all members of staff are trained in and receive regular updates in online safety and reporting concerns (See Appendix 3);
- 2.1.5. all staff and governors have regular child protection awareness training, updated by the DSL as appropriate, to maintain their understanding of the signs and indicators of abuse;
- 2.1.6. The Child Protection and Safeguarding policy is made available via the school website and School Reception and parents/carers are made aware of this policy and their entitlement to have a copy via the school handbook/newsletter/website. All parents/carers are made aware of the responsibilities of staff members with regard to child protection procedures through the publication of the Child Protection Policy and reference to it in the school's handbook.
- 2.1.7. the school provides a coordinated offer of Early Help when additional needs of children are identified and contributes actively to early help arrangements and inter-agency working and plans;
- 2.1.8. Our lettings policy will seek to ensure the suitability of adults working with children on school sites at any time;
- 2.1.9. Community users organising activities for children are aware of the school's Child Protection Policy, guidelines and procedures;
- 2.1.10. The name of the designated members of staff for child protection, the Designated Safeguarding Lead and deputy(ies), are clearly advertised at the Front Desk Reception with a statement explaining the school's role in referring and monitoring cases of suspected abuse;

- 2.1.11. All staff will be given a copy of Part 1 and Annex A of Keeping Children Safe in Education 2016 and will sign to say they have read and understood it. This applies to the Governing Body in relation to part 2 of the same guidance.
- 2.1.12. Each member of staff is also given a laminated card with contact details of DSLs and what to do/not do in the event of a disclosure or concern. These cards are also kept at the Reception Desk and issued to all professionals and volunteers working with children in addition to other safeguarding checks.
- 2.1.13. We will ensure that child protection type concerns or allegations against adults working in school are referred to the LADO for advice, and that any member of staff found not suitable to work with children will be notified to the Independent Safeguarding Authority for consideration for barring, following resignation, dismissal, or when we cease to use their service as a result of a substantiated allegation, in the case of a volunteer.
- 2.1.14. The Leadership Team who are involved in recruitment and at least one member of the governing body will also complete Safer Recruitment Training (currently on-line on the DfE website) to be renewed every 5 years.

2.2 Our procedures will be regularly reviewed and up-dated.

3 Responsibilities

3.2 The Designated Safeguarding Lead:

- 3.2.1 Holds ultimate responsibility for safeguarding and child protection in the school;
- 3.2.2 Encourages a culture of listening to children and taking account of their wishes and feelings
- 3.2.3 Is appropriately trained with updates every two years and will refresh their knowledge and skills at regular intervals but at least annually;
- 3.2.4 Will ensure that when a pupil leaves the school, their child protection file is passed to the new school (separately from the main pupil and ensuring secure transit) and that confirmation of receipt is obtained.
- 3.2.5 Will ensure that a copy of the CP file is retained until such a time that the new school acknowledges receipt of the original file. The copy should then be shredded.
- 3.2.6 Will ensure that all staff sign to say they have read, understood and agree to work within the school's Child Protection and Safeguarding Policy, Staff Behaviour Policy (Code of Conduct) and Keeping Children Safe in Education Part 1 and Annex A and ensure that the policies are used appropriately;
- 3.2.7 Will contribute to and provide, with the Headteacher and Chair of Governors, the 'Audit of Statutory Duties and Associated Responsibilities' to be submitted annually to the Education Safeguarding Team at Surrey County Council.
- 3.2.8 Has an understanding of locally agreed processes for providing early help and intervention and will support members of staff where Early Help is appropriate.
- 3.2.9 Will ensure that the name of the designated members of staff for Child Protection, and Designated Safeguarding Lead and Deputies, are clearly advertised in the school, with a statement explaining the school's role in referring and monitoring cases of suspected abuse.

3.3 The Designated Safeguarding Lead is also responsible for:

- 3.3.1 Referring a child if there are concerns about possible abuse, to the Children's Services Area Referral, Assessment and Intervention Service (RAIS) Team, and acting as a focal point for staff to discuss concerns. Referrals should be made in writing, following a telephone call using the Multi Agency Referral Form (MARF).
- 3.3.2 Keeping written records in a locked cabinet of concerns about a child even if there is no need to make an immediate referral. Our new secure Online Child Protection CPOMS will also be used.

- 3.3.3 Ensuring that all such child protection records are kept confidentially and securely, **separate** from student records, until the child's 25th birthday, and are copied on to the child's next school or college. (See 5.6)
- 3.3.4 Ensuring that an indication of the existence of the additional file in 3.1.3 above is marked on the student records.
- 3.3.5 Liaising with other agencies and professionals in line with working together to safeguard children
- 3.3.6 Ensuring that they attend either case conferences, core groups, or other multi-agency planning meetings, contribute to assessments, and provide reports which have been shared with the parents.
- 3.3.7 Ensuring that any student currently with a child protection plan who is absent without explanation for two days is referred without delay to their key worker's Social Care Team.
- 3.3.8 Organising child protection induction, and update training annually, for all school staff. Updating staff on "Hot Topics" such as female Genital Mutilation (FGM) and Child Sexual Exploitation (CSE) including information displayed on Staffroom Safeguarding Noticeboard.
- 3.3.9 Providing, with the Headteacher, an annual report for the governing body, detailing any changes to the policy and procedures; training undertaken by the DSL, and by all staff and governors; number and type of incidents/cases, and number of children with child protection plans (anonymised). A weekly update is also given to designated Child Protection and Safeguarding Governors and the Leadership Team including online safety
- 3.3.10 Organising child protection induction, and annual update training for all school staff.

3.4 The **Deputy Designated Safeguarding Lead(s)**

- 3.4.1 Are trained to the same standard as the Designated Safeguarding Lead and, in the absence of the DSL, carries out those functions necessary to ensure the ongoing safety and protection of pupils. In the event of the long-term absence of the DSL the deputy will assume all of the functions above.

3.5 **All School Staff**

- 3.5.1 Understand that it is everyone's responsibility to safeguard and promote the welfare of children and that they have a role to play in identifying concerns, sharing information and taking prompt action;
- 3.5.2 Consider, at all times, what is in the best interests of the child;
- 3.5.3 Know how to respond to a pupil who discloses abuse through delivery of 'Working together to Safeguard Children', and 'What to do if you suspect a Child is being Abused' (2015);
- 3.5.4 Will refer any safeguarding or child protection concerns to the DSL or if necessary where the child is at immediate risk to the police or Children's Social Care;
- 3.5.5 Are aware of the Early Help process and understand their role within it including identifying emerging problems for children who may benefit from an offer of Early Help, liaising with the DSL in the first instance and supporting other agencies and professionals in an early help assessment through information sharing. In some cases staff may act as the Lead Professional in Early Help Cases.
- 3.5.6 Will provide a safe environment in which children can learn;

3.6 **The Headteacher** will ensure that

- 3.6.1 The Child Protection and Safeguarding Policy and procedures are implemented and followed by all staff;
- 3.6.2 sufficient time, training, support, resources, including cover arrangements where necessary, is allocated to the DSL and deputy(ies) DSL(s) to carry out their roles effectively, including the assessment of pupils and attendance at strategy discussions and other necessary meetings;
- 3.6.3 where there is a safeguarding concern that the child's wishes and feelings are taken into account when determining what action to take and what services to provide;
- 3.6.4 systems are in place for children to express their views and give feedback which operate with the best interest of the child at heart;
- 3.6.5 all staff feel able to raise concerns about poor or unsafe practice and that such concerns are handled sensitively and in accordance with the whistle-blowing procedures;
- 3.6.6 that pupils are provided with opportunities throughout the curriculum to learn about safeguarding, including keeping themselves safe online;
- 3.6.7 they liaise with the Local Authority Designated Officer (LADO), before taking any action and on an ongoing basis, where an allegation is made against a member of staff or volunteer;

3.6.8 anyone who has harmed or may pose a risk to a child s referred to the Disclosure and Barring Service.

4.0 Supporting Children

- 4.1 We recognise that a child who is abused or witnesses violence may feel helpless and humiliated, may blame themselves, and find it difficult to develop and maintain a sense of self-worth.
- 4.2. We recognise that the school may provide the only stability in the lives of children who have been abused or who are at risk of harm.
- 4.3. We accept that research shows that the behaviour of a child in these circumstances may range from that which is perceived to be normal to aggressive or withdrawn.
- 4.4. Our school will support all students by:
 - 4.4.1 Encouraging self-esteem and self-assertiveness, through the curriculum as well as our relationships, whilst not condoning aggression or bullying.
 - 4.4.2 Promoting a caring, safe and positive environment within the school and encourage students to seek help.
 - 4.4.3 Liaising and working together with all other support services and those agencies involved in the safeguarding of children.
 - 4.4.4 Notifying Social Care as soon as there is a significant concern and asking that any concerns are recorded by the Local Referral, Intervention and Assessment Service NE.
 - 4.4.5 Providing continuing support to a student about whom there have been concerns who leaves the school by ensuring that appropriate information is copied under confidential cover to the student's new school or FE College and ensuring the school medical records are forwarded as a matter of priority.
 - 4.4.6 Detailed information is available on our website for Parents/Carers and for young people.
<http://www.blenheim.surrey.sch.uk/page/?title=Student+Wellbeing+and+Pastoral+Intervention&pid=117>

5. Confidentiality

- 5.1. Blenheim High School recognises that in order to effectively meet a child's needs, safeguard their welfare and protect them from harm the school must contribute to inter-agency working in line with Working Together to Safeguard Children (2015) and share information between professionals and agencies where there are concerns.
- 5.2. All staff must be aware that they have a professional responsibility to share information with other agencies in order to safeguard children and that the Data Protection Act 1998 is not a barrier to sharing information where the failure to do so would place a child at risk of harm.
- 5.3. We recognise that all matters relating to child protection are confidential.
- 5.4. The Headteacher or DSLs will disclose any information about a student to other members of staff on a need to know basis only.
- 5.5. All staff must be aware that they have a statutory responsibility to appropriately share information with other agencies in order to safeguard children.
- 5.6. All staff must be aware that they cannot promise a child to keep secrets which might compromise the child's safety or wellbeing.

5.7. We will always undertake to share our intention to refer a child to Social Care with their parents /carers knowledge unless to do so could put the child at greater risk of harm, or impede a criminal investigation. If in doubt, we will consult with an Assistant Team Manager at the Local Referral, Intervention and assessment services helpline at this point.

5.8. Information referring to any child(en) sent to outside agencies will always use a secure egress email. Any CP files for children attending a new school will be delivered by hand or by Recorded Delivery.

6. Child Protection Procedures

6.1. Abuse and neglect are forms of maltreatment of a child. Somebody may abuse or neglect a child by inflicting harm or by failing to act to prevent harm. Children may be abused in the family or in an institutional or community setting by those known to them or, more rarely, by others (e.g. via the internet). They may be abused by an adult or adults or by another child or children.

6.2. Further information about the four categories of abuse; physical, emotional, sexual and neglect, and indicators that a child may be being abused can be found in appendix 1.

6.3. Any child in any family in any school could become a victim of abuse. Staff should always maintain an attitude of "It could happen here".

6.4. There are also a number of specific safeguarding concerns that we recognise our pupils may experience;

- 6.4.2. child missing from education
- 6.4.3. child missing from home or care
- 6.4.4. child sexual exploitation (CSE)
- 6.4.5. bullying including cyberbullying
- 6.4.6. domestic abuse
- 6.4.7. drugs
- 6.4.8. fabricated or induced illness
- 6.4.9. faith abuse
- 6.4.10. female genital mutilation (FGM)
- 6.4.11. forced marriage
- 6.4.12. gangs and youth violence
- 6.4.13. gender-based violence/violence against women and girls (VAWG)
- 6.4.14. mental health
- 6.4.15. private fostering
- 6.4.16. radicalisation
- 6.4.17. youth produced sexual imagery (sexting)
- 6.4.18. teenage relationship abuse
- 6.4.19. trafficking
- 6.4.20. peer on peer abuse

6.5. Staff are aware that behaviours linked to drug taking, alcohol abuse, truanting and sexting put children in danger and that safeguarding issues can manifest themselves via peer on peer abuse.

6.6. We also recognise that abuse, neglect and safeguarding issues are complex and are rarely standalone events that can be covered by one definition or label. Staff are aware that in most cases multiple issues will overlap one another.

6.7. If staff are concerned about a child's welfare

6.7.2. If staff notice any indicators of abuse/neglect or signs that a child may be experiencing a safeguarding issue they should record these concerns on an Initial Concerns Form or CPOMS and pass it to the DSL and DDSs immediately. They may also discuss their concerns in person with the DSL but the details of the concern should be recorded in writing.

6.7.3. There will be occasions when staff may suspect that a pupil may be at risk, but have no 'real' evidence. The pupil's behaviour may have changed, their artwork could be bizarre, they may write stories or poetry that reveal confusion or distress, or physical or inconclusive signs may have been noticed.

6.7.4. Blenheim High School recognise that the signs may be due to a variety of factors, for example, a parent has moved out, a pet has died, a grandparent is very ill or an accident has occurred. However, they may also indicate a child is being abused or is in need of safeguarding.

6.7.5. In these circumstances staff will try to give the child the opportunity to talk. It is fine for staff to ask the pupil if they are OK or if they can help in any way.

- 6.7.6. Staff should follow the guidance discussed during training sessions and use the Initial Concerns Form or CPOMS to record these early concerns and give the completed form to the DSL and DDSLs.
- 6.7.7. Following an initial conversation with the pupil, if the member of staff remains concerned they should discuss their concerns with the DSL and put them in writing.
- 6.7.8. If the pupil does begin to reveal that they are being harmed, staff should follow the advice below regarding a pupil making a disclosure.

6.8. If a pupil discloses to a member of staff

- 6.8.2. We recognise that it takes a lot of courage for a child to disclose they are being abused. They may feel ashamed, guilty or scared, their abuser may have threatened that something will happen if they tell, they may have lost all trust in adults or believe that what has happened is their fault. Sometimes they may not be aware that what is happening is abuse.
 - 6.8.3. A child who makes a disclosure may have to tell their story on a number of subsequent occasions to the police and/or social workers. Therefore, it is vital that their first experience of talking to a trusted adult is a positive one.
 - 6.8.4. During their conversation with the pupil staff will follow the procedures highlighted in safeguarding training and referred to on Safeguarding cards;
 - 6.8.4.1. Listen to what the child has to say and allow them to speak freely
 - 6.8.4.2. Remain calm and not overreact or act shocked or disgusted – the pupil may stop talking if they feel they are upsetting the listener
 - 6.8.4.3. Reassure the child that it is not their fault and that they have done the right thing in telling someone
 - 6.8.4.4. Not be afraid of silences – staff must remember how difficult it is for the pupil and allow them time to talk
 - 6.8.4.5. Take what the child is disclosing seriously
 - 6.8.4.6. Ask open questions and avoid asking leading questions
 - 6.8.4.7. Avoid jumping to conclusions, speculation or make accusations
 - 6.8.4.8. Not automatically offer any physical touch as comfort. It may be anything but comforting to a child who is being abused.
 - 6.8.4.9. Avoid admonishing the child for not disclosing sooner. Saying things such as ‘I do wish you had told me about it when it started’ may be the staff member’s way of being supportive but may be interpreted by the child to mean they have done something wrong.
 - 6.8.4.10. Tell the child what will happen next.
 - 6.8.5. If a pupil talks to any member of staff about any risks to their safety or wellbeing the staff member will let the child know that they will have to pass the information on – staff are not allowed to keep secrets.
 - 6.8.6. The member of staff should write up their conversation as soon as possible on the Initial Concern Form in the child’s own words. Staff should make this a matter of priority. The record should be signed and dated, the member of staff’s name should be printed and it should also detail where the disclosure was made and who else was present. The record should be handed or sent to the DSL and DDSLs. This can be done using Initial Concern Forms or CPOMS.
- #### **6.9. Notifying Parents**
- 6.9.2. The School will normally seek to discuss any concerns about a pupil with their parents. This must be handled sensitively and the DSL will make contact with the parent in the event of a concern, suspicion or disclosure.
 - 6.9.3. However, if the school believes that notifying parents could increase the risk to the child or exacerbate the problem, advice will first be sought from children’s social care.
 - 6.9.4. Where there are concerns about forced marriage or honour based violence parents should not be informed a referral is being made as to do so may place the child at a significantly increased risk.

6.10. Making a referral

- 6.10.2. Concerns about a child or a disclosure should be discussed with the DSL who will help decide whether a referral to children's social care, early help or other support is appropriate in accordance with Surrey Safeguarding Children's Board Levels of Need document¹.
- 6.10.3. If a referral is needed then the DSL should make it. However, anyone can make a referral and if for any reason a staff member thinks a referral is appropriate and one hasn't been made they can and should consider making a referral themselves. All staff are aware of this.
- 6.10.4. The child and the parents will be told that a referral is being made, unless to do so would increase the risk to the child.
- 6.10.5. If after a referral the child's situation does not appear to be improving the DSL (or the person that made the referral) should press for re-consideration to ensure their concerns have been addressed, and most importantly the child's situation improves.
- 6.10.6. If a child is in immediate danger or is at risk of harm a referral should be made to children's social care and/or the police immediately. Anybody can make a referral.
- 6.10.7. Where referrals are not made by the DSL, the DSL should be informed as soon as possible.

6.11. Supporting Staff

- 6.11.2. We recognise that staff working in the school who have become involved with a child who has suffered harm, or appears to be likely to suffer harm may find the situation stressful and upsetting. We will support such staff by providing an opportunity to talk through their anxieties with the DSLs and to seek further support as appropriate.

7. Children who are particularly vulnerable

- 7.1. Blenheim High School recognises that some children are more vulnerable to abuse and neglect and that additional barriers exist when recognising abuse for some children.
- 7.2. We understand that this increase in risk is due more to societal attitudes and assumptions or child protection procedures which fail to acknowledge children's diverse circumstances, rather than the individual child's personality, impairment or circumstances.
- 7.3. In some cases possible indicators of abuse such as a child's mood, behaviour or injury might be assumed to relate to the child's impairment or disability rather than giving a cause for concern. Or a focus may be on the child's disability, special educational needs or situation without consideration of the full picture. In other cases, such as bullying, the child may be disproportionately impacted by the behaviour without outwardly showing any signs that they are experiencing it.
- 7.4. Some children may also find it harder to disclose abuse due to communication barriers, lack of access to a trusted adult or not being aware that what they are experiencing is abuse.
- 7.5. To ensure that all of our pupils receive equal protection we will give special consideration to children who are;
- 7.6. Disabled or have special educational needs
- 7.7. Young carers
- 7.8. Affected by parental substance misuse, domestic abuse or parental mental health needs
- 7.9. Asylum seekers
- 7.10. Living away from home
- 7.11. Vulnerable to being bullied or engaged in bullying
- 7.12. Already viewed as a 'problem'
- 7.13. Living in temporary accommodation
- 7.14. Live transient lifestyles
- 7.15. Living in chaotic and unsupportive home situations
- 7.16. Vulnerable to discrimination on the grounds of race, ethnicity, religion, disability or sexuality
- 7.17. At risk of sexual exploitation
- 7.18. Do not have English as a first language
- 7.19. At risk of female genital mutilation
- 7.20. At risk of forced marriage
- 7.21. At risk of being drawn into extremism.

8. Allegations against staff

- 8.1. All school staff should take care not to place themselves in a vulnerable position with a child. It is always advisable for interviews or work with individual children or parents to be conducted in view of other adults.
- 8.2. All Staff are made aware of the importance of maintaining a professional demeanour and boundaries at all times when dealing with students.
- 8.3. All Staff should be aware of Surrey's Guidance on Behaviour Issues, and the school's own Behaviour Management policy.
- 8.4. Guidance about conduct and safe practice will be given at induction.
- 8.5. We understand that a student may make an allegation against a member of staff.
- 8.6. If such an allegation is made, or information is received which suggests that a person may be unsuitable to work with children, the member of staff receiving the allegation or aware of the information, will immediately inform the Headteacher.
- 8.7. The Headteacher on all such occasions will discuss the content of the allegation with the Local Authority Designated Officer, who is the Area Education Officer (AEO)
- 8.8. If the allegation made to a member of staff concerns the Headteacher, the person receiving the allegation will immediately inform the Chair of Governors who will consult as in 7.7 above, without notifying the Headteacher first.
- 8.9. The school will follow the Surrey procedures for managing allegations against staff. Under no circumstances will we send a child home, pending such an investigation, unless this advice is given exceptionally, as a result of a consultation with the AEO.
- 8.10. Suspension of the member of staff, excluding the Headteacher, against whom an allegation has been made, needs careful consideration, and the Headteacher will seek the advice of the AEO and Personnel Consultant in making this decision.
- 8.11. In the event of an allegation against the Headteacher, the decision to suspend will be made by the Chair of Governors with advice as in 7.8 above.
- 8.12. We have a procedure for managing the suspension of a contract for a community user or third party contractor in the event of an allegation arising in that context.

9. Whistle-blowing (See Whistleblowing Policy)

- 9.1. We recognise that children cannot be expected to raise concerns in an environment where staff fail to do so
- 9.2. All staff should be aware of their statutory duty to raise concerns, where they exist, about the management of child protection, which may include the attitude or actions of colleagues. If it becomes necessary to consult outside the school, they should speak in the first instance, to the AEO, following the Whistleblowing Policy.
- 9.3. The NSPCC whistleblowing helpline is available for staff who do not feel able to raise concerns regarding child protection failures internally. Staff can call: 0800 028 0285 – line is available from 8:00 AM to 8:00 PM, Monday to Friday and Email: help@nspcc.org.uk.

10. Physical Intervention (See Physical Contact, Touch and the Use of Physical Restraint for all Staff Working with Children and Young People Policy)

- 10.1. Our policy on physical intervention by staff is set out separately, and acknowledges that staff must only use physical intervention as a last resort, when a child is endangering him/herself or others, and that at all times it must be the minimal force necessary to prevent injury to another person.
- 10.2. Such events should be recorded and signed by a witness.
- 10.3. Staff who are likely to need to use physical intervention will be appropriately trained in the Positive Options technique.
- 10.4. We understand that physical intervention of a nature which causes injury or distress to a child may be considered under child protection or disciplinary procedures.
- 10.5. We recognise that touch is appropriate in the context of working with children, and all staff have been given "Safe Practice" guidance to ensure they are clear about their professional boundary.

11. Anti-Bullying (See Behaviour Management Policy)

Bullying is behaviour by an individual or group, repeated over time, that intentionally hurts another individual or group either physically or emotionally. Bullying can take many forms (for instance, cyberbullying via text messages or the internet) and is often motivated by prejudice against particular groups, for example on grounds of race, religion, gender, sexual orientation or because a child is adopted or has caring responsibilities' DfE 2014

- 11.1. Our policy on bullying is set out in a separate document and acknowledges that to allow or condone bullying may lead to consideration under child protection procedures. This includes all forms e.g. cyber, racist, homophobic and gender related bullying. We keep a record of known bullying incidents. All staff will be made aware that children with SEND and or differences/perceived differences are more susceptible to being bullied/victims of child abuse. We keep a record of bullying incidents.

12. Racist Incidents (See Equality Policy)

- 12.1. Our policy on racist incidents is set out separately, and acknowledges that repeated racist incidents or a single serious incident may lead to consideration under child protection procedures. We keep a record of racist incidents.

13. Radicalisation and Extremism

- 13.1. The Prevent Duty for England and Wales (2015) under section 26 of the Counter-Terrorism and Security Act 2015 places a duty on education and other children's services to have due regard to the need to prevent people from being drawn into terrorism.
- 13.2. Since 2010, when the Government published the Prevent Strategy, there has been an awareness of the specific need to safeguard children, young people and families from violent extremism. There have been several occasions both locally and nationally in which extremist groups have attempted to radicalise vulnerable children and young people to hold extreme views including views justifying political, religious, sexist or racist violence, or to steer them into a rigid and narrow ideology that is intolerant of diversity and leaves them vulnerable to future radicalisation.
- 13.3. Blenheim High School values freedom of speech and the expression of beliefs / ideology as fundamental rights underpinning our society's values. Both students and teachers have the right to speak freely and voice their opinions. However, freedom comes with responsibility and free speech that is designed to manipulate the vulnerable or that leads to violence and harm of others goes against the moral principles in which freedom of speech is valued. Free speech is not an unqualified privilege; it is subject to laws and policies governing equality, human rights, community safety and community cohesion.

- 13.4. The current threat from terrorism in the United Kingdom may include the exploitation of vulnerable people, to involve them in terrorism or in activity in support of terrorism. The normalisation of extreme views may also make children and young people vulnerable to future manipulation and exploitation. Blenheim High School is clear that this exploitation and radicalisation should be viewed as a safeguarding concern.
- 13.5. Some children are at risk of being radicalised; adopting beliefs and engaging in activities which are harmful, criminal or dangerous.
- 13.6. Definitions of radicalisation and extremism, and indicators of vulnerability to radicalisation are in Appendix 4.
- 13.7. Blenheim High School seeks to protect children and young people against the messages of all violent extremism including, but not restricted to, those linked to Islamist ideology, or to Far Right / Neo Nazi / White Supremacist ideology, Irish Nationalist and Loyalist paramilitary groups, and extremist Animal Rights movements.
- 13.8. The school governors, the Head Teacher and the Designated Safeguarding Lead (DSL) will assess the level of risk within the school and put actions in place to reduce that risk. Risk assessment may include, the use of school premises by external agencies, anti-bullying policy and other issues specific to the school's profile, community and philosophy.
- 13.9. This will be reviewed as part of the annual "Audit of Statutory Duties and Associated Responsibilities" that is monitored by the local authority and the Surrey Safeguarding Children Board.
- 13.10. When any member of staff has concerns that a pupil may be at risk of radicalisation or involvement in terrorism, they should speak with the Headteacher and/ or to the DSL. They should then follow normal safeguarding procedures. If the matter is urgent then Surrey Police must be contacted by dialling 999. In non urgent cases where police advice is sought then dial 101. The Department of Education has also set up a dedicated telephone helpline for staff and governors to raise concerns around Prevent (020 7340 7264).
- 13.11. Numerous factors can contribute to and influence the range of behaviours that are defined as violent extremism, but most young people do not become involved in extremist action. For this reason the appropriate interventions in any particular case may not have any specific connection to the threat of radicalisation, for example they may address mental health, relationship or drug/alcohol issues.
- 13.12. Ensure all staff are aware of school guidance for their use of mobile technology and have discussed safeguarding issues around the use of mobile technologies and their associated risks. We are following the advice of PREVENT in relation to the use of 'Keywords'.
- 13.13. All staff receive WRAP training delivered by PREVENT team (Workshop Raising Awareness of PREVENT). Training Presentation, case studies and further information on PREVENT to be made available on school network. Students also have assemblies and workshop delivered by the PREVENT team in addition to topics being covered in RS/PSHCE as appropriate.

14. Domestic Abuse

- 14.1. Domestic abuse represents one quarter of all violent crime. It is actual or threatened physical, emotional, psychological or sexual abuse. It involves the use of power and control by one person over another. It occurs regardless of race, ethnicity, gender, class, sexuality, age, religion, mental or physical ability. Domestic abuse can also involve other types of abuse.
- 14.2. We use the term domestic abuse to reflect that a number of abusive and controlling behaviours are involved beyond violence.
- 14.3. Slapping, punching, kicking, bruising, rape, ridicule, constant criticism, threats, manipulation, sleep deprivation, social isolation, and other controlling behaviours all count as abuse.
- 14.4. The signs and symptoms of a child suffering or witnessing domestic abuse are similar to other forms of abuse or neglect. (See Appendix 1)

- 14.5. Through PSHE students to be made aware of what is a healthy relationship and the signs and symptoms of an unhealthy relationship (
- 14.6. Referrals will be made to Domestic Abuse Outreach Worker to support students in line with their referral system.
- 14.7. Living in a home where domestic abuse takes place is harmful to children and can have a serious impact on their behaviour, wellbeing and understanding of healthy, positive relationships. Children who witness domestic abuse are at risk of significant harm and staff are alert to the signs and symptoms of a child suffering or witnessing domestic abuse (See Appendix 5).

15. Child Sexual Exploitation (CSE)

Child Sexual Exploitation is a form of child abuse which involves children and young people (male and female, of a range of ethnic origins and ages, in some cases as young as 10) receiving something in exchange for sexual activity' (DfE 2012)

- 15.1. Any concerns that a child is being or is at risk of being sexually exploited should be passed without delay to the DSL. Blenheim High School is aware there is a clear link between regular school absence/truancy and CSE. Staff should consider a child to be at potential CSE risk in the case of regular school absence/truancy and make reasonable enquiries with the child and parents to assess this risk.
- 15.2. Blenheim High School has its own additional Risk Assessment tool that is used in addition if there are any concerns regarding CSE.
- 15.3. A spreadsheet is also used to highlight children at risk of CSE through concerns raised through Social Media use for example.
- 15.4. In all cases if the tool identified any level of concern (green, amber or red) the DSL should contact their local Referral, Intervention and Assessment team and email the completed CSE Screening Tool along with a Multi-Agency Referral Form (MARF). If a child is in immediate danger the police should be called on 999.
- 15.5. Blenheim High School is aware that a child often is not able to recognise the coercive nature of the abuse and does not see themselves as a victim. As a consequence the child may resent what they perceive as interference by staff. However, staff must act on their concerns as they would for any other type of abuse.
- 15.6. Blenheim High School includes the risks of sexual exploitation in the PSHE and SRE curriculum. Pupils will be informed of the grooming process and how to protect themselves from people who may potentially be intent on causing harm. They will be supported in terms of recognising and assessing risk in relation to CSE, including online, and knowing how and where to get help.
- 15.7. All staff are given hard copies in addition with information on CSE Indicators to keep in their diaries for reference.

16. Female Genital Mutilation (FGM)

'FGM' is a procedure where the female genital organs are injured or changed and there is no medical reason for this. It is frequently a very traumatic and violent act for the victim and can cause harm in many ways. The practice can cause severe pain and they may be immediate and/or long term health consequences including mental health problems, difficulties in childbirth causing danger to the child and mother and/or death' HGM Government 2016

- 16.1. Female Genital Mutilation (FGM) is illegal in England and Wales under the FGM Act (2003). It is a form of child abuse and violence against women. A mandatory reporting duty requires teachers to report 'known' cases of FGM in under 18s, which are identified in the course of their professional work, to the police².
- 16.2. The duty applies to all persons in Blenheim High School who is employed or engaged to carry out 'teaching work' in the school, whether or not they have qualified teacher status. The duty applies to the individual who becomes aware of the case to make a report. It should not be transferred to the Designated Safeguarding Lead, however the DSL should be informed.
- 16.3. If a teacher is informed by a girl under 18 that an act of FGM has been carried out on her or a teacher observes physical signs which appear to show that an act of FGM has been carried out on a girl under 18 and they have no reason to believe the act was necessary for the girl's physical or mental health or for purposes connected with labour or birth, the teacher should personally make a report to the police force in which the girl resides by calling 101. The report should be made by the close of the next working day.
- 16.4. School staff are trained to be aware of risk indicators of FGM which are set out in Appendix 4. Concerns about FGM outside of the mandatory reporting duty should be reported as per XXX School's child protection procedures. Staff should be particularly alert to suspicions or concerns expressed by female pupils about going on a long holiday during the summer vacation period. There should also be consideration of potential risk to other girls in the family and practicing community.
- 16.5. Where there is a risk to life or likelihood of serious immediate harm the teacher should report the case immediately to the police, including dialling 999 if appropriate.
- 16.6. There are no circumstances in which a teacher or other member of staff should examine a girl.
- 16.7. All staff have hard and online copies of Indicators of FGM for quick reference.

17. Forced Marriage

'A forced marriage is where one or both people do not (or in the case of people with learning difficulties, cannot) consent to the marriage and pressure or abuse is used.'

The pressure put on people to marry against their will can be physical (including threats, actual physical violence and sexual violence) or emotional and psychological (for example when someone is made to feel like they are bringing shame to the family. Financial abuse (taking your wages or not giving you any money) can also be a factor. DfE 2014

- 17.1. A forced marriage is a marriage in which one or both people do not (or in cases of people with learning disabilities cannot) consent to the marriage but are coerced into it. Coercion may include physical, psychological, financial, sexual and emotional pressure. It may also involve physical or sexual violence and abuse.
- 17.2. Forced marriage is an appalling and indefensible practice and is recognised in the UK as a form of violence against women and men, domestic/child abuse and a serious abuse of human rights. Since June 2014 forcing someone to marry has become a criminal offence in England and Wales under the Anti-Social Behaviour, Crime and Policing Act 2014.

² <https://www.gov.uk/government/publications/mandatory-reporting-of-female-genital-mutilation-procedural-information>

17.3. A forced marriage is not the same as an arranged marriage which is common in several cultures. The families of both spouses take a leading role in arranging the marriage but the choice of whether or not to accept the arrangement remains with the prospective spouses.

17.4. School staff should never attempt to intervene directly as a school or through a third party. Contact should be made with the contact centre or the Forced Marriage Unit 200 7008 0151.

18. Honour-based Violence

'The terms 'honour crime' or 'honour based violence' or 'izzat' embrace a variety of crimes of violence (mainly but not exclusively against women) including assault, imprisonment and murder where the person is being punished by their family and community. They are being punished for actually, or allegedly, undermining that the family and community believes to be the correct code of behaviour. HM Government, 2014.

18.1. Honour based violence (HBV) can be described as a collection of practices, which are used to control behaviour within families or other social groups to protect perceived cultural and religious beliefs and/or honour. Such violence can occur when perpetrators perceive that a relative has shamed the family and/or community by breaking their honour code.

18.2. Honour based violence might be committed against people who;

- 18.2.2. become involved with a boyfriend or girlfriend from a different culture or religion;
- 18.2.3. want to get out of an arranged marriage;
- 18.2.4. want to get out of a forced marriage;
- 18.2.5. wear clothes or take part in activities that might not be considered traditional within a particular culture.

18.3. It is a violation of human rights and may be a form of domestic and/or sexual abuse. There is no, and cannot be, honour or justification for abusing the human rights of others.

19. One Chance Rule

19.1. All staff are aware of the 'One Chance' Rule' in relation to forced marriage, FGM and HBV. Staff recognise they may only have one chance' to speak to a pupil who is a potential victim and have just one chance to save a life.

19.2. Blenheim High School is aware that if the victim is not offered support following disclosure that the 'One Chance' opportunity may be lost. Therefore, all staff are aware of their responsibilities and obligations when they become aware of potential forced marriage, FGM and HBV cases.

20. Prevention of Harm

20.1. We recognise that the school plays a significant part in the prevention of harm to our students by providing students with good lines of communication with trusted adults, supportive friends and an ethos of protection.

20.2. The school community will therefore:

- 20.2.2. Work to establish and maintain an ethos where children feel secure and are encouraged to talk and are always listened to.
- 20.2.3. Ensure that all children know there is an adult in the school whom they can approach if they are worried or in difficulty.

20.3. Include across the curriculum, including PSHCE, opportunities which equip children with the skills they need to stay safe from harm and to know to whom they should turn for help. This policy also links to our policies on:

- 20.4. Behaviour and Management Whistleblowing
- 20.5. Health, Welfare & Safety
- 20.6. Discipline and Capability
- 20.7. Attendance
- 20.8. Medical Needs including Intimate Care
- 20.9. Substance Misuse Sex and Relationships Education
- 20.10. Physical Contact, Touch and the use of Physical Restraint
- 20.11. E-Safety
- 20.12. Recruitment, Retention and Staff Appointments

21. Private Fostering Arrangements

- 21.1. A private fostering arrangement occurs when someone other than a parent or close relative cares for a child for a period of 28 days or more, with the agreement of the child's parents. It applies to children under the age of 16 or 18 if the child is disabled. Children looked after by the local authority or who are placed in residential schools, children's homes or hospitals are not considered to be privately fostered.
- 21.2. Private fostering occurs in all cultures, including British culture and children may be privately fostered at any age.
- 21.3. Blenheim High School recognise that most privately fostered children remain safe and well but are aware that safeguarding concerns have been raised in some cases. Therefore, all staff are alert to possible safeguarding issues, including the possibility that the child has been trafficked into the country.
- 21.4. By law, a parent, private foster carer or other persons involved in making a private fostering arrangement must notify children's services as soon as possible. However, where a member of staff becomes aware that a pupil may be in a private fostering arrangement they will raise this with the DSL and the DSL will notify Surrey Children's Social Care of the circumstances.

22. Looked After Children

- 22.1. The most common reason for children becoming looked after is as a result of abuse and neglect. Blenheim High School ensures that staff have the necessary skills and understanding to keep looked after children safe. Appropriate staff have information about a child's looked after legal status and care arrangements, including the level of authority delegated to the carer by the authority looking after the child and contact arrangements with birth parents or those with parental responsibility.
- 22.2. The designated teacher for looked after children and the DSL have details of the child's social worker and the name and contact details of the Surrey County Council's virtual school head for children in care.
- 22.3. The designated teacher for looked after child works with the virtual school head to discuss how Pupil Premium Plus funding can be best used to support the progress of looked after children in the school and meet the needs in the child's personal education plan.

23. Children Missing Education

- 23.1. Attendance, absence and exclusions are closely monitored. A child going missing from education is a potential indicator of abuse and neglect, including sexual abuse and sexual exploitation.
- 23.2. The DSL and Attendance Lead will monitor unauthorised absences and take appropriate action including notifying the local authority particularly where children go missing on repeat occasions and/or are missing for periods during the school day in conjunction with 'Children Missing Education: Statutory Guidance for Local Authorities'³.

³ <https://www.gov.uk/government/publications/children-missing-education>

23.3. Staff must be alert to signs of children at risk of travelling to conflict zones, female genital mutilation and forced marriage.

23.4. The DSL and Attendance lead works closely with the Educational Welfare Officer.

24. Online Safety

24.1. Our pupils increasingly use electronic equipment on a daily basis to access the internet and share content and images via social media sites such as Facebook, Twitter, Instagram, Snapchat and Oovoo.

24.2. Unfortunately, some adults and other children use these technologies to harm children. The harm might range from sending hurtful or abusive texts or emails, to grooming and enticing children to engage in sexual behaviour such as webcam photography or face-to-face meetings. Pupils may also be distressed or harmed by accessing inappropriate material such as pornographic websites or those which promote extremist behaviour, criminal activity, suicide or eating disorders.

24.3. Blenheim High School has a detailed online safety policy which explains how we try to keep pupils safe in school and how we respond to online safety incidents (See flowchart, Appendix 7).

24.4. Pupils are taught about online safety throughout the curriculum and PSHCE and all staff receive online safety training which is regularly updated. The school online safety co-ordinator is Miss Donna Smith.

25. Peer on Peer Abuse

25.1. In most instances, the conduct of pupils towards each other will be covered by our behaviour policy. However, some allegations may be of such a serious nature that they may raise safeguarding concerns. Blenheim High School recognise that children are capable of abusing their peers. It will not be passed off as 'banter' or 'part of growing up'. The forms of peer on peer abuse are outlined below.

25.1.2. Domestic abuse – an incident or pattern of actual or threatened acts of physical, sexual, financial and/or emotional abuse, perpetrated by an adolescent against a current or former dating partner regardless of gender or sexuality. Students take part in a 'Healthy Relationship Programme'.

25.1.3. Child Sexual Exploitation – children under the age of 18 may be sexually abused in the context of exploitative relationships, contexts and situations by peers who are also under 18.

25.1.4. Harmful Sexual Behaviour – Children and young people presenting with sexual behaviours that are outside of developmentally 'normative' parameters and harmful to themselves and others (For more information, please see Appendix 2).

25.1.5. Serious Youth Violence – Any offence of most serious violence or weapon enabled crime, where the victim is aged 1-19' i.e. murder, manslaughter, rape, wounding with intent and causing grievous bodily harm. 'Youth violence' is defined in the same way, but also includes assault with injury offences.

25.2. The term peer-on-peer abuse can refer to all of these definitions and a child may experience one or multiple facets of abuse at any one time. Therefore, our response will cut across these definitions and capture the complex web of their experiences.

25.3. There are also different gender issues that can be prevalent when dealing with peer on peer abuse (i.e. girls being sexually touched/assaulted or boys being subjected to initiation/hazing type violence).

25.4. Blenheim High School aims to reduce the likelihood of peer on peer abuse through;

- 25.4.2. the established ethos of respect, friendship, courtesy and kindness;
 - 25.4.3. high expectations of behaviour;
 - 25.4.4. clear consequences for unacceptable behaviour;
 - 25.4.5. providing a developmentally appropriate PSHE curriculum which develops pupils' understanding of healthy relationships, acceptable behaviour, consent and keeping themselves safe;
 - 25.4.6. systems for any pupil to raise concerns with staff, knowing that they will be listened to, valued and believed;
 - 25.4.7. robust risk assessments and providing targeted work for pupils identified as being a potential risk to other pupils and those identified as being at risk.
- 25.5. Research indicates that young people rarely disclose peer on peer abuse and that if they do, it is likely to be to their friends. Therefore, Blenheim High School educates pupils in how to support their friends if they are concerned about them, that they should talk to a trusted adult in the school and what services they can contact for further advice.
- 25.6. Any concerns, disclosures or allegations of peer on peer abuse in any form should be referred to the DSL using Blenheim High School's child protection procedures as set out in this policy. Where a concern regarding peer on peer abuse has been disclosed to the DSL(s), advice and guidance will be sought from Children Social Care and where it is clear a crime has been committed or there is a risk of crime being committed the Police will be contacted.
- 25.7. Working with external agencies the school will respond to the unacceptable behaviour. If a pupil's behaviour negatively impacts on the safety and welfare of other pupils then safeguards will be put in place to promote the well-being of the pupils affected and the victim and perpetrator will be provided with support.

26. Youth produced sexual imagery (sexting) 4

- 26.1. The practice of children sharing images and videos via text message, email, social media or mobile messaging apps has become commonplace. However, this online technology has also given children the opportunity to produce and distribute sexual imagery in the form of photos and videos. Such imagery involving anyone under the age of 18 is illegal.
- 26.2. Youth produced sexual imagery refers to both images and videos where;
- 26.2.2. A person under the age of 18 creates and shares sexual imagery of themselves with a peer under the age of 18.
 - 26.2.3. A person under the age of 18 shares sexual imagery created by another person under the age of 18 with a peer under the age of 18 or an adult.
 - 26.2.4. A person under the age of 18 is in possession of sexual imagery created by another person under the age of 18.
- 26.3. All incidents of this nature should be treated as a safeguarding concern and in line with the UKCCIS guidance 'Sexting in schools and colleges: responding to incidents and safeguarding young people'⁵.
- 26.4. Cases where sexual imagery of people under 18 has been shared by adults and where sexual imagery of a person of any age has been shared by an adult to a child is child sexual abuse and should be responded to accordingly.
- 26.5. If a member of staff becomes aware of an incident involving youth produced sexual imagery they should follow the child protection procedures and refer to the DSL as soon as possible. The member of staff should confiscate the device involved and set it to flight mode or, if this is not possible, turn it off. Staff should not view, copy or print the youth produced sexual imagery.

⁴ Youth refers to anyone under the age of 18.

⁵https://www.gov.uk/government/uploads/system/uploads/attachment_data/file/545997/Sexting_in_schools_and_colleges_UKCCIS__4_.pdf

- 26.6. The DSL should hold an initial review meeting with appropriate school staff and subsequent interviews with the children involved. Parents should be informed at an early stage and involved in the process unless there is reason to believe that involving parents would put the child at risk of harm. At any point in the process if there is concern a young person has been harmed or is at risk of harm a referral should be made to Children's Social Care or the Police as appropriate.
- 26.7. Immediate referral at the initial review stage will be made to Children's Social Care/Police if;
- 26.7.2. The incident involves an adult;
 - 26.7.3. There is good reason to believe that a young person has been coerced, blackmailed or groomed or if there are concerns about their capacity to consent;
 - 26.7.4. What you know about the imagery suggests the content depicts sexual acts which are unusual for the child's development stage or are violent;
 - 26.7.5. The imagery involves sexual acts;
 - 26.7.6. The imagery involves anyone aged 12 or under;
 - 26.7.7. There is reason to believe a child is at immediate risk of harm owing to the sharing of the imagery, for example the child is presenting as suicidal or self-harming.
- 26.8. If none of the above apply then the DSL will use their professional judgement to assess the risk to pupils involved and may decide, with input from the Headteacher, to respond to the incident without escalation to Children's Social Care or the police.
- 26.9. In applying judgement the DSL will consider if;
- 26.9.2. there is a significant age difference between the sender/receiver;
 - 26.9.3. there is any coercion or encouragement beyond the sender/receiver;
 - 26.9.4. the imagery was shared and received with the knowledge of the child in the imagery;
 - 26.9.5. the child is more vulnerable than usual i.e. at risk;
 - 26.9.6. there is a significant impact on the children involved;
 - 26.9.7. the image is of a severe or extreme nature;
 - 26.9.8. the child involved understands consent;
 - 26.9.9. the situation is isolated or if the image been more widely distributed;
 - 26.9.10. there other circumstances relating to either the sender or recipient that may add cause for concern i.e. difficult home circumstances;
 - 26.9.11. the children have been involved in incidents relating to youth produced imagery before.
- 26.10. If any of these circumstances are present the situation will be escalated according to our child protection procedures, including reporting to the police or children's social care. Otherwise, the situation will be managed within the school.
- 26.11. The DSL will record all incidents of youth produced sexual imagery, including both the actions taken, actions not taken, reasons for doing so and the resolution in line with safeguarding recording procedures.

27. Health & Safety (See Health and Safety Policy)

- 27.1. Our Health & Safety policy, set out in a separate document, reflects the consideration we give to the protection of our children both physically within the school environment, and for example in relation to internet use, and when away from the school when undertaking school trips and visits.

28. Monitoring and Evaluation

- 28.1. Our Child Protection Policy and Procedures will be monitored and evaluated by:
- Governing Body visits to the school
 - Informal discussions with children and staff
 - Pupil surveys and questionnaires
 - Scrutiny of Attendance data
 - Scrutiny of range of risk assessments
 - Scrutiny of GB minutes
 - Logs of bullying/racist/behaviour incidents for SLT and GB to monitor

- Review of parental concerns and parent questionnaires

28.2. This policy also links to our policies on:

<ul style="list-style-type: none"> • Behaviour, • Staff Behaviour Policy / Code of Conduct • Whistleblowing, • Anti-bullying, • Health & Safety • Allegations against staff, • Parental concerns, • Attendance, • Curriculum • PSHE • Teaching and Learning • Administration of medicines 	<ul style="list-style-type: none"> • Drug Education • Sex and Relationships Education • Physical intervention • E-Safety, including staff use of mobile phones • Risk Assessment • Recruitment and Selection • Child Sexual Exploitation • Intimate Care • Radicalisation and Extremism
---	--

APPENDIX 1: Recognising signs of Child Abuse

The following is a list of signs and symptoms that may be consistent with abuse; some children can exhibit one or more of these signs for other reasons. However, if there are concerns about a child displaying any of these indicators, discussions should be held as soon as possible with the CPLO.

Categories of Abuse:

- Physical Abuse
- Emotional Abuse (including Domestic Abuse)
- Sexual Abuse
- Neglect

Signs of Abuse in Children:

The following non-specific signs may indicate something is wrong:

- Significant change in behaviour
- Extreme anger or sadness
- Aggressive and attention-seeking behaviour
- Suspicious bruises with unsatisfactory explanations
- Lack of self-esteem
- Self-injury
- Depression
- Age inappropriate sexual behaviour
- Child Sexual Exploitation.

Risk Indicators

The factors described in this section are frequently found in cases of child abuse. Their presence is not proof that abuse has occurred, but:

- Must be regarded as indicators of the possibility of significant harm
- Justifies the need for careful assessment and discussion with designated / named / lead person, manager, (or in the absence of all those individuals, an experienced colleague)
- May require consultation with and / or referral to Children's Services

The absence of such indicators does not mean that abuse or neglect has not occurred.

In an abusive relationship the child may:

- Appear frightened of the parent/s
- Act in a way that is inappropriate to her/his age and development (though full account needs to be taken of different patterns of development and different ethnic groups)

The parent or carer may:

- Persistently avoid child health promotion services and treatment of the child's episodic illnesses
- Have unrealistic expectations of the child
- Frequently complain about/to the child and may fail to provide attention or praise (high criticism/low warmth environment)
- Be absent or misusing substances
- Persistently refuse to allow access on home visits
- Be involved in domestic abuse

Staff should be aware of the potential risk to children when individuals, previously known or suspected to have abused children, move into the household.

Recognising Physical Abuse

The following are often regarded as indicators of concern:

- An explanation which is inconsistent with an injury
- Several different explanations provided for an injury
- Unexplained delay in seeking treatment
- The parents/carers are uninterested or undisturbed by an accident or injury
- Parents are absent without good reason when their child is presented for treatment
- Repeated presentation of minor injuries (which may represent a “cry for help” and if ignored could lead to a more serious injury)
- Family use of different doctors and A&E departments
- Reluctance to give information or mention previous injuries

Bruising

Children can have accidental bruising, but the following must be considered as non accidental unless there is evidence or an adequate explanation provided:

- Any bruising to a pre-crawling or pre-walking baby
- Bruising in or around the mouth, particularly in small babies which may indicate force feeding
- Two simultaneous bruised eyes, without bruising to the forehead, (rarely accidental, though a single bruised eye can be accidental or abusive)
- Repeated or multiple bruising on the head or on sites unlikely to be injured accidentally
- Variation in colour possibly indicating injuries caused at different times
- The outline of an object used e.g. belt marks, hand prints or a hair brush
- Bruising or tears around, or behind, the earlobe/s indicating injury by pulling or twisting
- Bruising around the face
- Grasp marks on small children
- Bruising on the arms, buttocks and thighs may be an indicator of sexual abuse

Bite Marks

Bite marks can leave clear impressions of the teeth. Human bite marks are oval or crescent shaped. Those over 3 cm in diameter are more likely to have been caused by an adult or older child.

A medical opinion should be sought where there is any doubt over the origin of the bite.

Burns and Scalds

It can be difficult to distinguish between accidental and non-accidental burns and scalds, and will always require experienced medical opinion. Any burn with a clear outline may be suspicious e.g.:

- Circular burns from cigarettes (but may be friction burns if along the bony protuberance of the spine)
- Linear burns from hot metal rods or electrical fire elements
- Burns of uniform depth over a large area
- Scalds that have a line indicating immersion or poured liquid (a child getting into hot water is his/her own accord will struggle to get out and cause splash marks)
- Old scars indicating previous burns/scalds which did not have appropriate treatment or adequate explanation

Scalds to the buttocks of a small child, particularly in the absence of burns to the feet, are indicative of dipping into a hot liquid or bath.

Fractures

Fractures may cause pain, swelling and discolouration over a bone or joint.

Non-mobile children rarely sustain fractures.

There are grounds for concern if:

- The history provided is vague, non-existent or inconsistent with the fracture type
- There are associated old fractures
- Medical attention is sought after a period of delay when the fracture has caused symptoms such as swelling, pain or loss of movement
- There is an unexplained fracture in the first year of life

Scars

A large number of scars or scars of different sizes or ages, or on different parts of the body, may suggest abuse.

Recognising Emotional Abuse

Emotional abuse may be difficult to recognise, as the signs are usually behavioural rather than physical. The manifestations of emotional abuse might also indicate the presence of other kinds of abuse.

The indicators of emotional abuse are often also associated with other forms of abuse.

The following may be indicators of emotional abuse:

- Developmental delay
- Abnormal attachment between a child and parent/carer e.g. anxious, indiscriminate/failure to attach.
- Aggressive behaviour towards others
- Scapegoated within the family
- Frozen watchfulness, particularly in pre-school children
- Low self-esteem and lack of confidence
- Withdrawn or seen as a “loner” – difficulty relating to others

Recognising Signs of Sexual Abuse

Boys and girls of all ages may be sexually abused and are frequently scared to say anything due to guilt and/or fear. This is particularly difficult for a child to talk about and full account should be taken of the cultural sensitivities of any individual child/family.

Recognition can be difficult, unless the child discloses and is believed. There may be no physical signs and indications are likely to be emotional/behavioural.

Some behavioural indicators associated with this form of abuse are:

- Inappropriate sexualised conduct
- Sexually explicit behaviour, play or conversation, inappropriate to the child's age
- Continual and inappropriate or excessive masturbation
- Self-harm (including eating disorder), self-mutilation and suicide attempts
- Involvement in prostitution or indiscriminate choice of sexual partners
- An anxious unwillingness to remove clothes e.g. for sports events (but this may be related to cultural norms or physical difficulties)

Some physical indicators associated with this form of abuse are:

- Pain or itching of genital area
- Blood on underclothes
- Pregnancy in a younger girl where the identity of the father is not disclosed
- Physical symptoms such as injuries to the genital or anal area, bruising to buttocks, abdomen and thighs, sexually transmitted disease, presence of semen on vagina, anus, external genitalia or clothing.

Sexual Abuse by Young People

The boundary between what is abusive and what is part of normal childhood or youthful experimentation can be blurred. The determination of whether behaviour is developmental, inappropriate or abusive will hinge around the related concepts of true consent, power imbalance and exploitation. This may include children and young people who exhibit a range of sexually problematic behaviour such as indecent exposure, obscene telephone calls, fetishism, bestiality and sexual abuse against adults, peers or children.

Developmental Sexual Activity encompasses those actions that are to be expected from children and young people as they move from infancy through to an adult understanding of their physical, emotional and behavioural relationships with each other. Such sexual activity is essentially information gathering and experience testing. It is characterised by mutuality and of the seeking of consent.

Inappropriate Sexual Behaviour can be inappropriate socially, inappropriate to development, or both. In considering whether behaviour fits into this category, it is important to consider what negative effects it has on any of the parties involved and what concerns it raises about a child or young person. It should be recognised that some actions may be motivated by information seeking, but still cause significant upset, confusion, worry, physical damage, etc. It may also be that the behaviour is “acting out” which may derive from other sexual situations to which the child or young person has been exposed.

If an act appears to have been inappropriate, there may still be a need for some form of behaviour management or intervention. For some children, educative inputs may be enough to address the behaviour.

Abusive sexual activity included any behaviour involving coercion, threats, aggression together with secrecy, or where one participant relies on an unequal power base.

Assessment

In order to more fully determine the nature of the incident the following factors should be given consideration. The presence of exploitation in terms of:

- **Equality** – consider differentials of physical, cognitive and emotional development, power and control and authority, passive and assertive tendencies
- **Consent** – agreement including all the following:
 - Understanding that is proposed based on age, maturity, development level, functioning and experience
 - Knowledge of society’s standards for what is being proposed
 - Awareness of potential consequences and alternatives
 - Assumption that agreements or disagreements will be respected equally
 - Voluntary decision
 - Mental competence
- **Coercion** – the young perpetrator who abuses may use techniques like bribing, manipulation and emotional threats of secondary gains and losses that is loss of love, friendship, etc. Some may use physical force, brutality or the threat of these regardless of victim resistance.

In evaluating sexual behaviour of children and young people, the above information should be used only as a guide. Further information and advice is available in the Surrey multi-agency protocol “Working with Sexually Active Young People” available at www.surreycc.gov.uk/safeguarding, by choosing Safeguarding Children – Protocols and Guidance for Professionals. Assessment, Consultation and Therapy (ACT) 01306 745310 can also assist professionals in identifying sexual behaviour of concern in children and adolescents.

Recognising Neglect

Evidence of neglect is built up over a period of time and can cover different aspects of parenting. Indicators include:

- Failure by parents or carers to meet the basic essential needs e.g. adequate food, clothes, warmth, hygiene and medical care
- A child seen to be listless, apathetic and unresponsive with no apparent medical cause
- Failure of child to grow within normal expected pattern, with accompanying weight loss
- Child thrives away from home environment
- Child frequently absent from school
- Child left with adults who are intoxicated or violent
- Child abandoned or left alone for excessive periods

Child Sexual Exploitation

The following list of indicators is not exhaustive or definitive but it does highlight common signs which can assist professionals in identifying children or young people who may be victims of sexual exploitation.

Signs include:

- underage sexual activity
- inappropriate sexual or sexualised behaviour
- sexually risky behaviour, 'swapping' sex
- repeat sexually transmitted infections
- in girls, repeat pregnancy, abortions, miscarriage
- receiving unexplained gifts or gifts from unknown sources
- having multiple mobile phones and worrying about losing contact via mobile
- having unaffordable new things (clothes, mobile) or expensive habits (alcohol, drugs)
- changes in the way they dress
- going to hotels or other unusual locations to meet friends
- seen at known places of concern
- moving around the country, appearing in new towns or cities, not knowing where they are
- getting in/out of different cars driven by unknown adults
- having older boyfriends or girlfriends
- contact with known perpetrators
- involved in abusive relationships, intimidated and fearful of certain people or situations
- hanging out with groups of older people, or anti-social groups, or with other vulnerable peers
- associating with other young people involved in sexual exploitation
- recruiting other young people to exploitative situations
- truancy, exclusion, disengagement with school, opting out of education altogether
- unexplained changes in behaviour or personality (chaotic, aggressive, sexual)
- mood swings, volatile behaviour, emotional distress
- self-harming, suicidal thoughts, suicide attempts, overdosing, eating disorders
- drug or alcohol misuse
- getting involved in crime
- police involvement, police records
- involved in gangs, gang fights, gang membership
- injuries from physical assault, physical restraint, sexual assault.

APPENDIX 2

Forced Marriage (FM)

This is an entirely separate issue from arranged marriage. It is a human rights abuse and falls within the Crown Prosecution Service definition of domestic violence. Young men and women can be at risk in affected ethnic groups. Whistle-blowing may come from younger siblings. Other indicators may be detected by changes in adolescent behaviours. Never attempt to intervene directly as a school or through a third party. Always call either the Contact Centre or the Forced Marriage Unit 020 7008 0151.

Female Genital Mutilation (FGM)

It is essential that staff are aware of FGM practices and the need to look for signs, symptoms and other indicators of FGM.

What is FGM?

It involves procedures that intentionally alter/injure the female genital organs for non-medical reasons. There are 4 types of procedure:

- Type 1 Clitoridectomy – partial/total removal of clitoris
- Type 2 Excision – partial/total removal of clitoris and labia minora
- Type 3 Infibulation entrance to vagina is narrowed by repositioning the inner/outer labia
- Type 4 all other procedures that may include: pricking, piercing, incising, cauterising and scraping the genital area.

Why is it carried out?

Belief that:

- FGM brings status/respect to the girl – social acceptance for marriage
- Preserves a girl's virginity
- Part of being a woman / rite of passage
- Upholds family honour
- Cleanses and purifies the girl
- Gives a sense of belonging to the community
- Fulfils a religious requirement
- Perpetuates a custom/tradition
- Helps girls be clean / hygienic
- Is cosmetically desirable
- Mistakenly believed to make childbirth easier

Is FGM legal?

FGM is internationally recognised as a violation of human rights of girls and women. It is **illegal** in most countries including the UK.

Circumstances and occurrences that may point to FGM happening are:

- Child talking about getting ready for a special ceremony
- Family taking a long trip abroad
- Child's family being from one of the 'at risk' communities for FGM (Kenya, Somalia, Sudan, Sierra Leon, Egypt, Nigeria, Eritrea as well as non-African communities including Yemeni, Afghani, Kurdistan, Indonesia and Pakistan)
- Knowledge that the child's sibling has undergone FGM
- Child talks about going abroad to be 'cut' or to prepare for marriage

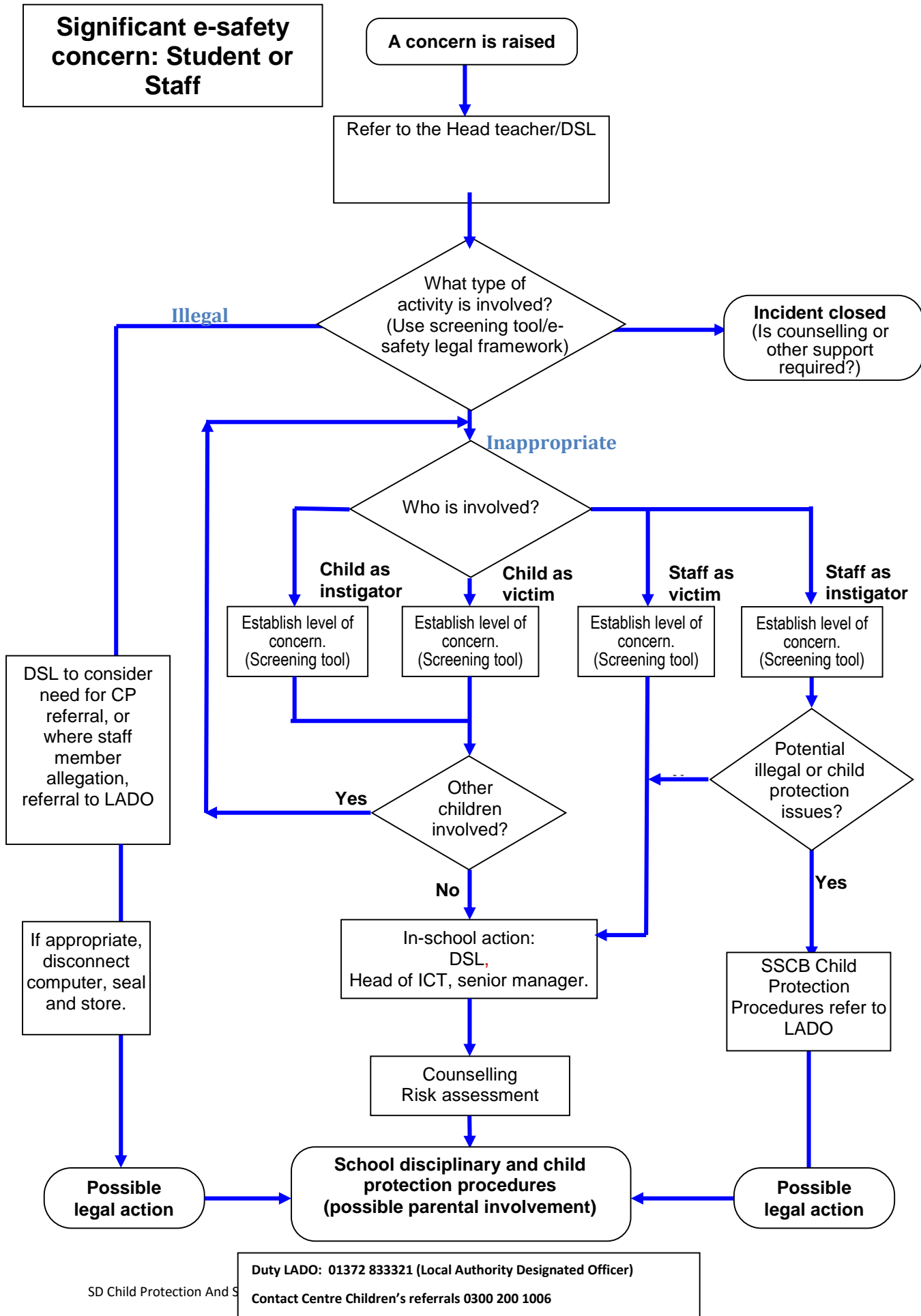
Signs that may indicate a child has undergone FGM:

- Prolonged absence from school and other activities
- Behaviour change on return from a holiday abroad, such as being withdrawn and appearing subdued
- Bladder or menstrual problems
- Finding it difficult to sit still and looking uncomfortable
- Complaining about pain between the legs
- Mentioning something somebody did to them that they are not allowed to talk about
- Secretive behaviour, including isolating themselves from the group
- Reluctance to take part in physical activity
- Repeated urinal tract infection
- Disclosure

The 'One Chance' rule

As with Forced Marriage there is the 'One Chance' rule. It is essential that settings /schools/colleges take action **without delay** and call the local referral, intervention and assessment services for NE.

APPENDIX 3



Appendix 4

INDICATORS OF VULNERABILITY TO RADICALISATION

1. Radicalisation refers to the process by which a person comes to support terrorism and forms of extremism leading to terrorism.
2. Extremism is defined by the Government in the Prevent Strategy as:
Vocal or active opposition to fundamental British values, including democracy, the rule of law, individual liberty and mutual respect and tolerance of different faiths and beliefs. We also include in our definition of extremism calls for the death of members of our armed forces, whether in this country or overseas.
3. Extremism is defined by the Crown Prosecution Service as:
The demonstration of unacceptable behaviour by using any means or medium to express views which:
 - Encourage, justify or glorify terrorist violence in furtherance of particular beliefs;
 - Seek to provoke others to terrorist acts;
 - Encourage other serious criminal activity or seek to provoke others to serious criminal acts; or
 - Foster hatred which might lead to inter-community violence in the UK.
4. There is no such thing as a “typical extremist”: those who become involved in extremist actions come from a range of backgrounds and experiences, and most individuals, even those who hold radical views, do not become involved in violent extremist activity.
5. Pupils may become susceptible to radicalisation through a range of social, personal and environmental factors - it is known that violent extremists exploit vulnerabilities in individuals to drive a wedge between them and their families and communities. It is vital that school staff are able to recognise those vulnerabilities.
6. Indicators of vulnerability include:
 - Identity Crisis – the student / pupil is distanced from their cultural / religious heritage and experiences discomfort about their place in society;
 - Personal Crisis – the student / pupil may be experiencing family tensions; a sense of isolation; and low self-esteem; they may have dissociated from their existing friendship group and become involved with a new and different group of friends; they may be searching for answers to questions about identity, faith and belonging;
 - Personal Circumstances – migration; local community tensions; and events affecting the student / pupil’s country or region of origin may contribute to a sense of grievance that is triggered by personal experience of racism or discrimination or aspects of Government policy;
 - Unmet Aspirations – the student / pupil may have perceptions of injustice; a feeling of failure; rejection of civic life;
 - Experiences of Criminality – which may include involvement with criminal groups, imprisonment, and poor resettlement / reintegration;
 - Special Educational Need – students may experience difficulties with social interaction, empathy with others, understanding the consequences of their actions and awareness of the motivations of others.
7. However, this list is not exhaustive, nor does it mean that all young people experiencing the above are at risk of radicalisation for the purposes of violent extremism.
8. More critical risk factors could include:
 - Being in contact with extremist recruiters;

- Accessing violent extremist websites, especially those with a social networking element;
- Possessing or accessing violent extremist literature;
- Using extremist narratives and a global ideology to explain personal disadvantage;
- Justifying the use of violence to solve societal issues;
- Joining or seeking to join extremist organisations; and
- Significant changes to appearance and / or behaviour;
- Experiencing a high level of social isolation resulting in issues of identity crisis and / or personal crisis.

The Department of Education guidance [The Prevent Duty](#) can be accessed via this link.

Appendix 5

Domestic Abuse

How does it affect children?

Children can be traumatised by seeing and hearing violence and abuse. They may also be directly targeted by the abuser or take on a protective role and get caught in the middle. In the long term this can lead to mental health issues such as depression, self harm and anxiety.

What are the signs to look out for?

Children affected by domestic abuse reflect their distress in a variety of ways. They may change their usual behaviour and become withdrawn, tired, start to wet the bed and have behavioural difficulties. They may not want to leave their house or may become reluctant to return. Others will excel, using their time in your care as a way to escape from their home life. None of these signs are exclusive to domestic abuse so when you are considering changes in behaviours and concerns about a child, think about whether domestic abuse may be a factor.

What should I do if I suspect a family is affected by domestic abuse?

To talk through your concerns call the Surrey Domestic Abuse Helpline on 01483 776822 or talk to your local outreach service.

East Surrey Domestic Abuse Services - Covering Reigate & Banstead, Mole Valley and Tandridge - 01737 771350

Your Sanctuary Outreach Service Covering Woking, Runnymede and Surrey Heath - 01483 776822

North Surrey Outreach Service - Covering Epsom & Ewell, Elmbridge and Spelthorne - 01932 260690

South West Surrey Outreach Service - Covering Guildford and Waverley - 01483 577392