



# Nursery Teacher

## Application Pack

Jubilee Academy Mossley,  
Walsall, West Midlands

# Contents

Jubilee Academy Mossley,  
Walsall, West Midlands

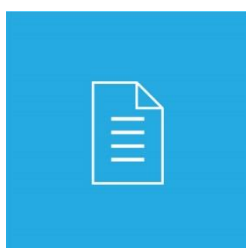


**01**

About Academy  
Transformation Trust

---

Page 3



**02**

Jubilee Academy  
Mossley  
Information

---

Page 4

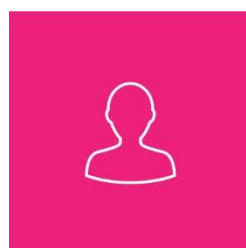


**03**

Job Description

---

Page 5 - 8



**04**

Person  
Specification

---

Page 9 - 12



**05**

How to apply

---

Page 13

Improving Education **Together.**



# 01. About Academy Transformation Trust

## We're on a mission

Our mission is to provide the very best education for all pupils and the highest level of support for our staff to ensure every pupil leaves our academies with everything they need to reach their full potential.

## These are the things we hold dear

### Transparency

As a charity founded on strong ethical practices, Academy Transformation Trust takes pride in being open, honest and crystal clear in everything we do.

### Innovation

We are constantly striving to do all we can to make education the best it possibly can be. We are brave in our actions and do everything we can to have a positive impact on whole child development.

### Collaboration

We believe the future of education relies upon effective collaboration between academies, and better collaboration between academies and their local communities.

### Ambition

We are determined to improve education nationwide by encouraging collaboration and giving academies everything they need to realise their full potential.

We believe every child matters and deserves a first class education.

Our team knows first-hand how to make education better for schools, pupils and their teachers.

For us, the future of UK education relies upon schools working closely together to share best practices, giving every child the best chance in life. We set up ATT to make this vision a reality.

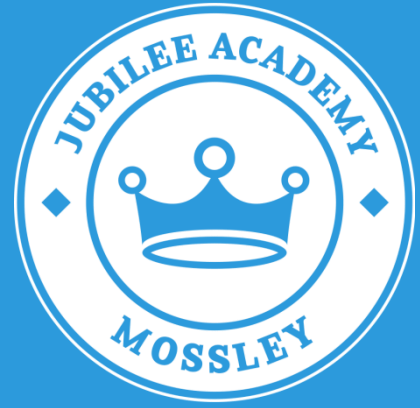
As a not for profit trust, we work with our growing family of primary and secondary academies, and further education providers in the Midlands, East of England and South East.

## 02. Jubilee Academy Mossley

# Information

Jubilee Academy Mossley strongly believe that every child is important and deserves a first class education. The academy believe everyone has hidden potential to be uncovered and nurtured.

Situated in Walsall, this academy for 3 to 11 year olds became part of the Academy Transformation Trust family on 1st August 2012. The academy are extremely proud of each of their children – aiming to inspire every child in the academy to succeed and seeking to provide them with the opportunities to develop to their full potential. Staff take pride in offering a varied, enriched curriculum and in the confidence and achievements of our pupils.



The children who attend Jubilee Academy Mossley leave us in Year 6 with the skills and positive thinking needed to achieve their ambitions and to lead happy, successful lives. Early year's provision is part time in Nursery and full time in the Reception class. We are in discussions with the local authority to take on board the adjoining Bloxwich Children's Centre to further develop the early year's provision.

The academy offers an exciting, hands-on learning experience that is tailored to the needs of all our children. You will often find them using a broad range of devices including: iPad, laptops, cameras, audio devices and audience response systems. The most recent OFSTED inspection rated the academy as "Good" in all areas. This reflects the hard work of all our staff and is a positive step on our journey to be rated "Outstanding". The inspectors were highly impressed with all that our children, parents, staff, Governors and our sponsor have achieved.

The academy is similar in size to an average primary school, but with a higher than average proportion of pupils eligible for additional support from pupil premium. A higher than average proportion of pupils who are eligible for free school meals attend the academy, and the proportion of SEN students is in line with the average. Most pupils are of white British heritage, and almost all pupils speak English as their first language.

Results at Jubilee Academy Mossley have improved in all areas.



## 03. Job Description

### Teacher of Nursery – Primary Academy

The successful candidate will be expected to undertake duties in line with the professional teacher standards for qualified teachers and work towards meeting these standards.

#### Key responsibilities are:

- > to embrace our vision
- > to establish a culture that promotes excellence, equality, high expectations and aspirations of all pupils in our care
- > to engage with a culture and systems which ensure that safeguarding and child protection are of the highest priority
- > to engage with and implement all policies and procedures, including providing feedback for continuous improvement as appropriate
- > to create and deliver lessons that are at least Good, and strive towards Outstanding
- > to ensure that pupils are offered world class 21st century learning opportunities
- > to support the development of our family of academies
- > to undertake adhoc duties as required.

# Specific Responsibilities

## Pupils

The successful candidate will:

- > ensure pupils are always engaged in safe and healthy educational activities in an environment that is rich and colourful and designed to promote enjoyment and excitement in learning
- > identify pupils who require interventions in collaboration with colleagues
- > create and deliver tailored lessons that lead to improved outcomes for pupils
- > engage and build effective working relationships with pupils
- > plan and deliver opportunities to develop the social, emotional and cultural aspects of pupils' learning
- > organise and manage groups or individual pupils; ensuring differentiation of learning needs, reflecting all abilities
- > ensure the academy's Behaviour Policy is implemented effectively.

## Ethos

The successful candidate will maintain:

- > our vision to aspire to create a learning community built and sustained by a culture of citizenship, respect, trust, honesty, well-being and financial independence
- > an environment where all members of the academy and its community actively demonstrate their care and concern for everyone and fulfil the requirements of our shared vision
- > high morale, with the Principal setting an example in terms of professional standards and leadership.



## 04. Person Specification

### Nursery Teacher – Primary Academy

#### Key responsibilities

At the academy, we strive to achieve excellence and to be judged an outstanding academy. In order to maintain the high standards and build on success of the academy, you will need to:

- > champion a culture of high expectations and aspiration so that all pupils are able to achieve their potential and the academy secures high attainment for all
- > Support the continued transformation of the quality of teaching and learning so that pupils consistently make progress which is better than pupils nationally
- > Ensure to demonstrate a level of commitment and respect to pupils, with an unshakable belief in their entitlement to a high quality education, whatever their circumstances and ability
- > Utilise new and emerging technologies to enrich and extend the learning experiences of all pupils

	Essential	Desirable
Professional qualifications and learning	<ul style="list-style-type: none"><li>• has qualified teacher status</li><li>• has an undergraduate degree</li></ul>	<ul style="list-style-type: none"><li>• undergone safer recruitment training</li><li>• evidence of recent and relevant continuing professional development</li><li>• held variety of roles and responsibilities within a primary school/academy</li></ul>
Experience of	<ul style="list-style-type: none"><li>• being a 'good' classroom teacher</li><li>• working with children with a variety of needs</li><li>• linking with statutory agencies</li></ul>	<ul style="list-style-type: none"><li>• being an Outstanding classroom teacher</li></ul>

## 04. Person Specification

	Essential	Desirable
Safeguarding	<ul style="list-style-type: none"> <li>• displays commitment to the protection and safeguarding of children and young people</li> <li>• has up to date knowledge and understanding of relevant legislation and guidance in relation to working with, and the protection of, children and young people</li> <li>• will co-operate and work with relevant agencies to protect children</li> </ul>	<ul style="list-style-type: none"> <li>• holds relevant safeguarding training/qualifications</li> </ul>
Teaching and Learning	<ul style="list-style-type: none"> <li>• demonstrates excellent understanding of the principles of effective teaching and learning</li> <li>• is an outstanding classroom practitioner within primary education</li> <li>• has excellent current knowledge of all curriculum requirements and can implement, monitor and support these effectively</li> <li>• can articulate characteristics of outstanding teaching and learning for pupils of all abilities</li> <li>• has a successful, proven track record of monitoring, evaluating and improving the quality of teaching and learning</li> <li>• has an excellent understanding of assessment and how it can be used to improve pupil progress</li> <li>• has a track record of securing high standards and at least good progress for all pupils</li> <li>• has a track record that demonstrates the very best quality of teaching and learning for all pupil groups including SEN and vulnerable</li> <li>• has a proven track record in setting challenging targets, monitoring and evaluating effectively to challenge poor performance and celebrate success</li> </ul>	<ul style="list-style-type: none"> <li>• can effectively utilise and take a role in the development of new and emerging technologies to enhance and extend the learning of students</li> </ul>
Developing self and working with others	<ul style="list-style-type: none"> <li>• can develop and maintain effective strategies and procedures for intervention</li> <li>• can ensure effective planning, allocation, support in the delivery of interventions</li> <li>• can develop and maintain a culture of high expectations for self and for others</li> <li>• can review own practice, set personal targets and take responsibilities</li> </ul>	<ul style="list-style-type: none"> <li>•</li> </ul>



## 04. Person Specification

	Essential	Desirable
Developing self and working with others	<ul style="list-style-type: none"> <li>• can develop and maintain effective strategies and procedures for staff induction, professional development and performance review</li> <li>• can ensure effective planning, allocation, support and evaluation of work undertaken by teams and individuals, ensuring clear delegation of tasks and devolution of responsibilities</li> <li>• can develop and maintain a culture of high expectations for self and for others</li> <li>• can review own practice, set personal targets and take responsibility for personal development</li> <li>• can manage own workload to allow appropriate work/life balance</li> <li>• can maintain confidentiality</li> <li>• can articulate and understand current educational issues</li> </ul>	<ul style="list-style-type: none"> <li>• can demonstrate a proven track record of developing self within an educational context</li> <li>• can show resilience in the face of challenge</li> <li>• has excellent interpersonal skills, with the ability to listen and communicate effectively in all contexts</li> </ul>



## 05. How to apply

Jubilee Academy Mossley,  
Walsall, West Midlands

### Salary:

Teachers' Main Pay Range  
£22,917.00 - £33,824.00 Per Annum

### Closing date:

Tuesday 16<sup>th</sup> October 2018, 23:59

### Interviews:

Monday 22<sup>nd</sup> October 2018

### Start Date:

January 2019

### Visits to the school:

For further information about the role and the academy, or if applicants wish to visit prior to completing their application, please the academy on 01922 710357.

### Applying

Please apply by visiting:

[https://app.vacancy-filler.co.uk/salescrm/Careers/CareersPage.aspx?e=L  
Mo8nnTwYNZjbcH6ob6H2HZYXPXaqwlk2fBzXsgktL](https://app.vacancy-filler.co.uk/salescrm/Careers/CareersPage.aspx?e=LMo8nnTwYNZjbcH6ob6H2HZYXPXaqwlk2fBzXsgktL)

# Forward as one. Improving Education Together.

**Address:**

Academy Transformation Trust  
Suite 413  
Jewellery Business Centre  
95 Spencer Street  
Birmingham  
B18 6DA

**Visit:**

[academytransformationtrust.co.uk](http://academytransformationtrust.co.uk)

**Call:**

0121 794 7275

**Email:**

[office@academytransformation.co.uk](mailto:office@academytransformation.co.uk)



@AcademyTrust