



The Bishop of Llandaff Church-in-Wales High School

Sixth Form Prospectus



A close-up photograph of two young women. The woman in the foreground is out of focus, showing her blonde hair and a purple top. The woman in the background is in focus, smiling, with long dark hair and wearing a black jacket with white stripes on the sleeve.

**"In the sixth form,
students achieve very
high standards"**

Estyn

WELCOME

A very warm welcome to The Bishop of Llandaff Sixth Form.

As you make the very important decision of where and what to study, we trust our prospectus gives you a feel for what life is like here as a sixth form student. We are confident that whether you stay with us from Year 11 or join us in Year 12 from another school you will settle quickly and feel part of our very unique community.

Our sixth form is a vibrant and dynamic community where students receive high quality teaching in a culture of high expectations and excellent pastoral care. All students are challenged and supported to achieve their full potential as shown by our excellent results. We are a faith school and we believe this strengthens our relationships with students and staff. However, we are open to students of all faiths and those from none who wish to be educated at our school.

Our aim is to develop students with the skills and personal qualities required for the world of work and the highly competitive global marketplace. We are committed to supporting the success of every student. Our students leave us as well-rounded, confident and caring individuals through the range of leadership and extra-curricular opportunities we offer.

Our sixth form is at the heart of the school. Whether it be leading a house assembly or offering reading support to younger students our students seize opportunities for personal development and contributing to the well-being of others.

We are proud of our sixth form at The Bishop of Llandaff and strive to make your two years with us successful and enjoyable.

Gareth Rayner-Williams
Assistant Head

“I am delighted that you are considering joining The Bishop of Llandaff Sixth Form. Life as a sixth form student is very unique. You will want the freedom of college study but be assured of the high quality support you received in Year 11. At The Bishop of Llandaff we try hard to maintain this balance while preparing you for university or the world of work. Our sixth form students are truly exceptional! They play such an active role in the school and are genuine ambassadors for the rest of the community. If you join The Bishop of Llandaff Sixth Form in September then you can be guaranteed to settle in quickly, make life-long friends and learn in a supportive, challenging and exciting environment.

I wish you well in your studies and hope to see you in Year 12!”

Marc Belli
Headteacher

CURRICULUM

At The Bishop of Llandaff students choose up to four subjects at AS Level.

The following courses are available to students (subject to demand)

Art
D&T—Product Design
English Literature
Geography
Geology
Media Studies
Psychology
Welsh
Computing

Biology
D&T—Food
English Lit/Lang
German
Law
Physical Education
Religious Studies
Music
Applied Business

Business Studies
Drama & Theatre Studies
Film Studies
History
Mathematics
Physics
Sociology
Applied Sport
Health and Social Care

Chemistry
Economics
French
Applied IT
Further Maths
Politics
Music Tech
Applied Biology
D&T—Textiles

All of o
include

Advanc
employ
GCSE. A

All stud
Welsh c

We are
with ot
increas
student
another

“A levels are really challenging but the quality of teaching at ‘Bishop’ is amazing. This has helped me make the leap from GCSE”

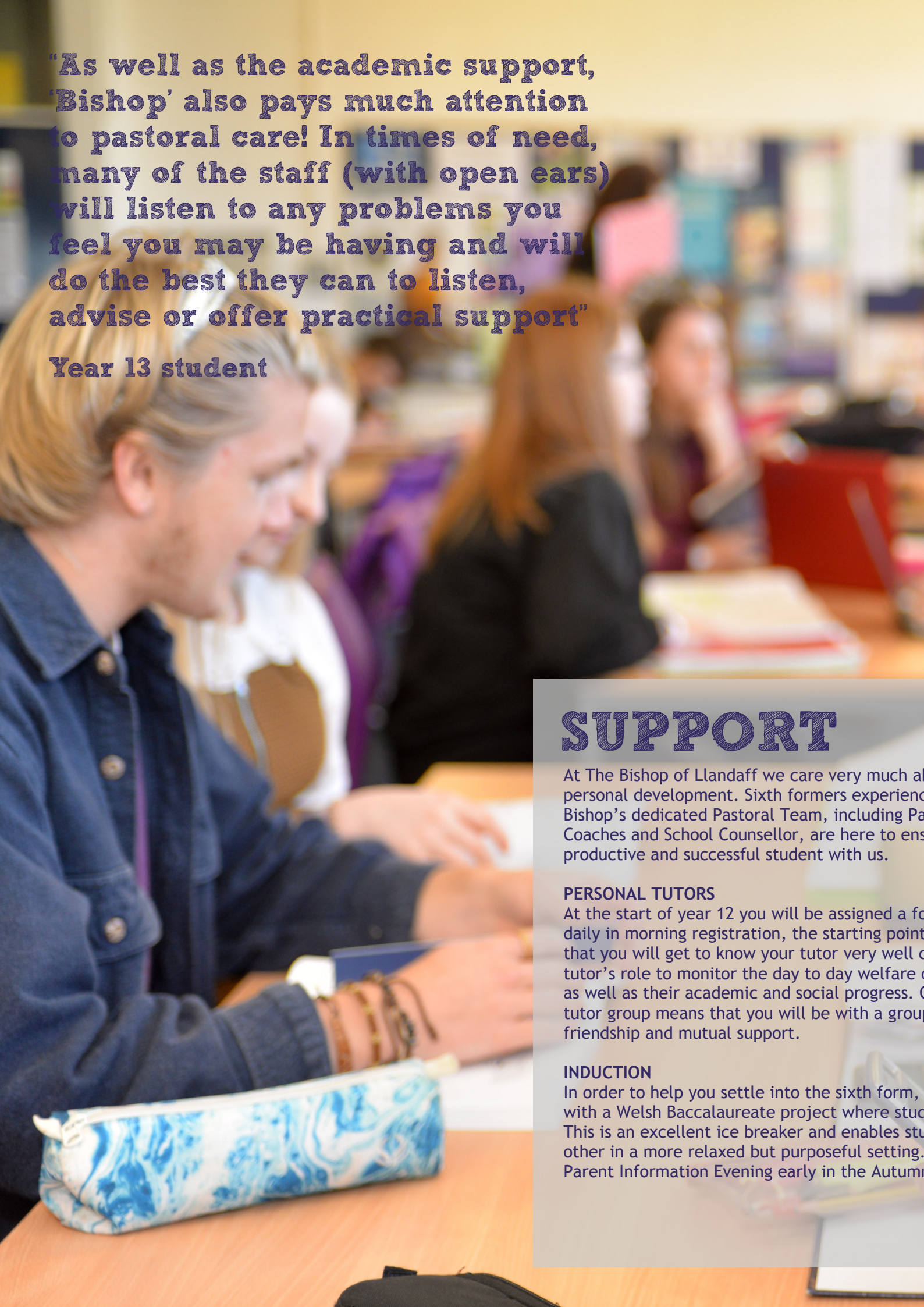
Year 12 student

Our students in the sixth form work towards at Level 3 qualifications. These are courses which include Advanced Subsidiary (AS) and Advanced Level (A2) as well as BTEC Diplomas.

Advanced Level and applied subject provides a traditional route to both higher education and employment. To study at Level 3 students are required to have at least 5 A*-C grades or equivalent at GCSE. Most of our students study four AS Levels or their vocational equivalent.

All students follow the Welsh Baccalaureate qualification, which is a compulsory element as specified by the Welsh Government.

As a medium sized sixth form, which means all students are known to us and through collaboration with other local schools (Whitchurch High School and Radyr Comprehensive) and colleges we are able to offer the breadth of subjects. This also means that in subjects where there are low numbers, students can follow their studies with one of our partners. We place a limit on one subject followed in any one institution from the qualifications studied.



"As well as the academic support, 'Bishop' also pays much attention to pastoral care! In times of need, many of the staff (with open ears) will listen to any problems you feel you may be having and will do the best they can to listen, advise or offer practical support"

Year 13 student

SUPPORT

At The Bishop of Llandaff we care very much about your personal development. Sixth formers experience the support of Bishop's dedicated Pastoral Team, including Pastoral Tutors, Coaches and School Counsellor, are here to ensure you are a productive and successful student with us.

PERSONAL TUTORS

At the start of year 12 you will be assigned a personal tutor. You will meet with your tutor daily in morning registration, the starting point for your year. This means that you will get to know your tutor very well and understand their role to monitor the day to day welfare of the students as well as their academic and social progress. Your personal tutor group means that you will be with a group of students who will form a friendship and mutual support.

INDUCTION

In order to help you settle into the sixth form, you will participate in a Welsh Baccalaureate project where students work together. This is an excellent ice breaker and enables students to get to know each other in a more relaxed but purposeful setting. We also have a Parent Information Evening early in the Autumn.

about student wellbeing and
the many pressures and
Pastoral Manager, Learning
ensure you are a happy,

form tutor who will be seen
for each day. This means
during the course. It is the
of students in their form,
Of course, being a part of a
o of students who offer

the start of Year 12 begins
students will work as a team.
students to get to know each
This is followed up with a
n Term.

Your subject teachers will provide you with help and support to manage the jump from GCSE and will guide you with managing your increased work load and developing independent study skills. Students who are new to the school will have a separate induction programme to help become familiar with life at The Bishop of Llandaff. Rest assured you will be supported at every step of the way.

ACADEMIC MONITORING

We want you to reach your full potential in the sixth form. Every student is expected to achieve the very best they can. Your subject teachers and the Pastoral team will monitor your progress closely, setting you target grades to meet which will be reviewed throughout the year. You and your parents will receive regular feedback to ensure your progress is on track through the designated parents evening in the Autumn Term, as well as interim and full reports.

STUDENT VOICE

We place great emphasis on the importance of Student Voice and students at Bishop are given opportunities to express their views on the teaching and learning they receive. Sixth form students are involved in the review of teaching and learning at key stage 5 as we believe your views on how you learn will keep on improving the learning experience. A thriving School Council led by sixth formers allows students to become more involved in the decision making process at Bishop and strengthens the sense of community that is central to the school's ethos.

SIXTH FORM LIFE

Leadership opportunities We encourage our sixth form students to take on leadership roles and provide a wide range of opportunities. We believe this sets an important example to the younger students and it prepares you with the skills required for the challenges of the 21st century. Many of our sixth formers run a lunchtime club, coach a sports team, co-ordinate a fundraising event, support younger students as a Reading Partner or act as an Ethos Ambassador. In addition, we have a team of student leaders who act as the sixth form leadership, providing support and guidance as well as establishing links with staff to ensure that life as a sixth former is both unique and exciting!

Enrichment Programme Our Enrichment Programme takes place every Wednesday afternoon, periods 5 and 6 for all sixth form students. The programme of enrichment is designed to help students to develop the skills that studying alone can't teach them. A range of opportunities are available to students from the new rugby academy, an Engineering programme, working with local barristers and University Language teachers. We believe our students will be provided with a range of activities that will truly enrich their experience with us.

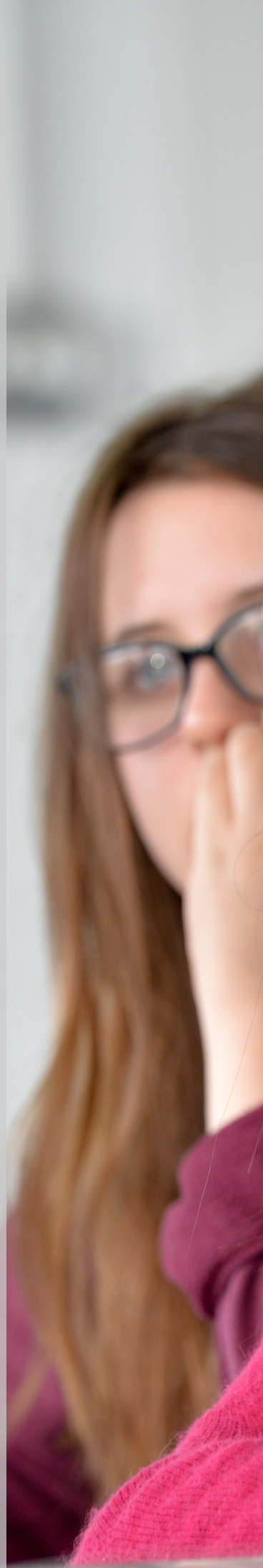
Other opportunities for students include: a range of sports, rock climbing or learn how to speak German, Spanish or even Mandarin. There is a cultural awareness group to support those wishing to apply to Oxbridge or Russell Group Universities. Music, Drama, Creative and Professional writing are amongst the many other enrichment activities that we offer. These are available to all students.


Our Duke of Edinburgh provision is one of the best in Cardiff with most of our students completing the Gold award each year. You will enjoy a range of experiences, discover talents you never thought you had, challenge yourself and make new friends. Achieving an Award will build confidence and skills that future employers are looking for. You will make a difference to other peoples' lives and your community, be fitter and healthier and make memories to last you a lifetime.

House System The House teams for the entire school are led by Year 13 students, each with a specific role. Every week the House teams lead an assembly for all students/staff in their house and during the year there are three main events that the houses work towards: Inter-House Games, Sports Day and Eisteddfod. Students can apply to be House, Sports, Charity and Eisteddfod Captains: prestigious positions which offer invaluable leadership opportunities.

Educational Visits and Trips Our students benefit from numerous opportunities throughout the year to experience life and learning beyond school. These may include a visit to The Tate Modern for those studying Art inspiring them to create their own masterpieces! For the Economists, The Royal Economics Society annual lecture provides an insight into real world problems faced by society today. Our partnership with Cardiff Metropolitan University enables our A-Level Biologists to gain hands-on experience of work in a micro-biology laboratory. Our prospective accountants thoroughly enjoyed gaining an insight into becoming a Chartered accountant through the ICAEW BASE competition.

We believe that experiences such as these enhance the sixth form experience. International visits are also well established; a recent visit to New York was organised by The Economics Department. Fifty students took the opportunity to visit famous landmarks such as The Empire state Building and The Brooklyn Bridge and experience some of the culture The Big Apple has to offer. For our more energetic students the PE Department arrange a ski trip. There is so much on offer and we are certain there is something for everyone!





"The enrichment programme offers all students range of opportunities to develop skills which will help me apply for jobs or university. These include engineering programmes, a chance to study a new language or an extreme sport"

Year 13 student



UNIVERSITY SUPPORT

The majority of our students progress to Higher Education. A strength of our sixth form is the extensive expertise we have in preparing our students successfully for this route. Our programme begins in the Spring Term of Year 12 with opportunities to attend seminars and conferences. After the AS exams, you will be introduced to the UCAS process. You will register for and complete most of your on-line application and will learn how to write a personal statement that will set you apart from other applicants enabling you to gain a place on a competitive university course.

All of our students benefit from one-to-one support in the completion of their personal statement as this is a key element of the application. We pride ourselves on knowing each and every one of our students; this results in a bespoke reference for all.

We have a comprehensive programme of support for our Medicine and Oxbridge applicants including interview workshops, mock interviews and specialist subject support. Our partnership with parents during this process is important to us and for those who are unfamiliar with the application procedure we arrange a UCAS Information Evening in the Summer Term of Year 12.

Find out more...

If you are interested in our school then feel free to pay us a visit. We have an annual Open Evening but the best way to find out if we are right for you is to see what school is like during the day... and at The Bishop of Llandaff 'Every day is an Open Day'.

"My child transferred into the sixth form from another, highly regarded, local secondary school and we were immediately struck by the caring ethos demonstrated by students and staff at 'Bishop'. This sense of compassion, community spirit and mutual respect only comes about through hard work and the efforts of staff and students who are committed to making the school's Christian philosophy an integral part of school life"

Parent

For further information

visit www.bishopofllandaff.org

call 029 20562485

follow us on twitter @Bishop_Llandaff
@BOLHS_6Form

The Bishop of Llandaff Church-in-Wales High School
Rookwood Close, Llandaff, Cardiff CF5 2NR

