



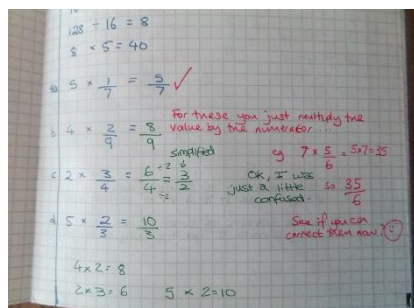
YAVNEH COLLEGE

MATHEMATICS DEPARTMENT

TEACHER OF MATHEMATICS

- To start September 2018 (or earlier)
- Full time
- NQTs welcome
- All NQTs supported throughout the year with an excellent bespoke programme

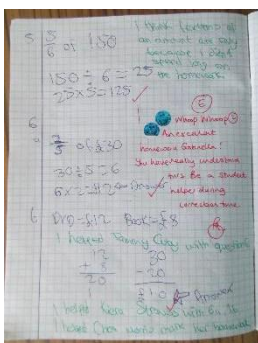
MARKING AND FEEDBACK



Teachers mark in red, pupils correct and reflect in green.

Pupils take notes in an orange book and complete exercises in a blue.

Homework is set 3 times a cycle in KS3 and twice a week in KS4.



Teachers are encouraged to find ways to make the subject of mathematics interesting and accessible to all.

THE MATHEMATICS DEPARTMENT

All of the members of the Mathematics Department are qualified mathematics teachers. The department occupies a suite of six large classrooms, each well-equipped with storage for books and other resources.

Every teaching room in the school is equipped with a ceiling-mounted data projector connected to a computer, DVD player, speakers and visualiser. Two of the mathematics classrooms are equipped with interactive whiteboards. An ICT suite is located adjacent to the maths classrooms.

The department is fully stocked with all necessary equipment, text books and software. There are detailed schemes of work, incorporating homework and assessment tasks, designed to challenge all pupils.

THE MATHEMATICS CURRICULUM

KS3 AND KS4 MATHEMATICS

The department uses MyMaths for KS3 and Edexcel GCSE Maths, all published by Oxford University Press.

The GCSE results have been consistently outstanding with an average of just below 90% of pupils achieving A*-C, and over 90% consistently making expected progress.

Year 11 will be take Edexcel GCSE (9-1) Mathematics.

A small group of exceptionally able pupils in KS4 are also studying the FSMQ in Additional mathematics OCR 6993.



YAVNEH COLLEGE

A LEVEL MATHEMATICS

Mathematics is an extremely popular A level and the results are exceptional. Last year 67% of students achieved an A*/A in mathematics, 94% achieved an A*/B. In further mathematics 83% achieved an A*/A, 100% achieved A*/B.

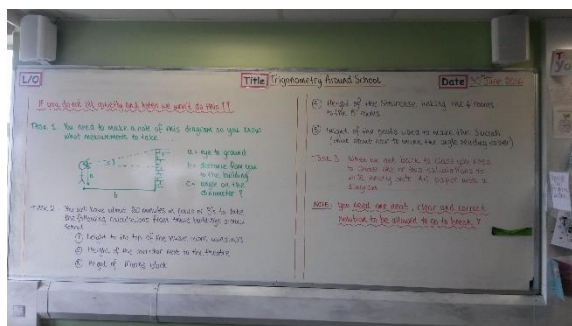
In September 2017 year 13 will be the last cohort studying the current specifications, Edexcel 9371 for A-level mathematics and Edexcel 9372 for A-level further mathematics.

The current year 12 cohort are following the new Edexcel specifications, 9MA0 for A-level mathematics and 9FM0 for A-level further mathematics.

THE DEPARTMENT

There are currently 5 full-time and 2 part-time mathematics teachers. The staff within the department are supportive, friendly and are always willing to help.

We hope that this provides you with all that you need to know in order to decide whether you wish to apply. If, however, there is anything further, please do not hesitate to contact the Executive Headteacher via his PA. He will be pleased to answer your queries.



There are spaces around school which can be booked and utilized for alternative style lessons.