

Spiritual, Moral, Social and Cultural learning at Newman College

Faith
Celebration
Dignity
&
Excellence
Service



Here at Newman College our committed staff do their very best to provide an abundance of experiences, inspirational events and opportunities for our pupils. The following examples are taken from our college newsletter 'The Cardinal'.

GOSPEL MUSIC ARRIVES AT NEWMAN COLLEGE

On Friday 25th November Newman College hosted its very first concert to feature solely gospel music. Throughout the day the school choir worked tirelessly with two professional gospel singers to learn new songs for their evening concert.



Newman College's singers worked throughout the day with Tyndale and Kadria Thomas, from the company 'Voice Assembly', to learn new singing techniques and gospel repertoire.

The concert was a great success and featured the first joint musical project between Newman College and The Radclyffe School, both schools coming together to perform and get to know each other better. The two schools were also joined by the Chadderton-based 'Soul Inspiration' Gospel Choir.

The concert was a great success and all pupils involved really enjoyed singing their hearts out to the audience.

(Mr Edwards)

THE FESTIVAL OF LIGHT - YEAR 8

As part of Newman's Festival of Light, year 8 pupils have participated in lessons in which they have reflected on their personal experiences of religious festivals and special times of the year. During this half term, pupils have been studying poetry. This has allowed pupils to think of the theme of 'light' and what this symbolises both globally and personally. Year 8 have also looked at the themes of 'responsibility' and 'empathy' as part of Give it to God week and have developed their thoughts on what it takes to be a good citizen in both our school community and wider community to inform their writing. They have reflected on how responsible they are towards others, especially during these festive times. We hope that you enjoy the poems and feel inspired to bring light to the lives of others.



We encourage our pupils to embrace and celebrate different faiths and cultural events. Above is an article about The Gospel Music concert which was a very successful collaboration with professional Gospel singers and Radclyffe School.

There is also an article about The Festival of Light celebration which was a pupil led project to celebrate the festival with the community.

PE offer a huge choice of sports clubs and activities to pupils across all year groups. They compete locally and nationally in many different competitions. PE staff offer lots of different lunchtime sports and afterschool activities to encourage talent and enjoyment.

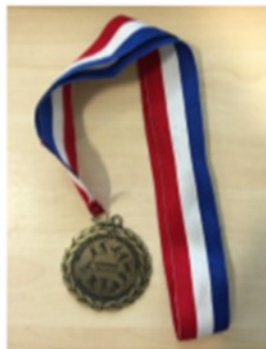
Below is an article by one of our pupils who won Shot Put champion in a Manchester school's competition. The other article is about our pupils who won medals in the Greater Manchester Athletics competition.

YEAR 8 SHOT PUT CHAMPION

I was fortunate to be asked to represent the year 8's of Newman College in the athletics championships, I feel the teachers must have recognised a talent from some PE lessons we had been in. I'm glad I was asked as it was my best accomplishment so far, winning competitions even against year 9s out of Manchester schools has been one of my greatest achievements. My sister and her friends doubted me but I think this just fuelled my motivation further. When I had discovered I had won I pretended to have come last, to then surprise her that in fact I had come first, as I presented the winners medal I had received.

Even though I am a champion against year 9s, I am still unable to beat one boy in year 8: The challenge continues!

(Kenny Onibada)



INDOOR ATHLETICS

The first Athletics Competition of the year took place at Sport City Indoor track. Newman Athletes from years 8 and 9 were selected to take part in the invitation competition competing against the best schools from all over Greater Manchester. Despite coming up against tough opposition Newman boys finished 4th overall with the girl's team finishing a solid 8th out of 12 teams.

Outstanding individual performances came from;
1st – Atty Mamman - 300m and Kenny Onibada – Shot Putt
2nd – Happy Obidiegwu - 60m
3rd – Georgina Munns – long jump, Evans Boasiako – 200m
4th – Lauren Henderson – 60m hurdles, Connor Nolan – 60m, Taiwo Onibada – Shot Putt

Sports clubs currently offered by PE:

Netball
Football
Rugby
Basketball
Trampolining
Table Tennis
Athletics
Cross country
Futsal Football
Rowing
Badminton
Rounders
Track
Cricket
Dodgeball
Rounders
Hockey

Field events– Shot Put, Long jump etc.



Trips and visits make up a huge part of teaching and learning at Newman College. Encouraging and inspiring pupils through practical and interactive experiences help them to develop and learn through enjoyment. They allow pupils to relate their subjects to 'real-life' situations.

Below are just a few examples of the trips and visits our pupils have been on as part of their learning experiences here at Newman College.

ENGLISH STUDENTS VISIT TO MATILDA AND HARRY POTTER

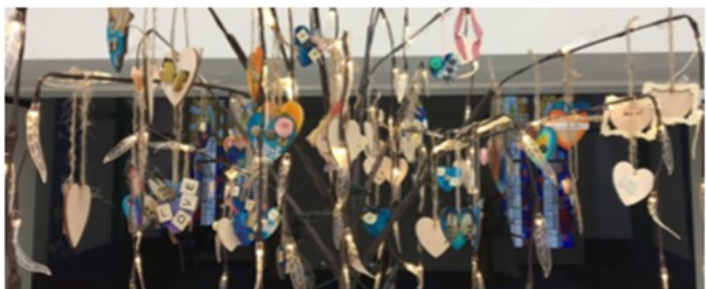
The English Faculty took 45 pupils to London this half term to see the captivating production of Matilda at the Cambridge Theatre followed with an over night stay in the capital. The following morning, pupils were amazed by a tour of the Harry Potter studios where they had the opportunity to step on to authentic sets and relive the magic through the eyes of the filmmakers who brought the Harry Potter film series to life.



YEAR 7 & 8 RETREAT DAYS



During November, year 7 and 8 were invited to Newman's first ever retreat days on Saturdays. The pupils had a fun filled day of activities such as arts and crafts, creating and reflecting on what they want to do during their time at Newman College. They also had the chance to meet new pupils in their year group. Lots of pupils were rewarded for the outstanding work, behaviour and help they showed to others. A big thank you to all. It was a brilliant day of joy.



THE SNOWMAN

"I'm not having that, Sir," said one pupil. "They were definitely miming. It was too good for them to be playing it!" That was just one response from a group of thirty Year 7 pupils who attended a screening of Raymond Briggs film version of *The Snowman*, accompanied by a live Orchestra. For many pupils this was the first time they had ever heard a professional orchestra perform. They were clearly impressed.



As well hearing Howard Blake's film soundtrack pupils also heard performances of *The Nutcracker Suite*, *Christmas Overture*, and *The Snowman Waltz*. Everyone left the performance feeling extremely Christmassy!

A lot of trips are subject based in order to make lessons more exciting and to ignite curiosity! We also run a lot of careers based trips to encourage pupils to think about their futures, this includes taster days and university visits.

MAGIC MATERIALS! @ MOSI

A group of 8 pupils were invited to attend a workshop at MOSI as a reward for attending STEM lunch time activities. Students worked with STEM Ambassador scientists from Manchester University to explore the science behind a variety of materials, from the very familiar all the way to the cutting edge of modern material technologies.



ENGLISH VISIT WHITBY

On the 29th November Mrs Chester's and Mr Kenny's class went to Whitby. The reason why we went to Whitby was because we are reading a book called Room 13 by Robert Swindells. The coach dropped us off at the The Abbey. It was amazing. We all even got to see the grave of Dracula! We enjoyed walking down the '199 steps'; we all raced down and as we went down we counted the steps.

After walking down the '199 steps', we went to the 'Magpie Café'. It was beautiful. The smell of fish and chips made us all hungry.

After lunch at the Magpie, we visited the RNLI Lifeboat Station and Museum. Finally, we visited Captain Cook's monument and the Whale bones.

We had a great experience and a great time in the beautiful town of Whitby.

(Eimaan Ali-Aslam)



AN EXPERIENCE WITH HARGREAVES



The Hargreaves project has been a great experience so far, learning so much about becoming an engineer and the importance of making sure all work that is produced is of the utmost quality and being able to present your work correctly. The project allowed me to really understand the relevance of 'practicals' in school and how beneficial they can be if you are looking to gain experience in the engineering field.

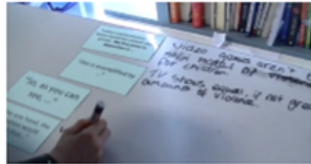
(Adnan Ahmed)

GCSE GEOGRAPHY STUDENTS TO THE COAST

With over four billion people living in coastal areas and numbers growing rapidly the need to understand and appreciate the issues involved in managing these areas is critical. Our students are visiting the Sefton coast line to see how and why coastal protection is necessary. Our first stop was Southport where the students appreciated the need for a sea wall as it is a defence against erosion for many economic activities, but in particular McDonalds! Then on to Formby Point where old Christmas trees are placed in the sand dunes each January to try to help sand accumulate without destroying the natural habitat of the Natterjack toad. Our final destination is Crosby where not only are there three types of hard engineering being used but the students also get to see Anthony Gormleys Another Place, statues of metal made from a cast of the artists' body and placed randomly in the bay.....and of course the opportunity for an ice cream before returning back to college!



Internally, staff organise many different types of clubs and groups. One of our huge assets at Newman is our dedicated Expressive Arts team who put on fantastic yearly productions with large numbers of our pupils. The hard work, commitment and the collaboration between staff and pupils gives us great pride. Other internal groups include the 'Debate Mate' team and the Amnesty International group. They all encourage our pupils to be interactive, forward-thinking and confident in their talents, opinions and skills.



"THIS HOUSE BELIEVES..."

Over the past half term, in English, we (9j1/9h1) have been debating on a Wednesday P5 in C7/E8, with the help of Mr Hill and Miss McGuire.

We have been exploring hot topics and current affairs whilst learning key skills such as verbal reasoning and articulation. In proposition, we believe that debating will benefit us in the future because we will be able to compete in a compressed job market and access the country's top universities. This is exemplified by the interview process you go through at university and job interviews.

The motions of the debates we have participated in have been: "This house believes that child labour should be banned" and "This house believes that violent video games should be banned". Both of these motions are relevant to us because as young people, we spend

our time playing video games whereas, others of our age category are involved in child labour. The topic of child labour was tied to other subjects, such as Geography, offering students a cross-curricular challenge.

All of this has prepared us for our participation in forthcoming competitions on a national scale, taking place in Nottingham. We hope that the future politicians, taking part in national debates, come from 9j1/9h1!

(Robert Davies, Joseph Gidley, Ataba Mammad. On behalf of 9j1/9h1)

OLIVER SCHOOL PRODUCTION

Newman's annual musical took place this week with three performances of 'Oliver!'. The show was an absolute success and received nothing but praise from everyone who saw it with emails, tweets and phone calls from members of the public saying how much they had enjoyed watching our talented pupils.

It has been an absolute pleasure and privilege to work with the cast over the past three months. They have shown maturity, dedication, patience and professionalism every step of the way. We feel very proud of each and every one of them and we are extremely lucky to work with such fantastic pupils. roll on next year, watch this space...! (Miss McGrane and Mr Edwards)

The show was fantastic because I made lots of new friends. I was really pleased to be picked for it and got on well with everyone. The teachers were amazing how they got everything ready.

(Dylan Breen-Malone Yr7 (Chairman))

The show has given me more confidence and it's helped me live in the moment and enjoy it, not to dwell on things. I've made friendships and memories with people from different year groups that I wouldn't have met without being in the show.

(Elizabeth Budge Yr8 (Mrs Sowerberry))

Oliver! Was a huge success for all involved! It was an honour to work with such talented people and I thoroughly enjoyed every second. I wish we could do it all again and will be so sad to do my last show next year.

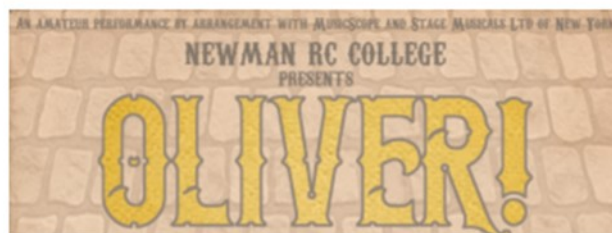
(Emily Moore Yr10 (Mr Bumble))

I have enjoyed the whole experience and took on the role to the best of my ability. Thank you to all who put their hard work into the show!

(Kxia Kulczewski-Binnall Yr10 (Widow Corney))

I really enjoyed taking part in Oliver! It has really helped me with my confidence. I loved playing the role of Nancy!

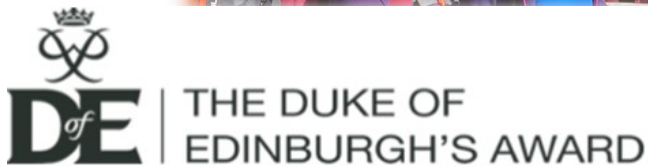
(Isabel Rubio Yr11 (Nancy))



Residentials are a great experience for a lot of our pupils. At Newman College we have a dedicated team of staff devoted to facilitating the Duke of Edinburgh Award for our pupils. This impressive award encourages independence and personal growth as well as a number of practical skills. Residentials to places like Castlerigg Manor focus on the wellbeing of our pupils and reinforce our Catholic Ethos by bringing pupils together through faith.

VISIT TO CASTLERIGG

During February half term year 10 and 11 pupils were given the opportunity to go to Castlerigg in the Lake District. The pupils got a lot out of this spiritual trip ahead of upcoming exams. This allowed pupils to take time away from what is a very busy period of their life and be able to reflect on what they had done, what they want to work on, but also meet new friends and reconnect with old friends. The pupils were excellent and were very sad to leave this beautiful place. Thank you to all staff and pupils who went to Castlerigg 2016!!



THE DUKE OF
EDINBURGH'S AWARD

The Duke of Edinburgh's Award students have been very busy this term preparing for the expedition section of the award and completing other sections of their award. Students have attended a half day walk in the Middleton area beginning at St Anne's Academy walking to Tandle Hill Country Park. Students prepared their kit beforehand thoroughly and practised their navigation skills that they learnt doing route cards at the DoE club evening sessions. It was good walking weather and all groups walked with a member of staff and completed the route including an orienteering session.



In February, students completed a second walk, this time a full day walking as a team without a member of staff. This was based at Dovestones and Diggle. Students did very well in some

colder weather. It was noted that students were much better prepared for this walk. All students completed the day walk and improved their navigation skills.

Students can now look forward to their practice expedition at Ashworth Valley, camping overnight at Ashworth Valley Scout Camp. Students will walk over two days and must show self-reliance carrying all of their own equipment, pitching their tent and cooking.



Newman College works hard to nurture young people and teach them to embrace our Catholic Ethos through kindness, charity and putting back in to our local community. Below are a few articles about different events and community projects.



BLESSED JOHN HENRY NEWMAN FEAST DAY

Our school celebrated the feast of John Henry Newman by having a fundraiser with various stalls which generated an impressive £6,295. Stalls were set up which had vintage goods, self decorated cakes and a range of different activities which students enjoyed as part of their afternoon activities. A cheque for £5,425 was presented to Caritas—the social arm of the Catholic Church in England and Wales, with the remainder donated to other charities chosen by the students.

JIGSAWS FOR FRANKLIN HOUSE

Marie Brady wrote a letter to Mr McGhee asking if it would be possible for the Design & Technology department to manufacture some large scale jigsaws out of thick material. They were intended to be used by elderly residents of Franklin House, some of whom have difficulty assembling more popular small scale jigsaws. We used the laser cutter to cut 9mm MDF so the pieces were accurate but also would not splinter. The images on the jigsaws were of a shop display from the 1940s, the second image was of a living room from the same era. Rather than Marie coming to collect the jigsaws herself, we visited the home to present the jigsaws to the residents. The Oldham Chronicle also came to record the moment and potentially include it in the newspaper.



REMEMBRANCE WITH TARGETED CURRICULUM



Students from the Targeted Curriculum area represented the college in the local community over the Remembrance period at the Over 60s Centre. Fiza Jamil, Carrissa Browne, Daniqua Bellamy along with Miss Mcwhirter, Miss Clapham and Mr Hewitt served tea, coffee and refreshments for the elderly and shared some wartime music and poetry for the centre which the centre commented on as students 'being a credit to Newman RC College.' Students had the opportunity to meet the leader of Oldham Council, Jim McMahon. In addition to this, special thanks goes to Fiza Jamil who read the poem 'Flanders Field' to assemblies through the Remembrance week clearly and confidently.

Newman RC Retreat Days, Author Jim McMahon Visit, National Band Festival Concert, Gospel Music Concert, Christmas Concerts, Christmas Carolling at Asda in Chadderton, Frankenstein at the Waterside Theatre, Parliament visit with Amnesty International, An interview with a local MP, Harry Potter Museum and theatre show to London, Cinema rewards trips, Yearly Ski trip to Italy and France, Geography trip to The Bay of Naples, Music trip to Rhineland in Germany, best buskers in London performance by The Tailor-made, Royal Exchange Theatre visit, Si... trip, The Festival of Light concert, History trip to ... Evening with Brian Cox, Geography trip to Sou... niques session, Whitby pupil's first seaside experience, ... ive Sports competition, PE Boreatton Park, ... Markets, Hargreaves Engineering, Ice Skating ... ards trips, KS3 event at Manchester Museum of ... nce Conference at the Bridgewater Hall 'Bright ... E Power Station Oldham Theatre Workshop Group ... al workshop, Commando Joe's Big Boot Camp, Fiddlers Fe ... tion, Thackeray Museum , Oliver performance, Joseph and the Technicians, Our Dreamcoat performance, The Wiz performance, Annie performance, London trip for 'Debate Mate', PZ Cussons workplace visit , Captain's table, Takeover Day, Memory Man sessions, Discovery Education Events-Shakespeare 400 A Virtual Field, Stretford Athletic Track, Manchester Sportscity, Bowness, Ambleside & Grasmere, STEM Big Bang Exhibition, Loretto College Taster Day, Oxford University visit, Cambridge University visit, Geography Tram trip, The Snowman at the Queen Elizabeth Hall, Liverpool Exhibition Centre, Career's fairs, Waddecarr Duke of Edinburgh, Tandle Hills Duke of Edinburgh, GCSE Art Exhibition evening, Oldham Athletics event, Science Fair Rushcroft, MOSI STEM career workshop, Sports Days, Royal Horticultural Society workshops, Author Phillip Caveney visit, MFL Roadshow Theatre field 'A View from the Bridge', Music trip to Belgium, University of Manchester Languages Taster sessions, Castlerigg Manor residential, Amnesty trip to Parliament, Macbeth Oldham Theatre Workshop.

