



# Class Teacher

## Application Pack

North Walsall Primary Academy,  
Walsall, West Midlands

# Contents

North Walsall Primary Academy,  
Walsall, West Midlands

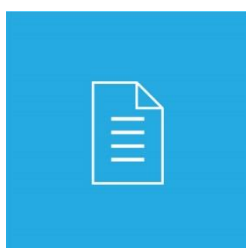


**01**

About Academy  
Transformation Trust

---

Page 3



**02**

North Walsall  
Primary Academy  
Information

---

Page 4

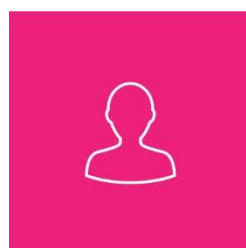


**03**

Job Description

---

Page 5 - 7



**04**

Person  
Specification

---

Page 8 - 9



**05**

How to apply

---

Page 13

Improving Education **Together.**



# 01. About Academy Transformation Trust

## We're on a mission

Our mission is to provide the very best education for all pupils and the highest level of support for our staff to ensure every pupil leaves our academies with everything they need to reach their full potential.

## These are the things we hold dear

### Transparency

As a charity founded on strong ethical practices, Academy Transformation Trust takes pride in being open, honest and crystal clear in everything we do.

### Innovation

We are constantly striving to do all we can to make education the best it possibly can be. We are brave in our actions and do everything we can to have a positive impact on whole child development.

### Collaboration

We believe the future of education relies upon effective collaboration between academies, and better collaboration between academies and their local communities.

### Ambition

We are determined to improve education nationwide by encouraging collaboration and giving academies everything they need to realise their full potential.

We believe every child matters and deserves a first class education.

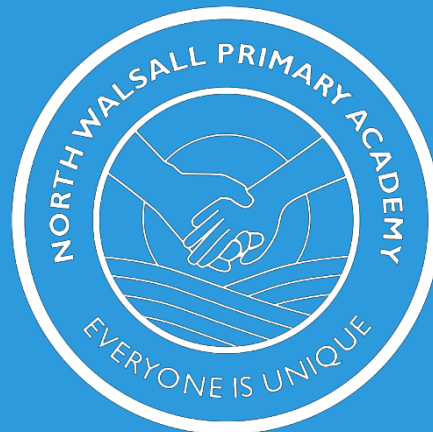
Our team knows first-hand how to make education better for schools, pupils and their teachers.

For us, the future of UK education relies upon schools working closely together to share best practices, giving every child the best chance in life. We set up ATT to make this vision a reality.

As a not for profit trust, we work with our growing family of primary and secondary academies, and further education providers in the Midlands, East of England and South East.

## 02. North Walsall Primary Academy Information

North Walsall Primary Academy is a learning community in which everybody wants to continuously improve, is expected to continuously improve and has a duty to help others to do so. There is a relentless pursuit by all staff to create a happy, respectful and purposeful learning environment in which every child, regardless of their starting point, is challenged and supported to be the very best that they can be. The combination of high expectations, an engaging and tailored curriculum and a dedicated, highly skilled team combine to create an ambitious academy that continuously strives for excellence.



We are very proud of the 'Good' outcome of our recent Ofsted inspection. Our team shares a resolute drive to maintain the momentum we have built in order to secure the continuous improvement of the academy and therefore ensure that our children and community benefit from the high performing academy they need and deserve

To find out more, please visit [www.nwpa.attrust.org.uk](http://www.nwpa.attrust.org.uk)





# 03. Job Description

## KS2 Teacher – Primary Academy

The duties outlined in this job description are in addition to those covered by the latest School Teachers' Pay and Conditions Document. It may be modified by the Principal, in consultation with yourself, to reflect or anticipate changes in the job, commensurate with the salary and job title.

### Key responsibilities are:

- > to embrace our vision
- > to engage with a culture that promotes excellence, equality, high expectations and aspirations of all pupils in our care
- > to engage with a culture and systems which ensure that safeguarding and child protection are of the highest priority
- > to engage with and implement all policies and procedures, including providing feedback for continuous improvement of policies and procedures as appropriate
- > to create and deliver lessons that are at least Good, and strive towards Outstanding
- > to ensure that pupils are offered world class 21<sup>st</sup> century learning opportunities
- > to support the development of our family of academies
- > to undertake adhoc duties as required.



# Specific Responsibilities

### Overview

The successful candidate will:

- > work collaboratively within the academy and with other Trust academies to enhance the whole network
- > engage with a culture of high expectations and aspirations so that all pupils are able to achieve their potential and the academy secures high attainment for all
- > continue to transform the quality of teaching and learning by creating and delivering lessons that are at least Good and strive for Outstanding, including the use of effective differentiation within lesson
- > ensure that all staff are respectful towards all pupils, with an unshakable belief in their entitlement to a high quality education, whatever their circumstances and ability
- > take a leading role in the development of new and emerging technologies to enrich and extend the learning experiences of all pupils
- > maintain and enhance best practice as an academy which works with and for its community.

### Pupils

The successful candidate will:

- > ensure pupils are always engaged in safe and healthy educational activities in an environment that is rich and colourful and designed to promote enjoyment and excitement in learning
- > identify pupils who require interventions in collaboration with colleagues
- > create and deliver tailored lessons that lead to improved outcomes for pupils
- > engage and build effective working relationships with pupils
- > plan and deliver opportunities to develop the social, emotional and cultural aspects of pupils' learning
- > organise and manage groups or individual pupils; ensuring differentiation of learning needs, reflecting all abilities
- > ensure the academy's Behaviour Policy is implemented effectively.

### Ethos

The successful candidate will maintain:

- > our vision to aspire to create a learning community built and sustained by a culture of citizenship, respect, trust, honesty, well-being and financial independence
- > an environment where all members of the academy and its community actively demonstrate their care and concern for everyone and fulfil the requirements of our shared vision
- > high morale, with the Principal setting an example in terms of professional standards and leadership.

## 03. Job Description

### Other

The successful candidate will:

- > maintain links with organisations
- > liaise as necessary with other recognised bodies or agencies in the furtherance of the academy's needs or those of any child, employee or parent/carer.

# 04. Person Specification

## Class Teacher – Primary Academy

### Key responsibilities

At the academy, we strive to achieve excellence and to be judged an outstanding academy. In order to maintain the high standards and build on success of the academy, you will need to:

- > champion a culture of high expectations and aspiration so that all pupils are able to achieve their potential and the academy secures high attainment for all
- > support the continued transformation of the quality of teaching and learning so that all pupils consistently make progress which is better than pupils nationally
- > ensure that all staff are respectful towards all pupils, with an unshakable belief in their entitlement to a high quality education, whatever their circumstances and ability
- > take a leading role in the development of new and emerging technologies to enrich and extend the learning experiences of all pupils
- > maintain and enhance best practice as an academy which works with and for its community.

	Essential	Desirable
Professional qualifications and learning	<ul style="list-style-type: none"> <li>• 5 GCSEs (A* to C) including Maths and English – or equivalent</li> <li>• Undergraduate degree</li> </ul>	<ul style="list-style-type: none"> <li>• Held variety of roles and responsibilities within a primary school/academy</li> <li>• Qualified teacher status</li> </ul>
Experience of	<ul style="list-style-type: none"> <li>• being a ‘good’ classroom teacher</li> <li>• working with children with a variety of needs</li> <li>• linking with statutory agencies</li> </ul>	<ul style="list-style-type: none"> <li>• being an Outstanding classroom teacher</li> </ul>
Safeguarding	<ul style="list-style-type: none"> <li>• Commitment to the protection and safeguarding of children and young people</li> <li>• Up to date knowledge and understanding of relevant legislation and guidance in relation to working with, and the protection of, children and young people</li> <li>• Co-operation and collaboration with relevant agencies to protect children</li> </ul>	<ul style="list-style-type: none"> <li>• Relevant safeguarding training/qualifications</li> </ul>
Shaping the future	<ul style="list-style-type: none"> <li>• A reflective practitioner who adapts teaching in light of ongoing assessment</li> <li>• Can think strategically to identify where interventions will be most effective</li> <li>• Can ensure creativity, innovation and use of appropriate technologies to ensure the</li> </ul>	<ul style="list-style-type: none"> <li>• Ability to lead and implement change and challenge</li> <li>• Motivate and enthuse all stakeholders in the development of the academy</li> </ul>



## 04. Person Specification

	<p>academy achieves excellence</p> <ul style="list-style-type: none"> <li>• Can ensure our shared vision is clearly articulated, shared and implemented in a range of compelling ways</li> <li>• Can respond effectively to change and challenge</li> </ul>	
Leading, Learning and Teaching	<ul style="list-style-type: none"> <li>• Excellent understanding of the principles of effective teaching, learning and assessment</li> <li>• Excellent and current knowledge of all curriculum requirements and can implement, monitor and support these effectively</li> <li>• Excellent knowledge of characteristics of outstanding teaching and learning for pupils of all abilities</li> <li>• Successful, proven track record of excellent teaching, learning and assessment</li> <li>• Excellent understanding of assessment and how it can be used to improve pupil progress</li> <li>• Proven track record in setting challenging targets, monitoring and evaluating effectively to challenge under performance and celebrate success</li> </ul>	<ul style="list-style-type: none"> <li>• Can demonstrate the very best quality of teaching and learning for all pupil groups including SEN and EAL</li> <li>• Able to undertake a strategic role in the development of new and emerging technologies to enhance and extend the learning of all students</li> <li>• Committed to continuous learning for all members of the academy community, including professional development</li> <li>• Excellent understanding of the principles of effective teaching, learning and assessment in all phases</li> </ul>
Developing self and working with others	<ul style="list-style-type: none"> <li>• Effective planning, including deployment of support through quality first teaching and in the delivery of interventions</li> <li>• Develop and maintain a culture of high expectations for self and for others</li> <li>• Review own practice, set personal targets and take responsibility for personal development</li> <li>• Manage own workload and that of others to allow appropriate work/life balance</li> <li>• Maintain confidentiality</li> <li>• Articulate and understand current educational issues</li> </ul>	<ul style="list-style-type: none"> <li>• Demonstrate a proven track record of developing self within an educational context</li> <li>• Shows resilience in the face of challenge</li> <li>• Excellent interpersonal skills, with the ability to listen and communicate effectively in all contexts and to command respect</li> </ul>
Managing the Organisation	<ul style="list-style-type: none"> <li>• Has the ability to articulate and communicate the vision and values that make the academy unique</li> <li>• Has the ability to secure high levels of engagement from all stakeholders which enable excellent pupil achievement</li> </ul>	<ul style="list-style-type: none"> <li>• Proven track recording of supporting school improvement</li> </ul>



## 05. How to apply

North Walsall Primay Academy,  
Walsall, West Midlands

### Starting Salary:

UQ1 to M4

### Closing date:

12pm on 19<sup>th</sup> November 2018

### Interviews:

TBC

### Start Date:

January 2019 or as soon as possible thereafter

### Visits to the school:

For further information about the role and the academy, or if applicants wish to visit prior to completing their application, please contact the academy on 01922 720822 or [postbox@nwpa.attrust.org.uk](mailto:postbox@nwpa.attrust.org.uk)

### Applying

Please apply by visiting

<https://app.vacancy-filler.co.uk/salescrm/Careers/CareersPage.aspx?e=LMo8nnTwYNYoqapPOWXIzHncnNdO2uAY4IEavS8z9go3ZQehshhBawse9AJkdTbLa7seg7mh3RM&iframe=True&iframe=false&HideCareersLink=True>

# Forward as one. Improving Education Together.

**Address:**

Academy Transformation Trust  
Suite 413  
Jewellery Business Centre  
95 Spencer Street  
Birmingham  
B18 6DA

**Visit:**

[academytransformationtrust.co.uk](http://academytransformationtrust.co.uk)

**Call:**

0121 794 7275

**Email:**

[office@academytransformation.co.uk](mailto:office@academytransformation.co.uk)



@AcademyTrust