

## **Organisation and Structure**

The MET currently comprises five academies - one secondary and four primary - and a nursery located in Melton Mowbray, a small market town in northeast Leicestershire. A fifth primary Sherard Primary School is expected to join the Trust in the New Year. The secondary academy John Ferneley College is the founding member of the Trust. Ab Kettleby Primary School, Brownlow Primary School, and Somerby Primary School joined the MET in April 2014. The Grove Primary School joined the Trust in October 2014 followed in 2016 by the Oasis nursery.

Trust academy websites can be access via the Trust website [mowbrayeducation.org](http://mowbrayeducation.org)

In September 2015 the West Grantham Academies Trust comprising St Hugh's secondary and St John's Primary joined the Trust as a partner organisation. This move was brokered by the Regional Commissioner and provides the West Grantham Academies Trust with school improvement challenge and support until September 2018.

It is expected that during 2017 the MET will further expand through the forming of a Hub of academies in a neighbouring county. This development will be at the behest of the Regional Commissioner and builds on the Trust's DfE sponsorship status.

## **Governance Structure**

The Board of Trustees is the chief decision making body for the Mowbray Education Trust. The Board has overall responsibility to the Department for Education (DfE) for: admissions; staffing; finance; premises; curriculum; well-being and safeguarding; accountability for educational results; and reporting requirements to the DfE, the Education Funding Agency (EFA) and the Office for Standards in Education, Children's Services and Skills (Ofsted).

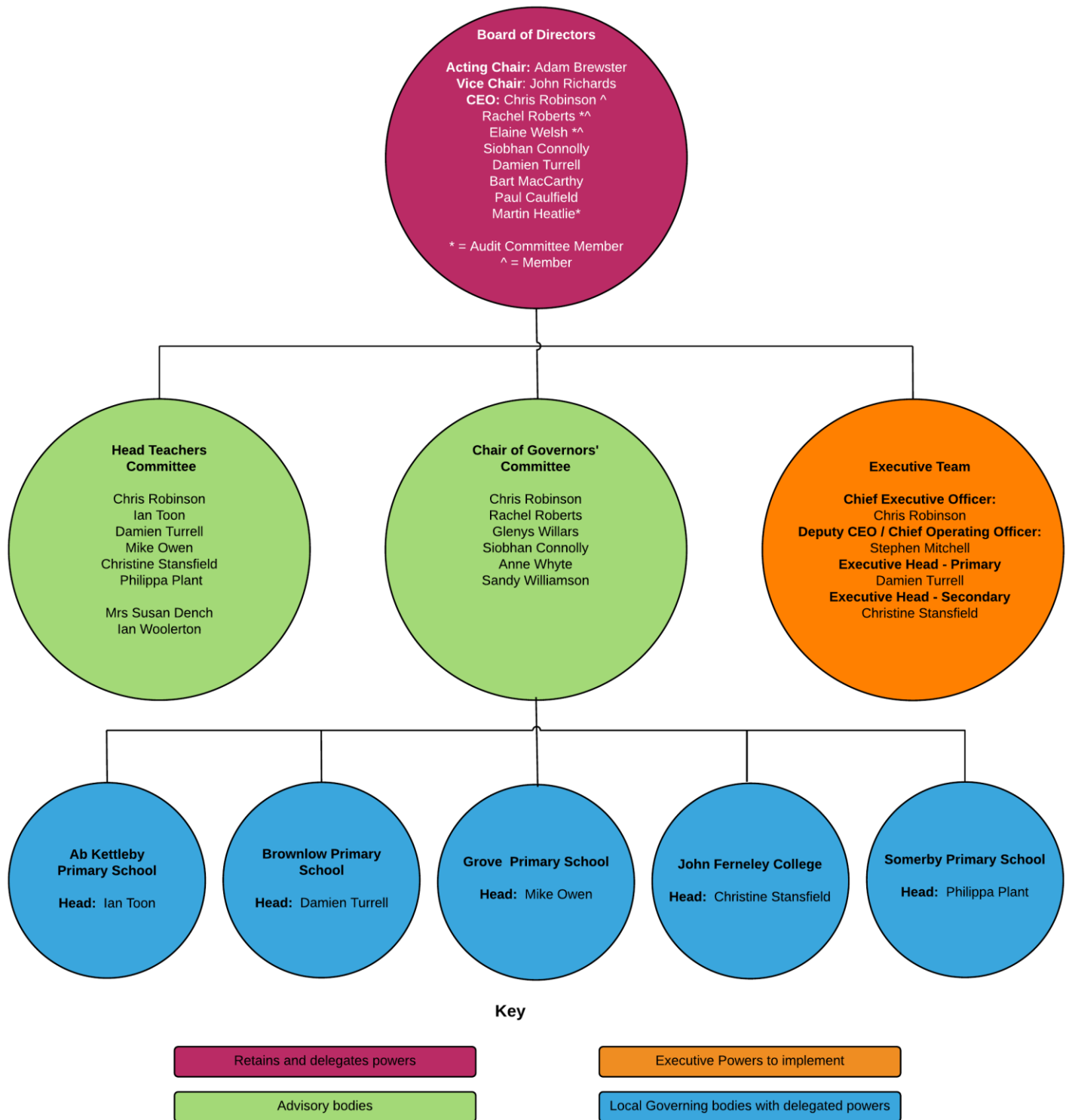
The Trust board and its Finance & Audit and Nominations & Remunerations sub-committees meet quarterly. Each committee has clear terms of reference and minutes are kept for all meetings.

Through a Scheme of Delegation the Trust Board delegates a number of key powers to the Local Governing Bodies (LGBs) and academy Head teachers who essentially run our academies on a day-to-day basis.

Provided LGB's spend within their agreed budget, comply with Trust policies covering finance, human resources, estates management and health and safety, and deliver at least good pupil outcomes supported by Good or better Ofsted judgements, these delegated powers remain in place. If any of these conditions are breached the Trust reserves the right to intervene and if necessary amend temporarily the scheme of delegation for that academy.

Operating between the Trust Board and LGBs are two advisory groups: the Headteachers' committee chaired by the Chief Executive, and the Chairs & Vice Chairs of LGBs committee chaired by the Trust's Chairman. The former committee meets half termly whilst the latter meets termly. These two groups ensure that communication between the trust board and both LGBs and academies supports and informs decision-making.

## Governance chart



## **Members and Directors**

The Board comprises ten **Directors**, including three of the Trust's four **Members**. The Chief Executive is both a Member and Director of the Trust although this will change when the present incumbent retires. The Chief Operating Officer and both Executive Head teachers attend Board meetings.

The board is made up of a wide range of highly experienced individuals with backgrounds in education, business, and finance. Short biographies of these individuals and a statement of their business interests can be accessed via the Trust's website.

## Executive Structure

