

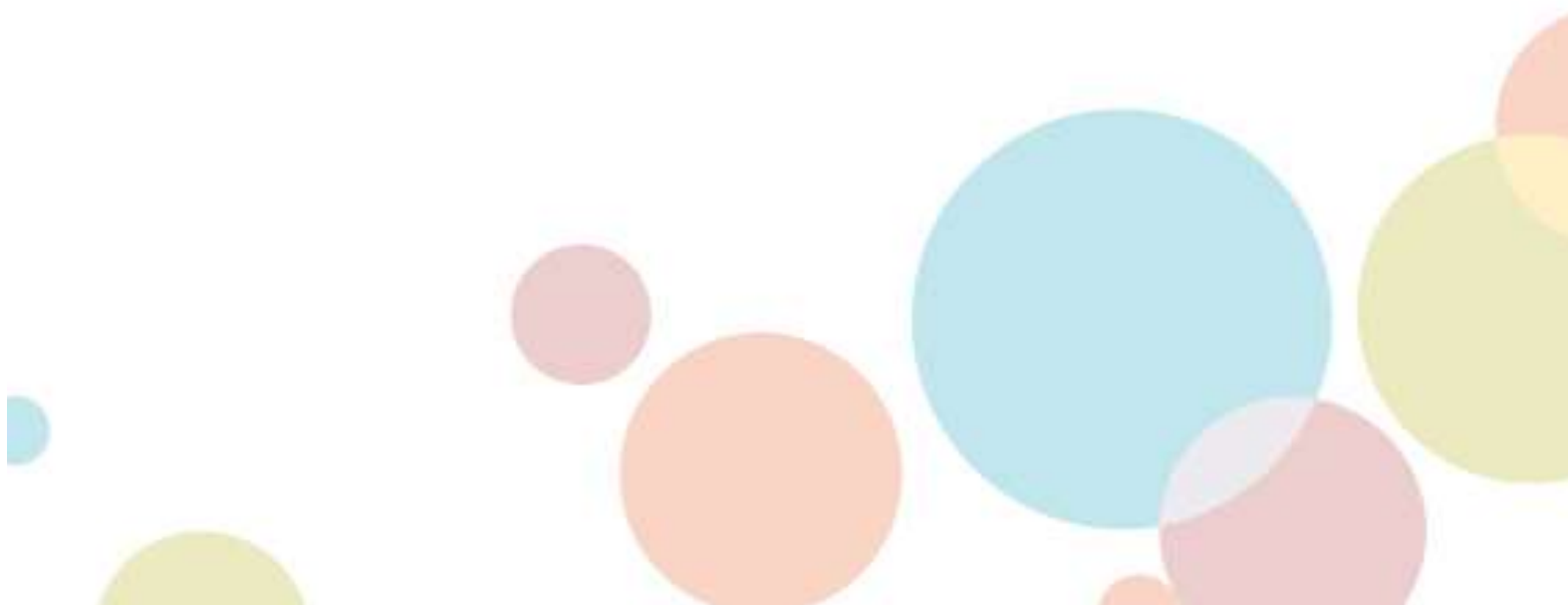


PE Teacher with some KS3 Maths Recruitment Information Pack



Contents

Letter from Headteachers	2
Vision	3
Application Process	4
Vacancy Advert	5
Job Description	6
Person Specification	7



Dear Candidate

Thank you very much for your enquiry regarding the position of **PE Teacher with some KS3 Maths** at Stanley Park High. This key position has recently become available and the Governing Body, together with the students, parents and staff, are seeking a talented individual who has the qualities to '*Ignite a Passion for Learning*'.

Stanley Park High is a flourishing non-selective secondary school in the London Borough of Sutton, and part of the Academies of Inspiration Trust.

We pride ourselves on our absolute focus on our students' wellbeing and development; the dedication and talent of our staff; our outstanding building and facilities and our innovative, award winning curriculum, which as well as achieving examination success aims to nurture and educate the 'whole child'.

The School was awarded 'Secondary School of the Year' by the TES in 2016 and in November 2015 we received Ofsted recognition for our commitment to a student-centred school, with inspectors grading our school 'good' with personal development, behaviour and welfare of students rated 'outstanding'. The report described us as "innovative and imaginative where pupils are very successfully prepared for their future lives." Inspectors also noted that "practically all students respond to the school's motto of '**Igniting a Passion for Learning**'. This is done by blending positive relationships, in small class sizes, with an exciting curriculum.

Our innovative and responsive curriculum ignites the learning experience of all our students. In Years 7 and 8 all students learn our unique competency based 'Excellent Futures Curriculum' alongside English, Mathematics, Science, PE and MFL. From Year 9 to Year 13 our offer is extremely responsive to the passions, interests and aspirations of our students. It enables them to combine the broad range of core subjects with significant specialist option choices that prepare them for further study, as well as practical skills for life and work.

Our learning and teaching is guided by several key principles. Notable amongst these are that learning should be experiential, enquiry based, practical, authentically assessed and related to real life. The quality of this Learning and Teaching is recognised by Universities and Teacher Training Institutions, who regularly seek our assistance in educating the next generation of teachers. We are committed to continuing professional development and are part of a local training school alliance due to the excellence of our work in this area.

We believe that this post provides an excellent opportunity for a talented individual to be a part of a school willing to take risks, push the boundaries in developing an innovative approach and, as a result, is viewed as an evolving success story.

We very much look forward to receiving your application.

Yours sincerely,



Mr Amit Amin
Acting Headteacher



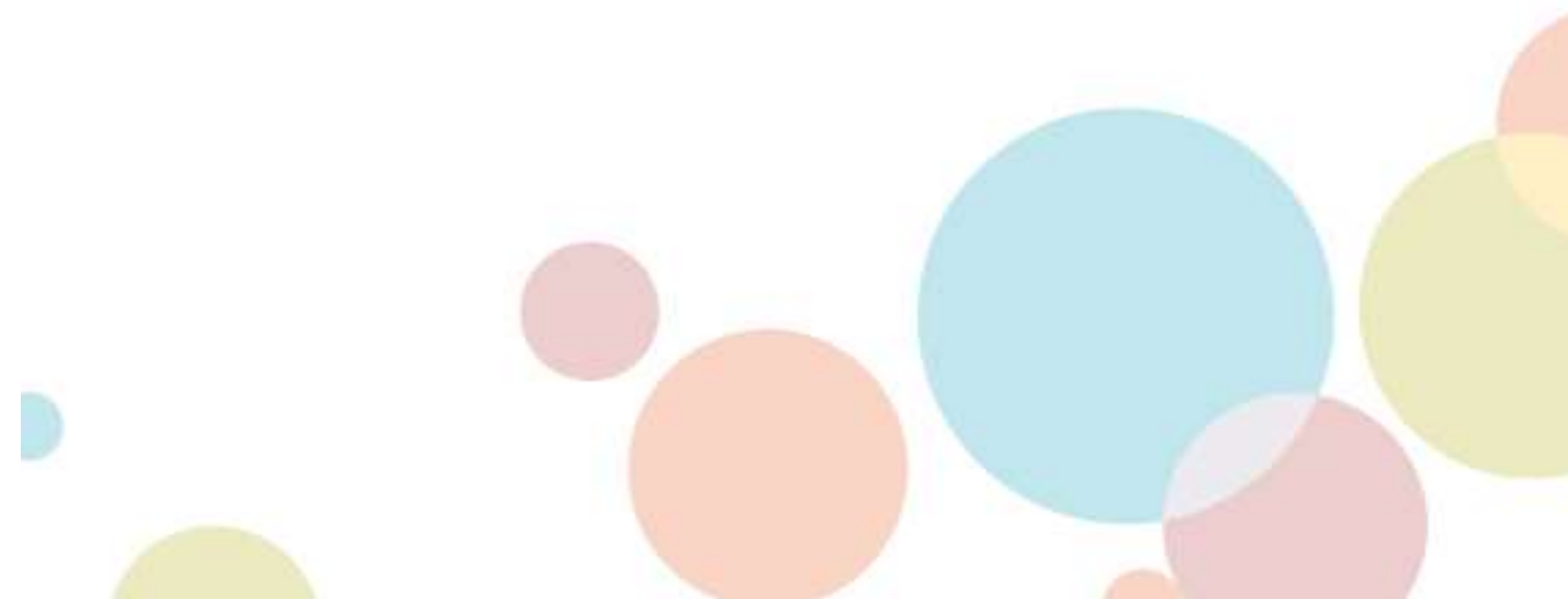
Ms Carol Symons
Associate Headteacher

Vision

Igniting a Passion for Learning

Every member of Stanley Park High will have:

- Ambition, commitment, resilience and perseverance
- Confidence to take risks
- An ability to organise and present themselves effectively
- Intellectual curiosity
- Imagination and creativity
- Initiative and self-motivation to learn independently and with others
- Optimism for a future in a rapidly changing world



The Application Process

We hope that this application pack and our website **www.stanleyparkhigh.org.uk** 'Ignites a Passion' sufficiently in you that you feel it important to apply for this post.

Please visit our website for an application form. Please ensure that you respond fully to the Person Specification and that your Personal Statement does not exceed two sides of A4 Arial Size 10. Our preferred method of application is by email to **recruitment@stanleyparkhigh.org.uk**

If you have not heard from us within 2 weeks of the closing date, please assume your application has been unsuccessful.

If you have any questions regarding any aspect of the application process or need additional information please contact Miss Horrigan on **recruitment@stanleyparkhigh.org.uk**

Closing date for receipt of applications: Midday, Friday 16 November 2018
Interviews to be held week commencing: 26 November 2018



**Teacher of PE with some KS3 Mathematics
required for January 2019**

**Main Pay Scale (Outer London Area)
TLR 2.1 available for suitably experienced candidate**

Stanley Park High is a flourishing and vibrant community school for students of all abilities, housed in a state of the art building with facilities that fully meet the demands of learning in the 21st Century. We retain an absolute focus on our belief that excellent relationships are vital to achieving effective learning and we are a Lead School for Human Scale Education.

The School was awarded 'Secondary School of the Year' by the TES in 2016 and in November 2015 we received Ofsted recognition for our commitment to a student-centred school, with inspectors grading our school 'good' with personal development, behaviour and welfare of students rated 'outstanding'. The report described us as "innovative and imaginative where pupils are very successfully prepared for their future lives." Inspectors also noted that "practically all students respond to the school's motto of '**Igniting a Passion for Learning**'. This is done by blending positive relationships, in small class sizes, with an exciting curriculum.

We are seeking an enthusiastic and conscientious Teacher of PE to join our highly motivated and successful team. You will be required to teach throughout the age and ability range. This post is an excellent opportunity for either an NQT or experienced teacher.

The successful candidate will:

- Ignite a Passion for Learning in all our students
- Be creative and dynamic in the classroom at all key stages
- Have the skills to form excellent working relationships with all individuals
- Be forward thinking and inspirational
- Have the ability to teach two major team games to a high standard

Please visit our website www.stanleyparkhigh.co.uk for the job description, person specification and an application form.

Our preferred method of application is by email to recruitment@stanleyparkhigh.org.uk

Stanley Park High is committed to safeguarding and promoting the welfare of our students and expects all staff and volunteers to share this commitment. This post is subject to satisfactory references, medical clearance and enhanced checks carried out by the Disclosure and Barring Service.



JOB DESCRIPTION

Job title: PE Teacher
Scale: Common Pay Spine
Responsible to: Programme Leader of Performance School

You are required to carry out the duties of a school teacher in accordance with the provisions of the School Teachers' Pay and Conditions Document.

1. General Purpose of the Post

The Teacher will support the Programme Leader of Performance School to:

- contribute to the vision and leadership of school in order to ensure continued progress ;
- be accountable for continuous improvement in the quality of education within the classes taught;
- support the ethos of this school;
- satisfy the aims of the school through the implementation of the policies of the governing body;
- develop high quality learning and teaching within the subject that promotes and secures the achievement of students;
- carry out any such reasonable duties as may be specified by the Headteacher including the role of Form Tutor.

2. Learning and Teaching

The Teacher will support the Programme Leader of Performance School to;

- deliver lessons according to the Stanley Park Outstanding Lesson guide;
- provide a broad, balanced and relevant curriculum within the subject that matches the differing needs of all students;
- interpret different forms of data in order to develop appropriate intervention strategies;
- plan for, assess, record and report students' progress in relation to the classes taught;
- promote and recognise all forms of student achievement;

3. Human, Financial and Physical Resources

Human

The Teacher will support the Programme Leader of Performance School to:

- promote a positive ethos and a safe environment in which the highest achievements are expected from all members of the school community
- promote good order, discipline and high morale throughout their classes and the school community
- create and maintain good working relationships among all members of the school community.

Financial

The Teacher will support the Programme Leader of Performance School to:

- identify areas of potential spend within department allocations.

Physical

The Teacher will support the Programme Leader of Performance School to:

- ensure that resources for the lessons are fit for purpose and fully support effective learning.

4. Equal Opportunities

The Teacher will, at all times, carry out the duties and responsibilities of the post with due regard to the school's equal opportunities policies.

This job description sets out the duties of the post at the time it was drawn up. The post holder may be required from time to time to undertake other duties within the school as may be reasonably expected, without changing the general character of the duties or the level of responsibility entailed.

PE Teacher with some KS3 Maths Person Specification

Please state, on the application form, how you meet the following selection criteria. Candidates will be shortlisted entirely on the basis of the extent to which they meet the criteria in their application form. Please ensure that you address every aspect, in turn, and number them under each heading. **All elements are essential unless otherwise stated.** Where 'desirable' is stated, only comment if you have the appropriate skills or experience. **Please ensure that your supporting statement is no more than two pages of typed A4.**

	Method of Assessment
Qualifications and Experience	
1. Qualified Teacher of PE	I/A/C
2. Evidence of ability to teach Mathematics at key stage 3	I/A
3. Evidence of raising achievement for all groups of students	I/A
4. Evidence of experience as a Form Tutor (<i>desirable</i>)	I/A
5. Evidence of the potential to be an outstanding practitioner	I/A
6. The ability to teach two major team games to a high standard	I/A
Skills, Knowledge and Understanding	
7. To be able to 'Ignite a Passion for Learning' in all students	I/A
8. To be committed to your lessons and facilitate high quality learning	I/A
9. To be very well organised and produce high quality work that meets all deadlines	I/A
10. To be able to present yourself very effectively, in both speaking and writing	I/A
Personal Qualities	
11. Be ambitious and have high expectations of yourself and all students	I/A
12. Be able to demonstrate strong resilience in the face of adversity	I/A
13. Be able to persevere to achieve the best possible outcome	I/A
14. Be intellectually curious and keen to learn alongside students	I/A
15. Be able to use your imagination and be a profound thinker	I/A
16. Be creative – develop new ideas/solutions that have real value	I/A
17. Be motivated to use your initiative – be an excellent self-starter	I/A
18. Be optimistic by nature	I/A

Key: A = Application, I = Interview and assessment, C = Certificate

Stanley Park High
Damson Way, Carshalton, Surrey, SM5 4NS
020 8647 5842
recruitment@stanleyparkhigh.org.uk
www.stanleyparkhigh.co.uk

Stanley Park High is part of Academies of Inspiration: a company limited by guarantee
Registered in England: Company Number: 08349962
Registered Office: Damson Way, Carshalton, Surrey SM5 4NS

