

SPECIALIST MATHS TEACHER CANDIDATE PACK

NEW GIZA, CAIRO

SEPTEMBER 2025



VISION

This ground breaking collaboration between New Era Education and Moon Hall School will establish a pioneering partnership in the education sector. Our joint vision places children and their needs at the core of this unique provision.

Moon Hall has shown its ability to positively influence student outcomes through customised programs that help children excel.

The new initiative will serve children with Special Educational Needs and those who are gifted and talented and who could benefit from individualised support to boost their academic performance.

Our primary areas of focus will include providing interventions for literacy and numeracy, as well as creating tailored strategies to support each child effectively.

Teachers delivering support will be expertly trained in meeting the needs of the individuals they work with.



OPENING
2025

“WHERE LEARNING SHINES:

MHS LEARNING CENTRE, MAKING THE DIFFERENCE”

www.mhsinternational.com



Moon Hall is a specialist school in Surrey, UK that focusses on supporting students with a primary need of dyslexia.

We believe the potential of every student should be determined, and is achieved through ensuring specialist interventions that promote student independence.

Moon Hall sets the gold standard in SEN support and ensures that each student achieves their full potential.

New Era Education was established in 2018 with the aim of providing world class educational services and school management, through bringing the highest quality educational institutions to Cairo.



New Era Education Chairman & Founder Tamer Tammam, PHD, believes that the partnership with Moon Hall Reigate is an important milestone in their journey to change the face of education, inspire communities to meet new educational challenges, and empower them to face the future. He believes that this strong partnership and the strategic location of the Uppingham campus, together with the anticipated quality of services we will offer our students, will have a significant and positive impact on the education scene in Egypt



“We are delighted to bring our expertise in SEN to the region to enable many more students to achieve their ambitions”.

Michelle Catterson, Executive Head,
Moon Hall Reigate

OUR TEAM

MHS Learning Centre

We will introduce a wealth of expertise to the region across various fields. Our team members will hold QTS qualifications and the highest level of accreditation in their respective areas. They will be not only expertly qualified but also empathetic and innovative in their approaches.



Head of Centre
Position filled



Specialist Teachers
Position filled



Educational Psychologist
Position filled



Speech and Language
Occupational Therapy
Positions filled

SUPPORT AVAILABLE

JUNE 2025

ADMISSIONS

The Centre will provide expertise to assist students who face challenges with their school curriculum or who are gifted and talented and help them improve their grades through English and Maths interventions. Admissions will commence and meetings with parents to suggest next steps.

SEPTEMBER 2025

ASSESSMENTS AND INTERVENTIONS

Between 1 pm and 8 pm, the Centre will buzz with activity as skilled professionals conduct diagnostic assessments. These assessments, performed by highly qualified individuals with the necessary accreditation, aim to offer insights into a child's requirements and provide strategies for support within their current environment. Expert services are offered to families aiming to gain a deeper understanding of their child's requirements.

Specialist interventions will take place offering support with;

Dyslexia

Dyscalculia

Speech and Language

Occupational Therapy

Literacy and Numeracy

Assistive Technology

ASSESSMENTS

Comprehensive Assessments Offered:

- Educational Psychology Evaluations
- Attention Deficit Hyperactivity Disorder (ADHD) Assessments
- Autism Spectrum Disorder (ASD) Evaluations
- Dyslexia Assessments
- Dyscalculia Assessments
- Occupational Therapy Assessments
- Speech and Language Therapy Evaluations



CONSULTANCY

Bespoke Consultancy packages

You will be required to participate in activities and which extend beyond the Centre and which will serve to supplement specialist interventions. The following activities will enable the Centre to broaden and deepen the impact of our role.

Parental support:

Discussion with the Head of Centre to advise on strategies for support
Recommendation on any diagnostic assessments
School visits to observe student in classroom
Liaison with other professionals and Educators regarding student

Teacher Training:

Workshops for educational professionals on SEN diagnosis and strategies

Parent Workshops:

Workshops on supporting your child through exams, mental health support as well as SEN support

SEN Workshops:

We will be raising SEN awareness level amongst Cairo teachers through a programme of Teacher Training Workshops focussing on SEN diagnosis and strategies

Parent Workshops will be held regularly enabling parents to provide support during exams, for mental health and how to support children with SEN at home.

JOB DESCRIPTION

Position Title: Specialist Teacher

Location: Moon Hall Learning Centre, New Giza, Cairo

Reports To: Head of Moon Hall Learning Centre

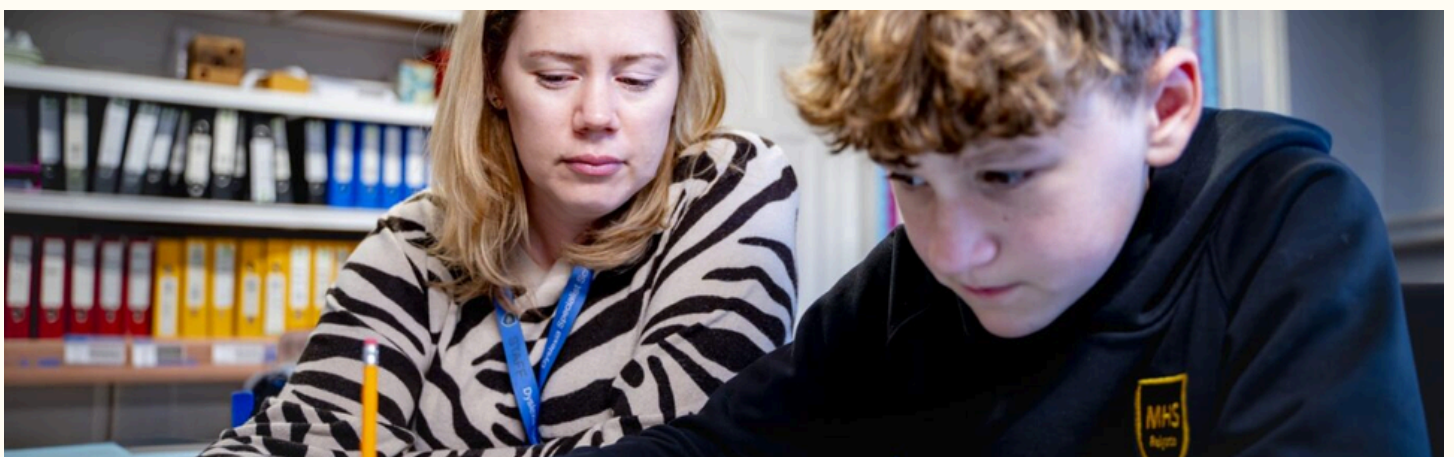
Responsible For: Delivering and planning high quality interventions suitable for students attending the centre

Role Overview:

The Specialist Teacher will be responsible for delivering targeted, supportive interventions to children visiting our centre. Working closely with other professionals and reporting to the Head of Centre, you will provide individualized and small group instruction to address specific learning needs identified through diagnostic assessments and tuition for gifted and talented children in maths. An interest or ability to teach coding would be desirable.

Key Responsibilities:

1. Deliver high quality, individualized lessons for children with specific learning difficulties or those that are gifted and talented – either one-to-one or in small groups
2. Utilise diagnostic reports to develop and implement tailored lesson plans and intervention strategies
3. Set appropriate targets for students and conduct regular reviews of progress
4. Provide detailed reports on student progress, interventions used, and recommendations for ongoing support
5. Communicate effectively with parents, other professionals, and the wider school community about student needs and progress
6. Work collaboratively with the multidisciplinary team to ensure a holistic approach to student support
7. Maintain accurate and up-to-date records of all interventions and student progress
8. Contribute to the development of individualized education plans (IEPs) in collaboration with other team members
9. Stay current with the latest research and best practices in specific learning difficulties and intervention strategies
10. Participate in team meetings and professional development opportunities to enhance skills and knowledge



JOB DESCRIPTION

Essential Criteria:

1. Qualified teacher status with a specialism in maths (an interest or ability to teach coding is desirable)
2. Bachelor's degree in Education or a related field
3. Minimum of 3 years of experience working with children with specific learning difficulties
4. Proven track record of designing and implementing effective intervention and teaching strategies
5. Excellent knowledge of a wide range of teaching methods and resources for SEN and gifted and talented students
6. Strong communication skills, both written and verbal, in English
7. Ability to interpret and apply information from diagnostic reports to inform teaching strategies
8. Proficiency in using technology to support learning and record keeping
9. Commitment to maintaining the highest professional and ethical standards
10. Clean criminal record and ability to pass rigorous safeguarding checks

Desirable Criteria:

1. Additional qualifications in related areas of SEN and or maths
2. Experience working in international or multicultural educational settings
3. Knowledge of the Egyptian educational system and local SEN landscape
4. Proficiency in Arabic or other relevant languages
5. Experience in developing and delivering training for parents or other educators

Professional Standards and Qualities:

1. Demonstrate a nurturing, kind, and understanding approach to working with children with a wide range of SEN
2. Maintain confidentiality and respect for student and family privacy
3. Show cultural sensitivity and respect for diversity
4. Collaborate effectively with colleagues, families, and external stakeholders
5. Contribute to a positive and supportive work environment
6. Commitment to ongoing professional development and continuous learning
7. Ability to work flexibly and adapt teaching strategies to meet individual student needs
8. Strong organizational skills and ability to manage multiple cases effectively

Specific Responsibilities:

1. Effective Communication:

- Maintain regular contact with parents, providing updates on student progress and strategies for home support
- Liaise with other professionals in the team to ensure coordinated support for each student
- Contribute to team meetings with clear, concise reports on student progress and intervention effectiveness

2. Using Diagnostic Reports:

- Analyse and interpret diagnostic reports to inform intervention planning
- Develop tailored lesson plans that address specific areas of difficulty identified in assessments
- Adapt teaching strategies based on ongoing assessment and progress monitoring

3. Report Writing:

- Produce clear, detailed reports on student progress, including specific interventions used and their effectiveness
- Document observations, assessment results, and recommendations for future support
- Contribute to the writing of IEPs and other formal documentation as required

4. Target Setting and Reviews:

- Set SMART (Specific, Measurable, Achievable, Relevant, Time-bound) targets for each student
- Conduct regular reviews of student progress against set targets
- Adjust interventions and targets as necessary based on student response and progress

5. Collaboration with Head of Centre:

- Follow direction and instructions from the Head of Centre to ensure alignment with the centre's overall goals and strategies
- Provide regular updates on student progress and any challenges encountered
- Participate in performance reviews and professional development activities as directed

Requirements:

1. Provide a minimum of two professional references
2. Submit to comprehensive background checks and safeguarding verifications
3. Provide proof of relevant qualifications
4. Demonstrate a clear understanding of child protection policies and procedures

This role offers an exciting opportunity to be part of a ground-breaking initiative in the region, making a significant impact on the lives of children with specific learning difficulties. The successful candidate will play a crucial role in shaping our specialist Centre's interventions and supporting student success.

If you are a dedicated professional with a passion for supporting children with diverse learning needs and want to be part of this innovative venture, we encourage you to apply.

Benefits:

1. Competitive salary
2. Furnished accommodation near the Centre
3. Health Insurance
4. Annual Return travel to the UK

Timescale:

Application deadline: 12th July 2025

Start date: September 2025

Moon Hall International is an equal opportunity employer and values diversity in our workforce

**"WHERE LEARNING SHINES: MH LEARNING CENTRE;
MAKING THE DIFFERENCE"**