



burlingtonhouseschool.com



BURLINGTON
HOUSE SCHOOL

“Burlington House is fast becoming London’s gold-standard for specialist education. It has built on the sure foundations of the dyslexia-specialist teaching of The Moat School, with a creative curriculum and expert training, to create a supportive through-school for a range of specific learning needs.”

Beyond London:

- 1. Bredon School
- 2. Heathermount School
- 3. Ripplevale School

London Schools:

- 1a. Abingdon House School
- 1b. Abingdon House School
South Kensington Prep
- 1c. Abingdon House School
Purley
- 2a. Burlington House
Prep
- 2b. Burlington House
Senior
- 2c. Burlington House
Sixth Form
- 2d. Burlington House
Tooting Common
- 3. Chelsea Hall School
- 4a. The Holmewood School
Lower
- 4b. The Holmewood School
Upper



The schools in the Cavendish Education group currently educate over 1200 children and young people. The schools based around the UK share a strong sense of community and collaborate to help all our pupils reach their highest potential.

Burlington House School

Burlington House School is a thriving independent day school for boys and girls aged 7 to 21 years old. It specialises in supporting pupils with dyslexia, dyspraxia and other associated learning needs to achieve their potential. Located in Hammersmith & Fulham.

Offering small classes and a caring, nurturing environment, the school allows all children regardless of their educational start point, to make progress. Pupils follow the National Curriculum and study towards GCSE and BTEC qualifications with a view to progressing on to further and higher education, or in to employment. Burlington House School Sixth Form focuses not only on A-Level and BTEC qualifications but also accommodates a varied work experience programme for all its pupils.

The school is conveniently located close to Putney Bridge station and is next to the historic Fulham Palace. It is minutes from Fulham FC football ground, as well as Bishop’s Park where the school runs regular extracurricular activities. The Sixth Form located off King Street in Hammersmith is moments away from the Thames and Ravenscourt Park. Our Prep school is located just 8 minutes walk from the main school site on Fulham high street and opened in September 2022.

The Cavendish Education Group

In Sept 2017, The Moat School (now Burlington House School) joined the Cavendish Education Group - a family of eleven schools focused exclusively on enabling children and young people with unique learning profiles (dyslexia, dyspraxia, autism and social and communication needs) to be the very best they can be.

The schools in the Cavendish Group do not focus on the things a child can’t do - rather, they focus on an individual’s strengths, talents and interests, and wholeheartedly believe that ‘if a child can’t learn the way we teach, then we must teach the way they learn’.

Each school has its own distinctive character, atmosphere and facilities, but they all provide a well-rounded, differentiated and skilfully-supported academic curriculum. Sport, technology, the arts, outdoor education and life skills all feature highly in enrichment activities.

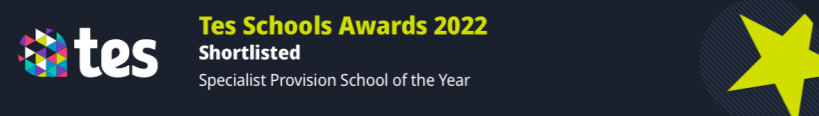
Cavendish schools inspire children and young people to have:

**the confidence to be themselves,
the competence to achieve,
the creativity to shine, and
the character to succeed.**





**Burlington House School, Prep,
Senior and Sixth Form are located in
Fulham and Hammersmith and connected by
a short riverside walk or cycle.
Burlington House School, Tooting will open
in September 2024.**



Burlingtonhouseschool.com

Job Description

“Burlington House is fast becoming London’s gold-standard for specialist education” (Good Schools Guide 2023) and we are looking for an inspirational team player who has the energy, expertise and experience to help our school transform the life chances of our extraordinary young people.

Burlington House School is seeking to appoint an experienced Counsellor to work as part of our exceptional, multi-disciplinary team of staff.

Burlington House School is an Independent School for pupils aged 7-19 that is mainstream in structure and specialist in nature. We support neurodivergent pupils with dyslexia, dyspraxia, dyscalculia, ADHD, specific learning difficulties and high-functioning autism. We have three different sites (Prep, Senior and Sixth Form) and we are looking for a counsellor to be based between our Prep (7-13) and Senior (13-16) sites. .

At Burlington House School, we deliver a bespoke education for every pupil, developing and expanding their unique talents and helping to bring about positive change to their self-esteem. Many of our pupils have experienced previous challenges in schools, including bullying, misunderstood learning needs and time out of education. We offer a specialist education in a mainstream setting, with a strong focus on attaining GCSEs and progressing forward to further education. This consistent academic focus is balanced with our specialist pastoral support. Pupils are supported, physically, emotionally and academically in order for them to reach their true potential whilst with us. You will work as part of a multidisciplinary therapy team including counsellors, Occupational Therapists and Speech and Language Therapists.



Job Description

The counsellor will be able to offer one to one sessions and to participate in group work when required and recognise that sessions with pupils may, at times, need to be on-line through video access. The counsellor will be based predominantly at our Prep and Senior sites but can be asked to work at any of our 3 sites.

The counsellor will need to understand the specific issues of confidentiality with pupils. They will need to liaise with the Therapy lead, Safeguarding lead, and the pastoral/therapeutic teams on a regular basis. Staff liaison and consultation will often be necessary to help devise inclusive strategies to support young people's emotional needs.

The counsellor will have experience dealing with external support agencies and also have the ability to liaise with parents and carers.

It will be essential to keep case records and to ensure they are stored securely in accordance with data protection requirements.

It will be an expectation to access regular supervision with a suitably qualified practitioner and to seek and engage with CPD. From time to time, there will be a requirement to attend training out of school hours.

Person Specification

	Essential	Desirable
Qualifications	<ul style="list-style-type: none"> Professionally accredited qualification - minimum level BACP diploma in counselling. BACP/UKCP registration Evidence of professional development. Evidence of safeguarding training and experience. 	<ul style="list-style-type: none"> A qualification in an aspect of therapeutic intervention. (Music therapy, play therapy, art therapy, CBT, DBT for example). Working towards BACP accreditation.
Experience	<ul style="list-style-type: none"> Relevant, recent experience of working in a school or college setting or within the age range of 7-19 years old. A track record of providing emotional support to young people. Experience of working with neurodivergent pupils with SEN needs. Experience of record keeping. Experience of working independently and managing your own caseload. Experience of working as part of a team. Experience of making contact with outside agencies. Experience of building relationships with staff and parents. To share strategies when appropriate. 	<ul style="list-style-type: none"> Awareness of the network of children's services & experience of multi-agency interprofessional work. Experience of undertaking therapeutic group work with young people.
Skills, Knowledge & Understanding	<ul style="list-style-type: none"> An ability to communicate appropriately with the school community, maintaining professional boundaries. An understanding and belief in the power of inclusive education. Proven ability to communicate effectively with young people. Ability to assess and identify specific needs of individual students and groups of students. Awareness & understanding of mental health issues and problems. Knowledge and understanding of safeguarding processes and procedures. 	

Person Specification

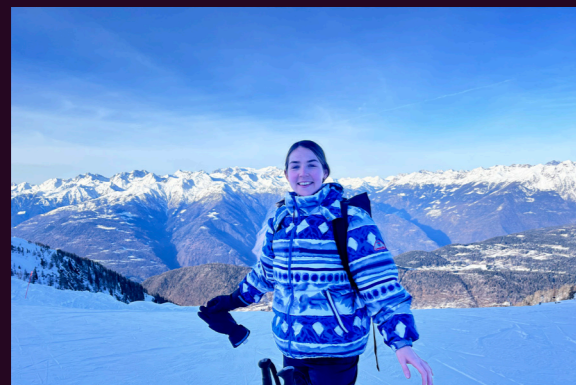
	Essential	Desirable
Personal, Emotional, Social and Physical	<ul style="list-style-type: none"> • Good interpersonal skills. • Ability to work as a member of a team. • Readiness to seek help & support to manage professional issues and problems. • An ability to relate well to people at all levels. • An absolute commitment to the belief that every child deserves the very best education. • An ability to maintain professional integrity even when under pressure. • Flexibility and resilience. • High organisational skills including the ability to prioritise and manage time effectively. • Able to work as part of a team whilst also being self-motivated. • Capacity to reflect on practice. • An understanding of the strategies for ensuring inclusion, diversity and access. • Reliability, honesty and trustworthiness, demonstrating the highest professional standards. • Ability and confidence to communicate effectively both verbally and in writing. • A commitment to on-going personal development and willingness to undertake appropriate training. • Evidence of commitment to safeguarding and protecting the welfare of children. 	
Work arrangements and availability	<ul style="list-style-type: none"> • Be prepared to start or continue with clinical supervision to adhere to best practice. 	<ul style="list-style-type: none"> • Available for training courses outside of working hours.



“The small class sizes mean you are really able to make a difference to each pupil. You can really see the progress and it’s a pleasure to to see their success”



“The location by the park is wonderful”



“The great thing about working at BHS are the relationsis that are cultivated with the students and between the staff.”



Staff Benefits

Your time at Burlington House School will include a broad variety of benefits including:

- Competitive Salary
- Pension scheme
- Cycle2Work scheme
- Staff socials
- Staff sport teams
- Laptop and IT support for all staff
- Free lunch during term time
- Staff professional development programme supported by the school
- Access to SpLD and ASD specialist training for all staff

Principal’s Welcome

Myself and all the staff are very pleased you are interested in joining the Burlington team. We are a small school that’s part of a big community and we would be delighted for you to help us grow even more.

Of course our main focus is to help and inspire the young people who pass through our doors, but we also take immense pride in supporting our staff inside and outside of school. I hope to see you in the corridors soon.

Best wishes

