

# HUNTINGTON SCHOOL



## WELCOME FROM THE HEADTEACHER

Thank you for your interest in the position of Teacher of Health and Social Care at Huntington School. This information pack has been compiled to give you key information about our school and the role for which you are applying. I was appointed Headteacher in February 2022 and it is a genuine privilege to lead such a wonderful community!

At Huntington we are passionate about providing the best possible education for our students, but we can only do that if they are in school, accessing teaching from a specialist. As the Attendance Support Officer, you will be expected to work proactively with students, their parents and colleagues to maximise their attendance and punctuality. As such, you must be enthusiastic, empathetic and resilient.

Huntington is a mixed comprehensive school and is fully inclusive, catering for the needs of all students regardless of academic ability or prior attainment. Our students are eager to learn and are strong advocates of our core values of Respect, Honesty and Kindness. These values are incredibly important to us and we challenge both staff and students to promote these qualities in all of their interactions.

We are demanding of our staff. We believe that our community deserves an outstanding school and we are committed to further improvements. We provide excellent training and CPD for both teaching and support staff, using the expertise of our Research School to develop an evidence-informed approach to teaching. Fifty percent of our staff are part-time - just part of our pledge to recruit the best and treat them exceptionally well.

This is an exciting time to join Huntington School! As Headteacher, I have a clear vision as to how I wish to take this school forward in the years ahead.

If you are a teacher who is wholeheartedly committed to delivering a high-quality inclusive education experience, and has the skills, experience, and knowledge required to further develop yourself in the role then we would like to invite you to apply for this post.

I look forward to hearing from you!

Matt Smith  
Headteacher

## SCHOOL INFORMATION

*“The school’s approach to teachers’ professional development is exceptional and the school’s ‘Research School’ has had an extraordinary impact on teachers’ understanding of how to improve their practice” - Ofsted Oct 2017*

Huntington School is a highly successful comprehensive school in the northern suburbs of the historic city of York. Our core purpose is to *inspire confident learners who will thrive in a changing world.*

Founded in 1966 and with the more recent accolade of becoming one of the country’s first and leading Research Schools we have established an enviable reputation for our expertise and innovation in teaching and learning, coupled with our school values of respect, honesty, and kindness.

Huntington is an 11-18 co-educational comprehensive school with a Sixth Form taking our total student numbers to approximately 1516, which includes over 300 students in the Sixth Form. Our students achieve excellent results, year-in, year-out, both at GCSE and A-level. Our A-level results place us in the top 10% of providers nationally and we rarely have any NEET students.

In Oct 2017, Ofsted rated the school **outstanding** in all areas. That judgment is a reflection of a lot of hard work, but only forms part of what makes Huntington so special. As a school, we by no means rest on our laurels, but continually strive to be better.

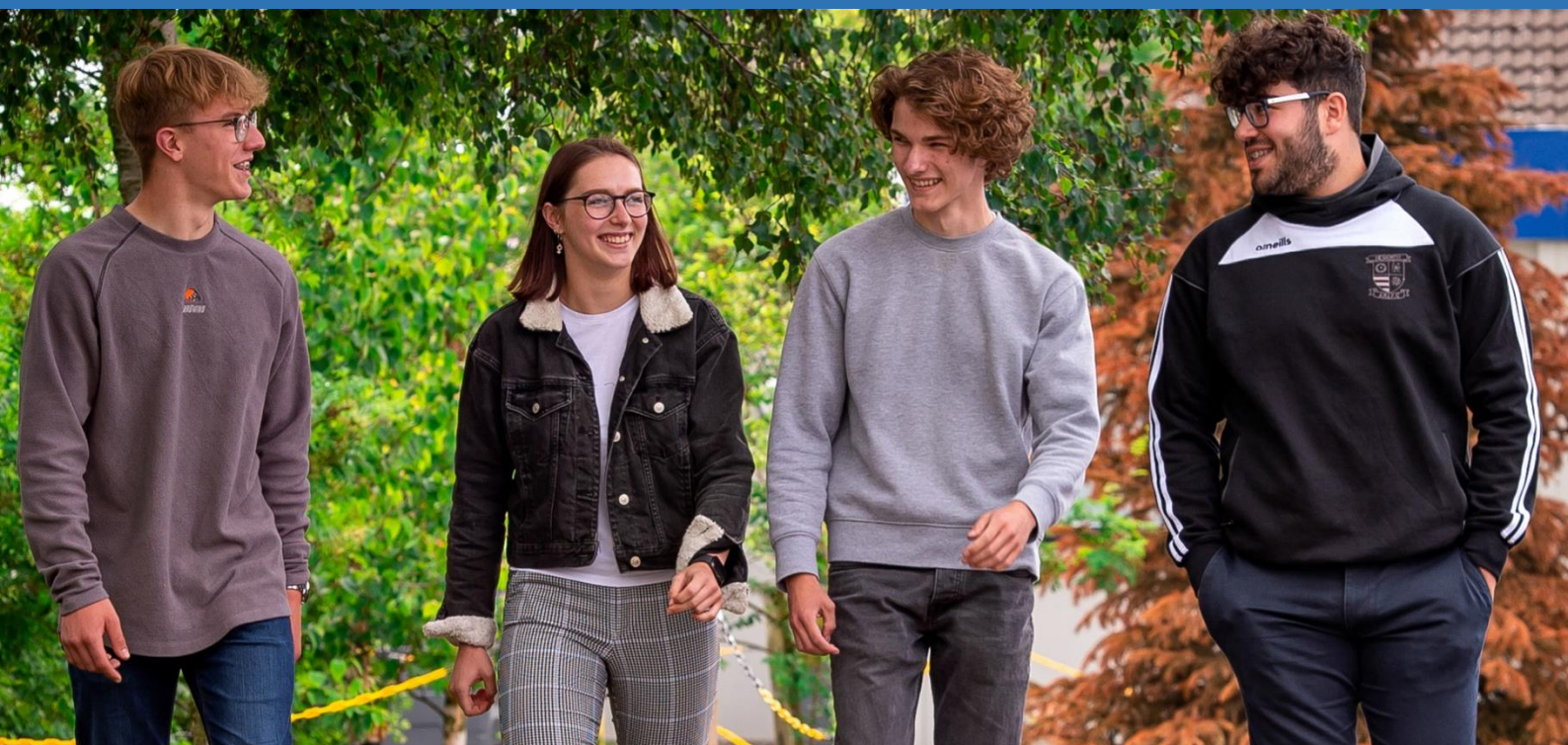
At Huntington School, we believe that people matter most! We believe our school is made a special place by the students and staff who come here together to learn. We believe that positive, respectful relationships between everyone in our school are crucially important in making Huntington an exciting place to study. We think that we have created an atmosphere at Huntington where we can all thrive together, where the conditions for growth are just right.



## SIXTH FORM

*“The sixth form provides an outstanding education. Students are purposeful and confident from excellent careers guidance which ensures that they go on to further study, employment or training that is closely matched to their aspirations” - Ofsted Oct 2017.*

Our outstanding Sixth Form offers excellent learning and teaching, exciting extra-curricular activities and genuine support for each individual student. Our students are constantly challenged to reach the highest possible standards in their work. We offer a huge range of extra-curricular activities including sport, theatre, music, community activities, and charity work. We ask all our students to make a contribution to the school, local or international community and as a result they are looked on as leaders by younger students in school. Our Sixth Form offers a broad range of courses. There is a wide range of A Level and Level 3 courses available. Results are consistently excellent and this enables our students to enjoy great success in higher education and employment. We provide some A-level courses to the nearby Joseph Rowntree School and they provide a Photography course to our students. In 2021 the Sixth Form was awarded ALPS 1.



## RESEARCH SCHOOL

*“The school’s ‘Research School’ status has had an extraordinary impact on teachers’ understanding of how to improve their practice” – Ofsted Oct 2017*

In November 2016 we were officially designated an EEF/IEE Research School, one of only 22 in the country. Since then, the DfE has put EEF/IEE Research Schools at the heart of raising achievement in the most deprived areas in the country. Huntington has been one of the schools at the forefront of making evidence-based practice the norm in schools. As a Research School our core purpose is to:

- Share and disseminate the very best of evidence-based practice to schools and teachers across Yorkshire and the Humber
- Provide evidence-based training
- Host conferences and events
- Support schools and other educational organisations across the region

We are very proud to take a role in supporting the school-led system as part of a dynamic network across the region, including our Associate Research Schools in Sheffield and the Wolds.

Staff value the opportunity to take part in research and all staff undertake an Inquiry Question every year, focussed on improving their practice. We have staff who both teach in school and work in the research school.

*“The school is steeped in research-based practice, which is leading to pupils making rapid gains in their skills, knowledge and understanding” – Ofsted Oct 2017*



## WORKING AT HUNTINGTON SCHOOL

We believe in recruiting the best and then treating them exceptionally well.

Over the last few years, we have implemented working practices which have created a culture where truly great teachers can thrive. Prioritising staff wellbeing; over 50% of our staff work part-time hours; full-time teachers teach 44/50 periods per fortnight, maximum; flexible working arrangements are supported wherever possible; staff can go home if they are not teaching the last period of the day; everyone can take one 'family day' a year fully paid; we provide flu vaccinations for all staff; the staff room has been recently refurbished with better working and rest facilities, increasing ICT provision and fresh coffee after feedback from staff; we have a team of staff from across all areas of school whose remit it is to lead on wellbeing and we dedicate training time to work on strategies to actively improve our wellbeing.

We truly believe that we can all be better professionals and as such CPD for both teaching and support staff is planned and prioritised throughout the whole year, so people know what is happening from the outset.



SCHOOL VALUES

The post holder will subscribe to the notion that *we want all members of our school community to value: Respect; Honesty; Kindness and to believe in the limitless potential of people.*



## Huntington School

*Learn and succeed*

Our core values: **Respect, Honesty & Kindness**



Our school is a **safe, inclusive and welcoming** community that everyone feels proud to be a part of.



We hold **high ambition, positive relationships** and **mutual respect** at the core of our school culture.



Our school develops **confidence, resilience** and **independence** for all by delivering a high-quality, **evidence-informed education**.

*We celebrate our achievements, learn from our mistakes and support each other to be responsible and hardworking citizens.*

We expect teachers to complete all administrative tasks in a professional manner and meet all the Teachers' Standards (updated 2021) as contained in the DFE document found here:

[https://assets.publishing.service.gov.uk/government/uploads/system/uploads/attachment\\_data/file/1040274/Teachers\\_Standards\\_Dec\\_2021.pdf](https://assets.publishing.service.gov.uk/government/uploads/system/uploads/attachment_data/file/1040274/Teachers_Standards_Dec_2021.pdf)

### GENERAL INFORMATION

As with all job descriptions it may be necessary to undertake any reasonable task required, and sometimes at short notice, that is not described here. All staff need to be aware of and practise the current Health and Safety regulations in accordance with Government, City of York, School and Department policies. The post-holder is expected to be part of the whole-school staff team and to be able to use his/her initiative. The ability to respond positively to ever-changing and demanding circumstances is essential.

# JOB DESCRIPTION

## Teacher of Health & Social Care

**PLACE OF WORK:**  
Huntington School

**CURRENT GRADE:**  
MPS/UPS

**REPORTS TO:** Subject Leader of Health and Social Care

### MAIN PURPOSE OF JOB

To secure high standards of learning outcomes for all students through truly great teaching

We want to develop truly great teaching in our school; it is our driving ambition. Consequently, we want to appoint truly great teachers whose teaching leads to improved student progress. We have our own vision of what Truly Great Teaching looks like. It is simple, it is what all aspire to when we teach and it is summarised below:

- Teachers have high expectations of students. Lessons are appropriately challenging and risk taking; they foster curiosity and inspire creative thinking.
- Teachers know the students in front of them. We are flexible and the needs of different groups of students are planned for so that they can all achieve outcomes.
- Assessment is used to progress learning. A range of feedback strategies is used which students act upon to make or exceed expected progress.
- Teaching and learning strategies are used to ensure that teaching is engaging, relevant and purposeful. Time is managed expertly and progress is effectively reviewed. Students are well prepared for the demands of the curriculum.
- Teachers make a positive contribution to school like and live by the school's core values. They demonstrate a range of personal qualities and skills which include: encouragement, intelligence, creativity, reflection, effective communication skills.

- Questioning is used to develop thinking. Open questions are planned to deepen understanding, thinking time and oral rehearsal are built in.
- Behaviour and learning is well managed so that students are able to actively learn.
- Teachers have excellent subject knowledge. Research is key to the development of pedagogy. Time is invested on researching current thinking and good practice.
- High standards in literacy and numeracy are promoted by all teachers and underpin learning in all subject areas.

#### **MAIN CONTACTS & RELATIONSHIPS**

Internal: Parents, Pupils, Staff

External: Parents and carers.

### **PERSON SPECIFICATION Teacher of Health and Social Care**

Criteria	Essential	Desirable	Evidence source
Qualified Teacher Status (or pending PGCE/QTS outcome)	x		Application
Recent experience in an 11-16 school	x		Application
Recent experience in an 11-18 school	x		Application
A good first degree in a related subject	x		Application
Evidence of knowledge and capabilities relating to the teaching KS4 and 5 Health and Social Care	x		Application
Clarity of purpose and a student-centred vision	x		Application Reference Interview
Good personal and interpersonal skills.	x		Reference Interview
Good oral and written communication	x		Application Interview

Good levels of numeracy, literacy and ICT	x		Application Interview
Good time-management and personal organisation	x		Reference
Must support the school's aims and values, setting a good example of attendance, punctuality and appearance	x		Reference Interview
Evidenced up-to-date knowledge of the curriculum and understanding of effective teaching and learning strategies to meet the needs of learners	x		Application Interview
Good knowledge of a range of assessment practices and confident about using data to improve levels of achievement	x		Application Reference Interview
Demonstrate a determined attitude towards life and show great resilience	x		Reference Interview
Must have a great work ethic and enjoy working hard	x		Reference Interview