



INFORMATION FOR CANDIDATES

THE ALICE SMITH SCHOOL
Appointment for August 2022

A history of *innovation*

OUR

Mission

To provide an outstanding British education
for a successful international future

Vision

To lead the pursuit of excellence in learning
through nurturing, inspiring and enriching
the lives and characters of young people

We believe that through generosity of time
and our care and attention to every individual,
we find a way to bring out the best in all people
and create an enduring sense of belonging
to something very special



Introduction

Established in 1946, The Alice Smith School is one of the oldest and most prestigious British international schools in Asia catering for over 1,400 students from Pre-school to Year 13, with approximately 650 at the Primary Campus and 750 at the Secondary Campus. The school is intentionally diverse, welcoming pupils from all over the world, attracted by an outstanding education focused on student success, wellbeing and happiness. A not-for-profit school, Alice Smith is a first-choice school for expatriate families and an increasing number of local families.



1946

The school started in 1946 by Alice Fairfield-Smith at her home in Jalan Eaton, Kuala Lumpur at the end of the Second World War. A biology graduate from Harvard University and an experienced teacher, Alice Smith only had a handful of expatriate children then including her own daughter, Lindsey. Alice Smith's founding ethos of wanting to provide a high quality education for expatriate families living in Kuala Lumpur is still as relevant today as it was over 70 years ago when the school first began.



1950s

When Alice Smith left for America in 1950, the school was officially named the Alice Smith School and passed into the capable hands of Anne Lilly. The Alice Smith Schools Association was formed, placing the responsibility for the administration of the school in the hands of a Council of Governors. The school relocated to Jalan Bellamy in May 1955.



1960s

In August 1960, Alice Smith visited the school and was delighted to see its growth. When she left Malaya in 1950 after running the school for four years, there were only 70 pupils and seven teachers. Returning on a sentimental journey, she was astonished to learn that enrolment had topped 200.



1970s

Under the leadership of headmistress Patricia Lee, the Preparatory building for older students was opened in January 1971. By the end of the year, more classes were being added. Patricia Lee was Principal between 1964 to 1989.



1980s

In 1982, the Primary Campus gym was named, 'The Wilkinson Gym'. Under Mr Wilkinson's consistently active encouragement, the school continued to flourish, and grow in numbers, exceeding 350 students during the 1980s.

In 2010, a new milestone was achieved with the opening of a RM13.2 million four storey gym. The new gym was named 'The Smurfwale Gym' after John Smurfwale, parent and Governor who has a great passion for sports.



1990s

The Alice Smith School held its 50th anniversary celebrations in May 1996. Two years later in September 1998, the school was honoured to welcome HRH The Prince Edward CVO, the youngest son of Her Majesty Queen Elizabeth II of England, for the official opening of a brand-new, purpose-built RM33 million Secondary Campus at Equine Park.



2000s

As the world entered a new millennium in 2000, the Alice Smith School continued to go from strength to strength. The first cohort of Sixth Form students graduated that year, a very proud moment for the school and the students themselves.

In February 2004, the new Library and Sixth Form Centre were officially opened at the Secondary Campus.

A glittering Diamond Jubilee Ball took place in 2006 in conjunction with the school's 60th anniversary celebrations.

2010s

The school was one of the first in Asia to be fully accredited as a British School Overseas (BSO) by the Department for Education in London. In the BSO report in 2014, both campuses were judged to be 'excellent'. Following this successful BSO inspection, the school was awarded full membership to COBIS, the Council of British International Schools. The Alice Smith School is also a founding school of FOBISA (The Federation of British International Schools in Asia).

Thursday, 4th July 2013 was a fitting moment in time in our history, to celebrate the school's first Founder's Day; a day to reflect on and understand the unique story of how the school began. This day also marks the birth of our school's founder, Alice Smith on 4th July 1905.



2016

The school was honoured to welcome founder, Alice Fairfield-Smith's grandson, Cameron and great granddaughter, Rosie to our grand 70th anniversary celebrations. The celebrations reflected on past accomplishments and successes and the legacies left by previous and current generations.

In the same year, the Jubilee Centre opened at the Primary Campus and was awarded GOLD at the Malaysian Architecture Malaysia (PAM) Awards 2016.

In addition, exciting new outdoor facilities at the Secondary Campus opened in September 2016. The Sports Complex includes a world class 8-lane synthetic athletic running track which conforms to the standard of the International Association of Athletics Federations (IAAF), a natural turf football field, a 5-a-side hockey field and a versatile multi-sport playing area accommodating three futsal fields, netball and tennis courts.



2018-2019

Exciting developments continue on both campuses, demonstrating not only creativity and innovation, but also our commitment to providing world class facilities.

The opening of our new facilities at the Secondary Campus involving over 6,000 square meters of extensions in addition to refurbishment to the Humanities, Library & Sixth Form and Indoor Sports blocks further reflect our aspirations as a learning community, raising our ambitions for quality and excellence as a regional and world leader for education.

In support of the wider community, The Alice Smith School Foundation was launched in November 2018. The Foundation supports philanthropic work focusing on five areas of funding: Our Community, Scholarships and Bursaries, Special Educational Projects, Buildings & Facilities and Endowment.



More recently, the school was shortlisted in two categories for the International School Awards 2019, winning the Pastoral Initiative category. The awards recognise and celebrate excellence in educational practice in international schools worldwide. Other notable achievements include being shortlisted for the TES International School of the Year Award in 2015, the British International School Awards (BISA) 2018 and Relocate Awards 2018.

As quoted in the COBIS Patron's Accreditation March 2019 report: "The school is an innovative role model and leader for promoting high quality educational practice as shown by obtaining the UCL IoE gold standard quality mark for professional development. The school promotes a holistic approach where teaching and learning is continually enhanced and is highly personalised for each and every student."

At the Alice Smith School, we are passionate about the difference we make; continuing to innovate throughout our history, innovating in our learning spaces and innovating in our teaching, but most importantly innovating for our students' success.



The level of admissions enquiries remains consistently high and the school continues to operate near capacity despite demographic shifts and an increased number of international schools in Kuala Lumpur and across Malaysia.

Applications are welcomed from exceptional educators who align with the school ethos as well as the perspicacity to understand the differing needs of the expatriate and internationally-minded local families that the school services.

This is an exciting opportunity for enthusiastic, dedicated, caring and hardworking teachers who want to be the best they can be to further develop and augment outstanding educational practice within one of Asia's most successful and highly-regarded international schools.



Alice Smith School offers a British education based on an enhanced English National Curriculum. As a not-for-profit school, it can re-invest its surplus back into the school to ensure students benefit from exceptional resources and a programme of ongoing school development to deliver a high-quality holistic education. It was the first school in Malaysia accredited as a British School Overseas with an Excellent grading in both 2011 and 2014 and in March 2019, received an outstanding COBIS Patron's Accreditation and Compliance Report.

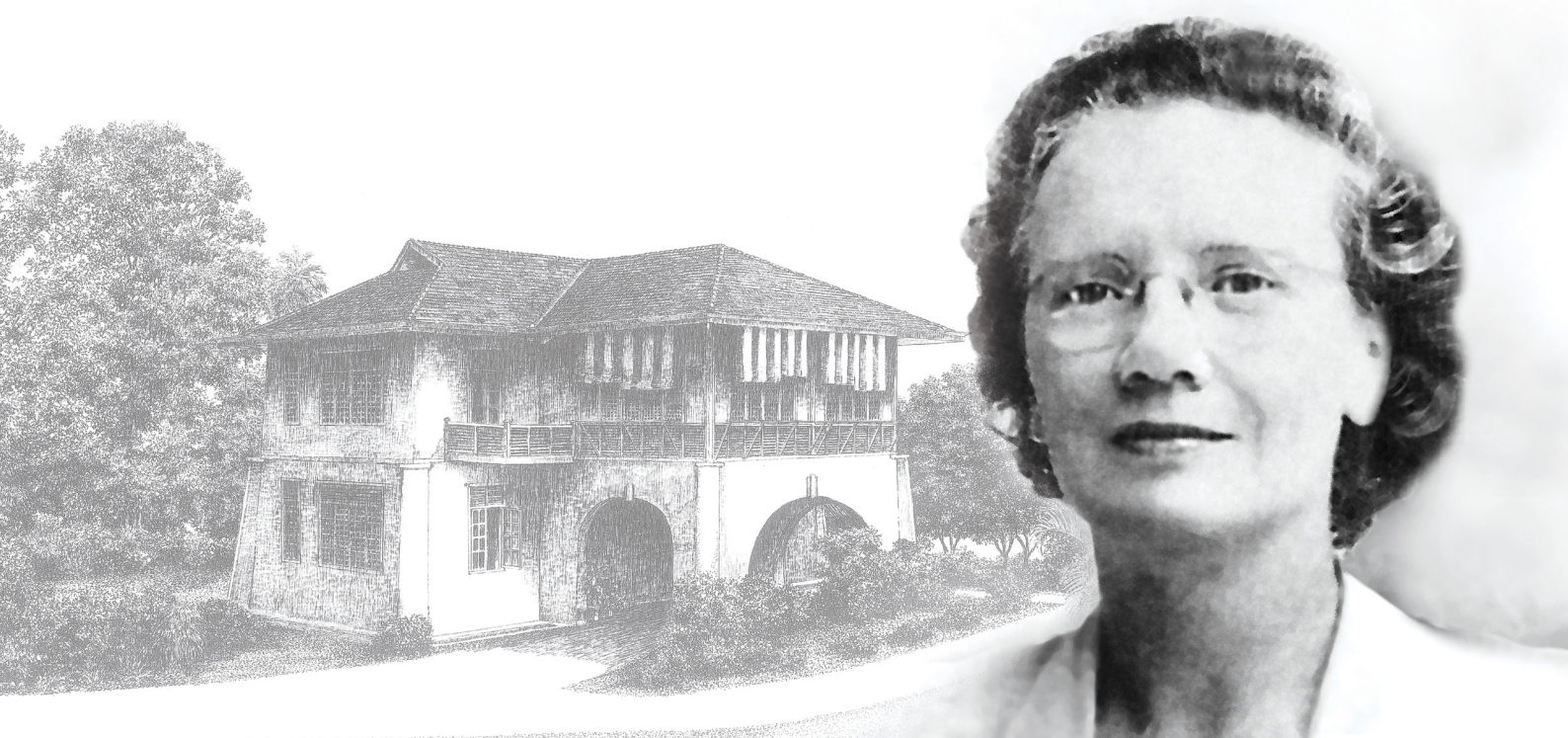
The school is a founding member of the Federation of British International Schools in Asia (FOBISIA), is a longstanding member of the Council of British International Schools (COBIS) and is a member of East Asia Regional Council of Schools (EARCOS). Over 80% of the teachers are from the UK, many have worked in the international school sector and all teachers are experienced in the British educational system.

Alice Smith is the first international school in the world to be awarded the prestigious Gold Quality Mark for Professional Development by the Institute of Education, University College London. The report states:



"The Alice Smith School is a true learning community and is considered by all staff interviewed to be an amazing place to work. School leaders genuinely hold the belief that they can help develop staff

to be the best that they can be and exceptional levels of professional trust exist. The confident, happy, vibrant students interviewed clearly value their school and their staff immensely... The Alice Smith School is an organisation where people can work and grow and where children are at the heart of every strategic decision made."



Heritage

Alice Fairfield-Smith was a biology graduate from Harvard University and an experienced teacher. She started the school in 1946 in her home on Jalan Eaton, with a founding ethos of wanting to provide a high-quality education for expatriate families living in Kuala Lumpur. In particular, the school was established to cater for families from the United Kingdom, Ireland, Australia and New Zealand. Although Alice Smith School is forward-looking, its school character has its genesis in this founding vision and to this day it is expected that these four 'founding nations' will be strongly represented in the overall student body.

Mission

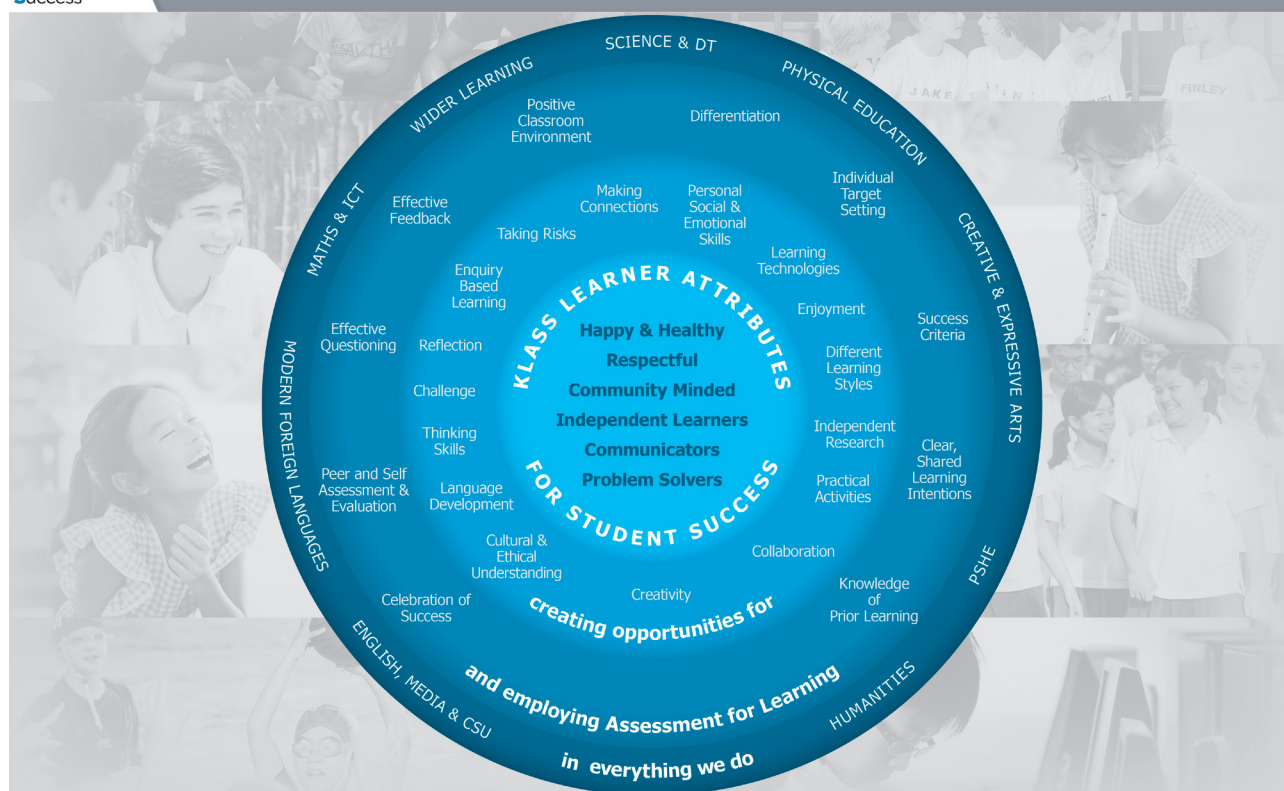
The school develops essential knowledge, skills and understanding to help students achieve their full potential and prepare themselves for the rapidly changing cosmopolitan world of tomorrow. Alice Smith School places a great deal of importance in encouraging students to be successful learners, confident individuals and responsible citizens; supporting them to develop personal values, skills and ways of working with others which are increasingly important to their chances of success in the global workplace and as global citizens.

KLASS Learner Attributes For Student Success

Klass
Learner
Atttributes for
Student
Success

THE ALICE SMITH SCHOOL CURRICULUM

Providing our students with an outstanding British education and developing the attributes for a successful international future



Students are encouraged to lead happy and healthy lifestyles, be respectful and community-minded in their actions and be successful communicators, problem solvers and independent learners. Supporting and caring about the local community is a significant part of school life which involves all students and where many can gain hands-on experience working with and helping those who are less fortunate than themselves.

"A culture of respect and trust underpins learning across all phases and subjects. The quality of relationships is a significant strength, with pupils learning in an environment that is both nurturing and supportive, but also offers rigour and challenge."

COBIS Patron's Accreditation Report March 2019

Our Values In Action

We believe that there is a collective responsibility for all members of our community (students, staff and parents) to ensure that everyone is able to learn and flourish. The following principles underpin our work across the school.

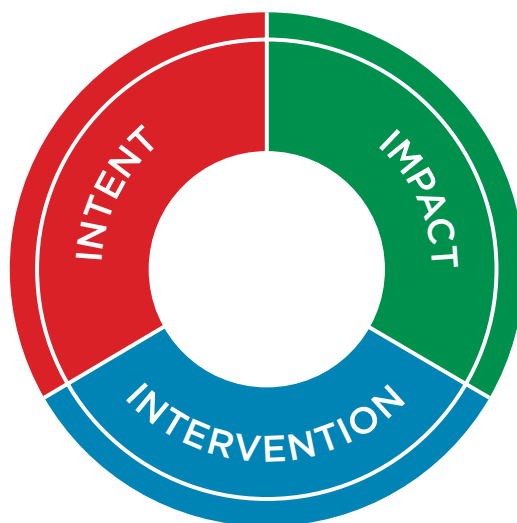
Celebration

We recognise the breadth and depth of meaningful student achievement both in lessons and beyond to:

- make excellence visible to:
 - foster student, staff and parental pride
 - celebrate the high level of attainment, participation and breadth of experience at Alice Smith
- showcase our school's values
- create positive role models and aspirations
- provide an opportunity for reflection and create a sense of journey for students, staff and parents.

Guidance and Restoration

Our expectations for behaviour are high. However, when people live and work together, disputes are inevitable and errors are made. When this happens the following three factors are considered to guide actions:



Positive behaviour is supported by focussing on learning and restorative approaches.

"The school's pastoral structures are very well developed and provide outstanding levels of care and support for students of all ages. Alice Smith School enjoys levels of excellent behaviour across both campuses. Students are respectful, fostering an excellent rapport with their teachers and other staff."

COBIS Patron's Accreditation Report March 2019

A History of Innovation

As an innovative user of technology, Alice Smith is a Google Workspace for Education school working across both Windows and Mac platforms, utilising the power of Google sites, applications and Google Classroom to provide tailored learning opportunities for our students. All teachers and students have access to a broad range of technology to enhance and enrich learning experiences.

The Primary Campus

The Primary Campus at Jalan Bellamy is situated in a pleasant wooded area adjacent to the old Royal Palace. The facilities include two libraries, learning technology suites, a double storey Gymnasium, a 25m swimming pool, music rooms, hall, all-weather artificial turf field and purpose built adventure play areas.

Art, Music, Modern Foreign Languages (French, Bahasa and Mandarin) and Physical Education are specialist taught and pupils enjoy well-resourced classrooms staffed by Year teams of Teachers and Teachers Assistants. The Jubilee Centre comprises a new Dining Hall and One Stop Centre for parents, with admissions, accounts and a uniform shop.

“The provision of resources in all curriculum areas is of a very high standard, with an ample supply of teacher assistants and on-site cleaners to maintain these areas throughout the school day.

Resources are plentiful and in the Early Years and Lower Key Stage 1 dedicated areas for explorative play, practical and quiet activities enable teaching staff to deliver aspirational and innovative programmes of study. The Primary campus has access to two gymnasiums, a swimming pool and an artificial turf outdoor sports area which allow for the full range of games and athletics to be taught. In addition, there are very pleasant planted garden areas where students can meet outside lesson time. Primary campus classrooms are well-appointed and lead onto external and learning areas and play spaces.”

COBIS Patron’s Accreditation Report March 2019



Our Golden Rules

At Alice Smith we believe that certain principles and practices are prerequisites of successful learning and good behaviour. Our values are built on mutual trust and respect for all. The Golden Rules set out the way in which all members of the school live and work together in an environment where everyone feels happy, safe and secure.



“High levels of respect are displayed for teachers and between students, thus creating the conditions and culture that encourage challenge in learning.

Student behaviour is excellent, in and outside of the classroom, and learning takes place in a safe environment, physically and emotionally.”

COBIS Patron’s Accreditation Report March 2019

The Golden Rules are the Primary Campus’s reference for behaviour expectations.

**We are gentle
We are kind
We listen
We are honest
We work hard
We look after property**

Teachers have autonomy to develop a classroom positive behaviour management system that enables them to provide a safe and productive learning environment.

At the start of each year, using the school’s Golden Rules, all classes develop their own Class Code of Conduct, giving the students a voice in what positive behaviour looks like in the school and facilitates all to have a shared language of expectations, thus enabling all to take collective responsibility for it.

Learning and Teaching

At the heart of what we do is to share a love of learning where children are guided to be independent, confident, happy and successful learners for all of their time with us and beyond.

The building blocks of a high quality, holistic education start with our Early Years qualified teachers, whose expertise brings out the best in children no matter their starting points or interests. They use approaches aimed to ensure each student is extended, supported, engaged and enthused. They understand the importance of the three prime areas of development at this age - social and emotional development, physical development and the development of communication skills, and how these are the early skills necessary for future success in reading, writing, maths and ensuring positive attitudes towards themselves as learners.



Teachers and students individualise the learning journey using a wide range of tools, ensuring that the starting point is appropriate for each student. Our clear Assessment for Learning (AfL) expectations and monitoring tools support students and teachers to track progress, evaluate learning and plan for next steps.

*“A culture of respect and trust underpins learning across all phases and subjects.
The quality of relationships is a significant strength, with pupils learning in
an environment that is both nurturing and supportive,
but also offers rigour and challenge.*

*There is a genuine, robust and all-pervading sense of a partnership for learning -
in its widest sense - strongly evident in the school.”*

COBIS Patron’s Accreditation Report March 2019



Our end of year assessments for Reading and Maths are set by one of the UK's leading test providers, 'GL Assessments'. They provide in-depth data in the form of a Standard Age Score (SAS), are key to benchmarking and tracking progress and a good indicator of depth of understanding when used alongside teacher assessment.

Attainment in Year 6 is excellent based on teacher judgements, demonstrating that all of our Year 6 students are working within or in some cases beyond the expected developmental band in Mathematics and English. This is supported by the GL Progress Tests in English and Mathematics which show that on average, one in five Year 6 students exceed the expected end of year bands for English and Mathematics.



Wider Learning

Whilst academic excellence is the hallmark of an Alice Smith education, the school offers a wide variety of sporting, artistic and cultural extra-curricular activities and a broad range of residential expeditions and trips for all students. The enriched extra-curricular, expedition and wider learning programme is extensive.



Students have many opportunities to participate in a wide range of sports using the school's world-class facilities. The students are successful, as individuals and teams, competing at the highest level locally and regionally. Sport for all ensures the core life skills of commitment, teamwork, selflessness, cooperation and leadership are an integral part of everyday life at Alice Smith School.



The Secondary Campus

The Secondary Campus at Equine Park is a beautiful purpose-built campus on 25 acres of land with excellent facilities including an IAAF certified track and field sports complex, Olympic specification 50m swimming pool, a large air-conditioned sports hall, newly renovated and expanded teaching and learning areas for English, Languages, Mathematics, Humanities and Science, purpose-built specialist learning areas for Art, Music, Drama and DT, extensive ICT resources and an extensive library.



“The Secondary campus facilities are generous and exceptionally well resourced. Ample provision is made for sports, dance, drama, music and the arts. Well-appointed computer suites, libraries and common room areas for the sixth form ensure that students have opportunities to self-manage learning and relaxation outside dedicated teaching periods. Many classrooms have adjoining doors and are surrounded by break-out spaces which can enhance the learning experience in a variety of effective ways.”

COBIS Patron’s Accreditation Report March 2019



Secondary Values Charter

We believe that successful self-regulated learners demonstrate and continually develop our learner attributes to be *Happy and Healthy, Respectful, Community Minded, Independent Learners, Effective Communicators and Problem Solvers* throughout their lives. In order to allow our students to develop these attributes to their greatest extent, a supportive and stimulating climate is required.

Sustaining such a climate requires a blend of many components; above all we regard most highly our five core values which guide our actions and interactions, and build and sustain a climate in which everyone can learn and flourish:

Connectedness - Kindness - Respect - Integrity - Resilience

Our charter defines our collective understanding of these values and outlines how we expect all members of our community (students, teachers, non-teaching staff, parents and guardians) to exemplify them in words and actions. We believe that in order to achieve this everyone in our community is granted **rights** and accepts **responsibilities** which uphold these values in order that they may continue to develop the learner attributes and support others to do the same.

“High levels of respect are displayed for teachers and between students, thus creating the conditions and culture that encourage challenge in learning.

Student behaviour is excellent, in and outside of the classroom, and learning takes place in a safe environment, physically and emotionally.”

COBIS Patron’s Accreditation Report March 2019

ACHIEVE

ACHIEVE stands for seven empirically validated elements of wellbeing and essential skills which together describe a flourishing individual.

Bring **awareness** and **attention**:
take notice,
develop focus,
self-awareness
and gratitude



Nurture thriving **connections**:
learn about
relationships,
friendships,
social skills,
peer support
and **coaching**

Be **happy** and **healthy**:
health education,
physical activity,
positive choices
and managing
stress



Be **independent**:
habits for learning,
research skills,
careers and
Higher
Education

Develop positive **emotion**:
optimism,
locus of control,
self-assuredness
resilience and
growth mindset



Bring **value** to
others:
service learning,
community,
Houses,
benefit mindset

Be **engaged**
and **enriched**:
follow and nurture
passions,
wider learning,
flow (in the zone)



The Achieve programme is instrumental in driving our commitment to the development of KLASS Learner Attributes by ensuring that the wider aspects of every student's development are addressed through the academic curriculum and a dedicated programme of learning experiences.

This combination of experiences is bespoke to Alice Smith; each one being tailored to suit our students' needs, strengths and preferences with the aim of nurturing wellbeing, character, personal awareness and self-confidence within a challenging, vibrant and supportive environment.

Learning, Teaching and Academic Outcomes

Alice Smith has a reputation for academic excellence and results are consistently outstanding. In June 2021, 67% of all A level grades were A* or A and 82% of grades achieved being A*, A or B.



These results are even more remarkable when you consider that Alice Smith is not a highly selective school, unlike many other UK independent and international schools. Absolute academic attainment is far better reflected by the Value Added score of 1.06 for our A Level students. Through a supportive and innovative learning environment and excellent teaching, the school has added, on average, one attainment grade per subject to all students.

"A strength of the Secondary campus relates to teacher subject and curriculum knowledge that supports a structured approach to learning that underpins academic success in public examinations.

A culture of learning and high performance is embedded across all phases and subjects, with ambitious expectations for all students.

A strength of the lessons observed are the high expectations set by teachers. They employ questioning effectively to challenge and stretch their students. Student self-reflection and peer assessment are well embedded in the classroom. Students have a belief in themselves to succeed and can recognise the steps required to make progress."

COBIS Patron's Accreditation Report March 2019

In Years 10 and 11, (I)GCSE courses from several different exam boards are offered, some of which express results as number grades (9 to 1) with one other (Cambridge - CAIE) continuing to use their equivalent letter grades (A* to G).

For June 2021, when considering equivalent grades, 60% of all grades were awarded A*/9/8, with 77% A*-A/9-7 band, 97% in A*-B (9 - 5) band and 99% in the A*-C (9 - 4) band. Of numerical grades, 39% were 9s (equivalent of an A** grade) .

The Value Added score was a remarkable 2 grades for (I)GCSE students.





University Admissions

Most students matriculate to universities in the UK, although with some opting to study in other countries throughout the world. Over twenty students have attended Oxford or Cambridge in the last six years and in 2020, over 90% of the school's students gained a place at their first choice of course and university.

"The support sixth form students receive is excellent. They receive clear guidance and advice which assists them to make sensible subject choices linked to their achievements to date, aspirations and university choices."

COBIS Patron's Accreditation Report March 2019

Almost all students (95%) from the KLASS Year 13 Class of 2021 will be attending their first choice of course and university for higher education. 17% are attending Times Top 30 World universities and 73% are attending a top university or top course worldwide including 60% at prestigious Russell Group institutions, such as the University of Cambridge, Imperial College London and LSE. In the US, Alice Smith students secure places at top US colleges including the likes of Yale University and Brown University, both members of the elite Ivy League.

Wider Learning



Whilst academic excellence is the hallmark of an Alice Smith education, the school offers a wide variety of sporting, artistic and cultural extra-curricular activities and a broad range of residential expeditions and trips for all students. The enriched extra-curricular, expedition and wider learning programme is extensive and includes the Duke of Edinburgh Award Scheme and Model United Nations.

“The school provides a rich variety of high quality Extra Curricular Activities (ECAs) and these are popular with both students and parents.

Sporting ECAs are offered and students can enjoy team competitions or simply the enjoyment of physical activity. Equally, there are plentiful opportunities for students to develop creativity through ECAs. The programmes most definitely are enhancing the skills development of students and enrich the curriculum on offer at Alice Smith School. “

COBIS Patron’s Accreditation Report March 2019

Students have many opportunities to participate in a wide range of sports using the school’s world-class facilities. The students are successful, as individuals and teams, competing at the highest level locally and regionally. Sport for all ensures the core life skills of commitment, teamwork, selflessness, cooperation and leadership are an integral part of everyday life at Alice Smith School.

Living and Working in Malaysia

Malaysia is a multi-cultural and multi-ethnic country of indigenous Malays, Chinese and Indians, alongside expatriate residents from a range of countries. These different cultures make for fascinating diversity in religion, cuisine, celebrations - there are numerous Public Holidays! - and architecture.



Situated in South East Asia close to the Equator, Malaysia has a tropical climate which is warm and humid throughout the year. Bahasa Malaysia is the official language, but English is widely spoken and is used extensively in business. There are over 130 different languages/dialects spoken. Kuala Lumpur is Malaysia's capital and biggest city as well as its economic, financial, industrial and cultural heart. Kuala Lumpur is a city with modern amenities, good healthcare and a high standard of living. Although it is a fast growing modern global city with iconic architecture, such as the Petronas Twin Towers and the KL Tower, it is also a green city which is surrounded by lush plantations.

The temples, shrines and mosques, as well as the colourful coffee shops and market stalls, all serve as appealing reminders of Kuala Lumpur's religious and cultural diversity and its proud history. Malaysians have welcomed traders to their shores for centuries and this friendliness continues to this day.



Food is an essential part of Malaysian culture and many locals joke that eating is Malaysia's national sport; the country's ethnic mix has resulted in a wide range of flavours and culinary traditions. Kuala Lumpur is a gastronomic hub catering to all tastes and budgets, from the hawker stalls serving delicious local dishes at very affordable prices to high-quality international restaurants. Kuala Lumpur is known as a shopper's paradise with a variety of megamalls, markets and retail outlets. Many of the shopping centres also have cinemas, bowling alleys and other activities to keep children (young and old) entertained. For outdoor entertainment, there are a lot of green spaces, as well as a variety of other 'parks', including for various sports, theme parks, amusement parks and wildlife parks.



Getting around Kuala Lumpur is easy, either by taxi or public transport, and it is an excellent travel hub for those who want to make the most of living in the country; it is relatively affordable to spend time exploring Malaysia's islands, beaches, rainforests and towns. Travelling to other destinations in South East Asia is easily done. Malaysia has something for everyone. It has a well-deserved reputation for being an open and friendly place to live; the ease of transition into local life and stunning natural beauty of the country make it easy to understand why the 2017 InterNations survey of over 8,000 expats found Kuala Lumpur to be the best city in Asia to live.

More Information about Kuala Lumpur and Malaysia

Malaysia is made up of two distinct regions of East and West Malaysia with the modern city of Kuala Lumpur as its capital. The nation comprises a confederation of 13 states and the two Federal Territories of Kuala Lumpur and Labuan.

Malaysia is a constitutional monarchy headed by a Yang Dipertuan Agong (King) and practices parliamentary democracy governed by a Cabinet and headed by a Prime Minister.

Political and economic stability has been a primary consideration of the government of the day which is why Malaysia has enjoyed a stable political and economic climate for decades. Malaysia has had a good record of maintaining law and stability and is one of the safest countries to live or work in, in this part of the world.

Geographically, Malaysia is situated north of the Equator and temperatures range from the mid-20s to mid-30s °C nearly all year. The humidity level also remains high year-round but most people acclimatise quickly and do not find the heat a problem. Whilst better known for its production of palm oil, rubber, tin and timber, over 50% of GNP is now from the manufacturing sector as the country becomes increasingly industrialised and reliant on manufacturing and the tertiary sector, as opposed to the traditional agricultural base.

The Malaysian Ringgit is the standard unit of currency.
(August 2021: approximately RM5.6 = £1 - subject to some fluctuation).

The country's religion is predominantly Islam, but there are strong Christian, Hindu and Chinese traditions in many communities. The population is mainly Malay, with significant Chinese and Tamil minorities. Freedom of worship is practised. As a result, it is common to see temples, mosques and churches within the same area.

The National Language is Bahasa Malaysia (Malay) but English is very widely spoken and is taught in schools.



Culture

It is important to be able to develop a cultural sensitivity to the country. While this is a modern, go-ahead place, traditional values predominate in all local communities. There is a terrific respect for family and family values. People avoid confrontation and shows of negative outward emotions such as anger. People will seek to come to terms with differing points of view, which then become synthesised rather than confront each other directly. Attitudes towards sexual relationships are less liberal than you would find in a western country.

The use and sale of illegal drugs provokes a severe response from the authorities. There are certain customs you will learn if you come to live in Malaysia and in general restrained and polite behaviour is valued by all sections of the community. This is something that needs to be respected and reflected in our own behaviour as guests here. Also, as guests in this country, expatriates are required not to take part in any local or national political activity.

Living in Malaysia

Overall, the cost of living is cheaper in Malaysia than in the U.K. and on occasions can be considerably cheaper. For example, the cost of general goods and services such as petrol, domestic help, taxi fares, hotel meals and hotel accommodation is considerably less than in the U.K. Supermarket prices are broadly equivalent to the UK. Local food products are very cheap and of good quality, but as is understandable imported items such as dairy products are more expensive. Many British and Australian products are available in the supermarkets. Alcohol is quite heavily taxed and is more expensive than the U.K., in general.

New and second-hand cars are relatively expensive compared to the UK, but hold their price much better, and resale is relatively easy. Accommodation is also less expensive, and the rental allowance provided will, after tax, cover the cost of a comfortable apartment in a condominium with pool and other facilities, or a link (terraced) house. Running a car is relatively inexpensive with very reasonable petrol prices and garage services are very cheap. This price is subject to change based on the monthly announcement by the Malaysian government. Driving is on the left-hand side of the road and the quality of major freeways and highways is very good.



Kuala Lumpur

Commonly referred to as KL, Kuala Lumpur is highly regarded as one of the best cities in the world to live and work in as an expat and was recently ranked fourth out of 59 countries as the best destination for expatriates according to the [Expat Insider 2021 survey](#). Malaysia fared exceedingly well in the Cost of Living Index where it placed second after Vietnam.

Over the last 10 years KL has been transformed into a modern thriving metropolis with spectacular buildings like the [Petronas Towers](#). Unlike many Asian cities, KL still has many beautiful old buildings from a bygone era, green areas and friendly charm.

The city environment is a unique blend of old colonial architecture, Asian culture and new development where Chinese tea houses, Indian shops and Malay hawker stalls line the streets next to world-class hotels and super hi-rise office blocks. Malaysia/KL is a gourmet paradise with its exciting blend of Chinese, Malay, Indian and Western cuisine. KL's extensive [shopping](#) malls, [markets](#) and local shops will definitely unleash the hidden shopper in everyone!

Leading coffeehouse chains such as Starbucks and Coffee Bean have a large number of sidewalk and indoor outlets. Other popular UK based chains are also widely represented in KL, including Marks and Spencers, Body Shop, Zara, Next, Top Shop, Tesco and a huge IKEA!

You can experience the rich culture of historic Kuala Lumpur through its art galleries, [diverse architecture](#), craft centres and [cultural attractions](#). Go sightseeing and view KL from the top of KL Tower or take the kids to one of several [theme parks](#) around the city. Take time out for [golf](#), or explore the [national parks](#) near the city.

KL is a very family orientated city with plenty of attractions to keep the kids happy. There are several theme parks around the city outskirts which provide accommodation as well as entertainment areas.

KL has a remarkably varied nightlife. Music clubs, Karaoke lounges, jazz bars, pubs, discos, dance clubs, wine bars and funky restaurants are all over the city, catering to an affluent and sophisticated young local crowd as well as visitors.

Opportunities for travel are superb, with Singapore and Bangkok just a short and affordable flight away. Internal flights to the East Coast and to Borneo are very affordable, whilst travel to Hong Kong and Australia is also very reasonably priced. Malaysia itself has a fascinating variety of environments, from the cool Cameron Highlands with mountains, waterfalls and tea plantations, to [coral Islands](#) and coastal resorts, the National Park [Taman Negara](#) with its jungle treks and white-water rafting and historic towns such as [Malacca](#). Many of these are accessible by car for weekend trips.

For those who love to travel, Kuala Lumpur acts as a gateway to destinations all over South East Asia. It is also the base for Air Asia, Malaysia's low-cost airline with cheap flights to over 85 destinations in and around Asia.

Medical Facilities

The country has a very efficient health system where medical services are provided at nominal cost. Private doctors, clinics and also hospitals of international standards are easily obtainable at very reasonable cost. Malaysia is also becoming a centre for medical facilities and medical tourism in the region. Most doctors and dentists are U.K, U.S, Australian or New Zealand trained.

Malaysia's medical services are among the best in the region. To seek medical attention, however, foreign visitors have to visit private hospitals or clinics. Private clinics and hospitals are abundant around the country. They can be found in the shopping malls, or among the rows of shop houses, business complexes, nearby residential areas and others.

A common question newly arrived expats tend to ask is about drinking water. Tap water is safe to drink in major towns or cities. In rural villages it is recommended to drink only bottled water. However, most Malaysians in towns and villages make it a habit to boil their water. Mineral or bottled water is available everywhere.

A high standard of food hygiene is prevalent in Malaysia and those involved in food preparation are subjected to Health Ministry controls. Food handlers undergo regular screening against diseases.

However, visitors are encouraged to patronise only clean stalls and avoid places that do not observe proper hygiene. It is also advisable to eat freshly prepared food or hot, steaming food.

Medical Insurance for Teachers

All our teaching staff are covered by the BUPA International or any other insurance company appointed by the school.

Some of the Established Private Hospitals

- Prince Court Medical Centre, website: www.princecourt.com
- Pantai Medical Centre, website: www.pantai.com.my
- Sime Darby Medical Centre, website: www.simedarbyhealthcare.com
- Gleneagles Intan Medical Centre, Kuala Lumpur, website: www.gleneagleskl.com.my

Useful Websites

- <http://www.visionkl.com/>
- <http://www.kualalumpur.com/>
- <http://travelmalaysiaguide.com/>
- <http://www.expatkl.com/>
- <http://www.lonelyplanet.com/malaysia/kuala-lumpur>



THE ALICE SMITH SCHOOLS ASSOCIATION (001923-A)

Primary Campus

No. 2 Jalan Bellamy
50460 Kuala Lumpur
Malaysia
Tel +603 2148 3674
Fax +603 2148 3418
Email admissions.jb@alice-smith.edu.my

Secondary Campus

No. 3 Jalan Equine, Taman Equine
43300 Seri Kembangan
Selangor Darul Ehsan, Malaysia
Tel +603 9543 3688
Fax +603 9543 3788
Email admissions.ep@alice-smith.edu.my



www.alice-smith.edu.my

