



TAIPEI EUROPEAN SCHOOL RECRUITMENT INFORMATION

Taipei European School

★ Swire European Primary Campus
99 FuGuo Road, Shilin District, Taipei 11158,
Taiwan R.O.C.

Swire European Secondary Campus
31 Jianye Road, Shilin District, Taipei 11193,
Taiwan R.O.C.

☎ +886-2-8145-9007

🌐 www.taipeieuropeanschool.com

Vacancy Information

Job Vacancy: Deputy Head of British Secondary and High School Section
Job ID: 2018-1235

Effective Date: August 1st 2019

Department: British Secondary and High School Section

Location: Swire European Secondary Campus

Application Deadline: November 26th 2018

Taipei European School welcomes applicants for Deputy Head to commence in the British Secondary and High School Section of Taipei European School in August 2019. The position has become available following the promotion of the Deputy Head.

We are looking for candidates whose dynamism, commitment, energy, professional expertise and experience qualify them to take on this exciting and challenging role. The successful candidate will be an excellent teacher, communicator, capable and inspiring leader and will fully understand the commitment required of all staff in our busy and unique school.



Taipei European School

In the heart of Taiwan's capital city, Taipei European School (TES) offers educational excellence, and European culture and values set in the context of Taiwanese society. The simplest way of describing our school is as 'a piece of Europe in Taiwan'.



Taipei European School is comprised of four sections: British Primary, French, German and the British Secondary and High School. It is home to 1,700 students and 400 staff members from 50 different nationalities.

The unique nature of our school is founded in its diversity. Around the school, students from different sections can be heard chatting and interacting in English, French, German and Chinese. In essence, it is the celebration of our differences, but also the love of our commonalities, that make TES a special school community.

TES provides quality education for international students from age 3 to 18 – students can start with us in kindergarten/nursery and stay until they are ready to go to university. TES is a non-profit organisation that operates a 180-day calendar running from mid-August to mid-June. The school year is divided into three terms: summer to winter, winter to spring, and spring to summer.

We operate on two campuses: Swire European Primary Campus at Fuguo Road, ShiLin, and Swire European Secondary Campus at JianYe Road, Yang Ming Shan.

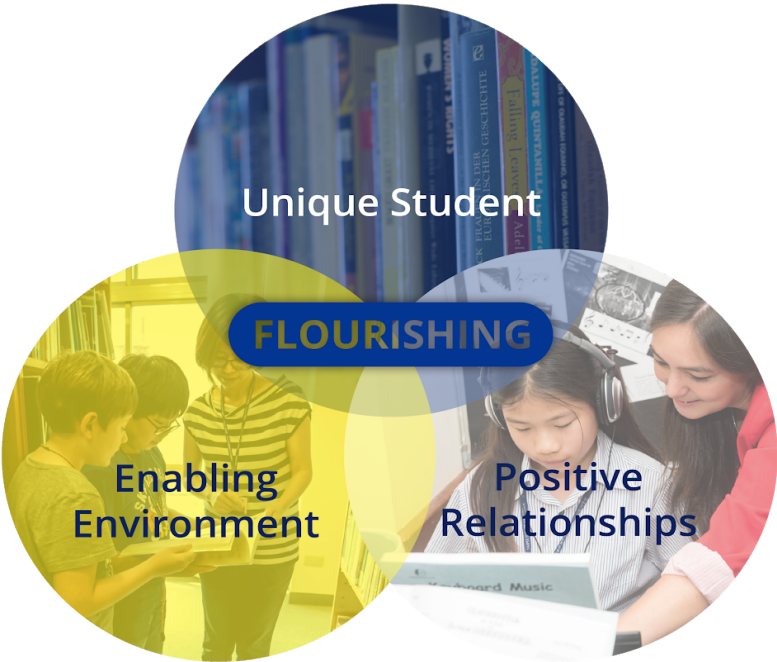
Our growing reputation in Taiwan and Asia has seen demand for places reach record levels. We are hugely proud of the fact that our graduates consistently win places at universities that are among the best in the world.

At TES, excellence in education is at the forefront of our objectives. We provide a rigorous yet nurturing environment in which our students are challenged to become responsible, culturally-rich, well-intentioned global citizens who are able to contribute positively to the world they will inherit. We create opportunities within and outside of the classroom that allow our students to develop enquiring, challenging and open minds.

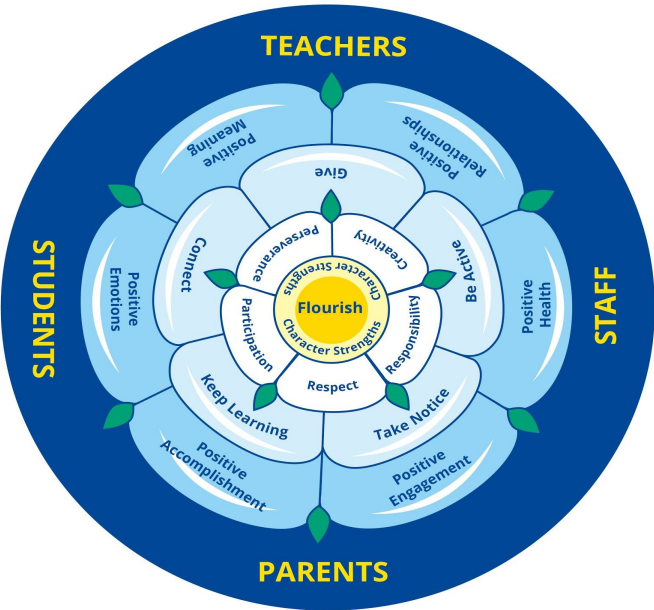
At TES, we consider the whole child. We aim to provide the foundation and structure that will allow each child to develop a love of learning that will stay with them throughout their life. We pride ourselves in giving young people the environment they need to learn, develop their confidence, and ultimately, to grow as individuals. By creating a learning environment that promotes critical thinking, creativity and independence, TES students are prepared for the brightest of tomorrows.

British Secondary and High School

The British Secondary and High School Section provides a world class, dynamic learning environment for students. We endeavor to create the conditions for flourishing by cultivating academic excellence and wellbeing together.

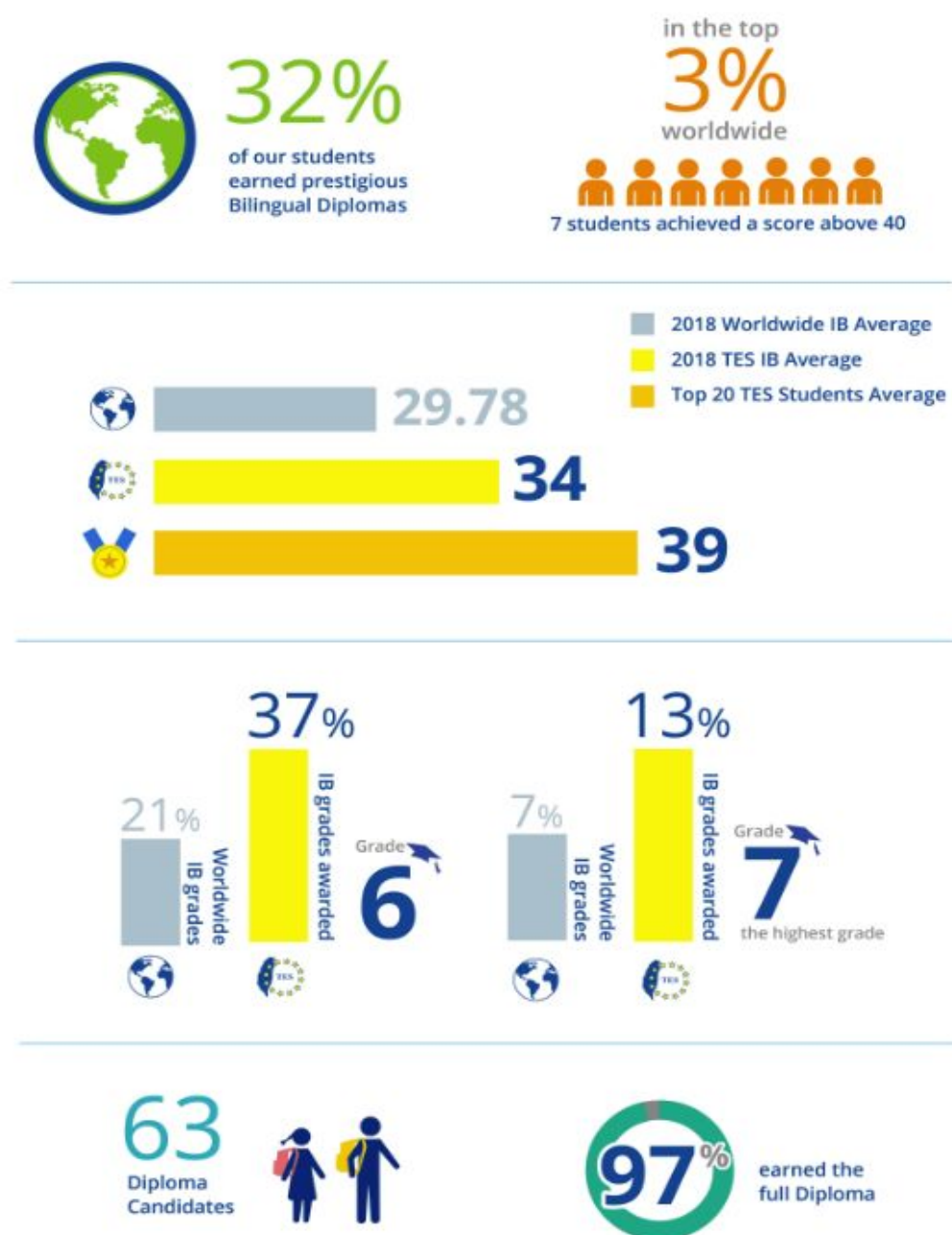


Positive Education in the British Secondary and High School



The wellbeing of its students is something the British Secondary and High School takes very seriously. Students learn about the science of wellbeing (Positive Psychology) through the Core (PSHCE) curriculum. A number of special events throughout the school year have a wellbeing focus. Students are taught the 'Five Ways to Wellbeing' (Connect, Be Active, Take Notice, Keep Learning and Give) alongside the School Values of Respect, Perseverance, Creativity, Responsibility and Participation. Students also spend time exploring their character strengths, as well as their mental toughness, as they learn more about themselves as individuals. Strategies are put in place to further develop their strengths, as well as develop confidence and, in turn, their mental toughness. The aim is to allow all students in the school to flourish and be the best they can be. The Positive Education movement which underpins the school's wellbeing strategy has shown that by adopting the six-step PERMA (Positive Emotions-Engagement-Relationships-Meaning - Purpose-Accomplishment and Health) model, students will achieve improved wellbeing, as well as improved academic results.

Academic Results - IGCSE and IB



As part of our commitment to developing the whole child we place particular emphasis on service and values. Students are involved in a range of service activities in Taiwan and throughout Asia to help those most in need. These programmes develop leadership, empathy, responsibility and teamwork skills in our students. Our TES values of Participation, Respect, Responsibility, Creativity and Perseverance are embedded in the day to day life of the campus.

We are enormously proud of this school and the high quality education on offer. Students thrive, and in fact flourish.

TES Community

Our growing reputation and image in Taiwan and across Asia has seen demand for places reach record levels, particularly in our Secondary and High School. We are hugely proud of the fact that our graduating students consistently win places at universities that are among the best across the world.

We feel that this “school as a village rather than a city” approach is best for our students, as in a village everyone knows each other and works together for the benefit of the entire community. For this reason, enrolment growth will be carefully controlled into the future so that we will always be in a position to personally know and support each of our students.

Future Opportunities and Challenges

The school has undergone a period of rapid expansion, with enrolment growth across all sections. This has created a demand on facilities. The European Secondary Campus has embarked upon a multi-million dollar building development, with the first phase set for completion in 2019-2020. This will provide world class facilities for our students.

The current restructuring of the central administration system, and the review of the Board and governance structures within Taipei European School creates the opportunity for us to establish a clear strategic plan for the future of Taipei European School, and with this, the British Secondary and High School Section’s place in a “one school” approach.



Our Staff

TES employs almost 500 full and part-time staff. They come from all over the world, though the largest number of teachers in the British Sections are from the UK - bringing considerable experience with the English National Curriculum. A significant number especially support staff, are recruited locally. We have a wealth of experience in the IB Diploma and we invest heavily in ensuring IB teachers are trained and kept abreast of the latest developments in their subject area. We are fortunate to have examiners, course leaders and curriculum writers on staff.



Leadership Structure

The CEO leads TES (all four sections and Central Administration). Each section is led by a Section Head (each Head reports to the CEO). A professionally staffed Central Administration team provide strong support for school facilities, operations and development in the areas of Human Resources, Marketing and Admissions, Property, Information Technology and Finance.

Finance

TES is financially strong, and finances are managed by the Chief Administrative Officer, who reports to the CEO. We are very proud of our status as a non-profit organisation, as all funds generated at the school are reinvested into supporting the school's further development of teaching and learning. We receive no government grants, therefore the majority of income to the school is with school fees.

Accreditation

Taipei European School (TES) is fully accredited by two of the world's leading accreditation bodies: the Council of International Schools (CIS), based in Europe, and the Western Association of Schools and Colleges (WASC), based in the USA. This joint accreditation is evidence of our commitment to academic excellence.

TES is authorised by the International Baccalaureate Organisation to deliver the IB Diploma Programme and is classed as an IB World School. We are also a recognised Cambridge International Examinations Centre (CIE).

TES is a member of FOBISIA (Federation of British International Schools in Asia). FOBISIA is a membership association founded in 1988. FOBISIA aims to promote a British style education system in schools throughout Asia and gives students the opportunity for collaboration and friendly competition through its annual sporting, musical and other events. Today FOBISIA has 52 member schools from all of the major Asian countries. All FOBISIA schools must hold at least one of the accreditations above and schools can only join the Federation by way of a vote from a member school at the Regional Heads Conference. TES was one of the very first FOBISIA schools.



The Person

This is a fabulous opportunity for an established and experienced leader to join our unique school. An approachable and inclusive leader, with a passion and vision for future focused education will enjoy working in the British Secondary and High School. The ideal candidate will lead and inspire by building strong relationships with staff, students and our community.



Attainments required:

- Up to Masters Degree as minimum.
- At least 10 years in teaching (ideally with experience in the International Baccalaureate and/or the English National Curriculum).
- A minimum of 3 years in a senior leadership position as a Deputy Head or Assistant Head, committed to delivering excellence in education (academics, wellbeing, co-curricular activities, student leadership).

Attainments preferred:

- A Masters in Educational Leadership or similar field.
- Previous Deputy Head of Secondary and High School experience.
- Experience leading curriculum design/innovation.
- Experience in leading/innovating school operations.
- Previous experience working in Asia.

Personal Traits required:

- A student-centred approach.
- Belief in holistic education - cultivating academic achievement and wellbeing alongside one another.
- excellent listener.
- Strategic thinker
- Fair and consistent, building cohesion among teams.
- Demonstrates initiative and carries through vision. Shows perseverance day to day and for the long run.
- Evidence based, research driven approach
- Diligent and efficient.
- Strong public speaker who is optimistic and motivating.
- Promotes a positive ethos and staff culture within school.
- Knowledge of one's own character strengths and how to utilize them effectively.

Personal Traits preferred:

- Sense of humour.
- Good judgement.
- Kindness.
- A spirit of curiosity.
- A love of Learning.

Life in Taipei

Enjoy living in Taiwan, as its friendliness, clean air, safety, health care system and the overall quality of life have helped put it above the likes of the U.S., Australia and Hong Kong as the best place in the world for expats to live.

Taipei is a developed, vibrant city of around three million people. Described earlier this year by the International Herald Tribune as the "world's most underrated capital city", it is not especially large by Asian standards and rather less congested and polluted than most other Asian cities. The city offers many opportunities for recreation, both sporting and cultural. It enjoys many theatres, nightclubs and concert halls, museums and temples, and an active social life can be led. Its restaurants are remarkably varied and offer outstanding cuisine. The mountains surrounding Taipei offer a quick and scenic getaway, and the rest of Taiwan and its surrounding islands are well worth exploring. As a country, Taiwan is also well situated for excursions to other attractive locations in S.E. Asia such as Thailand, Vietnam and Malaysia.

The people of Taiwan are extremely friendly, helpful and interested in foreigners. The expatriate population is smaller than in some other Asian cities, but the community is close-knit and welcoming to newcomers. As a city, Taipei is a safe place to live, where teenagers can enjoy a considerable degree of independence. There is excellent public transport, both in Taipei and across the island with the newly opened high-speed rail system. English is widely spoken, particularly among the younger population.

Both campuses are located towards the northern edge of the city.



How to Apply

The deadline for the receipt of applications is **(CST) 6.00 p.m. on Monday, 26 November 2018.**

An initial Skype interview will be followed by a three day interview schedule **Monday, 3, Tuesday 4, and Wednesday, 5 December 2018.**

Applications

Your application should consist of:

- A completed application form and supporting statement.
- A covering letter and CV.

As an employer committed to safeguarding the welfare of children, it is necessary that when completing your application form there are no gaps shown in your career history. Any breaks of service must be accounted for.

Police Checks

We are a school committed to child protection and expect all adults on our campuses to follow strict guidelines. We expect full police checks for all candidates.

Referees

We require three referees, one of which must be the head of the candidate's current or most recent school. We will contact referees to request written references, and unless you expressly request otherwise, we will contact your referees prior to the interview to discuss their recommendation. We may also contact previous employers. We reserve the right to contact the referees by telephone.

Submitting your application

Preferably, your application should be submitted on online recruitment page:

<https://careers-taieuropeanschool.icims.com/jobs/1235/deputy-head-of-british-secondary-and-high-school-section/job>

If this is not possible please send your application by email to chelsea.lee@tes.tp.edu.tw

