

Life in Nanjing

One of China's Four Great Ancient Capitals, present capital of Jiangsu province, pearl of the Qinhuai River in the Yangtse Delta area, Nanjing boasts a rich cultural heritage, sizable expat community and a world-class infrastructure.

Xuanwu Lake- Gazing across Xuanwu lake to the city centre

Getting to Nanjing

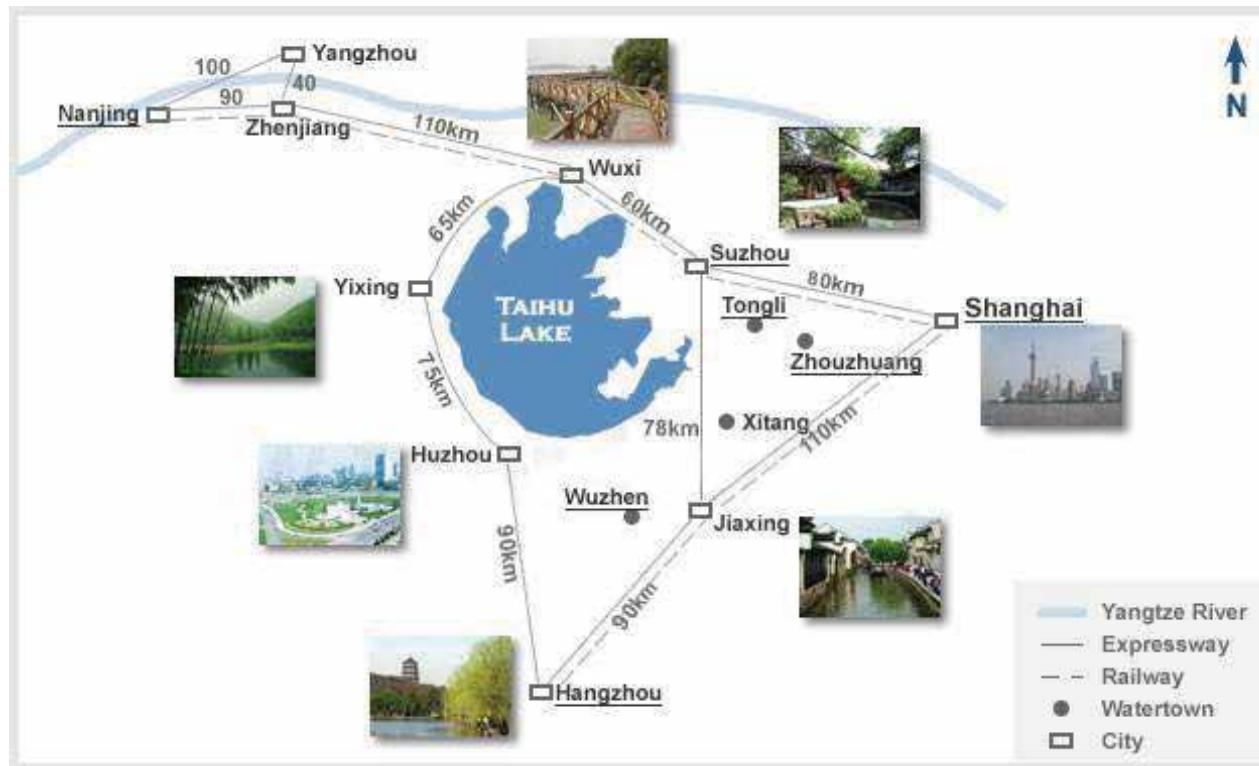


Nanjing Lukou International Airport

Nanjing Lukou International Airport is 35km from the city center and offers flights to most cities in China and a number of Asian destinations including Japan, Korea, Malaysia, Singapore and Thailand.

By Plane

From the city center, taxis cost around 150 RMB (45 minutes); 20 RMB shuttles depart every 20 minutes from the Zhonghuamen Long-Distance Bus Station (near Zhonghuamen metro station); subway line S1 costs 6 RMB and takes around 30 minutes to get into town.



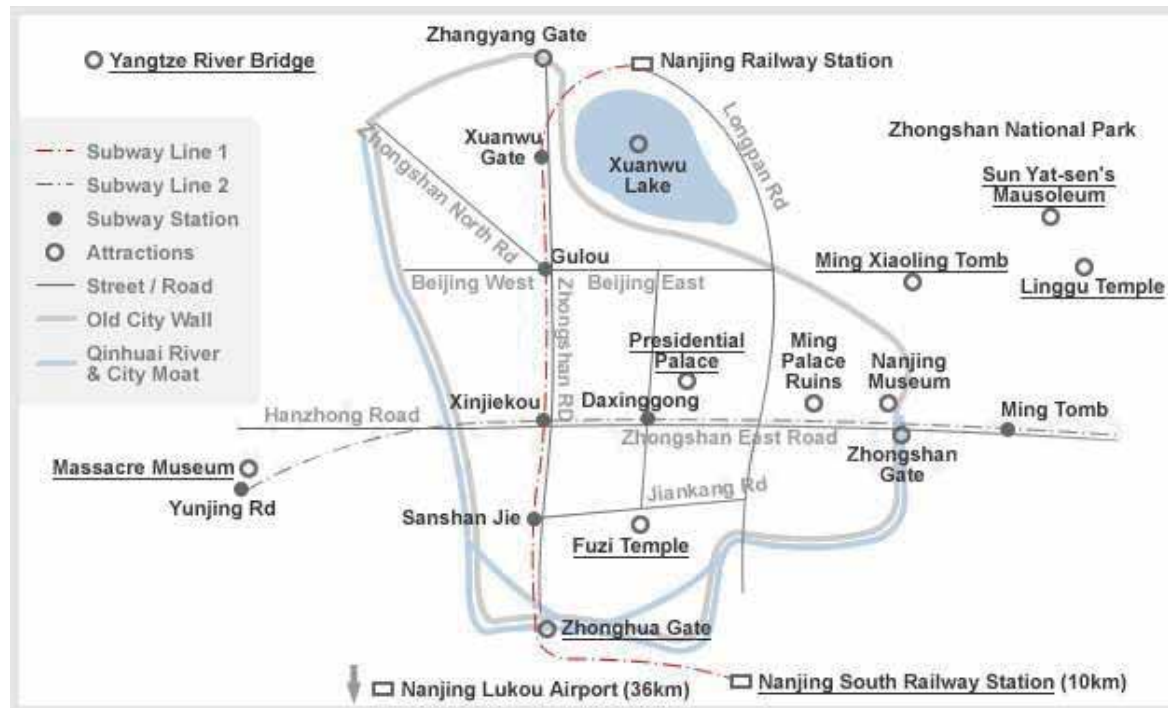
By Train

Nanjing South serves long-haul high-speed trains to Beijing, Shanghai, Xuzhou, Zhengzhou, Zhenjiang, Wuxi, Suzhou, Jinan, Tianjin, Wuhan, and Hefei. There are two 300kph high speed trains that reach Shanghai in 75 minutes, and slower options that take upwards of 4 hours.

By Train- Nanjing Station/ Nanjing South Station

There are two main railway stations: Nanjing Station on the north shore of Xuanwu Lake and Nanjing South (at Zhonghuamen Metro Station). Until 2010, Nanjing Station was the city's main station, but now it only serves some routes to Shanghai, Zhenjiang, Changzhou and Suzhou.

Travelling in Nanjing



People choose to travel by metro lines, buses or taxis in the city, some people prefer cycling as Nanjing is a cycling-friendly city.

By Metro

There are 9 metro lines in service in Nanjing and they are Nanjing Metro Line 1, 2, 3, 4, 10, S1, S3, S8 and S9. Trains run every 6 to 8 minutes and fares are charged by distance, generally between 3-5 RMB. Among them, Line 1, 2, 3, 4 and 10 run within the city, S1 (also named Airport Line) runs in the suburb, S3 (also called Ninghe Line) crosses the Yangtze River on a bridge, S8 (also named Jiangning Line) is an intercity line and S9 (also named Ninggao Line) is the south extension of Line S1. Line 1 runs north-south, line 2 runs east-west well cover most main destination.

Sightseeing



Nanjing is one of few Chinese cities to have truly preserved its cultural heritage. As one of China's Four Great Ancient Capitals, you can still appreciate towering pagodas and Confucian temples dating back to the Song Dynasty (9th-12th centuries). You can also find well-preserved Ming-dynasty gardens and streets rebuilt in the style of the era.





Dr. Sun Yat-Sen's Mausoleum

located at the southern foot of Purple Mountain, this revered tourist destination serves as a tribute to the 'father of China'. There are marble archways, copper gates, and a huge statue of Dr. Sun Yat-Sen.



Presidential Palace

following the establishment of the Republic of China, Dr. Sun Yat-Sen took the oath of Provisional President here. After Japan's defeat in WWII, then Nationalist Government returned to Nanjing, and declared the compound to be the Presidential Palace in 1948. Located near the 1912 entertainment district, architecture and history buffs may find a visit worthwhile.



Nanjing Museum

covering an area of 129,000 square meters, the Nanjing Museum is made up of two buildings packed with historical and revolutionary cultural relics, including porcelain from the palace of the Qing dynasty (221 BC – 206 BC) and relics from the Shang dynasty (16th – 11th century BC).



Xiaoling Mausoleum of Ming Dynasty

Xiaoling Mausoleum of Ming Dynasty (Mingxiaoling) is one of the biggest imperial tombs in China. Emperor Chengzu, Zhu Yuanzhang, the first emperor of the Ming Dynasty (1368-1644) and Queen Ma were buried there. It is renowned for its unique design, its eminent status, its amazing beauty and its magnificent scale.



Confucius Temple (FuziMiao)

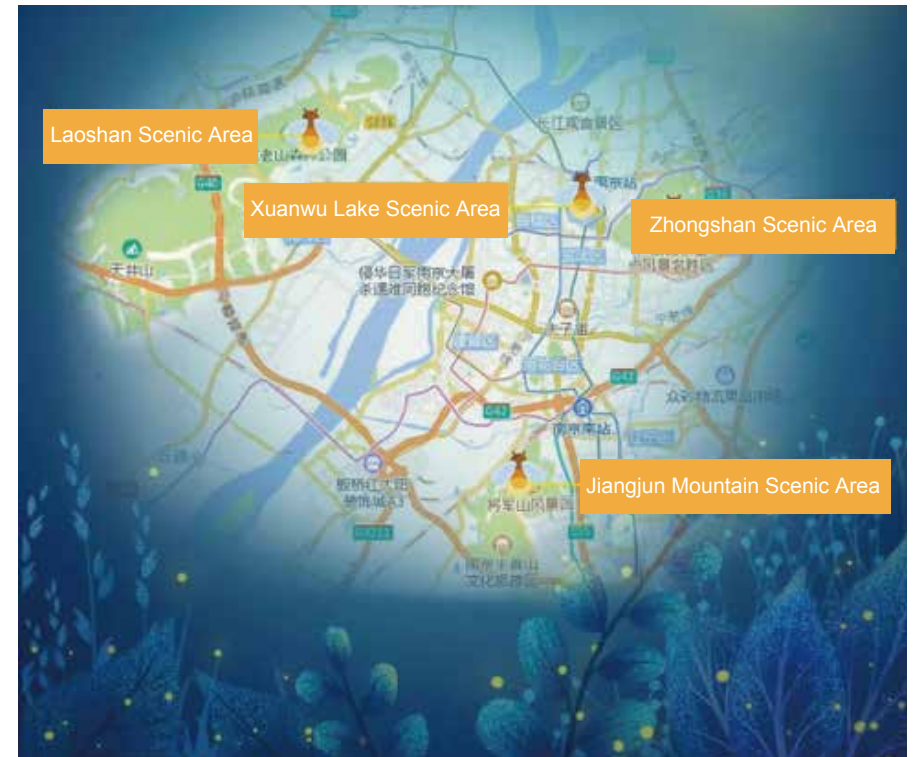
pickpocket central is crowded and dirty but the punters flock here. The temple was built in 1034 to honor the great philosopher Confucius. Around the main buildings is a labyrinthine of market stalls, food vendors, a KFC and a McDonald's. In front of the Nanjing Confucius Temple, the Qin Huai River is flowing.



Nanjing Olympic Sports Centre

located in Nanjing Hexi New City, has served as the main venue for the 2014 Summer Youth Olympics and the 2005 National Games of China. The Olympic Centre includes a multi-use stadium, a 13,000 seat gymnasium, a 4,000 seat FINA standard Aquatic complex, a 4,000 seat Tennis Center and various recreational sports fields.

Fireflies light up the midsummer night sky above the Linggu Temple in Nanjing. Linggu Temple is known as a top place to enjoy the fireflies between July and August.



Best views of fireflies offered in Nanjing Laoshan Scenic Area, Xuanwu Lake Scenic Area, Zhongshan Scenic Area, Jiangjun Mountain Scenic Area



Librarie Avant- Garde Bookstore

China's most beautiful bookshop by CNN in 2015, World's Top 10 most beautiful bookstore by BBC in 2014, World's Top 10 Bookstores listed by National Geographic.



The Porcelain Tower (or Porcelain Pagoda) of Nanjing

one of the Seven Medieval Wonders of the World, is a historical site in Nanjing. It was constructed in the 15th century during the Ming Dynasty, but was mostly destroyed in the 19th century during the Taiping rebellion. The tower is now rebuilt with modern steel and glasses.

Intelligent control of LED and long-range projection is used in the evening to reproduce the dreamlike color-glazed Buddha light.

Buddha's relics were also kept on the site of the underground palace there.

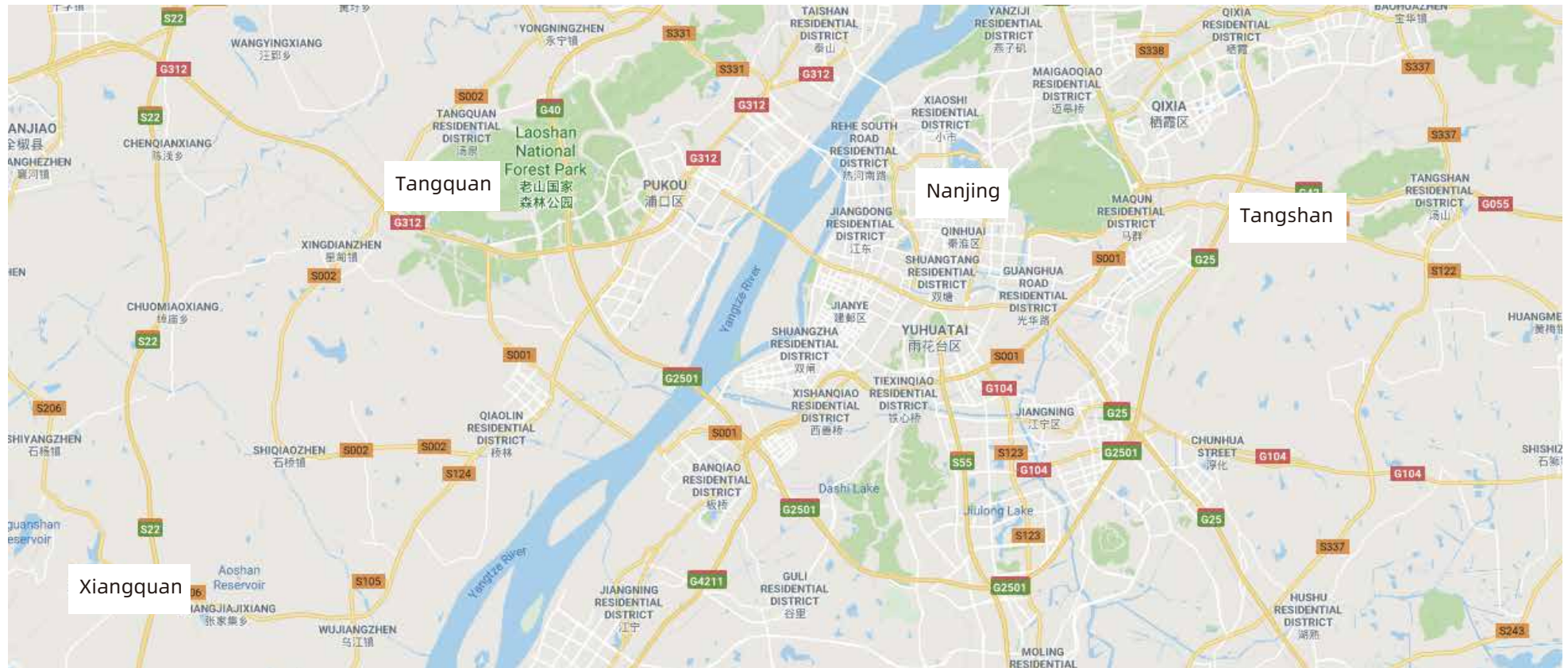
Hot Springs



Nanjing Tangshan Hot Spring Resort

a natural hot spring resort located in scenic areas on the eastern outskirts of Nanjing - Tangshan Town. Fresh air resort with a pleasant climate, peaceful environment is a heaven-sent natural ecological park.

Tangshan Hot Spring has a daily water supply of 5,000 tons and a perennial water temperature of 60-65 ° C, containing more than 30 kinds of minerals and trace elements. It ranks as one of the four major spas in China.



Tangshan Town has a history of more than 1,500 years and named after the hot springs. Before the millennium, Tangshan Hot Springs was used as a royal hot spring in the Xiaoliang period of the Southern Dynasties. and was sealed as a "sacred spring."

It has several sister hot spring resorts. The most near spots are the Tangquan located under Lao Mountain and Xiangquan at He county.

Xiangquan Hot Springs are steamy and full of flavour. Shaoliang Prince of Nanliang Xiao Tong was infected with skin diseases when he was studying in the royal temple nearby, and the hot springs cured him.

Local Cuisine

Nanjing's food has maintained both its unique local food tradition of Huaiyang cuisine and Qinhuai flavored snacks, and has also made rapid developments in food diversity. Sichuan cuisine, Cantonese cuisine, Shandong cuisine, Shanghai cuisine and foreign foods have also entered the Nanjing restaurant market.

Nanjing cuisine is a branch of the Huaiyang cooking school, which is historically called Jing-Su cuisine. The cooks are especially good at the cooking methods of simmering, stewing and fork roasting.



The famous classical dishes of Nanjing are: squirrel fish, egg shaomai, meiren gan, phoenix tail shrimp, Nanjing hand-pulled noodles with beef from Ma Xiangxing Restaurant, and pepper soaked chicken.



Squirrel-shaped Mandarin Fish



Phoenix Tail Shrimps

Dishes made from the local ingredients are very famous. They are often made from the "eight water fresh materials" (fish, lotus root, water celery, lianpeng, jiaobai, arrowhead, water chestnut and jitouguo) and from the "eight land fresh materials" (luhao, jiaoer vegetable, pea leaves, jicai, Chinese wolfberry tender leaves, Chinese small iris, juhuanao and alfalfa).



Lotus Seed



Water Chestnut



Lotus Root with Sweet Source



Salted Duck is Nanjing's signature dish:
typically served boiled, sliced and cold.



Jiaozi (Chinese ravioli):
Nanjing dumplings are wildly popular and served
in carts, shacks and shops all over town.



Duck Blood Soup: locals use every part of the duck,
including congealed chunks of blood served in
a thin broth with coriander



Gan Si (Shredded Bean-curd Sheets) The bean-curd sheets
are cut finely into threads with seasoning of sauce, sesame oil
and vegetables shreds of bamboo root, mushroom, chicken or
meat. It has fine shreds and a tender taste.

Shopping



Shopping in Nanjing is easy and hassle-free. The commercial districts are divided into specialised zones according to what is on sale there.



The Xinjiekou - literally new street corner - Business Centre is a good first stop with all that a modern shopper could reasonably wish for, with mall after mall such as Nanjing Deji Plaza, Jinying International Shopping Center, Nanjing Xinbai, Oriental Business City, and also Walmart.



Hunan Road- a bustle pedestrian street. This decorated East-West street has has hundreds of clothes shops, department stores and restaurants with the famous Shiziqiao Food Street in the middle. It is the second popular shopping street after Xinjiekou.



Confucius Temple Commercial Area- Composed of five markets, Confucius Temple Commercial Area is a whole-sale market covering all kinds of goods from clothes to local specialties.



Chaotiangong Antique Market: originally established in the Ming Dynasty (1368 - 1644) as a school for educating noble children in court etiquette. The buildings house a range of local institutions from an antique market to a Qigong (a Chinese Martial Arts) institute. The market is a meeting place for many Chinese antique collectors some of whom run small businesses at their own stalls.



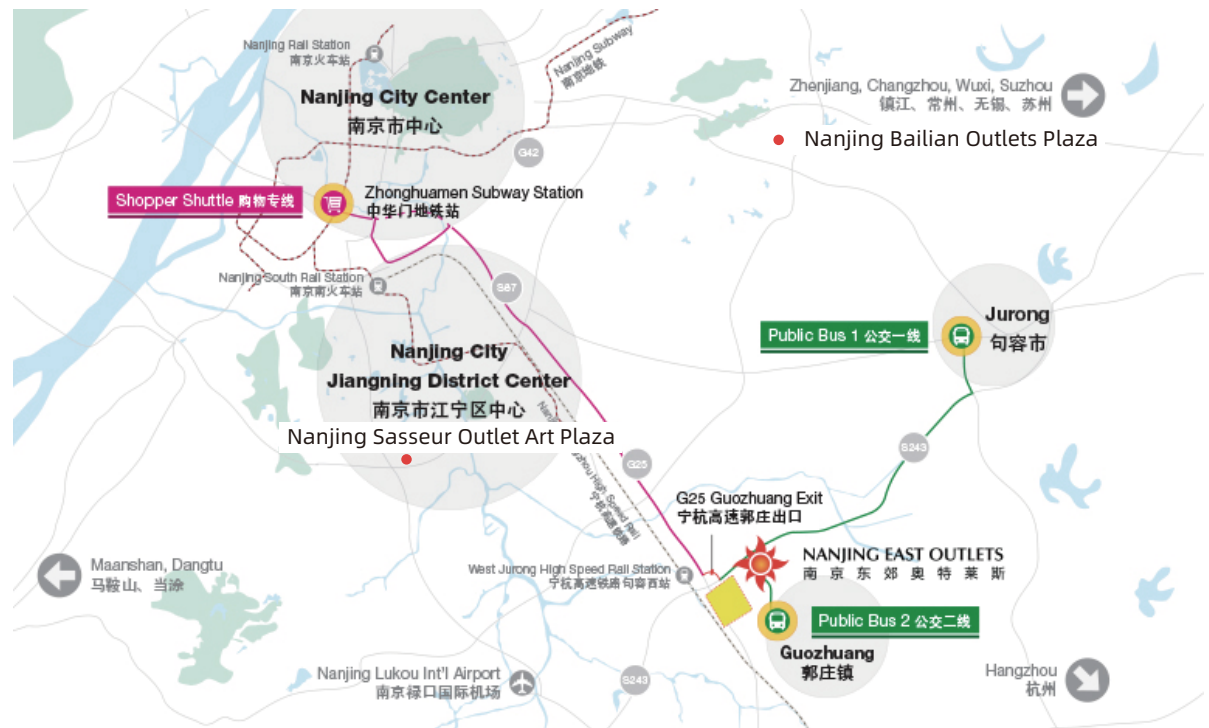
Walmart and Carrefour are quite popular supermarkets in Nanjing, plus RT Mart and Suguo, local supermarket brands.

You can also opt to buy online for electronics and organic food. The fear of buying fakes from local shops is mitigated with JD.com, the Chinese version of Newegg. They sell guaranteed authentic products that are delivered to your door, cash paid on delivery.

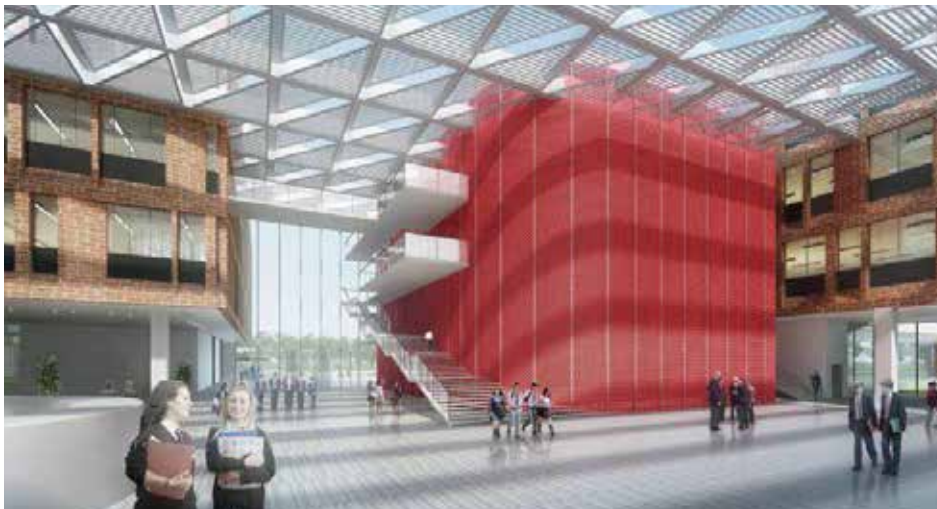


There are three major outlets in Nanjing as marked in the map, including

- Nanjing East Outlets, about 40 mins by shuttle bus from Zhonghuamen Subway Station, with over 100 world-renowned brands offering extraordinary discounts from 35% to 90% off.
- Nanjing Bailian Outlets Plaza, close to Tangshan Hot Spring Resort, where you could visit on your way to or from Tangshan Hot Spring.
- Nanjing Sasseur Outlest Art Plaza, located in Jiangning District, the most convenient one to reach by subway line 3.



Nanjing Thomas School







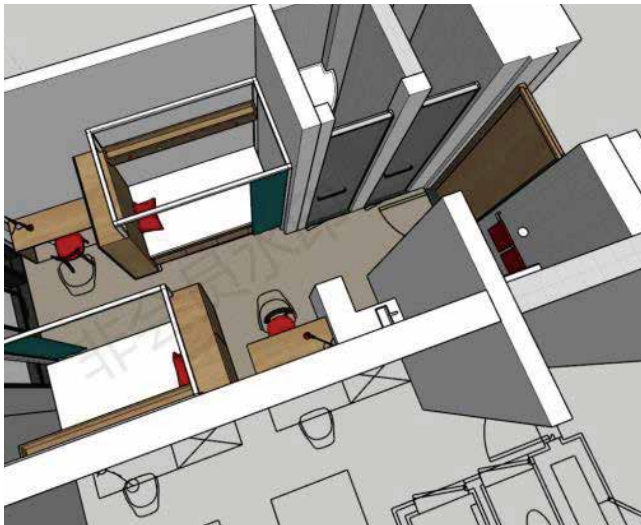






Campus Domitory

Free, fully furnished Western-style apartments are available on campus.



Off Campus Apartment

There are apartments rented for teachers, located off campus. In two years off campus apartments built and managed by school will be ready to move in for faculty and families.





Nanjing Thomas School

Address: Road under planning, Jiangbei New District,
Nanjing, Jiangsu Province, China

Website: www.nanjingthomas.com

Email: apply@thomasschools.com