

2017-18

# THE SIXTH FORM AT DARWEN ALDRIDGE COMMUNITY ACADEMY

Darwen Aldridge  
Community Academy



DARWEN ALDRIDGE  
ENTERPRISE  
STUDIO



DARWEN  
VALE  
An Aldridge Community Academy

Outstanding Things Happen Here

# 100% A LEVEL & BTEC PASS RATE\*

58% A\*-B GRADES  
& EQUIVALENT  
OUTSTANDING  
VALUE ADDED\*

(\*Based on 2016 entry)

"These are magnificent facilities. It feels like you are going to one of the coolest universities."

Wayne Hemingway MBE



“...this wonderful innovative place. The Darwen Aldridge Community Academy is ground-breaking.”

HRH Prince William of Wales

“An excellent range of additional activities gives students opportunities to develop skills and confidence in a wide range of cultural, sporting and entrepreneurial activities.”

Ofsted 2013

“ I am proud of my journey so far, grateful to the Aldridge Foundation, proud of the ethos of DACA and even more proud of the hard working and dedicated teachers who worked tirelessly to set me on my journey towards achieving my degree.”

Khushna Sulaman Butt  
DACA Sixth Form 2011-13  
Graduated in 2016 from the University of Oxford.

# “SOMETHING SPECIAL IS HAPPENING HERE.”

Ofsted Inspector, January 2013

# OUR SHARED MISSION

By the age of 25, all Aldridge graduates will have experienced an outstanding and enjoyable education and be able to sustain the life of their choice. They will be independent, thriving economically and making a real, positive contribution to their communities.

## OUR VALUES

In common with all other providers within the Aldridge Foundation's family, the Sixth Form actively creates learning experiences and environments which enable all students to be:

Capable Independent  
Entrepreneurial Proud  
Praised Respectful  
Healthy Safe and happy  
Well-advised Responsible  
Well-equipped

"The Sixth  
Form is Good."

Ofsted 2013



Darwen Aldridge  
Community Academy



DARWEN  
VALE  
An Aldridge Community Academy

# CONTENTS

MEET THE PRINCIPAL 06	WELCOME FROM THE SIXTH FORM STUDENTS' BOARD 07		GREAT REASONS WHY YOU SHOULD JOIN IN 2017 08		WHAT MAKES US A CLASS ACT? 09	SIX STEPS TO APPLYING 10
	ENTRY REQUIREMENTS 11		PERSONALISED STUDY PROGRAMMES 12	WHERE DO OUR SIXTH FORMERS JOIN US FROM? 13	RESULTS 2015 15	
HOW WE SUPPORT YOU 16	STUDENT SERVICES 17	AIM HIGHER 18		ENRICHMENT 19		SPORTS ACADEMIES 20
DARWEN CREATES 22		WHERE ARE THEY NOW? 23	THE CLASS OF 2016 24	SUBJECT DIRECTORY 27		THE ALDRIDGE FAMILY 55



# MEET THE PRINCIPAL

I am delighted that you have shown an interest in our Sixth Form and I hope this prospectus will help you to understand the many opportunities available to you at Darwen Aldridge Community Academy.

Our 2016 results – 100% pass rate for A levels and BTECs with 58% A\*-B and equivalent grades, based on entry – speak for themselves and cement our reputation for academic excellence. The Department for Education's 2016 Performance Tables show that our A Level and BTEC students make the most progress compared with every other post-16 provider in Blackburn with Darwen. These also show that we are one of the top performing Sixth Forms in Lancashire. Taken together, these results mean that you can be confident of doing well if you choose to complete your Post 16 courses with us.

Our excellent results and outstanding pastoral care have helped a large number of students from schools and academies in Darwen, Blackburn, Hyndburn, Bolton, Burnley,

Chorley, Preston and further afield progress onto their first choice university or employment path. With our inspirational, dedicated and specialist teachers and firm belief that all students can succeed, you can be sure that by joining us your future will be a bright one. We are also committed to continually improving our reputation as a provider of high quality teaching and learning.

I am proud to be the Principal of an ambitious Academy that has high aspirations for all students. We offer a secure stepping-stone into employment or Higher Education; an important stage in the development of all young people. At Darwen Aldridge Community Academy, you will also make many new friends, benefit from friendly and specialist subject teachers, experience the process of maturing in a high performing Sixth Form community and develop into the rounded-person required by universities and high quality employers.

For more information, please look at our website or contact our Sixth Form team. If you are able to, please come along to our Open Events where you can talk to staff and students about how we can help you to achieve excellence.



**Brendan Loughran**  
Principal





# WELCOME FROM THE SIXTH FORM STUDENTS' BOARD

We are very pleased to welcome you to the Sixth Form. Like us you will find the Sixth Form very different from high school. There will be lots of new students to meet, a vibrant stimulating environment, genuine sense of community, friendly and caring teachers, new courses and excellent facilities. The Sixth Form staff and other students will help you to settle in quickly and make the adjustment to the higher level of work. Just like us when we started Year 12, you too will soon feel very much at home here.

All Sixth Formers are encouraged to share their opinions about their education and the other things which matter to them.

The Sixth Form Students' Board ensures your voice will be heard, and plays an important part in shaping the Sixth Form for you - the people who really matter!

The Sixth Form is a really friendly place to study and make new friends. Lessons are excellent and teachers work hard to make sure you get good results. There are also lots of activities to get involved in which help you to gain extra qualifications and develop new skills to make you more attractive to universities and employers, so make sure you get involved.

We are really enjoying ourselves and are sure you will too.

**"I liked the friendly and welcoming attitude at DACA. I came to the Sixth Form not really knowing anyone and have made some great friends. I loved my courses and enjoyed doing the work. The teachers were easy to get along with and were always very supportive."**

**Liam Taylor**  
Former student of St Bede's High School  
and now studying Ecology  
at Lancaster University

# GREAT REASONS WHY YOU SHOULD JOIN US IN 2017

## Outstanding Results

Our 2016 results based on entry - **100% A Level and BTEC pass rate with 58% A\*-B grades and equivalent** - ensure we are one of the highest performing state-funded Sixth Forms in the North West.

## Ofsted

Graded as Good by Ofsted in January 2013 and aiming to become Outstanding in our next inspection.

## Value Added

The Department for Education's 2016 Performance Tables show that our A Level and BTEC students make the

most progress compared with every other post-16 provider in Blackburn with Darwen. These also show that we are one of the one of the top performing Sixth Forms in Lancashire. This means our students significantly exceed the A Level and BTEC grades predicted by their GCSE results.

## Personalised

You will receive the highest quality teaching, care and guidance. We regard every student as special, unique and talented and our experienced, friendly and caring staff take the time to get to know the real you. We always go 'the extra mile' to help you fulfil your potential.

## Do It Your Way

You can choose from 40+ A Levels and Level 3 BTECs, including some not offered elsewhere locally. You can also combine A Levels and BTECs to suit your personal strengths. In addition, we provide a three year programme for students who still wish to go to university, secure a higher apprenticeship or enter high quality employment but who gain less than five Cs or 5s at GCSE.

## Enrichment

You can choose from 40+ complementary activities to take part in to boost your CV and university or employment application. Combined with our unique specialism of entrepreneurship, this will help you to develop skills and qualities looked for by universities and employers:

- TEAMWORK
- PASSION
- RISK TAKING
- CREATIVITY
- PROBLEM SOLVING
- DETERMINATION

## Support

We have plenty of people on hand to help you in any situation, including the Sixth Form Pastoral Manager, Sixth Form Progress Tutors, Student Services and a professional Counsellor. We also provide financial support to help with the costs of Post 16 education. Please contact us for an informal and confidential discussion.

## Learning

Outstanding teaching and learning is at the heart of the Academy's Sixth Form experience. You will find your lessons are interesting, innovative and individualised. We place a lot of emphasis on enabling you to become an independent learner

with the study skills, know-how and confidence to think for yourself and to manage your own learning programme. Your friendly, caring, experienced and specialist teachers will take the time to work with you on a one-to-one basis to help you achieve this. When the time comes, we want you to be well prepared for higher education or your first proper job and be well on the way to becoming a life-long learner.

## Community

Working closely with partner high schools, such as Darwen Vale High School, helps students to successfully manage the transition to Post 16 study and generates a strong sense of community in the Academy's Sixth Form. Students make new friends quickly and there is a lively sociable feel to life. In a survey at the end of the academic year students were overwhelmingly positive about their experience at the Academy's Sixth Form. Students feel strongly that they are part of a caring and committed community and that this is a key factor in helping them to flourish.

## Transport

Situated in the heart of Darwen with excellent transport links, we are very convenient for students at schools, academies and colleges throughout Darwen, Blackburn and all surrounding areas. Subject to personal circumstances we can also assist with bus and train passes.

## Progression

You will receive outstanding help when applying for university, further training or employment. More than 70% of Leavers progress on to university each year, including Oxbridge and the Russell Group.



# WHAT MAKES US A CLASS ACT?

As well as outstanding results, value added, teaching, pastoral care, state-of-the-art facilities and a wide range of subjects, it's the intangible things that make our Sixth Formers so successful. You can call it a philosophy, a culture or a vision, but to us it's just the way we do things.

## Care, Empathy and Compassion

We're interested in you. We want to know about your life, background, how you feel about things, what you need and where you'd like to go. For us, every student is special, unique and talented and we treat you as an individual, with care, empathy and compassion. You deserve nothing less!



## Achievement, Success and Excellence

We have a tireless dedication to improving the standards of academic achievement for our students and a passionate commitment to your success through a culture of high expectations and aspiration.

## Learning, Creativity and Innovation

We are committed to achieving an outstanding learning environment with the highest possible quality of teaching and support from all members of staff, all day and every day without fail.

## Relationships, Collaboration and Teamwork

We all do better when we work together. As well as staff and you working together to foster a real sense of partnership and mutual respect, we work closely with your parents and carers to ensure you become a confident, mature and responsible member of society. We also work closely with universities and employers to enhance your future prospects.

## Inclusivity, Belonging and Respect

We embrace diversity and are strongly committed to equality of opportunity, regardless of gender, race, culture, sexual orientation or religious belief for all students, staff and the wider community.

## Honesty, Openness and Fairness

Honesty and fairness are at the heart of Sixth Form life. We are committed to acting with openness, trust and respect for the individual in everything we do.

## Positivity, Enthusiasm and Fun

Unless something is fun it's not worth doing. That's why, above all, we strive to create a happy and stimulating environment where learning is as enjoyable as it is rewarding. We want you to have a positive experience in every respect, develop a thirst for learning and a boundless enthusiasm for taking on and overcoming all the challenges of Post 16 study and afterwards.



# SIX STEPS TO APPLYING

1

## Do Your Research

Download the Sixth Form prospectus from our website, call in to reception or get a copy from your school and read it. You can also find out more details at [www.daca.uk.com](http://www.daca.uk.com)

2

## Visit Us

Come along to our Open Evening from **5.00pm - 8.00pm on Thursday 27th October** or one of our Saturday information mornings. Speak to staff and current Sixth Form students about the courses you want to study as well as all of the other opportunities we have for you.

3

## Apply

The best way is to apply online at [www.daca.uk.com](http://www.daca.uk.com). Simply complete the short application form and then leave the rest to us. We will be in contact with you as quickly as possible. The deadline for applications is **Friday 31st March**, but it's best to get it done well in advance of this. You can submit your application from early September.

4

## Progression Meeting

We have a friendly progression meeting and not a scary interview. We arrange this for no later than two weeks after we receive your application. As well as telling us why you want to study the courses you've chosen, this is your chance to ask us the questions which matter to you. Before you leave, you will receive an offer stating the GCSE grades you will need to achieve to be able to start your preferred study programme.

5

## Enrol

When you get your GCSE results on **Thursday 24th August** come to the Sixth Form Centre and speak with one of the Sixth Form team to complete your enrolment. **Enrolment will take place from 24th August to 5th September.**

6

## Start Your Courses

The time has come for you to get stuck into your new courses and make a good start. Try not to be too nervous, everyone is very friendly and before you know it you'll feel completely at home.

## Admissions

The Sixth Form provides for up to 220 students in Year 12 and 180 students in Year 13.

Admission is open to students from Year 11 at DACA and other schools and colleges. Assuming places are available, the Department for Education's current Post 16 funding structure permits the Academy to admit students into the Sixth Form provided they have not reached their nineteenth birthday and they meet published entry requirements.

The offer of a place in the Sixth Form is dependent on the student securing the appropriate GCSE grades (or equivalent) to meet the entry requirements for each of their preferred subjects.

## Leaving Age

Since 2015, all young people have been required to **stay** on in **education** or training, **until** they are at least **18** years old.



# ENTRY REQUIREMENTS

**4-5 A Levels** - five A/A\*s or 7-9s, including English Language and Maths

**3 A Levels** - five Bs or 6s, including English Language and Maths

**Level 3 BTECs** - at least five Cs or 5s, including English Language and Maths

**3 Year Pathway** - at least five Ds or 4s, including English Language and Maths

## What's the difference between A Levels and BTECs?

Most A Levels are assessed only through exams, while all BTECs are assessed through a combination of exams, coursework and practical assessments.



## Should I choose A Levels over BTECs?

This all depends upon your GCSE grades. BTECs need at least five Cs or 5s, including English Language and Maths, while A Levels need at least five Bs or 6s, including English Language and Maths. See the entry requirements on each subject page for the specific requirements.

## Do universities prefer A Levels to BTECs?

Contrary to popular belief, apart from a very small number of specific degree courses where A levels are preferred but by no means essential, the vast majority of universities, including those belonging to the Russell Group, accept A Levels or BTECs or a combination of both. High grades matter far more to universities than the type of course you've followed.

## Can I take A Levels and BTECs together?

We always aim to personalise your study programme. If combining A Levels and BTECs enables you to play to your strengths and you have the necessary GCSEs, then we will do our best to make it happen.

## How many subjects can I choose?

You have to study at least three (or equivalent) subjects and if you have high GCSE grades you can take four or five subjects.

## Can I still do AS exams?

We believe strongly in the value of AS. Wherever it is in students' best interests to do so, we will offer A Level subjects from exam boards which enable you to take AS exams.

# PERSONALISED STUDY PROGRAMMES

Everyone is different and has different needs and career ambitions. Wherever possible we will personalise your study programme to enable you to achieve your goals. As a result, all of our A Level and BTEC students follow at least three subjects (or equivalent) across a wide variety of study programmes.

Some examples of different student programmes being taken by current students are shown below:

**BTEC Extended Certificate = 1 subject**

**BTEC Foundation Diploma = 1.5 subjects**

**BTEC Diploma = 2 subjects**

## A Level:

- Three, four or five A Levels
- At least one A Level + BTEC Diploma
- Two A Levels + BTEC Foundation Diploma
- One A Level + at least two BTEC Extended Certificates
- Two A Levels + at least one BTEC Extended Certificate
- One A Level + BTEC Foundation Diploma + BTEC Extended Certificate

## BTEC:

- Two BTEC Diplomas
- BTEC Diploma + BTEC Foundation Diploma
- BTEC Diploma + BTEC Foundation Diploma + BTEC Extended Certificate
- BTEC Diploma + two BTEC Extended Certificates
- BTEC Foundation Diploma + at least two BTEC Extended Certificates
- Three or four BTEC Extended Certificates



# WHERE DO OUR SIXTH FORMERS JOIN US FROM?

In addition to our own Year 11 students who progress into the Sixth Form, as our reputation spreads then so too does the range of schools and colleges our Sixth Formers choose to join us from, and includes:

- Darwen Vale High School
- Queen Elizabeth's Grammar School, Blackburn
- St Wilfrid's C of E Academy, Blackburn
- St Bede's RC High School, Blackburn
- Witton Park Academy, Blackburn
- Pleckgate High School, Blackburn
- Blackburn Central High School
- Canon Slade High School, Bolton
- Runshaw College, Leyland
- Cardinal Newman College, Preston
- Blackburn College
- St Mary's College, Blackburn
- Bolton Sixth Form College
- Rivington and Blackrod High School, Rivington
- Parklands High School, Chorley
- Our Lady and St John Catholic Arts College, Blackburn
- Our Lady's Catholic High School, Preston
- Tauheedul Islamic Girls' High School, Blackburn
- Al Islah Islamic School, Blackburn
- Holy Cross RC High School, Chorley
- Myerscough College, Preston
- Albany Academy, Chorley
- Corpus Christi High School, Preston
- Southlands High School, Chorley
- Turton High School, Bolton
- Norden High School, Rishton



# ACHIEVE WITH US

100%

## PASS RATE IN ALL A LEVEL & BTEC SUBJECTS\*

(\*Based on entry)



# RESULTS 2016\*

(\*Based on entry)

The Class of 2016 achieved outstanding results:

A\*-A GRADES OR  
EQUIVALENT – THE  
GRADES NEEDED  
BY THE **TOP 10 UK  
UNIVERSITIES**

**47%**

A\*-B GRADES OR  
EQUIVALENT - THE  
GRADES NEEDED  
FOR **RUSSELL GROUP  
UNIVERSITIES**

**58%**

A\*-C GRADES OR  
EQUIVALENT - THE  
GRADES NEEDED  
FOR **A GOOD  
UNIVERSITY**

**81%**

PASS RATE ON  
**A LEVEL AND  
BTEC COURSES**

**100%**

**HIGHEST**  
EVER NUMBER OF  
STUDENTS GAINING  
PLACES AT THEIR  
**FIRST CHOICE  
UNIVERSITY**

**HIGHEST**  
EVER NUMBER OF  
STUDENTS WHO  
ARE **THE FIRST  
GENERATION OF  
THEIR FAMILY TO GO  
TO UNIVERSITY**

**HIGHEST** VALUE-ADDED

## Value-Added 2016

Just as important as pass rates are the value added measures that the Government produces each year. These look at the progress students make between the end of KS4 and the end of KS5. It represents the real measure of success because it shows how much progress students have made during their time with us. We consistently achieve excellent value added scores proving that whatever your GCSE results, you'll make outstanding progress in the Sixth Form.

The Department for Education's 2016 Performance Tables show that our A Level and BTEC students make the most progress compared with every other post-16 provider in Blackburn with Darwen. These also show that we are one of the top performing Sixth Forms in Lancashire.



# HOW WE SUPPORT YOU

**In the Sixth Form we strongly believe that every student matters and we provide outstanding support both in and outside the classroom.**

## Health and Welfare

In the Sixth Form every student really does matter - we believe every student is unique, talented, capable and deserving of respect. We are fully committed to promoting the health and welfare of all our students and take our legal duty of care seriously. We will take any and all reasonable actions to ensure the safety and wellbeing of students.

We also recognise the damage that can be caused by bullying in all its forms. We have a zero tolerance policy towards any behaviour that causes anxiety or distress to others. In addition, we have a strict no smoking or vaping policy in all areas of the campus.

If you or your parents or guardian have concerns about another student, you or they should raise them immediately with any member of staff. All staff receive regular safeguarding training and you can be assured they will respond quickly and professionally to any concerns you raise with them.

## Your Progress Tutor

When you come to the Sixth Form you will have your own Progress Tutor and they have a similar role to your form teacher at high school. Through individual target setting and action planning, your Progress Tutor helps you reach your full academic and personal potential.

They will have regular meetings with you to support you in all aspects of Sixth Form life: advising you on study skills and how to get the highest grades through regular reviews of your academic progress; providing

personal advice and support; helping with career progression and your application for university or employment; arranging and monitoring any extra learning support you may need.

## Learning Support

We have a dedicated and specialist Learning Support team to help all Sixth Form students achieve their personal and academic goals. The team has wide experience in supporting students with the full range of special educational needs, disabilities and other health needs.

They will continue to provide the support you may have received at high school, as well as support you if you experience difficulties while in the Sixth Form. This includes liaising with the Examinations Office to ensure all appropriate individual access arrangements are in place for examinations, such as additional

time, use of word processors and readers and scribes.

For further information, or to arrange an appointment to find out more about how we can meet any additional needs you may have, please contact Claire Phillips, Sixth Form Pastoral Manager, on **01254 819500** or **claire.phillips@daca.uk.com**

## Counselling Service

Every Sixth Form student has access to a confidential counselling service with our two full-time in-house professional counsellors. This helps ensure that you enjoy your time in the Sixth Form and achieve personal and academic success.

## Careers Guidance

As well as access to New Directions, Blackburn with Darwen's independent careers, education and training information service, we have



specialist advisers in the Sixth Form who are always available to provide you with informed and impartial advice to help you make the right choices for your future and develop a personal career plan. Our in-house advisers will provide you with detailed information on a wide range of careers, apprenticeships, degree courses and gap year opportunities.

# STUDENT SERVICES

## 16-19 Bursary Fund

The Academy's 16-19 Bursary Fund is designed to help students who face the greatest financial hardship. The support is funded by the Government and administered by the Academy. Students can apply for bursary funding at any time throughout the year and more than once if circumstances change.

A bursary is money that you use to pay for education-related costs such as clothing, books, equipment, visits, daily transport and lunch. The 16-19 Bursary Fund has two elements: the Guaranteed Bursary and the Discretionary Bursary.

## Guaranteed Bursary

This guarantees a bursary of £1200 per year. You qualify for this bursary if you meet one or more of the following criteria:

- You're in or have recently left local authority care
- You get Income Support (or Universal Credit in place of Income Support) in your name
- You're disabled and get both Employment and Support Allowance (ESA) (or Universal Credit in place of ESA), and either Disability Living

Allowance (DLA) or Personal Independence Payment (PIP) in your name.

## Discretionary Bursary

This is a means-tested bursary for students who face financial hardship and who do not qualify for the Guaranteed Bursary. Priority will be given to:

- Students eligible for free meals (see below for more information)
- Students whose families receive child/working tax credit and/or an annual gross household income less than £24,000.

## Free Meals

You will be eligible for these if you received them at high school or if your parents or guardian are serving members of HM Armed Forces or receive one of the following benefits:

- Income Support
- Income-based Jobseeker's Allowance
- Income-related Employment Support Allowance (ESA)
- State Pension Credit (guarantee element)
- Universal Credit
- HRMC Tax Credit Award Letter showing 2015/16 income

- Child Tax Credit (provided they are not entitled to Working Tax Credit) and have an annual gross income of no more than £16,190
- A bank statement showing a benefit payment going in to your parent/guardian's bank account within the last three months
- Working Tax Credit run-on - paid for 4 weeks after your parents/guardian stop qualifying for Working Tax Credit
- Part VI of the Immigration and Asylum Act 1999
- A letter from your Local Authority, local carers' organisation or GP if you are a young carer and you do not fall into one of the above groups.

## Transport

Getting to and from the Sixth Form couldn't be easier. Being located in the town centre means we have excellent road and rail links. The rail and bus stations are less than a five-minute walk and we also have dedicated storage for those who wish to cycle. You may be eligible for a bus or train pass, which can also be used in evenings and at weekends. Please discuss this with us.

## Working With Parents

We absolutely believe that students will achieve more when we all work together: student, parent/carer and teachers. In the Sixth Form, students need some independence and responsibility for their own learning in order to prepare them for their next steps onto university or employment. We provide this freedom in a very supportive context with close monitoring and guidance.

We endeavour to keep parents/carers informed and up to date about their son/daughter's progress in the Sixth Form. We do this through a variety of methods including Student Progress Evenings to discuss academic progress with subject teachers and Progress Tutors and regular progress and attendance reports.





# AIM HIGHER

We encourage all Sixth Formers to stretch and challenge themselves academically. We provide a range of extra qualifications and experiences to allow you to further yourself in preparation for university and/or employment. For instance:

## East Lancashire Scholars



A partnership between Lancaster University and the Villiers Park Educational Trust to help academically able students from disadvantaged backgrounds to aspire to qualify to join a leading university.

## Career Ready



An educational charity linking employers with schools and colleges to open up the world of work to young people and provide them with the real-life skills and knowledge they need for work. It involves a structured programme of masterclasses, workplace visits and mentoring, including a four - six week paid internship. Previously students have completed internships at high profile firms such as ITV-Granada, Bank of New York

and BT and gained a real head start towards developing a professional career.

## Future Oxbridge Scholar's Programme

A full programme to assist academically-talented students interested in applying to Oxford or Cambridge Universities.

This provides a range of stretch and challenge activities to assist students in developing the intellectual, practical and personal skills and knowledge they will need to be accepted at an Oxbridge college.

This includes a personalised independent research plan and reading list, regular Oxbridge style tutorials and interview practice with a subject-specialist, attending master classes and public lectures at local Russell Group universities, participation in essay writing competitions and an annual residential visit to St Peter's College, Cambridge or Queen's College, Oxford.

## Session 3

Students looking to improve upon their current performance and grades can attend weekly additional classes from 3.30pm - 5.00pm to help consolidate their understanding of subjects and extend their knowledge of specific topics.

## A\* Master Classes

Students showing the potential to achieve the highest grades receive specialist A\* support lessons.

## Extended Project Qualification

A free standing qualification highly valued by universities. It is worth up to 70 UCAS points and is equivalent to half an A Level. The EPQ provides you with the opportunity to develop an individual research paper with one-to-one support from a member of staff. You can explore an aspect of a subject you are studying, choose a topic in which you have a personal interest or do a project about an issue that concerns you. Previously students have covered

a wide range of topics and issues from engineering, science, mathematics, computing, psychology, sociology, history, business, economics, law and others.

## Future Teacher's Programme

If you are aiming for a career in Primary or Secondary teaching, we offer the Future Teacher's Programme. You learn the same material about lesson planning, classroom management and educational theory as graduates on our School Direct teacher training programme accredited by the University of Cumbria - one of the largest teacher-training establishments in the UK with an unrivalled reputation for excellence. You then specialise in the subject area of your choice, initially acting as a classroom assistant and progressively building your skills and confidence in designing and delivering learning activities before teaching a whole class under the supervision of an experienced teacher.

Successfully completing this programme will put you at a significant advantage when applying for education/teaching courses at university.

## Future Healthcare Professional Programme

If you have a strong and realistic commitment to studying Medicine, Dentistry, Veterinary Science, Ophthalmology, Pharmacy, Nursing, Midwifery, Radiology or Physiotherapy then the Future Healthcare Professional Programme will support you in gaining a place at university. As well as practical activities, speakers, discussions and student presentations, you will receive guidance on writing your UCAS personal statement, information regarding the UKCAT/BMAT exams and preparation for possible questions at interviews.

# ENRICHMENT

There's more to life in the Sixth Form than just gaining your qualifications. We want you to achieve your potential and flourish in and outside the classroom. Whether you're thinking of going straight to university or full-time employment after the Sixth Form, we recognise the importance of making yourself stand out from the crowd. That's why we have a wide range of exciting enrichment activities for you to take part in and uncover hidden talents and develop new skills.

You can take part in a huge selection of activities, including:

- AfriDACA - visit an African country to deliver sports workshops and literacy and numeracy skills to street children
- Sports Academies with weekly inter-college fixtures: boys' football, girls' futsal and netball
- Ski and snowboarding visit
- Sports tours (e.g. Panathinaikos FC, Paris netball tournament etc)
- Future Healthcare Professional Programme
- Career Ready
- Leadership Academy
- Music and dramatic productions: lead, chorus line, director, scenery construction, make-up
- Future Teacher's Programme
- Work experience placements
- Volunteering
- Creative and Performing Arts Academy
- Future Oxbridge Scholar's Programme
- Duke of Edinburgh Award - Bronze, Silver and Gold
- Start up your own business (Darwen Creates)
- Sport Leader and Sports Ambassador
- Choir
- Student bands
- Extended Project Qualification
- National competitions
- Wednesday afternoon recreational sports (e.g. football, fitness suite, horse riding etc)
- UK and foreign visits (e.g. London, Amsterdam, New York, Paris, Germany, Poland, Uganda, Kenya, Barcelona, Italy)
- Sixth Form Students' Board
- Charity fundraising



# SPORTS ACADEMIES



Our sports academies for Boys' Football, Girls' Futsal and Netball give you the opportunity to combine your academic studies with playing competitively and at a high level. You will be able to improve your playing skills, play against some of the best college and academy teams regionally and nationally as well as apply for scholarship opportunities in America.

We are looking for young men and women who want to maximise both their academic and sporting potential. If you have previously played at town or county level or for a Centre of Excellence, our sports academies provide a first class opportunity for you to continue your development as an individual and a team player.

Our facilities are recognised as some of the best in the region at this level and include a full size floodlit 3G pitch, two FA standard pitches, state of the art sports centre, well-equipped fitness suite and multi-user games area.

As well as weekly competitive fixtures, all sports academy students receive around five hours of high quality specialist coaching each week from professional coaches. This covers skills training, technical and tactical understanding and fitness training. Player fitness is regularly monitored through individual training plans including a focus on diet and nutrition.

Trials for all sports academies take place from December 2016. Please check our website for updates.

## Boys' Football Academy

Coached by Chris Worthington, the boys' football academy is very successful. Since 2013 they have been the North West Colleges' Division 1 champions, won the Lancashire U18s Cup and reached the final stages of the National Colleges' Cup competition. The Academy has established a strong partnership with several local teams. Academy students have progressed to playing for Chorley FC and other semi-professional sides in the North West and Australia.

Players also undertake pre-season training and this has previously taken place at Malaga FC and Panathinaikos FC. Plans are already underway for 2017's pre-season training camp. You will also have the opportunity to develop your coaching and refereeing skills by completing the relevant FA courses.

**"The Football Academy is excellent. The excellent coaching and facilities as well as weekly league and cup fixtures against other Sixth Forms and colleges have helped all players improve their individual skills and team play."**

**Brandon Alexander**  
Former student of Albany Academy,  
Chorley and now studying Business  
Management at Edge Hill University



## Girls' Futsal Academy



Coached by Blackburn Rovers Ladies FC Head Coach, Gemma Donnelly, the girls have a strong partnership with Blackburn Rovers LFC. We look for girls

who are passionate about playing football and who are keen to expand their experience and skills: if you progress you can trial and play for one of the high standard local ladies' teams.

The team competes in the National Colleges and Academies Futsal League and also plays in regular competitions at the Leeds Futsal Arena. Moreover you will have the opportunity to develop your coaching and refereeing skills by completing the relevant FA courses.



## Netball Academy



Coached by Emma Dovey (GB International and Manchester Thunder) we are looking for talented players who are already playing at a good standard with the potential and enthusiasm to become part of a successful team. You will work to improve your fitness, technical skills and understanding of the game. You will receive professional coaching in our impressive facilities, which include a fully sprung indoor sports hall, spacious outdoor courts and a state of the art fitness suite.

The team competes in the highly competitive North West Colleges' League and British Colleges' Cup. Our close links with Manchester Thunder ensure that if you have the potential to play at the highest level you will receive the necessary coaching and development. In 2015 the team entered the Paris Netball Tournament in France; they played teams from different European countries and performed very well.



# DARWEN CREATES

Do you want to  
earn money whilst  
you study in the  
Sixth Form?

Do you have a talent  
for graphic design?  
A passion for fashion?  
Or a motivation  
to be your own  
boss and earn your  
own money?



At Darwen Creates, we can help you develop your idea, test it and turn it into a business. With our unique offices in the Academy you can fit your business around your lessons, accessing support and meeting with clients when it suits you. We can link you up with a mentor, our network of local businesses and help you access the money you need to get started.

Apply for our start-up course and you will be taken through every step of the start-up journey from helping you generate your idea, financing your business,

marketing and customer service. These sessions are perfect for those serious about starting a successful business.

Find out how you can make money doing work you love. Visit the bridge to meet our young entrepreneurs for advice and inspiration.

**John Quinn**  
Owner of Mensentials -  
an online male grooming  
products retailer

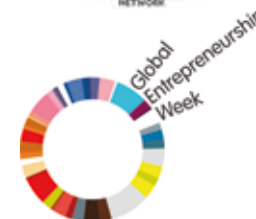


"For as long as I can remember, I've enjoyed challenges and am not afraid to take risks. I really enjoyed setting up a small chocolate making business in my high school years so when I found out about Darwen Creates I jumped at the opportunity to set up a business selling male grooming products online.

The support from Darwen Creates staff and mentors from local businesses was excellent and helped me a lot with finding funding, marketing and trouble-shooting. It was hard work doing it alongside my A Levels but I've ended up with excellent grades and a successful business, so I'm very happy with everything.

I would urge anyone thinking about starting their own business to give it a go and get involved with Darwen Creates.."

Darwen Creates is also a proud supporter of Global Entrepreneurship Week and works in close partnership with Hive – the business leaders' network for Blackburn with Darwen.



**55%**  
of young people now have  
an ambition to start their  
own business. Are you one  
of them? As students in  
the Sixth Form you're in  
the perfect place to create  
your own success.

What kind  
of life do you  
dream of creating  
for yourself?

# WHERE ARE THEY NOW?



## Khushna Sulaman Butt

**DACA Sixth Form 2011-13:**

Art, Photography, English Literature and Language and Textiles.

### University

Graduated in 2016 with a Bachelor of Fine Art degree (2:1) from the University of Oxford. At the end of her second year she spent the summer as an intern at the Michael Werner Gallery in New York City.

"I'm proud of my journey so far, grateful to the Aldridge Foundation, proud of the ethos of DACA and even more proud of the hard working and dedicated teachers who worked tirelessly to set me on

my journey towards achieving my degree."



## Keri Speirs

**DACA Sixth Form 2009-11**

Psychology, Applied Science, History and Health & Social Care

### University

Graduated in 2014 with a BSc(Hons) in Forensic Science and Criminal Investigation (1st Class) from the University of Central Lancashire.

### What is she doing now?

She is a Forensic Data Monitor for an IT company based in Salford which specialises in software to safeguard children while they are online.



## Liam Dargan

**DACA Sixth Form 2011-13:**

Graphics, Photography, English Language & Literature and Media Studies

### University

Graduated in 2016 with a BA(Hons) in Graphic Design and Photography (1st Class) with commendation from Kingston University.

As well as setting up Dargan Media, his own freelance design business, at university he completed placements with high profile agencies such as HemingwayDesign and APM Design and worked on

a number of high profile projects, including the redesign of the Liverpool FC Museum.

### What is he doing now?

Graphic Design intern at Templo Design - a branding and digital agency which believes in the power of design as a catalyst for change and good. Clients include large corporations, government bodies, charities and start-ups.



## Oliver Turnbull

**DACA Sixth Form 2010-12**

Business Studies, Economics, Law

### University

Graduated in 2016 with a BSc (Hons) International Business (2:1) from Swansea University. At university he took advantage of the opportunity to study at Iowa State University, USA, Shanghai Advanced Institute of Finance, China and the IILM Institute for Higher Education in New Delhi, India. In addition, he was the recipient of several

prestigious awards and British Council Scholarships.

### What is he doing now?

As well as studying for an MSc in Emerging Economies and International Development at King's College, London he volunteers for several charities supporting individuals with special needs within the community. In addition, he is both founder and creative director of The Means To An End Project, an initiative to improve sustainable education in Sierra Leone.



# THE CLASS OF 2016



**Elloise Cook**

**A\*** in Photography

**A** in Fine Art

**Distinction\*** in Fashion Design

Former student of Darwen Vale High School  
and now studying Fine Art at  
Aberystwyth University



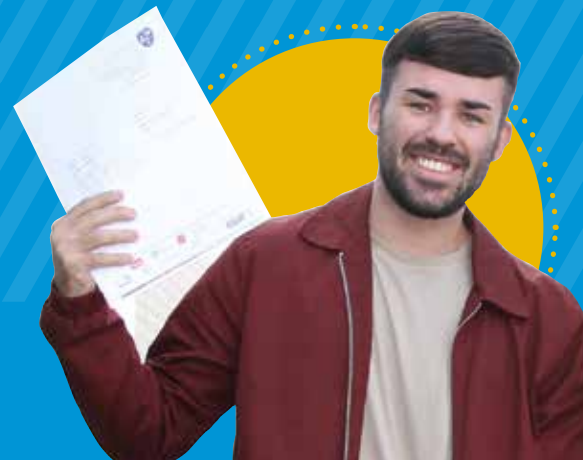
### Chloe Dickinson

**A** in Communication and Culture

**B** in Psychology

**B** in History

Former student of Darwen Vale High School  
and now studying History & Politics  
at Lancaster University



### Caitlin Biggs

**A** in Communication and Culture

**A** in History

**B** in Sociology

**Distinction\*** in Applied Law

Former student of Darwen Vale High School  
and now studying Law & Legislative Studies  
at the University of Hull

### Jazz Cragg

**Distinction\*** in Sport

**Distinction\*** in Applied Science

**Distinction\*** in Graphic Design

Former student of Darwen Aldridge  
Community Academy and now studying Sport  
and Exercise Science  
at Edge Hill University



### Ewelina Gorska

**A\*** in Fine Art

**A\*** in Photography

**B** in Art History

Former student of Darwen Aldridge  
Community Academy and now studying Fine  
Art at the University  
of Newcastle Upon Tyne



### Anesu Chinyemba

**A\*** in Fine Art

**A\*** in Photography

**Distinction\*** in Fashion Design

Former student of Blackburn Central High  
School and now studying Media and Film at  
Manchester Metropolitan University

**DARWEN ALDRIDGE COMMUNITY ACADEMY**

# 3 YEAR POST 16 PATHWAY\*

*Want to go to university, into employment or do a higher apprenticeship but might not get 5Cs ?*

t 01254 819543  
e sixthform@daca.uk.com  
w www.daca.uk.com  
@DACASixthForm  
f DACASixthForm

## YEAR 1 COURSES

- GCSE MATHEMATICS
- GCSE ENGLISH LANGUAGE
- LEVEL 2 EVENTS MANAGEMENT
- LEVEL 2 EXTENDED PROJECT & OTHER GCSEs

YEAR 1

LEVEL 2s & GCSEs

YEAR 2

A LEVELS OR BTECs

YEAR 3

A LEVELS OR BTECs

- Financial support
- Outstanding value added
- Progression to employment/apprenticeship after Yr 1 and Yr 3
- Progression to university after Yr 3

**Contact us now to find out more**

\*Grade 5s in English and Mathematics required.

OUTSTANDING THINGS HAPPEN HERE

## ENROL FROM 24TH AUGUST 2017

## Three Year Pathway

The course is specifically designed for you if you achieve grade Ds or 4s, including English Language and Mathematics, in your GCSEs but still want to be able to progress onto a university degree, high quality employment or a higher apprenticeship.

In the first year, you will gain further qualifications at Level 2 or GCSE level to enable you to progress to a programme of A Levels or Level 3 BTEC in your second and third years. During the first year, you will also work as a cohesive group, building the foundations to enable you to be successful on an A Level or L3 BTEC programme of study. The programme includes tutorial support and the development of study skills.

To progress from this programme to an A Level or Level 3 BTEC programme, you will need to satisfy the minimum entry requirements and also have demonstrated commitment and success in the first year through high attendance and achievement.

## English Language and Mathematics

If your GCSE Maths and/or English Language grades are below Grade C or 5, you have to continue studying these subjects in the Sixth Form. Most students will need to do this as part of our Three Year Pathway (see above).

Any resits you take will form the core of your timetable and will take priority over all other subjects and activities. Our aim is to help you achieve at least a Grade 5 by the end of Year 12 and you will be expected to attend all of the weekly classes for them.



# SUBJECT DIRECTORY

## Creative and Performing Arts

A Level Art and Design  
A Level Art History  
A Level Photography  
A Level Music (Performance)  
A Level Music Technology  
BTEC Level 3 Performing Arts

28-32

## Technology

A Level Design & Technology  
DEC Level 3 Architecture  
BTEC Level 3 Fashion Design and Textiles  
BTEC Level 3 Graphic Design  
BTEC Level 3 Hospitality  
NVQ Levels 1-3 Hospitality

35-37

## Science

BTEC Level 3 Applied Science  
WJEC Level 3 Medical Science  
A Level Biology  
A Level Chemistry  
A Level Physics

40-42

## English and Media

A Level English Language and Literature  
A Level English Literature  
BTEC Level 3 Creative Media (Film and TV Production)  
A Level Media Studies  
A Level Film Studies

45-47

## Humanities

WJEC Level 3 Criminology  
A Level Geography  
A Level Government and Politics  
A Level History  
A Level Philosophy and Ethics  
A Level Psychology  
A Level Sociology  
BTEC Level 3 Travel and Tourism  
BTEC Level 3 Health and Social Care  
BTEC Level 3 Law  
A Level Law

48-53

## Business, IT & Enterprise

A Level Business  
BTEC Level 3 Business  
A Level Computer Science  
BTEC Level 3 IT

33-34

## Mathematics

A Level Mathematics  
A Level Further Mathematics

39

## Sport

A Level Physical Education  
BTEC Level 3 Sport

43

## MFL

A Level French  
A Level Spanish  
A Level German

54

## AQA A LEVEL ART AND DESIGN

### DISCOVER WHAT IT MEANS TO BE A CREATIVE AND IMAGINATIVE VISUAL ARTIST

#### WHY SHOULD I STUDY ART AND DESIGN?

We provide a lively, friendly and innovative learning environment where you will be encouraged to develop your ideas, experiment, take risks and become a highly creative and imaginative visual artist. Whether you want to focus on fine art, photography, textiles, sculpture or printmaking, our very experienced staff tailor the course to meet your particular requirements. You will be encouraged to critically review your own and other student's work as well as stretch and challenge yourself with new techniques and materials in a wide variety of media. Results are some of the very best with most students achieving an A or A\*, some of who join with GCSE Grade C.

Due to the innovative way we incorporate key aspects of the Art Foundation programme into this A Level, most students save themselves a lot of time and money by being able to progress straight onto a Fine Art or related degree at university. We also have close links with universities and you will have opportunities to work with academics and undergraduates as well as visit galleries, exhibitions and degree shows.

#### WHAT CAN I STUDY IT WITH?

As an academic course it combines well with most other subjects, but particularly complements Photography, Fashion and Textiles, Art History, Graphics and Architecture.

#### WHAT CAN I DO AFTERWARDS?

Most students leapfrog an Art Foundation course and go straight to a Fine Art or related degree at a wide range of universities, including the BFA degree at the University of Oxford. Afterwards you could pursue many different careers such as advertising, graphic design, art curation, fashion design, film making, art restoration or teaching.

#### ENTRY REQUIREMENTS:

At least five GCSE Grades A\*-C or 9-5 including Art, English Language and Maths. If you don't have GCSE Art you need at least GCSE Grade C or a 5 in a related subject e.g. textiles or graphics.

**"The Sixth Form at DACA has had a huge impact on me, especially the Art faculty. My tutor and all my teachers have been very supportive. It's a great place to learn new things and meet new people."**

**Elloise Cook**  
Former student of Darwen Vale High School and now studying Fine Art at Aberystwyth University

## AQA A LEVEL ART HISTORY

### LOOKING AT ART FROM THE PAST HELPS US TO UNDERSTAND WHO WE ARE TODAY

#### WHY SHOULD I STUDY ART HISTORY?

History of Art provides you with a lively and friendly environment for focused academic discussion of the history and development of Western art and architecture. Through discussing and writing about your ideas, you will develop the skills to be able to analyse and interpret themes spanning classical Greece to the twentieth century. In particular you will develop your critical understanding of different artistic movements, artists and works, as well as how these have changed, evolved and influenced modern society.

Visits to galleries and museums are an important feature of the course: as well as local venues like Liverpool Tate and The Lowry, you will have the opportunity to visit museums and galleries in London, such as Tate Britain, the National Gallery, the V&A Museum and the Royal Academy of Art.

#### WHAT CAN I STUDY IT WITH?

An academic course, it combines well with most other subjects, but particularly complements Art, Photography, Fashion and Textiles, Graphics and Architecture.

#### WHAT CAN I DO AFTERWARDS?

Combining this course with other creative subjects lets you leapfrog an Art Foundation course and move straight to an Art History, Fine Art, Photography or other creative degree course.

Art History can lead to a career as a museum or gallery curator, arts administrator, auctioneer, art conservationist, school or college teacher and university lecturer.

#### ENTRY REQUIREMENTS:

At least five GCSE Grades A\*- C or 9-5 including Grade B or 6 in English Language and Grade C or 5 in Art and Maths. If you don't have GCSE Art you need at least Grade C or a 5 in a related subject e.g. textiles or graphics.

**"Thanks to the hard work and support of all the great staff in the Sixth Form, I'm now following my dream and studying for a degree in Fine Art. I could not have done it without them."**

**Ewelina Gorska**  
Former student of Darwen Aldridge Community Academy and now studying Fine Art at the University of Newcastle

## AQA A LEVEL MUSIC (PERFORMANCE)

### STUDY MUSIC FROM DIFFERENT CULTURES AND PERIODS AS WELL AS DEVELOP AS A CREATIVE AND INDIVIDUAL PERFORMER

#### WHY SHOULD I STUDY MUSIC (PERFORMANCE)?

Music is constantly evolving, inspiring creativity and expression in a way that no other subject can. This course is an ideal choice for you if you have a passion for learning about, performing and composing various genres of music. On the performance side, you will work solo as well as in groups to practice and stage live performances. This course will bring listening, performance and composition to life for you in new and highly engaging ways, helping to broaden your mind and foster a love of all music.

Our friendly and experienced staff will help you tailor the course to suit your individual strengths and you can be assessed using vocal, instrumental and music technology performances. Developing and applying the musical

knowledge, understanding and skills learned in classes will assist you in forming a personal and meaningful relationship with music. Staff will also encourage you to engage critically and creatively with a wide range of music and musical contexts, as well as reflect on how music is used to express personal and collective identities. You will have several opportunities to take part in workshops with professional musicians, attend gigs and visit university music departments. We also have a strong and varied extracurricular programme including our highly regarded choir, forming your own band and performing in public e.g. Darwen Live.

#### WHAT CAN I STUDY IT WITH?

It most naturally links with other creative subjects such as Performing Arts, Music Technology, Art and Photography.

#### WHAT CAN I DO AFTERWARDS?

The course provides secure foundations for progression onto music-based degree courses: previous students have gained places to study music, popular music and studio production. It also forms a strong basis for becoming a professional session singer or stage artist in musical theatre.

#### ENTRY REQUIREMENTS:

At least five GCSE Grades A\*-B or 9-6, including English Language, Maths and Music.

## AQA A LEVEL MUSIC TECHNOLOGY

### ACQUIRE THE ARTISTIC AND TECHNICAL SKILLS NEEDED TO DEVELOP A CAREER IN MUSIC RECORDING AND PRODUCTION

#### WHY SHOULD I STUDY MUSIC TECHNOLOGY?

Music Technology is a very creative and practical subject which provides you with the skills needed to successfully create, mix and produce music in a variety of contemporary styles for a range of media including live performances, film soundtracks and games. Our specialist staff will help you learn advanced music hardware and software skills in excellent facilities, including a recording studio, teaching room with iMacs equipped with industry-standard software and practice rooms. There are also opportunities for workshops with professional musicians and music technologists as well visits to gigs and university music technology departments. Many students also take part in regular public performances as part of a student band, ensemble or our choir.

#### WHAT CAN I STUDY IT WITH?

Music Technology combines well with any other subject offered in the Sixth Form. However, it most naturally complements other creative subjects such as Music, Art and Photography.

#### WHAT CAN I DO AFTERWARDS?

The course provides an excellent foundation for becoming a music producer, studio engineer, composer, promoter, events manager, artist's agent and teacher. Students have progressed

onto degrees in music, music technology and studio production and some have become session musicians.

#### ENTRY REQUIREMENTS:

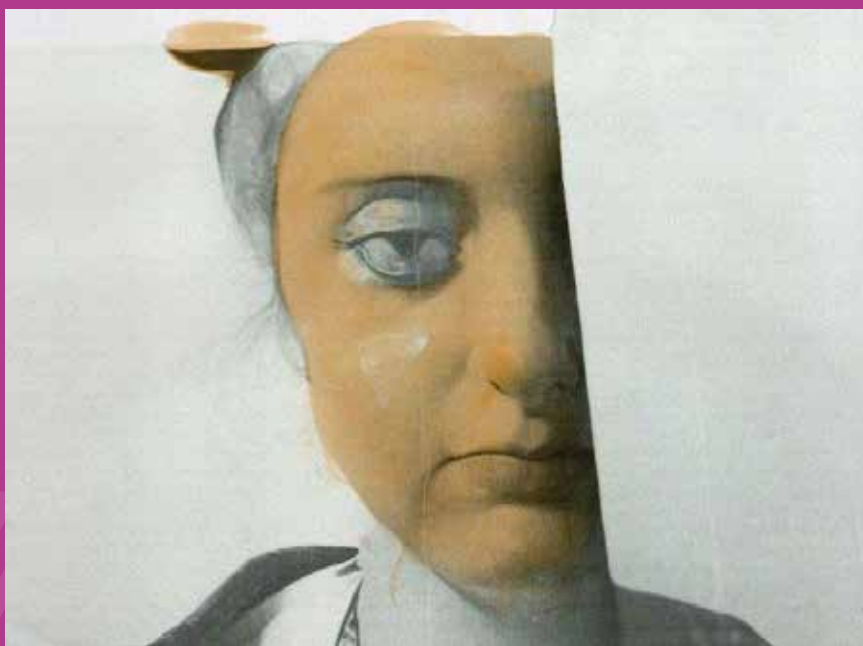
At least five GCSE Grades A\*-C or 9-5 including English Language and Maths. Some experience of using music software and playing an instrument is preferred but not essential.

**“Studying in the Sixth Form was a fantastic experience. The staff were all really supportive, wanted the very best for students and helped me achieve my long-held ambition of studying for a degree in music.”**

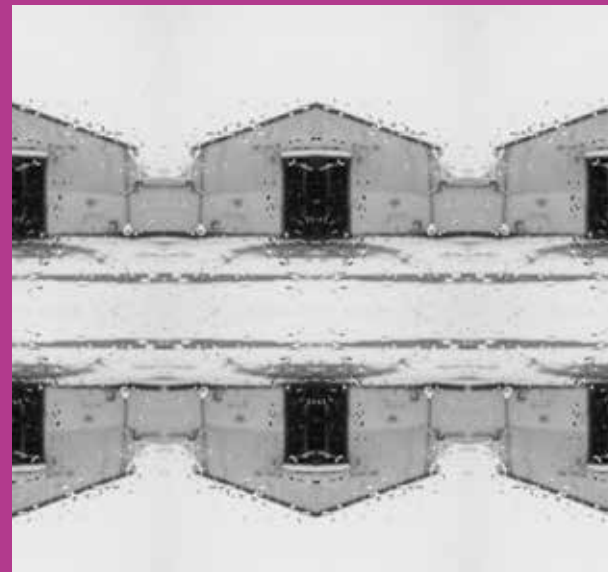
**Oliver Harkness**  
Former student of Darwen Aldridge Community Academy and now studying BA (Hons) Professional Musicianship (Drums) at BIMM, Manchester.











## BTEC LEVEL 3 PERFORMING ARTS

### EXTENDED CERTIFICATE, FOUNDATION DIPLOMA OR DIPLOMA

#### WHY SHOULD I STUDY PERFORMING ARTS

Performing Arts is ideal if you want to work with creative and inspiring teachers to perfect your skills in acting, singing and choreographed sequences through rehearsals and performing in plays, shows and concerts. People choose to study Performing Arts for different reasons and there are many personal benefits to getting involved, whether for a prospective career or just because you enjoy it. Whatever your reason, you will develop skills which make you irresistible to universities and future employers, such as being confident, creative, charismatic and committed to achieving your best. Facilities are excellent and include a 250-seat theatre and practice rooms. Results are also excellent with most students achieving Distinction or Distinction\*. As well as putting on several productions of its own each year, the department collaborates closely with Music and Art to offer you additional performance opportunities.

#### WHAT CAN I STUDY IT WITH?

Performing Arts combines well with most courses but students tend to take it alongside one or more of Music, Art, Photography, Fashion and Textiles, English Literature, English Language and Literature, Media Studies and Film Studies.

#### WHAT CAN I DO AFTERWARDS?

The course provides an excellent preparation for a range of degree courses and previous students are now studying drama, acting, performing arts, popular music, musical theatre, theatre production and costume design at university. Future careers include becoming an actor, choreographer, director, performer, stage manager, scenery and lighting designer, costume designer and teaching.

#### ENTRY REQUIREMENTS:

At least five GCSE Grades A\*-C or 9-5, including English Language and Maths. Grade C or a 5 in GCSE Drama or previous performing experience is desirable but not essential.



## AQA A LEVEL PHOTOGRAPHY

### DEEPEN YOUR UNDERSTANDING OF THE VISUAL WORLD ACROSS DIFFERENT TIMES AND CULTURES AS WELL AS THE DIVERSE ROLES AND FUNCTIONS OF PHOTOGRAPHY IN CONTEMPORARY LIFE



By incorporating key aspects of the Art Foundation programme we help students save themselves a lot of time and money by being able to leapfrog the Art Foundation year and progress straight onto a degree. Our close links with universities also provide opportunities for you to work with academics and current undergraduates.

#### WHAT CAN I STUDY IT WITH?

As an A Level it sits comfortably alongside most other subjects. However, it particularly complements Art, Art History, Graphics, Fashion and Textiles, Film Studies, Media Studies and Architecture.

#### WHAT CAN I DO AFTERWARDS?

Students regularly progress straight onto a Photography and related art degrees at universities highly regarded for their programmes e.g. University of Oxford, Kingston University and Leeds College of Art and Design. It's ideal for a career in photojournalism, fashion photography advertising, graphic design or related areas.

#### ENTRY REQUIREMENTS:

At least five GCSE Grades A\*-C or 9-5, including English Language and Maths. At least Grade C or a 5 in Art, Photography or a related subject is desirable, but not essential.

#### WHY SHOULD I STUDY PHOTOGRAPHY?

Our friendly and experienced teachers will help you develop your creative, technical and expressive skills to a high standard. As well as strong composition and presentation skills, you will develop the ability to critically review your own work and that of professional photographers. Our staff also tailor the course to meet your individual interests whether this is portraiture, landscape, experimental imagery, photojournalism or still life. Using professional digital cameras, iMac computers and industry-standard editing software you will produce work of a professional standard. Consequently, our results are some of the very best and many students achieve an A or A\*, some of whom join from high school with Grade Cs. We also visit exhibitions, galleries and degree shows.



# AQA A LEVEL BUSINESS

**AS THE UK BECOMES MORE DEPENDENT ON TRADE AND INVESTMENT, THE DEMAND FOR WELL-TRAINED BUSINESS PEOPLE GROWS STRONGER**

## WHY SHOULD I STUDY A LEVEL BUSINESS?

If you can see yourself as the next Apprentice or pitching your business idea in The Dragons' Den, then A Level Business is a perfect choice for you. Through exploring financial, marketing, economic, human resources, legal and business leadership issues under the guidance of friendly and experienced staff in our excellent facilities, you will develop a detailed understanding of how a successful business operates as well as develop your skills and qualities as an entrepreneur. Real life case studies, investigating current news stories, visits to local firms and conferences and presentations by guest speakers are all important features of the course. We have previously welcomed speakers from Graham and Brown, British Telecom and Crown Paints. We would also strongly encourage you to join the Career Ready enrichment programme. Previously, some students have also started their own businesses with Darwen Creates.

## WHAT CAN I STUDY IT WITH?

As an A Level, it combines well with most other subjects. The analytical approach used is similar to Mathematics and the sciences, while the essay writing and research techniques complement those needed in subjects like Law, Geography, History, English etc.

## WHAT CAN I DO AFTERWARDS?

It provides excellent preparation for studying a business or related degree or a specialised advanced apprenticeship. Eventually it can lead to a career in business administration, management, business development, marketing, human resources and finance and accounting.

## ENTRY REQUIREMENTS:

At least five GCSE Grades A\*-B, or 9-6, including English Language. At least Grade C or a 5 in GCSE Maths is essential.

**"I really enjoyed studying A Level Business. The teacher always made sure the course was up to date and relevant to the real world. I also really enjoyed applying business concepts to local businesses such as Crown Paints as well as taking part in business competitions like Micro-Tyco."**

Olympia Grimbaldston  
Former student of Darwen Aldridge  
Community Academy and now  
studying International Business  
Management and Spanish at  
Northumbria University

# BTEC LEVEL 3 BUSINESS

**EXTENDED CERTIFICATE, FOUNDATION DIPLOMA OR DIPLOMA**

## WHY SHOULD I STUDY BTEC LEVEL 3 BUSINESS?

This is a good choice for you if you have an interest in business and wish to become an entrepreneur, pursue a business management career or study for a business or related degree at university. With guidance from our experienced and friendly staff in our dedicated well equipped facilities, you will develop a very good knowledge and understanding of Resource Management, Human Resources, Marketing, Accounting, Retailing, Health and Safety and preparing a detailed Business Plan. If you don't just want to take examinations and would prefer to do some coursework too, then this is another good reason for you to take this course. Moreover, most students achieve a Distinction or Distinction\*.

You will also have the opportunity to attend business related visits as well as join the Career Ready enrichment programme and hopefully secure a paid internship. Previously, some students have also started their own businesses with Darwen Creates.

## WHAT CAN I STUDY IT WITH?

The course combines well with A Levels and BTEC Level 3 courses in related subjects such as Law, IT, Travel and Tourism and Architecture. However, as long as you have the necessary qualifications, you can combine it with any other subject.

## WHAT CAN I DO AFTERWARDS?

Following the general course or one of the specialist pathways (e.g. marketing) will prepare you for progression onto a wide range of business degree courses at university. This is also a very good option if you are considering progressing onto an advanced apprenticeship in one of the many functions of a business.

## ENTRY REQUIREMENTS:

At least five GCSE Grades A\*-C or 9-5, including English Language and Maths. It is not necessary to have studied the subject previously.

**"The Sixth Form has given me the best opportunity to achieve what I want. The facilities and friendly environment help you to get a good education whilst having fun. Getting excellent grades whilst being able to play netball at a competitive level gave me the best of both worlds."**

Victoria Kay  
Former student of Darwen Aldridge  
Community Academy and now  
studying Business Management  
with Accounting and Finance at  
Nottingham Trent University

## AQA A LEVEL COMPUTER SCIENCE

**GIVE YOUR CAREER A HEAD START BY LEARNING ADVANCED PROGRAMMING TECHNIQUES AND THE SKILLS FOR SOLVING COMPLEX REAL-LIFE PROBLEMS**

### WHY SHOULD I STUDY COMPUTER SCIENCE?

Computer Science is an exciting, rapidly growing and academically challenging subject which will help you gain a detailed knowledge and understanding of programming and algorithms to be able to successfully write your own software. All sectors need programmers and whether you aim to become a games developer, cyber-security specialist, create a successful app or any one of a wide range of occupations, this course is ideal for getting you started on a successful career. In our well-equipped dedicated computer labs you will learn high-level languages from our experienced and specialist teachers, as well as how to design algorithms and write programs to solve problems. The individual project provides you with an excellent opportunity to stretch and challenge yourself by producing your own complex program to solve a real-life technology-based problem. You will also learn about hardware, internet structure and protocols, operating systems, networking and databases.

### WHAT CAN I STUDY IT WITH?

As well as either Mathematics or Further Mathematics (which we strongly recommend), as an academic course it combines well with most other courses.

### WHAT CAN I DO AFTERWARDS?

The course will prepare you very well for a computing or related degree course, or a specialised advanced apprenticeship. There is a growing demand for programmers in a wide range of industries, including finance and banking, engineering research, computer games design, cyber security, social networking and medical research.

### ENTRY REQUIREMENTS:

At least five GCSE Grades A\*-B or 9-6, including English Language, Mathematics and Computer Studies.

**"In Year 11 I hadn't thought about going to university and now just a few years later I'm about to begin studying for a degree. The Academy gave me huge support and encouragement and all of the staff worked really hard on my behalf. I can't thank them enough."**

**James Cooper**  
Former student of Darwen Aldridge Community Academy and now studying Policing at Edge Hill University

## BTEC LEVEL 3 IT

**EXTENDED CERTIFICATE**

### WHY SHOULD I STUDY BTEC LEVEL 3 IT?

Very well respected by universities and employers and equivalent to an A Level, this course provides you with an hands-on approach to learning high level IT skills. Moreover, all assessment is through a combination of exams and coursework. Under the guidance of our experienced specialist teachers in our well-equipped dedicated computer labs, you will develop an indepth understanding of IT as well as develop your practical IT problem-solving skills. You will also have the opportunity to study a choice of specialist units including programming, designing websites and developing games.

### WHAT CAN I STUDY IT WITH?

It combines particularly well with Business, Design & Technology, Applied Science, Travel and Tourism, Graphics and Architecture. However, as long as you are qualified there are no restrictions on what you can combine it with.

### WHAT CAN I DO AFTERWARDS?

Employment prospects for IT graduates are very good. It is also an excellent choice if you want to prepare yourself for a degree in engineering, games design, graphic design and building design. It also provides an excellent foundation if you plan to progress onto a specialised advanced apprenticeship.

### ENTRY REQUIREMENTS:

At least five GCSE Grades A\*-C or 9-5, including English Language and Maths. It is not necessary to have studied the subject previously

**"Coming into the Sixth Form was the best decision I've made. The excellent facilities and great staff have helped me to get grades better than I thought possible. Now I'm really looking forward to university – something I wasn't even considering in Year 11."**

**Shoaib Ahmed**  
Former student of Darwen Aldridge Community Academy and now studying Software Engineering at the University of Central Lancashire

# AQA A LEVEL DESIGN & TECHNOLOGY

**DEVELOP A TECHNOLOGICALLY INNOVATIVE APPROACH TO THE DESIGN AND CREATION OF BEAUTIFUL, INGENIOUS, FUNCTIONALLY VIABLE PRODUCTS**

## WHY SHOULD I STUDY DESIGN & TECHNOLOGY?

Are you excited by new gadgets? Are you interested in how technology can improve the design and function of everyday items? Do you enjoy being creative and solving problems? If 'Yes' then you will really enjoy this subject. The course is based on designing and producing new products. Once you have come up with an idea, you will test it by creating a prototype. You will also consider and evaluate the materials best suited for the product, the technology required for its production and the way that the product will meet the user's needs.

As well as learning important technical principles, you will spend time in our specialist design studio developing high standard design and manufacturing skills. The studio is very well equipped with industry standard CAD-software and specialist design technology, including laser cutters, thermo-formers and a 3D printer. Students have previously designed and produced a wide range of products

and whatever your strengths and interests our dedicated and knowledgeable teachers will tailor the course and design briefs to fully stretch and challenge you.

## WHAT CAN I STUDY IT WITH?

It works particularly well alongside Graphics, Computer Science, Art, IT, Architecture, Physics and Mathematics.

## WHAT CAN I DO AFTERWARDS?

You will be very well prepared for design-based or related courses at university. Career options include consumer product design, marketing, industrial design consultancy, project planning, technical sales, furniture design, CAD/CAM, buying, interior/exterior design, advertising and display design.

## ENTRY REQUIREMENTS:

At least five GCSE Grades A\*-C or 9-5, including Grade C or 5 in English Language, Maths and DT or a related subject (e.g. Art). However, without GCSE DT (or equivalent) you will need at least Grade B or 6 in English Language.



# DEC LEVEL 3 ARCHITECTURE

**LEARN HOW TO DESIGN INNOVATIVE PLACES AND ENVIRONMENTS WHERE PEOPLE LIVE, WORK, LEARN AND ENJOY LIFE**

## WHY SHOULD I STUDY ARCHITECTURE?

If you enjoy being creative, solving problems and are interested in how buildings are designed and built then you will really enjoy this innovative, challenging and exciting course. In our well-equipped teaching rooms, our skilled teachers will help you study different forms of architecture, learn about building construction methods and use industry-standard architectural software to create your own designs. Essential elements of the course are site visits and working on live projects with professional architects. Working closely with AHR, a multiple award winning architecture practice, you will develop a detailed understanding of sustainable building design and construction techniques, building materials and how to manage construction projects so they are completed on time and on budget.

## WHAT CAN I STUDY IT WITH?

With its unique blend of creative, design and engineering skills, it works very well alongside Art, Graphics, Mathematics, Physics, IT and Design & Technology.

## WHAT CAN I DO AFTERWARDS?

Equivalent to an A Level, it will provide you with an excellent foundation for developing a professional career in the built environment sector. As well as a degree in architecture or related field like civil engineering, construction management or surveying, you may also choose to pursue an advanced apprenticeship in building information modelling. Career options include Architect, Architectural Technologist, Quantity Surveyor, Project Manager, Building Surveyor and Civil Engineer.

## ENTRY REQUIREMENTS:

At least five GCSE Grades A\*-C or 9-5, including English Language and Maths. Previous experience is not required.

**"Architecture is a really good subject to take. We are learning a lot about design, creativity and how to improve our built environment. Learning how to use professional architectural software and designing buildings with it is amazing."**

**David Cunningham**  
Former student of St Wilfrid's CE Academy, now studying Architecture, English Literature and Film and TV Production



# BTEC LEVEL 3 FASHION DESIGN AND TEXTILES

## EXTENDED CERTIFICATE, FOUNDATION DIPLOMA OR DIPLOMA

### WHY SHOULD I STUDY FASHION DESIGN AND TEXTILES?

If you're creative and artistic, have an eye for detail and a good understanding of colour, texture and fabric quality then you will really enjoy this course.

In our dedicated teaching rooms in fun, challenging and practical lessons, our enthusiastic and experienced teachers will help you develop your fashion and textile design skills and ideas in innovative and creative ways which stretch and challenge you as well as suit your personal strengths and interests. You will develop a detailed understanding of visual communication, fashion illustration, garment construction, pattern cutting, textiles, embroidery, marketing, and the history of fashion. You will also develop a high quality portfolio, which can be used for university and employment interviews and as a promotional tool to support freelance work if you choose to go down this pathway. An important part of the course is engaging with professional fashion and textile designers and visiting collections and university fashion shows. You will also exhibit your work at the end of each year.

### WHAT CAN I STUDY IT WITH?

It combines extremely well with any other creative subject such as Art, Photography, Graphics, Design & Technology and Architecture and also blends well with Performing Arts and Business.

### WHAT CAN I DO AFTERWARDS?

The course prepares you very well for a wide range of fashion, textile and related degree courses. Possible careers include fashion designer, fashion retail and marketing, visual merchandising, fashion buyer, journalism, magazine editing and fashion photography.

### ENTRY REQUIREMENTS:

At least five GCSE Grades A\*-C or 9-5, including Grade Cs or 5s in English Language and Maths. Previous experience is not required.

**"I really enjoyed the hardworking and fun atmosphere. My teachers helped me to develop my design and making skills and creativity to a high standard as well as produce an amazing portfolio. I feel very confident about being ready to start my degree."**

**Georgia Walsh**  
Former student of Darwen Aldridge Community Academy and now studying Fashion Design and Marketing at Manchester Metropolitan University.

# BTEC LEVEL 3 GRAPHICS

## EXTENDED CERTIFICATE, FOUNDATION DIPLOMA OR DIPLOMA

### WHY SHOULD I STUDY GRAPHICS?

We live in a highly visual society from posters, packaging and illustration to web design and animation. If you are interested in design, branding and typography and enjoy being creative and solving problems then you will enjoy this course. We provide you with a dedicated graphic design studio equipped with iMacs and industry-standard software such as Photoshop and InDesign.

Our knowledgeable and friendly teachers will help you to develop an advanced understanding of visual communication through a variety of artistic materials, and techniques from art, photography, printmaking, typography and computer-aided design. Our strong industry connections also provide opportunities for you to work on live briefs, secure work placements and start up your own business. Whatever your strengths and interests, we ensure you are stretched and challenged and fulfil your creative potential. Many students say it is their favourite subject and move on to study Graphics or a related course at university.

### WHAT CAN I STUDY IT WITH?

As long as you're qualified you can combine it with any other subject. However, it works particularly well with Photography, Art, IT, Computing, Architecture, Media Studies and Business.

### WHAT CAN I DO AFTERWARDS?

Most students progress onto graphic design or a related course at university. Some have used their advanced skills to gain employment as well as start their own businesses after Sixth Form. Good career opportunities exist in branding, advertising, digital moving image, packaging and 3D design and information design.

### ENTRY REQUIREMENTS:

At least five GCSE Grades A\*-C or 9-5, including English Language and Mathematics. Previous experience is not required.

**"The whole way Graphics is taught, from the professional knowledge, skills and attitude developed in class to being encouraged to solve clients' problems by thinking differently, taking risks and being informative and entertaining made me look forward to every lesson. My teachers were excellent and helped make sure I got the place I wanted at university."**

**Harry Eastham**  
Former student of Darwen Aldridge Community Academy and now studying Graphic Design and Photography at Kingston University

# BTEC LEVEL 3 HOSPITALITY

## EXTENDED CERTIFICATE & FOUNDATION DIPLOMA

### WHY SHOULD I STUDY HOSPITALITY?

Can you see yourself managing a five-star hotel, planning corporate events, working in food technology or food safety? If so this exciting and practical course will help you to develop the knowledge and skills you'll need to start you on the path to your dream career. In our well-equipped dedicated teaching rooms our experienced and friendly teachers will help you to develop advanced customer service, management, event planning and technical food preparation and presentation skills.

A vital part of the course is visiting and learning from hospitality events and organisations like the Manchester Winter Market and high quality hotels ranging from international chains like Marriot to local independent boutique establishments.

### WHAT CAN I STUDY IT WITH?

The course combines very well with Applied Science, Biology, Business, Travel and Tourism and Health and Social Care.

### WHAT CAN I DO AFTERWARDS?

It provides an excellent foundation for progression onto a wide range of degree courses and careers including hospitality management, events management, resort management, environmental health, food technology and nutrition. You can also progress onto an advanced apprenticeship with large hotel and hospitality chains.

### ENTRY REQUIREMENTS:

At least five GCSE Grades A\*-C or 9-5, including Grade Cs or 5s in English Language and Maths. Previous experience is not required.



# NVQ LEVELS 1-3 HOSPITALITY AND CATERING

### WHY SHOULD I STUDY NVQ HOSPITALITY AND CATERING?

This course is suitable for you if you wish to start or continue a career in professional cookery. It offers a flexible selection of units, and as well as professional food preparation and kitchen management skills you will develop valuable retail skills and experience in organising and managing large-scale catering events. There is also the opportunity for you to gain vital business skills by becoming involved in running Academy catering concessions.

You will be trained by professional chefs with many years of experience who will challenge and inspire you to achieve advanced culinary and front-of-house skills and progress through Levels 1 to 3. During the course we can also help you to start up your own hospitality/ catering company through our Darwen Creates business development programme. If required, you can also resit GCSE Maths and English Language or take an equivalent Functional Skills qualification.

Upon completion of Levels 1 and 2 you will have the skills and knowledge to either start your own business, commence employment or begin an Apprenticeship. Upon completion of Level 3 you will also have the theoretical knowledge and skills to be able to progress onto an Advanced Apprenticeship or university course in Hospitality, Hotel Management or similar.

### ENTRY REQUIREMENTS:

At least three GCSE Grade Ds or 4s. More qualified or experienced students may be able to commence the Level 2 course.

**"The lessons were always fun and interesting and I really enjoyed the mixture of theoretical and practical learning, especially when we made restaurant-standard dishes. The teachers were very friendly and helped me to get a Distinction\*. I really enjoyed this subject and I'm sure you will too."**

**Rosie Hilliard**  
Former student of Darwen Aldridge Community Academy and now studying Hospitality Management at Blackburn University College.









# EDEXCEL A LEVEL MATHEMATICS

**MATHEMATICS PROVIDES YOU WITH A BROAD RANGE OF SKILLS IN PROBLEM SOLVING, LOGICAL REASONING AND FLEXIBLE THINKING, AND LEADS TO EXCITING AND CHALLENGING CAREERS**

## WHY SHOULD I STUDY MATHEMATICS?

Mathematics is the universal tool and language of commerce, engineering and other sciences - physics, computing, biology etc. It helps us recognise patterns and to understand the world around us. Mathematics plays a vital, often unseen, role in many aspects of modern life, for example air and space travel, safeguarding credit card details on the internet, modelling the spread of diseases and business decision making.

Mathematics is an exciting subject and taking a real world problem and creating and applying mathematical models to aid understanding is hugely satisfying and rewarding. This is a good choice of subject for you if you enjoy solving problems and want to study a challenging, rewarding and versatile subject. You'll need to be confident with the algebra used at GCSE (Higher Level) and have a keen interest in developing your knowledge of calculus and statistics. Although Grade 9-7 is preferred at GCSE, you can commence the course with a Grade 6.

## WHAT CAN I STUDY IT WITH?

Many of our students choose it to support their other subject choices, although it combines well with any other subject. We strongly recommend it if you're also planning to take Physics, Chemistry or Computer Science.

## WHAT CAN I DO AFTERWARDS?

It will provide you with excellent preparation for a wide range of mathematics, science, business and related degree courses. Mathematics graduates have one of the highest rates of employment and are employed in careers in a very wide range of industries.

## ENTRY REQUIREMENTS:

At least five GCSE Grades A\*-B or 9-6, including English Language and Maths, although an A\* or A or 9-7 in Maths is strongly preferred.

**"The staff at DACA really believe in everyone's potential to succeed, and I'm sure you will enjoy it as much as I have."**

**Callum Hayes-Smith**  
Former student of Turton High School  
and now studying Mathematics at the  
University of Liverpool

# EDEXCEL A LEVEL FURTHER MATHEMATICS

**A RIGOROUS, CHALLENGING AND STIMULATING SUBJECT FOR PEOPLE WHO WANT TO STRETCH AND CHALLENGE THEMSELVES SIGNIFICANTLY BEYOND STANDARD A LEVEL MATHEMATICS**

## WHY SHOULD I STUDY FURTHER MATHEMATICS?

Students taking Further Mathematics overwhelmingly find it an enjoyable, rewarding and stimulating experience. This is an excellent choice if you want to study an academically rigorous qualification and stretch and challenge yourself significantly beyond standard A Level Mathematics. Students who choose it almost always say it is their favourite subject! As well as exploring new and more sophisticated areas of pure mathematics, you will study further applications in mechanics, statistics and decision mathematics. It will also help make the transition from A Level to a mathematically rich degree course like mathematics, engineering, science, computing or finance/economics easier because more of the course will be familiar. Even if you only study to AS Level you will still benefit enormously as topics like matrices and complex numbers are vital in many degrees. Choosing this subject takes up two of your A Level options. In Year 12 you study AS Mathematics and AS Further Mathematics, and in Year 13 you complete the Mathematics and Further Mathematics A Levels.

## WHAT CAN I STUDY IT WITH?

Many students choose Further Mathematics (with Mathematics) alongside Physics, Chemistry or Computer Science. However, as a rigorous A Level qualification it complements all other subjects.

## WHAT CAN I DO AFTERWARDS?

It will provide you with excellent preparation for a wide range of mathematically rich degree courses. Some universities, such as Cambridge and Warwick, will also require you to have it for entry to certain courses. Mathematics graduates have one of the highest rates of employment and work in a very wide range of industries.

## ENTRY REQUIREMENTS:

At least five GCSE Grades A\*-B or 9-6, including English Language and at least Grade A or 7 in Maths, although an A\* or 9-8 is preferred.

# WJEC LEVEL 3 DIPLOMA IN MEDICAL SCIENCE

**MEDICAL SCIENTISTS ARE AT THE FOREFRONT OF HEALTHCARE SERVICES. THEY ARE VITAL IN THE DIAGNOSIS OF DISEASE, DETERMINING THE EFFECTIVENESS OF TREATMENTS AND SEARCHING FOR NEW CURES**

## WHY SHOULD I STUDY MEDICAL SCIENCE?

Medical Science is the science of dealing with the maintenance of health and the prevention and treatment of diseases. This course is the equivalent of one A Level and through a combination of practical experiments and learning scientific principles, you will develop an in-depth knowledge and understanding of human biology. In particular, you will learn in detail about health, physiology and disease, as well as aspects of pharmacology, physiological measurement, clinical testing and medical research. It is assessed using a combination of controlled assessments and examinations.

The specific units you will study are:

- Human health and disease
- Physiological measurement techniques
- Medical Science research methods
- Medicines and treatment of disease
- Clinical laboratory techniques
- Medical case study

It is particularly relevant if you wish to develop a career in biomedical research and treatment, life sciences, physiology, nursing, healthcare or sports science.

## WHAT CAN I STUDY IT WITH?

It combines very well with many other subjects, especially Chemistry, Biology, Health and Social Care, Sport and Psychology.

## WHAT CAN I DO AFTERWARDS?

It provides an excellent preparation for a wide range of healthcare and science-based degrees such as nursing, diagnostic radiology, paramedic practice, forensic science, food technology, dental technology, physiotherapy, sports therapy and sports science. Some university medical, dental, pharmacology and pharmacy schools will accept this qualification if studied alongside A Levels in Chemistry and Biology. Alternatively it will help you to be able to progress onto an Advanced Apprenticeship in clinical laboratory work within the NHS or commercial organisations.

## ENTRY REQUIREMENTS:

At least five GCSE Grades A\*-C or 9-5 including Grade B or 6 in English Language, Maths and Science.



Outstanding Things Happen Here #theSixthFormexperience

## BTEC LEVEL 3 APPLIED SCIENCE

### EXTENDED CERTIFICATE, FOUNDATION DIPLOMA OR DIPLOMA

#### WHY SHOULD I STUDY APPLIED SCIENCE?

If you're interested in the workings of the human body, forensic investigation and analysis as well as physical science then this is a great choice of subject for you! During Year 12 you will maintain a broad study of biology, chemistry and physics related topics through class and practical work, before taking specialised units. In Year 13 you can take units which will enable you to specialise in medical science, forensic science or physical science.

Forensic science: you will learn how forensic evidence is collected and analysed to gain an insight into forensic psychology and crime scene investigation.

Medical science: you will learn about the cardiovascular, respiratory, digestive and lymphatic systems, as well as the organisation of cells and tissues and central nervous system.

Physical science: you will learn about a range of issues related to applied physics such as mathematical methods to solve problems, energy changes and circuits.

#### WHAT CAN I STUDY IT WITH?

It combines very well with many others, especially Health and Social Care, Sport and Psychology.

#### WHAT CAN I DO AFTERWARDS?

It provides excellent preparation for a wide range of degrees such as sport coaching, sport science, nursing, paramedic practice, forensic science, food technology, dental technology, radiology, physiotherapy and sports therapy. Some university medical, dental and pharmacy schools will accept this qualification if studied alongside A Levels in Chemistry and Biology.

#### ENTRY REQUIREMENTS:

At least five GCSE Grades A\*-C or 9-5, including English Language, Maths and Science.

**"I was well looked after at GCSE and didn't want to go anywhere else for my Sixth Form education. My teachers were all really helpful, lessons were very interesting and I was pleased with my grades."**

**Zafar Patel**

Former student of Darwen Aldridge Community Academy and now studying Biomedical Science at Manchester Metropolitan University

## AQA A LEVEL BIOLOGY

### BIOLOGY IS THE SCIENTIFIC STUDY OF LIFE AND ENCOMPASSES THE INVESTIGATION OF LIVING ORGANISMS AND LIFE PROCESSES FROM CELLS AND INDIVIDUAL ORGANISMS TO POPULATIONS OF ANIMALS AND PLANTS

#### WHY SHOULD I STUDY BIOLOGY?

Biology is an exciting and rapidly advancing subject with a higher profile today than perhaps at any other time. Many of the important and contentious issues which society must face as it continues through the 21st Century relate to the biological sciences. Serious ethical debates surround issues such as cloning, genetically modified foods, stem cell research and the human genome project and the use of its findings. Moreover, health, pollution, global warming, disease, overuse of antibiotics, drug misuse, malnutrition and many other issues high up the political agenda make having a detailed knowledge of biology essential. You will be stretched and challenged in engaging lessons as well as undertake practical experiments and field work. We provide a very supportive environment for you to fulfil your potential.

#### WHAT CAN I STUDY IT WITH?

As an A Level, it combines well with all other subjects. It is particularly useful alongside Chemistry, Medical Science, Mathematics, Physics, Psychology, Sport, Health and Social Care, Geography and Computer Science.



#### WHAT CAN I DO AFTERWARDS?

Studying Biology will provide you with excellent opportunities to develop the knowledge and skills to progress onto a range of degrees including Medicine, Dentistry, Veterinary Science, Biochemistry, Marine Biology, Forestry, Neuroscience, Nursing, Optometry, Pharmacy, Pharmacology, Physiotherapy and Sports Science.

#### ENTRY REQUIREMENTS:

At least five GCSE Grades A\*-B or 9-6, although Grades A/A\* or 9-7 are preferred, including English Language, Maths and Biology or Core Science and Additional Science.



## AQA A LEVEL CHEMISTRY

**EVERYTHING IS CHEMICAL AND KNOWING ABOUT CHEMISTRY PROVIDES AN EXCELLENT BASIS FOR UNDERSTANDING THE PHYSICAL UNIVERSE WE LIVE IN**

### WHY SHOULD I STUDY CHEMISTRY?

Chemistry is a fascinating field of study. Because it is so fundamental to our world, chemistry plays a role in everyone's lives and touches almost every aspect of our existence in some way. Chemistry is essential for meeting our basic needs of food, clothing, shelter, health, energy, and clean air, water, and soil. Chemical technologies enrich our quality of life in numerous ways by providing new solutions to problems in health, materials, and energy usage. Thus, studying chemistry is useful in preparing us for the real world and leads to a variety of challenging and stimulating careers. Engaging lessons, discussions and experimental work in a friendly and supportive environment will ensure you're stretched and challenged and fulfil your potential.

### WHAT CAN I STUDY IT WITH?

As an A Level It can be studied with any other subject, but combines most usefully with Biology, Medical Science, Mathematics and Geography.

### WHAT CAN I DO AFTERWARDS?

It is highly regarded by university admissions tutors and studying Chemistry will provide you with an excellent opportunity to develop the knowledge and skills necessary to be able to progress onto a wide range of degree programmes, including Medicine, Dentistry, Veterinary Science, Chemical Engineering, Pharmacy, Pharmacology and Forensic Science.

### ENTRY REQUIREMENTS:

At least five GCSE Grades A\*-B or 9-6, although Grades A/A\* or 9-7 are preferred, including English Language, Maths and Chemistry or Core Science and Additional Science.



## AQA A LEVEL PHYSICS

**PHYSICS ENCOMPASSES THE STUDY OF THE UNIVERSE FROM THE LARGEST GALAXIES TO THE SMALLEST SUBATOMIC PARTICLES**

### WHY SHOULD I STUDY PHYSICS?

Physics is crucial to understanding the world around us, the world inside us, and the world beyond us. Studying Physics will enable you to ask really big questions like 'How did the universe begin?' and 'What are the basic building blocks of matter?'. However, Physics isn't just theoretical and it is applied everywhere, such as in the design and construction of buildings, new communication and computing technologies, developing sustainable forms of energy and diagnosing and treating illnesses to name but a few. Through the study of topics like particles, quantum phenomena, electricity, mechanics, nuclear and thermal physics you will develop the skills and knowledge needed to understand the new discoveries occurring at the frontiers of science. In our supportive and friendly classes you will complete lessons, practical work and take part in discussions to ensure you achieve your potential.

During Year 12 you will have the opportunity to visit the world's largest particle physics laboratory at CERN in Switzerland. We also recommend you study Physics in combination with Mathematics or Further Mathematics.

### WHAT CAN I STUDY IT WITH?

As an A Level it can be studied with any other subject, but combines most usefully with Mathematics, Chemistry, Biology, Computer Science and Architecture.

### WHAT CAN I DO AFTERWARDS?

A Level Physics is highly regarded by universities and employers. It enables you to go on to study a wide range of degrees including Physics, Aerospace Engineering, Mechanical Engineering, Civil Engineering, Structural Engineering, Electronic/Electrical Engineering, Computer Science, Architecture, Geophysics, Meteorology, Astrophysics and Nanotechnology.

### ENTRY REQUIREMENTS:

At least five GCSE Grades A\*-B or 9-6, although Grades A/A\* or 9-7 are preferred, including English Language, Maths and Physics or Core Science and Additional Science.



# AQA A LEVEL PHYSICAL EDUCATION

**LEARN HOW THE HEALTHY HUMAN BODY WORKS DURING EXERCISE, AND HOW SPORT AND PHYSICAL ACTIVITY PROMOTE HEALTH FROM A CELLULAR LEVEL TO THE WHOLE BODY**

## WHY SHOULD I STUDY PHYSICAL EDUCATION?

Do you want to help talented amateurs, both young and old, as well as professional athletes to improve their sporting performance? Are you keen to improve your knowledge of human anatomy and physiology, bio-mechanics, psychology, nutrition and coaching skills? Are you aspiring to become a physiotherapist, sport therapist, doctor, dentist, sports scientist, strength and conditioning coach or teacher? If so this is a really good subject for you.

You will also have plenty of opportunities to work on developing your own fitness as well applying your new skills and knowledge by coaching KS3 students in their lessons. Our experienced, enthusiastic and friendly staff will teach you in our very impressive facilities which include dedicated classrooms equipped with IT, a flood-lit full-size 3G pitch, two FA standard grass pitches, multi-user games area, state-of-the-art sports hall and a fully equipped fitness suite.

We also make use of the facilities and swimming pool at Darwen Leisure Centre. Each year many of our students progress onto university to study related courses.



## WHAT CAN I STUDY IT WITH?

As a science A Level it particularly complements Biology, Medical Science, Sport, Chemistry, Mathematics, Physics, Applied Science and Psychology. However, as long as you're qualified you can study it alongside any subject.

## WHAT CAN I DO AFTERWARDS?

It prepares you extremely well for progression onto a wide range of sport science and sport-related degree courses. Popular careers include PE teacher, performance analyst, sport development officer, sports medicine (e.g. physiotherapist) and personal trainer.

## ENTRY REQUIREMENTS:

At least five GCSE Grades A\*-B or 9-6, including English Language, Maths and Science. You should also have participated in a sport to at least Town, and ideally, County standard.

# BTEC LEVEL 3 SPORT

**EXTENDED CERTIFICATE, FOUNDATION DIPLOMA OR DIPLOMA**

## WHY SHOULD I STUDY SPORT?

If you're keen on learning more about fitness and coaching sport, how different systems in the body respond to exercise and nutrition as well as how to spot the sporting talents of the future then this is an excellent choice of subject. You will also have plenty of opportunities to work on developing your own fitness and coaching skills in lessons as well as volunteering as a coach in lessons for younger students at the Academy and local primary schools. In turn you'll be able to use this experience to gain your coaching badges.

A key element is developing the skills and knowledge to be able to assess an individual's level of fitness and then plan and evaluate a training programme for them. You will be taught by our experienced, enthusiastic and friendly staff in our impressive facilities which include dedicated classrooms equipped with IT, a floodlit full-size 3G pitch, state-of-the-art sports hall and a fully equipped fitness suite.

## WHAT CAN I STUDY IT WITH?

It works well alongside most other subjects and particularly complements Biology, Medical Science, Applied Science, Psychology and Health and Social Care.

## WHAT CAN I DO AFTERWARDS?

The course serves as an excellent foundation for a wide range of sport-related degree courses such as PE and School Sport, Sports Studies and Sport Coaching. Every year many of our students who have studied the course continue to study it at university. Popular careers include PE teacher, sports coach, sport development officer and sport therapist.

## ENTRY REQUIREMENTS:

At least five GCSE Grades A\*-C or 9-5, including English Language and Maths.









# OCR A LEVEL ENGLISH LANGUAGE AND LITERATURE

**THE STUDY OF ENGLISH LANGUAGE AND LITERATURE OPENS UP THE WORLD OF HUMAN EXPRESSION AND COMMUNICATION**

## WHY SHOULD I STUDY ENGLISH LANGUAGE AND LITERATURE?

This course is a good choice if you love reading for pleasure and wish to study an exciting and academically challenging subject which will help you develop advanced skills in assessing the many ways in which a diverse range of writers and speakers create meaning. In lively and fun lessons you will be stretched and challenged to fulfil your potential. As well as studying English Literature from Shakespeare to the present, you will also investigate how different writers have shaped language and been influenced by the social, historical, political and cultural events of the period in which they lived. You will also study creative writing, both literary and non-literary, and produce two pieces of creative writing inspired by your own reading. Our ambition is that studying this course leaves you with a lifelong passion for language and reading literature.

## WHAT CAN I STUDY IT WITH?

Being an academic subject it complements all other subjects offered in the Sixth Form. However it is most useful studied alongside subjects such as History, Law, Geography, Art History, Politics, Psychology, Sociology, Performing Arts and Philosophy and Ethics.

## WHAT CAN I DO AFTERWARDS?

Many of our students have gone onto study a range of English-related subjects at university including, English Language and Creative Writing as well as combining English with the study of another subject like Law. After university, you can go into a career in teaching, publishing, journalism, advertising, PR, events management, marketing or similar.

## ENTRY REQUIREMENTS:

At least five GCSE Grades A\*-B or 9-6, including English Language and at least Grade C or 5 in Maths.

**"Everyone encourages you to do your best all the time and all of the staff are really friendly and helpful."**

**Savanna Bunney**  
Former student of Darwen Aldridge Community Academy and now studying English Language and Literature at the University of Nottingham

# OCR A LEVEL ENGLISH LITERATURE

**LITERATURE SHOWS US THE LIVES OF OTHER PEOPLE AT OTHER TIMES. IT STIRS US INTELLECTUALLY AND EMOTIONALLY, AND DEEPENS OUR UNDERSTANDING OF OUR HISTORY, OUR SOCIETY, AND OUR OWN INDIVIDUAL LIVES**

## WHY SHOULD I STUDY ENGLISH LITERATURE?

Do you enjoy reading widely and regularly for pleasure? Do you enjoy analysing poetry, novels, and plays? Do you like exploring the ideas raised by authors from different periods or parts of the world? If you answered 'Yes' to these questions then you will find this subject very personally and academically rewarding. Through studying the written word in a variety of forms you will develop advanced skills in literary analysis which as well as helping to make you a more sensitive and intellectually aware critic, will also develop you as an independent, analytical and creative thinker and writer. You get to study eight texts, covering works from before and during the 20th Century and at least one of Shakespeare's plays. As well as stretching and challenging lessons in a lively and engaging atmosphere, you will also have the opportunity to attend plays, poetry and prose readings and public lectures.

## WHAT CAN I STUDY IT WITH?

As an academically rigorous subject it complements all others. However, it is a particularly good companion for History, Law, Geography, Art History, Politics, Psychology, Sociology, Performing Arts and Philosophy and Ethics.

## WHAT CAN I DO AFTERWARDS?

Universities and employers greatly value the higher order thinking skills and creativity students develop, as well as the ability to write precisely and succinctly present complex ideas. An English Literature degree serves as an excellent foundation for entry into a wide variety of careers such as the Law, teaching, journalism, marketing and publishing.

## ENTRY REQUIREMENTS:

At least five GCSE Grades A\*-B or 9-6, including English Language, English Literature and at least Grade C or 5 in Maths.



# BTEC LEVEL 3 CREATIVE MEDIA

## EXTENDED CERTIFICATE, FOUNDATION DIPLOMA OR DIPLOMA

### WHY SHOULD I STUDY CREATIVE MEDIA?

This is a very good choice of subject if you are interested in a career in the film and media production industry. The course is very practical and hands-on with a mixture of film theory and practice combined with studio, green-screen and location filming, editing and production. Visiting industry specialists and our experienced and enthusiastic staff will ensure you're stretched and challenged and the course is tailored to meet your particular strengths and interests.

In our specialist classrooms equipped with iMacs and a filming and editing studio, you will develop advanced skills in pre-production planning, single and multiple camera filming, sound recording, lighting and editing techniques to be able to produce your own high quality short films and documentaries. You will also have the opportunity to attend a residential visit to London where you can further develop your understanding of creative media.

### WHAT CAN I STUDY IT WITH?

This course combines particularly well with Media Studies, Photography, Art, Graphics, Music, Performing Arts, and English Language and Literature. However, as long as you're qualified you can combine it with any other subjects offered.

### WHAT CAN I DO AFTERWARDS?

It provides an excellent foundation for you to move onto a degree in filmmaking, film and TV production, digital media, special effects, costume and set design and scriptwriting or related subjects. Careers include setting up your own media production business, working as a director, editor or camera operator, production researcher and many others.

### ENTRY REQUIREMENTS:

At least five GCSE Grades A\*-C or 9-5, including English Language and Maths. Previous experience in this subject area is not required.

**"I deliberately chose to follow a creative pathway in the Sixth Form and loved the freedom to explore new ideas and develop new skills. I particularly enjoyed focusing on film and TV production and this inspired me to want to continue this subject at university."**

**Emma Auernigg**  
Former student of Darwen Vale High School and now studying Filmmaking at Kingston University.



Outstanding Things Happen Here #theSixthFormexperience

# AQA A LEVEL MEDIA STUDIES

**DEVELOP THE SKILLS AND UNDERSTANDING TO BE ABLE TO BLEND CREATIVE AND TECHNICAL ABILITY IN MEDIA PRODUCTION AND ANALYSIS**

## WHY SHOULD I STUDY MEDIA STUDIES?

If you're interested in the way our actions, beliefs and culture are influenced by all forms of media, want to create your own media products like film trailers and documentaries as well as develop a strong understanding of different media perspectives and theories then this course is ideal for you.

In our dedicated Media Studies classroom equipped with a suite of iMacs and high quality filming and editing technology, our enthusiastic and very knowledgeable teachers will help you develop the technical and creative skills, knowledge and understanding required to move from being a passive consumer of media products and texts to being a producer and critical analyst. In doing so, you will develop an indepth knowledge and understanding of critical media debates, concepts and issues, the ability to evaluate your own practical work and understand the codes and conventions of different media platforms such as broadcasting, e-media and print.

## WHAT CAN I STUDY IT WITH?

This course works very well alongside Creative Media, Film Studies, Photography, Art, Graphics, Performing Arts, Communication and Culture, Sociology and English Language and Literature. However, as long as you're qualified you can combine it with any

other subject.

## WHAT CAN I DO AFTERWARDS?

It provides an excellent preparation for progression onto a wide range of related degree courses and careers such as radio and TV production and broadcasting, film making, journalism, media communications, PR, marketing, advertising, digital media and journalism.

## ENTRY REQUIREMENTS:

At least five GCSE Grades A\*-B or 6-9, including at least Grade B or 6 in English Language and Grade C or 5 in Maths. Previous experience in this subject area is not required.



# WJEC A LEVEL FILM STUDIES

**FILM STUDIES OFFERS THE OPPORTUNITY TO INVESTIGATE HOW FILM WORKS BOTH AS A POWERFUL MEDIUM OF REPRESENTATION AND AS AN AESTHETIC MEDIUM**

## WHY SHOULD I STUDY FILM STUDIES?

Many consider film to be the main cultural innovation of the 20th Century and a major art form of the last hundred years. Those who study it characteristically bring with them a high degree of enthusiasm and excitement for what is a powerful and culturally significant medium, inspiring a range of responses from the emotional to the reflective.

You will be introduced to a wide variety of films in order to broaden your knowledge and understanding of film and the range of responses films can generate. This will include mainstream and independent American and British films from the past and the present as well as more recent global films, both non-English language and English language. The historical range of film represented in those films is extended by the study of silent film and significant film movements, such as European avant-garde and new wave cinemas in Europe and Asia, so that you appreciate the development of film from its early years to its still emerging digital future. Studies in documentary, experimental and short films will add to the breadth of your learning experience. Production work is a crucial part of the course and studying a diverse range of films from several different contexts will help to improve your own filmmaking and screenwriting skills.

## WHAT CAN I STUDY IT WITH?

This course works very well alongside Media Studies, Creative Media, Art History, Photography, Art, Graphics, Performing Arts, Sociology and English Literature. However, as long as you're qualified you can combine it with any other subject.

## WHAT CAN I DO AFTERWARDS?

It provides excellent preparation for progression onto a wide range of related degree courses and careers such as radio and TV production and broadcasting, filmmaking, journalism, media communications, PR, marketing, advertising, digital media and journalism.

## ENTRY REQUIREMENTS:

At least five GCSE Grades A\*-B or 9-6, including at least Grade B or 6 in English Language and Grade C or 5 in Maths. Previous experience in this subject area is not required.



## BTEC LEVEL 3 HEALTH AND SOCIAL CARE

### EXTENDED CERTIFICATE

#### WHY SHOULD I STUDY HEALTH AND SOCIAL CARE?

If you are a friendly and caring person with a desire to help people in a range of health, social care and educational settings, then this is likely to be the course for you. Our experienced and specialist teachers will help you learn the knowledge and skills to progress into a rewarding career in the health and social care sector. As well as learning about the different factors affecting behaviour, health and safety and promoting a positive care environment, you can choose units which reflect your personal interests and career ambitions e.g. child development and child protection.

There will also be opportunities for you to gain a first aid qualification, visit different healthcare settings and complete a relevant work placement. Guest speakers, such as social workers and nurses, will also provide you with career-relevant information, advice and guidance. For the last three years, most students have gained a Distinction\* grade.

#### WHAT CAN I STUDY IT WITH?

The course combines very well with A Levels and BTEC Level 3 courses in related subjects like Biology, Medical Science, Applied Science, Psychology and Sociology. However, as long as you are qualified there are no restrictions on what you can combine it with.

#### WHAT CAN I DO AFTERWARDS?

The course provides an excellent foundation for you to progress onto a wide range of health and social care degree courses. Many of our students have progressed onto studying nursing, social work, primary education, special educational needs/disability teaching and similar. It is also very suitable if you are planning to progress onto a related apprenticeship e.g. with the NHS.

#### ENTRY REQUIREMENTS:

At least five GCSE Grades A\*-C or 9-5, including English Language and Maths. It is not necessary to have studied the subject previously.



## BTEC LEVEL 3 APPLIED LAW

### EXTENDED CERTIFICATE

#### WHY SHOULD I STUDY APPLIED LAW?

This subject will help you develop a detailed knowledge and understanding of the English Legal system. It will also help develop your problem solving skills through the application of legal rules together with an understanding of legal method and reasoning. You will understand the court structure, how laws are made and different elements of civil and criminal law. This will provide you with an excellent preparation for progressing to a law or related degree or specialised advanced apprenticeship.

The Extended Certificate is also equivalent to one A Level and assessment is through a combination of coursework, projects and an exam. While on the course, you will have opportunities to complete relevant work experience as well as visit conferences, Crown Court trials and the Houses of Parliament. We will also encourage you to join the Career Ready enrichment activity.

#### WHAT CAN I STUDY IT WITH?

The course combines well with BTEC Level 3 courses or A Levels in related subjects such as Business, IT, History and Government & Politics. However, as long as you are qualified there are no restrictions on what you can combine it with.

#### WHAT CAN I DO AFTERWARDS?

This subject provides excellent preparation for progression onto a law degree. This is a particularly good option if you are considering a career as a solicitor, barrister, legal executive, legal advice centre worker, police officer, social worker, probation officer or similar.

#### ENTRY REQUIREMENTS:

At least five GCSE Grades A\*-C or 9-5, including English Language and Maths. It is not necessary to have studied GCSE Law.

**"Studying Law has given me a real headstart for my degree and future career. I have acquired the skills of thinking like a lawyer, a breadth and depth of legal knowledge and the confidence and ability to talk effectively about different laws and how they apply to particular situations."**

**Caitlin Biggs**  
Former student of Darwen Vale High School and now studying for LLB (Hons) Law and Legislative Studies at the University of Hull.



## AQA A LEVEL LAW

**LAW IS RELEVANT TO EVERYONE: IT PROVIDES THE FRAMEWORK WITHIN WHICH SOCIETY OPERATES, REGULATING ALMOST ALL ASPECTS OF OUR LIVES.**

### WHY SHOULD I STUDY LAW?

Law is a good choice if you want to study an academically challenging subject and are curious about the rules by which society is organised. Studying law will also suit you if you have an interest in current affairs, as much of the news is about either the making or breaking of the law. Our experienced and specialist teachers will help you develop excellent analytical, problem-solving and critical thinking skills through the application of legal rules to real-life problems.

As well as gaining a detailed understanding of civil and criminal law, including non-fatal offences, murder and manslaughter, you will learn about the ethics underpinning laws. There are also opportunities to visit student conferences, Crown Court trials and the Houses of Parliament.

### WHAT CAN I STUDY IT WITH?

It combines well with all other Arts subjects especially History, Geography, English, Government & Politics and Business. It also provides breadth for science students.

### WHAT CAN I DO AFTERWARDS?

Many students go on to study law at university to become a solicitor or barrister or work in a role with an obvious link with law, such as the police or prison service. However, the skills you develop are transferable to a wide range of careers such as local government, social work, politics, the civil service and business administration.

### ENTRY REQUIREMENTS:

At least five GCSE Grades A\*-B or 9-6, including Grade B or a 6 in English Language and at least Grade C or a 5 in Maths. It is not necessary to have studied GCSE Law.

**"The Sixth Form supported me all the way to getting excellent grades. Thanks to DACA my future looks really bright."**

**Niamh Webster**  
Former student of Darwen Aldridge  
Community Academy and now  
studying History and English  
Literature at Aberystwyth University

## WJEC LEVEL 3 DIPLOMA CRIMINOLOGY

**DEVELOP A DETAILED UNDERSTANDING OF CRIME, CRIMINAL BEHAVIOUR AND THE ROLE OF THE CRIMINAL JUSTICE SYSTEM**

### WHY SHOULD I STUDY CRIMINOLOGY?

Why do people commit crime? Which groups are most likely to commit crime? What makes someone a serial killer? How should we treat offenders? How do the courts, probation service and police work? Can we predict where crime will happen? How reliable are investigative techniques? Criminology is an exciting and challenging subject which will help you to answer these and many other questions. You will be taught by our enthusiastic and experienced specialist teachers in a friendly and lively atmosphere.

They will help you to develop a critical understanding of the pros and cons of the UK criminal justice system as well as the causes and effects of crime and criminal behaviour. You will be stretched and challenged to fulfil your potential through a range of different learning activities such as classroom sessions, debates, guest speakers, student conferences and visits to university Criminology departments.

You will also be encouraged to develop your own point of view, take risks with ideas and challenge the views of others. You will be assessed through a combination of examinations and coursework.

### WHAT CAN I STUDY IT WITH?

It combines very well with Psychology, Law, Sociology, Health and Social Care, and Forensic Science.

### WHAT CAN I DO AFTERWARDS?

It will help you to prepare for a wide range of criminology and related degree courses, as well as a career in criminal justice, such as police officer, lawyer, probation worker, social worker and prison governor.

### ENTRY REQUIREMENTS:

At least five GCSE Grades A\*-C or 9-5, including English Language and Maths. However, Grade B or 6 in English Language is preferred.



## AQA A LEVEL GEOGRAPHY

**GEOGRAPHY ENABLES YOU TO INVESTIGATE PEOPLE, SPACES, PLACES AND THE ENVIRONMENT FROM A LOCAL TO A GLOBAL SCALE**

### WHY SHOULD I STUDY GEOGRAPHY?

Huge urban changes and population movements, globalisation, climate change, environmental damage, natural disasters and extreme weather mean there has never been a more interesting time to study Geography. If you're interested in the lives of people and the places where they live; the processes that shape and threaten their environment and the hazards that create risks for them, then Geography is the perfect subject for you! This A Level will support and enhance any combination of other subject choices and help you to develop a wide range of skills required by universities and employers such as high level reading and writing skills, accurately interpreting statistical information to identify patterns, designing research projects, teamwork and debating. As well as lively and interesting lessons with experienced and friendly staff, you will also visit case study locations to focus on different human and physical geography issues.

### WHAT CAN I STUDY IT WITH?

With its complementary science and arts elements it combines well with any other subject. However, it is particularly useful alongside Psychology, Sociology, Biology, Chemistry, Physics, Mathematics and Computing.

### WHAT CAN I DO AFTERWARDS?

It will provide you with an excellent foundation for a wide range of Geography

and related degree courses, such as Geology, Surveying, Urban & Regional Planning and Construction Management. Geography graduates have some of the highest rates of graduate employment and popular careers include: town or transport planning, surveying, conservation, sustainability, waste and water management, environmental planning, tourism, and weather forecasting. The army, police, law and business world also value the skills geographers develop.

### ENTRY REQUIREMENTS:

At least five GCSE Grades A\*-B or 6-9, including English Language and Grade C or 5 in Maths. It is not necessary to have studied GCSE Geography.

**"Geography is a brilliant subject to study and is taught really well in the Sixth Form. As well as this, the facilities for Sixth Formers are very good and the teachers are friendly and always willing to help."**

**Ella McLeod**  
A\* in Geography  
Former student of Darwen Aldridge Community Academy and now studying BSc Environmental Geoscience at Durham University



# AQA A LEVEL GOVERNMENT AND POLITICS

**DEEPEN YOUR KNOWLEDGE AND UNDERSTANDING OF ONE OF THE MOST POWERFUL FORCES OPERATING ON PEOPLE, COMMUNITIES AND CORPORATIONS TODAY**

## WHY SHOULD I STUDY GOVERNMENT AND POLITICS?

Are we really a democracy? Will Brexit be successful? Does your vote actually count? Will the UK break up? Will elected Mayors in some Northern cities improve democracy? If you have an interest in these and similar questions and enjoy discussing current domestic and international affairs then this is a good choice of subject for you. Studying the current government and politics of Britain is probably more exciting now than it's ever been. Widespread constitutional reforms have changed the political map. The establishment of the Parliament in Scotland and the Assemblies in Wales, Northern Ireland and London mean that power is shifting. In addition, the referendum decision to leave the EU means that debates over sovereignty and co-operation rage long and hard. If you're someone with a keen interest in current affairs then this subject will suit you very well. Lessons will be supplemented by guest speakers such as local politicians, visits to public lectures at local universities and the Houses of Parliament. You will also develop the ability to think, write and debate critically and use reliable evidence to support your point of view - skills highly valued by universities and employers.

## WHAT CAN I STUDY IT WITH?

As an academic A Level it complements most other subjects, but works particularly well with History, Law, Psychology, Sociology, Business, Criminology and English Literature or English Literature and Language.

## WHAT CAN I DO AFTERWARDS?

The subject is well regarded by universities and is excellent preparation for a degree or career in Politics, PPE, Law, History, International Relations and Journalism.

## ENTRY REQUIREMENTS:

At least five GCSE Grades A\*-B or 9-6, including English Language and at least Grade C or 5 in Maths.

**"The Sixth Form is brilliant and all the staff have motivated and encouraged me on my courses. The staff have given me the skills, confidence and determination to achieve."**

**Chloe Dickinson**  
Former student of Darwen Vale High School and now studying History & Politics at Lancaster University

# OCR A LEVEL HISTORY

**A CRITICAL STUDY OF THE PAST HELPS US TO BETTER UNDERSTAND THE MODERN WORLD AND OURSELVES**

## WHY SHOULD I STUDY HISTORY?

You may think you know what's currently going on in the world, but without History you won't completely understand why things are happening. The focus on European history from 1918-1989 and British history from 1790-1918 helps you gain a detailed understanding of the past which you can use to develop a much better understanding of the modern world in terms of its politics, culture, society and economics. It is also a very enjoyable subject taught by dedicated and experienced teachers in a lively and friendly environment where you will be stretched and challenged to fulfil your potential, develop your own point of view, take risks with ideas and back up your opinion with evidence in essays and class discussions. You will also have the opportunity to visit historical sites in Germany and Poland. History is a highly regarded academic subject and will give you the opportunity to acquire many of the key skills required by the best universities and employers.

## WHAT CAN I STUDY IT WITH?

As an academic subject it combines well with all other courses. However, it is particularly useful when studied alongside Geography, Government & Politics, Sociology, Philosophy and Ethics, Law, Psychology and English Literature or English Language and Literature.

## WHAT CAN I DO AFTERWARDS?

History provides an excellent foundation for a wide range of degree courses and related careers including History, Law, Archaeology, Education, Accounting and Finance, Banking, Journalism, International Relations and Politics.

## ENTRY REQUIREMENTS:

At least five GCSE Grades A\*-B or 9-6, including English Language and at least Grade C or 5 in Maths. It is not necessary to have studied GCSE History.



## OCR A LEVEL PHILOSOPHY AND ETHICS

**LEARN TO BE ABLE TO THINK FOR YOURSELF ABOUT THE BIG QUESTIONS IN LIFE**

### WHY SHOULD I STUDY PHILOSOPHY AND ETHICS?

What is the meaning of life, death, good, evil and free will? What are the ideas of Plato, Aristotle, Hume and Kant? What are the arguments for and against issues such as euthanasia, genetic engineering and war? If you're interested in what people believe and what makes them act like they do, then this interesting and challenging course is a good choice for you.

Through lively classroom lessons and discussions our experienced and friendly staff will help you to be able to think for yourself by getting to grips with the big questions in life through studying different philosophical, theological and ethical theories as well as learning how to critically evaluate them and develop structured and robust arguments. An understanding of these ideas is also essential to an informed engagement

with key themes in politics, law, medicine, education, human rights and religion.

### WHAT CAN I STUDY IT WITH?

As an academic A Level it complements most other subjects and works particularly well with Law, Politics, History, Government & Politics, Sociology and English Literature or English Literature and Language.

### WHAT CAN I DO AFTERWARDS?

The subject is well regarded by universities and is excellent preparation for degrees in Philosophy, Law, History, Theology, Religious Studies, PPE and Sociology.

### ENTRY REQUIREMENTS:

At least five GCSE Grades A\*-B or 9-6, including English Language and at least Grade C or 5 in Maths. It is not necessary to have studied GCSE Religious Studies.



## AQA A LEVEL PSYCHOLOGY

**PSYCHOLOGY IS A FASCINATING SCIENCE CONCERNED WITH THE STUDY OF THE HUMAN MIND AND BEHAVIOUR**

### WHY SHOULD I STUDY PSYCHOLOGY?

Is there a relationship between psychological disorders and brain biochemistry? Why do people dream? Can one person possess two or more distinct personalities at the same time? How do people learn? To what extent are you prepared to accept authority? Why do some people become criminals while others do not break the law? If these and other questions about human behaviour interest you, then Psychology is a great subject for you. It will help you understand the reasons and motivations behind a variety of behaviours.

This stimulating subject combines fascinating theories with a rigorous consideration of academic research evidence. You will also develop important skills in how to design, carry out and analyse primary research. Guest speakers, visits to student conferences and university Psychology departments along with stretching and challenging activities in lessons ensure you reach your potential in this subject. Due to aspects of the course content we prefer you to have at least Grade B or 6 in GCSE Mathematics. If you have a Grade C or 5 you will need to complete a Maths Enhancement for Psychologists course during the autumn term of Year 12.

### WHAT CAN I STUDY IT WITH?

As an A Level it combines well with most other subjects. However, it best complements Mathematics, Biology, Medical Science, Applied Science, Sociology, Criminology, Law, Health and Social Care, Sport and PE.

### WHAT CAN I DO AFTERWARDS?

It provides an excellent foundation for a range of degrees such as Psychology, Forensic Psychology, Sport Psychology, Education, Nursing, Social Work, Criminology, Counselling, Law and Marketing.

### ENTRY REQUIREMENTS:

At least five GCSE Grades A\*-B or 9-6, including English Language and at least Grade C or 5 in Maths (although a Grade B is preferred). It is not necessary to have studied GCSE Psychology.

**"I'm so glad I chose to join the Sixth Form at DACA. I don't think I would have got as much help and had as many opportunities elsewhere. I'm really enjoyed it and I sure you will too."**

**Maddison Cordell**  
Former student of Darwen Vale High School and now studying Psychology at Lancaster University

# AQA A LEVEL SOCIOLOGY

## SOCIOLOGY IS THE STUDY OF HOW SOCIETY IS ORGANISED AND WHY PEOPLE BEHAVE THE WAY THEY DO

### WHY SHOULD I STUDY SOCIOLOGY?

Do you wonder what fuels our apparently endless fixation with celebrity? Is it just gossip in a modern form? Is it that it provides easily obtained content for our multiplying TV channels, newspapers and magazines? Could it be both? Or is it something much more profound about the class system of modern Britain? You may be thinking 'But class doesn't mean anything any more'. Are you sure? Why is your expected lifespan still associated with your occupation?

What about the way your gender, religion and ethnic background affects your life opportunities? How far do the media affect how personal lifestyle choices are viewed by wider society? What impact does poverty, crime and religious or political extremism have?

If you are interested in exploring and debating issues like these, with our experienced and friendly teachers, then Sociology is a good choice for you. As well as excellent research and critical thinking skills, you will develop the ability to construct strong arguments. You will also have the opportunity to listen to guest speakers, visit conferences and public lectures as well as undertake stretching and challenging activities in lessons.

### WHAT CAN I STUDY IT WITH?

As an academic A Level, it combines well with most other subjects. However, it particularly complements Psychology, Criminology, Law, Health and Social Care, Politics and Philosophy and Ethics.

### WHAT CAN I DO AFTERWARDS?

It prepares you very well for a range of degree courses and related careers including Sociology, Social Work, Law, Criminology, Media, Geography and Policing.

### ENTRY REQUIREMENTS:

At least five GCSE Grades A\*-B or 9-6, including English Language and at least Grade C or 5 in Maths. It is not necessary to have studied GCSE Sociology.



# BTEC LEVEL 3 TRAVEL AND TOURISM

## EXTENDED CERTIFICATE, FOUNDATION DIPLOMA OR DIPLOMA

### WHY SHOULD I STUDY TRAVEL AND TOURISM?

As people's income and leisure time increases and the ease of travel improves, the travel and tourism industry is forecast to become the world's largest industry in the 21st Century. Consequently, it will need employees with the necessary knowledge, understanding and skills to ensure the smooth running of travel and tourism operations and meet the needs of all customer groups.

During the course you will develop the knowledge and skills to be able to progress into a successful career with a travel company, heritage or tourism organisation, airport, airline or hotel group. Among other topics, you will explore different destinations, how to market them, how to deliver quality customer service and the factors which influence a visitor's choice of destinations and attractions. An essential aspect of the course is the annual visit to London to investigate visitor attractions such as the London Eye, historical monuments, museums and the theatre area.

### WHAT CAN I STUDY IT WITH?

The course combines particularly well with Geography, Business, History and IT. However, as long as you're qualified you can combine it with any other subject.

### WHAT CAN I DO AFTERWARDS?

Many students progress onto related degree courses such as Travel and Tourism Management, Events Management, Heritage and Tourism and Airport Operations Management. Students have also progressed onto advanced apprenticeships with Thomas Cook and different hotel groups.

### ENTRY REQUIREMENTS:

At least five GCSE Grades A\*-C or 9-5, including English Language and Maths.

**"I loved studying Travel and Tourism. Lessons were always interesting and well taught and the teachers were really helpful and ensured I got my Distinction\*. Studying the subject has had a big influence on my choice of university course."**

**Hayley Brown**  
Former student of Darwen Vale High School and now studying Events Management at the University of Chester



# MODERN FOREIGN LANGUAGES

**SPEAK ANOTHER LANGUAGE FLUENTLY AS WELL AS DEVELOP AN INDEPTH KNOWLEDGE OF ANOTHER CULTURE AND SOCIETY**

**A LEVEL FRENCH  
A LEVEL SPANISH  
A LEVEL GERMAN**

## **WHY SHOULD I STUDY FRENCH/ SPANISH/GERMAN?**

We aim to enable you to develop your language skills in order that you may learn to communicate confidently in your chosen language(s) whilst gaining an insight into the contemporary life of the relevant country/countries.

Study is based on topics of contemporary interest in French, German and Spanish speaking societies. At AS Level, this includes Leisure and Lifestyles (health and fitness, sport, hobbies and entertainment), the Individual and Society (youth culture, responsibilities, future careers and gender issues) and the World Around Us (including travel and tourism). At A2, social, political and environmental issues are examined, as well as the study of books, films or regions pertinent to the countries where the languages are spoken. Within each area you will develop your skills in listening, speaking, reading and writing using authentic and up-to-date materials from on-line newspapers, magazines, radio and TV. There is a strong emphasis on grammar as well as developing your confidence and accuracy with speaking and listening. Lessons are conducted mainly in your chosen foreign language(s).

## **WHAT CAN I STUDY IT WITH?**

As rigorous academic A Levels, whether you choose to study one or more of Spanish, German or French, they all combine very well with all other subjects.

## **WHAT CAN I DO AFTERWARDS?**

At university, a foreign language can be studied by itself or in combination with just about any other subject, including sciences. Most universities also offer you the opportunity to study or work abroad for a year. Languages graduates are always in high demand by employers. If you prefer an advanced apprenticeship after Sixth Form there are good opportunities for employees with language skills in the manufacturing, marketing and sales sectors.

## **ENTRY REQUIREMENTS:**

At least five GCSE Grades A\*-B or 9-6, including English Language and French/Spanish/German and at least Grade C or 5 in Maths.



# THE ALDRIDGE FAMILY

The Sixth Form is part of the Aldridge Foundation, a charitable organisation established by Sir Rod Aldridge, OBE to harness entrepreneurship as a catalyst for social change, help young people fulfil their potential and improve their communities. We are unafraid to challenge conventional thinking and a culture of low expectations and believe there are no limits to what people can achieve. We seek to develop every student's passion, creativity, determination, and ability to solve problems, take risks and work in a team.



[www.aldridgefoundation.com](http://www.aldridgefoundation.com)

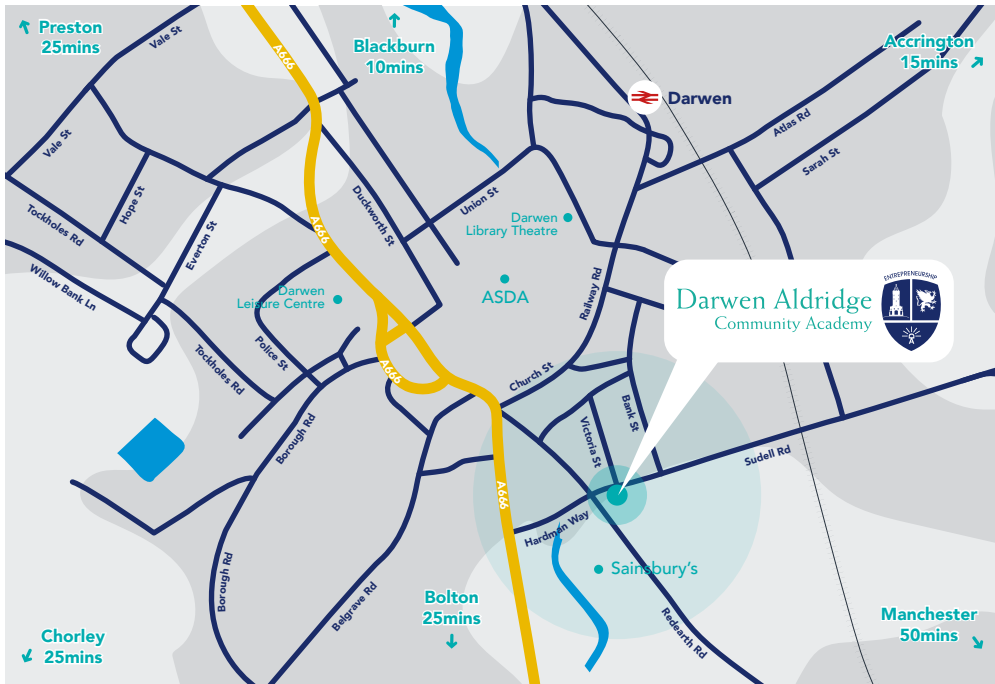
## The other members of the Aldridge family are:

- Darwen Vale High School
- Darwen Aldridge Enterprise Studio School
- UTC@MediaCityUK
- Sudell Primary School
- Kensington Aldridge Academy
- Aldridge Centre for Entrepreneurship
- National College for Digital Skills
- Brighton Aldridge Community Academy
- Portslade Aldridge Community Academy
- Aldridge Cricket Academy
- UTC@harbourside
- Isle of Portland Aldridge Community Academy

## Our shared vision for every Aldridge student is for him or her to be:

- Exceptionally successful
- Capable, independent and entrepreneurial
- Proud
- Praised
- Respectful
- Safe and happy
- Well-equipped
- Well-advised
- Responsible
- Healthy

# YOU'RE INVITED



Darwen Aldridge Community Academy  
Sudell Road Darwen Lancashire BB3 3HD

t: 01254 819500  
[www.daca.uk.com](http://www.daca.uk.com)

Follow us @DACASixthform

We are situated in the heart of Darwen town centre with excellent road, bus and train links.



The bus station is a **1 minute walk** and has frequent bus services throughout the region.



The rail station is a **five minutes walk** and has frequent connections to Blackburn, Preston, Burnley, Bolton and Manchester.



There is access at the campus and **plenty of spaces** to secure a bicycle.

## OPEN EVENTS

For Year 11 students and their parents/carers to gain an insight into the courses, enrichment opportunities and the individualised support for students available in the Sixth Form.

Students will be expected to be accompanied by a parent or carer.

## OPEN EVENING

**Thursday 27th October 2016**  
5.00pm - 8.00pm

## INFORMATION MORNINGS

**Saturday 21st January 2017**  
9.00am - 12.00pm

**Saturday 18th March 2017**  
9.00am - 12.00pm

**APPLY NOW FOR SEPTEMBER 2017 - APPLICATIONS OPEN MONDAY 12TH SEPTEMBER 2016**

Darwen Aldridge  
Community Academy

