



King's
WORCESTER



Details of the post of

TEACHER OF PHYSICS (PART-TIME)

at The King's School, Worcester

The King's School, Worcester: the character of the school and some recent achievements



The senior school

King's is an academically selective co-educational school, with two junior schools as part of its Foundation. There are 910 pupils in the senior school, which is situated next to Worcester Cathedral and the River Severn on a peaceful and attractive site in the centre of Worcester. At 11+ we take in six forms of between 20 and 22. Up to 12 pupils join the school at 13+ and around 30 at 16+. For some years, more have joined at 16+ than have left after GCSE.

Our two junior schools

King's St Alban's is adjacent to the main site and has 200+ boys and girls from 4 to 11. It shares many of the facilities of the senior school.

King's Hawford is just north of Worcester in spacious grounds and currently has about 320 children from Kindergarten up to Year 6. The school was acquired by King's in 1996, at which time it was a free-standing preparatory school. King's Hawford has two forms from Years 3 to 6 as well as thriving infant and junior sections. There have been major improvements to the site in recent years. Most recently, in 2016 a new multi-purpose sports Hall, the Bartholomew Barn was opened. The restoration of the Droitwich Canal, which runs by the school, has opened up some excellent new opportunities for water-based activities at King's Hawford.



The great majority of Year 6 children from both junior schools (80 to 90 each year) proceed to the senior school by means of an 11+ entrance exam. They are joined in Year 7 by between 40 and 50 children from local primary schools or other independent junior or prep schools. Each of the junior schools has its own Head, who is responsible to the Headmaster of the senior school.

Some history, ancient and modern

The oldest building at King's is College Hall, once the twelfth century monks' refectory, subsequently the School Room and now the Assembly Hall. It stands for an enduring relationship with the Cathedral and the Dean and Chapter, from whom we rent it and other buildings around the Green. It recalls the re-founding of the school by Henry VIII in 1541 when the monastery was closed and there began the grammar school tradition that has been an important part of the school's character, particularly in the last hundred years or so, when the fortunes and size of the school have steadily increased. Two important decisions in the 1990s have had an important part in shaping the school into its present form. In 1991, girls were admitted to King's St Alban's and at 11+ in the senior school (following 20 years of admission of girls to the Sixth Form). Girls now make up just under 50% of the numbers in all three schools. In 1999, boarding came to an end. This opened up considerable opportunities to develop some of the school's finest buildings and offer proper departmental areas to all subjects.



Development of the school site

A development programme costing in the region of £30 million over the last 15 years has produced a new administrative centre, a centre for English and Classics with a large ICT room, a new base for Mathematics, with three PE rooms, a new Music School, a new Library and careers centre, a new Art School, an expanded and refurbished Design and Technology department, the refitting of all 13 science laboratories, a modern languages computer centre, a new reception area and major improvements to our 300 seat John Moore Theatre. We have greatly improved our playground provision for all ages. A substantial gift from a former pupil covered the entire cost of an eye-catching new Boathouse on site with accompanying social and changing facilities. The purchase of a second (larger) pub on the perimeter of the senior school site has enabled us to build a Sports and Performing Arts Centre with a new sports hall and gym, dance and drama studios, an indoor climbing wall, additional classrooms and a Sixth Form Centre. This was officially opened in June 2015. Other facilities on the main site include a sports hall and indoor swimming pool. The school has extensive playing fields across the river within walking distance, and an all-weather pitch shared with a local state school.



Academic provision and success

The school has had considerable (and growing) academic success in recent years. In summer 2017, 74% of grades at A level were A*, A or B (with 46% at A* or A grade). At GCSE, 70% of grades were A* or A. These results mean that we maintain our record for some years as being the top school in Worcester at A Level and in the county as a whole at GCSE. 23 different subjects are offered at A level.

In Year 7, French, German and Spanish taster courses lead to a free choice of language in the second term. We run language exchanges and work experience programmes in France, Spain and Germany and have developed special links with the Cathedral School in Magdeburg. All pupils take up a second language in Year 8 which many take on to GCSE as part of an option system that includes 10 subjects. Pupils choose three of these options in addition to the core curriculum.

Most pupils take three separate sciences at GCSE. We currently enter all pupils for IGCSE courses in Maths, English and modern languages and the majority for IGCSE in the sciences.

The Extended Project Qualification is taken by many of our Sixth Form students. All Lower Sixth students take part in our own 'King's Certificate for Skills and All-Round Achievement' which we have devised jointly with the University of Worcester and the local Chamber of Commerce.

The pastoral system

The pastoral system in the senior school is a particular strength, based on forms (with a Pastoral Head) in Years 7 and 8 and a house system from Years 9 to 13. There are nine parallel houses with about 75 pupils and six staff in each. Each year group within a house has its own tutor but strong emphasis is also placed on the vertical grouping and the mixing of ages within a house. There is a well established programme of inter-form and inter-house competitions. The high quality of our pastoral care was noted in the last inspection as was the strong moral code amongst the pupils.

Sport, outdoor activities and trips

King's has a proud tradition of breadth in extra-curricular activities. Sport is very strong among both boys and girls. Our Rugby 1st XV is regularly among the best in the region and, as in all sports, we have experienced coaches for all ages. Our rowers, boys and girls, have, over recent years, won many medals in local, regional and national events, and a number have been chosen to row for their country. Pupils from King's have been selected to represent their country in recent times in Rowing, Cricket, Hockey, Netball, Kayaking and Polocrosse. One former King's pupil played senior international Rugby for England and another won an Olympic Rowing gold medal in Beijing and a silver medal in the London Olympics. Our senior Netball team reached the National Finals in 2010, 2012 (2nd in the country) and 2013. Hockey teams have reached the Regional Finals at U12,U13,U14,U16 and U18 consistently over the past 4 years. Other sports include Athletics, Tennis, Rounders, Basketball, Swimming, Sailing, Kayaking, Sub Aqua, Judo, Cross-Country Running, Climbing and Fencing. We have our own Astroturf pitch on the site of a partner school in Worcester.

Outdoor activities are very popular and often based at our Outdoor Activities Centre in the Black Mountains which all pupils visit in Years 5, 6 and 9. Duke of Edinburgh Award and Army and RAF contingents of the CCF are voluntary but well subscribed. Our CCF regularly wins national awards; both boys and girls are currently national champions. A 'Himalayan Club' sends a party of between 20 and 30 Lower Sixth students trekking and carrying out community work in different parts of the world each year. Many of our pupils have been on joint trips in recent years to Morocco or Iceland with members of a local school for blind or visually impaired pupils. There is a large indoor climbing wall in the school.

There is a very large number of trips open to pupils across the whole age range each year. A Classics trip to Italy, History trip to France, Rugby tour to South Africa, Netball and Hockey tour to Barbados, Cricket tour to the Caribbean and Religious Studies trip to the Holy Land are just a few recent highlights. We also make sure that there are many value-for-money trips within this country each year across a wide range of subjects and activities.

The creative and performing arts

The creative and performing arts are exceptionally strong. Large numbers of pupils study Art at GCSE and A level and achieve outstanding results. Music is an historic strength, particularly in the areas of orchestra and choir. We have a distinguished record of producing music scholars at Oxford and Cambridge and players for the National Youth Orchestra. The Cathedral (boy) choristers are all pupils at King's and half of the girl choristers are educated here. There are several drama productions each year ('Les Miserables', 'Romeo and Juliet', 'The Sound of Music', 'High School Musical',





'The Silver Sword', 'Animal Farm', 'The Happiest Days of your Life' being recent triumphs with 'A Streetcar named Desire' and more than 80 pupils choose to have speech and drama lessons. Dance is popular with girls at all ages. Large numbers of pupils achieve bronze and silver levels of the national Arts Award programme. These, and many other themed arts events, are some of the many opportunities each year to bring experts and professionals (in these areas and many others) into the school.

Other extra-curricular strengths

These include Young Enterprise, taken up by over 50 pupils in the Lower Sixth



each year (we have had the 'Best Company' in the region on many occasions), Debating, Public Speaking and General Knowledge. Our 'Maths Challenge' team has reached the national finals in five of the last seven years. We enter three 'Model United Nations' competitions each year. There are many clubs and other activities. Community service is a strong feature of life at King's. A number of our pupils volunteer to read with local primary school children or to assist as 'study buddies' at the local school for blind and visually impaired children. We have a close and interesting partnership with a local maintained secondary school which includes joint activities in a range of curricular and extra-curricular areas. We put on a large number of events each year for children in local primary schools.

Charitable work

There is a Sixth Form Charity committee which oversees and plans a good variety of fundraising (and awareness-raising) events each year. In 2015 a charity walk by the whole school raised £15,000. Two interesting annual events are a summer garden party for all the children and staff at a local special school and a Christmas show and entertainment for residents of sheltered housing in Worcester. A number of houses and forms have chosen their own particular charities to support throughout the year. Two local hospices and a trust for bereaved families have been a particular focus of our attention.



Alumni and Development

King's has had a Foundation Development Office (FDO) for 16 years. It works with our Development Trust in engaging the community to support the strategic vision for the development of the school. Key focus areas for the Trust are social mobility through the provision of means-tested bursaries; investment in high quality new buildings and the renovation of the existing historic buildings. Over £6.5 million has been raised in that time. An 'Enduring Bursary Fund' of £1.8 million has been established and the Trust currently supports 13 full fee bursaries a year.

It has also provided full funding for the development of the Michael Baker Boathouse and a significant contribution towards the cost of the Keyes Building, the school's Sports and Performing Arts Centre. The FDO is also responsible for building and developing a network of former pupils ('Old Vigornians') and friends of the school through regular communications, helping them to keep in touch with each other and with the school. A large number of different social events are held each year for this purpose. The FDO also encourages many OVs to return to King's to offer their advice and expertise to current pupils at various events, including assemblies, pupil talks, conferences and other school occasions organised in conjunction with the Careers Department.



Our Christian tradition

The school maintains its Christian tradition through assemblies (many of which are in the Cathedral), the teaching of Religion and Philosophy, a Christian Union, a 'Questions' group and a weekly Eucharist in the Cathedral crypt for pupils, staff and parents. There are regular prayer meetings for interested parents.

The Physics Department at King's

Staff

There are currently four full-time and one part-time member of staff in the Physics department. We thoroughly enjoy teaching Physics and this enthusiasm is conveyed to our pupils. All staff are involved in the pastoral and extra-curricular life of the school, contributing to areas such as The Duke of Edinburgh Award Scheme, running scientific clubs or societies or coaching sports, but it is appreciated that the primary role of the successful applicant will be teaching Physics.

Facilities

In Physics, there are four teaching laboratories. Technical support is excellent, with two part-time, highly experienced Physics technicians.

Curriculum

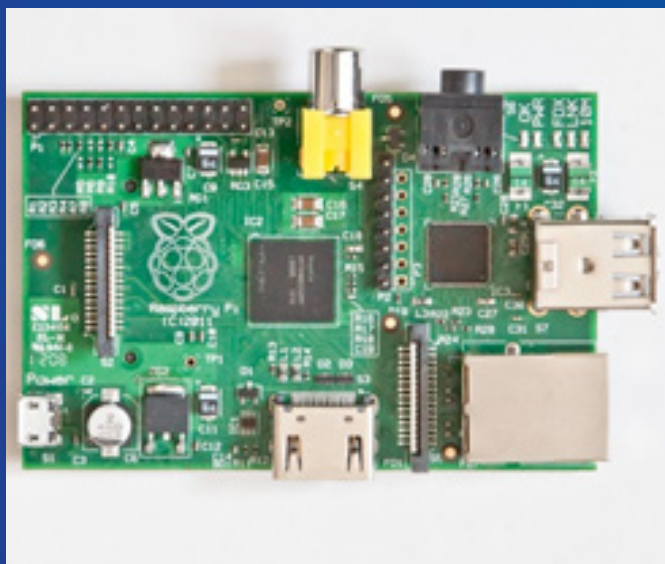
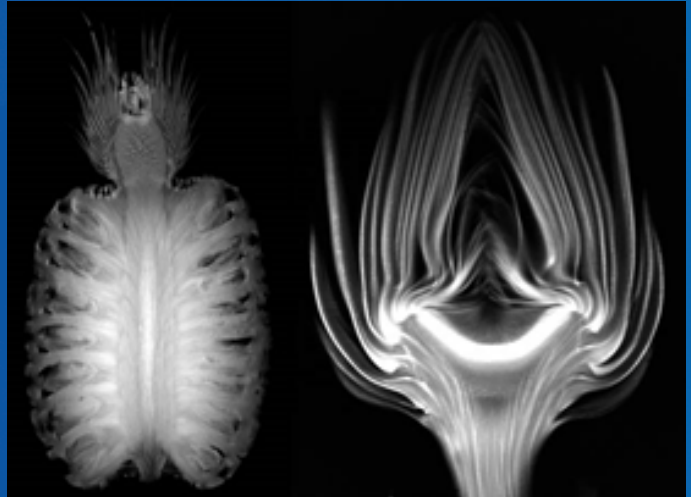
Year 7 and 8 pupils have a double lesson (2 x 35 min) of Physics each week. Year 9, 10 and 11 students have three, 35-minute lessons per week. In the Sixth Form, students studying A-level have eight lessons per week in the Lower Sixth and eight in the Upper Sixth. All A-level teaching is arranged so that classes are shared by two teachers.

There are normally seven or eight sets in Years 9, 10 and 11, which follow the Edexcel iGCSE specification.

The top four sets are usually entered for separate science iGCSEs in Biology, Chemistry and Physics while the remaining set takes Edexcel iGCSE Dual Award Science.

This summer, 71% of the iGCSE Physicists scored either an A* or A grade. Set sizes are around 24 pupils. We are teaching the linear AQA A level course. Physics has long been a popular choice at A level, and we generally have around 30 students in Year 12 and 25 in Year 13, with two or three sets in each year.

Last summer, 72% of Physics A level grades were A*-B. In addition, there is a strong track record of Oxbridge places for Physics and Engineering.



Teacher of Physics (part-time)

We require a well-qualified and enthusiastic graduate to teach Physics throughout the Senior School from September 2018. The successful candidate will be passionate about the subject and also willing to contribute to the wider life of a busy day school.

The Post

The successful applicant will teach throughout the age and ability range. An enthusiasm for the subject and the ability and energy to communicate it effectively are essential. This is an exciting opportunity to join a successful, thriving and friendly department, which would suit an experienced teacher looking for a new challenge or an NQT, (for NQTs induction is provided). The salary will be in accordance with the King's salary scale.

Applicants seeking further details of the post are welcome to contact the Head of Physics, David Haddock, by emailing dhaddock@ksw.org.uk or calling 01905 721734

The ability to offer some extra-curricular activity would be an added advantage and it is expected that all members of staff have pastoral responsibilities too.



How to apply

Please complete an Application Form (Teaching Staff) available on the 'Vacancies' page of the school website, and return it, with a covering letter detailing your relevant experience, how you would intend to meet the challenges of the role and the particular qualities and strengths which you would hope to bring to the post, to: The Headmaster, The King's School, 5 College Green, Worcester WR1 2LL or email the Headmaster's Secretary Alison Stanley astanley@ksw.org.uk. There is no requirement to include a CV, although you are free to do so in addition to the Application Form if you think it would be helpful to us in assessing your achievements and experience.

The school is required to ensure that the successful candidate is checked by the Disclosure and Barring Service. Details of the school's policies on safeguarding and promoting the welfare of children as well as equal opportunities are available on request. References will be taken up before the appointment is confirmed.

Closing date for applications: Tuesday 21 November 2017

Interview date: Thursday 30 November and Friday 1 December 2017

Getting to King's

Worcester is well-connected to the national road network, with easy access from J6 (Worcester North) and J7 (Worcester South) of the M5 motorway, which in turn is connected to the M6 (Birmingham and North of England), M50 (Hereford and South Wales) and M42 (West Midlands and Warwickshire).

Vehicle access to King's is via Edgar Street to either Castle Place (main entrance) or Severn Street. Public parking is available on King Street.

For sat-nav/GPS location: **WR1 2NB**.

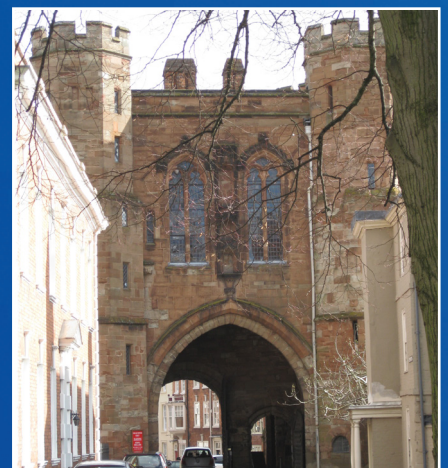
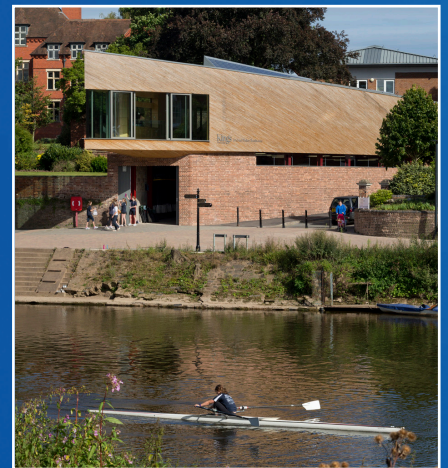
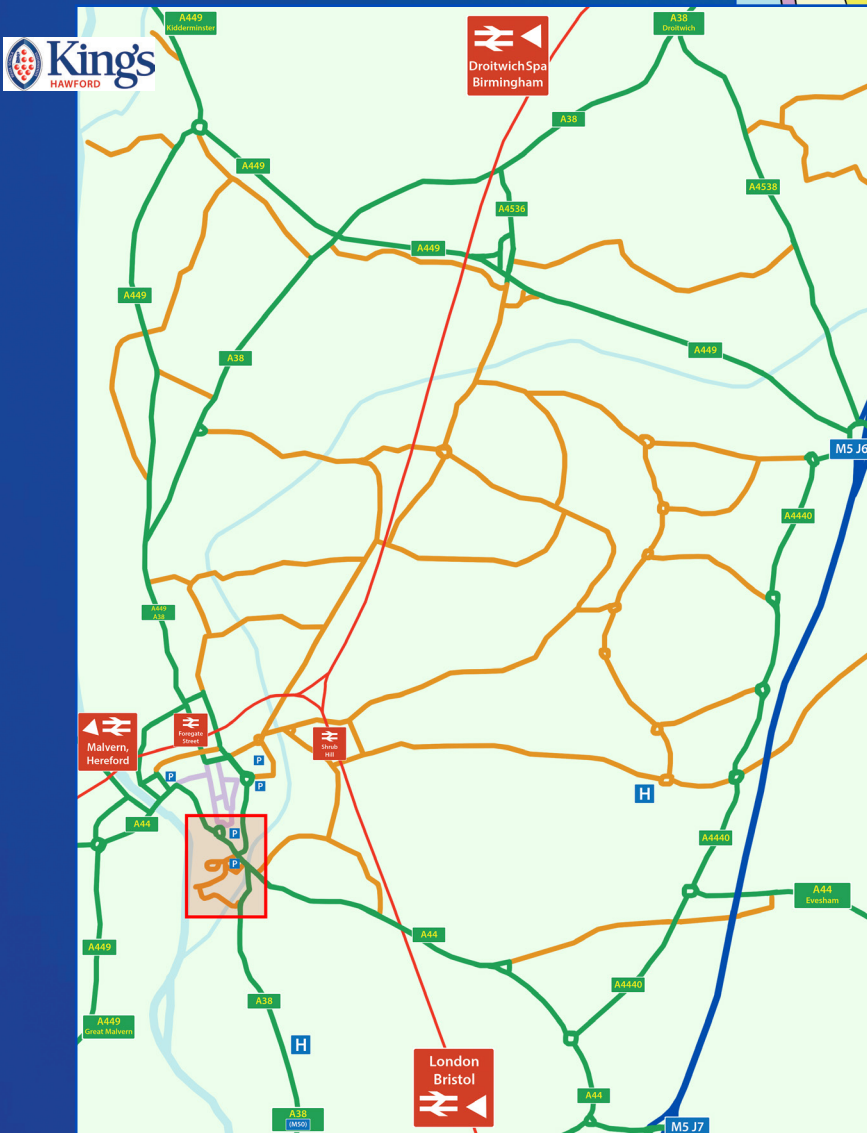
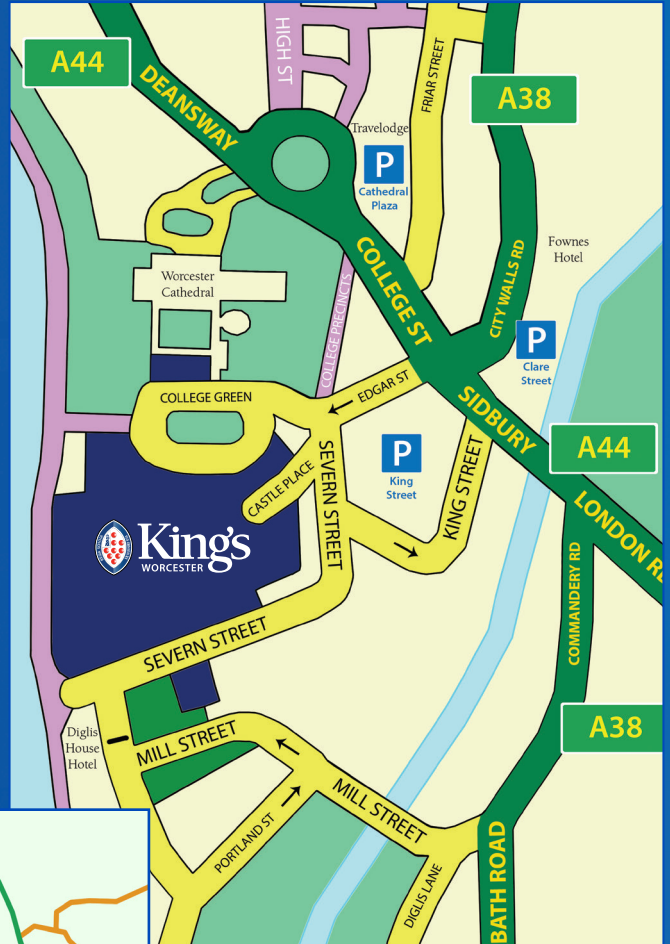
King's St Alban's is accessed from Mill Street (off A44 Commandery Road).

For sat-nav/GPS location: **WR1 2NJ**.

Both King's and King's St Alban's are easily reached by train; Worcester is served by two railway stations - **Worcester Foregate Street** (trains from Hereford via the Honeybourne line to London Paddington) and **Worcester Shrub Hill** (trains from Birmingham through to Gloucester and Bristol) - both of which are a 10 - 15 minute walk (or a short taxi ride) from King's.

King's Hawford is located on Lock Lane, accessed from the A449 northbound towards Kidderminster.

For sat-nav/GPS location: **WR3 7SE**.





King's
WORCESTER

www.ksw.org.uk

© 2017 The King's School, Worcester

The King's School, Worcester: a company limited by guarantee.

Registered Office: 5 College Green, Worcester WR1 2LL.

Registered in England: Company Number 4776324

Registered Charity Number: 1098236.

 King's Worcester

 @KingsWorcester