

# STANLEY PARK HIGH

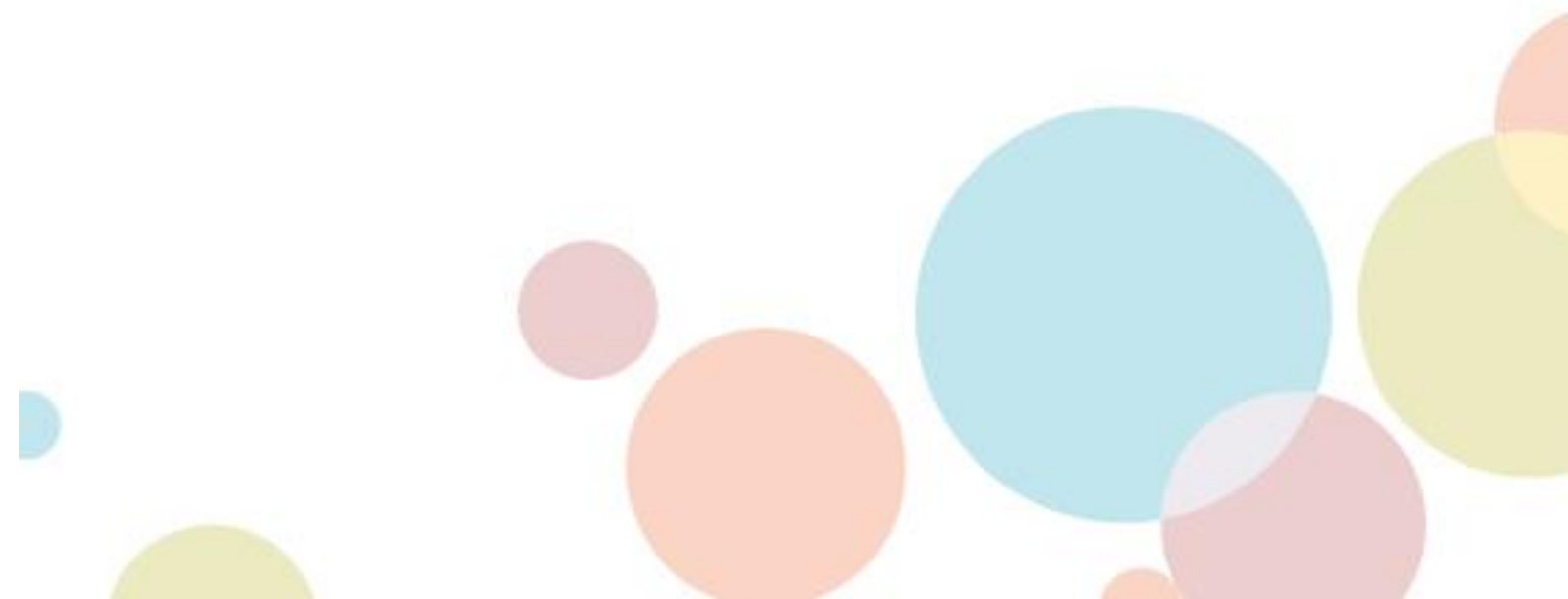


## TEACHER OF GEOGRAPHY Recruitment Information Pack



# CONTENTS

Letter from Headteacher	2
Vision	3
Application Process	4
Vacancy Advert	5
Job Description	6
Person Specification	7



Dear Candidate

Thank you very much for your enquiry regarding the position of **Teacher of Geography** at Stanley Park High. This key position has recently become available and the Governing Body, together with the students, parents and staff, are seeking a talented individual who has the qualities to '*Ignite a Passion for Learning*'.

**Stanley Park High** is a successful, mixed school for students aged 11 to 19, which is truly comprehensive by nature. Our goal is to help young people develop the skills, knowledge and qualifications they need to become adults we can be proud of in the future.

We are a **unique** school, and we continue to be innovative in our approach to education. Through the provision of a nationally recognised, award-winning curriculum, high quality learning and teaching and a range of opportunities beyond the classroom, we believe our students can achieve their true potential.

At Stanley Park High, **relationships** are at the heart of what we do. Our small schools approach allows all students to develop excellent relationships with staff and fellow students, and we believe this is critical to aid learning and success in the future.

We have an **exceptional** team of dedicated staff who are fully committed to our students' wellbeing, achievement, attainment and progress in all areas. In addition to this, our outstanding facilities create an inspirational learning environment in which all students thrive.

We very much look forward to receiving your application.

Yours sincerely,

A handwritten signature in black ink, appearing to read 'Amit Amin', written over a horizontal line.

**Mr Amit Amin**  
**Acting Headteacher**

# VISION

## **Igniting a Passion for Learning**

Every member of Stanley Park High will have:

- Ambition, commitment, resilience and perseverance
- Confidence to take risks
- An ability to organise and present themselves effectively
- Intellectual curiosity
- Imagination and creativity
- Initiative and self-motivation to learn independently and with others
- Optimism for a future in a rapidly changing world



# APPLICATION PROCESS

We hope that this application pack and our website [www.stanleyparkhigh.org.uk](http://www.stanleyparkhigh.org.uk) 'Ignites a Passion' sufficiently in you that you feel it important to apply for this post.

Please visit our website for an application form. Please ensure that you respond fully to the Person Specification and that your Personal Statement does not exceed two sides of A4 Arial Size 10. Our preferred method of application is by email to [recruitment@stanleyparkhigh.org.uk](mailto:recruitment@stanleyparkhigh.org.uk)

If you have not heard from us within 2 weeks of the closing date, please assume your application has been unsuccessful.

If you have any questions regarding any aspect of the application process or need additional information please contact Miss Horrigan on [recruitment@stanleyparkhigh.org.uk](mailto:recruitment@stanleyparkhigh.org.uk)

**Closing date for receipt of applications: Midday, Thursday, 2 May 2019**  
**Interviews to be held end week commencing: 6 May 2019**



# TEACHER OF GEOGRAPHY

Required for September 2019

**Main/Upper Pay Range (Outer London Area)**  
**TLR available for suitably experienced candidate**

Stanley Park High is a successful, mixed school for students aged 11 to 19, which is truly comprehensive by nature. Our goal is to help young people develop the skills, knowledge and qualifications they need to become adults we can be proud of in the future.

We are a unique school and we continue to be innovative in our approach to education. Through the provision of a nationally recognised, award-winning curriculum, high quality learning and teaching and a range of opportunities beyond the classroom, we believe our students can achieve their true potential.

At Stanley Park High, relationships are at the heart of what we do. Our small schools approach allows all students to develop excellent relationships with staff and fellow students, and we believe this is critical to aid learning and success in the future.

We have an exceptional team of dedicated staff who are fully committed to our students' wellbeing, achievement, attainment and progress in all areas. In addition to this, our outstanding facilities create an inspirational learning environment in which all students thrive.

We are seeking an enthusiastic and conscientious Teacher of Geography to join our successful and supportive team. You will be required to teach throughout the age and ability range to KS4. Experience of teaching to KS5 is desirable but not essential.

This post is an excellent opportunity for either an NQT or experienced teacher

The successful candidate will:

- Ignite a Passion for Learning in all our students
- Be creative and dynamic in the classroom at all key stages
- Have the skills to form excellent working relationships with all individuals

Our preferred method of application is by email to [recruitment@stanleyparkhigh.org.uk](mailto:recruitment@stanleyparkhigh.org.uk)

***Stanley Park High is committed to safeguarding and promoting the welfare of our students and expects all staff and volunteers to share this commitment. This post is subject to satisfactory references, medical clearance and enhanced checks carried out by the Disclosure and Barring Service.***



# JOB DESCRIPTION

**Job title:** Teacher of Geography  
**Scale:** Common Pay Spine  
**Responsible to:** Programme Leader of World School

You are required to carry out the duties of a school teacher in accordance with the provisions of the School Teachers' Pay and Conditions Document.

## 1. General Purpose of the Post

The Teacher will support the Programme Leader of World School to:

- contribute to the vision and leadership of school in order to ensure continued progress ;
- be accountable for continuous improvement in the quality of education within the classes taught;
- support the ethos of this school;
- satisfy the aims of the school through the implementation of the policies of the governing body;
- develop high quality learning and teaching within the subject that promotes and secures the achievement of students;
- carry out any such reasonable duties as may be specified by the Headteacher including the role of Form Tutor.

## 2. Learning and Teaching

The Teacher will support the Programme Leader of World School to;

- deliver lessons according to the Stanley Park Outstanding Lesson guide;
- provide a broad, balanced and relevant curriculum within the subject that matches the differing needs of all students;
- interpret different forms of data in order to develop appropriate intervention strategies;
- plan for, assess, record and report students' progress in relation to the classes taught;
- promote and recognise all forms of student achievement;

## 3. Human, Financial and Physical Resources

### Human

The Teacher will support the Programme Leader of World School to:

- promote a positive ethos and a safe environment in which the highest achievements are expected from all members of the school community
- promote good order, discipline and high morale throughout their classes and the school community
- create and maintain good working relationships among all members of the school community.

### Financial

The Teacher will support the Programme Leader of World School to:

- identify areas of potential spend within department allocations.

### Physical

The Teacher will support the Programme Leader of World School to:

- ensure that resources for the lessons are fit for purpose and fully support effective learning.

## 4. Equal Opportunities

The Teacher will, at all times, carry out the duties and responsibilities of the post with due regard to the school's equal opportunities policies.

*This job description sets out the duties of the post at the time it was drawn up. The post holder may be required from time to time to undertake other duties within the school as may be reasonably expected, without changing the general character of the duties or the level of responsibility entailed.*



# PERSON SPECIFICATION

Please state, on the application form, in numerical order, how you meet the following selection criteria. Candidates will be shortlisted entirely on the basis of the extent to which they meet the criteria in their application form. Please ensure that you address every aspect, in turn, and number them under each heading. **All elements are essential unless otherwise stated.** Where 'desirable' is stated, only comment if you have the appropriate skills or experience. **Please ensure that your supporting statement is no more than two pages of typed A4.**

	Method of Assessment
<b>Qualifications and Experience</b>	
1. Qualified Teacher of <b>Geography</b>	I/A/C
2. Evidence of the potential to be an outstanding practitioner	I/A
3. Evidence of raising achievement for all groups of students	I/A
4. Evidence of experience as a Form Tutor ( <i>desirable</i> )	I/A
5. Evidence of experience of teaching Geography to KS4	I/A
6. Evidence of experience of teaching Geography to KS5 ( <i>desirable</i> )	I/A
<b>Skills, Knowledge and Understanding</b>	
7. To be able to 'Ignite a Passion for Learning' in all students	I/A
8. To be committed to your lessons and facilitate high quality learning	I/A
9. To be very well organised and produce high quality work that meets all deadlines	I/A
10. To be able to present yourself very effectively, in both speaking and writing	I/A
<b>Personal Qualities</b>	
11. Be ambitious and have high expectations of yourself and all students	I/A
12. Be able to demonstrate strong resilience in the face of adversity	I/A
13. Be able to persevere to achieve the best possible outcome	I/A
14. Be intellectually curious and keen to learn alongside students	I/A
15. Be able to use your imagination and be a profound thinker	I/A
16. Be creative – develop new ideas/solutions that have real value	I/A
17. Be motivated to use your initiative – be an excellent self-starter	I/A
18. Be optimistic by nature	I/A

Key: A = Application, I = Interview and assessment, C = Certificate

**Stanley Park High**  
**Damson Way, Carshalton, Surrey, SM5 4NS**  
**020 8647 5842**  
**[recruitment@stanleyparkhigh.org.uk](mailto:recruitment@stanleyparkhigh.org.uk)**  
**[www.stanleyparkhigh.co.uk](http://www.stanleyparkhigh.co.uk)**

*Stanley Park High is part of Academies of Inspiration: a company limited by guarantee  
Registered in England: Company Number: 08349962  
Registered Office: Damson Way, Carshalton, Surrey SM5 4NS*

