



Candidate Information Pack

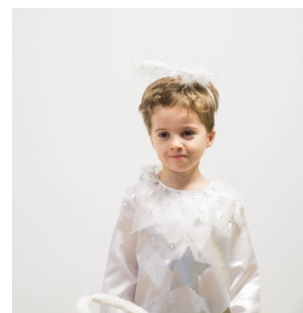
'The most exciting school in the country'
Sir Anthony Seldon

'A unique and inspirational school'
Ofsted Inspection May 2018



CONTENTS:

- Introduction to Kensington Wade
- Background to the School
- Aims & Values
- The Bilingual Immersive Model
- The Curriculum
- The Pupils
- Leadership Team
- School Structure and Growth
- Facilities
- Salary & Staff Benefit



Introduction to Kensington Wade

Kensington Wade is a new brand of school – it is the first bilingual English/Chinese immersion Prep school in Europe and, since opening in the Royal Borough of Kensington and Chelsea in September 2017, has been recognised internationally, nationally and locally as an outstanding and pioneering educational institution. The school has enjoyed huge success, so much so that it has a waiting list for new pupils to start.

Background to the School

The idea of a dual language English/Chinese school was first introduced in the USA over 35 years ago. The popularity and reputation of these schools have grown and there are now over 250 such schools in the USA. The idea to open a similar school in the UK was introduced in 2007 when the value of children learning Chinese was first realised. Work began on founding a school that would be a model for other dual language schools to follow. The Anglo-Chinese School of London (ASCL Ltd) is the operating company which owns Kensington Wade. Its chairman is Professor Hugo de Burgh, Director of the Chinese Media Centre at Westminster University. Kensington Wade has a local board of governors, comprising of professionals from a diverse field. The Chair of the Governing Body is Mr David Summerscale, previous Head Master of Westminster School.



Aims and Values

Kensington Wade aims to give children the skills and attributes that they need to be able to live and work in a world where China will play an increasingly important role. The school provides a safe and nurturing environment where children develop a love of learning; habits of independent thought and a spirit of curiosity; bilateral and bicultural skills; personal responsibility; moral integrity; mutual respect and tolerance. In addition to providing an excellent academic start in life, Kensington Wade gives the children three extra advantages:

- Fluency in Mandarin Chinese
- A bilingual mindset
- The ability to transfer comfortably between cultures

The Bilingual Immersive Model

In order to achieve bilingualism and biculturalism, Kensington Wade operates a 50-50 immersive model. Children spend half of their day being taught in English and the other half being taught in Chinese by native Mandarin-speaking teachers.

The Curriculum

The unique and exciting curriculum has been designed to prepare children for entry to leading senior schools, with high expectations of attainment. Pupils learn Mathematics, English, Chinese, Science, Geography, History, Philosophy and Theology, Computing, Art and Design, Music, Physical Education and PSHE. Each subject is delivered in both languages with successive lessons building upon the previous one (whether delivered in Chinese or English) to ensure that the children's knowledge and understanding progresses. Children are encouraged to think critically and imaginatively and, above all, love learning. Mathematics is based on the Shanghai Mathematics approach. Creativity, critical thinking and high-quality, first-hand learning experiences are considered extremely important parts of Kensington Wade's curriculum.



The Pupils

Kensington Wade serves London's growing population of professionals who work with China and want their children to be bilingually and bi-culturally fluent. The background of the pupils reflects the international outlook of the Royal Borough of Kensington and Chelsea. Children may speak one or more languages, but the majority of the pupils do not speak Chinese at home.

Leadership Team

Executive and Founding Head, Mrs Jo Wallace, has over 25 years of experience in independent prep school education. Prior to her appointment in 2017, she was Head of Putney High Junior School, one of the leading prep schools in the country.

From September 2020, Kensington Wade will have three Deputies: Deputy Head -Upper School, Deputy Head-Pre-Prep and Deputy Head – Chinese. The School Leadership Team comprises of the Head, the three Deputy Heads and the Head of Admissions and Marketing.



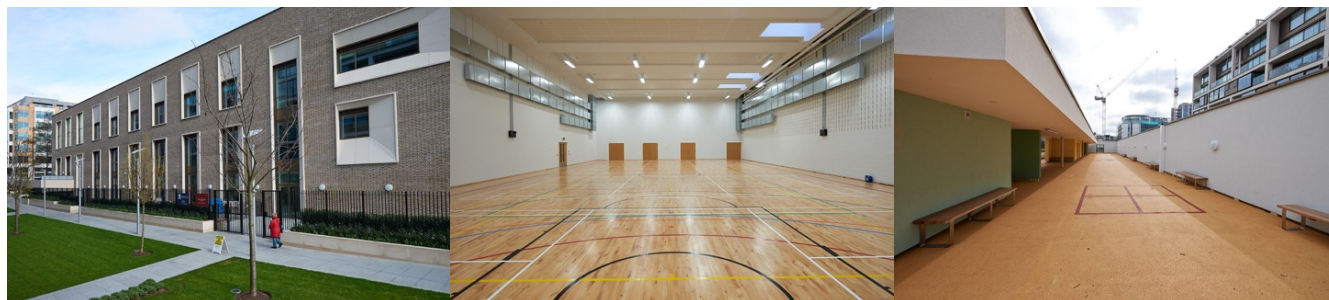
School Structure and Growth

The school opened in September 2017 with one class of 15 Early Years' pupils. A new cohort is added each year. From September 2020, the school will have classes from Nursery to Year 3. The following September, the school will go to two-form entry and will continue to grow until 2026 when the school will have children

from Nursery to Year 8. Maximum pupil numbers are 250.

Facilities

The school is located at 205, Warwick Road, sharing a building with Kensington Primary Academy. The current lease agreement with Kensington Primary Academy ends in June 2021, so the school plans to relocate to its permanent home at 30-32, Pembridge Gardens, Kensington.



Salary and Staff Benefits

Kensington Wade recognises that its greatest resource is its staff and works hard to make sure that every member of staff feels valued. We offer a competitive salary above the national teachers' scale for Inner London, 80% staff discount on school fees, excellent opportunities for staff development including visits to China, and free school lunches. Kensington Wade is a member of the Independent Schools' Association.