



**WOLVERHAMPTON**  
GRAMMAR SCHOOL

## TEACHER OF MATHS

Full-time. Required for September 2021.  
Competitive Salary available.

### PROVIDING AN EDUCATION THAT TRANSFORMS LIVES AS WELL AS MINDS

Wolverhampton Grammar School is one of the **oldest schools in the country**, founded in 1512 and as a **selective** and **co-educational independent school** of 720 pupils aged 7-18 years, it enjoys an **outstanding reputation**. Award winning and judged **"Excellent"** by the Independent Schools Inspectorate, this is your opportunity to join a **nationally recognised, forward thinking School**.



**Are you are a talented, engaging and dynamic Maths teacher? Would you like to be a part of a thriving Maths Department? If you believe in inspiring children and would like to be a member of an inclusive and diverse school community then we want to hear from you.**

You will join a community that thrives on challenge and intellectual curiosity, one where your skills will continue to be developed with an individually prepared professional development plan.

The successful candidate will join a community of teachers who excel in delivering a personalised, individual learning experience. You will have access to a range of professional support services including HR, IT, Library Services, Marketing, Communications and Development.



For more information about the School and to download the Job Description and Application form, visit [www.wgs.org.uk](http://www.wgs.org.uk) or contact Marsha Martin telephone: 01902 421326 email: [mmm@wgs-sch.net](mailto:mmm@wgs-sch.net)

**CLOSING DATE FOR APPLICATIONS: WEDNESDAY 3<sup>RD</sup> MARCH, 12PM**

**INTERVIEWS WILL BE HELD WEEK COMMENCING MONDAY 8<sup>TH</sup> MARCH 2021**

Wolverhampton Grammar School is committed to safeguarding. There will be an enhanced DBS check prior to the appointment. Registered Charity Number: 1125268.





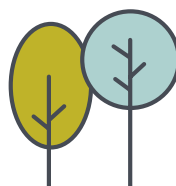
## INTRODUCTION TO THE MATHS DEPARTMENT

The study of Mathematics and Further Mathematics is an integral part of Wolverhampton Grammar School's curriculum and a core subject across the Junior and Senior Schools. The School has a strong track record of developing students who go on to use their mathematical studies and expertise to achieve academic, professional and commercial success.

The Department of Mathematics consists of six full-time teachers and two part-time teachers, teaching at all levels from year 7 to the Sixth Form. The department is housed in specific classrooms in the centre of the School campus. Full time mathematics teachers have their own classroom for the majority of their teaching, although some lessons are also taught in the purpose built Sixth Form Centre. There are integrated data projectors in all rooms and all teachers are provided with iPads and online technology to enhance their lessons. The Mathematics Department also have their own departmental office.

The aim of the Department is to provide all students with a love of maths and a genuine curiosity for the abstract concepts that Mathematics enables you to explore. Students also participate in a number of extra-curricular activities involving maths and are encouraged to take part in the annual Junior, Intermediate and Senior Maths Challenges and team competitions.

Currently, students in Years 7 and 8 are banded for teaching. From Year 9 to 11, students are allocated to sets by ability across the whole year group. It is usual for all students to be entered for higher level papers at IGCSE and students in Years 10 and 11 are



**25**  
acre site



TES  
Independent School  
Award Winners

prepared for Edexcel specification A. A large number of students take Mathematics in the Sixth Form, with some opting to take Further Mathematics. At A Level we follow the OCR A specification. Innovative teaching and learning practices are encouraged at School, with a wide range of teaching styles used and teachers are very much open to new methods. The successful candidate will be keen to contribute to this variety in their teaching at all levels in the School.

National award winning and judged "Excellent" in all areas by the Independent Schools Inspectorate, as the leading Independent school in the city we enjoy an outstanding reputation and put the wellbeing of our staff and students at the heart of everything we do. Our staff benefit from a comprehensive and personalised professional development and leadership programme.

For more information about the School and to download the Job Description and application form, visit [www.wgs.org.uk](http://www.wgs.org.uk) or contact Marsha Martin telephone: 01902 421326 or email: [mmm@wgs-sch.net](mailto:mmm@wgs-sch.net)

**CLOSING DATE FOR APPLICATIONS: WEDNESDAY 3<sup>RD</sup> MARCH, 12<sup>PM</sup>**

**INTERVIEWS WILL BE HELD WEEK COMMENCING MONDAY 8<sup>TH</sup> MARCH 2021**

# JOB DESCRIPTION: TEACHER OF MATHS

## Summary of the role:

Teachers at Wolverhampton Grammar School operate primarily in and around the classroom, but are expected in addition to contribute to the routine and extra-curricular life of the school, and to undertake pastoral work as tutors. The role of a teacher encompasses many areas and the following are minimum expectations:

## Contract/Hours of Work:

Full-time.

## Pay Grade:

Competitive salary available.

## Line Manager:

Head of Department.

## Main duties and responsibilities:

Promoting and safeguarding the welfare of children and young persons for who you are responsible and with whom you come into contact.

- to teach and prepare lessons effectively;
- to work within the departmental framework as a member of the departmental team, contributing to meetings and departmental activities;
- to share the necessary administration and preparation in support of the work of the department;
- to support and encourage colleagues;
- to set and mark homework regularly;
- to attend Parents' Evenings to discuss pupils' academic progress and future targets;
- to complete mark lists, grades, school reports routinely and occasional special reports on pupils they teach;
- to assist in the promotion of the school by helping to invigilate and/or mark the entrance examination and by making positive contributions to the open day and other marketing activities.

## Life of the School:

- to undertake whole school supervisory duties as directed by the Deputy Head;
- to make positive contributions to the extra-curricular life of the school, either as a sports coach, running an extra-curricular activity, in the musical or dramatic life of the school or in other ways;
- to take responsibility for the welfare and safety of pupils in their charge, having regard for the school's Child Protection, Health/Safety and other policies.

## Pastoral and Tutorial Care:

- to be responsible for the general welfare of pupils in their tutor groups and to be the first point of contact for pupils needing help;
- to encourage high standards of behaviour, appearance, attendance, punctuality and work; referring persistent difficulties to the Head of Year;
- to complete registration (a legal requirement) – noting absences and lateness;
- to perform efficiently the routine tasks of a form tutor.

You may also be required to undertake such other comparable duties as the Head requires from time to time.

## JOB DESCRIPTION: TEACHER OF MATHS

	<b>Essential</b> These are qualities without which the Applicant could not be appointed.	<b>Desirable</b> These are extra qualities which can be used to choose between applicants who meet all of the essential criteria.	<b>Method of assessment</b>
<b>Qualifications</b>	Qualified teacher status Good honours degree Good A Level qualifications	Evidence of formal in-service training	Production of the Applicant's certificates Discussion at interview Independent verification of qualifications
<b>Experience</b>	Teach and support students across all abilities and giving confidence to weaker students Experience of whole school and / or department initiatives	Teaching experience in an independent school with a proven track record of success	Contents of the application form Interview Professional references
<b>Skills</b>	An ability to differentiate teaching to meet all needs and to stretch the most able The ability to motivate and inspire pupils Strong ability to communicate orally and in writing Empathy when working with others Maths competency Ability to use variety of teaching methods	Strong organisational skills	Contents of the application form Interview Professional references
<b>Knowledge</b>	Knowledge of A Level/GCSE Maths specification	Knowledge of A Level Further Maths specification and ability to prepare students for Oxbridge entry would be an advantage	Contents of the application form Interview Professional references
<b>Personal competencies and qualities</b>	Passionate about teaching and learning Ability to display warmth, care and sensitivity in dealing with children and young people A positive attitude to using authority and maintaining discipline A willing team player who works productively Ability to prioritise A willingness to work with parents and carers to ensure positive outcomes Willingness to be involved in the wider life of school		Contents of the application form Interview Professional references

The School is committed to safeguarding and promoting the welfare of children and young people and expects all staff and volunteers to share this commitment.