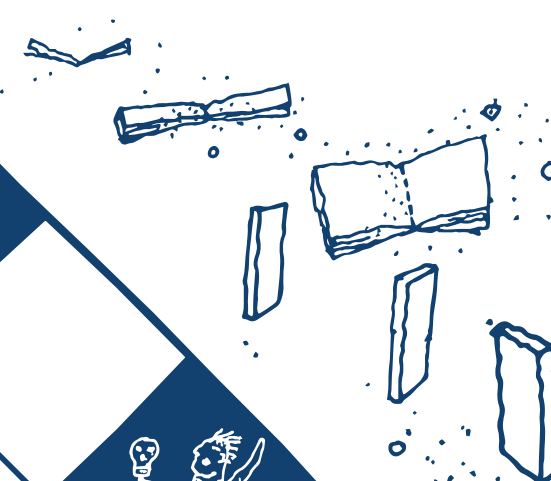
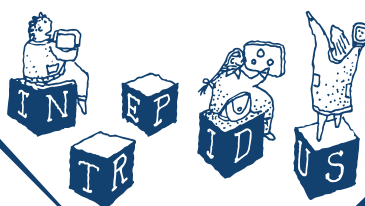
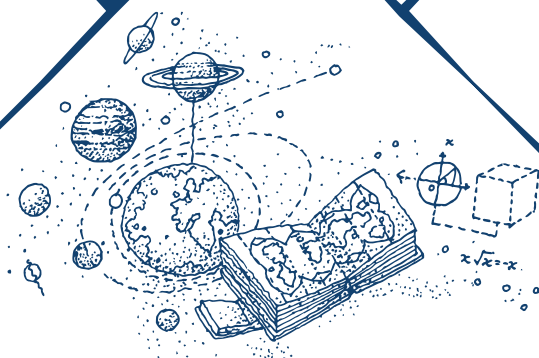


30

REASONS
TO WORK AT

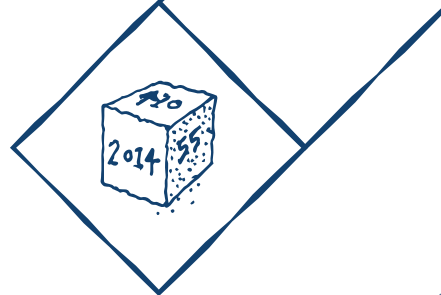


$$x\sqrt{x} = -x$$



1

Ofsted rated 'Outstanding'
in all categories



3

Based in a diverse and exciting
west London location with great
transport links and nearby access to
popular locations such as Portobello
Road market and Westfield
Shepherd's Bush

2

Purpose-built, modern building with
state of the art facilities including a
theatre and dance studio

4

Led by founding Principal David
Benson who, together with his
senior leadership team, have created
a dynamic environment where staff
pursue the very highest standards
in education

6

A traditional curriculum in academic
subjects also meeting the needs of
the modern world, allowing teachers
an exciting range of material to
work from

7

Partnerships with Godolphin
& Latymer and Charterhouse
independent schools give students
access to opportunities that are
unique in the state sector

5

An inclusive school in which
every child, regardless of their
background, has the opportunity to
make excellent progress in
their education



8

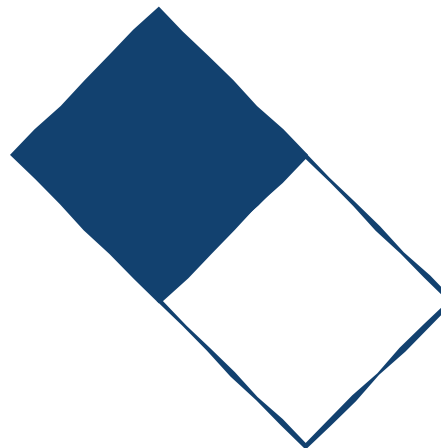
An experienced pastoral care team
executing and supporting a strong
behaviour policy

9

An Autism hub known as the 'Grandin
Centre' which provides extensive SEN
support to our most vulnerable students
and is supported by a large team of
classroom teaching assistants

10

A dedicated traveller teacher who
works specifically with the students
from our local travelling community





11

An 'Outstanding' Sixth Form which typically secures places for half of Year 13 leavers at Russell Group Universities, with a small number going to Oxbridge each year

12

A staff development programme recognised by Ofsted as high quality, which supports teachers to achieve their professional goals

13

A Performing & Creative Arts specialism, with world class facilities and expert teaching in music, drama, dance, art, and design technology

14

The KAA house system which allows healthy competition between our students and staff members

15

A school therapy dog who works with our most vulnerable students



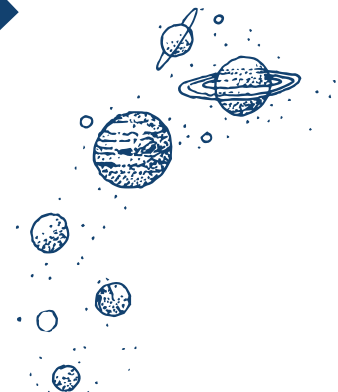
16

A range of well-being activities free to all staff including yoga, circuits, badminton and book club



17

Subsidised gym membership at the local leisure centre



19

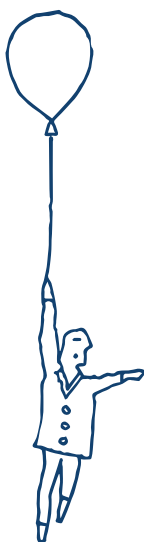
Complimentary tea and coffee for all staff

18

Free lunch provided to all staff (hot and cold food options)

20

A two week half term break in October



21

180 school days (as opposed to the 190 that most other schools have)



23

5 planning days when teachers have the option of working remotely



22

10 training days (as opposed to 5) providing further professional development for our staff



26

Employee Assistance Programme (EAP) offering a 24-hour helpline to all staff and counselling services on site

27

We follow national guidelines with regards to teacher pay and rewards

24

Teachers and support staff (if relevant) will receive a laptop upon induction to the school

25

Experienced and dedicated support function including Facilities and IT teams, who manage the operational aspect of the school allowing our teaching workforce to focus on the classroom



28

A family-friendly approach to our HR policies, wherever possible encouraging a better work/life balance for our staff

29

A centralised weekly staff bulletin which is circulated to all staff with important updates and notices to improve communication and make it manageable for staff

30

Our ethos, spirit and commitment to ever-extending student achievement make KAA an incredible place to work and learn

