



**UNITED
ENDEAVOUR**
TRUST

**RECRUITMENT
INFORMATION**



**CLAYTON HALL
ACADEMY**



**NEWCASTLE
ACADEMY**

AIMING HIGHER TOGETHER

We would like to welcome you to the United Endeavour Trust and thank you for your interest.

The United Endeavour Trust is based just outside Newcastle under Lyme and currently comprises two secondary schools, Clayton Hall Academy and Newcastle Academy, with a third joining us on 1st September. Our Trust is somewhere that enthusiastic, energetic and dedicated individuals with a talent for working with young people and a love of education can succeed.

We know our staff are our most valuable resource and we have an excellent team. Our objective is to appoint further colleagues who can build robust and effective relationships with staff, parents, students and the wider community in order to further the ethos of the Trust.

Our working environment is welcoming and supportive, with appropriate and relevant Continuing Professional Development and accredited pathways for career progression and development.

We hope that you will find the following information useful, and look forward to welcoming you to the Trust.



Wendy Whelan
Chief Executive Officer
UNITED ENDEAVOUR TRUST



Julian Morgan, Principal
CLAYTON HALL ACADEMY



Tim Rogers, Principal
NEWCASTLE ACADEMY

WELCOME



What do our students think:

"Moving up to Newcastle Academy was much better than I thought. Everyone was really friendly and welcoming from my first day onwards."

Charlotte, Year 7



**UNITED
ENDEAVOUR**
TRUST

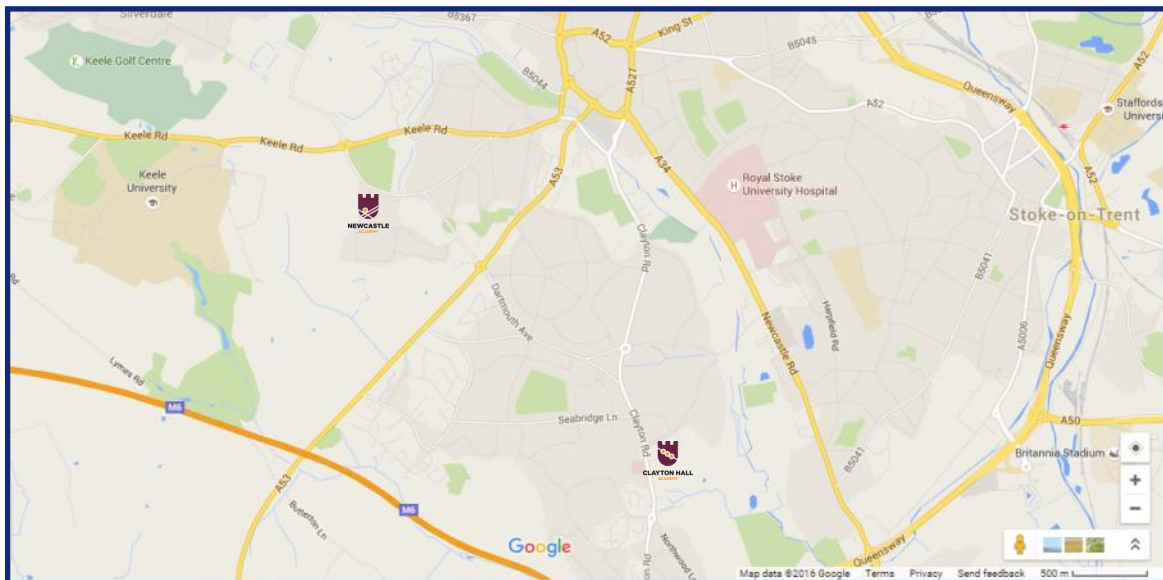
Clayton Hall Academy and Newcastle Academy formed the South Newcastle Federation in 2010 and the change of status to a multi-academy trust took place in 2015.

This close collaboration ensures we can offer staff and students at both schools much more than any single school: expanded choices and cross federation courses at Key Stage 4, additional extra curricular provision and enrichment activities, access to training support and further opportunities and more specialist facilities.

Senior leaders meet regularly to plan and we believe this co-operative approach supports staff in our continuous improvement plans. Students are exposed to wider experiences and staff have stronger collaborative networks. Best practice and new initiatives are communicated easily within the federation, and some of the challenges faced by DfE changes to curriculum and accountability can be addressed through internal systems and mutual working.

BACKGROUND





The United Endeavour Trust schools are located within the suburbs of Newcastle under Lyme, two miles apart, in well established residential areas.

Both schools are set in large grounds, surrounded by good quality housing and transport routes. We are lucky to have extensive playing fields and outdoor astro-turf facilities, as well as plenty of hard ground for play areas and parking.

Internally, the schools are well equipped with modern facilities for learning, sports and creative activities.

PORTFOLIO



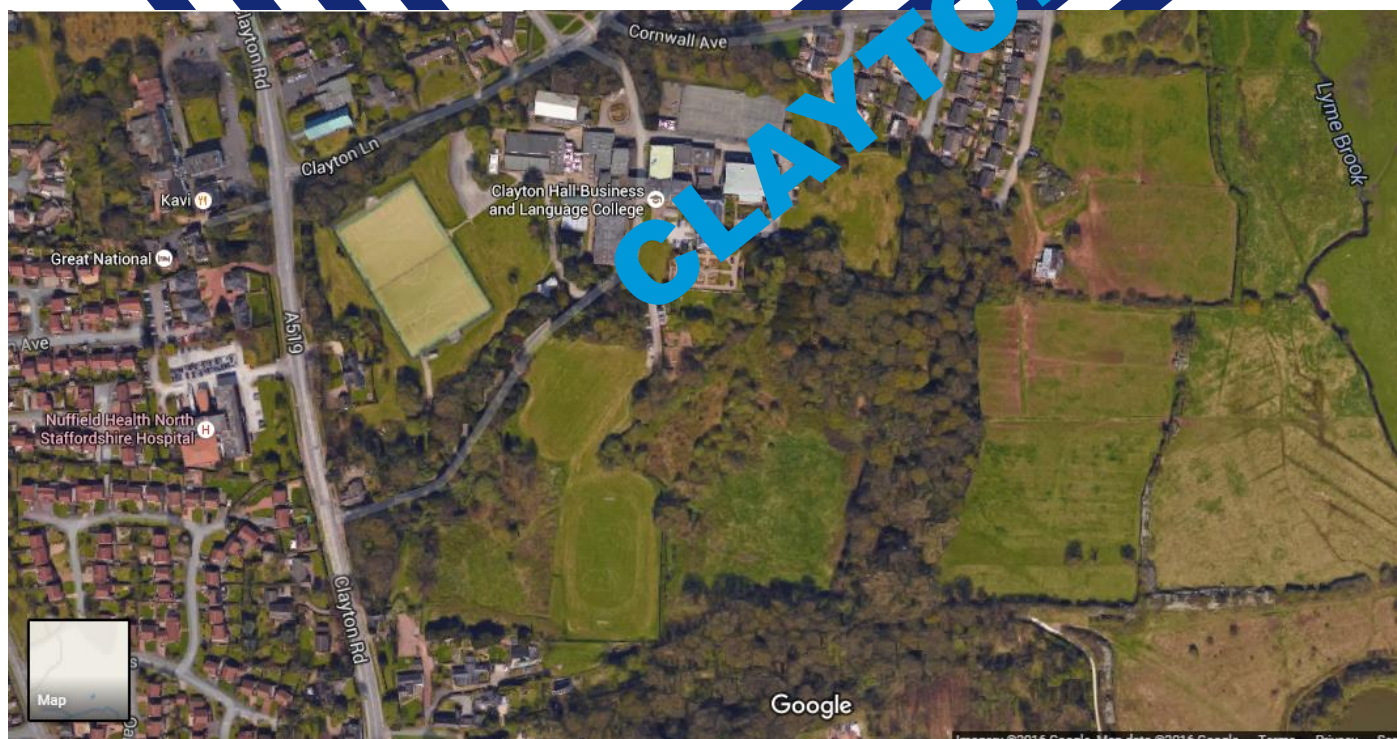
Clayton Hall Academy has developed around the original 'Clayton Hall' which was built and occupied by the Lovatt Booth family around November 1841. This was at least the third hall which had been constructed on or near this site and it now has Grade 2 listed status.

By 1891, the Billiard Room had been built, which is the present Library. The ceilings in this area are highly decorated with papier-mâché and pierced coving. Other rooms that were used by the family still have chimney breasts for open fires. The old hall was used as a family home until 1939 when it was taken over by the Fleet Air Arm as a training base during the war.



Finally in 1947 the Clayton Grammar School for Girls was established, and the site has been a school ever since. Various additions and refurbishments have taken place over the years, with the most recent buildings being erected in 1995.

The school was redecorated throughout in summer 2015 for the Academy status rebranding and a we continue to develop our school and its facilities.



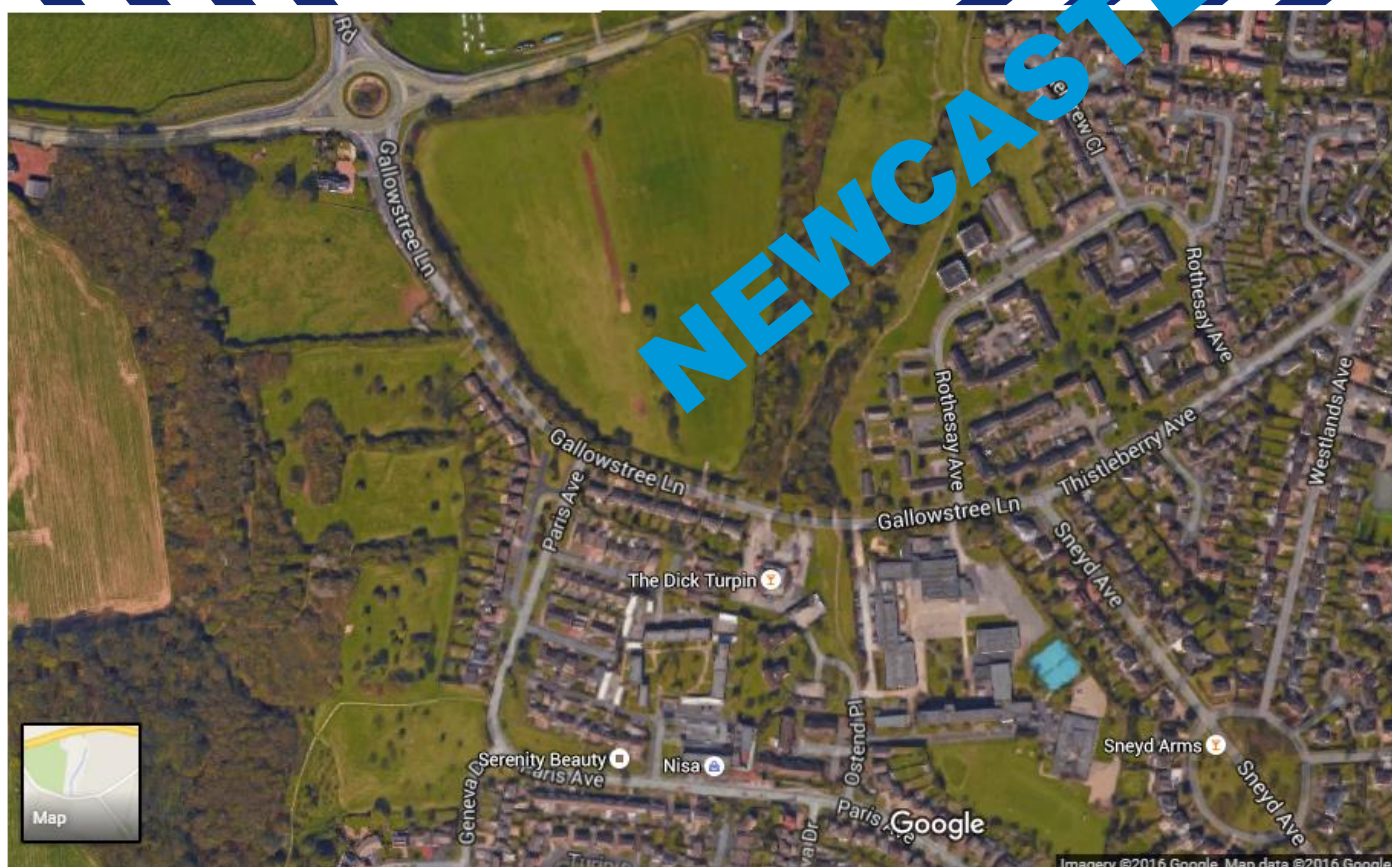
Newcastle Academy's buildings were erected in 1968 when Edward Orme County Secondary School opened on the present site as a replacement for the Orme Boys and Westlands Girls Schools.

Since that time there have been several name changes: Sneyd High School in 1985, Newcastle Community High School in 1997, then NCHS The Science College in 2008. The school first became federated with Clayton Hall Business and Language College in 2009/10.

Academy status was granted in 2015, when the school became Newcastle Academy, part of the South Newcastle Trust, now United Endeavour Trust.

The school shares its site with Westlands Primary School, but has extensive grounds in its own right, including separate playing fields on the opposite side of Gallowstree Lane.

The buildings were redecorated internally during the summer of 2015 for the Academy status rebranding and are maintained to a high standard, with a programme of continuous improvement.



The staff at United Endeavour Trust are our most valuable asset and we want to recruit team members who not only meet the technical and ability criteria but who also have passion and drive. We need staff who will embrace our culture of continuous improvement, and who want to see the Trust grow.

The Trust team offer support services to both academies which ensures standardisation of processes and procedures as well as efficiencies. The Senior Leadership Team is effective and supportive, working across both academies collaboratively with the Governing Body to provide a successful management operation.

The Senior Leadership Team comprises leaders with relevant operational skills sets, some of whom may not have direct teaching experience. Some of our senior staff and middle leaders have also come from outside industries and organisations. This ensures the SLT has access to a breadth of expertise for better informed decision making on selected aspects of school activity and maximises the development of school resources and facilities.

To attract the right candidates we offer:

- ◆ Attractive and competitive salary
- ◆ Pension Scheme
- ◆ Close team working and supportive environment
- ◆ Opportunities for progression and CPD
- ◆ Cross Federation training and experience

STAFF



What do our students think:

"The staff would do anything for you if you try for them. They will always be there for you and help you get the best out of your time here."

Morgan, Year 11



**UNITED
ENDEAVOUR**
TRUST

United Endeavour Trust is a multi-academy trust formed in 2015 from the previous federation comprising two secondary schools. Our external Trust Partners include Keele University, Newcastle-under-Lyme College and Stoke City Football Club. We are actively looking to expand under the leadership of our Chief Executive Officer and MAT Board.

The Local Governing Body comprises a dedicated team of professionals who apply their individual skills to their statutory duties and play an active part in school life, contributing fully to the smooth running and development of both schools.

We have a commitment to the local community and ensure that the school gets involved with local initiatives. Our extensive grounds and facilities are available for community use including sports teams, keep fit groups and specialist hobby evening classes.



We open up the halls and classrooms for clubs, meetings and parties, ensuring maximum use and value from our assets.



TRUST

Our Chair believes:

"We are striving to provide an excellent education for all our students, giving them skills and experience to become good citizens. Our staff are key in this and we are looking to attract and retain the best."

Andrew White, Chair of MAT Board

Both schools sit in extensive grounds surrounded by good quality residential suburbs of Newcastle-under-Lyme, an historic, floral centred market town near the Cheshire border and just west of The Potteries.

There are excellent road and rail links for Birmingham, Chester, Liverpool and Manchester, all accessible in under an hour and London Euston is only 1hr20mins from Stoke Station. Outdoor pursuits in the Peak District, Staffordshire Moorlands and Welsh Borders are all within easy reach, as are Trentham Gardens, Alton Towers and the Potteries industrial heritage sites of Stoke on Trent.

Newcastle itself has a vibrant social scene with the New Victoria Theatre, cinema and bowling complex, restaurants, bars and night clubs. Keele University campus is close to the school and Staffordshire University is less than 5 miles away. House prices are amongst the most competitive in the UK, ranging from traditional terraced town housing and modern estate developments on regenerated sites, to established suburbs and quaint country villages in the Cheshire countryside.



LOCATION

Next Steps:

To be considered for a position, please complete the school application form and return with your letter of application to:
vacancies@uetrust.org