

Moorcroft School

Learning for life



Moorcroft School

Learning for life

Welcome To Moorcroft School

Learning for life

We are delighted to introduce you to Moorcroft School and we hope that this booklet will give you a flavour of what we have to offer our students and their families.

We educate young people between the ages of 11 and 19, with severe learning difficulties, ASD, profound and multiple learning difficulties and other complex needs. Our purpose-built secondary school in Uxbridge is part of the Eden Academy's family of schools.

Our aim for all our students is to develop their skills and confidence. In the Lower School focus is on developing pupils' communication, literacy and numeracy, whilst in the Sixth Form great pride is taken in helping young people become more independent so they can face the challenges of adult life.

We are immensely proud of our dedicated team of professionals who are committed to empowering our students to achieve their full potential here at Moorcroft and throughout their lives.

Andrew Sanders, Headteacher

The (family) services are a huge help to families. We know our children are safe and having a chance to socialise with their friends in a relaxed environment. Thank you to all the staff involved for pulling it all together and sharing their enthusiasm and passion for our children. The kids love it and happy kids equals happy parents.

Moorcroft Parent



We are prepared for our next step

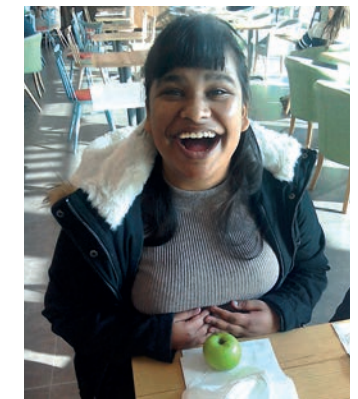


Focus young people at the core of all we do

Our focus at Moorcroft School is to enable our students to develop their independence and social skills. We see all aspects of school life as an opportunity to develop life skills and communication.

Our dedicated and experienced staff, from teachers and learning support assistants to administration staff and lunchtime key workers all promote learning so that our students are supported and challenged in all of the different aspects of their school life.

At Moorcroft we adapt our learning environments using state-of-the-art resources so that students can follow a programme specially designed to meet their educational, sensory and social needs; our classrooms are set up uniquely for our individuals. Croft House is our specialist provision for students who require a multi-sensory approach to their learning, and we have specialist classes for our ASD students which are structured to ensure they learn to the best of their abilities.



'Albert Bridge is for those pupils who need a sensory curriculum. All the targets are highly personalised to the needs of each student and we incorporate students' physiotherapy, speech and language and occupational therapy programmes into their daily timetable.'

Assistant Headteacher



We are able to make our own choices and express our needs

Inclusion

a voice for everyone and everyone is heard



Our focus at school is on personalised learning, access to therapy and social activities.

Every student that comes to Moorcroft is an individual, and we take the time to discover their skills, their needs and their personalities. Following an assessment, we create a personalised learning plan which focuses on developing their strengths and addressing their challenges. The plan is reviewed regularly throughout their school journey and beyond, so we can identify the best opportunities available.

Our class sizes are small, with an average of 8 pupils in each class. Through our teachers and qualified, experienced teaching assistants, we ensure that our students all receive an appropriate balance of whole class, small-group and individual teaching.

At Moorcroft we will meet the needs of every young person who comes through our door.

Andrew Sanders, Headteacher

Collaboration

together we are stronger

Our after-school and holiday clubs are a fantastic opportunity for our students to try new things and develop friendships - we really see how much their confidence and trust grows in our sessions!

Moorcroft Family Services Co-ordinator

Being part of the Eden Academy, Moorcroft School benefits from an enhanced range of provision, services and support, including skilled and experienced staff, high quality facilities and resources.

Students are enabled to access their education and take part in all aspects of school life through speech and language therapy, occupational therapy, physiotherapy and arts therapies including drama and music.

We run co-ordinated family services including after-school and holiday clubs, which provides our students with an opportunity to develop friendships and skills outside of school as well as access to activities, resources and support for our parents – a bridge from home to school.

Helping our students find their place in society after they leave school is key for their confidence and self-esteem. We build strong relationships with local businesses and colleges so that they can continue to learn and participate in their community through work-related activities, volunteering and events; we even run our own annual Careers Week.



The 'Making Changes' course has been a great opportunity to meet with other parents and staff to share ideas on parenting. A place I can turn to if I need extra support.

Moorcroft Parent



We are understood

We are active members of our community

Quality excellence through creativity, innovation & continuous improvement

Moorcroft School is a unique school. Our provision closely matches individual needs to each learner. We are fortunate to have abundant learning spaces which include:

- well-equipped classrooms
- small quiet rooms
- food technology room
- therapy rooms
- sensory room
- hall for PE and rebound therapy
- sensory integration room
- hydrotherapy pool
- 6th form life skills area
- large outdoor playground
- outside learning lodge
- the use of 3 minibuses
- brand new resource library



All of our pupils benefit from our adaptive facilities, whatever their strengths or needs.

We also run residential trips for our Sixth Form students which give them a chance to be more independent, develop their friendships and try something new - inevitably they also include a lot of teenage fun, mischief and laughter!

*Staff are proud of
students, support them
and are keen for them
to succeed*

Ofsted Report 2014



We take pride in all our achievements

Integrity transparency & fairness in all we do



*Students are confident
that someone will listen
to their problems and
know that there is always
someone to talk to.*

Ofsted Report 2014

At Moorcroft we are committed to listening and building strong relationships with our students, parents and staff.

We help our young people increase their confidence by praising all they do and by rewarding outstanding achievement through a weekly well-done assembly, an annual awards ceremony and through the Jack Petchey Award.

Our lively assemblies enrich the curriculum by promoting spiritual, mortal, social and cultural development. We also have a thriving School Council elected annually by our students. They make important decisions to improve their education and well-being such as planning fundraising activities, organising family barbecues and choosing decorations for the school entrance.



We enjoy our school life



Educate, Develop, Enrich, Nurture

A member of the Eden Academy



T: 01895 437799

T: 01895 438123

E: info@moorcroftschool.co.uk

W: www.moorcroftschool.co.uk

Moorcroft School, Bramble Close, Hillingdon, Uxbridge UB8 3BF