



**WOLVERHAMPTON**  
**GRAMMAR SCHOOL**

## **TEACHER OF BIOLOGY**

Required for September 2021. Full-Time.  
Competitive Salary available.

### **PROVIDING AN EDUCATION THAT TRANSFORMS LIVES AS WELL AS MINDS**

Wolverhampton Grammar School is one of the **oldest schools in the country**, founded in 1512 and as a **selective** and **co-educational independent school** of **720 pupils aged 7-18 years**, it enjoys an **outstanding reputation**. **Award winning** and judged **"Excellent"** by the **Independent Schools Inspectorate**, this is your opportunity to join a **nationally recognised, forward thinking School**.



**Would you like to be part of a thriving Biology Department? If you believe in inspiring children and would like to be a member of an inclusive and diverse school community then we want to hear from you.**

You will join a community that thrives on challenge and intellectual curiosity, one where your skills will continue to be developed with an individually prepared professional development plan.

The successful candidate will join a community of teachers who excel in delivering a personalised, individual learning experience. You will have access to a range of professional support services including HR, IT, Library Services, Marketing, Communications and Development.

For more information about the School and to download the Job Description and Application form, visit [www.wgs.org.uk](http://www.wgs.org.uk) or contact Marsha Martin tel 01902 421326 email [mmm@wgs-sch.net](mailto:mmm@wgs-sch.net)



**CLOSING DATE FOR APPLICATIONS: WEDNESDAY 20<sup>TH</sup> JANUARY, 12<sup>PM</sup>**

**INTERVIEWS WILL BE HELD WEEK COMMENCING 25<sup>TH</sup> JANUARY 2021**



## INTRODUCTION TO THE BIOLOGY DEPARTMENT

Biology is a popular subject at Wolverhampton Grammar School and the Department aims to challenge and motivate students using laboratory techniques and practical application as much as possible. We are a forward thinking department, working towards innovative methods of teaching and utilising technology in all lessons.

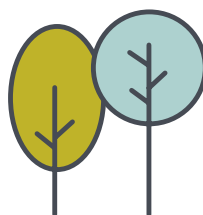
Science has a prominent place in the curriculum at the School and is taught to all year groups as three separate sciences by specialist teachers. At Key Stage 3 the emphasis is on practical work and developing the skills and knowledge, which will enthuse the students to find out more about Biology and its importance in the world we live in.

In Years 7, 8 and 9 students are taught in form groups. In Year 7 students cover topics such as characteristics of living organisms; classification and keys; variation; microscopes and cells; reproduction. In Year 8 students will study seed dispersal; seeds and germination; microbiology; enzymes and digestion; the skeleton. In Year 9 students will study cells and organisation; healthy eating; the nervous system; use and abuse of drugs; molecular movement; plant organs and transport; photosynthesis; adaptations.

While schemes of work are well established and fully resourced, there are opportunities for teachers to pursue their own interests and specialisms as we do not follow the Key Stage 3 National Curriculum. Teachers work closely with students to ensure that the challenging curriculum is offered in a supportive and caring environment.

At Key Stage 4, 90% of our students opt to study Biology and we deliver the EDEXCEL IGCSE Biology specification. In 2020, over 65% of students achieved grades 9-7 and 99% achieved a pass grade. We are constantly seeking ways to improve our performance.

At A Level we study the AQA Biology specification. Ideas are introduced within relevant and interesting settings which help our students to anchor their knowledge. The specification provides numerous opportunities to use practical experiences to link theory to reality, and equip students with the essential practical skills that



25

acre site



TES  
Independent School  
Award Winners

they need. It is a popular subject with 20% of students taking Biology at A Level with many of these going on to study Biological Sciences, Medicine, Dentistry, or Pharmacy at University. In 2020, over 70% achieved A\* - B grades and we achieved a 100% pass rate.

The Biology department consists of two specialist full-time teachers, two specialist part-time teachers and a full-time technician, teaching students from Year 7 to Upper Sixth.

The department is housed in three well-resourced laboratories which are currently undergoing a refurbishment programme, including the prep room. These are looked after by an experienced, supportive, knowledgeable and qualified Biology technician. Our resources include a wide variety of specimens; in addition to the usual models and equipment, we have a royal python and many different invertebrates. As a department we are continually investing in new resources to aid the delivery of the subject in the classroom, including teaching resources, new apparatus and apps.

National award winning and recently judged "Excellent" in all areas by the Independent Schools Inspectorate, as the leading Independent school in the city we enjoy an outstanding reputation and put the wellbeing of our staff and students at the heart of everything we do. Our staff benefit from a comprehensive and personalised professional development and leadership programme.

For more information about the School and to download the Job Description and application form, visit [www.wgs.org.uk](http://www.wgs.org.uk) or contact Marsha Martin tel 01902 421326 email [mmm@wgs-sch.net](mailto:mmm@wgs-sch.net)

**CLOSING DATE FOR APPLICATIONS: WEDNESDAY 20<sup>TH</sup> JANUARY, 12<sup>PM</sup>**

**INTERVIEWS WILL BE HELD WEEK COMMENCING 25<sup>TH</sup> JANUARY 2021**



# JOB DESCRIPTION: TEACHER OF BIOLOGY

## Summary of the role:

Teachers at Wolverhampton Grammar School operate primarily in and around the classroom, but are expected in addition to contribute to the routine and extra-curricular life of the school, and to undertake pastoral work as tutors. The role of a teacher encompasses many areas and the following are minimum expectations:

## Contract/Hours of Work:

Full time

## Pay Grade:

Competitive salary available

## Line Manager:

Head of Biology

## Main duties and responsibilities:

Promoting and safeguarding the welfare of children and young persons for who you are responsible and with whom you come into contact.

- to teach and prepare lessons effectively;
- to work within the departmental framework as a member of the departmental team, contributing to meetings and departmental activities;
- to share the necessary administration and preparation in support of the work of the department;
- to support and encourage colleagues;
- to set and mark homework regularly;
- to attend Parents' Evenings to discuss pupils' academic progress and future targets;
- to complete mark lists, grades, school reports routinely and occasional special reports on pupils they teach;
- to assist in the promotion of the school by helping to invigilate and/or mark the entrance examination and by making positive contributions to the open day and other marketing activities.

## Life of the School:

- to undertake whole school supervisory duties as directed by the Deputy Head;
- to make positive contributions to the extra-curricular life of the school, either as a sports coach, running an extra-curricular activity, in the musical or dramatic life of the school or in other ways;
- to take responsibility for the welfare and safety of pupils in their charge, having regard for the school's Child Protection, Health/Safety and other policies.

## Pastoral and Tutorial Care:

- to be responsible for the general welfare of pupils in their tutor groups and to be the first point of contact for pupils needing help;
- to encourage high standards of behaviour, appearance, attendance, punctuality and work; referring persistent difficulties to the Head of Year;
- to complete registration (a legal requirement) – noting absences and lateness;
- to perform efficiently the routine tasks of a form tutor.

You may also be required to undertake such other comparable duties as the Head requires from time to time.

## JOB DESCRIPTION: TEACHER OF BIOLOGY

	<b>Essential</b> These are qualities without which the Applicant could not be appointed.	<b>Desirable</b> These are extra qualities which can be used to choose between applicants who meet all of the essential criteria.	<b>Method of assessment</b>
<b>Qualifications</b>	Qualified teacher status Good honours degree Good A Level qualifications	Evidence of formal in-service training	Production of the Applicant's certificates Discussion at interview Independent verification of qualifications
<b>Experience</b>	Teaching and supporting students across all abilities and giving confidence to weaker students Experience of whole school and/or department initiatives	Teaching experience with a proven track record of success	Contents of the application form Interview Professional references
<b>Skills</b>	The ability to differentiate teaching to meet all needs and to stretch the most able The ability to motivate and inspire pupils Strong ability to communicate orally and in writing Empathy when working with others IT competency Ability to use variety of teaching methods	Strong organisational skills	Contents of the application form Interview Professional references
<b>Knowledge</b>	Knowledge of A Level/GCSE Biology specification		Contents of the application form Interview Professional references
<b>Personal competencies and qualities</b>	Motivation to work with children and young people Ability to form and maintain appropriate relationships and personal boundaries with children and young people Emotional resilience in working with challenging behaviours Positive attitude to use of authority and maintaining discipline Passionate about teaching and learning Ability to display warmth, care and sensitivity in dealing with children and young people A positive attitude to authority and maintaining discipline A willing team player who works productively Ability to prioritise Willingness to work with parents and carers to ensure positive outcomes Willingness to be involved in the wider life of the School		Contents of the application form Interview Professional references

The School is committed to safeguarding and promoting the welfare of children and young people and expects all staff and volunteers to share this commitment.