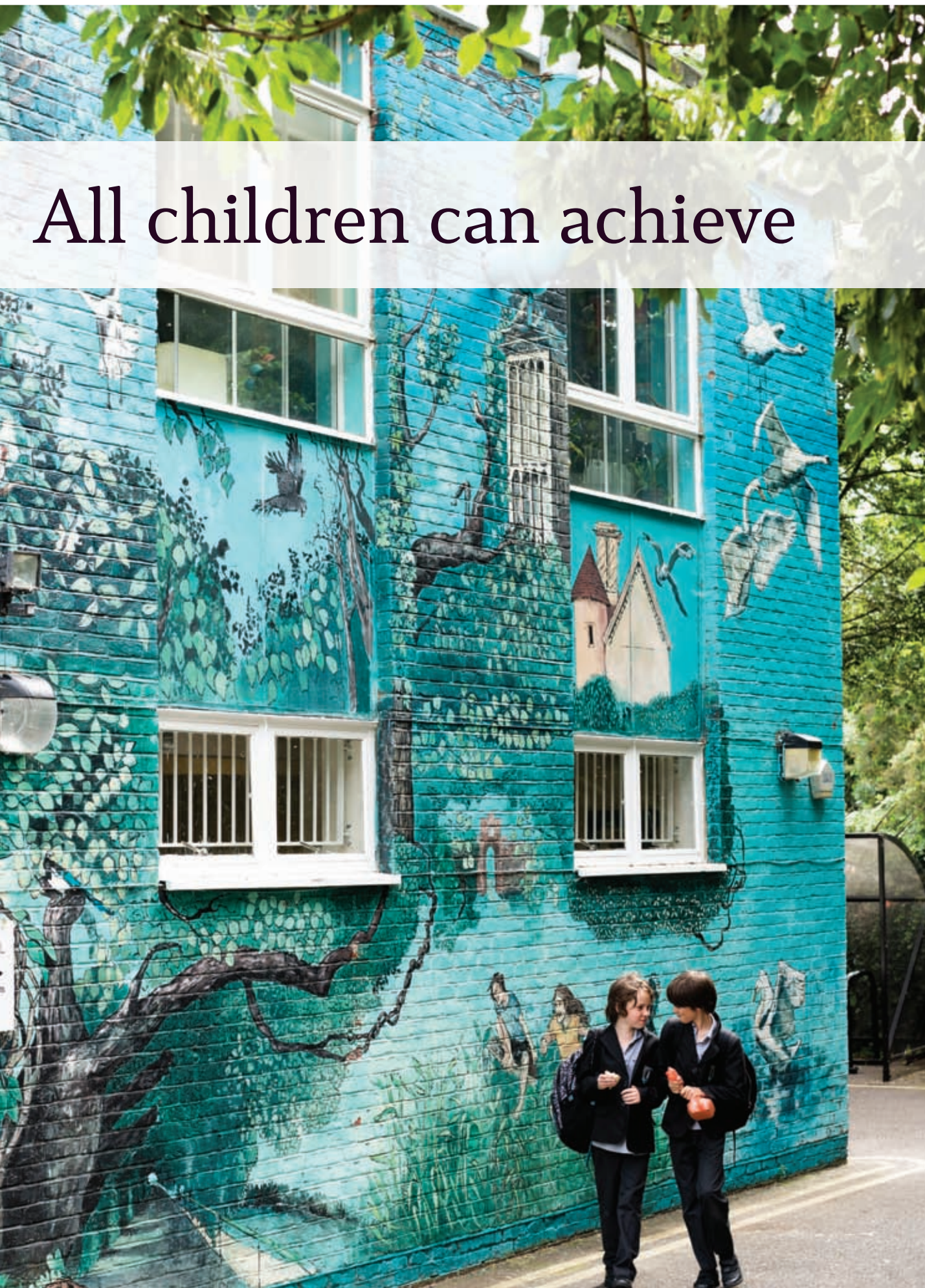




THE MOAT
SCHOOL

All children can achieve

The Moat School www.moatschool.org.uk



“Something special. Not for children wanting to be cosseted and comforted, but a hard working haven for bright, determined pupils who know what they want from life and will achieve when the chance is given”

Good Schools Guide

Key Facts

- > Ages 9-16
- > Girls and boys
- > Day school
- > Maximum of ten pupils per class
- > Specialist support for pupils with SpLDs such as dyslexia and dyspraxia, as well as support for high functioning autism, speech and language difficulties and associated needs.



Our roots

The Moat School was founded in 1998 as a pioneering school to allow children with dyslexia the opportunity to access an academic education.

Focusing on personal development The Moat is at the forefront of bespoke education for pupils with unique learning profiles.



Over the years I have worked at The Moat, I have been privileged to be part of so many success stories.

What makes my job so rewarding is that whatever challenges

our pupils face when they first come to The Moat, they leave us as confident independent young people. No two children are the same and at The Moat we are interested in children as individuals. We do not teach solely to exam but we invest in lifelong learning; when we say we are transformational, we mean it.

The level of pastoral care is apparent from the moment you walk through the door. Our pupils feel nurtured and supported through their entire time with us. The Moat is a small school with big ideas, with a team of dedicated staff whose shared belief is that pupils can and do achieve their maximum potential. The Moat is a school of high challenge and high expectations, but even higher success.

Clare King
Headmistress

Specialist support

Mainstream in structure but specialist in nature, our aim is provide an education for pupils who have struggled in traditional learning environments. In order to achieve this, whilst following the National Curriculum our staff are subject specialists and hold a post graduate qualification in teaching learners with specific learning difficulties.

Our Learning Support Assistants (LSAs) are also graduates and hold a level 3 qualification. We believe in continuous professional development and initiate whole school training programmes, such as L3 success with learners with Autistic Spectrum Disorder, to embed specialist teaching throughout all lessons.

In addition to our specialist teaching staff, The Moat School has a team of therapeutic staff that includes Speech and Language Therapists (SaLT), Occupational Therapists (OT) and School Counsellors.

Speech and Language Therapists at The Moat School help to improve pupils' receptive and expressive language skills, address vocabulary and grammar needs, literacy skills and verbal reasoning skills. Pupils who have social and emotional difficulties also receive ongoing support throughout their time at the school from the Speech and Language Therapy team through initiatives such as Group Communication sessions and 'Circle of Friends' groups.

Occupational Therapy

The role of the Occupational Therapy at The Moat School is to identify how physical, psychological or Learning Difficulties affect a child's functional skills, and to help remediate these effects or develop compensatory approaches. Through a pupil-centred approach improvements will be seen in the areas of gross and fine motor skills, visual perception, attention, concentration, self-regulation, confidence and self-esteem.



Our school counsellors work closely with pupils who have short or long term anxiety difficulties or who are going through a period of emotional difficulties. Counsellors offer a 'Come and Talk' system by which pupils can knock on their door at any time if they need to talk. They also have a caseload of individuals who they see regularly. The school counsellors offer a variety of therapies including talk therapy and play therapy.

Every opportunity is sought to develop innovative and interesting ways of improving the child's skills during their time at The Moat. Through specific skills practice, coping strategies and remediation, therapy ensures all the needs of your child are addressed.

Choosing The Moat School for your child's education is a choice that will put your child back in the running for academic success, which previously they may not have been attained.

The Moat School's main focus will always be helping pupils to achieve the results they deserve, in an environment that understands their specific needs.

Every pupil is different and at The Moat they are treated as such, tailored support can include anything from 1-1 sessions to group work.

All our lessons are designed with dyslexia and unique learning profiles in mind; we strive to make learning active and practical. Consistent reinforcement and support is given to all our pupils in order to allow them to maximise their potential.



“The pupil behaviour is excellent with rapport between staff and pupils, firm but friendly...the school is fully supported by the parents who state that the school has worked beyond expectations.”

CReSTeD report





“It’s palpably cheerful inside. The potion, as a parent describes it, ‘is an acceptance of others; celebration of your talents (which they will find); joyful eccentricity and a low anxiety environment. Resulting in happy achieving children.’”

Good Schools Guide 2018

“Excellent in every section relating to learning and pupil’s welfare.”

ISI inspection 2016

A place to grow

Every child is unique and each has potential waiting to be unearthed.

To do this, your child will need the confidence to dream and the skills to inquire, study, comprehend, lead and grow. Every aspect of The Moat’s educational provision is designed to support pupils to unlock this potential. Creativity and confidence is fostered at an early stage, so that our pupils leave The Moat School as independent learners ready to take on new challenges in higher education and throughout their careers.





“After coming to Parents’ evening and being blown away by all the positive comments about my child, I wanted to express my thanks to you all for everything you do for her. You have changed her life already in the short time she has been with you. My child is starting to believe in herself and enjoys learning which is fantastic.”

KM, Parent

The school makes use of its Extended Learning Area, which includes Bishops Park, Bishops Avenue Tennis Club and Barn Elms Boathouse on the River Thames.

All members of The Moat School have a long tradition of taking part in charity and fundraising events within the local community, many events organised by staff and the Parents’ Association and some headed by our own pupil council.

Average class size:

10



Moat success stories



Sascha Bailey
Business director

Since leaving The Moat in 2010 I have run my own artistic management company *Quite Useless* and we work with exciting emerging talent. Looking back, I think that without the infinite patience from the amazing teachers I could not have achieved what I have today. My reading and writing skills were close to non-existent before, but they have improved no end. The Moat helped me see that dyslexia is not a disability but a gift and while I have difficulty with some things, I am uniquely prepared for the world. Thanks to The Moat showing me what I can do rather than what I can't.

"I want to give a huge thanks to you, for encouraging interest in this subject and giving me the opportunity, to explore different media. I have lots of fun memories of mucking around the art room and making a mess."

**Freya Holden - Former
Moat School Pupil,
Falmouth
University student**



Charlie Prince
Freelance video editor

The Moat School really was a major turning point in my life. I had plenty of difficulties at primary school such as falling behind with work and a lack of self-confidence. It wasn't until I joined The Moat that I discovered I was actually capable of achieving. I wasn't afraid to ask questions anymore and I made new friends. My learning in the core subjects improved, and I developed a passion for performing arts. Now I work in the film and television industry as a video editor. I certainly wouldn't have studied film making at university if The Moat hadn't given me that spark, it truly was the start of my pursuing a career I knew I could do well.



Pip Harris
Psychology student

After leaving The Moat, I achieved four A-levels and am now completing a Psychology degree at Brunel University. I really would not be where I am now without the teachers at The Moat. They gave me confidence, a belief in my abilities and were so patient and inventive in finding ways to help me learn, particularly in Maths. After graduation, I intend to complete a Masters in Applied Behavioural Analysis and work within the SEN field. None of this would have been possible without the help and expertise of all the staff at The Moat.



Ela Harwood
Designer

After leaving The Moat a lot has happened that I never dreamed was possible. I graduated with a Fashion, Textiles and Knitwear degree from Winchester School of Art at Southampton University and started working for White Stuff a leading UK fashion brand. I have also started making and selling knitted bespoke cushions. My memories of being at The Moat are all very positive. I loved going to school, it gave me tonnes of confidence and brought me out of my shell. I was quiet, shy and lacked confidence; now I am a completely different person, all down to the caring and supportive staff at the school.



Jessica Ryan-Ndegwa
Furniture designer

I graduated from a Product and Furniture design degree from Kingston University, and have since been working with a charity called 'Shape Arts' with their Young Leaders Forum. They have been fantastic in helping me pursue my own creative career in the Arts by showcasing my practice. I aim to give a voice to other young disabled people by helping them fulfil their dreams in pursuing a career in the Arts. I feel The Moat was the best five years anyone could ask for; the help, support and enthusiasm of the teachers was fantastic, it helped me personally to grow to where I am today.

Admissions

Application

We know choosing a school for your child is a hard decision. Here at The Moat we try our best to help you make the best choice for your child and for you. If you have decided to move forward with the application process, and wish to register your child for a place at The Moat school you will need to complete a registration form and return it together with the registration fee of £195 to The Moat School, Bishops Avenue, Fulham, London, SW6 6EG. Cheques must be made payable to The Moat School.

We hope to see you soon at The Moat School



Visiting us and applying for a place



“The school had a terrific sense of calm, well managed energy. What I found most endearing was the mutual respect teachers and pupils had for one another.”

Simply Learning Tuition

We host regular open days which are posted online and can be found on www.moatschool.org.uk or alternatively email the office to arrange a tour.

The Moat looks forward to welcoming you and your child in the near future.

THE MOAT SCHOOL

A Part of the Cavendish Education group



THE MOAT
SCHOOL

The Moat School

Bishops Avenue

Fulham

London

SW6 6EG

T +44 (0)20 7610 9018

office@moatschool.org.uk

www.moatschool.org.uk

Cavendish Education Ltd

5th Floor

14 Waterloo Place

London SW1Y 4AR

T +44 (0)20 3696 5300

info@cavendisheducation.com

www.cavendisheducation.com