



Saint GREGORY'S
Bath



*Outstanding
Catholic education for all*

Application pack for the post of:

Teacher of Geography 0.8 FTE
(temporary maternity cover)


Closing date:

Midnight on Monday 24 June

Interviews:

Wednesday 3 July

"In Christ we flourish"

A young boy in a school uniform is playing a trumpet. He is in the foreground, looking intently at the instrument. Behind him, a girl is also playing a trumpet, and further back, a boy is playing a tuba. They are all in school uniforms. The background is a plain, light-colored wall.

“Saint Gregory’s is simply the best school in every possible way. My children have gone from strength to strength due to excellent teaching and pastoral care. They are confident, capable, well-rounded and above all, happy.”

Parent



Saint GREGORY'S
Bath

Mission Statement

As a Catholic school, our inspiration is Jesus Christ. We therefore promote the dignity and well-being of every child and ensure that they flourish with us in a safe, happy and enriching environment.

We believe that everyone is gifted and called by God to fulfil some definite service for the greater good of society. We will help our students to discover their vocation in life, to achieve their full potential and to use their gifts for the greater glory of God.

Student Creed

At St. Greg's, we are a family.
We walk together in the footsteps of Jesus.
We are all equal in the sight of God
So everybody deserves dignity and respect.
We believe that we are all blessed with gifts
And called by God
So let's do something special,
Let's work together for a better future.

In Christ we flourish.



*Saint***GREGORY'S**
Bath

Welcome to Saint Gregory's

Dear Prospective Applicant,

Thank you for your enquiry regarding the post of Teacher of Geography at Saint Gregory's Catholic College starting **September 2019**. This post is a temporary contract and will cease on the return to work of the current postholder following maternity leave.

Saint Gregory's is an over-subscribed high achieving school with a national reputation for excellence. Our most recent Ofsted and Diocesan inspections judged us to be outstanding in every area and we are committed to maintaining and developing that high standard. The Humanities Faculty at Saint Gregory's is an outstanding faculty with a proven track record in examination success and raising achievement.

At Saint Gregory's we inspire and encourage our students to fulfil their potential and flourish. We are recruiting for an ambitious, outstanding teacher who has a commitment to academic excellence and who will inspire our students to reach their potential. If you are successful you will be joining an established, successful and highly skilled team. This is a temporary, part time contract and will involve teaching Geography to mixed ability groups from Year 7 to Year 13.

As a Catholic school we provide our students with a moral compass based on Catholic Social Teaching that supports their growth and development. It is essential that our students are encouraged to have enquiring minds, ask questions and form their own opinions. The pastoral care at Saint Gregory's ensures that our students grow into well-rounded, reflective, caring and thoughtful young people, ready to take their place in society.

We are an inclusive school that places the student at the heart of everything we do. As a Catholic school our values are explicitly Christian, however you do not have to be of the Catholic faith to apply for this post.

There is a warm, welcoming family atmosphere at Saint Gregory's that underpins our culture as a school. Teamwork is at the heart of everything we do and by working together we aim to provide the very best opportunities for all our students and staff.

If you possess the necessary skills and experience and would like to apply for this post, please submit your application by midnight on **Monday 24 June 2019**. Interviews will be held **Wednesday 3 July 2019**. If you have any further questions, or would like to arrange a visit, please do not hesitate to contact my PA, Mrs Gormley, on **01225 838200** or by email at gormleys@st-gregorys.org.uk.

Yours faithfully

Ms A Cusack
Headmistress

"In Christ we flourish"



"This is an outstanding school."

Ofsted



*Saint***GREGORY'S**
Bath

About this role

Post:	Teacher of Geography 0.8 FTE (36 teaching hours per fortnight)
Contract type:	Maternity Cover - temporary and part-time
Salary:	MPS
Start date:	1 September 2019
Closing date:	Midnight Monday 24 June 2019
Interviews:	Wednesday 3 July 2019

This is an excellent opportunity for a talented and enthusiastic Geography specialist looking to begin their teaching career or an experienced colleague looking for their next career move in a high-performing and over-subscribed school. We are seeking to appoint an inspiring colleague who can contribute to the development of the department and extend the teaching of Geography further at Saint Gregory's.

Saint Gregory's Catholic College is a popular 11-18 co-educational school, founded on Catholic Christian values and with a strong family and community ethos. These values are the foundation of learning for our students, providing them with an academic start to life that is supportive, nurturing and inspiring. Saint Gregory's has a well-deserved reputation for academic excellence, outstanding pastoral care and an excellent enrichment programme.

Our most recent Ofsted and Diocesan inspections judged us to be outstanding in every area and we are committed to maintaining and developing that high standard.

The Governing Body is looking for an exceptional Teacher of Geography, to join our team in September. The successful candidate will be an inspirational teacher who will maintain and enhance our very high academic standards.

The successful candidate must demonstrate:

- A track record of exceptional Geography teaching;
- The ability to teach across the Key Stages;
- Outstanding subject knowledge;
- The ability to inspire excellence in students;
- Enthusiasm and motivation for exemplary teaching and learning.

In return, the successful candidate can expect:

- Outstanding professional support;
- A vibrant and dynamic student body that deserves the very best in teaching and support;
- Free on-site parking;
- Access to the Teachers' Pension Scheme;
- A positive student body who love learning.

If you would like to be a part of this successful and thriving school, and are a suitably qualified and highly motivated professional, we would like to hear from you.

For an open conversation about the role and/or to arrange a visit prior to application please contact the Headmistress' PA, Mrs Gormley, on **01225 838200** or email gormleys@st-gregorys.org.uk to arrange a suitable time.

We are an equal opportunities employer and are committed to safeguarding and promoting the welfare of children. We follow safer recruitment practices and appointments are subject to an enhanced DBS check. Details of our CP Policy can be found on our website at www.st-gregorys.org.uk/useful-information/key-documents.




*Saint***GREGORY'S**
Bath

About Saint Gregory's

Saint Gregory's is a Catholic voluntary aided secondary school which was established by the Diocese of Clifton. It primarily serves designated Catholic parishes in Bath and North East Somerset, North West Wiltshire and the north of the County of Somerset and admits students of 11-18 years. It is a medium-sized popular co-educational school, founded on Catholic Christian values and with a strong family and community ethos. These values envelop the learning of students, providing them with an academic start to life that is supportive, nurturing and inspiring. Saint Gregory's has a well-deserved reputation for academic excellence, outstanding pastoral care and an excellent enrichment programme.

The New Sixth is an exciting collaboration between Saint Gregory's Catholic College and St Mark's Church of England School. The New Sixth provides a unique post-16 experience in the state sector in Bath and North East Somerset; a high-quality sixth form education with outstanding pastoral support and a wide range of enrichment activities, inspired by Christian values.

Saint Gregory's has maintained its Outstanding judgement in its most recent Ofsted and Diocesan inspections.

A young woman with long brown hair and freckles is smiling broadly, touching her face with her right hand. She is wearing a dark blue school blazer over a white collared shirt. Two circular school badges are pinned to her blazer. The background is slightly blurred, showing a school interior.

“Students’ achievement is outstanding. All groups, including higher ability students, those who speak English as an additional language and those who have special needs, make rapid progress in relation to their starting point and abilities.”

Ofsted



Saint GREGORY'S
Bath

Our Location

We are located at the southern gateway to the World Heritage City of Bath with beautiful views towards the Severn Estuary and over Bath. Access to the school is easy as it is on main bus routes and next to the Odd Down Bath Park and Ride terminus.

The World Heritage City of Bath itself needs little introduction. Over four million tourists a year come to visit its many attractions, such as its Georgian architecture, its festivals, theatres, museums, restaurants and shops. It boasts excellent schools, rugby and football teams and Olympic standard training facilities at the University of Bath.

In 2017 Bath was named as the safest place to live in the UK. It is also a regular feature of the Sunday Times and Telegraph lists for best places to live in the UK, offering a very high quality of life. In 2018, it was named as the best UK city to raise a family by MoneySuperMarket.

Bath is served by many attractive towns and villages, and our staff and students come from diverse locations.

“Students make an outstanding contribution to the Catholic life of the school and benefit enormously from it. The school ethos is demonstrated by the exemplary behaviour of its pupils, their respect and care for one another, as well as their outreach to others outside the school.”

Clifton Diocese Inspection Report



Job Description

This job description should be read in conjunction with the professional duties set out in the School Teachers' Pay and Conditions Document, the governors' Pay Policy and Performance Management Policy including the Teaching Standards.

Key Areas of Responsibility

1. Core Purpose

- 1.1 To actively support and promote the school's vision and values as outlined in the Mission Statement.
- 1.2 To raise standards of student attainment and achievement in his/her classes and to monitor and support student progress in his/her classes.
- 1.3 To demonstrate excellent subject knowledge, engaging and supporting learners in academic opportunities.
- 1.4 To be accountable for the safety, well-being, development, academic progress and attainment of each student in his/her classes.
- 1.5 To be a form tutor as deployed by the Headteacher.

2. Monitoring, Evaluation and Planning

- 2.1 To attend faculty meetings as published in the school calendar with a clear focus on quality of teaching and learning, raising attainment, monitoring, evaluation and strategic planning.
- 2.2 To ensure the effective implementation of all school policies.
- 2.3 To support the Head of Faculty in analysis of exam results.

3. Curriculum

- 3.1 To ensure the provision of an appropriately broad, balanced and differentiated curriculum for students in his/her classes in accordance with the National Curriculum Programmes of Study at Key Stage 3, exam specifications at Key Stage 4 and 5 (where relevant) and the aims of the school Curriculum Policy.
- 3.2 To ensure that the spiritual, moral, social and cultural aspects of the curriculum are well covered.
- 3.3 To ensure that all statutory requirements in Geography are met, especially with regard to citizenship and work-related learning.
- 3.4 To promote a positive approach to Geography.
- 3.5 To contribute ideas to the Head of Faculty about the formulation of aims, objectives and strategic plans for the Faculty.

4. Assessment

- 4.1 To ensure the implementation of the school Teaching and Learning Policy in his/her classes, with particular regard to Assessment for Learning.
- 4.2 To follow the schemes of work at Key Stage 3, 4 and 5 in Geography (where relevant) which are appropriately differentiated to meet the needs of students with special educational needs, including the able, gifted and talented.
- 4.3 To ensure effective reporting of student progress to parents and to convene meetings with parents outside of parents' evening when necessary.



5. Discipline

- 5.1 To be responsible for behaviour management in his/her classes, contacting parents if students are persistently disruptive.
- 5.2 To uphold and implement the school's Behaviour for Excellence policy.
- 5.3 To create a positive learning environment in Geography.

6. Professional Development

- 6.1 To keep abreast of developments, including research and development in the area of effective teaching and learning.
- 6.2 To promote teamwork to ensure effective working relationships and act as a positive role model.

7. Resources

- 7.1 To be responsible for the implementation of the school Health and Safety Policy and for the safety and well-being of students in his/her classes.

8. Additional Responsibilities

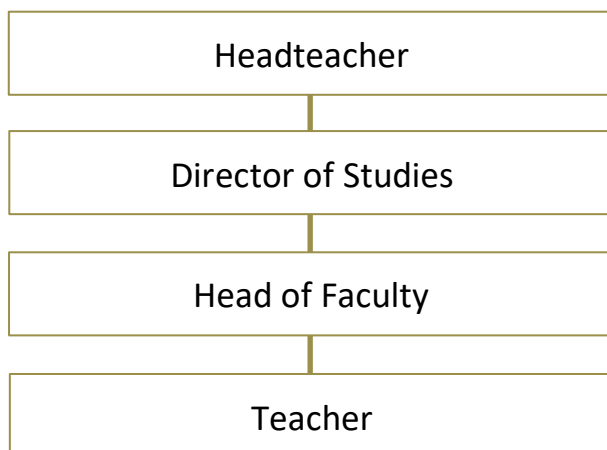
- 8.1 To actively participate in, and support the development of, the extra-curricular and/or enrichment activities in the faculty and across the whole school.
- 8.2 To perform, in accordance with any direction which may reasonably be given to you by the Headteacher from time to time, such particular duties as may reasonably be assigned to you (see: STPCD).

9. Safeguarding

- 9.1 The Governors of St Gregory's Catholic College are committed to safeguarding and promoting the welfare of children and young people and expects all staff and volunteers to share this commitment. An enhanced certificate from the Disclosure and Barring Service is required for this post prior to commencement.

10. Organisational Management Chart

This job description will be reviewed annually or more frequently if necessary by the Headteacher in consultation with the post holder.





*Saint***GREGORY'S**
Bath

Person Specification

Teacher of Geography	Essential	Desirable
Qualifications and professional development		
Qualified teacher status (QTS) or pending	✓	
Good honours degree	✓	
Evidence of relevant and recent CPD	✓	
Further study or post graduate work		✓
Other work with young people		✓
Experience/Knowledge		
Effective Assessment for Learning	✓	
Range of teaching and learning styles	✓	
Specialist knowledge of the National Curriculum up to and including A Level	✓	
Vision for personalisation		✓
Experience of teaching Key Stage 5 Geography		✓
Skills and attributes		
The ability to analyse data, identify patterns and devise meaningful targets	✓	
The ability to promote the school's aims positively	✓	
The ability to establish and develop positive relationships with students, parents, colleagues, governors and the community	✓	
Excellent IT skills	✓	
Excellent management skills	✓	
Excellent communication skills	✓	
Excellent organisation skills	✓	
Excellent classroom management	✓	
Excellent motivator	✓	
Personal Attributes		
A positive role model for students and staff	✓	
Willingness to listen to, reflect and act on feedback	✓	
Supportive of the Christian ethos of the school	✓	
Emotionally intelligent	✓	
Motivated	✓	
Enthusiastic and positive	✓	
Willing to contribute to the wider life of the school	✓	
Safeguarding Children		
A clear understanding and commitment to safeguarding and promoting the welfare of children and young people	✓	
Ability to form and maintain appropriate relationships and personal boundaries with children and young people	✓	
Appropriate attitudes to the use of authority and maintaining discipline.	✓	



“Sporting, artistic and dramatic opportunities are outstanding and all students take full advantage of the range of opportunities to develop clear, personal values and to make an impact on school life.”

Ofsted



*Saint***GREGORY'S**
Bath

How to apply

Closing date for applications: Midnight Monday 24 June 2019
Interviews will be held on: Wednesday 3 July 2019

Applicants are asked to submit their application to:

Mrs Gormley, Headmistress' Personal Assistant, by email to gormleys@st-gregorys.org.uk

They may also be submitted via post to:

Mrs Gormley, Headmistress' Personal Assistant
Saint Gregory's Catholic College
Combe Hay Lane
Odd Down, Bath, BA2 8PA

Please note that no other material (such as testimonials, résumés or CVs) will be considered during the selection process.

To arrange a visit prior to application or to discuss the role further with the Acting Director of Studies, Mrs J Cleveland, please contact the Headmistress' Personal Assistant, Mrs Gormley, on **01225 838200** or email gormleys@st-gregorys.org.uk.

We are an equal opportunities employer and are committed to safeguarding and promoting the welfare of children. We follow safer recruitment practices and appointments are subject to an enhanced DBS check. Details of our CP Policy can be found on our website at www.st-gregorys.org.uk/useful-information/key-documents.



Saint **GREGORY'S**
Bath



Outstanding Catholic education for all

Saint Gregory's Catholic College

Combe Hay Lane,
Odd Down, Bath, BA2 8PA

T 01225 832873

F 01225 835848

E stgregorys_sec@bathnes.gov.uk

www.st-gregorys.org.uk

"In Christ we flourish"