



Kensington Park
SCHOOL

School Brief

Our School



Kensington Park School is a small coeducational day and boarding school which is set in the heart of cosmopolitan central London. Small class sizes ensure that we are a friendly, welcoming and academically purposeful school; where the individual can excel within a community; where pastoral care is paramount and the warm relationships between students and teachers are the heart of the tremendous achievements of our girls and boys.

We are passionate about enabling young people to fulfil their potential and students at KPS should be excited, challenged and inspired, as well as unconstrained by preconceived expectations. Our staff will support the development of each individual child so that students acquire confidence in their own ability and in the process discover their strengths, recognise their weaknesses and make the most of their talents.

The excellence of academic and co-curricular provision is at the heart of an outstanding education. Crucially this is only realised if they are inextricably bound together by strong community values. The community at KPS is centred on each individual and values such as kindness, moral integrity, responsibility and a sense of service. At KPS we will build the shared values of decency, harmony and trust within our community so that they will endure within individuals when they leave our school.

We are committed to preparing our students for the journey of life beyond Kensington Park School, which will be without the individual and focused support of teachers, tutors, pastoral staff, coaches and mentors. Transition through KPS is not simply 'more of the same', but rather it presents exciting new opportunities that stimulate aspiration, and in the process will ensure that the roots nurtured at each phase will provide confidence as they mature and ultimately give them the wings to fly when they leave. This is reflected in the twin sites that we operate with the Lower School at Bark Place and the Sixth Form at Queen's Gate.

The Lower School (Years 7-11) provides a wide-ranging and balanced curriculum where all children are educated in all aspects of learning – linguistic, mathematical, scientific, technological, human, social, physical, aesthetic and creative. It includes not only the formal requirements of the schemes of work in which children acquire skills in speaking and listening, literacy and numeracy, but also the extra-curricular activities that the School provides in order to enrich the children's experience. The curriculum is tailored to suit the aptitudes of all children including those with learning difficulties or particular talents and abilities. Students are taught personal, social, health and economic education within lessons, through tutors and the safeguarding and pastoral team; they receive first hand exceptional pastoral care.

The Sixth Form continues with the provision described above; providing students with an education that equips them with the appropriate learning and skills to enable them to achieve the qualifications necessary to proceed to their next stage of education. The school provides supportive guidance and advice enabling students to maximise their potential with regard to university admissions, whilst the curriculum and the co-curriculum work together to prepare students for the workplace in the best possible way before they leave.

From entry at either Year 7 or Year 9, students follow a broad traditional syllabus which includes English, Maths, the sciences, modern foreign languages (including Mandarin Chinese), Computer Science, Geography, History, Classical Civilisation, Religious Studies, Drama and Music. This is supplemented by four periods of sport each week. During Year 9, GCSE subjects are selected for study in Years 10 and 11. The core subjects, including Maths, English, a modern foreign language and the sciences, are studied alongside these free-option choices. Students will typically study 9 or 10 subjects at GCSE level. Moving to the Sixth Form, our students will generally select three A-Level subjects, in some cases a fourth may be added.





At Kensington Park School, it is our mission to excite, challenge and inspire each of our students so that they become life-long learners and outstanding young people. Each student is encouraged and expected to become a self-aware, confident, caring and independent young adult such that when they leave, they will be ready for the world beyond school: able to engage, lead, and shape their own future successfully.

We seek, through our aims list below, to offer an intellectually exciting environment in which students can learn and grow, but also have fun:

- **Values**

Our values underpin what we are and do, emphasising humility, kindness, responsibility and duty. We promote a positive approach to healthy living and responsible attitudes, including those linked to sustainable living, towards the wider community both at home and overseas.

- **Aspiration**

Each individual is supported and challenged to fulfil their potential which should be unconstrained by preconceived expectations – in short, to become the best possible version of themselves. Our students acquire confidence in their own ability and in the process discover their strengths, recognise their weaknesses and make the most of their talents.

- **Excellence**

When we use the label of excellence at KPS, we must be certain of one thing only – that each day it is the collective responsibility of the staff and students to ensure that our students achieve the best possible grades of which they are capable. Students should be ambitious, to achieve their best: in and beyond the classroom, in mind, body and spirit.

- **Community**

We are a small school with a close-knit community: everyone is expected to care for and to respect everyone else. We place great store by the strength of relationships: between students and between students and all staff. Pastoral care is at the heart of the School and with this comes a paramount commitment to safeguarding and the welfare of each and every student.

- **Learning**

To provide a modern curriculum which promotes intellectual curiosity and creativity, which fosters a love of independent learning. We encourage intellectual curiosity and provide countless opportunities to explore, develop and discuss ideas.

- **Independence**

We are one community but we celebrate and encourage individuality. Each student will be treated as an individual and developed as one. Diversity of interest, personality, background, and beliefs really matter. The intention is to equip students with the tools and self-efficacy to meet the challenges of the modern workplace and the global economy.

- **Inclusion**

The School is set in the heart of cosmopolitan central London and this diversity is reflected in our student body. We seek to be as inclusive as possible in all aspects of the School.

- **Personal development**

Students are encouraged to develop as individuals who know what they believe in and stand for. Part of this is the building of leadership - for some this will be with natural authority, for other this will be more quietly. All should gain increasing confidence to be themselves and to do the right thing - to stand up for what is right and set an example to others.

- **Partnership**

We are not a school in isolation and seek partnerships at home and abroad to share good practice, broaden horizons and develop a balanced and global perspective for all students.

- **Challenge**

Students should develop resilience and character: they must be stretched intellectually and physically, taking on new things, being exposed to risk and learning to fail as well as succeed with good grace and courage.



- **Culture**

Aesthetic appreciation is a fundamental part of a rounded education. Set in the heart of cultural London, students interact with art, literature, music and drama as part of their daily lives, learning to understand and engage with each.

- **Innovation**

The school is committed to delivering education in the most effective way, harnessing the benefits of technology and research.

- **Experience**

Breadth of experience is crucial. Within and beyond the School, students are able to involve themselves in a huge array of activities; whilst each will find their niche and specialism, all will equally benefit from breadth.

- **Enjoyment**

Above all things, education is to be enjoyed. This, we hope, stems from the environment which excites, challenges and inspires each individual, and the School, to achieve success.





Equal Opportunities

Kensington Park School is committed to promoting equal opportunities in employment for anyone with the right mix of qualifications and abilities, talent, personal qualities, skills and potential. Any employee and job applicant will receive equal treatment in line with the provisions of the Equality Act 2010. We welcome applications from candidates of diverse backgrounds and personal circumstances.

A detailed Equal Opportunities Policy is available on request from our Recruitment Team.

We offer to our employees:

- a competitive pay that is commensurate with the requirements of the role as well as with the candidate's experience and contribution they can make to our School community;
- complimentary lunches during term time provided by our exceptional catering partners;
- subsidised education at the School for their children (subject to usual entry requirements);
- support in training and CPD activities (terms and conditions apply).

Safeguarding the Welfare of Pupils

Kensington Park School is committed to safeguarding and promoting the welfare of children and young people and expect all staff and volunteers to share this commitment. Applicants will be required to undergo child protection screening appropriate to the post, including checks with past employer and the Disclosure and Barring Service, as well as have due regard for the school's Safer Recruitment and Safeguarding (Child Protection) policies when applying for any position at the school.

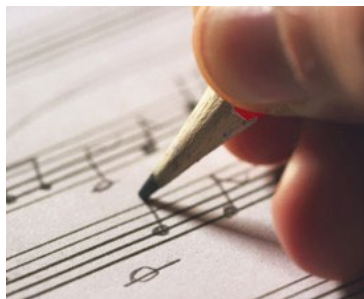
The School's Child Protection and Safeguarding Policy as well as Safer Recruitment Policy are available from our [website](#).

Recruitment of ex-offenders & Security of Disclosure Information

Kensington Park School meets the requirements in respect of exempted questions under the Rehabilitation of Offenders Act 1974 (Exemptions) Order 1975 (amended 2013). Any convictions, cautions, reprimands or warnings must be disclosed to the School. Upfront disclosure of a criminal record may not debar a candidate from appointment. The School shall consider the nature of the offence, how long ago and at what age it was committed, and any other relevant factors. Certain spent convictions and cautions are 'protected' and are not subject to disclosure to employers and cannot be taken into account.

Guidance and criteria on the filtering of these cautions and convictions can be found at the [Disclosure and Barring Service website](#).

All applicants who are offered employment will be subject to an enhanced criminal record check from the DBS before the appointment is confirmed. It is of fundamental importance to KPS to ensure, so far as possible, that those who take up appointments do not pose a risk to the children in our care.





Kensington Park

S C H O O L

Chief Science Technician
(Full-time|Permanent)

April 2023

Closing date:
12 noon, Monday 20th March 2023



About the role

CHIEF SCIENCE TECHNICIAN

FROM: April 2023

Kensington Park School is seeking an inspirational and enthusiastic Chief Science Technician. The successful candidate will help to consolidate and develop excellence in the delivery of Science teaching (Chemistry, Biology and Physics) across both the Lower School (11 - 16 years), where GCSEs are taken, and the Sixth Form for A levels.

Kensington Park School is a co-educational independent school (11-18) situated in the heart of cosmopolitan London with a commitment to the principles of equal opportunity, diversity and inclusion. The School combines a rigorous academic education with an emphasis on developing the whole student by giving them a broad educational experience and strong pastoral care. The small class sizes ensure that a personalised and individual education is delivered to each student. The School has an extensive and thriving co-curricular programme to which a contribution will be expected.

The salary will reflect individual experience. This post would equally suit an experienced classroom practitioner or an individual who is new to teaching.

Applications, which should include a covering letter addressed to the Headmaster and a fully completed Application Form, should reach the School no later than Monday 20th March 2023 at 12 noon.

Kensington Park School is committed to safeguarding and promoting the welfare of children and young people and expects all staff and volunteers to share this commitment. Applicants will be required to undergo child protection screening appropriate to the post, including checks with past employers and the Disclosure and Barring Service.





Job description

Job Title: Chief Science Technician

Reports to: Head of Science Faculty

Key responsibility (apply to both Lower School and Sixth Form) is detailed below:

- This is not an exhaustive list of all responsibilities or duties but reflects the core of the role.
- To act as Chief Science Technician for both Kensington Park School (11-16) located in Bark Place and Kensington Park Sixth Form (16-18) located in Queens Gate, South Kensington.
- To provide technical support to Chemistry, Biology and Physics on a daily basis.
- To consult regularly with teachers in each Science department to help deliver excellence in the teaching of Science across all three departments.
- To liaise closely with the Heads of Science for budget control, and management of future running budgets.
- To plan and manage resources and small projects such as science club, STEM club etc.
- Proposing, negotiating and administering the departmental budget, including any ICT requests.
- To liaise regularly with the Heads of Science over issues relating to Health and Safety and Risk Assessment.
- To create and monitor stock lists and audit all resources relating to the provision of Science teaching across both parts of the school.
- Attending Science meetings and assisting in science trips.
- Encouraging the use of ICT and data logging within the department.
- In the event of a major incident or disaster, you may be required to provide assistance, in whatever capacity necessary and participate in any training to ensure the School is fully prepared for such events.
- To demonstrate a commitment to improving and developing the organisation's processes and facilities.
- To carry out such duties that maybe reasonably required by your line manager.

The organisation reserves the right to alter the content of this job description after consultation to reflect changes to the job or services provided, without altering the general character or level of responsibility.

Health and Safety

All employees of KPS must have due regard for general Health and Safety, acting according to school policy and the Health and Safety at Work Act (1974).

Training

Kensington Park School is committed to CPD, such training is to be cleared by the Head of Faculty prior to booking. All training necessary to bring the incumbent



Job description

Safeguarding

Kensington Park School is committed to providing the best possible care and education to its pupils and to safeguarding and promoting the welfare of children and young people. The School expects all staff, contractors, governors and volunteers to share this commitment.

PERSON SPECIFICATION

	Essential	Desirable
Education and Qualification	<ul style="list-style-type: none">• Good Qualification or Degree in one of the three major Science subjects, but not essential	<ul style="list-style-type: none">• QTS/PGCE• 1st Aid Training
Experience	<ul style="list-style-type: none">• Prior experience of providing technical support for science• Experience of managing a budget	Management of people
Skills and Ability	<ul style="list-style-type: none">• Excellent IT and administration skills are required for this post as is a good understanding of Microsoft Office.• Good communication skills are essential, as is the ability to work with others as part of a team or on your own initiative and work closely and responsibly with children.	<ul style="list-style-type: none">• Practical• Enthusiastic• Creative• Confident• Diligent• Cooperative• Organized• Punctuality
Knowledge	<ul style="list-style-type: none">• Safeguarding• CLEAPSS & COSHH regulations	



How to Apply



Applications

An application form is available to download from the staff vacancy page of the school website: www.kps.co.uk, or by emailing vacancies@kps.co.uk

The closing date for applications is **12noon on Monday 20th March 2023**

Applications must be submitted in full by the advertised closing date for entries. Early applications are encouraged as they may be reviewed upon receipt and interviews may be scheduled in advance of the closing date.

A formal offer of employment will always be dependent upon receipt of satisfactory references. Where possible to do so the school will seek references prior to interview.

Details of at least two referees will be obtained, one of whom must be current or most recent employer. Qualification certificates (originals only) will be required at interview, as will proof of identity, right to work in the UK and domicile.

All applications should consist of a covering letter addressed to the Headmaster and a fully completed application form. Please note that CV will not be accepted nor will incomplete application forms.

Applications may be submitted by email or posted to the School.

School Contact Details:

Kensington Park School – Lower School
40-44 Bark Place
London
W2 4AT
+44 (0)20 7616 4400

Kensington Park School – Sixth Form
59 Queen's Gate
London
SW7 5JP
+44 (0)20 7225 0577



Kensington Park
SCHOOL



An independent day
and boarding school for
students aged 11-18 in the
heart of London.

www.kps.co.uk