



Northstowe

Secondary College

Teacher of Design and Technology
(Full or part time applications considered)
Required for September 2022



Welcome Letter

Dear applicant,

Thank you for your interest in the position of Teacher of DT at Northstowe Secondary College, part of the Cambridge Meridian Academies Trust (CMAT).

Northstowe Secondary College is a brand-new secondary school at the heart of the Northstowe Education Campus, which opened to Year 7s in September 2019. The school currently has approximately 300 students in Years 7-9 and will grow year on year until it reaches its full capacity of 1,200 students aged 11-16. There will be a further 400 places available for sixth form students. It is an exciting time to join our team as we become the cornerstone of the Northstowe Learning Community, which will include a primary school, a special educational needs school and a sixth-form college.



Our brand-new site offers a range of impressive facilities, including two artificial pitches, hard courts, a dance studio, an activity studio, a 400-seat theatre, a café, a fitness gym, a community meeting room, and a four-court sports hall. You will be part of an experienced team that is creating an inclusive, innovative, and aspirational learning environment for our students and our local community.

To get an insight into daily life at the College, please watch our welcome video (https://youtu.be/3EokN_apA0I) and curriculum video (<https://youtu.be/g4tFeF9zWqI>) or visit our Facebook page (Northstowe Secondary College).

We are proud to be part of CMAT. Our Trust was first formed to lead a federation of schools in 2006 with a desire to provide high quality and dynamic education for everyone, right in the heart of our community. Through various government policies, our commitment to collaboration has remained consistent. We are a growing family of 25 academies, all within easy distance of Cambridge and Peterborough.

CMAT is one of the highest performing academy groups in the country and the largest in Cambridgeshire and Peterborough. We are committed to high quality professional development and career opportunities for all staff and strive to work at the heart of all the communities we work with. This role will inevitably involve a considerable amount of partnership working within the Trust to search out great practice to ensure wonderful opportunities for our young people. <https://www.cmatrust.co.uk/about-us/cmat-10-a-decade-of-achievement/cmat-timeline/#>

It is essential for the successful candidate to demonstrate our values which are *Kind, Curious* and *Hardworking*.

If you would like an informal discussion about working for Northstowe and CMAT or about this role, please contact: recruitment@northstowesc.org

This will be an exciting and very rewarding role and we look forward to receiving your application.

Yours faithfully,

Carole Moss
Headteacher

NSC Vision and values

Northstowe Secondary College is in an enviable position, located at the heart of what will be a thriving new community. It is our aim to deliver excellent education for local young people; to ensure that every individual is a confident successful learner, independent and a responsible and employable citizen.



Northstowe Secondary College is at the heart of the local community where every child is known, valued and supported.

In our school we focus on the development of the whole child. We believe that every child can achieve, given the right opportunities and we do not believe in putting a ceiling on a child's potential. We also understand that being successful at life means supporting students' personal growth and well-being. That resilience, perseverance and coping skills are essential for students to be able to tackle all that life brings. We pride ourselves on knowing and valuing every child to support them to achieve their dreams and ambitions.



Kind students who care about each other, the community and the wider world.

Curious students who want to find out more and are open minded to find creative solutions.

Hardworking students who practise, persevere and keep going even when things are challenging.

Northstowe Secondary College holds the three key values of **Kindness**, **Curiosity** and **Hard work** at the heart of all that it does. All staff are expected to demonstrate those values towards others and to explicitly teach these to the children. We are an inclusive family and expect our staff to be passionate about their subject and what it can give to children, adapt their teaching to meet the needs of the students, work proactively to promote good behaviour and to maintain these high standards in their classrooms and around the school. As a small group of staff in a brand-new school, we all have to go the extra mile however, we promote and support a good work life balance, we are a kind and supportive team and we have a lot of fun. If you think you have what it takes, then we look forward to hearing from you.

CMAT Vision and Values

Cambridge Meridian Academies Trust (CMAT) exists to provide, support, and champion high-quality education at the heart of local communities.

As members of the CMAT family, trust academies aim to unite their pupils, families and other local stakeholders around this common purpose to share experience and resources, to improve standards and to maximise our contribution to their wider communities. Our vision, mission and values guide and bring together each of the trust's academies.

Our Vision: High-quality educational provision for all at the heart of local communities

Our Mission: To deliver, promote and inspire high quality educational provision in schools at the heart of their local communities so that:

- Every child is a successful learner, confident individual and responsible and employable citizen
- Every school is a hub for community activities, a centre for extended services and a source of immense pride for students, their families and other local stakeholders

Our Values:

Pursuit of Excellence

- By expecting this of every person, every day
- Rejecting outright any sense of complacency
- Continually striving for the creation of a true meritocracy
- Promoting and celebrating elite performance inside school and in the wider world

Value our People

- Appreciating the incredible trust placed with us in educating young people and serving our community
- Valuing the diversity and qualities of our staff and students
- Ensuring that all students and staff feel known, appreciated and supported
- Committing whole-heartedly to collaboration within, between and beyond our academies

Achievement for All

- Ensuring that every student achieves their maximum potential
- Maintaining a relentless sense of optimism
- Removing barriers to learning
- Providing a whole education: academic excellence co-existing with an exceptional commitment to activity beyond

High-Quality Learning Environment

- Providing high quality buildings, engaging classrooms and excellent sporting facilities
- Delivering innovative learning resources and materials
- Ensuring a well-disciplined and caring environment
- Exploiting cutting edge technologies to expand the opportunities for students, staff and our community to benefit from learning in a digital age

Extending The Boundaries of Learning

- Providing positive memorable experiences inside and outside of the classroom
- Providing a diversity of experience to all
- Opening up the world to all students
- Securing the very best future educational and vocational experiences for our students

Academies within the Trust

<https://www.cmatrust.co.uk/cmat-academies/>

About Northstowe

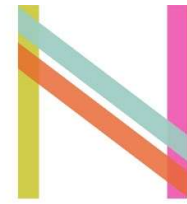
Northstowe Secondary College is at the heart of the new town of Northstowe. This unique town will have up to 10,000 homes, making it the largest new town in the UK since Milton Keynes.

Northstowe was designed to encourage active lifestyles, independence and happiness, providing excellent facilities for people to play, relax and enjoy sport.

Nature is never far away from Northstowe as the area is dedicated to sustainability and protecting and enhancing the local biodiversity. The landscape in and around Northstowe has been crafted with health and wellbeing in mind and features acres of green space, parks, countryside and heritage sites.

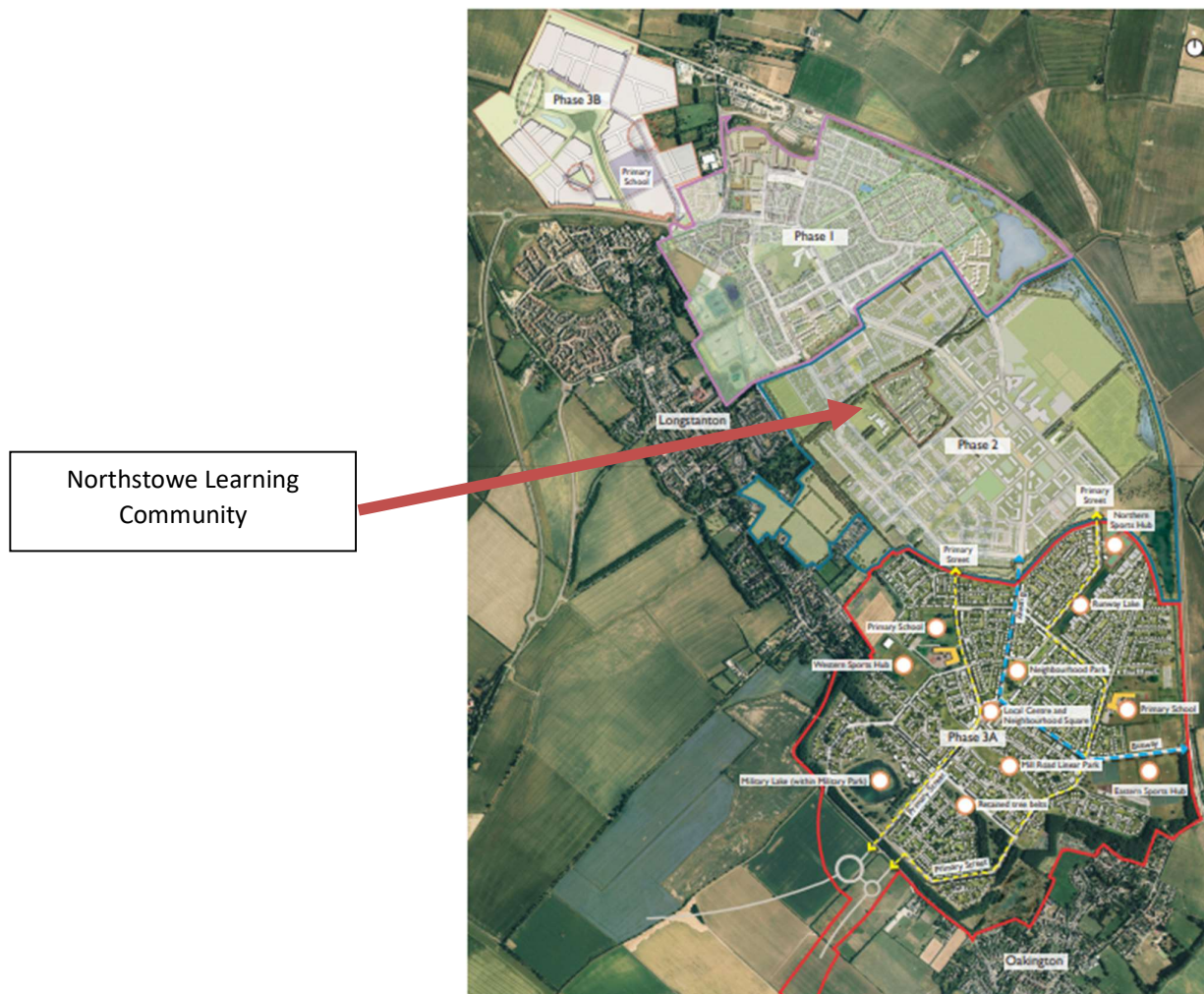
The town is ideally located for weekend and evening trips to Cambridge and London and provides you with great transport links that can get you to other parts of the UK quickly and easily. Northstowe also includes a network of cycling and walking routes, electric vehicle charging points, plus a new link road connecting the town centre to the A14.

To find out more about Northstowe, visit: www.northstowe.com.



NORTHSTOWE

Northstowe Illustrative Masterplan



Job Description: Teacher of Design and Technology

| | |
|------------------|--|
| Scale: | MPS / UPS |
| Hours: | Full time or part time |
| Responsible to: | Curriculum Leader |
| Additional info: | An ability to teach Computer Science would be an advantage |

Key responsibilities and tasks

Kind

- The role of the Form Tutor is fundamental to our ethos in all CMAT schools. You are expected to really know and understand your tutees and form working relationships with their families, this is a non-negotiable for us at NSC. You are their first port of call and you must want to be. Extra time is given to allow you to be able to fulfil this important role. You are expected to follow the Form Time programme, which includes our powerful words and book club.
- To undertake supervision duties at breaktime, after school etc, as directed by SLT, where suitable. In our early years as a small staff team, these may be more than usual if you are teaching under capacity.
- To understand that as a small school we all go the extra mile to enable the students to have a full and rich experience. This means we help and support each other by taking on things that you might never experience in a large secondary school.
- Follow the marking strategies and assessment philosophy that aims to reduce workload, to commit to not sending emails after 5.30pm and at the weekends and to genuinely care about the other members of staff you work with, both teaching and support staff.
- Really care about the NSC family, the staff, the children and the families. Be ready to adapt. We do not discard children. We all have a role to play in keeping our children in school, loving their learning and becoming great people.

Curious

- Be passionate and excited about your subject and want to share that enthusiasm with the young people that you teach.
- Be adaptable, open and willing to learn and grow in your teaching role. None of us are the finished article and none of us want to be, we expect you to remain curious about your teaching.
- To read, be curious and keep up to date with current thinking and new initiatives regarding DT teaching. Bring new ideas, keep being excited about your subject.
- Work with the SEN department to stretch and challenge all pupils, offering all students a culturally rich curriculum, whilst allowing all students to access high quality material.
- Engage in CPD that asks you to reflect on research on good teaching and knowledge acquisition.
- Work with staff across departments to build on knowledge and shared content to deliver a consistent approach to key skills and key vocabulary.
- To attend and contribute to DT Department meetings held at College and across the Trust.

Hardworking

- To plan and teach Design Technology effectively and creatively across the age and ability range, to meet the needs of the children in your classes.
- Plan Schemes of Learning that develop student knowledge to cover the National Curriculum and effectively prepare students for success at GCSE and A-Level study.

- Set homework in line with the College policy.
- To ensure pupils are assessed as per College policy, using RoK tests and summative assessments to adapt and support pupil learning. Using our simple marking strategy to avoid overmarking and ensure that students take the lead on improving their own work.
- To report to parents on pupil progress as per College policy.
- To promote DT in the College and contribute to extra-curricular and enrichment activities in DT, including trips and visits.

The post holder will have a shared responsibility for the safeguarding of all children and young people. The post holder also has an implicit duty to promote the welfare of all children and young people.

Where the post holder has a budgetary responsibility, it is a requirement of the role to work within the school's financial regulations. This will involve completing monthly monitoring reports and where necessary liaison with the Business & Resources Manager.

CMAT is committed to safeguarding and promoting the welfare of children and young people and expects all staff and volunteers to share in this commitment. All staff will be subject to an enhanced check with the DBS.

Person Specification: Main Scale Teacher

| Skills, attributes and experience | Essential or Desirable | Assessed through |
|--|------------------------|------------------|
| Qualifications and experience | | |
| Qualified teacher with the relevant qualifications | E | A |
| Has experience of working in a school | E | A |
| Ability to teach key stages 3, 4 and 5 | E | A |
| Kind | | |
| Shows evidence of ability to be an effective form tutor | E | A/I |
| Willingness to go above and beyond | E | A/I |
| Commitment to work hard but can manage their own workload and is mindful of others' workload | E | I |
| Is committed to working with all children | E | A/I |
| Can sustain and grow positive relationships with Parents, students and all staff | E | I |
| Curiosity | | |
| Is passionate about their subject | E | O/I |
| Is an excellent practitioner who is open to change and personal improvement | E | O/I |
| Has undertaken recent CPD in areas relevant to this post and can elucidate how this has changed their practice | D | A/I |
| Is up to date on current educational thinking in their subject and beyond | E | A/I |
| Is committed to inclusion – understands that differentiation is not dumbing down but about scaffolding access | E | O/I |
| Knows how their subject fits with other subjects | D | O / I |
| Hardworking | | |
| Can plan and teach excellent lessons | E | I |
| Understands what their subject content requirements are and can develop Schemes of Learning | E | A / I |
| Has considered what assessment and homework might look like | D | A / I |
| Is prepared to contribute to enrichment activities in their subject | E | A / I |
| Other personal characteristics | | |
| Suitability to work with children and young people | E | A/I/O |
| Personable and well presented. | E | I/O |

| |
|-----------------|
| A = application |
| I = interview |
| O = observation |

How to Apply

Please submit an application form via TES - www.tes.com/jobs/employer/northstowe-secondary-college-1218811 or mynewterm - <https://www.mynewterm.com/school/Northstowe-Secondary-School/135739>
Please note, we cannot accept CVs.

Closing Date:

Friday 28th January 2022 (by 9am). We are unable to accept applications after this time.

Interviews:

Are due to be held on Thursday 3rd February 2022.

Applying:

For any questions about the process of applying please contact: Sarah Wakerley, HR Officer on recruitment@northstowesc.org

NSC is committed to safeguarding and promoting the welfare of children and young people and expects all staff and volunteers to share this commitment. This means that the post holder will have a shared responsibility for the safeguarding of all children and young people. The post holder also has an implicit duty to promote the welfare of all children and young people.

All staff will be subject to an enhanced check with the Disclosure & Barring Service (DBS).