



Wheatley Park School

Working in the Mathematics Team

A professional team, motivated, open to new ideas and constantly learning.

- We talk about learning, with each other and with our support staff as well as with colleagues from other teams, especially Science.
- We use our meeting time for professional learning so that we all progress professionally.
- We use our own software for online marking and feedback.
- We are very involved in ITT, in partnership with the University of Oxford and OTSA.
- We have a track record of real success including 2017 results of 56% 5+ at GCSE, significantly positive Pupil Premium outcomes and A2 grades in the top 10% nationally.
- Our most recent A2 Further Maths outcomes achieved an ALPS score of 2.

Balance between support and autonomy.

- Our schemes of work identify key learning outcomes and suggest rich activities, but leave teachers the flexibility to plan their own lessons.
- We are open to professional learning and frequently engage in developmental opportunities including peer observations and videoing our own lessons.
- You will have opportunities to teach in all key stages, depending on your interests.
- Your ideas and contributions will be sought and valued.

A well resourced environment for developing your practice.

- Your own classroom in a modern, purpose-built Maths suite.
- A class set of bookable Chromebook laptops.
- Textbooks for all Key Stages including the new GCSE course.
- A team room and study base, with nearby access to the Maths & Science SEN hub.

Good professional learning, whatever your career stage

- Excellent support for NQTs, as well as an NQT+1 programme.
- Personalised INSET groups depending on your developmental interests.
- CPD opportunities including the annual OCL Mathematics Conference.
- We have supported several colleagues with Masters-level qualifications in recent years.

A team of warm, friendly and generous professional companions.

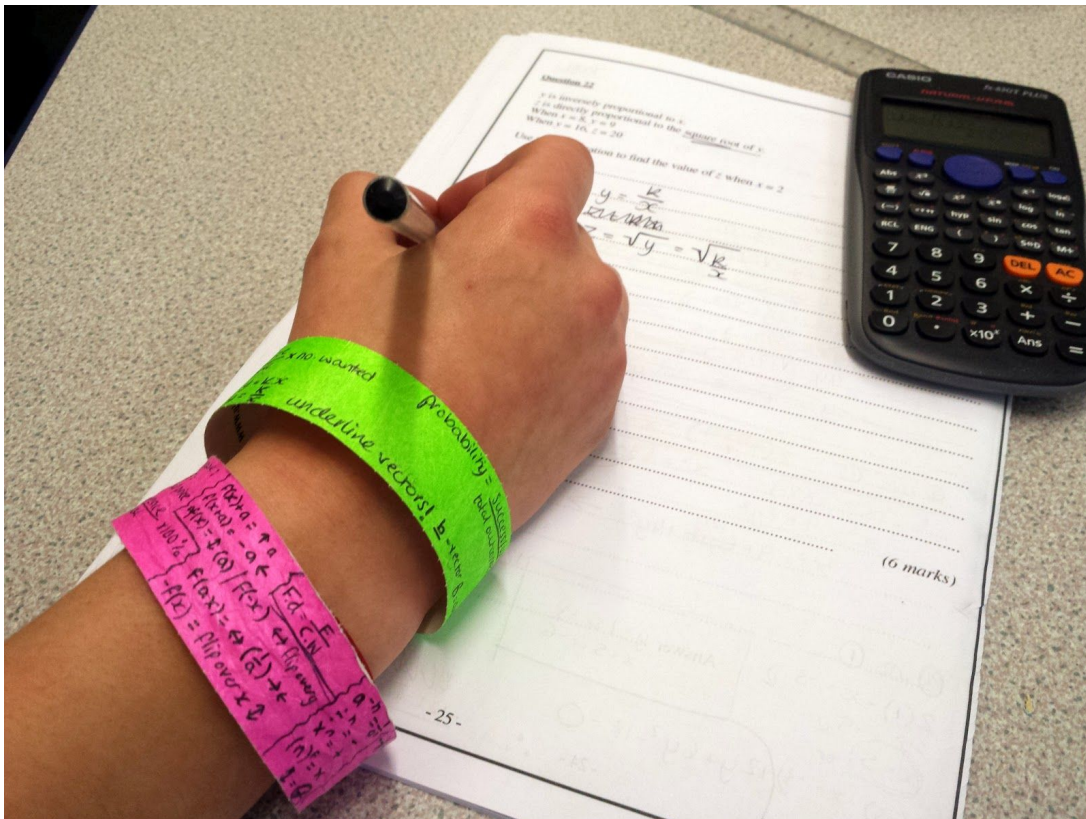
- We look out for each other and are often in each other's classrooms.
- We enjoy social time together several times each term.

Students who are diverse, curious and keen to learn.

- Maths has a reputation for strong results and a high uptake at A Level.
- Large numbers of students are involved in the UKMT Maths Challenges.
- We run an annual Year 7 Maths trip to explore the mathematics of Blenheim Palace.

"The Mathematics department has been incredibly supportive during my NQT year and its forward thinking nature has increased my interest further in learning and teaching."

- Maths teacher



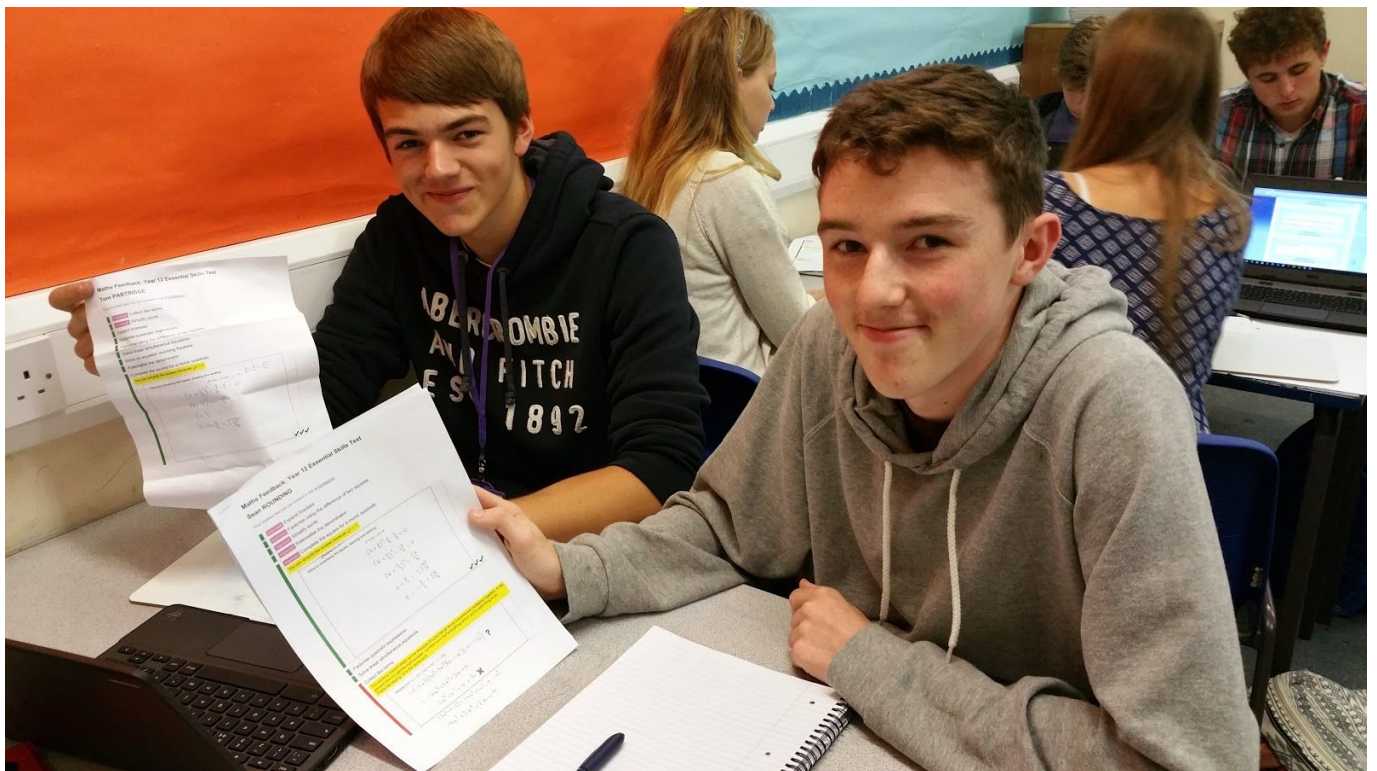
Creative teaching, e.g. use of revision wristbands seen here



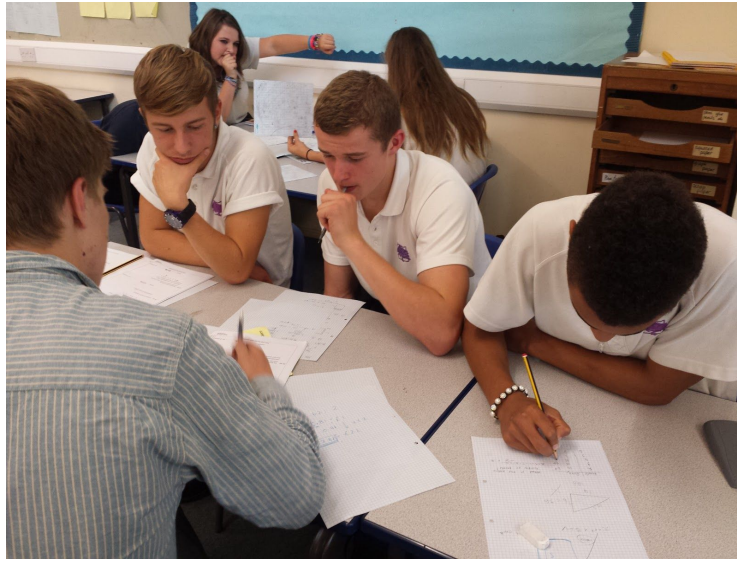
Year 7 students measure the circumference of a tree at our annual Blenheim Palace trip



A Year 13 student joins his Maths lesson through video link while on a break during his (successful) interview at the University of Oxford!



Students act on their detailed test feedback which is generated through online marking



Year 11 students engage with an after-school revision class



Key Stage 3 students write on their tables to collaborate and share ideas



Year 11 learners make the most of a Saturday revision seminar which we run annually at Queen's College, Oxford