



Information for Candidates

General Information about Kuala Lumpur and Malaysia

Malaysia is made up of two distinct regions of East and West Malaysia with the modern city of Kuala Lumpur as its capital. The nation comprises a confederation of 13 states and the two Federal Territories of Kuala Lumpur and Labuan.

Malaysia is a constitutional monarchy headed by a Yang Dipertuan Agong (King) and practices parliamentary democracy governed by a Cabinet and headed by a Prime Minister.

Political and economic stability has been a primary consideration of the government of the day which is why Malaysia has enjoyed a stable political and economic climate for decades. Malaysia has had a good record of maintaining law and stability and is one of the safest countries to live or work in, in this part of the world.

Geographically, Malaysia is situated north of the Equator and temperatures range from the mid-20s to mid-30s° C nearly all year. The humidity level also remains high year-round but most people acclimatise quickly and do not find the heat a problem. Whilst better known for its production of palm oil, rubber, tin and timber, over 50% of GNP is now from the manufacturing sector as the country becomes increasingly industrialised and reliant on manufacturing and the tertiary sector, as opposed to the traditional agricultural base.

The Malaysian Ringgit is the standard unit of currency.
(October 2018: RM5.4 = £1 - subject to some fluctuation).

The country's religion is predominantly Islam, but there are strong Christian, Hindu and Chinese traditions in many communities. The population is mainly Malay, with significant Chinese and Tamil minorities. Freedom of worship is practised. As a result, it is common to see temples, mosques and churches within the same area.

The National Language is Bahasa Malaysia (Malay) but English is very widely spoken and is taught in schools.

Culture

It is important to be able to develop a cultural sensitivity to the country. While this is a modern, go-ahead place, traditional values predominate in all local communities. There is a terrific respect for family and family values. People avoid confrontation and shows of negative outward emotions such as anger. People will seek to come to terms with differing points of view, which then become synthesised rather than confront each other directly. Attitudes towards sexual relationships are less liberal than you would find in a western country. The use and sale of illegal drugs provokes a severe response from the authorities. There are certain customs you will learn if you come to live in Malaysia and in general restrained and polite behaviour is valued by all sections of the community. This is something

that needs to be respected and reflected in our own behaviour as guests here. Also, as guests in this country, expatriates are required not to take part in any local or national political activity.

Living in Malaysia

Overall, the cost of living is cheaper in Malaysia than in the U.K. The cost of general goods and services such as petrol, domestic help, taxi fares, hotel meals and hotel accommodation is considerably less than in the U.K. Supermarket prices are broadly equivalent to the UK. Local food products are very cheap and of good quality, but as is understandable imported items such as dairy produce are more expensive. Many British and Australian products are available in the supermarkets. Alcohol is quite heavily taxed and is more expensive than the U.K., in general.

New and second-hand cars are relatively expensive compared to the UK, but hold their price much better, and resale is relatively easy. Accommodation is also less expensive, and the rental allowance provided will, after tax, cover the cost of a comfortable apartment in a condominium with pool and other facilities, or a link (terraced) house. Running a car is relatively inexpensive with petrol at a standard RM 2.05 per litre, and garage services are very cheap. This price is subject to change based on the monthly announcement by the Malaysian government. Driving is on the left-hand side of the road and the quality of major freeways and highways is very good.

Kuala Lumpur

Over the last 10 years KL has been transformed into a modern thriving metropolis with spectacular buildings like the [Petronas Towers](#). Unlike many Asian cities, KL still has many beautiful old buildings from a bygone era, green areas and friendly charm.

The city environment is a unique blend of old colonial architecture, Asian culture and new development where Chinese tea houses, Indian shops and Malay hawker stalls line streets next to world-class hotels and super hi-rise office blocks. Malaysia/KL is a gourmet paradise with its exciting blend of Chinese, Malay, Indian and Western cuisine. KL's extensive [shopping](#) malls, [markets](#) and local shops will definitely unleash the hidden shopper in everyone!

Leading coffeehouse chains such as Starbucks and Coffee Bean have a large number of sidewalk and indoor outlets. Other popular UK based chains are also widely represented in KL, including Marks and Spencers, Body Shop, Zara, Next, Top Shop, Tesco and a huge IKEA!

You can experience the rich culture of historic Kuala Lumpur through its art galleries, [diverse architecture](#), craft centres and [cultural attractions](#). Go sightseeing and view KL from the top of KL Tower or take the kids to one of several [theme parks](#) around the city. Take time out for [golf](#), or explore the [national parks](#) near the city.

KL is a very family orientated city with plenty of attractions to keep the kids happy. There are several theme parks around the city outskirts which provide accommodation as well as entertainment areas.

KL has a remarkably varied nightlife. Music clubs, Karaoke lounges, jazz bars, pubs, discos, dance clubs, wine bars and funky restaurants are all over the city, catering to an affluent and sophisticated young local crowd as well as visitors.

Opportunities for travel are superb, with Singapore and Bangkok just a short and affordable flight away. Internal flights to the East Coast and to Borneo are very affordable, whilst travel to Hong Kong and Australia is also very reasonably priced. Malaysia itself has a fascinating variety of environments, from the cool Cameron Highlands with mountains, waterfalls and tea plantations, to [coral Islands](#) and coastal resorts, the National Park [Taman Negara](#) with its jungle treks and white-water rafting and historic towns such as [Malacca](#). Many of these are accessible by car for weekend trips.

For those who love to travel, Kuala Lumpur acts as a gateway to destinations all over South East Asia. It is also the base for Air Asia, Malaysia's low-cost airline with cheap flights to over 85 destinations in and around Asia.

Medical Facilities

The country has a very efficient health system where medical services are provided at nominal cost. Private doctors, clinics and also hospitals of international standards are easily obtainable at very reasonable cost. Malaysia is also becoming a centre for medical facilities and medical tourism in the region. Most doctors and dentists are U.K, U.S, Australian or New Zealand trained.

Malaysia's medical services are among the best in the region. To seek medical attention, however, foreign visitors have to visit private hospitals or clinics. Private clinics and hospitals are abundant around the country.

They can be found in the shopping malls, or among the rows of shop houses, business complexes, nearby residential areas and others.

A common question newly arrived expats tend to ask is about drinking water. Tap water is safe to drink in major towns or cities. In rural villages it is recommended to drink only bottled water. However, most Malaysians in towns and villages make it a habit to boil their water. Mineral or bottled water is available everywhere.

A high standard of food hygiene is prevalent in Malaysia and those involved in food preparation are subjected to Health Ministry controls. Food handlers undergo regular screening against diseases.

However, visitors are encouraged to patronise only clean stalls and avoid places that do not observe proper hygiene. It is also advisable to eat freshly prepared food or hot, steaming food.

Medical Insurance for Teachers

All our teaching staff are covered by the BUPA International or any other insurance company appointed by the school.

Some of the Established Private Hospitals

- Prince Court Medical Centre, website: www.princecourt.com
- Pantai Medical Centre, website : www.pantai.com.my
- Sime Darby Medical Centre, website : www.simedarbyhealthcare.com
- Gleneagles Intan Medical Centre, Kuala Lumpur, website : www.gleneagleskl.com.my

Useful Websites

Here are a few useful websites about K.L and Malaysia. Check out the web for further updates!

- <http://www.visionkl.com/>
- <http://www.kualalumpur.com/>
- <http://travelmalaysiaguide.com/>
- <http://www.expatkl.com/>
- <http://www.lonelyplanet.com/malaysia/kuala-lumpur>



General Information about The Alice Smith School

The Alice Smith School was founded in 1946 and is open to students of all nationalities provided they can access the curriculum in the medium of English. A caring, not-for-profit, student-centred environment, the Alice Smith School is one of the oldest and most respected international schools in the world. It has gained a reputation for excellence for providing every student with an outstanding British education, preparing them for a successful international future.

OUR

Mission

To provide an outstanding British education
for a successful international future

Vision

To lead the pursuit of excellence in learning
through nurturing, inspiring and enriching
the lives and characters of young people

We believe that through generosity of time
and our care and attention to every individual,
we find a way to bring out the best in all people
and create an enduring sense of belonging
to something very special



The School is accommodated on two sites: The Primary Campus at Jalan Bellamy (approximately 800 students) is situated in a pleasant wooded area adjacent to the old Royal Palace. The facilities include two libraries, learning technology suites, a double storey Gymnasium, a 25m swimming pool, music rooms, hall, all-weather artificial turf field and purpose built adventure play areas. Art, Music, Modern Foreign Languages (French, Bahasa and Mandarin) and Physical Education are specialist taught and pupils enjoy well-resourced classrooms staffed by Year teams of Teachers and Teachers Assistants. The Jubilee Centre comprises of a new Dining Hall and One Stop Centre for parents, with admissions, accounts and a uniform shop.

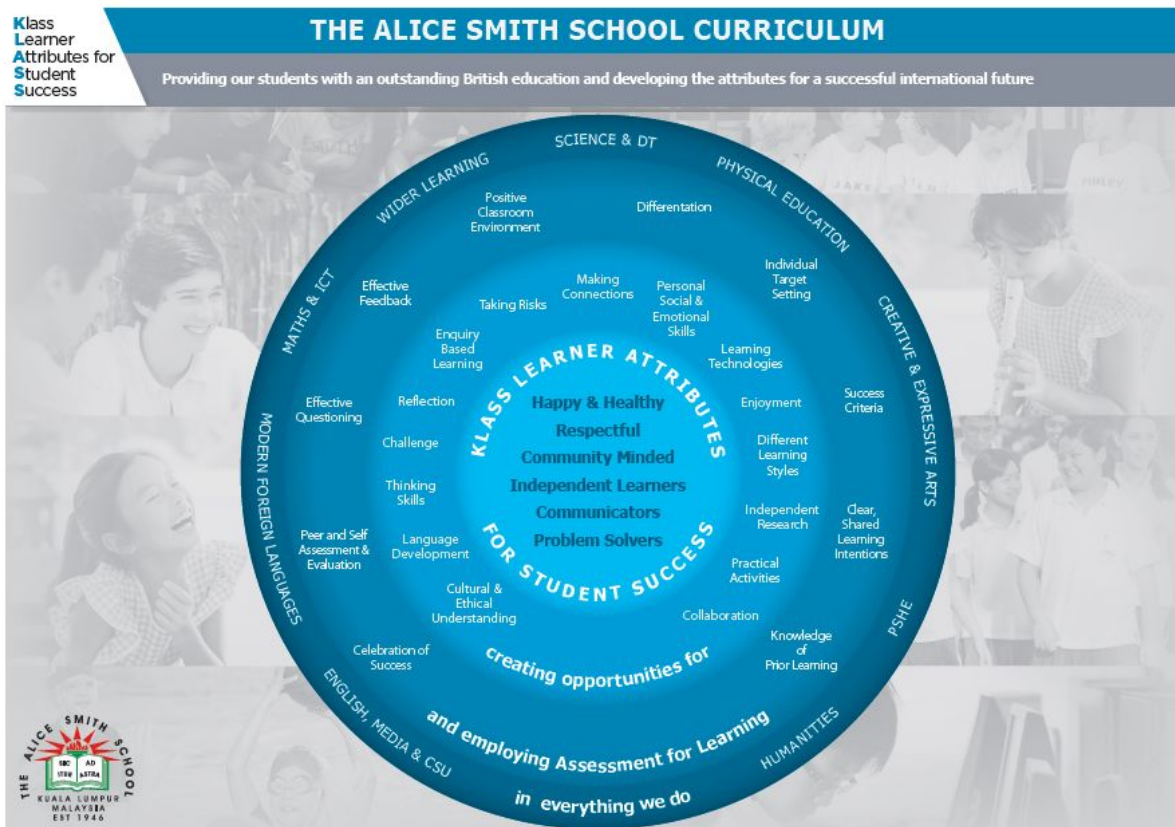
The Secondary Campus at Equine Park (approximately 750 students) is a beautiful purpose built campus on 25 acres of land with excellent facilities including an IAAF certified track and field sports complex, Olympic specification 50m swimming pool, large sports fields, an expansive air-conditioned indoor sports hall, gymnasium and fitness areas, an outdoor climbing and bouldering wall, newly renovated and expanded teaching and learning areas for English, Languages, Mathematics and Science, purpose built specialist learning areas for Art, Music and DT, extensive ICT resources and an world class library.

For over seven decades, the Alice Smith School has catered to the needs of children from the local and international community in Malaysia. Building on the English National Curriculum, the school's framework for teaching and learning emphasises transferable skills and knowledge across all areas of the curriculum. Our students are encouraged to apply their knowledge widely, challenge and extend their interests and skills and seek new areas of understanding. Breadth, depth and balance is sought between academic performance and personal growth and development. (I)GCSE courses are offered in Year 10 and 11 and A Levels in Year 12 and 13, with additional rigour and challenge accessible through areas such as the Extended Project Qualification (EPQ).

The School offers a wide variety of sporting and cultural extra-curricular activities and a broad range of residential expeditions and trips for all students. With the school's emphasis on providing a broad and balanced curriculum and with a strong focus on the core subjects of English, Mathematics and Science, students are well prepared for placement into secondary and tertiary institutions around the world. The enriched extra-curricular, expedition and wider learning programme is extensive and includes the Duke of Edinburgh Award Scheme.

We believe in developing essential knowledge, skills and understanding to help our students thrive and achieve their full potential.

KLASS Learner Attributes For Student Success



Confident, creative, critical and compassionate learners

Our students' outstanding academic achievements and progress at the Alice Smith School are achieved through a combination of factors. We place a great deal of importance in encouraging students to be successful learners, confident individuals and responsible citizens. We support them to develop personal values, skills and ways of working with others which are increasingly important to their success in the global workplace and as a global citizen.

Students are encouraged to lead happy and healthy lifestyles, be respectful and community minded in their actions and be successful communicators, problem solvers and independent learners. Supporting and caring about our local community is a significant part of school life which involves all students and where many can gain hands-on experience working with those who are less fortunate than themselves.

Master Plan for Facilities Development

The Alice Smith School is continuing with some very exciting developments of its facilities on both campuses, which illustrates our pro-activity and commitment to continue to be an outstanding school both now and in the future.



Good facilities are an integral component of an Alice Smith education. By investing in good facilities, we help to create the right environment for current and future students to receive a high quality holistic education and which attracts and retains an excellent team of teachers.

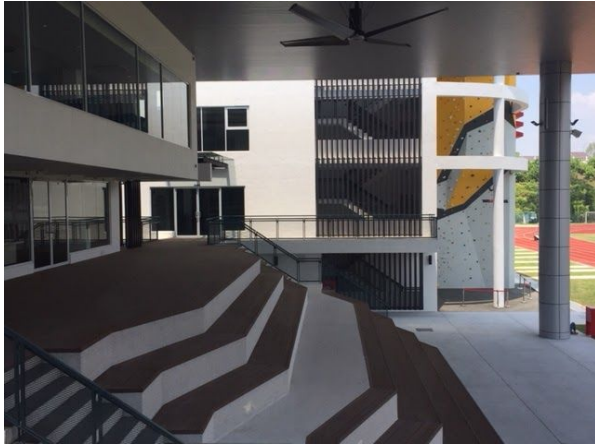
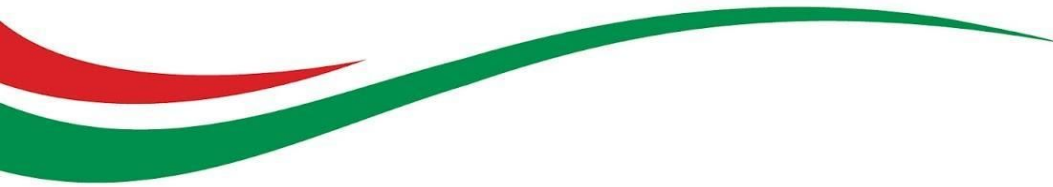


Teaching and learning requirements are evolving in line with a rapidly changing global workplace and as such a school's facilities and environment also need to keep pace with these changes. With the support of an education planner, the Alice Smith School has devised a comprehensive master plan which will ensure that the facilities we have in place for the 21st century can deliver our missions of an outstanding British education for a successful international future.



The latest exciting phase of our facilities master plan opened in August 2018, with extensions and refurbishment to the Humanities, Library & Sixth Form and Indoor Sports blocks at the secondary campus.





This commitment to invest in facilities supports our vision for the future for Alice Smith to be a world class school environment for learning excellence for current and future generations in the 21st century.



IAAF Certified Track and Field facilities opened in September 2016



Jubilee Centre at the primary campus



Interactive display wall at the primary campus