

KEY STAGE 2 CLASS TEACHER
REIGATE GRAMMAR SCHOOL RIYADH
INFORMATION FOR CANDIDATES

Role commences August 2025





INTRODUCTION

Thank you for your interest in joining Reigate Grammar School Riyadh (RGSR).

This is an outstanding opportunity to assume a teaching role within our school, as well as to join our global family, with schools in the UK, China, and South East Asia.

Successful candidates will play an important role in the development and growth of RGSR as well as the wider group of RGS schools.

Located towards the East of Riyadh, RGSR opened in September 2022 and offers a British curriculum based on the expertise from Reigate Grammar School UK (RGS-UK). Links between RGS-UK and RGSR are strong and the two schools share the same ethos, teaching and learning philosophy, and student welfare model.

We welcome all staff who genuinely care about students, have the ability to inspire them on their learning journey, and who want to be involved in all aspects of school life.

We look forward to hearing from you.





REIGATE GRAMMAR SCHOOL UK

Reigate Grammar School (RGS-UK) was founded by Alderman Henry Smith in 1675. For over 345 years, young people have been educated on the same site, in the heart of Reigate, a historic market town 15 miles south of the City of London. RGS is regarded as one of the leading co-educational schools in the UK offering the very best academic education with equal prominence placed on the arts, sport and a rich extra-curricular programme.

RGS-UK was awarded School of the Year by the Tatler in 2020 -21. In 2019 it received the prestigious UK Independent School of the Year award for Wellbeing and Pastoral Care, and in 2021 RGS was named School of the Year at the UK Social Mobility Awards. The school is a prominent HMC school and Headmaster, Shaun Fenton OBE, was the Chairman of HMC in 2018.

The first line of the school's most recent ISI report asserts that 'the quality of the students' achievements and learning is exceptional'. RGS' approach to teaching and learning melds expert subject knowledge with a modern, innovative approach to pedagogy with a judicious use of technology. Inspirational and personalised teaching and learning is at the centre of the vision and requires expert teachers. The school is one of a small number of world-class schools to have been a global pioneer in High Performance Learning (HPL), focusing on the development of global citizens, advanced performers and enterprising learners.

RGS-UK caters for over 1600 students in three schools from ages 2 to 18. Reigate Grammar School (11 - 18) the senior section, with Reigate St. Mary's and Reigate Chinthurst the junior schools.

"Central to our ethos is the belief that every child who receives a Reigate Grammar School education is on a journey with a noble purpose and will go on to make the world a better place"





REIGATE GRAMMAR SCHOOL INTERNATIONAL

The Board of RGS has committed to the creation of a family of schools across the world and Reigate Grammar School International (RGSi) is the school's commercial arm that is responsible for working with our partners overseas.

Reigate Grammar School International (RGSi) was established in 2016 as a 100% owned subsidiary of Reigate Grammar School with a strategic vision to establish international schools and to provide education consultancy services around the world under licence to Reigate Grammar School. This includes sharing its ethos; student welfare and pastoral model; teaching and learning philosophy; curriculum design expertise and operational systems.

By developing international connections, RGS aims to establish cultural and learning links to provide visit and exchange opportunities for students and staff. Developing international links and perspectives opens up cultural and learning opportunities cross continents.

RGSi is currently firmly established in China, South East Asia and Middle East.





REIGATE GRAMMAR SCHOOL RIYADH

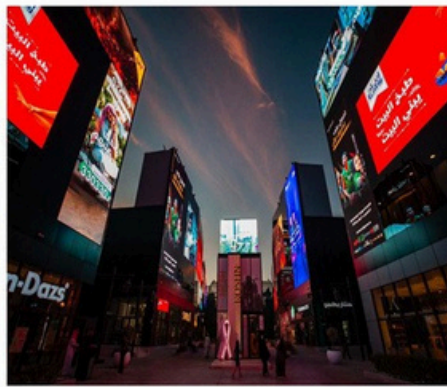
Reigate Grammar School Riyadh (RGSR) is a British International School educating approximately 1,000 students aged 3 -18. Established in 2022, it is the first of a series of schools in the Kingdom of Saudi Arabia to be opened in partnership between Reigate Grammar School (RGS) and ADECO.

RGSR is one of a small number of schools to operate under the Royal Commission for Riyadh City's (RCRC) International Schools Programme. The school serves both the international and local communities and currently has students from over 50 nationalities. Students follow the EYFS and National Curriculum for England from Nursery to KS3, before studying towards iGCSE and A-Level qualifications in Key Stage 4 and 5 respectively.

“The quality of education at RGS ensures that doors of opportunity are open for our students, and that they are equipped academically and emotionally to make the very most of those life chances. Students and staff at RGS Riyadh will join an interconnected global community, where the primary focus is happiness, wellbeing, and academic success.”

Mr. Shaun Fenton OBE, Headmaster of Reigate Grammar School UK





LIVING IN RIYADH

Riyadh is the capital and largest city in the Kingdom of Saudi Arabia (KSA). Once a small walled city, today it is home to more than 7.5 million people and is one of the fastest developing cities in the world.

The city skyline is dominated by skyscrapers, including the Kingdom Tower with its iconic sky bridge which provides stunning views of the city below. New districts are being developed all the time and there is an ever-growing number of shopping malls selling well known brands; cinemas; entertainment and leisure facilities; and restaurants serving a wide range of western and local cuisines to suit all tastes. With a lively cafe culture, as well as a burgeoning art and music scene, Riyadh has become one of the Middle East's most alluring cities, attracting professionals and families from the region and the world.

High profile sporting fixtures regularly take place in the city and well-known musicians such as Imagine Dragons, Bruno Mars, Andrea Bocelli, David Guetta and Post Malone have all performed in the past six months. The city offers a host of green spaces to enjoy, as well as a wide range of sporting activities including golf, tennis, cycling, running and horse riding. Within easy reach there are UNESCO World Heritage Sites to explore, Dune Bashing to enjoy, and trekking opportunities to 'The Edge of the World.'

Riyadh is certainly a city that is seeing significant change and any perceptions of it being a closed society are outdated. Visitors will find a welcoming and multicultural environment with all the conveniences expected of a world city. Women no longer have to wear abayas or have their head covered and they are free to travel around the city unaccompanied.

Beyond Riyadh, destinations such as Jeddah and the Red Sea are just a short flight away. There you can visit beautiful coral reefs, enjoy white sand beaches and take part in some of the best diving in the world.

Those who like to spend their time above sea level should head to Azir in the South for breath-taking mountain scenery, a plethora of hiking trails and cool temperatures year-round. The AlUla Valley provides an unforgettable desert experience and should be on everyone's bucket list! As KSA's first World Heritage Site, its rock formations are an iconic symbol of the unexplored beauty of the country.

For those wishing to venture further afield, Riyadh International Airport serves as a regional hub and offers regular flights to Europe, The Far East and beyond.



HOW TO APPLY

The closing date for applications is 5pm (GMT) on 23rd Feb, 2025. Applications should be made electronically via the TES portal.

As part of the process candidates should submit (as attachments on the TES portal application form):

A full CV which includes:

- Your entire work history.
- A recent photograph.
- Details of at least two professional referees from your most recent position(s).

A covering letter outlining:

- Your reasons for applying.
- Reasons for leaving your current role.
- Relevant professional experience that you feel is aligned to the needs of the role.
- Your personal educational philosophy.

Applications will be reviewed on a rolling process with interviews taking place Online in Feb/Mar 2025.

We reserve the right to close a position once we have received sufficient applications to form a short-list. Early application is therefore encouraged. RGSR is committed to ensuring that the privacy of applicants and employees is protected.

Safeguarding

RGSR is committed to safeguarding and promoting the welfare of children and young people and expects all staff to share this commitment. All applicants should read the school's Safeguarding policy, which is available on our website, and are required to declare any criminal convictions or cautions, or disciplinary proceedings related to young people.

Applicants must be willing to undergo child protection screening appropriate to the post, including checks with past employers and the Disclosure and Barring Services.

Equal Opportunities

RGSR is an equal opportunities employer and welcomes applications from appropriately qualified persons regardless of gender, marital status, sexual orientation, race, ethnic origin, colour, nationality, religion, disability or age. Candidates will be assessed against relevant criteria only (i.e. skills, qualifications, abilities, experience) in selection and recruitment.



Key Stage 2 Class Teacher

Reports to: Head of Preparatory

1. Ensure excellent pastoral care and wellbeing for a class of children.
2. Plan lessons and sequences of lessons which meet the learning needs of our students.
3. Maximise student outcomes through excellent Teaching & Learning.
4. Develop robust formative and summative assessment strategies which promote student progress.
5. Commit to curriculum development and innovation.
6. Engage with the Professional Learning & Development offered.
7. Commit to developing a high-quality teaching practice in which blends the best of British and International philosophies.
8. Maintain a well organised and stimulating learning environment.
9. Use learning technologies to enhance learning.
10. Provide clear and constructive feedback to parents and caregivers, working in partnership with them for the benefit of the students.
11. Ensure effective administration of classroom systems and procedures.
12. Ensure that school resources are used effectively and efficiently for the benefit of the students.
13. Utilise and work with school policies as well as making an active contribution to their construction.
14. Collaborate with members of the school community to build a team environment that supports students' learning.
15. To attend all meetings and INSET as required, attending and contributing to curriculum planning meetings.
16. To maintain close links and regular contact with any appropriate professional bodies.
17. To teach a set timetabled number of periods per week as directed by the Head of Preparatory or Principal.
18. Any other tasks as directed by the Head of Preparatory or Principal.

