



Bosvena
School



Special
Partnership
Trust



Hello & Welcome to the Special Partnership Trust

I'm delighted to extend a warm and heartfelt welcome to each and every one of you as the CEO of the Special Partnership Trust. It's an honour to be a part of this extraordinary educational trust and to be part of a team who are redefining Special Educational Needs (SEN) in the UK.

We endeavour to always continue raising the bar and pushing the boundaries of what SEN schools can be. We're driven by a relentless pursuit of excellence, a commitment to innovation, and a belief that every young person deserves the best possible education and support to thrive in a world that's full of both challenges and opportunities.

We refuse to settle for ordinary; instead, we aspire to be the best in everything we do and to reach the extraordinary. Our mission is clear; to be a force for good in SEN and make a positive difference in people's lives. We challenge conventions, pioneer excellence, and work tirelessly to create better tomorrows for our young people and their families. We believe in the power of collaboration, co-operation, and creativity. Our ethos is rooted in inclusivity, empowerment, and transparency, which forms the foundation of our work.

We understand that each young person is unique, and we are dedicated to providing them with the highest quality education, access to the best opportunities, and a strong sense of self-worth and purpose. Our curriculum goes beyond school life; it focusses on living as well as learning, nurturing resilience and independence.

We dare to be different, and we have the courage to stand by our convictions. We are committed to drawing the best out of everything and everyone in our community. We care deeply, and we are driven by a genuine desire to improve the lives and experiences of our learners.

Our vision is for every single young person to have access to the best education, delivered in the best possible environment, enabling them to thrive, succeed, and flourish, regardless of the circumstances they face. Our goal is to prepare young people for the next step, whatever that may be, by fostering innovation, excitement, and opportunity.

Our values are the cornerstone of everything we do. We are ambitious, aspirational, invested, purposeful, genuine, inclusive, energetic, and specialist. These values guide us as we continually strive to improve our offering and change the face of SEN in the UK.

I'm truly excited to be working alongside our brilliant staff, parents, and, most importantly, our incredible young people. Together, we will create a supportive and enriching environment where our learners feel safe, supported, and happy, as they embark on a journey to become successful, achieving, fulfilled adults. It's a huge privilege to be a part of this remarkable community, and I look forward to continuing to achieve great things as, together, we endeavour every day to make a profound impact on the lives of those we serve.

Guy Chappell
CEO The Special Partnership Trust

The Special Partnership Trust Difference

Pioneering excellence

We work tirelessly to create better tomorrows for our young people and their families.

Opening eyes. Broadening horizons

Our goal is to prepare young people for the next step, whatever that step may be.

Putting young people first

Inspiring young people to be the very best versions of themselves.

Collaboration. Co-operation. Creativity

An ambitious, specialist curriculum focused on learning and living.

Dare to be different

We strive every single day to draw the best out of everything and everyone in our community.

Stand out from the crowd

Opening up life-changing opportunities for young people.



Introduction

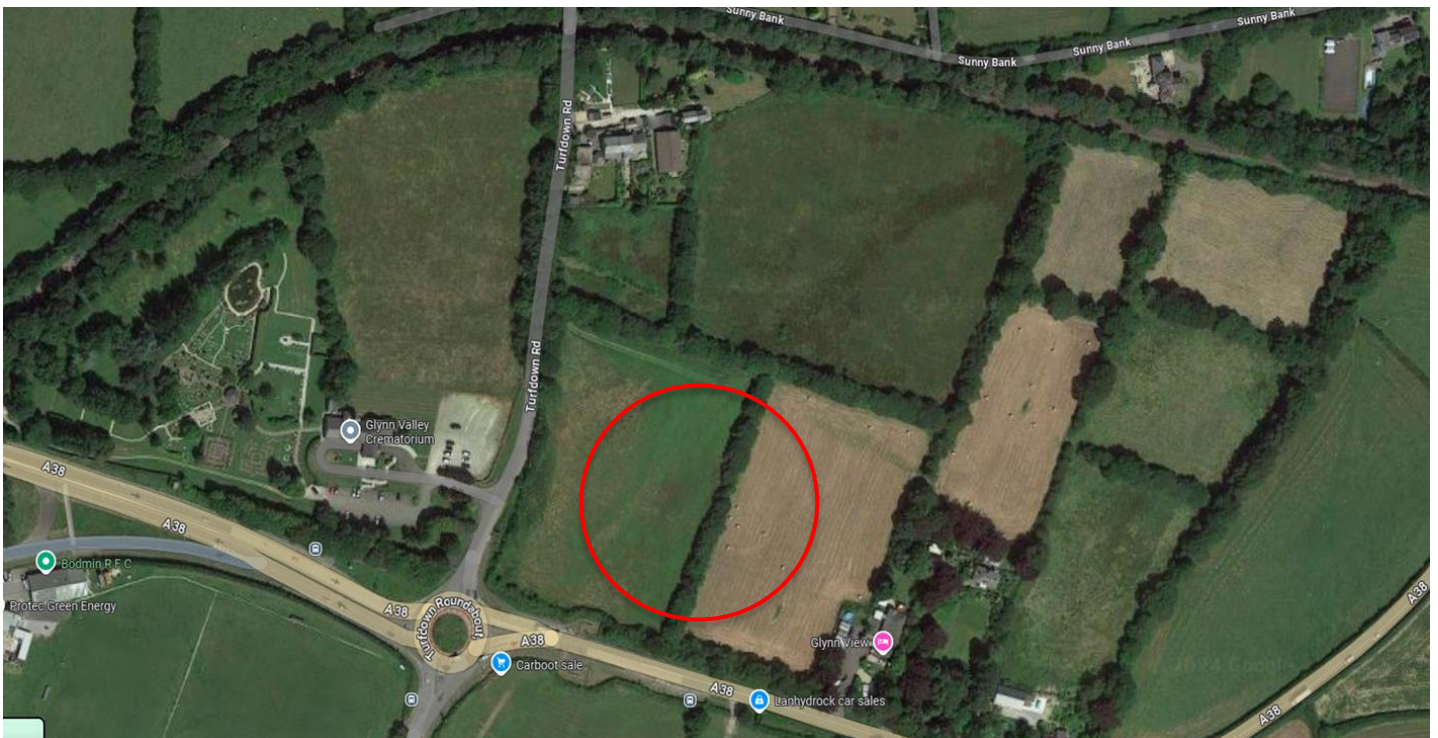
Bosvena School will be a school for pupils with SEMH identified as their primary need in their EHC Plans. It will be an integral part of The Special Partnership Trust and the local community.

Bosvena School will be the only SEMH school within Cornwall providing a continuum of specialist provision currently unavailable within the county; this provides an opportunity to develop a unique and tailor-made curriculum for this cohort of learners.

The ambition to transform the life opportunities of young people with SEMH difficulties, who may have had disrupted educational opportunities, is the core purpose of this provision.

The outcome will be to provide pupils with the support they need to learn, thrive and succeed in their education / re-integrate back into mainstream provision.

Location



The school will be situated in Bodmin, Cornwall with easy access to the A30/A38

School Address: Bosvena School, Turfdown Road Glynn, Bodmin, PL30 4AP

Offer

The school will cater for pupils who are within KS1 – 4 (years 1 to 11), serving the community in Cornwall. At capacity it will provide places for 65 pupils who will have struggled to access or fully and successfully participate in mainstream provision as their identified need can act as a barrier in their interactions with others and to their learning (engagement).

The Special Partnership Trusts intent is to provide an outstanding special school for pupils with SEMH needs; a school which celebrates neurodiversity by accepting, respecting, recognising and responding accordingly to developmental difference shaping pupil's educational offer to inform/improve outcomes.

Quality of the offer (curriculum) and the chosen styles of Pedagogy will reflect the particular needs of pupils with EHCP which specifies SEMH as a primary need which is supported through a dynamic Trust.

Through the ongoing research of successful evidenced practices, pedagogies and SEMH strategies, a unique educational/personalised school offer can be tailored to meet pupils' needs. Bosvena School will be a research focussed school, innovative and aspirational in its practice where the development of pupils' SEMH skills is at the centre of our work.

The provision sits well within the current The Special Partnership Trust (SPT) offer and aligns with the Trust vision and ethos.

Capacity

Year one - 2025-2026

There will be capacity for an initial cohort of 38 pupils accommodated within four groups, two KS1/2 groups and two KS3/4 groups.

This provision map will be flexible in meeting the specific needs of those pupils at entry. The appointment of a cover supervisor is to support staff wellbeing in recognition of the demands of working within SEN special schools.

Year two - 2026-2027

Capacity will increase to a PAN of 60 pupils across an increasingly broad age range which will be grouped relative to need, modelled on seven groups, three KS1/2 groups and four KS3/4 group depending on commissioned admission.

Year three - 2027-2028

The school will reach capacity of 65, with seven teaching groups, three KS1/2 groups, four KS3/4 group.

Admissions

Admissions for a Special School place are done in two different ways:

- Via an Education, Health and Care (EHC) Statutory Assessment
- Through information from an Annual Review Meeting

The Statutory Special Educational Needs and Disabilities Panel make the decision about allocation of these places.

<https://www.cornwall.gov.uk/schools-and-education/special-educational-needs/sen-information-and-resources/admissions-for-an-area-resource-base-arb-or-special-school-place/>

Artist's Impression – Aerial View



Front Elevation



Top of Field



Construction Site



Elevations – North & East



Special
Partnership
Trust



Proposed North Elevation
2 - 100



Proposed East Elevation
1 : 100

IS	PSA	12/08/04	Updated team details, designed MBS equipment diagram
IS	PSA	04/09/04	Phase IV Start
IS	PSA	26/02/05	Issue for reduction with engine, noise and vibration, updated/revised fuel tank, pump, engine, tank details, accessories and fixtures
IS	PSA	12/06/05	Finalisation - Following planning approval
PL	PSA	12/06/05	Planning issue
PL	PSA	05/09/05	Planning issue
PL	PSA	08/09/05	Goal Planning issue for Revision
OS	PSA	07/10/05	OS/PSA/PSA



**+BOWMER
KIRKLAND**

CONFIDENTIAL Page 1 of 1

STRIDE TREGLOWN

Bosvena SEND School

Proposed Elevations - North and East

Internet Publishing

53 : SUITABLE FOR REVIEW & COMMENT

Sample ID	Lot	Chemical	Conc.	Vol.
PS	16/08/24	CR	1 : 100	1

CONTRACT NUMBER: 16/08/24 (16/08/24)

FS0887-STL-XX-ZZ-DR-A-2021	PO
----------------------------	----