

Welcome to **LANGDON PARK SIXTH FORM**



AMBITIOUS

We urge all of our students to aim high - both academically and in terms of their future aspirations. Our strong links to university and corporate partners allow us to provide a package of personalised support to enable students to realise their full potential. We place a strong focus on developing leadership capacity and the skills needed to secure and sustain a successful career.

CONFIDENT

We want all our students to leave us with a strong sense of their own identity, and of their individual talents and capabilities. We challenge students with a variety of new experiences to ensure that, by the time they leave us, they are able to present themselves confidently in any situation or environment.

OPEN-MINDED

We want our students to be active, positive contributors to society, with a good awareness of UK and global issues and a strong sense of both the rights and the responsibilities they hold. We teach them to think critically and to base their judgements on evidence, not assumptions. We encourage them to be curious, open to new ideas and experiences, and respectful of those who are different to them.

Our course offer

A Levels:

Accountancy	Art	Biology	Business Studies	Chemistry	Dance	Economics
English Literature	French	Geography	Government & Politics	History	Maths	Sociology
Further Maths	Physics	Psychology	Philosophy & Ethics	Spanish		

Level 3 BTEC Business

Level 3 BTEC Sport

Foundation and Vocational Learners Course

Academic monitoring and support

On enrolment, students are set challenging target grades for the end of Year 12 and their academic performance will then be monitored closely both by subject teachers and the wider sixth form team. Where concerns are identified, we intervene quickly to support students and enable them to get back on track. Formal assessments in October, December and March give students and their parents a clear indication of how they are performing. We currently enter students for AS exams at the end of Year 12.

A team of specialist sixth form tutors provide students with individual coaching to ensure they manage their workload effectively and perform to their full potential. In addition, a number of Year 12 students receive 1-1 academic mentoring and study skills support from current QMUL undergraduates. Our designated sixth form study room offers a quiet place to study during free periods and after school. We provide academic writing support, and encourage students to extend themselves beyond their course syllabus by undertaking online courses and entering competitions such as Senior Maths Challenge.



Celebrating success on results day



SFE football champions

Pastoral support

The high level of personalised support available at Langdon Park is one of the key strengths of our sixth form. Tutors see their students daily and are the first point of contact for any concerns they may have. The sixth form team, who work very closely together to support students, are:

Spencer Prichard, Assistant Headteacher Key Stage 5

Sarah-Jane Gordon, Head of Year and Enrichment Lead – will manage new Year 12 from September

Anna Joseph, Head of Year and Academic Lead

As we are a small sixth form, our Heads of Year are able to get to know each student individually and ensure they have the very best chance of success on their courses and in making plans for the future. Occasionally, students may experience personal difficulties which affect their studies; at such times the pastoral team will ensure they receive whatever individual support they need.

Leaders of this small but rapidly growing sixth form are tenacious in their drive for improving outcomes for their students. Leaders have a detailed understanding of students' needs and work hard to support their academic and personal development.

Ofsted. June 2016



Follow us on twitter @SixthFormLPS

Have questions/need advice?

We hope you will find the information in this prospectus helpful. If you wish to discuss anything with us, or have specific questions that aren't answered here, please do contact us at the school. Email sixthform@langdonpark.org or telephone 0207 987 4811.

We will be happy to arrange a meeting with you.

The school website will shortly include a dedicated sixth form area; please visit www.langdonparkschool.co.uk and select 'sixth form' from the menu.

Preparing you for university



Our core programme of support is the **FAST TRACK** programme. This is delivered by Kingston University but aims to ensure students are well prepared to make strong applications to any university.



Early in Year 12, students have sessions on higher education choices and student finance. A full day campus visit in the spring allows students to get advice from student ambassadors in their chosen subject areas, and this is followed by a **two day summer school** of subject taster sessions and UCAS advice in early July.

Students receive online support over the summer break and then have 1-1 meetings with Kingston's education liaison officers early in Y13 to give them personalised advice on their applications including feedback on their draft Personal Statements.

- We offer personalised support with sourcing appropriate taster courses and summer schools.
- We bring in university lecturers to give students a flavour of degree-level study, and **we are the only sixth form in Tower Hamlets with access to the Hackney University Extension Programme.**
- *Aim2Attain* programme includes a day trip to a university outside London.
- Day visit to UCAS Fair allows you to meet staff from all UK universities.
- Comprehensive package of support with your UCAS application and Personal Statement writing.
- If eligible, we will encourage you to apply for the **Goldsmiths Progression Scheme**, a two year programme of academic extension and application support leading to a reduced offer.



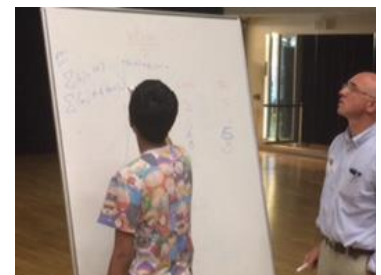
Trip to University of Cambridge

REACH programme aiming for Russell Group / Oxbridge?

You will be encouraged to apply or either **Kings + at KCL** or **Uni-Link at UCL**. If you are thinking of Oxbridge, we are one of a limited number of sixth forms eligible for **Oxford Pathways**, offering bespoke Y12 study days and a Y13 applications day. Ask Miss Gordon for details of all these programmes. We have particularly strong relationships with our partner colleges Wadham (Oxford) and Clare (Cambridge).

Personalised support with accessing summer schools, including Sutton Trust UK and US Summer Schools, and UNIQ at Oxford.

Our partnership with QMUL gives Langdon Park students access to their Physics Practical School, Engineering Spring School, and Medicine & Dentistry Summer school.



Manual Y12 working through a sample Cambridge interview task with Dr Dunajski of Clare College

Preparing you for your future career

- Strong links with, and easy access to, high-profile firms in Canary Wharf and the City.
- A network of professionals from Barclays and XL Catlin offer 1-1 mentoring during Year 12.
- Career Capital course delivered at law firm Davis Polk and Aim 2 Attain programme at Barclays.
- Networking events allow students to meet with professionals from a variety of sectors.
- Specific support for those looking to progress to apprenticeships and school leaver programmes including mock assessment centre days.
- **A least one week of high-quality work experience in Year 12 tailored to your career ambitions.** We have secured clinical placements at the Royal London through our partnership with Barts NHS Trust, aspiring lawyers have worked at our partner law firms Davis Polk and Mayer Brown and aspiring accountants at KPMG, Deloitte and EY.



Inspiring Women in Finance' event, Bank of England



mock trading exercise, Deutsche Bank



Mock interviews with Barclays volunteers



Career Capital CV workshop at Davis Polk LLP

Key corporate partners:



Davis Polk

MAYER • BROWN

Preparing you for SUCCESS

Our full and varied programme of opportunities ensures you leave us a well-rounded individual, equipped to handle whatever challenges come your way. There are dedicated enrichment sessions every Wednesday afternoon; we also offer additional, opt-in activities, such as debating, trips to the theatre and our sixth form football team. We encourage students to take on additional responsibilities such as Head Boy/Girl, Sixth Form Ambassador, or membership of our Student Leadership Team.

We will do everything we can to help you succeed. And we really mean that; our teachers and pastoral staff go the extra mile to ensure that students reach their goals. Helping you to realise your ambitions is what drives us as a sixth form team, and the level of support you get here is what sets us apart from other sixth forms and colleges.

'I was an external student myself, and I can honestly say that the people at Langdon Park are much more than just students and teachers, they're more like a family. The support you get is incredible.'

Sakila Rahman 2014-2016