



Olive Academies



Inspiring,
active,
purposeful
learning

**An introduction to
Olive Academies**



Olive Academies supports children and young people who have experienced difficulty in learning in mainstream schools.

We work with pupils who are at risk of exclusion, those who have been permanently excluded from school and those who have medical needs.

We are a multi-academy trust with three alternative provision academies and an outreach service in London and the east of England.

Our aim is to transform the lives of children and young people for whom traditional teaching methods have not worked. We help our pupils develop the confidence, skills and knowledge to believe that they can be successful in their own lives.



Olive Academies' staff are pioneers in alternative provision, providing children and young people with creative, nurturing and engaging learning opportunities.

We give them the chance to learn in small well-supported groups with a focus on therapeutic approaches and purposeful learning.

Children and young people are usually referred to one of our academies for a brief period of tailored support before returning to a mainstream school or progressing to an apprenticeship or college course.

Our teams of dedicated teachers deliver an innovative, engaging, high-quality curriculum personalised for each student.

All our students take part in an outdoor education programme and gain work experience.

We promote an ethic of excellence. All our students are encouraged to produce beautiful work.

We offer a broad curriculum to our students including core subjects such as English Language and Literature, mathematics, science and humanities. These are offered alongside vocational and creative subjects such as photography, art, drama, business and enterprise studies, food technology, computing, digital media and more.

Students can work towards qualifications at our academies including GCSE, BTEC, NVQ, V Certs, Functional Skills and Arts Award. All our Year 11 students are provided with support to secure places in further education, colleges or apprenticeships.

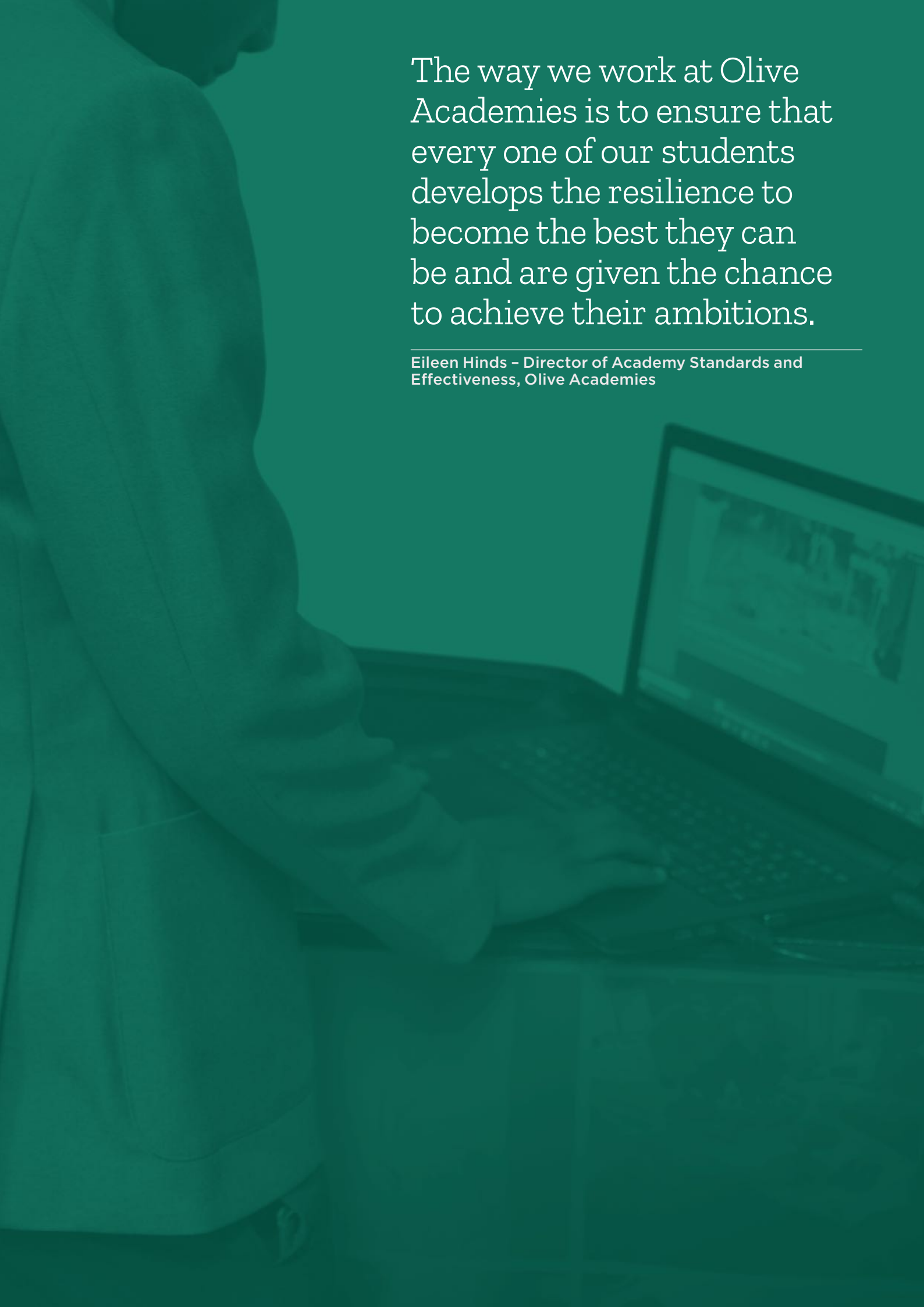
Every student works with their own Olive Academies coach. Our coaches provide nurturing one-to-one care and support, mentoring them throughout their time at our academy and during their transition back into mainstream school.

Olive Academies' coaches are able to help students improve their social skills and build a tailored package of therapeutic support to meet each student's needs. This can include anger management, restorative practice, art therapy and counselling support.

We want our academies to be safe and supportive communities, free from intimidation. Our pupils are positively encouraged to be ready to learn, be respectful and be safe whilst at our academies.

We work collaboratively with parents and carers, providing regular updates on their child's behaviour and learning achievements.



A person wearing a white lab coat is shown from the side, working on a laptop. The image is overlaid with a semi-transparent teal color. The person's hands are on the keyboard, and the laptop screen displays some text and graphics. The background is a plain, light-colored wall.

The way we work at Olive Academies is to ensure that every one of our students develops the resilience to become the best they can be and are given the chance to achieve their ambitions.

Eileen Hinds - Director of Academy Standards and Effectiveness, Olive Academies

Olive AP Academy Thurrock

Just 40 minutes from central London by train, Olive AP Academy – Thurrock is based in Tilbury. Our brand new building opened to staff and students in summer 2017. The academy facilities include purpose-built kitchens, computing suites, music studio and multi-sports pitch.

Our alternative provision academy has up to 96 students aged between 11 and 16 on roll at any one time.

Our staff supports young people who have been placed at the academy for a period of intervention work, following a permanent exclusion from a mainstream school. The academy also supports young people with medical needs.

Olive AP Academy – Thurrock
Leicester Road
Tilbury
RM18 7AX

T 01708 853781

W apthurrock.oliveacademies.org.uk

E info.thurrock@oliveacademies.org.uk

Twitter @OAThurrock



At the age of 15 **Frank** was struggling to control his behaviour in mainstream schools. He had disengaged from education. The Olive AP Academy - Thurrock team visited Frank at home, worked closely with his family and gradually gained his trust. Frank responded with enthusiasm to hands-on, practical learning opportunities at the academy. He is now settled in the classroom, ready to learn and making good progress. With support from his OA coach, Frank is proud to have secured his first work experience placement.



Olive AP Academy Suffolk (Central)

Olive AP Academy – Suffolk (Central) is based across two sites in Stowmarket and Bury St Edmunds. Our alternative provision academy supports pupils aged between 7 and 16. The academy offers students an inspiring curriculum with a sports hall, art and design technology room, science laboratory and garden.

The academy has up to 60 pupils on roll at any time and offers support to pupils in Key Stages 2-4 with complex or medical needs and those who have been permanently excluded from school. The academy also offers support to pupils in mainstream schools who are at risk of exclusion.

Olive AP Academy – Suffolk (Central)
Chilton Way
Stowmarket
IP14 1SZ

T 01449 613931

W apsuffolk.oliveacademies.org.uk

E info.suffolk@oliveacademies.org.uk

Twitter @OASuffolkC





Ben was 7 years old when he was referred to Olive AP Academy - Suffolk (Central). He found it difficult to manage his behaviour around other children. With intensive support from OA staff, working in partnership with his family, Ben began to work well alongside classmates and develop good friendships. He responded positively to the OA behaviour systems and is excited about his transition back into a mainstream school next term.

Olive AP Academy Havering

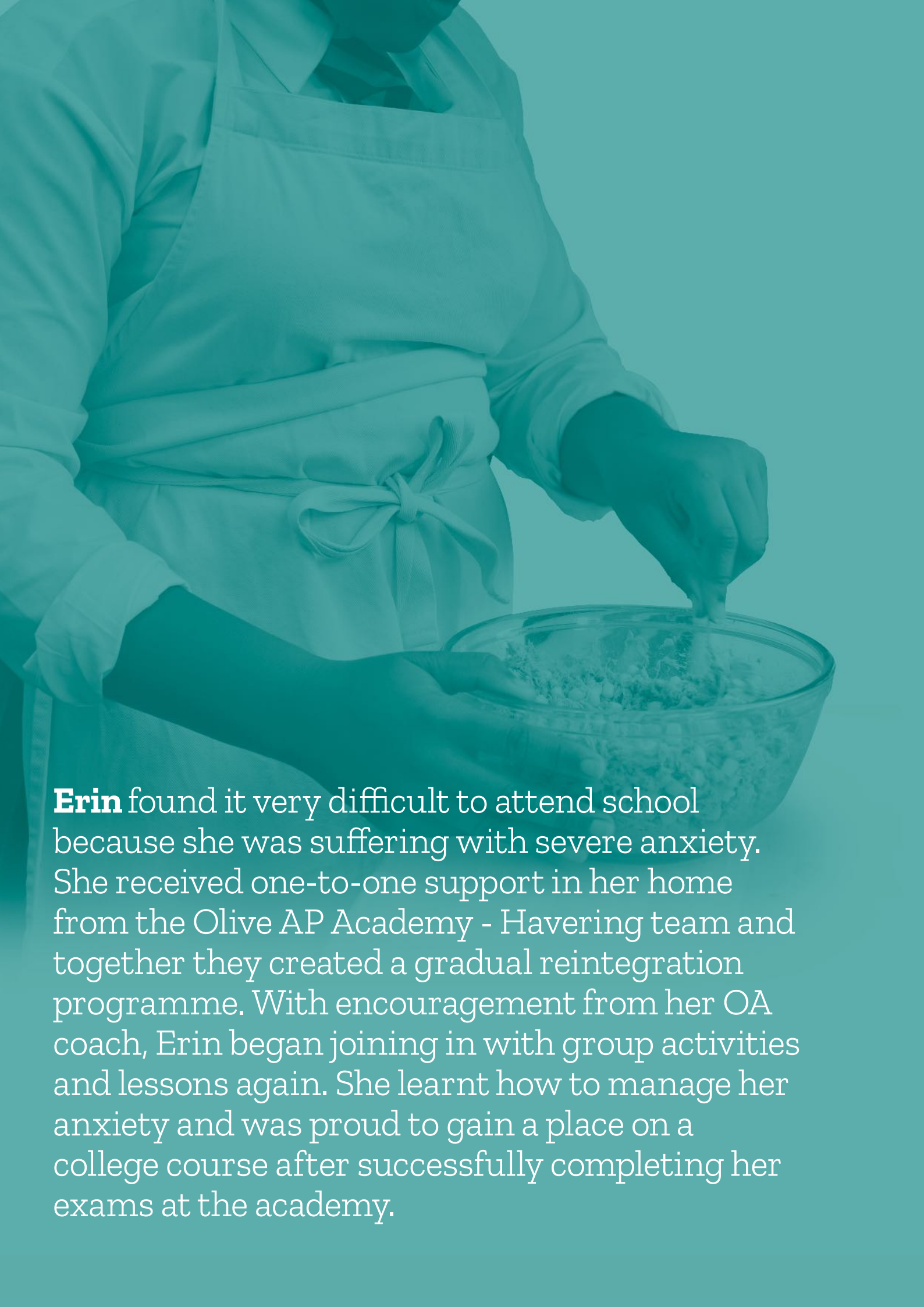
Our alternative provision academy in Hornchurch, in the London Borough of Havering, supports young people aged between 11 and 16 who have been permanently excluded from school. The academy also offers an intervention programme specifically for those young people who are at risk of permanent exclusion from their mainstream school.

The academy has capacity for up to 64 pupils. The academy building is undergoing a major refurbishment programme and the new facilities will be completed by the end of 2018.

Olive AP Academy - Havering
Inskip Drive
Hornchurch
RM11 3UR

T 01708 478892
W aphavering.oliveacademies.org.uk
E info.havering@oliveacademies.org.uk
Twitter @OAHavering





Erin found it very difficult to attend school because she was suffering with severe anxiety. She received one-to-one support in her home from the Olive AP Academy - Havering team and together they created a gradual reintegration programme. With encouragement from her OA coach, Erin began joining in with group activities and lessons again. She learnt how to manage her anxiety and was proud to gain a place on a college course after successfully completing her exams at the academy.

Olive Academies Outreach

Olive Academies also provides support packages to mainstream primary and secondary schools for the children and young people who they are most worried about – those who may be at risk of permanent exclusion.

Our outreach team has extensive experience of helping schools and local authorities effectively implement strategies to prevent permanent exclusions; helping teachers and support staff to develop inclusive practice in the mainstream classroom.

In 2015/16 Olive Academies ran an outreach service in the Suffolk area, supporting 36 primary aged pupils who had been identified as at risk of permanent exclusion.

Olive Academies' staff worked intensively with the children, in partnership with their mainstream schools.

Prior to our intervention, these pupils were involved in 63 incidents of fixed-term exclusions.

During the period of our support, there was a 76.3% reduction in fixed-term exclusions and no permanent exclusions.

To find out more about our outreach services, please contact our central office on 01273 573834.



We have been able to avoid a permanent exclusion as Olive Academies provided us with a skilled practitioner to help us support the child.

Headteacher, Clements Primary Academy,
Haverhill

Olive Academies has high expectations of young people and a deep understanding of their needs.

Andrew Blake-Herbert - Chief Executive,
London Borough of Havering

Olive Academies staff are conscientious and hardworking with an absolute commitment to the young person they are working with.

Headteacher, Halifax Primary School, Ipswich

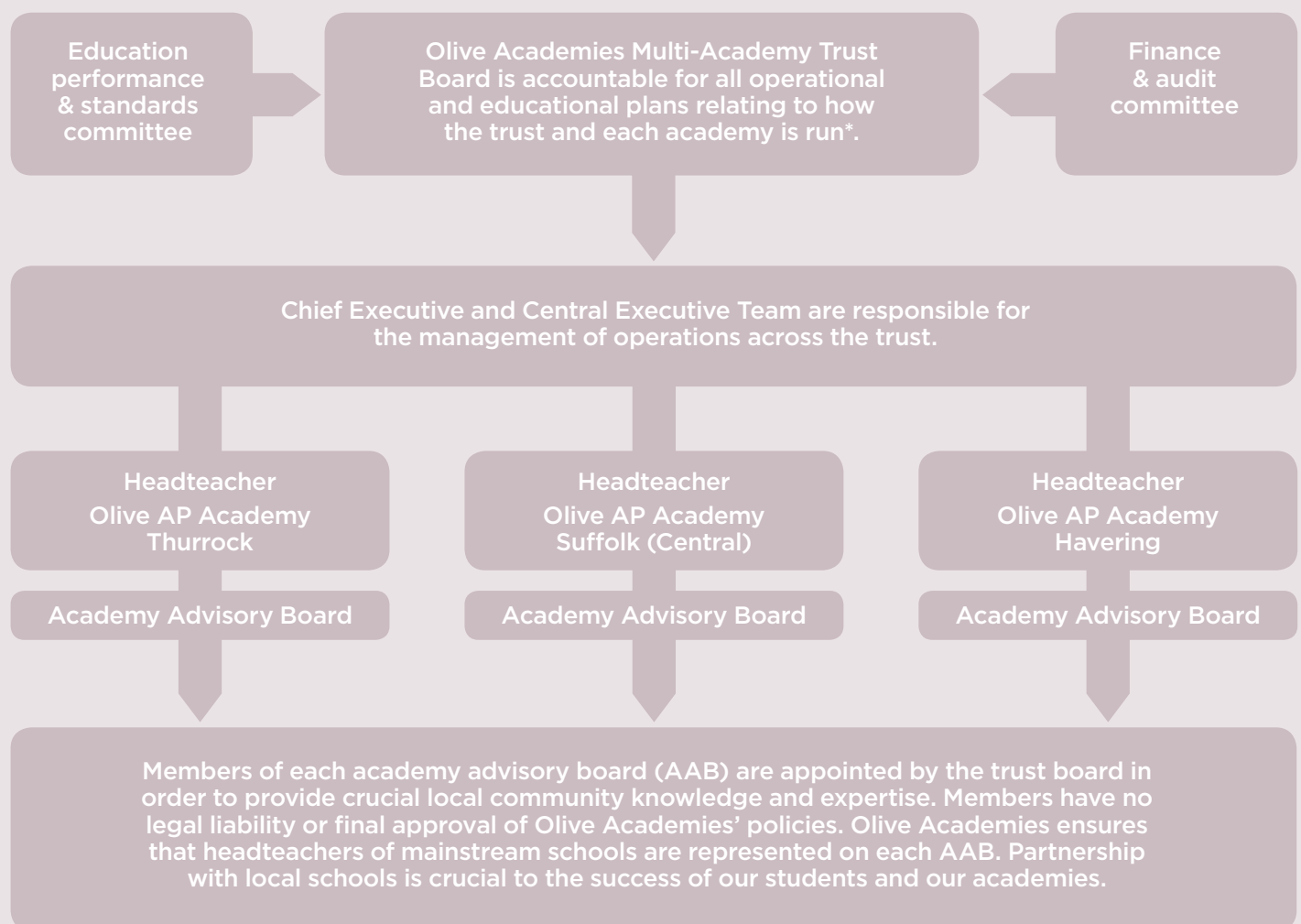


Olive Academies Multi-Academy Trust was formed in 2013 by a group of educational leaders determined to create enriching opportunities for young people struggling to succeed in education.

Academies are publicly funded schools. Alternative provision academies are funded directly from the government, as well as local authorities. The relationship between our trust and the Secretary of State for Education is set out in a legal document known as the funding agreement. This can be found alongside our annual report and financial statements at www.oliveacademies.org.uk

We employ around 80 members of staff in our three academies and at the trust's central office in Brighton.

Olive Academies Structure



* Olive Academies MAT Board members' details can be found at www.oliveacademies.org.uk

At Olive Academies we believe that every child and young person has the ability and the right to learn and achieve. Alternative provision has far too often been regarded as the poor relation within the educational context and we are determined to redress this through our pioneering work.

Mark Vickers - Chief Executive, Olive Academies

We are a young trust and operate in sometimes challenging circumstances. I am convinced that with our efforts and the hard work of our pupils, more and more young people will be able to say that as a result of their contact with Olive Academies they are in a materially better position to succeed in their lives.

Philip Whall - Chair of Olive Academies MAT Board



Olive Academies – Central office
95 Ditchling Road
Brighton
BN1 4ST

T: 01273 573834

E: info@oliveacademies.org.uk

 [@OliveAcademies](https://twitter.com/OliveAcademies)

 [OliveAcademies](https://www.facebook.com/OliveAcademies)

 [OliveAcademies](https://www.linkedin.com/company/OliveAcademies)

Olive Academies is a charitable company incorporated
in England and Wales with registered number 8747464.