

# BRIGHTON COLLEGE INTERNATIONAL

Join us:  
IT Support Engineer  
Al Ain, UAE

Start Date: May 2026 (ASAP, Subject to Candidate Availability)



CLOSING DATE: FRIDAY 28th APRIL 2026



THE SUNDAY TIMES

# About Brighton College

## The Brighton College Family of Schools

Brighton College was one of the first UK independent schools to take its distinctive approach to education to markets beyond the UK. From the outset of this international development in 2011, when Brighton College Abu Dhabi opened, our driving ambition has been to ensure each new addition to our family of schools is recognisably a Brighton College school. The Brighton College International (BCI) group now has schools in: Abu Dhabi (2011), Al Ain (2013), Bangkok (2016), Dubai (2018), Singapore (2020), London (2023) and Hanoi (2023).

## Brighton College UK

Brighton College – awarded the title of ‘School of the Decade’ by the Sunday Times – is consistently recognised as the UK’s leading coeducational independent school. Academic results place Brighton College in the top 10 schools in England. In addition to the ‘School of the Decade’ award in 2020, Brighton College has achieved numerous other recent accolades, such as: Most Forward-Looking School in Britain (The Week); Top School in Britain for STEM Subjects (The Week); Best Sixth Form in Britain (The Week); and Best 125 Private Schools Across the Globe (Carfax Education).



# About Brighton College International (BCI)

Brighton College International (BCI) has put in place the structure, resources and expertise to ensure that the Brighton DNA prevails in all Brighton schools. Brighton College's Principal and Group CEO, Richard Cairns, is actively engaged in the work of the international schools, and a team of talented colleagues in BCI provide support across curriculum, admissions, operations, marketing and innovation. The Heads in our family of schools receive support from and regular communication with the BCI team, whilst being given the autonomy to lead their schools and ensure their school works most effectively in its local context. All Brighton College Heads are invited to the annual Brighton College Heads' Conference as part of their professional development and to share good practice in leadership across the group. In addition to the quality assurance visits by Brighton College UK, there are also numerous instances of further collaboration within our family of schools. These include professional development for teachers, pupil collaboration, shared webinars and guest speakers across the group. Alumni from every school are part of the Brighton College Connect network, with several thousand members.

## Curiosity, Confidence and Kindness

Every Brighton College school is a happy place, with a warm, inclusive and respectful community. All Brighton schools promote curiosity and a love of learning from Nursery, right through to our leavers at age 18, which is one of the reasons why Brighton College pupils do so well in examinations and go on to many of the world's top universities. Academic interest on its own is not enough though, and results, excellent as they are, do not tell you much about the richness of a Brighton education. Meeting our pupils does; all visitors comment on their confidence and politeness.

This confidence – the right sort of confidence – arises from their being encouraged to participate in lessons, the co-curriculum and also the community beyond the school gate, in which they learn to collaborate and show each other mutual respect and kindness. We always stress the importance of kindness, and encourage pupils to actively seek opportunities to demonstrate their commitment to this vital quality. With each Brighton College International school embracing the educational values, distinctive character and high standards of Brighton College UK, the Brighton DNA is evident throughout the exceptional family of schools.



## EMIRATI CULTURE

Learn about the rich legacy of knowledge and tradition that has shaped the UAE's journey by visiting the Presidential palace, Qasr Al Watan and the Sheikh Zayed Grand Mosque, just two of the many cultural landmarks in Abu Dhabi.



## TAX-FREE INCOME, A STABLE CURRENCY AND ATTRACTIVE SALARY PACKAGE

Benefit from the UAE Dirham being seen as among the world's most stable currencies in terms of exchange rate stability. Tax-free salaries, available for all inhabitants of the UAE, makes Al Ain one of the best locations to build a future. Our reviewed salary scale makes us one of the top schools in the UAE for teacher pay.



## LOW COST OF LIVING

The cost of living in Al Ain is lower than that of the larger cities in the region, offering staff the opportunity to save while enjoying everything the city has to offer. Just a few years ago, fuel was cheaper than bottled water in the oil-rich UAE. While this may no longer be the case, it is still considerably less expensive than elsewhere in the world.



## FAMILY FRIENDLY

There are plenty of family-friendly activities available at the club, including an outdoor pool, a gym, a beauty salon, tennis, soccer, basketball, and a climbing wall. An added benefit for teachers is the new 2.5 day weekend, with all Al Ain schools closing at 12 noon on Fridays. With Dubai and Abu Dhabi on the doorstep, there's plenty of time to be spent exploring everything these magnificent cities have to offer including world-famous architecture and beautiful sandy beaches.



## NEVER A DULL MOMENT

Al Ain has a plethora of tourist attractions offering a range of experiences and opportunities. Whether it is strolling around Al Ain Zoo, hiking up Jebel Hafeet Mountain, or exploring the beauty of Al Ain Oasis, there is something for everyone to enjoy. Expat social life revolves around clubs and hotels. It's a great way to unwind after a busy day at school and find likeminded friends to enjoy weekends. There are a number of luxury hotels, swimming pools, and venues for dining, music, and entertainment located throughout the city.



10 reasons to live in Al Ain



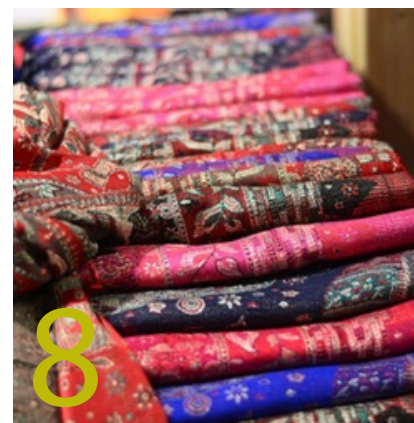
## THE GARDEN CITY

Nicknamed 'the Garden City' because of its stunning green landscapes and abundance of parks, leafy boulevards and springs, Al Ain is the fourth largest city in the UAE, located less than 90 minutes away from both Abu Dhabi and Dubai



## AL AIN LIFESTYLE

The standard of life is high in Al Ain, services are efficient, and convenience is a strong feature of the day-to-day. Over the past several years, Al Ain has attracted an increasing number of expat residents who enjoy everything that this desert city has to offer. Living in Al Ain allows one to experience the true UAE, where both contemporary business and traditional culture thrive alongside each other.



## SAFETY

United Arab Emirates is a leader in world-rankings for the lowest crime rate in cities. Al Ain's safe and calm environment is a renowned feature, providing a haven for family life, the young, elderly, women and children.



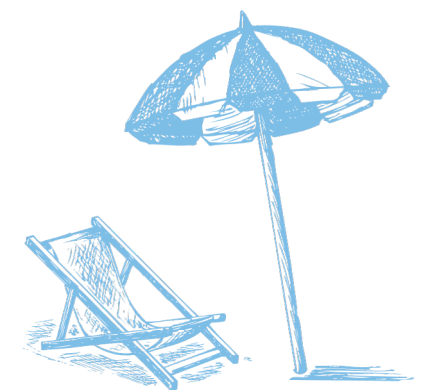
## TRAVEL

With Dubai and Abu Dhabi international airports within a 90-minute drive away, Al Ain is the perfect 'hub' for travel, offering inexpensive and accessible adventures to much of Asia, Europe and Africa. Its favourable geographical location makes the city one of the best places in the world for tourism.



## SUNSHINE

Bid farewell to the rain and grey – Al Ain is sunny all year round. The city's average temperature hardly drops, and while the summer months are characterised by indoor and air-conditioned terrain such as malls and leisure centres or relaxing pool days, from September to May the comfortable, breezy weather allows for all manner of outdoor pursuits, from mountain biking to dune-bashing, to exploring markets and souks.



# BRIGHTON COLLEGE AL AIN ABOUT THE SCHOOL

Brighton College Al Ain educates nearly 1,000 pupils aged 3 to 18, spanning the Pre-Prep (including EYFS), Preparatory (Years 1-5), and Senior (Years 6-13) sections. It offers a world-class learning environment where children are inspired to achieve their best academically, artistically, and athletically. The College places equal importance on developing character and fostering a lifelong love of learning.

The curriculum is rooted in the British Curriculum, enhanced to reflect the College's location and its international community. Specialist teachers support pupils from the earliest years, delivering expertise in subjects like PE, Computing, Music, Arabic, Islamic Studies, and Modern Foreign Languages. A strong focus on English and Mathematics ensures a solid foundation for academic success.

Brighton College Al Ain prioritises breadth and enrichment through opportunities such as visiting speakers, museum trips, exhibitions, House competitions, and community events. Pupils benefit from state-of-the-art facilities across music, drama, science, PE, and more, ensuring a well-rounded education. High levels of learning are consistently achieved, with pupils stretched and challenged across all subjects.

Creativity, collaboration, and individual achievements are celebrated through productions, performances, sporting events, and co-curricular activities. These experiences, combined with academic excellence, lay the essential foundations for life beyond Brighton College Al Ain.

As part of one of the UAE's most successful school groups, our pupils consistently secure places at leading universities worldwide. Notably, 50% of the 2024 cohort earned offers to study Medicine, underscoring the College's strength as a hub for aspiring medics.

Graduates pursue careers in diverse fields such as Medicine, Law, Engineering, Architecture, Finance, Business, Psychology, and Film, exemplifying the College's commitment to preparing pupils for bright and successful futures.



# ABOUT THE ROLE

Brighton College is an exciting place to work, and it is our staff who make our community such a vibrant and stimulating environment. The academic success of our school is due to excellent, innovative and well-planned teaching alongside outstanding pastoral and emotional support. Above all, therefore, we are looking for an individual who demonstrates an ability and genuine desire to develop pupils to their fullest potential.

In the application process, we will look for candidates who demonstrate the ability to thrive within an environment that staff describe as both invigorating and refreshing. The ability to inspire children, and the willingness to support the ambition, values and breadth of school life, will be of central importance. Successful candidates will be self-reliant, solution focused, resilient and adaptable.

## JOB PURPOSE

The IT Support Engineer will be a key member of the Bloom Holding (Schools) IT department providing technical assistance and support for endpoint systems, software, and hardware. This role involves troubleshooting, resolving issues, and providing IT support for end users. The ideal candidate will have strong technical knowledge, communication skills, and the ability to work efficiently under pressure.

Candidate should have minimum 6 Years of relevant experience.

Should be able to work both as part of a team and under own initiative.

Should carry a positive attitude towards end user support.



## TECHNICAL SKILLS

- Strong knowledge of desktop operating systems (Windows 10/11, MacOS).
- Proficient in Microsoft Office Suite and other common software applications
- Experience with Active Directory, remote desktop tools, and ticketing systems.
- Ability to diagnose hardware and software issues and recommend solutions.
- Proficiency in Active Directory and Group Policy management and troubleshooting.
- Knowledge of Microsoft 365 applications and services, including Exchange Online, Teams, OneDrive, SharePoint, and Office applications.
- Ability to manage Exchange Online, user mailboxes, and distribution groups.
- Proficiency in school IT systems such as ISAMs, LMS and JAMF will be a plus point.

# QUALIFICATIONS AND EXPERIENCE

- Bachelor's Degree in any computer stream (3-4 Yrs)
- Relevant IT certifications will be an advantage (CCNA, CompTIA Network, AZ-900, MS-900 etc.)
- accompanied by records of employment.
- Minimum 6 Years of relevant experience.
- Previous experience in Schools IT Support.

## KEY RESPONSIBILITIES AND OBJECTIVES

- Provide first and second-level support for desktop hardware, software, and peripheral devices.
- Diagnose and resolve issues related to operating systems (Windows, Mac), applications, networking, and hardware malfunctions.
- Install, configure, and maintain desktop computers, laptops, printers, and other related devices.
- Install, update, and configure operating systems, software applications, and system patches.
- Onboarding and Offboarding IT devices for end users based on the new joiners and exist users.
- Offer support to end-users in a friendly and effective manner. Assist with user account setup, password resets, and software usage.
- Log all support requests, incidents, and resolutions in the IT ticketing system. Ensure timely resolution and follow up with users.
- Maintain documentation for system configurations, troubleshooting steps, and user guides.
- Manage user accounts, security groups, and organizational units (OUs) using Active Directory Users and Computers (ADUC). Perform user provisioning, de-provisioning, and password management.
- Configure and maintain user accounts, groups, licenses, and permissions within the Microsoft 365 admin portal.
- Create, modify, and delete user accounts, manage mailboxes, shared mailboxes, and distribution groups within the Microsoft 365 Admin Center.
- Exposure in managing the Active Directory and M365 components would be an added advantage.
- Automate daily and repetitive tasks with PowerShell scripts.
- Monitor and maintain the endpoint backup with enterprise backup solutions such as SolarWinds and Veeam.
- Maintain the IT assets and up to date inventory on the Asset Management system.

# The application process

All applications must consist of the following completed documents:

1. Letter of application (maximum one and a half sides) addressed to Mr Oliver Bromley Hall, Head Master of Brighton College Al Ain. Please state clearly in your letter your teaching experience, together with details of your co-curricular strengths and contributions. This should be attached to your electronic application.
2. CV (maximum two sides) naming two referees, one of whom must be your current or most recent employer. This should be attached to your electronic application.

Please note:

Incomplete applications will not be considered and Brighton College Al Ain reserves the right to make an appointment at any stage of the recruitment process.

Due to the expected high levels of interest in this position applications, only candidates selected for interview will be contacted within 7 days of the closing date for applications.

## Closing Date and Interviews

Deadline for Applications will be on 28th April 2025.

Short list interviews are likely to take place the week following week, but we may contact candidates sooner for interview and appoint ahead of the closing date should we identify the right candidate, so an early application is recommended.



## Safeguarding and equal opportunities

Brighton College Al Ain is committed to safeguarding and promoting the welfare of children and young people and expects all staff and volunteers to share this commitment. Please note that should your application be successful, a police check will be undertaken in the country of origin; in the UK, a disclosure will be requested from the UK's Disclosure and Barring Service.