



ELY COLLEGE

College Prospectus

2016 - 2017

CMAT

Cambridge Meridian
Academies Trust



Contents

Welcome from the Principal.....Page 3

The Academy Trust.....Page 4

The CMAT Family.....Page 6

The College Identity.....Page 7

House System.....Page 8

Vertical TutoringPage 9

The Year 7 ExperiencePage 11

College PLEDGESPage 13

Session 6Page 14

Enrichment Opportunities.....Page 15

The CurriculumPage 17

Valued Member of the CommunityPage 18








Welcome from the Principal

I am delighted to be the new Principal of Ely College and part of the on-going project to deliver an excellent school of which the city of Ely can be proud.

Ely College has high expectations of all its students and in return offers a high-quality education at the heart of our community. We will develop our students into successful, confident, responsible and employable citizens. We aim to be a supportive hub for our students, their families and the wider community. While we are committed to providing the strongest academic experience for our students, we also excel in broader subject areas to provide our students with a balanced and well-rounded education.

The College is supported by the village college ethos and the values of the Cambridge Meridian Academies Trust (CMAT), described by Ofsted as: ‘an absolute belief that every child matters’. The core of this philosophy is:

-  **Achievement for all**
-  **Providing a high quality learning environment**
-  **The pursuit of excellence**
-  **Extending the boundaries of learning**
-  **Valuing people**

We expect students to work hard and develop resilience when faced with challenges. Together we will celebrate the achievements of our students, whatever their level of ability. We know that learning is at its best when staff, students and parents work closely together, so on behalf of the staff may I say that we look forward to meeting with you and seeing you at as many College events as possible.

This prospectus provides a useful summary of how we translate these aims into reality for each student. We hope that you will be inspired to join us in the pursuit of our aims of knowing and supporting every student to achieve and enjoy their school experience. I look forward to meeting you in person and welcoming you to the College.

Richard Spencer



The Pursuit of Excellence

CMAT | Cambridge Meridian Academies Trust

The Academy Trust

Ely College joined the CMAT family in July 2016. The Trust was formed with a simple and clear vision: 'to ensure high quality education at the heart of the community.' It also enabled Swavesey Village College to sponsor other academies, and help spread the best education practice. Swavesey Village College is considered to be 'outstanding in every respect' by Ofsted.

The Trust truly values the success of every child and place the sharing of excellent education practice at its core. It is committed to improving the quality of education and life in Cambridgeshire and Peterborough, and their immediate surroundings. The Trust is dedicated to maintaining its core principles and focus as it grows.



Valuing People

- ▶ Appreciating the incredible trust placed with us in educating young people and serving our community
- ▶ Valuing the diversity and qualities of our staff and students
- ▶ Ensuring that all students and staff feel known, appreciated and supported
- ▶ Committing whole-heartedly to collaboration within, between and beyond our academies



A high quality learning environment

- ▶ Providing high quality buildings, engaging classrooms and excellent sporting facilities
- ▶ Delivering innovative learning resources and materials
- ▶ Ensuring a well-disciplined and caring environment
- ▶ Exploiting cutting edge technologies to expand the opportunities for students, staff and our community to benefit from learning in a digital age



Achievement for all

- ▶ Ensuring that every student achieves their maximum potential
- ▶ Maintaining a relentless sense of optimism
- ▶ Removing barriers to learning
- ▶ Providing a whole education: academic excellence co-existing with an exceptional commitment to activity beyond



The pursuit of excellence

- ▶ By expecting this of every person, every day
- ▶ Continually striving for the creation of a true meritocracy
- ▶ Promoting and celebrating elite performance inside school and in the wider world
- ▶ Rejecting outright any sense of complacency



Extending the boundaries of learning

- ▶ Providing positive memorable experiences inside and outside of the classroom
- ▶ Providing a diversity of experience to all
- ▶ Opening up the world to all students
- ▶ Securing the very best future educational and vocational experiences for our students

For more information about CMAT, visit our website: www.cmatrust.co.uk

The CMAT Family

CMAT | Cambridge Meridian Academies Trust



Swavesey
VILLAGE COLLEGE

Swavesey Village College was the founding member of the Trust and is regarded as being 'outstanding in every respect' by Ofsted (2011). The College is also an accredited Teaching School.



Stamford Welland
Academy

Stamford Welland Academy started working with CMAT in September 2014. Within 60 days of taking over the Academy, Ofsted noted that the new leadership team had already made a positive 'impact on improving behaviour, the monitoring of student progress, teaching and raising the expectations of students and staff' (2015).



NenePark
Academy

Nene Park Academy was the first sponsored Academy to join the Trust in 2011. Since joining CMAT, the Academy has recorded significantly improved GCSE and A Level results and is now rated as being 'Good' by Ofsted (2013).



West Town
Primary Academy

West Town Primary Academy was the first primary school to join the Trust in June 2014. During its first full academic year under CMAT's leadership, the Academy recorded its highest ever Key Stage Two results.



North Cambridge
Academy

North Cambridge Academy, formerly known as the Manor Community College, recorded one of the worst set of GCSE results in the country in 2012. After joining CMAT, these results had tripled by 2014, and the school is now rated as 'Good' by Ofsted (2015).



Sawtry Village
Academy

Sawtry Village Academy, formerly known as Sawtry Community College, joined CMAT in 2014 after the College was placed into special measures. The Academy has now moved out of special measures and has seen its leadership and management "completely transformed" according to Ofsted.

The College Identity

Uniform

Our uniform is currently undergoing a refresh.

Although we have begun to make slight changes to the uniform this year, we recognised that to change the uniform entirely in September would have placed a burden on families already at the school. We will therefore be consulting through 2016/17 with a view to a full uniform change in September 2017.

To mark the move to a House system in the College, and to immediately smarten students' appearance, we have provided every student with a tie in their House colour. We currently expect these to be worn over a collared white shirt, underneath the existing V-neck sweaters, from September.

All of the uniform to be worn by students in Years 7 to 11 is available to be purchased from the school and white shirts can be purchased from most supermarket retailers.

Students must wear the correct uniform when travelling to and from the College as well as during the school day.

Compulsory for all Years 7-11

Shirt - White collared shirt.

College sweatshirt - College sweatshirt with the College logo which may be removed in lessons with the teacher's permission and outside in hot weather.

Skirt - Plain black traditional-style, knee-length skirt of normal school style.

Trousers - Plain black, full-length, tailored school trousers (no leggings, combat or jeans style).

Tights/Socks - Black, white, or grey.

Shoes - Plain black, smart, leather-type shoe, suitable for a professional office environment.



Valuing People

Ely College embeds CMAT's core values at the heart of everything we do. These initiatives have been developed and proved to be successful at other schools in the Trust.



Vertical Tutoring

The mixed aged tutor group system is known as Vertical Tutoring. Each tutor group will have a mixture of students from Years 7-11.

The Vertical Tutoring system has many benefits, fostering a family spirit where older students offer guidance and provide support to younger students. It also ensures students have a sense of the whole school picture as the younger students see the older ones preparing for work experience, subject choices and important examinations.

The tutors will follow the students from their first few days to their last at the College.

This allows them to easily build great relationships with students and their families and ensure they receive the support they need. Each tutor will make regular contact with a child's family in the year to discuss progress and address any concerns.

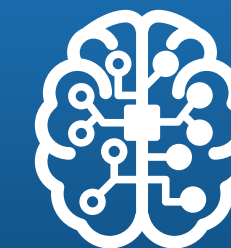
An encouraging House ethos for students to strive in is developed and strengthened by healthy competition. Students will have the opportunity to compete alongside their House peers in a variety of activities in order to claim victory and win the prestigious House Award.

House System

Ely College has four main school Houses:

The Houses provide crucial support and guidance, and the needs of every student are acknowledged and understood by their tutor and senior tutor. The system enables individual progress to be monitored much more closely and the House is the key focus of the relationship between the College and families, with siblings joining the same House.

The House offices are a great base for students and parents to find the support and assistance they may need. Each house has a dedicated member of the leadership team, a senior tutor and a student support advisor. There are 12 tutor groups per house. Approximately 22 students ranging from Year 7 to Year 11.



Turing



Scott



Franklin



Etheldreda

A high quality learning environment

The Year 7 Experience

Once students are allocated a place at Ely College, our main aim is to get to know each individual student as soon as we can through regular, personal contact.

This is the least that we can offer students within that vital first term. Should situations arise where a student may need more support, we promise communication will be easy, valued and effective from the very start of your partnership with us.

Our commitment to transition starts early, with many activities planned, organised and supported by Ely College's staff and students throughout the course of the academic year with our partner primary schools.

This is crucial because it allows the primary students to familiarise themselves with the College, its values and its culture before arriving in September.



Achievement for all



PARTICIPATION
PLEDGE



LEADERSHIP
PLEDGE



EXCELLENCE
PLEDGE



DIVERSITY
PLEDGE



GIVING
PLEDGE



ENVIRONMENTAL
PLEDGE



SERVICE
PLEDGE

College PLEDGES

We have an uncompromising commitment to ensure that every child achieves their academic potential at Ely College. Our curriculum has been carefully designed to secure the best possible outcomes for our students. We also have support systems in place for students that need extra support and guidance to achieve.

In order to support our challenging curriculum, we have also developed and invested in a simple but broad set of College Pledges that students are expected to complete during the course of their time at the College, at Bronze, Silver and Gold levels.

Pledges are an awards system which offers students a range of character-building opportunities that enhance their learning and development. It is an expectation of every student to complete their Pledges during their time at the College.

The Pledges system aims to encourage and support many important qualities in students, such as responsibility, expectation, intuition and citizenship, all of which are crucial for giving students skills and brighter futures.

Did you know?

- *Completing Pledges can also help your House to win the House Award*



Session 6

Ely College offers a wide variety of extra-curricular opportunities through a timetabled programme over the year. These encompass activities such as sports, film making, music and additional subject support.

The College day extends to 4.30pm for those students who wish to stay for after-school activities or additional curriculum assistance – these sessions are called Session 6's. The College also provides transport to the local villages to allow students to get home from these activities at a minimal cost.

Session 6 can also be important in ensuring that students achieve their absolute best. Teachers will recommend sessions that will be useful if a student needs additional support or clarification. Students can also drop into extra-curricular sessions themselves if they are feeling overwhelmed or need assistance.

Did you know? Attending Session 6s can help you work towards your Pledges



Enrichment Opportunities

We believe in an all-inclusive education where every student not only develops academic skills, but self-confidence, life-skills, and leadership experiences.

In addition to the enrichment programme, there are a wide-range of other whole College community events:

- ▶ Inter-House competitions
- ▶ Extended curriculum days
- ▶ Charity events

There are student leadership opportunities to be found throughout all aspects of College life – from the informal leadership that is inherent in the mixed age tutor groups, through to the College House Captains, and local and national representative groups.

Current Session 6 and lunchtime activities include:

- ▶ Engineering Club
- ▶ Debating Club
- ▶ Computing Club
- ▶ Schools Shakespeare Competition
- ▶ Sewing Bee
- ▶ Reading Group / Reading Aloud
- ▶ Knitting and Crochet
- ▶ French Club
- ▶ Charity Committees

Current Music groups / ensembles include:

- ▶ Gypsy Jazz ensemble
- ▶ Choir
- ▶ Brass ensemble
- ▶ Jazz ensemble
- ▶ Jazz combo
- ▶ String ensemble

Current Sports clubs and opportunities include:

- ▶ Rugby
- ▶ Netball
- ▶ Basketball
- ▶ Ultimate Frisbee
- ▶ Football
- ▶ Dodgeball

Extending the boundaries of learning

The students are at the heart of the educational process and must be encouraged to participate fully in the life of the College. Contributions and ideas from all students will be valued and listened to. We believe that all students, regardless of their age, gender, ability and background should experience personal fulfilment through the 'entitlement curriculum'.

It is essential to recognise that education is an 'on-going' process and students receive only a section of their education at this school. The curriculum of the school must be continuously evolving, forward looking and under constant review. The school will ensure that its statutory duties regarding the curriculum are carried out.

Curriculum Structure: Key Stage 3 (KS3)

Students in Years Seven and Eight (Key Stage 3) currently study the following subjects:

- ▶ English
- ▶ Mathematics
- ▶ ICT
- ▶ Physical Education
- ▶ Science
- ▶ Creative Arts (Art, Drama and Music)
- ▶ Humanities (Geography, History, and Religious Education)
- ▶ Modern Foreign Languages (French, German or Spanish)
- ▶ Technology (covering aspects such as Food, Graphics, Resistant Materials and Textiles)
- ▶ Personal Development, Careers Information, Advice and Guidance)



Curriculum Structure: Key Stage 4 (KS4)

All students in KS4 work towards external examinations in all subjects with the exception of Physical Education. Students in Years 9 to 11 have some degree of choice but all students will study:

- ▶ English
- ▶ Mathematics
- ▶ Science
- ▶ Physical Education
- ▶ Humanities (History, Geography)
- ▶ Core studies which includes Religious Education, Personal Development, Careers Information, Advice & Guidance

There will also be a number of guided choices designed to give a good range of choices and sound careers and further education progression. Students can choose from subjects such as:

- ▶ Computer Science, IT
- ▶ Creative & Performing Arts (Art, Drama, Media Studies, Music)
- ▶ Humanities (Business Studies, Religious Education, Child Development, Health and Social Care)
- ▶ Physical Education
- ▶ Languages (French, German, Spanish)
- ▶ Technology (Food Technology, Catering, Construction, Hairdressing, Graphics, Product Design, Textiles)



Curriculum Structure: Key Stage 5 (KS5)

Bishop Laney Sixth Form is based at Ely College and Soham Village College. At Bishop Laney we offer a range of highly regarded professional and academic courses. All students engage in a planned programme of extra-curricular and work related learning. The subjects currently offered are:

- ▶ Business Management
- ▶ Business Administration
- ▶ Accounting
- ▶ Media Studies
- ▶ Sport
- ▶ Catering & Professional Cookery
- ▶ Performing Arts
- ▶ Health & Social Care
- ▶ Construction & the Built Environment
- ▶ Hairdressing
- ▶ Norwich City Football & Education

Supplementary Courses:

- ▶ GCSE English
- ▶ GCSE Mathematics
- ▶ IT Skills ECDL





Valued member of the community

Ely College will be a valued member of the wider community and a source of immense pride.

Drawing upon the Village College roots of the Trust, we firmly believe our role is to provide for all members of the community we serve. The College's facilities are open and widely used by the community, and we offer a wide range of popular adult and community education classes.

Students are given many opportunities to take a lead in the College and in their houses. They can take up a Head Boy or Head Girl role or join the House Captains, and in doing so will work towards their Leadership Pledge whilst airing their views and concerns.

Each house has a chosen charity that they support and students are encouraged to volunteer in the wider community.

Establishing close links with younger students at nearby primary schools is also important, and we will be inviting them into the College to take part in a range of sporting, science and cultural projects. Some of the College's teachers will also be attending local primary schools to provide the students with wider opportunities in areas such as languages, music, drama and sport.





ELY COLLEGE

Ely College, Downham Road, Ely, CB6 2SH

Tel: 01353 667763

Email: office@elycollege.co.uk

Web: www.elycollege.com

Twitter: @elycollege

Part of the CMAT family.



Swavesey
VILLAGE COLLEGE



NenePark
Academy



North Cambridge
Academy



West Town
Primary Academy



Stamford Welland
Academy



Sawtry Village
Academy