



BENENDEN

广州博萃德学校
B | B | S | G

BE FUTURE
WORLD READY



CANDIDATE BRIEF



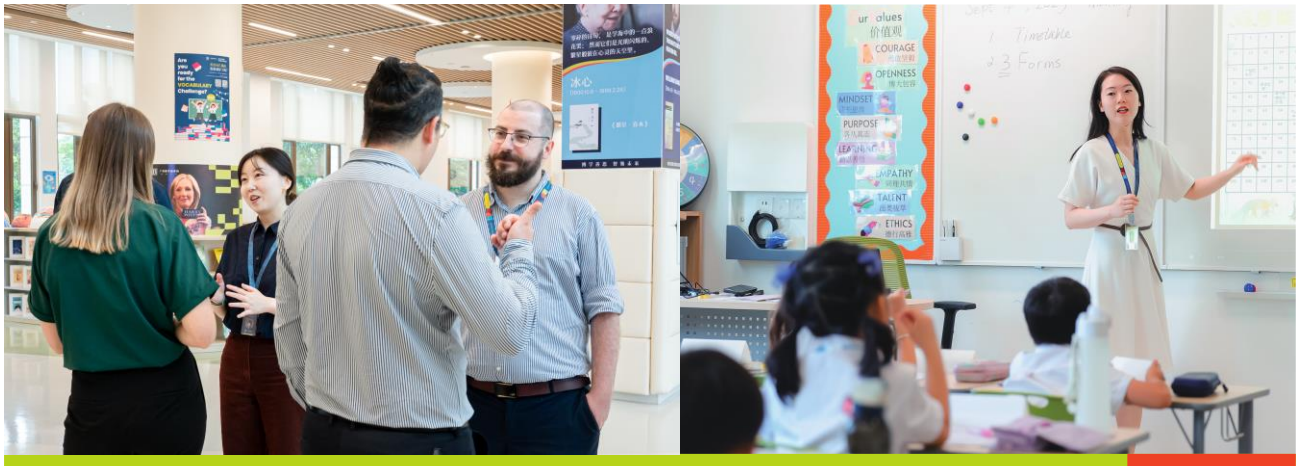
Warm Welcome to Benenden Bilingual School Guangzhou

We are delighted that you are interested to learn about our vibrant learning community located on 25 acres (100,000 square metres) in Guangzhou, Panyu District in the Greater Bay Area, China on a modern and superbly resourced campus.

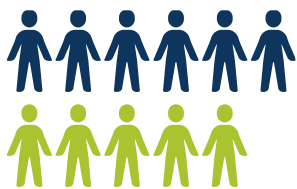
At BBSG, we are focused on achieving *Excellence for All*. We cultivate the culture of continuous improvement which allows us to raise standards in teaching, learning. This includes setting and closely referencing our academic benchmark, offering a comprehensive range of co-curricular and extra-curricular activities, providing more targeted programmes for students across core subjects, strengthening our student development programmes, and improving school-parent communication. We hope that you will join our team.



ACADEMIC FACULTY



Our faculty is a community of caring professionals who have proven success in teaching and learning within notable international and local education systems. They are also great communicators and lifelong learners who possess a strong combination of soft skills that inspire and guide individual students toward achieving their personal success.



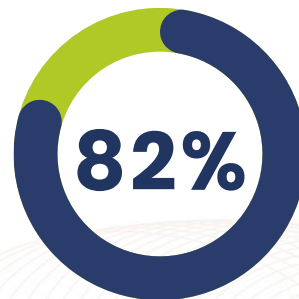
1.2 : 1

Bilingual and
Expatriate Teacher Ratio

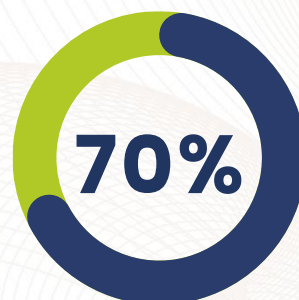


11 Years

Teaching Experience
on Average



with Overseas Teaching
or Studying Experiences



Hold a Master or
PhD Degree

PARENT VOICE

“Dora is experiencing her first time away from home as a boarding student. We see her truly growing up. She has learnt to live at school independently while juggling her studies.”



“Holly is good at expressing herself, however, her ability to think critically and logically may not have been as good. Over the course of this term, there is a notable improvement in her critical thinking skills as well as the proficiency in effectively distilling and summarising her own ideas.”

“Apart from teaching academic curriculum, such as Chinese, Mathematics, and English, BBSG has a well-designed systematic approach to educating and managing students’ behaviour. Teachers have demonstrated impressive patience and professionalism in regulating students’ behaviour like the Blue Slip and Pink Slip. This is important in nurturing students’ character, mental well-being, and positive behavioural habits that shape their future.”





EDUCATIONAL ETHOS

Benenden Bilingual School Guangzhou is the flagship Benenden school, the first school outside the UK to adopt and adapt Benenden's highly regarded 'A Complete Education' model (ACE). ACE curriculum has been developed by and for Benenden School UK so that their students can realise their academic potential, grow as individuals, and be prepared for life beyond school. ACE combines a focus on academic achievement, personal development and a firm understanding of the world in which we live.

CTFEG, a strategic partner of Benenden School UK, collaborate to develop a bespoke model of education for its Guangzhou students. Modern and dynamic in design, the model allows teachers to deliver a local and international integrated curriculum targeting individual learning and development needs of each student. Benenden School Bilingual Guangzhou stands strongly committed to providing an education that empowers the next generation to be future ready.



CTF Education Group
周大福教育集团



OUR CURRICULUM

GRADE	核心课程 Core Curriculum	特色课程 Featured Curriculum	拓展项目 Enrichment Programmes	特色项目 Signature Programmes			
				成长规划 QUEST	文化书院 Culture Academy	人文AI AI for Humanity	工作世界 World of Work (WOW)
G12	基于中国 国家课程的双语融合课程 CNC-based Core Curriculum 为外籍人员子女 开设独特的 校本课程 International Student Programme	学科桥梁项目 Disciplinary Pathway Programmes	拓展课程 CCAs 课外活动 ECAs	大学升学指导 Senior Counseling	全球交换生项目、 领导力培训 Global Exchange & Leadership Training	AI 与科技领导 AI & Technology Leadership	名企实习 Curated Apprenticeship
G11						基石项目、 AI 与创业 Cornerstone Projects, AI & Entrepreneurship	行业精英 面对面 Industry Networking
G10		幸福教育 Wellbeing		初级学涯指导 Junior Counseling	全球交换生项目、 文化浸润 Global Exchange & Culture Immersion Programmes		
G9						英文数学 English Maths	班主任沟通 Homeroom Teacher Communication
G8		英语导读 English Literacy		基石项目、编程 与AI基础 Cornerstone Projects, AI & Foundations	文化意识 Culture Awareness Programmes		
G7						STEAM 人工智能 AI	基石项目、编程 与AI基础 Cornerstone Projects, AI & Foundations
G6		主题探究 Topic		基石项目、编程 与AI基础 Cornerstone Projects, AI & Foundations	文化意识 Culture Awareness Programmes		
G5						体育 Sports	基石项目、编程 与AI基础 Cornerstone Projects, AI & Foundations
G4		艺术 Arts		基石项目、编程 与AI基础 Cornerstone Projects, AI & Foundations	文化意识 Culture Awareness Programmes		
G3						基石项目、编程 与AI基础 Cornerstone Projects, AI & Foundations	文化意识 Culture Awareness Programmes
G2		基石项目、编程 与AI基础 Cornerstone Projects, AI & Foundations		文化意识 Culture Awareness Programmes	文化意识 Culture Awareness Programmes		
G1						基石项目、编程 与AI基础 Cornerstone Projects, AI & Foundations	文化意识 Culture Awareness Programmes



Our Core Curriculum draws on the Chinese National Curriculum, delivered with pedagogies that help students achieve bilingual and biliterate fluencies. Students with Hong Kong, Macau and Taiwan IDs, and foreign passport holders, have the option to enroll in the International Student Programme.

Our Featured Curriculum promotes interdisciplinary learning in line with international educational pathways, and Enrichment Programmes are intended to develop students' personal interests and unlock their unique potential.

The standalone Signature Programmes pave the way to self-actualisation, community engagement, digital mindset and real-world connection, which make each and every individual outstanding and future-ready.

FACILITIES

The campus is designed by top architectural firms from China, the UK, and the US and equipped with state-of-the-art facilities built to cater to a wide range of world-class learning experiences.

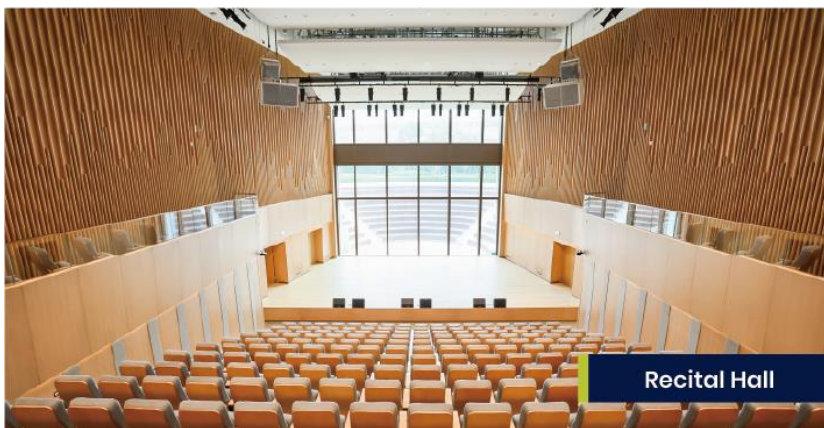
The Performing Arts Centre was constructed to meet the New York Broadway standards. The Innovation Centre featuring high-tech tools and latest robotic models, offers learning of underwater robotics, drone flying and coding, design for automotive technologies and many others. The Sports Centre equipped to host international level competitions in swimming, basketball, gymnastics, squash and many other sports disciplines. The campus and advanced facilities enable learning and creativity to take place at every moment.



Canteen



Drone Lab



Recital Hall



Classroom



Swimming Pool



Squash Court

WEN LODGE

Wen Lodge, the residence for teachers from outside Guangzhou, is next to the campus. Wen Lodge is a warm and welcoming residence equipped with all modern conveniences. The one, two- and three-bedroom apartments feature spacious balconies, and the residences has a basement carpark.

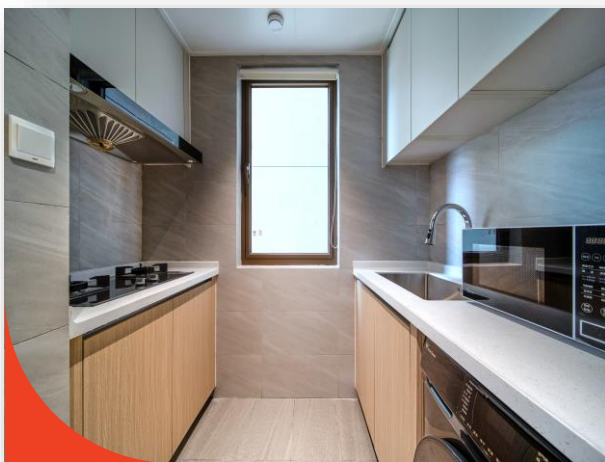
A studio is provided for a staff; for teaching couples, two-bed rooms are provided, while for those with children, three-bed rooms are available.



Wen Lodge



Living Room



Kitchen



Bedroom

THE KINDERVARSLITY HUB



BBSG campus is located within the visionary Kindersvarsity Hub shaping K-12 education experience by bringing together a community of learners, educators, researchers and industry professionals for the future of education.



The Kindersvarsity Hub creates a diverse and dynamic learning, teaching, and research community – to inspire, equip, and empower a new generation of learners. At present, the educational projects include Benenden Schools Guangzhou (BSG), the Future Education Research Institute, and the School Leadership Academy.



ABOUT GUANGZHOU

Weather

Weather in Guangzhou is generally warm and humid all year round without a clear division of seasons. Guangzhou is characterised by warm winters, hot summers, as well as sufficient rain and sunshine. Sun protection such as sunglasses and sun cream would be ideal to bring.

See monthly temperature below (2024):



Food

There are some international supermarkets, delicatessens, bakeries and butchers importing foreign foods.

Western food is available and is often cheaper than in the West.

Guangzhou offers a rich variety of Chinese cuisine such as Cantonese, Shanghainese, Yunnan, Sichuan and many Asian flavours such as Thai, Korean, Japanese and others.

Food delivery and supermarket delivery is also convenient through apps such as Meituan.



**Images sourced from the internet, for illustrative purposes only.*

RELOCATION

Teacher from overseas will receive an allowance to help you cover shipping your possessions to China which can be used for mailing packages and excess baggage, as well as for conventional shipping costs (please keep receipts for this and copies of your boarding passes).



**Images sourced from the internet, for illustrative purposes only.*

It is possible to bring a pet to China, however, it may be required to be quarantined at the quarantine station if it is from an “epidemic area” according to the latest regulations in China. You will be responsible for the cost of the quarantine and pet relocation.



**Images sourced from the internet, for illustrative purposes only.*

HEALTHCARE

Medical Insurance

BBSG provides expatriate staff medical coverage through an international medical insurance provider. The medical insurance coverage runs according to the dates of your contract. You will receive an e-booklet with related information, and you could find the nearest medical facilities on the medical insurance provider's app.



**Images sourced from the internet, for illustrative purposes only.*

Optical

We recommend that you have an eye examination before relocating to China. If you require glasses, bring a spare pair and your prescription. Opticians and optical services are widely available here. Contact lens solution is also easily available.

Medicines

If you require prescription medicines, you should bring a sufficient supply with you. Find out the generic name of the drugs in your medicine. China has a modern pharmaceutical industry, and most likely your prescription is available here, although it may have a different brand name. Prescription drugs arriving by mail can attract a heavy duty tax.

TRANSPORTATION

BBSG is located 7-minute drive from the largest train station, the South Railway Train Station, in the Greater Bay Area in China. There is a high-speed train to Hong Kong taking one hour and many other cities in China.



**images sourced from the internet, for illustrative purposes only.*

Taxis are an easy way to get around. You can book them directly on your phone via the apps such as Didi, Alipay or Baidu Map. You will also know the estimated fare before you confirm your ride.

Metro is cheap and easy to use, and the network will be very close to the School in the near future. You can purchase single ride tickets at any metro station or use prepaid metro QR/NFC system on your phone.

Buses are also very practical and cheap.

PUBLIC HOLIDAYS

There are currently seven official public holidays in China. Each year's holidays are announced about three weeks before the start of the year by the General Office of the State Council. A notable feature of Chinese holidays is that weekends are usually swapped with the weekdays next to the actual holiday to create a longer holiday period. Public holidays change every year as China uses lunar calendar.



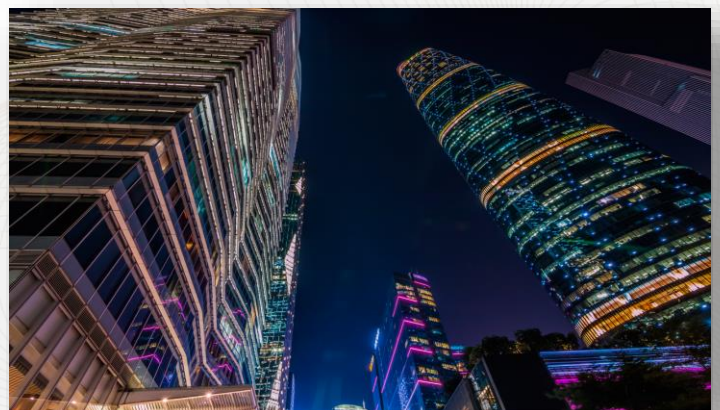
**Images sourced from the internet, for illustrative purposes only.*

Public Holiday Name	Length (without weekends)	Date
New Year	3 days	1st January
Spring Festival	8 days	1st day of January in Lunar Calendar
Tomb-Sweeping Day	3 days	4, 5 or 6th April
Labour Day	5 days	1st May
Dragon Boat Festival	3 days	5th day of May in Lunar Calendar
Mid-Autumn Festival	3 days	15th day of August in Lunar Calendar
National Day	7 days	1st October

SPORTS & LEISURE

Guangzhou offers a wide range of sports and leisure options for those who look for vibrant lifestyles. International sports events such as WTA Tennis Tournaments, China National Games were held in this city. The beautiful Baiyun mountain is a good spot for hiking and the Nansha district is favoured by aquatics sports lovers. There is a world-class gym on the campus sight as well.

Guangzhou is also a city that has both rich heritage and modern culture. You can discover the ancient artifacts from 2,000 years ago at the Museum of the Mausoleum of the Nanyue King and enjoy performances including opera, musicals, and orchestra at the Guangzhou Opera House.



**Images sourced from the internet, for illustrative purposes only.*

LEARNING CHINESE

While most local people in Guangzhou speak both Mandarin and Cantonese, Mandarin Chinese is the only official language in China. Most young adults and children speak English.

The following links are useful for learning the basics:

<http://chinesetutor.zohosites.com/>

<https://www.echineselearning.com/>

<http://www.estudychinese.com/chinesethreshold/>

<https://www.yellowbridge.com/chinese/zhuyin.php>

Some useful apps:

Pleco, Rosetta Stone (free to download)

SIGHTSEEING

Canton Tower: Guangzhou Landmark

Pearl River: Night Cruise and Bar

Beijing Road: All kinds of traditional restaurants and stores

Cantonese Opera Museum, Huacheng Square and other local attractions



**Images sourced from the internet, for illustrative purposes only.*

REMUNERATION

Package: Highly competitive salary and benefits, including housing, visa sponsorship and tuition for eligible dependents of the staff.

Location: Guangzhou, China

Contract Type: Full time

Contract Term: 3 years renewable

APPLICATION AND APPOINTMENT PROCESS

Application Process

To submit an application, please email a CV and covering letter to: careers@benendenguangzhou.cn or please contact Miss Chen for an information pack and informal discussion.

Interviews will be conducted via Microsoft Teams or in-person where feasible. In-person interviews will be conducted in various locations.



Our school is committed to safeguarding and promoting the welfare of all the students in our care and expect all applicants to share this commitment. We follow safe recruitment practice and appointments are subject to an interview, satisfactory references, identity and full background and criminal record checks.



BENENDEN

广州博萃德学校

B | B | S | G

JOIN US

✉ careers@benendenguangzhou.cn

🌐 www.benendenguangzhou.cn

📍 No.1 Bohong Seventh Road, Zhongcun Street, Panyu District, Guangzhou