



Prospectus

# Beaulieu part of our community



**Beaulieu**  
Convent School Jersey

## **Contents**

Welcome from the Head Girl **3**

Welcome from the Headmaster  
and Head of School **4**

History **5**

Our Values **6**

Why choose Beaulieu? **8**

Technology **10**

Pastoral **12**

Academic **14**

Enrichment and talents **16**

Community and charity **18**

Pre-School **20**

Primary **24**

Secondary **28**

Sixth Form **32**

The Beaulieu Foundation **36**

Contact us **38**

# Welcome to Beaulieu



**Hannah Richardson,  
Head Girl 2020–2021**

**Beaulieu has provided me with the opportunities and challenges that have shaped me into the person I am today.**

The Beaulieu community is filled with caring and nurturing qualities, which are emphasised by the Catholic ethos that we hold. The empathy, compassion and spiritual guidance help to shape every one of us into the kind natured and committed 'Beaulieu Student'.

What I love about Beaulieu is the sense that we are all individuals and support is tailored to each and every one of us; at Beaulieu, you are not just another number, the wide range of academic, sporting and artistic opportunities are second to none – there's truly something for everyone.

A crucial component of Beaulieu life is our enrichment activities. We have a variety of clubs and organisations for sporting, musical, academic, theatrical and personal challenge activities, which open up to students another host of opportunities.

We have a wonderful House system, providing structured events where anyone can take part from any year group, highlighting the inclusivity and importance of student integration.

I think Beaulieu is the perfect choice – there is an equal push for academia, pastoral care and a celebration of personal talents and the environment allows each and every student to thrive and grow, achieving to the very best of their ability.

I am honoured to take on the role of Head Girl at such a unique school.

## Chris Beirne Headmaster and CEO



I am delighted that you are interested in Beaulieu, a school that offers a unique and first rate education for all our students.

Selecting the correct school for your child is one of the most important decisions you will make as a parent. Beaulieu offers a very special blend of excellence in pastoral and academic development for every student.

Strong principles rooted in our Catholic tradition, coupled with innovative teaching methods and a keen focus on real world issues and emerging technology, all on one campus, makes Beaulieu a rich and rewarding place to learn. A registered charity, Beaulieu is carefully and passionately guided by a locally based Board of Trustees, dedicated to ensuring the future success of the School and its pupils.

I feel very privileged to be leading the School, building on the tremendous achievements of its past. The combination of our Catholic tradition, established by the Sisters of the Immaculate Conception, and the unique flavour of the School provides an education that goes beyond all academic and other achievements. Beaulieu students have consistently impressed me; they are articulate and confident young people, ready to take their place in the wider community.

Our students often talk of a warm sense of belonging. We believe this is due to the safe and stable family environment Beaulieu provides which, especially for younger students, feels very much like a home from home. It is also a place where lifelong friendships begin.

Fostering a culture of belonging and confidence is just part of a wonderful and rewarding journey for you and your child, a journey that starts on their first day at Beaulieu. We are looking forward to enjoying each step of the way with you.

## Andrea Firby Head of School



Our teachers and support staff make up a rich and diverse Beaulieu community and everyone takes responsibility for the life and culture of the

School – we go beyond simply teaching, by helping every child to have confidence and self-belief.

Whilst we have a rich tradition, we at Beaulieu are not bound, but enhanced, by it. We are a forward-thinking and outward-looking school, proud of the reputation and calibre of our education, of what we stand for, of our family ethos, and of the ways in which our students go on to positively contribute to the wider world. At the core of Beaulieu is our Catholic Faith; it is at the heart of everything we do, but 'Respect', 'Endeavour', 'Opportunity' and 'Challenge' are also values you will hear regularly, and witness at the School. Pupils are encouraged to think imaginatively, and intelligently and respectfully question convention.

At Beaulieu, we expect everyone to play their part in the Beaulieu community, whilst remaining very much an individual. The two are complementary and we recognise the importance of having a broad range of students and staff and rejoice in their diversity. The breadth of interests, talents and backgrounds of our students and staff is a key part of what makes Beaulieu what it is – a unique place to work and learn.

Our staff are dedicated, passionate and creative, making sure that each student's voice is heard and that their emotional and academic needs are met. Our staff are ambitious on behalf of our students and they endeavour to ensure that each and every student discovers, reaches and realises their potential. As a past pupil, I deeply cherish and value my time as a student at Beaulieu, so why not come and see our wonderful School for yourself.

Founded by the Sisters from the Order of the Immaculate Conception, Beaulieu first opened its doors in 1951 and has continued to thrive ever since, now welcoming more than 840 students aged 3 – 19 on one campus.

# We welcome everyone, inclusivity and diversity are core principles

**Over the years, Beaulieu has developed an excellent reputation and a fine tradition. Many past pupils choose to send their children to Beaulieu or decide to work at Beaulieu themselves.**

Whilst the Sisters themselves are no longer physically at School, we maintain a close relationship with them and they remain a constant support to us, from their base in France. The ethos established by the Sisters remains ever present at Beaulieu and we continue to place faith at the centre of everything we do. This helps to inform a positive framework of values that provide life skills on the journey beyond the classroom, into adulthood. At Beaulieu we talk about 'the roots and the fruits' – the belief that the fruits of personal and educational growth are born of the roots of our Catholic faith.

Once you are a member of the Beaulieu family, you will stay a member for life. The close relationship we

share with our students, their families and our supporters is very special to us as a family and a Catholic school.

We firmly believe we can only achieve the best for our students by working closely with parents and guardians. For this reason, we encourage our parents to share in their child's education. Joining Beaulieu is the start of a journey for you, your child and your family and we will be with you every step of the way.

*Once you are a member of the Beaulieu family, you will stay a member for life.*



**Our Values**

The Beaulieu Family places faith at the centre of our School community. The Gospel Values help us navigate social, moral and spiritual issues and are central to Beaulieu's four core values.



**Faith is at  
the core of  
all that we do**



### **Opportunity**

Our students achieve excellent academic results, but this is not our sole focus. We provide a wealth of opportunities and expect our students to embrace them. Lifelong friendships, love of learning, a passion for innovation and technology and a commitment to service, mean our students are ready for the world and eager to make a difference.



### **Endeavour**

We encourage our students to put everything into every task. We know that we are better when we work together. We look beyond the curriculum to develop a wide range of skills and talents that constantly surprise and delight teachers, parents, the community and even the students themselves.



### **Respect**

At Beaulieu, we promote respect for the School, its community and our wider society. We acknowledge diversity and are kind and welcoming to those around us.



### **Challenge**

A Beaulieu student is on a journey to adulthood. We challenge our students to be the very best they can be and encourage them to find their own voice and to question injustice and push for the highest standards.

## Why choose Beaulieu?

There are many things that make Beaulieu a special place to be and so many reasons to choose Beaulieu as the right school for you – here are just a few.

# Beaulieu at a glance



Long established links with Jersey businesses

A Duke of Edinburgh accredited centre



Accredited UNICEF Rights Respecting School



Creative, innovative and flexible approach to learning

Our in-house Chaplaincy service offers spiritual support and guidance



Opportunities for spiritual and personal development

Strong student participation through our Student Voice forums



A range of opportunities to serve the community

An exceptional pastoral service and mentor system



**Beaulieu cares for, prepares and educates young people for the modern world.**

Our faith is at the centre of our School community and helps us navigate social, moral and spiritual issues.

We provide a wealth of opportunities for our students and we nurture talents, attitudes and passions to enable all our students to succeed.

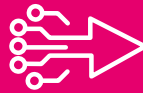
So what makes a 'Beaulieu Student'? We offer outstanding teaching in a nurturing environment, helping to develop mature, well-rounded and socially responsible young adults, ready to take their place in the world.



**Students aged 3 – 19, all on one campus**



**At the forefront of educational technology**



**Well-established House system, helping to develop leadership qualities**

**Activities Week – local and international travel**



**Boys welcome into our co-educational Sixth Form**



**An inclusive environment, with a proven academic reputation**



**Bespoke Sixth Form area, with exclusive common room and study facilities**





Technology 

# Being the first gigabit connected school in Europe is proof that we take tech seriously

Jersey businesses need the next generation of talent to help them succeed and we have responded by putting skills-based learning at the heart of the classroom.

The commercial future of Jersey relies on innovation. At Beaulieu, we play a vital role in the nurturing, developing and supplying of talent to Jersey's businesses.

# Preparing students for the digital world

At Beaulieu, we enjoy an enviable reputation, built over decades of educational excellence, through the work of skilled and dedicated staff members. This rich heritage does not mean that we stand still as a place of learning – whilst we are rooted in tradition and faith, we also look to the future. Through continuous improvements to our campus and our infrastructure, we are building a school of which to be proud – one for the digital and technological teaching and learning of the future.

Jersey businesses need the next generation of talent to help them succeed and we have responded by putting skills-based learning at the heart of the classroom.

We are very proud of our approach to technology and innovation and are very aware of the need to stay abreast of any technological developments that can aid teaching and learning and benefit our students. We are constantly evolving

and adapting to our environment and our students are confident and adept online learners.

We were the first gigabit connected school in Europe, possibly the World, and the first in Jersey to offer both campus wide Wifi and Cloud computing for our staff and students, making the transition between working at home and School seamless. We are also Jersey's first one-to-one laptop secondary school, where every child has a device to use exclusively for themselves.

We pride ourselves on being a technologically advanced school and have exciting plans for the future. Artificial Intelligence is already embedded into our services, and we have a detailed plan to further future-proof Beaulieu for years to come – a vision for the future of the School that embraces the latest thinking in educational technology and maximises our campus facilities for students and staff, whilst also remaining true to the environment and our unique Beaulieu ethos of community and care.



**The educational development of your child is, of course, our primary role, but we know it is also important to focus on encouraging their curiosity, fostering their talent and building their confidence.**

# An environment where students flourish

**Beaulieu offers a unique environment in which to learn and the mutual respect permeating through our School is rooted in Gospel values and good character, with our love and care for our students intrinsic in all we do.**

At Beaulieu, we provide a caring and nurturing environment to enable all our students to flourish and we consider the pastoral care of our students to be of utmost importance in this process. The wellbeing of our students is our biggest concern and all staff members share in the responsibility of caring for our students, all the way from Pre-School to Sixth Form.

Our staff and teachers are committed to taking a holistic view of every student – we know that confident, healthy minds have a thirst for knowledge and a love and appreciation of their community and the wider world around them. Our focus is on the

whole child and their individual needs and, as a result, every child has the opportunity to succeed.

A full induction programme has been developed for Primary and Secondary level, to ensure our students are comfortable and confident with our staff and the campus and that they fully understand and embrace our unique School ethos.

## **Year 7 students**

Students joining us at Year 7 enjoy a flexible and extended transition process to support their successful integration into Beaulieu. An extensive range of opportunities and events are provided as part of our programme to ensure the transition experience is the very best it can be. Our aim is to know our new students individually as best we can prior to them joining Beaulieu and to make sure they also know us! This transition period continues throughout Year 7 to ensure our students are happy and confident,

thriving as part of the Beaulieu community.

## **Our mentor system**

At Secondary level, every student is allocated a Mentor. These Mentors work closely with our students throughout their time with us at Beaulieu, growing to know them well and providing academic and personal guidance and support. Mentors and their students meet daily and Mentor Time provides an opportunity to cover topical issues, discuss concerns, make new friendships and develop new skills. At Sixth Form level, each student is allocated a Personal Tutor, to offer support and help make the best of the many opportunities available.

## **The Student Services Team**

Our dedicated Student Services Team cater for the wellbeing of each and every student. Each year group is allocated a full time, non-teaching Student Services Officer, available throughout the School day to assist with any pastoral

needs our students may have. In addition, the presence of our Chaplaincy service provides access to spiritual support, as and when our Primary or Secondary students may require it. This extensive support network provides our students with an environment where they feel safe and secure; a home from home where they are known, heard and understood.

### **The Learning Centre and student support**

At Beaulieu, we have an established Learning Centre, with dedicated classroom space for the delivery of support sessions, as well as a programme of targeted interventions to support students in literacy and numeracy. Our Head of the Learning Centre and the dedicated team work tirelessly across the whole School, supporting any cognitive, physical, social or emotional needs that may arise and developing specific learning programmes that most effectively meet any requirements. We are also very proud of our ELSA provision (Emotional Literacy Support Assistants), and our fully trained team of eight ELSAs focus exclusively on the wellbeing of the students in our care.

Working closely with our teachers and our Student Services Officers, the Learning Support Team collaborates with our students and their parents to determine the best educational or social programme to aid their success and ensure positive development. We also have strong

working relationships with a variety of external agencies to ensure the most appropriate and comprehensive care for our students.

### **Helping our students find their own voice**

Whether in the classroom, on the sports field or around the Island, treating everyone with respect and kindness is something our students understand and live by, but this does not mean they do not challenge or question. Finding their own voice is about speaking out and standing up for what they believe in, and this is actively encouraged.

Our School Council – ‘Student Voice’ – enables students in every year group across Primary and Secondary to have their say. Elected by their peers, Council members raise funds for charities, contribute to School improvements and address issues on behalf of the student body. Beaulieu is also a Silver accredited Rights Respecting School, working towards our Gold status.

Our thriving House system allocates each Primary and Secondary pupil and staff member a House, providing an opportunity to bond with others and compete in a range of disciplines including drama, dance, music, sport, art, debating and quizzes. Our House system is hugely popular and taken very seriously, fostering team spirit, loyalty and resilience. It also provides a valuable opportunity for interaction across all ages, building confidence and developing new friendships.

## **Introducing: ELENI AGATHANGELOU Deputy Head Girl – 2019-2020**



### **What do you remember about your first day?**

*Walking down from Mont Millais and seeing Mrs Le Fevre and Mrs Grehan. I remember I was very nervous and they helped ease my nerves.*

### **What is your favourite thing about Beaulieu?**

*The kindness, smiles and trust that the teachers provide encourage pupils to feel confident and happy whilst they learn in School.*

### **Tell us about the first teacher who made a positive impression on you.**

*I went through a stage where I felt I wasn't good at anything, but when I walked into my Drama lessons, Mrs du Bois encouraged my confidence, learning and enjoyment. I'm very thankful for all the teachers who made positive impressions on me.*

### **What is your favourite subject?**

*Drama – I was first introduced to Drama in Year 7 and loved it from the very beginning. My passion for Drama continues and I hope to pursue this as I get older.*

### **What makes Beaulieu special?**

*The feeling of community. The blend between subject help and pastoral support creates the feeling that pupils always have someone they can go to.*

### **What do you hope to do when you leave Beaulieu?**

*After I have taken a year out, my plan is to go to University to study Drama and Theatre.*

Established principles, coupled with innovative teaching methods and a keen focus on real world issues and emerging technology, all on one campus, make Beaulieu a rich and rewarding place to learn.

# Results to be proud of

**Beaulieu is an inclusive school – all faiths, backgrounds and academic abilities are very welcome. We strongly believe that this helps to bring out the very best in our students.**

Their talent comes in many varieties and is often unexpected and surprising, even to parents. Whatever shape it takes, we know that recognising and nurturing this talent fuels not only enthusiasm and self-belief, but also academic achievement.

Throughout their journey at Beaulieu, from Pre-School to Sixth Form, our students benefit from individualised and tailored teaching and support. The School environment provides a supportive place in which to learn, developing independence and resilience at the same time. Very capable students will be stretched, whilst those with specific academic needs will be fully catered for, ensuring every pupil has the opportunity to shine.

## **A holistic approach**

Our staff and teachers go beyond simply teaching, by helping all students to believe in themselves and understand the value of working hard to grow as a person and reach their full potential. This approach means that, at Beaulieu, our students consistently achieve excellent examination results, comparing very well with the best non-academically selective schools, not just in Jersey, but across the UK.

## **Exceptional results**

We celebrate the academic achievements of our students proudly and generally enjoy a 100% pass rate at both GCSE and A Level, with over 40% of our students regularly achieving grades at the highest level. These exceptional results reflect both the hard work and dedication of our students and also the commitment and support provided by our experienced and specialist teachers.

## **Learning pathways to success**

Our wide and personalised range of learning pathways and assessment approaches provide our students with the opportunity to succeed through encouragement and perseverance.



These tailored programmes enable our students to excel, wherever their strengths lie and our value-added scores are consistently high, demonstrating our commitment to nurturing and developing our students.

Whether a student's passion lies in the Sciences, Maths, English, Humanities, Languages, or they prefer ICT, Business, PE, Home Economics or the Arts, Beaulieu is ready to provide a stimulating, challenging and yet nurturing environment in which they can learn and succeed, safe in the knowledge they will be fully supported at each stage of their educational journey.

*Our track record is strong – we regularly enjoy a 100% pass rate at both GCSE and A Level.*



Our high attaining students are well catered for, supported and challenged by both their subject teachers and Mentors through tailored programmes to suit their ambitions and aspirations. Students regularly apply for very popular courses like Medicine and Veterinary Science, or highly sought after Universities such as Oxford and Cambridge. We also support students wishing to study abroad, in countries such as Australia and the US.

## Introducing: **DAISY PENDERGAST** Deputy Head Girl – 2020-2021



### **What do you remember about your first day?**

*Being excited to see my friends and looking forward to making new friends and thinking that was the moment my Secondary School journey had begun.*

### **What is your favourite thing about Beaulieu?**

*The fantastic opportunities I have been given throughout the years, from performing in School musicals, to participating in House events and being a Year 7 Buddy – there is always something great to get involved with.*

### **Tell us about the first teacher who made a positive impression on you.**

*Mrs Le Fevre. She made lessons so engaging and ignited my passion for History, which I am still enjoying as an A Level subject today.*

### **What is your favourite subject?**

*My favourite subject is Chemistry, finding out more about the chemical reactions that play a massive role in our world. I especially love learning about Chemistry at a molecular level.*

### **What makes Beaulieu special?**

*The family atmosphere – the House system, in particular, allows you to feel connected to people from other year groups.*

### **What do you hope to do when you finish School?**

*I hope to go to University to study Biochemistry.*

### **What is the most important thing you have learnt from being at Beaulieu?**

*To try your best, because there is no limit to what you can do if you are determined to succeed.*

Whilst we celebrate the examination results of our students proudly, the achievements of our pupils go far beyond just those of academic success. A student's experience at Beaulieu helps to ignite their passion, shape their future choices and enhance opportunities for them.

# Academic brilliance isn't the only thing that drives our staff and teachers

We take a holistic approach to every student and provide the opportunity to grow. This means teaching life skills beyond the classroom. We recognise that every child is unique and we strive to nurture talents and allow students to shine with an activity that sparks their imagination – whether that be chess, Scrabble or gardening!

### Specialist STEM support (Science, Technology, Engineering and Maths)

Students with an interest in STEM subjects have a range of activities available to them through our specialist Science teachers. Recent opportunities have included the launch of the Linnean Society, to instill a passion for every aspect of natural history, and the securing of a prestigious Royal Society Partnership Grant for research.

### Performing Arts at Beaulieu

We have a strong tradition of Drama, Dance and Performing Arts at Beaulieu. We

believe participating in Performing Arts nurtures our students, helping them to gain confidence and develop their team-building skills and their problem solving capabilities.

Year 6 students stage an annual production to celebrate completing Primary School, with recent shows including The Lion King and Alice in Wonderland. At Secondary level, we stage a biennial musical, with students acting, singing, playing in the band or taking responsibility for lighting, sound, costumes, set design and make up. Past performances include Legally Blonde and Singin' in the Rain.

We regularly enjoy great success in the Drama and Dance Eisteddfods, winning classes for a variety of disciplines including Mime, Scripted, Dance, Drama and Choral Speaking.

### Musical opportunities for all

We have a thriving Music Department, providing our students with every opportunity to develop their musical skills. We proudly operate a peripatetic system, where students across Primary and Secondary School can learn any instrument of their choice, and also offer a range of enrichment activities, providing ample performance opportunities for our students.

Our Junior, Year 7 and Chamber Choirs have enjoyed great success at the Eisteddfod and sing regularly at School Mass and other School events. Our Chamber Choir members have sung at Disneyland Paris, in Rome, in Barcelona and with the Jersey Symphony Orchestra.



We also run a thriving Orchestra and Big Band, providing our talented musicians with the opportunity to play at a whole host of School and local events, including the Boat Show and Food Festival, as well as consistently achieving at the Eisteddfod and the Music for Youth competition, nationally.

Rock on the Rock, our rock band academy, has provided students with the option to study with professional musicians during a week in the summer holidays, culminating in a concert at a local venue.

### **Beaulieu sporting life**

Sport and fitness is an integral part of life at Beaulieu and we pride ourselves on helping to develop enthusiastic, competitive, yet sporting team players who appreciate the value of taking part, as well as winning. All students can try a range of sports and activities, whatever their ability, in an atmosphere of support and camaraderie.

Competition for School team places is fierce, but all students can attend training sessions, providing the opportunity to develop and progress. We regularly celebrate students representing their Island and, on occasion, their country, in a range of sports.

Taking part in sport and physical activity not only fosters an appreciation of the importance of teamwork, it also builds confidence and communication skills and enhances wellbeing. Above all else, we want our

students to enjoy sport and develop positive lifestyle habits that will continue long after they leave Beaulieu.

### **A passion for creativity**

Beaulieu has a strong tradition of Art, Textiles and Photography and our students' love of art is fostered early on. This passion continues into Secondary, where students take part in activities to enhance their talents and broaden their appreciation of the art world. These include participating in workshops run by professional artists, hosting art exhibitions and fashion shows and taking trips, both abroad and on Island, to galleries and museums to inspire creativity.

### **Activities Week**

Our Activities Week is extremely popular each summer and provides the opportunity to try something new, visit a new country or further develop an existing passion, such as theatre trips to London, movie making and learning to scuba dive.

### **Duke of Edinburgh**

Beaulieu is a fully accredited Duke of Edinburgh Centre, and students in Year 9 and above have the opportunity to undertake the Bronze, Silver and Gold Duke of Edinburgh Awards. The Duke of Edinburgh Award programme enables young people to have fun, make new and lasting friendships, enhance their self-esteem and build confidence. Skills essential for the wider world are developed and Beaulieu supports our students on their journey, every step of the way.

### **Introducing: ISOBEL LAWSON**

Former Deputy Head Girl, Isobel, joined Beaulieu at seven and left after her A Levels. She is now studying at Loughborough University.



### **What do you remember about your first day of Secondary School?**

*I was just so excited to be starting a new chapter of my life, finding out what mentor group I was in and getting to know new girls who had come from schools all over the Island.*

### **What is your favourite thing about Beaulieu?**

*The School provides so many opportunities that it's possible for everyone to find their own favourite thing!*

### **Tell us about the first teacher who made a positive impression on you.**

*Mrs Perrier – her rational, yet positive reasoning taught me how to put things into perspective and learn how to see the bright side of every situation.*

### **What was your favourite subject?**

*Geography. I loved learning about the world and how it functions. However, I truly believe Drama, Music and Art subjects are so important in stimulating creativity, confidence and individuality, which are such important qualities when you move through life.*

### **What makes Beaulieu special?**

*Beaulieu is a family. No matter who you are, where you come from, or your academic and creative abilities, at Beaulieu everyone is accepted and welcomed into the community of the School.*

### **What is the most important thing you learnt from being at Beaulieu?**

*To accept everyone for who they are, and whilst doing this – to always remember to be yourself.*

We are very proud of the many varied and diverse achievements of our students, but we also encourage them to focus on the wider community, not just personal progress and success.

# Enriching the community by taking a leading role in cultural and charitable events



Our teachers and staff have a deep respect for, and love of, Jersey's unique culture and heritage, and this outlook brings out the best in our students.

We develop well-rounded individuals with a love of learning and a passion for life. To ensure this is possible, we offer our students of all ages a range of opportunities to broaden their interests, challenge themselves and give back to their community.

## Respectful and kind environment

At Beaulieu, a 'Rights Respecting' environment is inherent in our Catholic ethos, where both students and staff respect each other, our community and the wider world we live in. We are very proud to have received our UNICEF Rights Respecting Schools Silver Award and are working towards our Gold.

Our students recognise the importance of living and working respectfully in today's world and this ethos is emphasised

through dedicated Mentor sessions on being kind online, providing guidance on how to engage with social media positively for today's generation and through our School Feast Day, on December 8th, allowing a whole School focus on the history of our community and its foundations in Gospel Values, love and respect.

## Days of Reflection

In addition, our Days of Reflection are very important to us as a community, and they help our students to bond and experience and appreciate our unique, caring Beaulieu community and our Catholic heritage.

## Charitable status

Beaulieu is a charity and is registered with the Jersey Charity Commission (number 34). The Beaulieu ethos focuses on ensuring public benefit and supporting the common good through social action, and Beaulieu regularly takes part in, and leads, many charitable and cultural events that

enrich the community. We undertake extensive fundraising initiatives across the School, supporting charitable work locally, nationally and internationally and these projects are usually student led. Our students are encouraged to find their own voice, always through respect and kindness, and they are active in selecting which charities we will support as a school. Our annual School Walk charity is chosen by our Secondary Student Voice Team and fundraising at House events and special fundraising days are initiated and developed by our students.

In recent years, we have worked with Mustard Seed Jersey in support of their aid work in Romania. Whole-School fundraising takes place, with all classes contributing to raising money, preparing Christmas shoe boxes as presents for distribution and making blankets and collecting clothes. A team of Sixth Form students visit Romania annually, to help with shoe box and bread and food parcel distribution

and to offer support in care homes, youth centres and orphanages. Our students bring back their experiences and share them with the rest of the student body.

Our students also take an active role closer to home and our weekly 'Make a Difference' club has organised tea parties for our elderly Jersey residents, regularly visited care homes and supported smaller charities with sorting donations and working in their charity shops.

### Eco-Committees

We are passionate about the environment and our Eco Committees work hard to raise awareness of environmentally friendly practices to ensure our pupils grow to be environmentally responsible adults.

*We're an inclusive school, where all backgrounds and faiths are very welcome.*

## Introducing: ALISON TADIER Sixth Form Prefect 2020-2021



### What do you remember about your first day?

*My first day was in September 2007. I don't remember much but I do remember the transition from nursery to Beaulieu Primary School being very smooth and welcoming.*

### What is your favourite thing about Beaulieu?

*I adore the community atmosphere.*

### What do you hope to do when you leave Beaulieu?

*When I leave Beaulieu, I hope to attend University and do an acting course, either in the United States, Canada, or England.*

### How has your experience at Beaulieu encouraged you to become active in the community?

*Because Beaulieu holds on strongly to the Catholic ethos, I was taught to always give to those less fortunate, be grateful for what God has given me, and spread around his message. Being religious myself, I knew that I wanted to go on the annual Romania Aid trip, so that I could experience first hand the conditions there. The Catholic ethos encouraged me to go out and help, and I know I will continue this work in the future.*

### What is the most important thing you have learnt from being at Beaulieu?

*I have learnt that the best way to succeed is teamwork, speaking out and taking every opportunity.*





Beaulieu Pre-School

# Begin the journey and join the Beaulieu family

**Our Pre-School provides an inclusive and nurturing environment. Its presence offers the opportunity for the full aged 3 – 19 experience at Beaulieu and the School's full range of facilities, opportunities and expert teaching are available to ensure a calm and seamless transition to our Reception Class and right up to our Sixth Form.**

Pre-School provides the foundations of your child's academic education and an introduction to the unique Beaulieu ethos that underpins the whole School.

# Lifelong friendships start here

The staff at Beaulieu are here to ensure that you and your daughter receive the very best of care, guidance and inspiration in our Pre-School.

Our Pre-School welcomes girls aged three, who are turning four within the academic year, and our morning sessions qualify for States Nursery Education Funding. The Pre-School comprises two rooms, where each child is assigned a key worker.

## Rich curriculum supported by specialist teachers

Our Pre-School offers a rich curriculum, supported by specialist teachers, that ensures excellent preparation for our Reception Class, including sessions in: Language Development, simple Nature Study, Art, Craft, Cookery, Poetry, Music & Drama, Physical Education & Games, French, History, Geography, Science and Animal Care. There is an excellent mix of free continuous, formal and outdoor learning.

During their time at Beaulieu Pre-School, children are encouraged to rise to challenges, build friendships and develop as individuals, celebrating their own natural talents. Our priority is to nurture happy, confident children who are well-rounded, inquisitive and kind and respectful to others, more than ready to proudly take the next step into our Primary School.

## Encouraging independence

Our approach represents a holistic method of teaching and learning, linked to our Primary curriculum, which encourages children to become independent and confident. Children have a huge capacity for learning and our carefully organised and ordered classrooms promote the learning activity, where materials are easily accessible to all. They are also appropriately enjoyable and challenging, to enable children of all levels of ability to make significant progress through fun and play.

We aim to provide a high standard of individual and group care. Children are supported in various ways: by good role modelling, interaction, scaffolding, observation and assessment. We also focus on working one to one and setting up meaningful activities to support children's learning.

**This is the start of an exciting journey that goes beyond the classroom and into adulthood – creating mature, well-rounded and socially responsible young adults.**

**Excellent facilities beyond the classroom**

Our Pre-School pupils have all day access to a designated play area, separate from the Primary School playground, which includes a sand and water area. They also have the opportunity to utilise the Primary School playground and the other play facilities available to our Primary students. We place huge emphasis on the benefits of learning experiences beyond the classroom and regularly offer a range of trips and visits to complement learning and spark the imagination of our pupils.

**An individual approach**

We recognise that children develop and learn in different ways and at different rates, and that all areas of learning and development are equally important and inter-connected. This approach ensures that the Pre-School meets the overarching aim of improving outcomes and reflects that it is every child's right to grow up safe and healthy, enjoying and achieving, and making a positive contribution. We want to encourage our pupils to explore, experiment, be active, be creative, ask questions, rehearse and practise skills and negotiate with others in a safe, secure and nurturing environment.

**Parental involvement**

On joining our Pre-School, the child's whole family becomes part of the Beaulieu community, and we provide daily opportunities for parents to be involved in their child's education and care, aiming to work in partnership with parents to provide the very best for their daughters.



*The educational development of your child is, of course, our primary role, but we feel it is also important to focus on encouraging their curiosity, fostering their talent and building their confidence.*



---

Introducing:  
**ELLA LAZAREVICH**  
Pre-School student 2019-2020

---



**What do you remember about your first day?**

*I remember there being lots and lots of fun toys for me to play with.*

**What is your favourite thing about Beaulieu?**

*My class, as I really enjoy playing with all my friends.*

**Tell us about the first teacher who made a positive impression on you.**

*Miss Coutouly! Miss Coutouly cheered me up when I was sad leaving my family on the first day and even let me watch my favourite show – My Little Pony – to make me smile and help me settle into Pre-School.*

**What is your favourite subject?**

*I love Wednesdays, as it's PE and Drama day – they are my favourite subjects!*

**What makes Beaulieu special?**

*The people, as everyone is part of the Beaulieu family.*

**What do you hope to do when you grow up?**

*I would like to be a teacher, as I like helping people and also drawing.*

**What is the most important thing you have learnt from being at Beaulieu so far?**

*To care for one another! Being kind to people makes them happy.*





Beaulieu Primary

**We encourage students to speak out and stand up for what they believe in**

Our dedicated staff members work tirelessly to deliver a stimulating, rich and exciting environment where everyone feels valued and safe, where ideas can flourish and pupils can reach their full potential.

**Our aim at Beaulieu is to create a positive, stimulating, engaging and happy learning environment, where all children will achieve success and develop their potential.**

# Finding their own Beaulieu voice

Beaulieu Primary continues the Beaulieu journey from Pre-School and provides a unique and nurturing setting for our students and a real sense of belonging.

As a Catholic school, our purpose is to provide high quality learning within a happy and secure Christian environment. Gospel Values inform all we do. We treat our pupils as unique individuals, with their own skills and gifts.

In partnership with parents and the wider community, we strive to enable pupils to grow and reach their potential at every age and stage. We believe that we can only achieve the best for our pupils by working closely with parents and carers.

There are many opportunities for parents to share their child's education and visitors are always warmly welcomed into the School.

## **The start of a lifelong journey**

We look to promote a child's spiritual, moral, cultural and physical development so that, in time, they will be ready for the opportunities, responsibilities and experiences of adult life.

We also urge our children to explore, ask questions and work harmoniously, by offering opportunities for everyone to succeed; we all celebrate and share in their joy and delight. This gives the children a wonderful self-assurance and confidence to look after one another and care for their community.

Our students work together, delighting in the achievements of others, as well as their own. A Beaulieu pupil is industrious, open-hearted and courageous. We encourage them to develop strength in self-discipline and the capacity to live responsibly, making effective contributions to their community.

## **Encouraging curiosity, building confidence**

Throughout the Primary School, we encourage the children in our care to have a positive approach to learning and to believe that gaining knowledge is fun and enjoyable. Children learn best when they are happy and feel confident. We praise, we encourage and we support children. We have high expectations and a belief in a 'can do' approach to learning. We want the best for every child and they are at the heart of all we do.

## **Faith at the heart**

Christ is very much at the heart of Beaulieu Primary. We nurture and foster each individual's faith journey. We want to develop each child's ability to express awe and wonder and to show curiosity about the world around them. We recognise the importance of times of reflection, stillness and silence.

## **Fostering a culture of confidence is just part of a wonderful and rewarding journey for your child, a journey that starts on their first day at Beaulieu.**

### **Making learning fun**

We have a cross-curricular themed approach to teaching and learning. This ensures that learning is fun and allows children to make links in learning. Children, teachers and parents work together, drawing resources from the School and wider community to create a challenging, distinctive and exciting educational experience for our students. Our curriculum is wide and includes Maths, English, Science, Languages, Humanities, Drama, PE, Art, Home Economics, Music, ICT, PSHE and Careers.

We appreciate the value that being part of a school catering for students aged 3-19 brings, and this enables our Primary staff and students to gain support from subject specialists teaching across the School, as well as the use of specialist facilities in Science, Home Economics, Music and Languages.

Our curriculum at Beaulieu Primary is rich and diverse in its content and delivery. We want children to become 'readers for life', to read for both pleasure and information and our English curriculum brings reading alive for our pupils. Students are encouraged to express opinions and

ideas and listen to others. They learn and recite poetry and communicate effectively and confidently to an audience. In Maths, our students become fluent in the fundamentals, undertaking varied and frequent practice in order to increase confidence and understanding.

### **Religious Education**

Religious Education is considered central to our whole School curriculum and is about the development of a way of living which improves the quality of life for all. We also provide a comprehensive Personal, Social and Health Education programme, where students learn important social skills, empathy, self-awareness, motivation and the ability to manage their feelings in a positive way.

### **The world around us**

Science is a big part of our Primary curriculum, and we stimulate curiosity and develop both an understanding of the world around us and life skills such as observation, co-operation, perseverance and investigation.

All students, from Pre-School, have the opportunity to study French and also enjoy History, Geography, Physical Education and

ICT. Our children's lives are constantly immersed in technology. E-Safety is, therefore, of extreme importance to us and is an integral part of our curriculum.

### **Art and Performing Arts**

In Art, we offer a curriculum that will enable the students to develop their visual and tactile awareness, think critically and make informed choices about their art. In Drama and Music, all children have an opportunity to experience these subjects with specialist teachers.

### **Friendships for life are formed in our House system**

We have a vibrant House system in our Primary School and our students take great pride in taking part in a variety of activities to gain points for their House. The House system provides an opportunity to bond with students across all other year groups, building confidence, resilience and new and lasting friendships.

## School Council

We also have an active School Council, with representation from each year group. Elected by their peers, Council members contribute to School improvements, raise funds for charities and address issues on behalf of the student body.

As our pupils move on to our Secondary School, they do so with an excellent academic foundation, with deep and lasting friendships, secure in their own ability, proud of their achievements and confident to meet any challenge.

*Treating everyone with respect and kindness is something all our students understand and live by, but this does not mean they do not challenge or question.*



Introducing:  
**LARA CLAYDEN**  
Year 6 student



### **What do you remember about your first day?**

*I remember playing with my friend, Rose, who I had first met on the induction day in the summer holidays. We played with the 'Frozen' characters and have remained friends since.*

### **What is your favourite thing about Beaulieu?**

*My favourite thing about Beaulieu is my friends. I have made lots of friends at School and get on with all my classmates. We are regularly moved in class, so that we mix with everyone and not just a few.*

### **Tell us about the first teacher who made a positive impression on you.**

*Mrs Scally-Gower, as she made lots of the subjects fun to learn and I really enjoyed learning about the Egyptians and the Egyptian day.*

### **What is your favourite subject?**

*My favourite subject is English, as I enjoy writing stories.*

### **What makes Beaulieu special?**

*My friends and teachers!*

### **What do you hope to do when you finish School?**

*I would like to do something that involves writing and being creative.*

### **What is the most important thing you have learnt from being at Beaulieu so far?**

*To try lots of different things and not to worry if things are difficult at the beginning. Mrs Firby calls it 'being resilient'.*



Beaulieu Secondary

# A sense of belonging that lasts a lifetime

Beaulieu Secondary School provides a welcoming learning environment that promotes a sense of responsibility and autonomy, helping students to become successful learners, confident individuals, responsible citizens and effective contributors to their wider community.

We take the transition process from Primary to Secondary very seriously and an extensive programme is in place to ensure all students feel ready and eager to join the Beaulieu family at Secondary level.

## A rich and rewarding place to learn – our students achieve incredible things

We believe the sense of belonging and confidence gained from this process will boost the enthusiasm of our new students, fully preparing them for the next stage in their education. Personalised learning is a priority at Beaulieu and we provide bespoke learning pathways to enable students to maximise their learning. We get to know our students well, their strengths and their weaknesses, and we work with them to help them shine. Our students are at the heart of all we do.

Moving from Primary School to Secondary School can present a substantial change. Students will be given more independence, have the chance to meet new friends, experience new homework routines, join some wonderful clubs and take part in exciting trips. We are here to support our students every step of the way.

One of the most exciting prospects of Secondary School is the range of new

subjects available to study, sparking new passions, new interests and developing new talents.

### A diverse curriculum

Our Secondary curriculum gives students the opportunity to develop their potential as fully as possible, not only academically, but also socially, artistically and creatively. At the heart of the curriculum is our concern for the moral and spiritual development of each student. Our Beliefs and Values programme provides an enriching way to look at different religions and cultures and our PSHEE lessons focus on formation and development of character. We also run a comprehensive Careers programme, with regular workshops, helping to prepare students for the next step in their educational journey, or for the world of work.

We run a language carousel throughout Year 7, where, alongside weekly lessons in French, students also have

a term studying Italian, German and Spanish. Students also experience half termly ICT workshops, benefiting from six intensive skill sessions throughout the year.

We have a vibrant Humanities Department, providing a range of field trips, to bring learning to life. At GCSE and A Level, students are able to study brand new subjects, such as Business, Health and Social Care, Psychology and Sociology. Our curriculum areas are supplemented through lunchtime and after school clubs. Cross-curricular learning is strong, with subject teachers working collaboratively to bring their own subjects to life and to complement others.

It is our aim to prepare students for higher education and to enable them to play their part as confident, effective and caring members of society. To achieve this, every student studies a broad, common-core curriculum for the first two years.

**Parent collaboration is an essential part of this exciting educational journey. We see this time in a student's education as a partnership between parent, teacher and student, all working together to maximise potential and help create a wonderful and rewarding journey for every child.**

### **Making the right subject choices**

Students select their GCSE subjects at the end of Year 8, studying them over a three-year programme. These include English Language, English Literature, Maths, a Language (French, German, Italian or Spanish), Religious Studies, Trilogy or Triple Science, plus two additional subjects.

### **English and Media**

The strength of our English and Media Department lies in its team members; all are specialists, committed to helping our students reach their full potential. We deliver a range of qualifications, depending on the needs of the cohort, including English Functional Skills, English Language, English Literature and Media Studies at GCSE / IGCSE and English Literature, Media Studies and Film Studies at both AS and A

Level. Extension activities of varying degrees of challenge are offered to students across all year groups, for example, Key Stage 3 students are encouraged to enter writing competitions such as the Commonwealth Essay Prize, or the BBC's '500 Words'. Students are encouraged to develop a love of reading; there is an extensive reading challenge for all students to engage with.

### **Maths & STEM subjects**

Our Maths Department is made up of a team of enthusiastic and well qualified teachers, offering a varied curriculum to fully prepare students for GCSE and A Level. Lessons are delivered in a differentiated form to allow stretch and challenge opportunities. The whole School can also take part in the House Tables competition. Our more able students are stretched through the UKMT team

and individual challenges and are offered the opportunity to study for the Level 2 Further Maths Certificate.

Those students passionate about the STEM subjects have a range of opportunities available to them. Our Science Department is made up of specialist teachers, eager to share their love of science with their students. The Department recently secured a prestigious Royal Society Partnership Grant for research into DNA sequencing in daffodils, which has enabled our students to take part in cutting edge science usually reserved for PHD students.

### **Thriving Drama and Music Departments**

Our Performing Arts Department is run by specialist teachers, and our students throughout the School enjoy the benefit of weekly Drama lessons until Year 8. Drama and Dance are available at GCSE and A Level, with Dance and Drama & Theatre both offered at A Level.

We have a thriving Music Department and all students in Years 7 and 8 receive weekly Music lessons. Our Music GCSE then provides scope for any budding musician to flourish and our Music



Technology A Level is proving ever more popular.

### **Sport and PE**

We are proud of our very successful Physical Education Department and we strive to take our sporting provision to an exceptional level. Sport and physical activities play an important part in School life and are vital in the development of our students.

The PE curriculum offers a range of experiences to meet the needs of individual students. During Years 10 and 11, our students have the opportunity to take part in a range of activities, including yoga, trampolining and self-defense. The programmes of study provide for progression, challenge and a sense of achievement.

### **Art and creativity**

Our Secondary Art Department is run by specialist teachers, ready to provide our students with the opportunity to experience a range of media and subjects, enabling them to access Art and Textiles at both GCSE and A Level and Photography at A Level. Our Food Preparation and Nutrition Department also provides a vibrant and engaging environment for our budding chefs.

### **An environment for learning**

We have an extensive support network in place for all our students, providing a home from home experience where our students feel known, encouraged and cared for. Our Mentor system is in place to fully support our students. On arrival at

Beaulieu, each student is allocated a Mentor, who works closely with their students throughout their time with us, growing to know them well and providing academic and personal guidance and support.

Our Student Services Team is also present to support student wellbeing and each year group is allocated a full time, non-teaching Student Services Officer, available throughout the School day to offer support and guidance.

Every student is allocated to a House, and our thriving House system provides an opportunity to make friends across year groups and compete in a range of disciplines including drama, dance, music, sport, debating and quizzes. Our House system is hugely popular and taken very seriously, with the students themselves organising all House events. We are proud of this vibrant aspect of Beaulieu life, which not only builds confidence, but fosters team spirit, loyalty and resilience.

We are confident that when our students reach the end of their GCSE journey with us, they are more than prepared to take the next big step. Our students join Sixth Form with confidence and resilience, with strong and lasting friendships, ready to face the challenges the next stage in their education may present.

### **Introducing: SOPHIE BAKER Year 9 student**



#### **What do you remember about your first day?**

*I remember feeling nervous, although I was excited to make new friends. I had to go on the school bus for the first time, which made me worried, but I have made friends with students from Beaulieu and other schools on the bus.*

#### **What is your favourite thing about Beaulieu?**

*That Beaulieu have supported my in-school activities and have encouraged me with my sport outside of School.*

#### **Who was the first teacher who made a positive impression on you?**

*A teacher that made a positive impression first was my Mentor, Miss Jordan. She was patient, caring and always found a way to make me smile.*

#### **What is your favourite subject?**

*Science. The Science Department is amazing, as they allow us to do really exciting science experiments and I'm really looking forward to taking Triple Science for GCSE.*

#### **What makes Beaulieu special?**

*This is quite hard to put into words, but Beaulieu is special to me because I am really happy being here. It is a kind, loving school community that is giving me lots of opportunities.*

#### **What do you hope to do when you leave School?**

*When I leave School I would like to go into Medicine and I like the idea of Paediatrics.*

#### **What is the most important thing you have learnt at Beaulieu?**

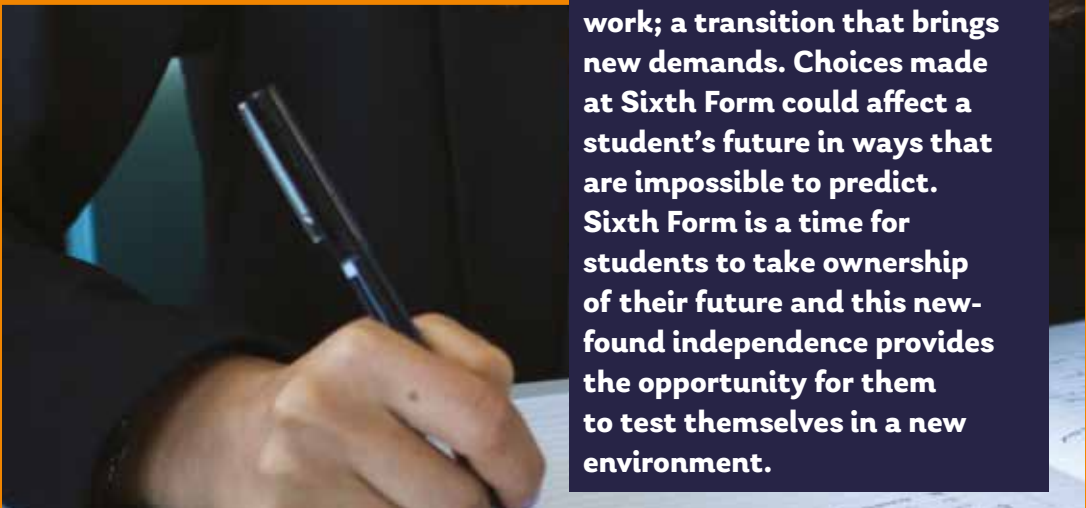
*The most important thing I have learnt at Beaulieu is how to be more independent.*



Sixth Form

# The gateway to the world of work and academia

Sixth Form is the next exciting stage in the journey to further education and the world of work; a transition that brings new demands. Choices made at Sixth Form could affect a student's future in ways that are impossible to predict. Sixth Form is a time for students to take ownership of their future and this newfound independence provides the opportunity for them to test themselves in a new environment.



**At this challenging time of decision and choice, the stability of a trusted support network can be a real asset. Teachers know our students' strengths and weaknesses well and their peers are present, enabling them to support each other.**

# Time to spread your wings

**Those new to Beaulieu in Sixth Form will benefit from a close-knit, supportive and nurturing environment. Our staff take the time to get to know every student quickly and thoroughly, and those joining at Sixth Form will experience a swift sense of belonging.**

At Beaulieu, we have a number of key aims for Sixth Form. We pledge to care for each student in a unique way and allow them to achieve their educational goals, to prepare each student for University or employment and to support students with the transition to becoming independent adults. Sixth Form provides a much more student-led approach to learning and the opportunity for independent study.

In return, we expect self-discipline and self-motivation from our Sixth

Form students. They are encouraged to take responsibility for their own learning and show commitment to both their studies and their position in the School. Our Sixth Formers are entrusted with more freedom and we look to them to become leaders within the community and role models for younger students.

## **Taking on more responsibility**

The Sixth Form provides students with the opportunity to gain in maturity and self-confidence; personal and social development is as important as academic achievement. Entering the Sixth Form is about committing to more than just attending lessons. There is an expectation that students will contribute to the wider School and become involved in key areas of School life. Important

roles are available at Sixth Form level, including being part of the House team, the Prefect team and the Student Leadership Team, and our Head Girl and her Deputies take the job of guiding other students seriously.

## **Outside the curriculum**

We actively encourage our students to participate in a wide range of initiatives to enhance their communication, team-working and critical thinking skills. These include the Duke of Edinburgh Award scheme, the Youth Assembly, the Young Enterprise Company Programme, Uniplus, the Rotary Club Peace Debate, our trip to Romania in support of Mustard Seed and a variety of local work shadowing schemes.

**Sixth Form at Beaulieu provides a more mature and independent learning environment but, for many, with the real advantage of familiar friends and teachers – trusted sources of support to guide students through the pressure and academic rigours of Sixth Form studies.**

We also believe in supporting our wider community, and our students work hard assisting in Church, as St John Ambulance volunteers, as Cadets and with various charities and support groups.

Our Sixth Formers also remain very much part of School life. Student Voice, our School Council, is chaired by our Head Girl and fundraising is high on the agenda. In addition, our House system and all it entails remains a high priority for our students at Sixth Form.

**Support and encouragement**

Each Sixth Form student is allocated a Personal Tutor and they are supported by our Student Services Team, with a dedicated Student Services Officer focusing on their wellbeing. Personal Tutors are there to provide individualised academic and pastoral support on a daily basis,

encouraging our students to make the very best of the many opportunities available, to work through any challenges and plan for the future. Sixth Form can feel academically challenging and our Personal Tutors work closely with our students to ensure they have the motivation and resilience to navigate the two years and succeed. Students meet with their Personal Tutor daily and have a dedicated programme focusing on issues that affect them as young adults including study skills, the transition to adulthood, mental health and preparing for University. We also provide a comprehensive programme of talks from a number of groups locally such as JAAR, YES, the Samaritans and Hospice, and a workshop from Positively MAD, all there to provide guidance and support.

**Excellent results and a proven track record, in an ideal learning environment**

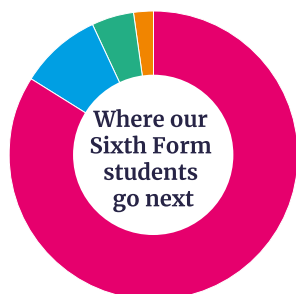
Our Sixth Formers regularly enjoy excellent A Level and BTEC results, benefiting from smaller teaching groups and the ability to study fewer subjects, but in more depth. Students regularly achieve a 100% pass rate, with over 40% of our students regularly achieving grades at the highest level. Beaulieu

offers a range of pathways and a broad range of subject combinations, to best suit each individual student. Either two or three year programmes of study are available, with students studying two, three or four subjects. We also allow the ability to mix A Levels and BTEC Qualifications or other vocational courses, as well as providing additional courses including online A Levels, resits and the Extended Project Qualification (EPQ).

Our dedicated Sixth Form Centre is a vibrant and engaging place for our Sixth Formers to study and relax. A bespoke area, exclusively for Sixth Formers, provides the space and opportunity for them to work together, discussing their subjects whilst socialising over break or lunch, with access to full kitchen facilities.

**Preparing for life beyond Sixth Form**

Careers guidance is an integral part of Sixth Form life and students must engage with our COGS programme (Careers, Opportunities, Guidance & Skills), where time is spent providing our students with individually tailored careers advice, CV writing and interview skills and assistance with University or job application and interview processes, to ensure they are fully prepared. We provide our Sixth Formers with work



- UNIVERSITY 84%
- EMPLOYMENT 9%
- OTHER FURTHER EDUCATION 5%
- GAP YEAR 2%

experience relevant to their career aspirations, wherever possible. Our relationships with local businesses are strong and our students remain highly sought after by employers locally. A large proportion of our students choose to go to University each year and we support them with their applications through our COGS curriculum. We also run a UniPlus group for those needing more tailored support and advice, for applications to very popular courses like Medicine and Veterinary Science, or highly sought after Universities like Oxford and Cambridge. We also regularly support students wishing to study abroad, in countries such as Australia and the US.

### **An emphasis on strong mental health and wellbeing**

Our Days of Reflection are an integral part of joining Sixth Form. They serve to welcome new students, re-establish the spiritual meaning of being a pupil at Beaulieu, introduce the expectations of being a Sixth Former and create a sense of unity and new balance within the year group. They provide an opportunity to meet our new Year 7 students and welcome them to the Beaulieu family; our Sixth Formers serve as transition peers for Year 7 students through the Buddy Scheme. Our Buddy

Scheme enables our Year 12 students to support Year 7 with their transition to Secondary School. The programme comprises weekly activities and provides Year 7 students with a friendly face and a supportive ear.

### **Developing the whole individual**

During Year 12, our students select electives, which provide the opportunity to develop skills and knowledge in preparation for adult life. Our ongoing aim is to ensure our students leave Beaulieu with skills that set them apart and boost their confidence. A range of physical, cultural, creative, mental and emotional activities are on offer to enable our students to learn new skills and develop the whole individual. These have included: Art Appreciation, Classic Film Club, Self-Defense, Mandarin, Mindfulness Training, Indoor Climbing, Basic Car Maintenance, Finance Qualifications and Critical Thinking and Philosophy, to name just a few.

Beaulieu Sixth Form is the place to have fun, work hard and make lifelong friendships. Our students leave us unwillingly, but as enthused, well-grounded and versatile young adults, resilient and well prepared for the pressures and opportunities of the next stage in their lives.

**Introducing:  
EMMA PREISIG  
Former Deputy Head Girl**



### **What were your favourite things about Beaulieu?**

*The plethora of opportunities and extra-curricular activities available and the sense of inclusion, friendship and support makes the community atmosphere feel like a family every day.*

### **Tell us about the first teacher who made a positive impression on you**

*Teachers at Beaulieu continue to make a positive impression on me. Their influence in Sixth Form guided me to make an informed choice about my career path. Most importantly, I evolved from being a student, to leaving Beaulieu as a young woman, prepared and equipped for the future.*

### **What was your favourite subject?**

*Home Economics, as the opportunities I was offered fed my passion and gave me confidence to share my talent and grow in my skill.*

### **What makes Beaulieu special?**

*The staff are committed to, and passionate about, finding and facilitating every student's talent. If it wasn't for the teachers' dedication, I wouldn't have found my talent – their actions and encouragement have been the fuel driving my career journey.*

### **What are you doing now you have left school?**

*I am currently studying BA (Hons) Culinary Arts Management at University College Birmingham (College of Food).*

### **What is the most important thing you learnt from being at Beaulieu?**

*I carry the values and skills Beaulieu has instilled in me to be a strong, independent woman today, remembering that no one can stop me from achieving my goals and dreams, making anything possible.*

**In 2007 we launched the Beaulieu Foundation. It was established as an independent trust in order to support the future capital development of Beaulieu and to work to safeguard and enhance the School for the future.**

# The Beaulieu legacy through the generations

**The Beaulieu Foundation is a charity and is registered with the Jersey Charity Commission (number 207).**

The Foundation has a number of priorities:

- *Building a network to reconnect with past pupils, staff, parents and friends of the School, providing a real feeling of belonging to the Beaulieu Community*
- *Providing financial support for existing and prospective students through the development of bursaries and scholarships*
- *Raising funds to support the capital development of the School's campus and facilities and to enhance curriculum and learning opportunities.*

The Foundation Team works hard to reconnect with past pupils, parents, past parents, past staff and supporters of the School. The Foundation coordinates regular networking and fundraising events for our Foundation members to enjoy. Past events have included charity balls, drinks receptions, a legacy-giving launch, afternoon tea, an event especially for our 'old boys', quizzes, book sales and reunions. The Foundation now has over 1,000 individuals registered, a figure that is continually growing.

We have ambitious plans for the future development of Beaulieu and the Foundation continues to play an instrumental part in raising funds to support this. In recent years, the Foundation worked with the School to launch the Beaulieu Campus Development Scheme, which successfully raised over £500,000 in support of our campus enhancements.

We would love you to join the Beaulieu Foundation! If you would like to learn more about the Foundation, our events and our future plans please email: [foundation@beaulieu.jersey.sch.uk](mailto:foundation@beaulieu.jersey.sch.uk)

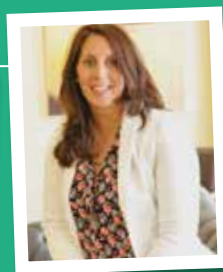
*Our students leave Beaulieu with skill sets to complement their academic achievements and it is this employability which is a genuine asset for businesses, the Jersey economy and, through the Beaulieu Foundation, the future of the School.*



*‘The Beaulieu Foundation helps to keep me connected to the School and informed about its latest developments. The events organised are always fun and the 1920’s ball was fantastic. I caught up with old School friends that I hadn’t seen for years!’*

**Vicki Charlesworth,**  
Beaulieu past pupil.

Introducing:  
**PIPPA DAVIDSON**  
Class of 2003



**What made Beaulieu special for you?**

*Stability. Community. Forgiveness. Values. I believe all those skills and encouragement have significantly contributed to the successes and resilience I have achieved as an adult.*

**What is the most important thing you learnt from being at Beaulieu?**

*More than anything, to value people and our differences, rather than just grades or achievements. To keep trying and, looking back whilst writing this, the belief that, as a girl, I could do anything.*

**What are you doing now?**

*I work within the finance industry as a director at RBC. I studied Modern History at Oxford Brookes University.*

**What is your favourite memory of Beaulieu?**

*The supportive environment, English lessons on the lawn outside in summer and Art lessons with Mrs Robson! I was delighted to be able to send my daughter to the School and I hope she makes many fond memories of her own in the years to come.*

**What’s your greatest achievement to date?**

*This is a hard question! As a mum, my first response is having my beautiful, clever and rather strong minded daughter, Mia. Mia aside, I have worked incredibly hard against personal challenges, such as dyslexia and doing so whilst, for some of those years, being a single mum. In April 2017 I was awarded Young Director of the Year by the Institute of Directors, which was a great personal achievement.*

**What are your future ambitions?**

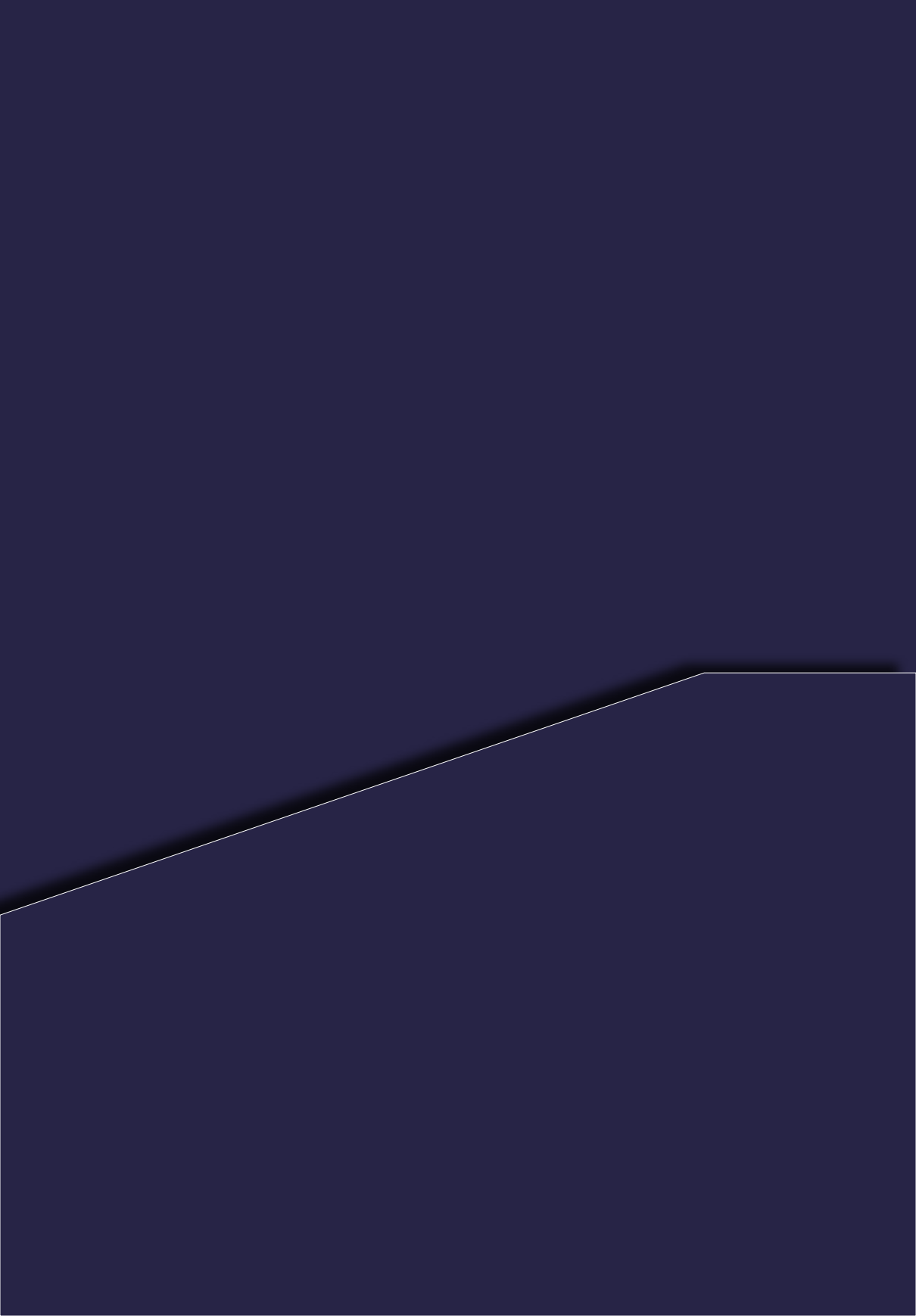
*I want to continue to mentor and find ways of engaging younger women in aspiring for senior positions – there is no glass ceiling anymore and we need to support girls to feel confident and able to speak up!*

# See you soon!

We would love the opportunity to show you around our School and let you see for yourself what a unique place Beaulieu is.

If you would like to arrange a tour, find out when our next Open Day is, or require details of our admissions policy, please contact our Registrar on:  
[registrar@beaulieu.jersey.sch.uk](mailto:registrar@beaulieu.jersey.sch.uk)





[www.beaulieu.jersey.sch.uk](http://www.beaulieu.jersey.sch.uk)



Beaulieu Convent School,  
Wellington Road,  
St Helier, Jersey JE2 4RJ

01534 731280



**Beaulieu**  
Convent School Jersey