

PROSPECTUS



WILLOW PARK SCHOOL

Dream. Believe. Exceed

www.willowparkschool.warwickshire.sch.uk



Welcome

A warm welcome, to you and your family, from our Directors, Olly and Kim.



KIMBERLEY PRESTON

Director and Head teacher

- **SENDCo**
- **Designated Safeguarding Lead**

I am so proud to be the Head teacher at Willow Park School. I have worked with children with SEN for many years and it is my pleasure to welcome children at Willow Park School and watch them grow and develop their independence and communication.

As a Director, I opened Willow Park School due to my passion to work with children with ASD and Speech and Language difficulties, having spent many years in mainstream education as a SENDCo and seeing how challenging it can be for these children without the right setting. I strongly believe we have the right setting for them here at Willow Park. I'm a **Qualified Teacher and SENDCo**

OLIVER PRESTON

Director and Business Manager

As the Business Manager I support the Principal and Head teacher by overseeing the business and its operations. Willow Park School is an exciting place, with dedicated staff supporting children with their educational development and their EHCP progress.

Kimberley and I opened Willow Park School to children at the beginning of 2024. As a Director, I am proud of the opportunity we are providing for staff and children to thrive at Willow Park.

Contact us

At Willow Park School **we love to listen!**

Don't hesitate to get in touch with us, we would love to hear from you. Please send us an [email](#), give us a [call](#) or submit the enquiry form on the website and we will get back to you.

www.willowparkschool.warwickshire.sch.uk

Telephone - [School Landline 01788 524683](#)

[School Mobile 07380 956651](#)

Director and Head teacher - **Kimberley Preston**

- email - kpreston@willowparkschool.warwickshire.sch.uk

Director and Business Manager - **Oliver Preston**

- email - opreston@willowparkschool.warwickshire.sch.uk

Principal - **Alex Smythe**

- email - asmythe@willowparkschool.warwickshire.sch.uk

School Address

Willow Park School,
Newbold-on-Avon Rfc,
Parkfield Road, Rugby,
Warwickshire
CV21 1EZ



Company Number **12346730**

Registered office address

Willow Park School Limited

50 Percival Road,

Rugby,

England,

CV22 5JT

Communication

We warmly welcome parents and carers into Willow Park School, believing we are partners in the education of your children. There are many opportunities for parents/carers to become involved in the life of the school and to gain a greater understanding of its work. We communicate in various ways, primarily through newsletters and regular email updates.

We report to parents/carers about progress and learning on a termly basis, through parent's evenings, pupil profiles and an annual written report. Staff are always happy to meet to talk through any concerns and can be contacted through email.

The school's website has a wealth of information including relevant newsletters, copies of key policies and curriculum information.

The School Team

Senior Leadership team

Alex Smythe

Principal

- Strategic direction of the school

asmythe@willowparkschool.warwickshire.sch.uk

Kimberley Preston

Director / Head teacher

- Class Teacher
- Designated Safeguarding Lead

kpreston@willowparkschool.warwickshire.sch.uk

Oliver Preston

Director / Business Manager

- Business Operations

opreston@willowparkschool.warwickshire.sch.uk

Teaching and Learning Team

Jayne White

Class teacher

Samantha Brown

Teaching Assistant

Helen Culling

Teaching Assistant

Kirsty Madely

Teaching Assistant

Karina Smith

Teaching Assistant

Chloe Nicholls

Teaching Assistant

Nicky Faith

Teaching Assistant


Joy Whitmore (Volunteer)

HLTA

Wendy Pritchard (Volunteer)

Teaching Assistant

Our Vision, Our Mission and Our Aims



WILLOW PARK SCHOOL

RUGBY

exceed
dream
excellence

independence stimulating nurturing understanding inclusive

believe
limitless
confidence potential empowerment

VISION

Willow Park School, based in Rugby, is an Independent SEND (Special Educational Needs and Disability) school for primary aged children aged 5-11. Our children are referred to us from the Local Authority.

We specialise in supporting children with SEND including those with **Autism and Speech, Language and Communication needs**.

Through our curriculum, teaching and learning opportunities, we intend to create an **inclusive, nurturing, and stimulating** educational environment where every child is empowered to unlock their **limitless** potential. We are dedicated to fostering **independence, confidence, and a love for learning**, ensuring that each child is equipped with the skills needed to thrive both academically and socially, thus enabling them to **Dream, Believe and Exceed** what otherwise might not be expected of them.

Mission: With children at the heart of everything we do, we want to support and motivate children with a unique approach to develop confidence and independence. We will endeavour to reinvest profits back into the social enterprise of Willow Park to maximise the social, emotional and educational well-being of the children.

Aims:

1. To prepare children to be the best they can be in readiness for their steps in the future
2. To create a safe, supportive, and vibrant space for children to develop and achieve.
3. To celebrate each child's uniqueness, individuality, talents and achievements.
4. To build strong and positive relationships with families, specialists and the wider community.
5. To support each child to develop their independence, communication skills and develop the whole child is central at Willow Park.
6. To give staff high quality opportunities and training that will enhance the learning culture for our children.

Our School Values

Responsibility – we take care of ourselves, others and the environment.

Enjoy - we enjoy learning.

Self-belief – we have confidence in ourselves. We can do it!

Positive - even when it's tough, we can shine and achieve extraordinary things.

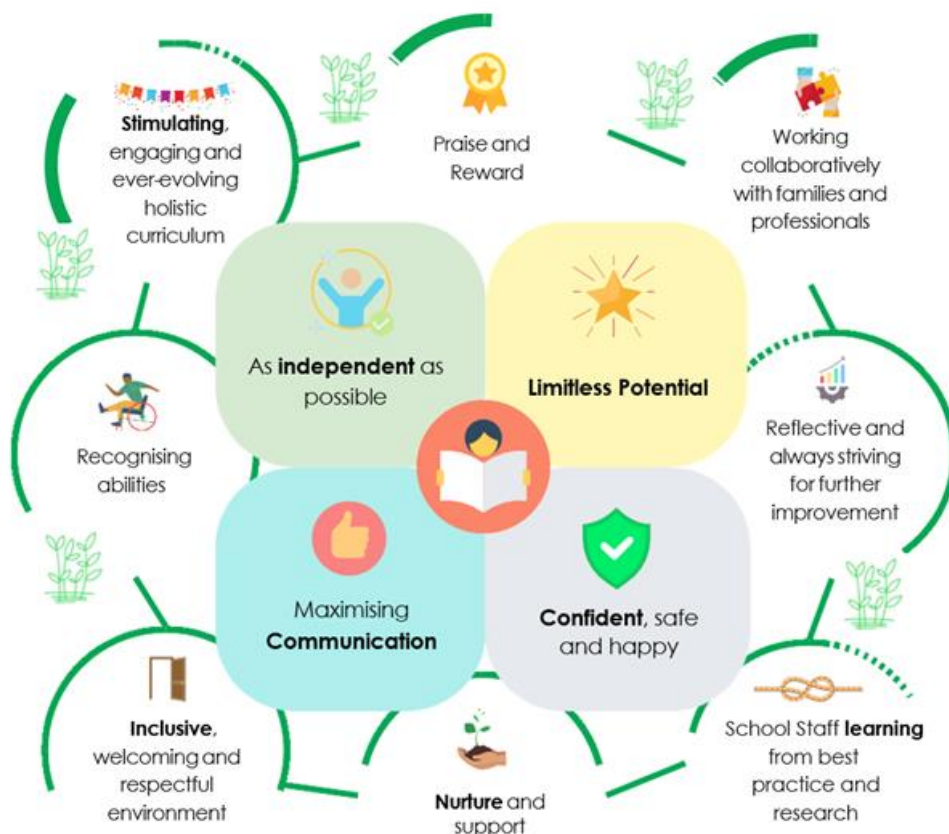
Excellence - we try our best.

Communicate – we take our time to communicate the best way we can.

Teamwork – we work together to achieve our best.

Our Curriculum

Willow Park Commitment to Excellence:



We are committed to excellence in all we do. Through ongoing evaluation and a commitment to innovation, we strive to continuously improve our curriculum and teaching practices to better serve our pupils and their families.

Children at Willow Park School will receive a broad and well-balanced curriculum, adapted to the needs of each individual child. The curriculum will strive to open doors for children enabling them to grow and succeed new challenges they may face, by giving them the skills and knowledge needed to do so.

The curriculum has a practical learning focus and develop key skills for life. Children will have experiences to motivate, reinforce and excite them to succeed. All traditional subjects are taught to the children, however the delivery of the curriculum will differ and be tailored to individual children. The school has a child-centred approach to teaching and learning and thus the curriculum is flexible to the needs of the children.

At Willow Park, children move the phases of our curriculum on the basis of 'stage, not age' so we ensure 'readiness for learning' when determining the most appropriate curriculum pathway for each child.

Communication is vital to the development of all pupils at Willow Park. We have various approaches to supporting them:



Wider Curriculum

At Willow Park school we have facilities for children to enjoy cooking lessons and outside areas within the community. There is access to playing fields just outside our building where children will have space to explore and investigate their surroundings. Outdoor Learning gives children opportunities to develop their independence, social and physical skills. All children will also have access to our kitchen for cooking lessons where learning is fun and engaging whilst supporting their social and independent skills for life.

Meals and Drinks

As we do not have the facilities at Willow Park to provide hot school meals on site, children need to bring in their own packed lunch for the day. They will be provided with milk and water throughout the day and will be encouraged to access this independently. We will also provide a healthy snack in the morning.

School Uniform

At Willow Park School we do not have a uniform.

Please ensure your child is dressed sensibly for school activities and the weather. Keep clothing plain as it may get messy!

Suggested clothing

- Plain t shirts and tops
- Shorts or leggings
- Trousers
- Trainers
- Comfortable flat shoes
- Jumper or cardigan
- Sun hat (in the summer)
- Coat
- Hat, scarf and gloves (in the winter)



Inclusion



At Willow Park School we aim for all our pupils to flourish by providing equal opportunities and access to the curriculum for all pupils whatever their ability or additional need. On occasions some pupils may need extra support to help them achieve their full potential.

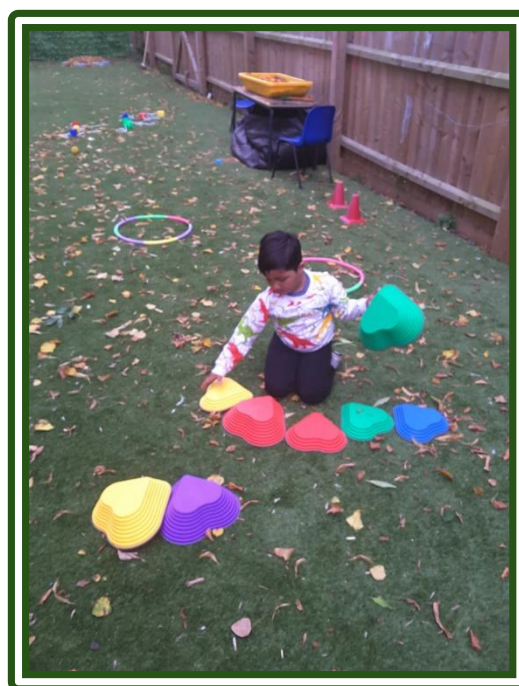
As well as the classroom teacher, we have teaching assistants and together with the directors will work together with outside agencies to ensure well rounded happy learners.

Our school is an inclusive school. We aim to make all pupils feel included in all our activities. We try to make all our teaching fully inclusive. We recognise the entitlement of all pupils to a balanced, broadly-based curriculum. We have systems in place for early identification of barriers to their learning and participation so that they can engage in school activities with all other pupils. We acknowledge the need for high expectations for and of all children.

Equality

At Willow Park School, we actively seek to encourage equity and equality through our teaching and our employment practices. As such, we seek to advance the equality of opportunity between people who share any of the following characteristics:

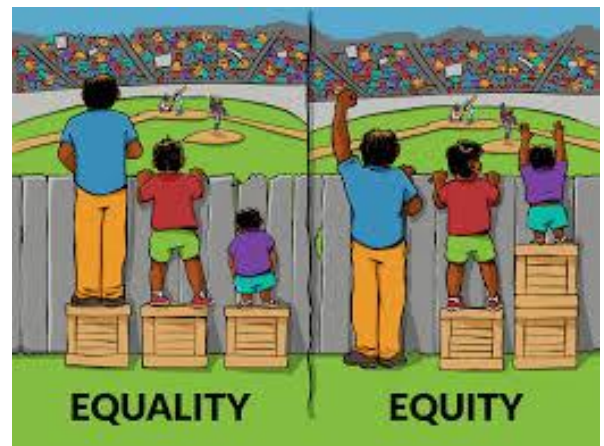
- age
- disability
- gender reassignment
- being married or in a civil partnership
- being pregnant or on maternity leave
- race including colour, nationality, ethnic or national origin
- religion or belief
- sex
- sexual orientation



The use of stereotypes under any of the above headings will always be challenged.

Equality Vs Equity

Whilst, at Willow Park, we understand our Equality duties, we provide equity to staff and pupils. Put simply, equality means treating everyone the same way, irrespective of factors such as status or identity. Equity, on the other hand, means **treating people differently in certain circumstances for equality of opportunity to be possible.**



Creating equity is important within society as it puts pupils on a more level playing field, leads to better social and economic outcomes across wider society, allows pupils to feel more engaged and looked after, and leaves staff feeling more confident that they're succeeding in their role.

Safeguarding

Safeguarding and promoting the welfare of children at Willow Park School means:

- Providing help and support to meet the needs of children as soon as problems emerge
- Protecting children from maltreatment whether that is within or outside the home, including online.
- Preventing impairment of children's mental and physical health or development
- Ensuring that children grow up in circumstances consistent with the provision of safe and effective care
- Taking action to enable all children to have the best outcomes

In order to achieve this, we have policies and procedures covering all aspects of school life, which ensure that Safeguarding and Child Protection are the most important aspects of our work.

To contact the **Designated Safeguarding Lead (DSL)**, Kimberley Preston at Willow Park, please email safeguarding@willowparkschool.warwickshire.sch.uk or call [01788 524683](tel:01788524683)

Worried about online safety?

See our website for helpful tips and support.

Safe Medical and any other issues including

Medication

Medication

When pupils start school, and as appropriate, parents are asked to complete a form outlining any medical history, including any allergies suffered, that we should be aware of. It is important that this record including contact details is kept up-to-date. Any changes should be immediately brought to the attention of staff at Willow Park School.

The school has responsibility for the safety and welfare of pupils and regularly reviews arrangements to ensure that the medical needs of the pupils are met at school.

Where medication needs to be administered at school, **parents are asked to complete a medical consent form** so that we can draw up a Care Plan to keep their child safe.

Basic First Aid

Basic first aid is given at school when necessary by qualified First Aiders. If the school deem that further medical attention might be needed, parents will be contacted. If an accident needs hospital attention, we will make every effort to contact parents. We ask parents to ensure all contact details are kept up-to-date so that we can make contact in an emergency. All injuries are recorded. The consent form completed by parents when their child starts at Willow Park, details everything you need to know about our first aid responsibilities.

SPECIAL EDUCATIONAL NEEDS AND DISABILITY

PROVISION AT WILLOW PARK

We specialise in supporting children with SEND including those with Autism and Speech, Language and Communication needs.

The School's **SENDCo** is Mrs **Kimberley Preston**

To find out about our SEND Provision at Willow Park, please see our website <https://www.willowparkschool.warwickshire.sch.uk/send>





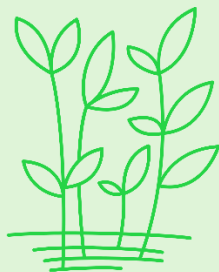
WILLOW PARK SCHOOL

RUGBY

exceed
dream
understanding
excellence
inclusive

believe
limitless
potential
empowerment
confidence

independence
stimulating
nurturing



WILLOW PARK SCHOOL

Dream. Believe. Exceed

