



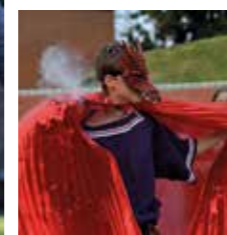
King's College

TAUNTON

Assistant Head (Teaching and Learning)

Closing Date | Thursday 29 February 2024





Welcome

Thank you for your interest in the role of Assistant Head (Teaching and Learning) at King's College.

This Assistant Head role is the perfect next step for someone who may have excelled leading an academic department or faculty to gain whole school strategic knowledge, experience and reach. This role has become available as the current outstanding incumbent has been promoted to the position of Deputy Head Academic at Sherborne Girls.

The Assistant Head (Teaching and Learning) is an exciting and incredibly important senior position within the school. Serving on the Senior Management Team and reporting directly to me as Headmaster, you will help shape the vision and strategy of the school.

King's College promotes a lifelong love of learning for its own sake, not simply to pass an exam. Pupils are encouraged to develop and grow their intellectual curiosity, to read widely around their subject areas and to think deeply. Excellent teaching and cutting-edge pedagogy facilitates this growth mindset and the Assistant Head (Teaching and Learning) plays a crucial part in ensuring this culture is fully embedded across the school.

This position is an exciting opportunity for someone who has a passion for learning, combined with the ability to inspire pupils and staff, and the willingness to support the ambition, values and breadth of school life. Working closely with a committed senior leadership, this is an opportunity to join King's at the start of a new chapter and to make a real and lasting difference to the lives of young people.

I look forward to hearing from you and considering your application.

MICHAEL SLOAN
Headmaster



“ In their everyday lives around the school, our pupils show the confidence to succeed, and the determination to give their very best. ”

About the Schools

King's provides continuous day and boarding education for girls and boys aged two to 18 years. It comprises King's College Prep which has approximately 300 children from 2 to 13 and a senior school with approximately 450 pupils from 13 to 18.

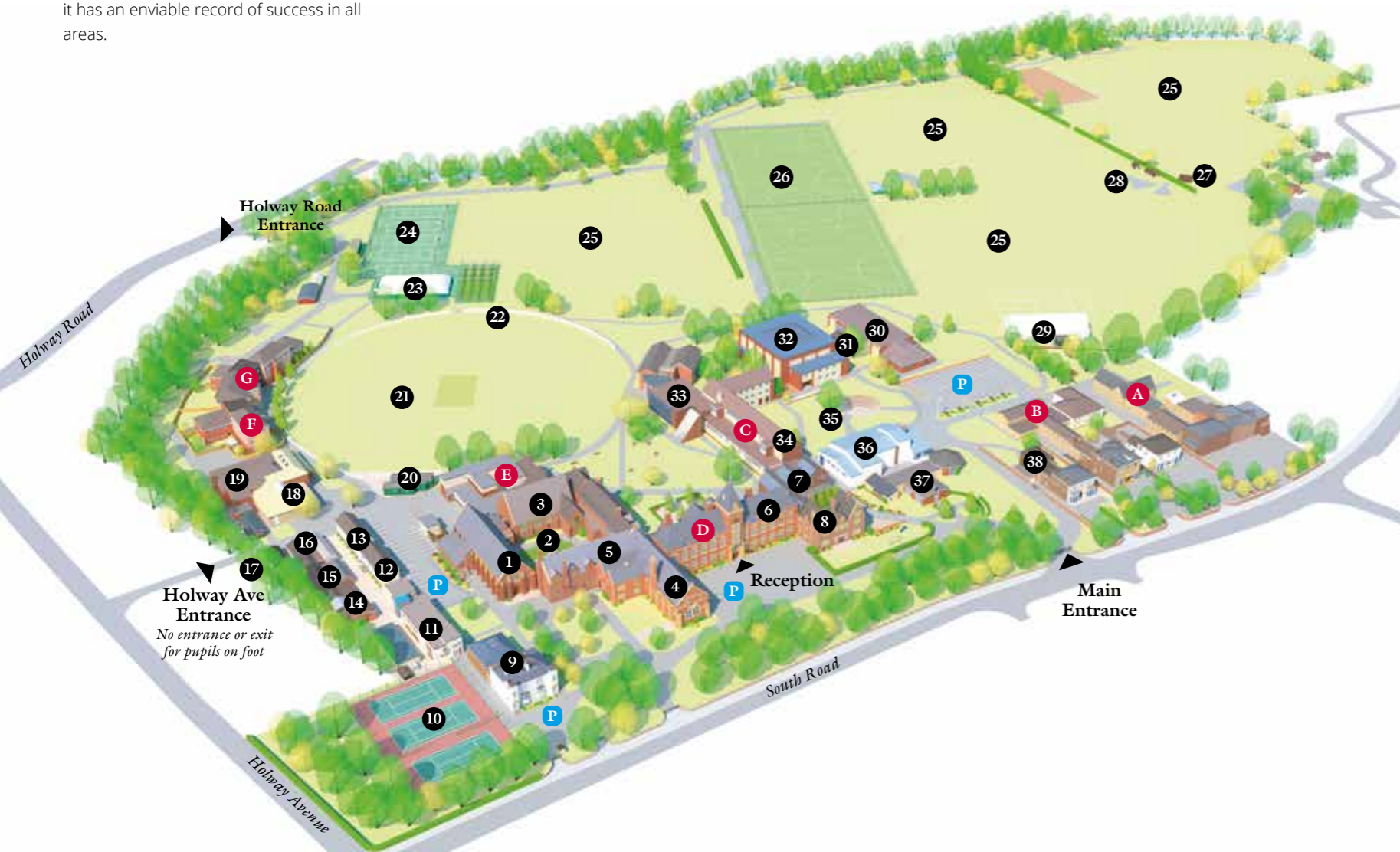
The schools are situated on separate sites in the south west of England and combine traditional values with state-of-the-art facilities. Both schools are run by one governing body, with many functions (marketing, strategy and finance for example) undertaken jointly.

King's College has a rich and welcoming family and community ethos. Just over 60% of the pupils board. For a relatively small school, it has an enviable record of success in all areas.

The school has regularly topped GCSE and A-level league tables for Somerset. A broad range of co-curricular activities is offered, and the school is renowned for its success in sport, music, performing arts, fine art, design technology and outdoor pursuits. In many of these activities our pupils have achieved success at national and even international levels.

Good discipline is encouraged in a firm and positive way within a supportive pastoral framework. King's College is strong on manners and social skills. Pupils go on to thrive at good universities and in their professional careers.

In short, King's is a purposeful, outward-looking, down-to-earth, highly successful school.



King's College

South Road, Taunton TA1 3LA

Main School Building	14 Laundry	33 Science Centre
1 The Chapel	15 Shooting Range	Biology
2 The Quad	16 CCF and Outdoor Pursuits	Chemistry
3 Dining Hall	Stores	Physics
4 Woodard Room	Chindits	History
5 Latin	Army/Navy/Marines	34 Geography Centre
English	17 Finance Office	35 The Amphitheatre
Philosophy of Religious & Ethics	18 Design Technology Centre	36 The Theatre
Modern Foreign Languages - <i>upstairs</i>	19 Squash Courts	Black Box
6 Main School Corridor	20 First Team Cricket Pavillion	Auditorium
Headmaster's Office	21 First Team Cricket Pitch	37 Music School
PA to the Headmaster's Office	22 Buttler's Ramp	The Octagon
Examination Office	23 Tennis and Netball Dome	Music Technology
Admissions Office	24 Tennis and Netball Courts	Practice Rooms
Careers Office	25 Sports pitches	38 Medical Centre
Maths	(rugby/cricket/athletics/football)	
7 Philip Richards Building	26 All-weather Hockey Pitch	A Bishop Fox House
Library - <i>upstairs</i>	27 Cricket Pavillion	<i>Boys</i>
IT Helpdesk	28 Athletics Cabin	B Carpenter House
Visitor toilets	29 Sports Performance & Cricket Centre	<i>Girls</i>
8 Headmaster's House	30 Swimming Pool	C Meynell House
9 Silvermead Studio and Arts House	31 Changing Cabins	<i>Girls</i>
10 Briar Lee Tennis Courts	32 Sports Hall	D King Alfred House
11 Sixth Form Centre	Climbing Wall	<i>Boys</i>
Head of Sixth Form Office	Gym	E Taylor House
Development Office	PE Classrooms	<i>Girls</i>
12 School Uniform Shop		F Woodard House
13 Cookery School		<i>Boys</i>
		G Tuckwell House
		<i>Boys</i>

A Rural County of Rolling Hills

Taunton is surrounded by natural beauty, with the Blackdowns, Mendips and Quantock Hills on the doorstep, plus Exmoor National Park, the Somerset Levels and Dartmoor are a short drive away.

Somerset is renowned for its cheddar cheese and cider. A wealth of apple orchards once made Somerset the cider capital of the UK, whilst the Cheddar Gorge caves are still used to mature cheese today.

Taunton is the county town of Somerset, in the South West of England. It is a busy market town located between junction 25 and 26 on the M5.

A growing commercial and residential centre, Taunton has a splendid small theatre, the County Cricket Ground, a successful rugby club, a delightful museum, the usual shopping outlets and restaurants, and a regular farmers' market.

If you love the great outdoors, you can be on the beach in 40 minutes and the Quantocks are just 15 minutes away. For those who prefer city lights, the fast West Country train service reaches Paddington in under two hours. By car, Exeter is 25 minutes south, Bristol 35 minutes north and you can reach Bath in about an hour.



The Role

POST: Assistant Head (Teaching and Learning)

RESPONSIBLE TO: Headmaster

JOB FUNCTION

The Assistant Head (Teaching and Learning) will, in conjunction with the Headmaster, develop strategies to ensure excellence in teaching and learning standards.

GENERAL RESPONSIBILITIES

- To provide strategic thought and input to shape the future direction of the school and to maintain and grow the outstanding provision of education on offer at King's College.
- To collaborate with the Headmaster and Deputy Head Academic to develop and implement the school's teaching and learning strategy.
- To be a member of the Senior Management Team, answerable to the Headmaster.
- To work closely with other members of the Senior Management Team so that all major areas of pupil life are fully supported and staffed - academic, pastoral and co-curricular.

SPECIFIC REONSIBILITIES

TEACHING STRATEGIES

- Continue to develop strategies to improve teaching provision across the school to increase the number of engaging lessons with suitable academic challenge.
- Continue to engage teachers with evidence-informed practice.
- Stay on top of trends and developments in digital learning, including GenAI, and ensure the school policies relating to its use remain relevant and current, and are updated in a timely manner.
- Assist in the continuation of the school's paper-less strategies, including continuing to support teachers through arranging CPD sessions on OneNote, Teams or other relevant applications as needed, and liaising closely with the Network Manager.
- Attend and contribute to the termly Governors' Education and Pastoral Committee.
- Sit on the IT Strategy Group to collaborate with colleagues in steering the school's IT strategy.
- Undertake learning walks in specific departments, or for individual staff, and undertake coaching conversations to help professional development.
- Conduct occasional learning walks in conjunction with Head of EAL and Head of Learning Strategies to inform CPD needs and enable feedback to teachers on best-practice. Develop a CPD plan/strategy with Head of EAL and Head of Learning Strategies to improve 'Ordinarily Available Provision' across the school for SEND and EAL learners.
- Embed the school's new values-based framework and develop signposting to research, blogs, CPD and so on.
- Have an overview of the use of baseline data, and support teaching colleagues and the Heads of Year in interpreting the data and using it to inform on pupils who need support or intervention.
- Develop the use of the 'Creative Learning Space' (a classroom designed to support innovative and engaging teaching).
- Maintain a 'Teaching and learning' noticeboard in the staff common room, and for pupils in the main corridor.

The Role

STAFF DEVELOPMENT AND TRAINING

- To encourage and facilitate the professional development of all staff and to oversee the annual INSET programme and ensure that it reflects the needs of the staff as highlighted by the annual review process.
- To maintain a log of staff INSET, as required by the inspection process.
- To grow and maintain links and opportunities for staff with the various King's College International Schools.
- In conjunction with the Headmaster and Deputy Head Academic, to participate and contribute to the review of public examination results with each of the school's Heads of Department.

BUDGETING AND RECRUITMENT

- To manage the INSET budget to ensure that resources are fairly and thoughtfully utilised to develop the skills of staff in all aspects of school life – teaching and learning, professional development, pastoral, co-curricular and academic leadership.
- To play a key role in the appointment of new staff, liaising with the HR department and to be part of the interview process.

REMUNERATION AND ALLOWANCES

- The post will be remunerated in line with the skills and experience of the successful candidate.
- The post-holder will be afforded a significant timetable reduction to allow them sufficient time to undertake the role successfully.

NB: Safeguarding is everyone's responsibility.

This job description is subject to review in line with the developing needs of the School

Person Specification

	Essential Criteria	Desirable Criteria
Qualifications	Degree level qualification	Subject specific training courses
	PGCE or equivalent teaching experience	Further qualifications in education, educational leadership or teaching and learning
Knowledge & experience	Ability to teach their chosen subject to A-Level	Experience of teaching to A-Level
	Understanding of how to ensure all pupils thrive in their chosen subject, and develop their love for that subject	Experience of developing teaching pedagogy and competencies within a school
	Subject specific skills and/or experience relevant to the subject	Experience of running INSET
	Reflective about your own pedagogy and willing to share best practice with others	
Skills	Able to form and maintain appropriate relationships with the pupils in your care	Good IT skills
	Efficient and effective administration and organisational skills	The ability to coach one or more of the major sports offered at King's to a good level, and the desire to develop your coaching qualifications and experience through further training (in particular cricket, hockey, netball and/or rugby coaching)
	Willingness and ability to contribute to the co-curricular programme at King's	
Personal qualities & abilities	Personable, with a sense of humour	
	Patience, kindness, resilience and the ability to be firm but fair	

The qualities and experience outlined in the person specification will be assessed by the following methods:

- Sight of original qualifications
- King's College application form
- Interview, including teaching a lesson
- References from current employer and other, chosen, professionals

Appointment Process



Candidates are expected to have read the enclosed appointment policy and agreed to the terms within.

King's has its own pay scale and there are discounts at both King's College Prep and King's College for staff children.

Please apply by completing the appropriate King's College application form (we are unable to accept CVs without our application form).

Please write a brief letter of application, addressed to the Headmaster, including a breakdown of your current remuneration package and send by email or post to:

Mr Craig Sweet/Mrs Sarah Matthews
c/o HR Department
King's College, Taunton, Somerset TA1 3LA

CSweet@kings-taunton.co.uk
SLMatthews@kings-taunton.co.uk
01823 328105/328231

The closing date for applications is Thursday 29 February.

Interviews will be held in the week beginning 4 March.



King's College
TAUNTON

South Road, Taunton, Somerset TA1 3LA
01823 328200 | reception@kings-taunton.co.uk

www.kings-taunton.co.uk