

BRIGHTON COLLEGE



Join us:

Housemaster/Mistress of a boys' day house

CLOSING DATE: 9:00am 4 MARCH 2024



UK
SCHOOL OF THE
DECADE

THE SUNDAY TIMES

About the School

Brighton College is a fantastic place to work. As the leading co-educational school in the UK we are renowned for our innovative policies and our excellent academic results, whilst placing kindness and community at the heart of our approach to education. Named 'UK School of the Decade' by *The Sunday Times* in November 2020, we educate 1,200 pupils between ages 11 and 18.

Established in 1845, the College has grown exponentially since 2006 when Richard Cairns became Head Master. Since then we have moved from 147th in *The Sunday Times* results table, to 3rd – the best position ever achieved by a co-ed school. The school site in Kemptown has seen the addition of new facilities, sustainably designed by leading international architects. These include the Music School and Sarah Abraham Recital Hall (2015), the Yeoh Building teaching complex (2017) and the School of Science and Sport (2020). World-class facilities enable us to share a huge variety of opportunities with pupils

and allow for innovative and exciting approaches to teaching and learning.

We believe that we are a part of society, not apart from it, and so activism and community involvement are key parts of the curriculum. We have a thriving volunteer programme, driven by pupils, and are proud of our progressive stand on diversity, equality and inclusion. We have a dedicated Head of D&I to help enrich all aspects of life at the College, and are committed to providing diverse role models for pupils.

Brighton College also has a family of schools, which includes our three prep

schools – Brighton College Nursery, Pre-Prep & Prep; Handcross Park; and St Christopher's. To date, we have opened schools in Abu Dhabi, Al Ain, Dubai, Bangkok and Singapore.

Our approach to education is regularly celebrated. We've been named 'School of the Year' twice by *The Sunday Times* (most recently in 2019); *The Week* named us 'Most forward-thinking school in Britain' for two years running in 2017 and 2018, and 'Best in the UK for STEM' in 2020; *Tatler* awarded Richard Cairns the title of 'Headmaster of the Year' in 2013; and the last full ISI inspection

gave us top grades in every category – including 'exceptional' for teaching and learning.

Most importantly, Brighton is a happy school. Staff and pupils feel fulfilled, and our emphasis on kindness lends itself to a thriving intellectual, sporting and performing arts culture. Our location in the city gives us the best of all worlds: we're 5 minutes from the sea and the city centre, 10 minutes from the South Downs, and in the heart of the local Kemptown community. We hope that you will want to come and join the fantastic group of professionals who work here.



100+ CLUBS AND ACTIVITIES FOR PUPILS



96% 9-7 AT GCSE



200+ teaching staff



99% A*-B AT A-LEVEL



30 subjects offered



120 CHARITIES AND PROJECTS SUPPORTED



43,200 community service hours a year



10 SCHOOLS IN THE INTERNATIONAL BRIGHTON COLLEGE FAMILY



20 FREE SIXTH FORM SCHOLARSHIPS

THE SEA AIR

The beach is a huge part of Brightonian life – from dipping your toes in over the summer or being a regular BC sea swimmer no matter what the weather. With sea views from a number of our classrooms and our rooftop Sky Garden, being close to the sea is part of everyday life.



THE LANES AND THE NORTH LAINE

The city centre is a delight of twisting lanes filled with new discoveries waiting on every visit. From boutiques to vintage emporiums the historic 'Lanes' area has everything. Big believers in supporting local, the North Laine area has a huge range of independent shops. Between these two spots you can find anything you need.



FOOD, GLORIOUS FOOD

While Brighton is still yet to sparkle with its first Michelin star, the list of restaurants with Michelin mentions is long. If fine dining isn't your cup of tea then the enormous range of down-to-earth establishments won't disappoint: café culture is prominent in the city; family-friendly choices can be found in each suburb; and vegan/vegetarian cuisine is booming.



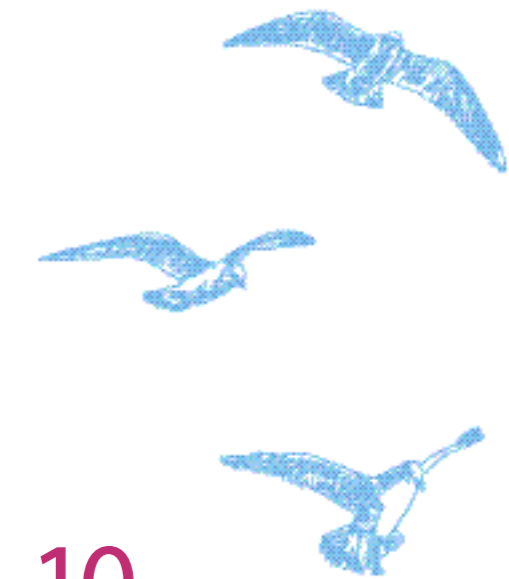
FESTIVALS AND CULTURE

Brighton is home to a variety of cultural events and celebrations throughout the year. This includes the largest and most established annual multi-arts festival in England, Brighton Festival. Then there's the Fringe Festival; the Theatre Royal; a thriving arts scene; music venues; a nationally renowned comedy club; and the oldest cinema in Britain.



NO NEED TO DRIVE

Like London, Brighton favours the pedestrian. With the UK's only Green MP representing us, the city is set up for pedestrians, cyclists and those more adventurous forms of transport. The seafront cycle lanes are frequented by adults and children, and there are some wonderful routes that take you around the different parts of the city and surrounding countryside.

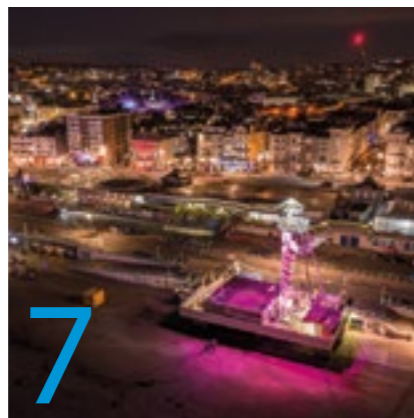


10 reasons to live in Brighton



THE COUNTRYSIDE AND PARKS

Not only do we have the beach, we also have the countryside. Surrounded by the glorious South Downs (a nationally recognised area of outstanding natural beauty) the city has no shortage of green spaces for individuals and families. A 15 minute bus ride from the city centre will get you to Devil's Dyke nature reserve or Stanmer Park; and a short train ride will take you to neighbouring Seaford to walk along the iconic Seven Sisters.



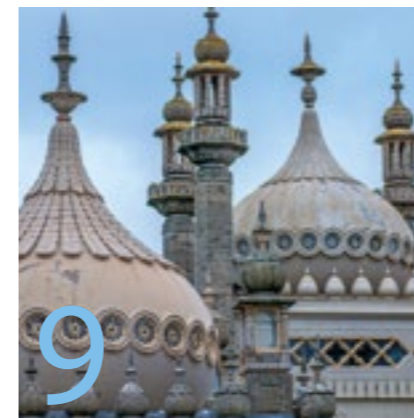
VIBRANT SOCIAL LIFE

Whether you're looking for a fun family night out at glow-in-the-dark minigolf, or a more grown up catch up with friends at an independent speakeasy you will never be short on choices in Brighton. The city has more pubs per square mile than London; there are jazz cafés and wine-tasting bars; fusion tapas pop-ups and street-food markets.



DIVERSITY

As the unofficial LGBT capital of the UK, Brighton has a proud history of embracing diversity. The annual Pride weekend in August is a city-wide celebration, involving a host of events that includes a parade through the city centre. The city takes its commitment to kindness and acceptance seriously all year round, and was also voted one of the top three friendliest cities in the UK.



HISTORY

What started as an ancient fishing village is now the largest city in South East England. Archaeological evidence shows that mammoths used to roam along the shores; an important Iron Age fort sits to the north of the city; a Roman villa existed in the city centre; the Domesday Book references the number of herrings paid by the settlement; and the Prince Regent established the city as a recreational base in the 18th century.



SMALL CITY WITH BIG CONNECTIONS

With just over 290,000 residents the city is England's most populous seaside resort town in the UK. There's always plenty to do, but with the perks of 'small town living'. You can reach any part of the city within 30 minutes by bus or cycle. But if you are looking for bigger adventures, it's just a 30 minute train ride to Gatwick airport, and a 50 minute train ride to London Victoria station.

Voted **'The happiest city in the UK'**, 'the sunniest city in the UK' and 'the most dog friendly city in the UK', there are plenty of reasons to choose 'London by the sea' as your home. Here are 10 reasons our staff love Brighton.



About the role

Brighton College is seeking to appoint a Housemaster/mistress of one of our boys' day houses. The start date for this role is August 2024

BRIGHTON'S PASTORAL SYSTEM

Pastoral care at Brighton is structured through 14 vertically organised houses, each with pupils from Years 9 to 13 inclusive (there is a separate house for the youngest pupils in Years 7 and 8.)

There are eight boys' houses (split between five day houses and three boarding houses), five girls' houses (split between three day houses and two boarding houses), and one co-educational sixth form boarding house.

Housemasters/mistresses (HMMs) take responsibility for the pastoral care and development of all the pupils in their house, supported by a team of tutors who work very closely with the HMM.

House spirit in the school is alive and well. Pupils are fiercely loyal to their house, and engage enthusiastically with house events and interhouse competitions. Each house, boarding and day, has its own dedicated physical space on the campus, in which pupils are registered twice each day.

This space combines social and work areas.



In this way, HMMs find it easy to get to know their pupils exceptionally well. When pupils leave at the end of the Upper Sixth, it is often the HMM that they identify as having had the most significant impact on them during their time in the school.

There are eight Day houses at Brighton College with between 80 and 105 pupils in each house; the HMM is supported by a Deputy HMM and a team of eight to ten tutors; together they are responsible for the pastoral wellbeing and academic progress of each pupil.

Whilst all houses share common values and systems of support, they each have their own character and identity, shaped in a large part by the HMM.

ROLE SPECIFICATION

The HMM is responsible for: maintaining the overview of all the pupils in the house and is responsible for the tone and ethos of the House ensuring that the pastoral needs of each pupil are met. He or she will also take specific interest in key areas of the pupils' progress, such as GCSE choices and university admissions, and will also be involved in helping the pupils through any disciplinary issues.

The HMM must ensure that every pupil develops his/her social and academic potential to the fullest extent.

HMMs are supported in their work by being part of a vibrant community of peers who meet regularly to discuss themes and best practice in pastoral care. Reporting to the Deputy Head (Pupils), they also work closely with the safeguarding and wellbeing teams in order to provide optimal care for children with more complex needs.

SAFEGUARDING RESPONSIBILITIES:

- This role will involve daily contact with pupils and you will be engaging in regulated activity relevant to children.
- All staff and volunteers have a responsibility for promoting and safeguarding the welfare of children and young persons for who you are responsible and with whom you come into contact.



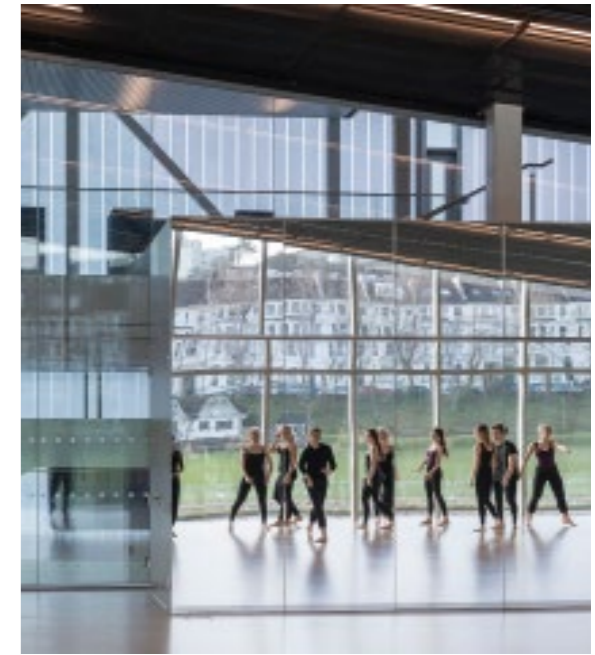
PERSON SPECIFICATION

The ideal candidate will have demonstrated commitment to the provision of outstanding pastoral care through their career to date, and will want to build on Brighton's reputation for excellence in this area. Candidates should be excited by the potential that this role offers to have a deep and lasting development of a community of young people, and their nurturing through the formative adolescent years.

Although HMMs are important pastoral positions, the successful candidate will also be a highly effective classroom practitioner who can also use their academic background to inspire scholarship amongst the pupils in their House. We are therefore looking for individuals who foster a passion for learning and who demonstrate an ability and genuine desire to develop pupils and staff to their fullest potential. Candidates should have a strong academic record, including a good degree in a relevant subject, and demonstrate passion for their discipline. A willingness to support the ambition and values of the school and to be involved in a breadth of College life will also be key.

More broadly, successful candidates will be self-reliant and adaptable, with high levels of initiative and flexibility. They should have strong inter-personal skills and be able to build rapport easily with pupils, parents and colleagues alike. We will also look for evidence of their enthusiasm for the role and capacity for hard work.

Previous HMMs have gone on to hold senior management positions at the College or to work in our family of schools, many of which are overseas, but we are interested in hearing from candidates who wish to make a positive difference to a House community over a sustained period of time.



The application process

Candidates should submit an online application by **9.00am on 4 March 2024**, through our application portal. Applications will be considered on a rolling basis and early application is therefore encouraged.

Any enquiries about the application procedure should be emailed to recruitment@brightoncollege.net.

Candidates invited to interview may be asked to teach an observed lesson as part of the process. Further information on the observed lesson will be provided in advance of interview.

Remuneration

Brighton College has its own pay scale, above the maintained sector. There is also an excellent and flexible benefits package, the contents of which can be controlled by individual teachers themselves. Generous fee remission is also available for dependent children in either the Prep School or College, subject to a place being offered. All of our teachers are enrolled into the Teachers' Pension Scheme.

Safeguarding and equal opportunities

Brighton College is committed to safeguarding and promoting the welfare of children and young people and expects all staff and volunteers to share this commitment. Any offer of employment will be subject to successfully completing pre-employment checks, including an enhanced DBS disclosure, the receipt of satisfactory references, the College's pre-employment medical questionnaire, relevant original ID documentation and examination certificates.

The College is committed to ensuring that the recruitment and selection of staff is conducted in a manner that is systematic, efficient and effective and promotes equality of opportunity. Our full equal opportunities policy is available on the 'Careers' page of our website.