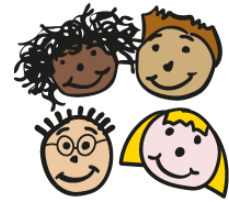


Bowes Primary School

Class Teacher

<https://mynewterm.com/jobs/143201/EDV-2026-BPS-72259>

BOWES
PRIMARY SCHOOL



Apply by: Friday 15th May 2026
Interviews: W/C 18th May 2026
Salary Range: MPS (Outer London)
Working hours: Full Time
Contract Term: Fixed Term – 1 Year
Job Start: 2nd September 2026

We encourage applications from people from all backgrounds and aim to have a workforce that represents the wider society that we serve. We pride ourselves on being an employer of choice. We champion diversity, inclusion and well-being and aim to create a workplace where everyone feels valued and a sense of belonging.

Bowes Primary School is seeking an enthusiastic and inspirational Class Teacher to join our dynamic team. Our school is committed to achieving the best outcomes for all children and fostering an innovative teaching environment. We have adopted a 'no marking' feedback policy, enabling teachers to provide meaningful, immediate feedback while maintaining a healthy work-life balance.

We value the integration of modern technology into education. With a robust supply of Chromebooks, our classrooms empower children to explore a creative and engaging curriculum.

Our ethos is rooted in a commitment to nurturing a 'growing heart and mind' for every child. Through our creative curriculum, we inspire learning that amplifies pupil voice and promotes core values – resilience, respect, and independence. By encouraging a growth mindset, we equip children with the skills they need for lifelong learning and success.

We are part of the Connect Education Trust, a partnership of successful schools in North London. We firmly believe that we are better together and the collective experience of our people and our individual communities allows us to achieve far more than we ever could alone. Connect schools offer exceptional education to our pupils.

We are constantly reviewing our practices to ensure that our staff can focus on what matters, providing a rich environment in which children can learn and thrive. We are able to offer significant opportunities to work in collaboration with colleagues at Bowes Primary School and across the Trust. The staff at Bowes are able to be involved with developments within the curriculum in areas that interest them.

The wellbeing of our staff is of paramount importance and we promote a healthy work-life balance. As part of the Trust, we provide all staff with wellbeing days, an attendance reward scheme and a cycle to work scheme, as well as giving all employees access to a support hub.

With easy access into central London, our school is ideal for candidates wanting to live in either inner or outer London. In line with recent legislation, applicants must have a command of spoken English that is sufficient to effectively carry out duties of the role.

Please visit our website to learn more about Bowes: <http://www.bowesprimaryschool.org>. Visits are warmly welcome, please contact Effie Demetriou, the Headteacher on 0208 368 2552 to arrange this or for any further information.

All Connect Education Trust is committed to safeguarding, therefore all employees working within the Trust must have the ability to work in a way that promotes the safety and wellbeing of our children and young people. All candidates are required to complete the school's 'Keeping Children Safe in Education' declaration and will be asked to apply for an Enhanced Check from the Disclosure and Barring Service (DBS). For posts in regulated activity, this will include a barred list check. The Trust also requires consent from applicants to carry out online searches of publicly available information, including social media, prior to interview.



CONNECT
EDUCATION TRUST