



# SHREWSBURY INTERNATIONAL SCHOOL

BANGKOK • RIVERSIDE

Shrewsbury International School Bangkok, Riverside

## Job Opportunity

Position / Job Specification: Head of Junior Physical Education and Sport (start January 2022 if possible)

Posting Date: 2 November 2021

Closing Date: Interested candidates are suggested to apply immediately.  
(Applications will be considered as they arrive.)

Department: Physical Education

Salary: Shrewsbury International School QTS salary scale applies.

Benefits: An excellent international package of benefits including:

- Two-year contracts;
- Excellent accommodation in Central Bangkok for singles and couples is available subject to availability at The Chatrium, adjacent to the school ([www.chatrium.com](http://www.chatrium.com)) or for singles, couples and families at Bangkok Garden, only minutes from the school ([www.bangkokgarden.com](http://www.bangkokgarden.com)). The accommodation is provided free of charge, although a small tax deduction is made at source.
- Flights at the beginning and end of each contract;
- Relocation allowance at the beginning and end of employment;
- Medical insurance with Cigna (Thailand);
- Generous support for personal professional development.

Position	Head of Junior Physical Education and Sport will work closely
Summary:	<p>alongside the Head of Physical Education and Director of Sport to lead and promote teaching and learning in Physical Education and participation in competitive sport across the Junior school. The Physical Education department of highly motivated and experienced staff teaches throughout the School (Years 3-13) with 2 specialist Early Years practitioners and expectations are high. The department enjoys excellent results at GCSE and A Level. Candidates should be willing to bring innovation, passion and a love of Physical Activity and Sport to an already inspired department. The candidate's work ethic must be exemplary. The candidate should also have a willingness to be a reflective practitioner who could further enhance teaching and learning in the school. The department runs regular teaching and learning focused department meetings where all members of the department contribute; the candidate would be expected to contribute and lead these meetings when appropriate. The department also leads in the extensive extracurricular sporting programme to cater for the large number of pupils who represent the school in both local and international sporting tournaments.</p>
General:	<p>Shrewsbury is one of South East Asia's outstanding international schools, with enrolment of over 1850 students from Early Years to Sixth Form, exceptional examination results and particular strengths in the creative arts, design and sport. The school is near completing an ambitious building project of world-class resources which will allow numbers in the Senior school to continue to grow. The school itself enjoys a delightful and spectacular setting, right on the banks of the Chao Phraya River in the heart of Bangkok. The teaching environments are spacious, fully equipped and dramatic. The school is readily accessed by road and has its own boats, which provide an easy and quick link to Bangkok's Skytrain and the city centre. The link with Shrewsbury School UK (<a href="http://www.shrewsbury.org.uk">www.shrewsbury.org.uk</a>) is taken very seriously and, year-on-year, develops into a world-class educational partnership.</p>
Candidate	The successful candidate:
Profile:	<ul style="list-style-type: none"> <li>• be an accomplished sports person in his or her own right, and will possess outstanding teaching &amp; coaching skills;</li> </ul>

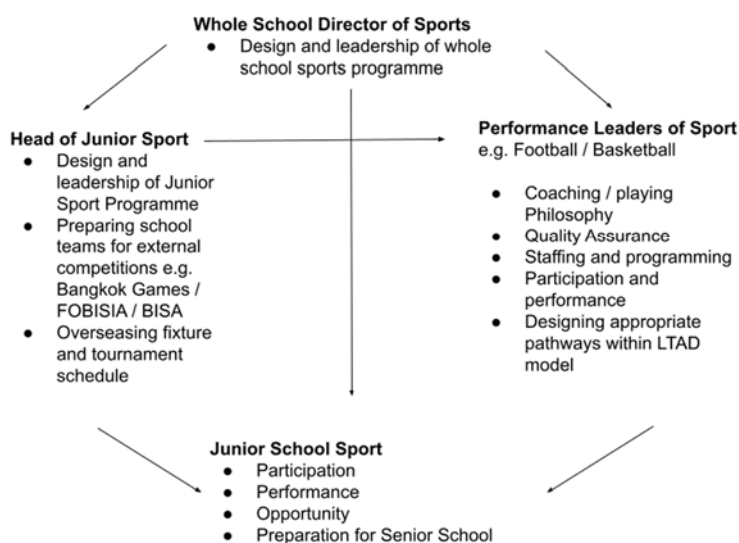
- be passionate about the development of young people and fostering a love of physical education and sport in all members of the Junior School community;
- be able to nurture and stretch the most able whilst also making physical education and sport accessible and enjoyable for all in Junior School;
- be an exemplar teacher in respect of planning, preparation of the learning environment, lesson delivery (including EAL strategies and differentiation), assessment, marking and reporting;
- have excellent communication skills with all constituencies within the school;
- enjoy working as part of a large, talented and experienced team of PE teachers and sports coaches;
- manage their own time effectively- particularly in relation to balancing the demands made by teaching, subject management and involvement in school development.
- teaching in the UK and/or with the English National Curriculum will be an advantage.

Key  
Responsibilities  
and Tasks:

The candidate will be:

- responsible for design and implementation of the Physical Education Curriculum (Junior School) under the leadership of the Head of Physical Education
- will work closely with the Vice Principal (Junior), Head of Physical Education and Junior School Year Team Leaders in creating safe, challenging and age-appropriate schemes of work for Keys Stages 1 and 2;
- responsible for the development of a planned, sequential and integrated approach to the delivery of Physical Education that is well-aligned with the academic and extra-curricular programmes offered by the school;

- will work closely with the Head of Physical Education who is responsible for the staffing and timetable design for Junior Physical Education
- responsible for the setting of ambitious targets for all students taught in line with school wide goals and which take account of students' prior attainment and English Language levels;
- responsible for overseeing good discipline and safe practice in all Junior School Physical Education lessons taught (including swimming) by following the Physical Education department's policies and The School's Health and Safety and disciplinary policies and procedures;
- expected to teach a combination of Physical Education and Swimming lessons across the Junior school (the opportunity to teach across the whole school age range may be available dependent on experience and skill set);
- will attend Junior Specialist Meetings
- will work closely with the Vice Principal (Junior) and Director of Sport to deliver participative sporting pathways that provide long term competitive opportunities
- will deliver team and individual competitive opportunities within the framework devised by Director of Sport



- will continue to innovate and develop Shrewsbury's sporting offer
- take a full and active role in the schools extensive sporting and physical activity programme, with an emphasis on junior sport;
- Liaise constructively (and proactively) with the parental community to communicate the vision and goals of the department and junior school along with other issues or developments within the department.

Child Safeguarding: Shrewsbury International School is committed to Safeguarding and Child Protection promoting the welfare of children. The successful candidate will be required to

- attend in-house Child Safeguarding programmes
- promote and safeguard the welfare of all students in the school
- report to the Child Protection Officer any concerns they have for the welfare of a student. This may include unsafe practices witnessed within the school as outlined in the school's Speak Out (Whistleblowing) Policy.
- keep professional relationships with students where personal boundaries are respected and maintained
- seek advice from a Line Manager or Child Protection Officer with issues or concerns related to Child Safeguarding.

Requirements:

- International Child Protection Certificate (ICPC) and all criminal record check(s) according to residence history prior to the start of contract.
- Formal proof of identity with photo ID (Original Driving License / Passport).
- 2 signed, confidential references (one of which will be from the candidate's current headteacher) before the start of contract.
- Verification of original qualifications.

How to Apply: Applications will be accepted via TES Portal.

Further Details: Full details of the school are available on our website at [www.shrewsbury.ac.th](http://www.shrewsbury.ac.th).

Any queries should be forwarded to

- Philip Stewart – Vice Principal – Head of Junior  
([Philip.s@shrewsbury.ac.th](mailto:Philip.s@shrewsbury.ac.th)).
- Ian Radcliffe – Head of Physical Education  
([Ian.R@shrewsbury.ac.th](mailto:Ian.R@shrewsbury.ac.th)).
- Paul Rotheram – Director of Sport  
([Paul.R@shrewsbury.ac.th](mailto:Paul.R@shrewsbury.ac.th)).